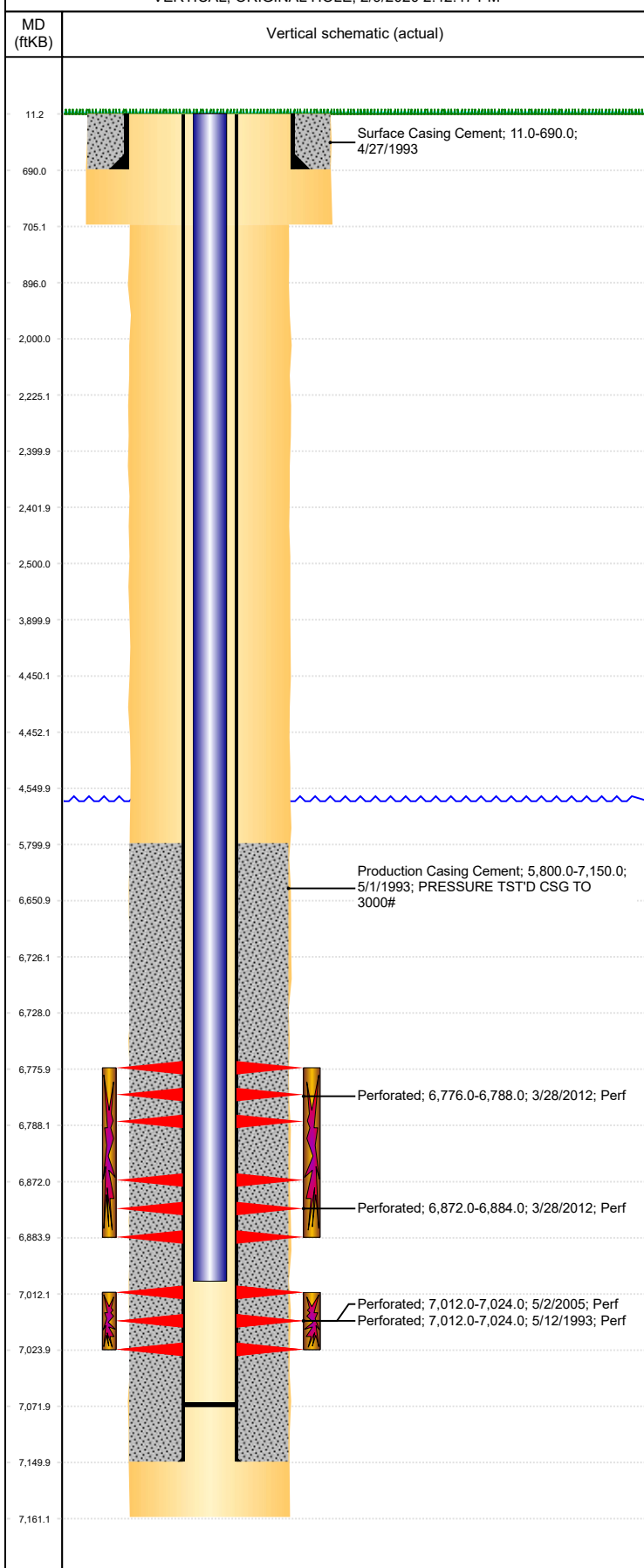


Well Name: CYDNEY WHITE D33-07

VERTICAL, ORIGINAL HOLE, 2/9/2020 2:42:47 PM



| Well Header | | | | | | | | | |
|----------------------------------|-------------|---------------------------|--------------------|-------------------------------|----------------|------------------------------|------------------------------------|---------------------------------------|--|
| API 05-123-16850 | | Business Unit DJ BASIN | | | District 15 | | Well Config VERTICAL | | |
| KB - GL / MSL (ft... 11.00 | | Spud Date 4/26/1993 | | P & A Date | | Well Production Status PR | | SoRT No | |
| Comment | | | | | | | | | |
| Surface Location (Congressional) | | | | | | | | | |
| Qtr 3 SE | Qtr 4 NE | Section 33 | Twonshp 3 | Twonsh... N | Range 64 | Rng E... W | Actual Latitude (°) 40.18379112 | Actual Longitude (°) -104.55437415 | |
| Wellbore Sections | | | | | | | | | |
| Section Des | | | Size (in) | | | Act Top, MD (ftKB) | | Act Btm, MD (ftKB) | |
| SURFACE | | | 12 1/4 | | | 11 | | 705 | |
| PRODUCTION | | | 7 7/8 | | | 705 | | 7,161 | |
| Casing Strings | | | | | | | | | |
| Csg Des | | | Run Date | OD (in) | Wt/Len (lb/ft) | Grade | Top, MD (ftKB) | MD (ftKB) | |
| Surface Casing | | | 4/27/1993 | 8 5/8 | 24.00 | | 11.0 | 690.0 | |
| Production | | | 5/1/1993 | 2 7/8 | 6.50 | N-80 | 11.0 | 7,150.0 | |
| Cement | | | | | | | | | |
| Des | | | | Start Date | | Top (ftKB) | | Btm (ftKB) | |
| Surface Casing Cement | | | | 4/27/1993 | | 11.0 | | 690.0 | |
| Production Casing Cement | | | | 5/1/1993 | | 5,800.0 | | 7,150.0 | |
| Zone Statuses | | | | | | | | | |
| Zone Name | Status Date | Status | Fluid Type | Job | | | | Prod Method | |
| CODELL | 3/27/2012 | SI | | RECOMPLETION, 3/26/2012 06:00 | | | | | |
| CODELL | 4/11/2012 | PR | | RECOMPLETION, 3/26/2012 06:00 | | | | | |
| NIOBRARA | 4/3/2012 | PR | | RECOMPLETION, 3/26/2012 06:00 | | | | | |
| NIOBRARA | 4/11/2012 | PR | | RECOMPLETION, 3/26/2012 06:00 | | | | | |
| Perforation Data | | | | | | | | | |
| Linked Zone | | Bnch/Stg | Entered Shot Total | Top (ftKB) | | Btm (ftKB) | | Date | |
| NIOBRARA, ORIGINAL HOLE | | A | 48 | 6,776.00 | | 6,788.00 | | 3/28/2012 | |
| NIOBRARA, ORIGINAL HOLE | | B | 48 | 6,872.00 | | 6,884.00 | | 3/28/2012 | |
| CODELL, ORIGINAL HOLE | | | 36 | 7,012.00 | | 7,024.00 | | 5/2/2005 | |
| CODELL, ORIGINAL HOLE | | | 49 | 7,012.00 | | 7,024.00 | | 5/12/1993 | |
| Stimulation Intervals | | | | | | | | | |
| Zone | | | Start Date | | | Top (ftKB) | | Btm (ftKB) | |
| NIOBRARA, ORIGINAL HOLE | | | 3/31/2012 | | | 6,776.0 | | 6,884.0 | |
| CODELL, ORIGINAL HOLE | | | 5/13/1993 | | | 7,012.0 | | 7,024.0 | |
| CODELL, ORIGINAL HOLE | | | 5/10/2005 | | | 7,012.0 | | 7,024.0 | |
| Other In Hole | | | | | | | | | |
| Run Date | | Des | | | | OD (in) | Top (ftKB) | Btm (ftKB) | |
| 9/25/2018 | | Plunger Lift | | | | 1.27 | | | |
| Logs | | | | | | | | | |
| Date | | Type | | | | Top, MD (ftKB) | | Btm, MD (ftKB) | |
| 5/12/1993 | | CBL/CCL/GR | | | | 5,650.0 | | 7,084.0 | |
| 5/12/1993 | | COMPENSATED DENSITY | | | | 6,300.0 | | 7,135.0 | |
| 5/12/1993 | | DUAL INDUCTION | | | | 3,900.0 | | 4,500.0 | |
| 10/27/2017 | | GYRO | | | | 3,900.0 | | 6,900.0 | |
| Plug Back Total Depths | | | | | | | | | |
| Date | | Type | | Com | | | | Depth (ftKB) | |
| 4/11/2012 | | FILL | | CLEAN OUT | | | | 7,072.0 | |
| 11/14/2014 | | FILL | | TAG @ 7006, C/O TO 7072' | | | | 7,072.0 | |