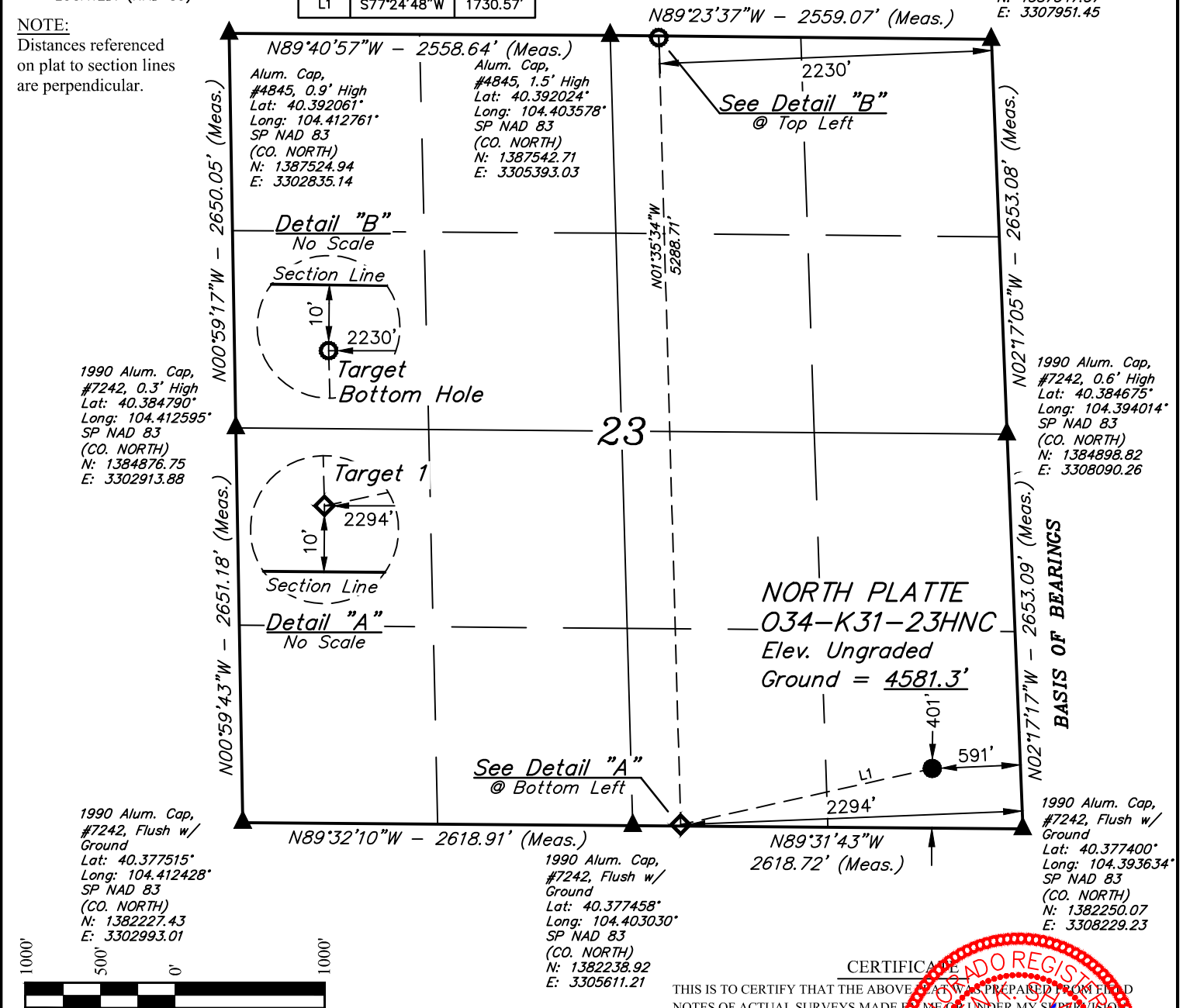


T5N, R63W, 6th P.M.

- Alum. Cap,
#4845, 0.9' High
Lat: 40.391950°
Long: 104.394394°
SP NAD 83
(CO. NORTH)
N: 1387547.57
E: 3307951.45

Distances referenced
on plat to section lines
are perpendicular.

LINE TABLE		
LINE	DIRECTION	LENGTH
L1	S77°24'48"W	1730.57'



NAD 83 (SURFACE LOCATION)		PDOP = 1.1
LATITUDE = 40°22'42.65" (40.378514)		
LONGITUDE = 104°23'44.94" (104.395815)		
STATE PLANE NAD 83 (CO. NORTH)		
N: 1382648.36 E: 3307616.35		
NAD 83 (TARGET 1)	NAD 83 (TARGET BOTTOM HOLE)	
LATITUDE = 40°22'38.92" (40.377479)	LATITUDE = 40°23'31.15" (40.391987)	
LONGITUDE = 104°24'06.75" (104.401876)	LONGITUDE = 104°24'08.66" (104.402406)	
STATE PLANE NAD 83 (CO. NORTH)	STATE PLANE NAD 83 (CO. NORTH)	
N: 1382250.29 E: 3305932.65	N: 1387533.33 E: 3305719.70	

CERTIFICATE

THIS IS TO CERTIFY THAT THE ABOVE MAP WAS PREPARED FROM FIELD NOTES OF ACTUAL SURVEYS MADE BY ME OR UNDER MY SUPERVISION, AND THAT THE SAME ARE TRUE AND CORRECT TO THE BEST OF MY KNOWLEDGE AND BELIEF.

CERTIFICATE OF REGISTRATION

THE ABOVE MAP WAS PREPARED FROM FIELD SURVEYS MADE BY ME OR UNDER MY SUPERVISION AND IS TRUE AND CORRECT TO THE BEST OF MY KNOWLEDGE.

[Signature]

REGISTERED LAND SURVEYOR
REGISTRATION NO. 22825
STATE OF OHIO

6/15/20

REV: 2 01-17-20 C.IVIE (NAME & LATERAL CHANGE)

USGS COOPERATIVE BASE NETWORK CONTROL STATION, DESIGNATION "M414". NGS DATA SHEET LISTS THE NAVD 88 ELEVATION AS BEING 4600.58 FEET.



UELS, LLC
Corporate Office * 85 South 200 East
Vernal, UT 84078 * (435) 789-1017



**BONANZA CREEK ENERGY
OPERATING COMPANY, LLC**

NORTH PLATTE O34-K31-23HNC
SE 1/4 SE 1/4, SECTION 23, T5N, R63W, 6th P.M.
WELD COUNTY, COLORADO

SURVEYED BY	CHAD MEIERS	01-03-19	SCALE
DRAWN BY	C.C.	09-22-16	1" = 1000'

WELL LOCATION PLAT