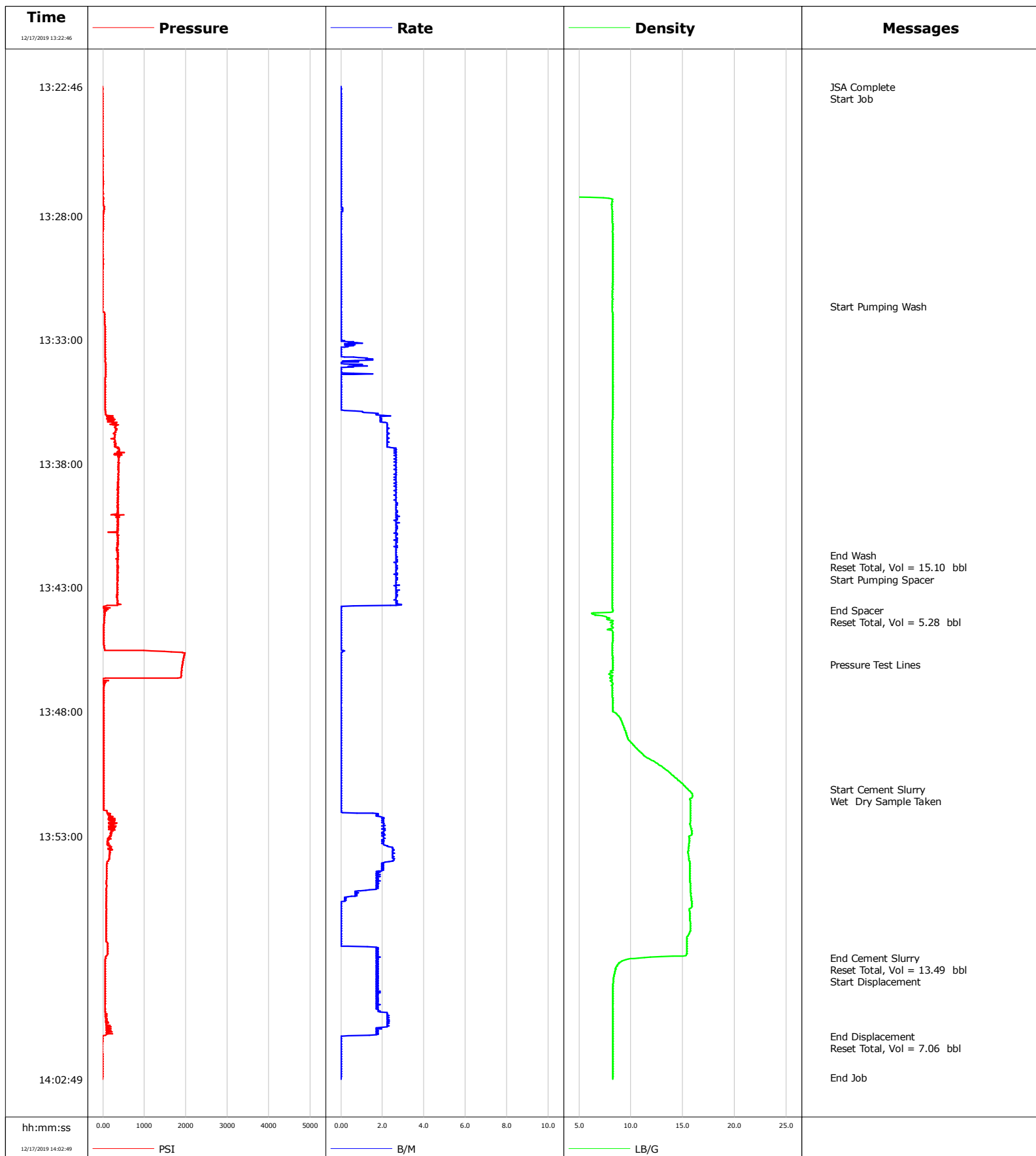


**Well** Schara 1-17  
**Field** DJ  
**Engineer**  
**Country** United States

**Client** Anadarko  
**SIR No.** EGTX-00289  
**Job Type** Pierre  
**Job Date** 12-17-2019



				Customer Anadarko		Job Number EGTX-00289	
Well Schara 1-17		Location (legal) 237104		Schlumberger Location		Job Start Dec/17/2019	
Field DJ		Formation Name/Type		Deviation deg	Bit Size in	Well MD 2000.0 ft	Well TVD 2000.0 ft
County Weld		State/Province Colorado		BHP psi	BHST 80 degF	BHCT 80 degF	Pore Press. Gradient lb/gal
Well Master 630582073		API/UWI 512322142					
Rig Name	Drilled For Oil & Gas	Service Via Land	Casing/Liner				
			Depth, ft	Size, in	Weight, lb/ft	Grade	Thread
Offshore Zone	Well Class Old	Well Type Workover	1950.0	4.5	11.6	N/A	N/A
			0.0	0.0	0.0		
Drilling Fluid Type		Max. Density lb/gal	Plastic Viscosity cP	Tubing/Drill Pipe			
				T/D	Depth, ft	Size, in	Weight, lb/ft
					2000.0	2.4	4.7
					0.0	0.0	0.0
Service Line Cementing		Job Type Pierre		Perforations/Open Hole			
				Top, ft	Bottom, ft	shot/ft	No. of Shots
							Total Interval ft
							Diameter in
				Treat Down Tubing	Displacement 7.0 bbl	Packer Type	Packer Depth ft
				Tubing Vol. 7.7 bbl	Casing Vol. bbl	Annular Vol. bbl	Openhole Vol. bbl
Casing/Tubing Secured <input checked="" type="checkbox"/>		1 Hole Vol. Circulated prior to Cement <input checked="" type="checkbox"/>		Casing Tools		Squeeze Job	
Lift Pressure psi				Shoe Type		Squeeze Type	
Pipe Rotated <input type="checkbox"/>		Pipe Reciprocated <input type="checkbox"/>		Shoe Depth ft		Tool Type	
No. Centralizers		Top Plugs	Bottom Plugs	Stage Tool Type		Tool Depth ft	
Cement Head Type				Stage Tool Depth ft		Tail Pipe Size in	
Job Scheduled For Dec/17/2019		Arrived on Location Dec/17/2019	Leave Location Dec/17/2019	Collar Type		Tail Pipe Depth ft	
				Collar Depth ft		Sqz. Total Vol. bbl	
Date	Time 24-hr clock	Treating Pressure PSI	Flow Rate B/M	Density LB/G	Volume BBL	Message	
12/17/2019	13:22:46	-5	0.0	0.33	0.0	Started Acquisition	
12/17/2019	13:22:47	-5	0.0	0.33	0.0	Start Job	
12/17/2019	13:23:16	-5	0.0	0.33	0.0		
12/17/2019	13:23:46	-5	0.0	0.33	0.0		
12/17/2019	13:24:16	-5	0.0	0.33	0.0		
12/17/2019	13:24:46	-5	0.0	0.33	0.0		
12/17/2019	13:25:16	-5	0.0	0.33	0.0		
12/17/2019	13:25:46	-5	0.0	0.33	0.0		
12/17/2019	13:26:16	-5	0.0	0.33	0.0		
12/17/2019	13:26:46	0	0.0	0.33	0.0		
12/17/2019	13:27:16	14	0.0	7.38	0.0		
12/17/2019	13:27:46	27	0.1	8.21	0.0		
12/17/2019	13:28:16	0	0.0	8.23	0.0		
12/17/2019	13:28:46	-5	0.0	8.24	0.0		
12/17/2019	13:29:16	-5	0.0	8.24	0.0		
12/17/2019	13:29:46	-5	0.0	8.24	0.0		
12/17/2019	13:30:16	-5	0.0	8.24	0.0		
12/17/2019	13:30:46	-5	0.0	8.24	0.0		
12/17/2019	13:31:16	-5	0.0	8.23	0.0		
12/17/2019	13:31:39	-5	0.0	8.22	0.0	Start Pumping Wash	
12/17/2019	13:32:16	41	0.0	8.27	0.0		

Well			Field		Job Start	Customer		Job Number
Schara 1-17			DJ		Dec/17/2019	Anadarko		EGTX-00289
Date	Time 24-hr clock	Treating Pressure PSI	Flow Rate B/M	Density LB/G	Volume BBL	Message		
12/17/2019	13:33:16	55	0.3	8.26	0.1			
12/17/2019	13:33:46	64	1.5	8.27	0.2			
12/17/2019	13:34:16	64	0.0	8.25	0.4			
12/17/2019	13:34:46	60	0.0	8.24	0.5			
12/17/2019	13:35:16	60	0.0	8.25	0.5			
12/17/2019	13:35:46	60	0.0	8.24	0.5			
12/17/2019	13:36:16	252	1.9	8.23	1.2			
12/17/2019	13:36:46	252	2.3	8.23	2.3			
12/17/2019	13:37:16	302	2.2	8.23	3.4			
12/17/2019	13:37:46	375	2.7	8.23	4.7			
12/17/2019	13:38:16	371	2.7	8.23	6.0			
12/17/2019	13:38:46	371	2.7	8.23	7.3			
12/17/2019	13:39:16	357	2.6	8.23	8.6			
12/17/2019	13:39:46	375	2.7	8.23	9.9			
12/17/2019	13:40:16	352	2.7	8.23	11.3			
12/17/2019	13:40:46	362	2.7	8.23	12.6			
12/17/2019	13:41:42	366	2.7	8.23	15.1	End Wash		
12/17/2019	13:41:43	348	2.7	8.23	15.1	Reset Total, Vol = 15.10 bbl		
12/17/2019	13:41:44	371	2.7	8.23	15.1	Start Pumping Spacer		
12/17/2019	13:41:46	348	2.7	8.22	15.1			
12/17/2019	13:42:16	362	2.7	8.22	16.5			
12/17/2019	13:42:46	352	2.7	8.22	17.8			
12/17/2019	13:43:16	362	2.7	8.22	19.1			
12/17/2019	13:43:46	14	0.0	8.22	20.4			
12/17/2019	13:43:53	50	0.0	8.24	20.4	End Spacer		
12/17/2019	13:43:54	27	0.0	8.25	20.4	Reset Total, Vol = 5.28 bbl		
12/17/2019	13:44:16	27	0.0	7.70	20.4			
12/17/2019	13:44:46	23	0.0	8.24	20.4			
12/17/2019	13:45:16	23	0.0	8.23	20.4			
12/17/2019	13:45:46	1955	0.0	8.24	20.4			
12/17/2019	13:46:05	1918	0.0	8.25	20.4	Pressure Test Lines		
12/17/2019	13:46:16	1900	0.0	8.24	20.4			
12/17/2019	13:46:46	-5	0.0	8.05	20.4			
12/17/2019	13:47:16	18	0.0	8.22	20.4			
12/17/2019	13:47:46	18	0.0	8.24	20.4			
12/17/2019	13:48:16	18	0.0	9.00	20.4			
12/17/2019	13:48:46	18	0.0	9.46	20.4			
12/17/2019	13:49:16	18	0.0	10.07	20.4			
12/17/2019	13:49:46	18	0.0	11.28	20.4			
12/17/2019	13:50:16	18	0.0	13.15	20.4			
12/17/2019	13:50:46	23	0.0	14.57	20.4			
12/17/2019	13:51:08	23	0.0	15.50	20.4	Start Cement Slurry		
12/17/2019	13:51:16	18	0.0	15.84	20.4			
12/17/2019	13:51:46	18	0.0	15.75	20.4			
12/17/2019	13:52:16	192	2.1	15.74	20.7			
12/17/2019	13:52:46	298	2.1	15.84	21.7			
12/17/2019	13:53:16	105	2.1	15.63	22.8			
12/17/2019	13:53:46	169	2.5	15.54	23.9			
12/17/2019	13:54:16	87	2.0	15.67	25.1			
12/17/2019	13:54:46	87	1.8	15.70	26.0			
12/17/2019	13:55:16	87	0.8	15.76	26.8			
12/17/2019	13:55:46	82	0.0	15.88	27.0			
12/17/2019	13:56:16	82	0.0	15.69	27.0			
12/17/2019	13:56:46	82	0.0	15.75	27.0			

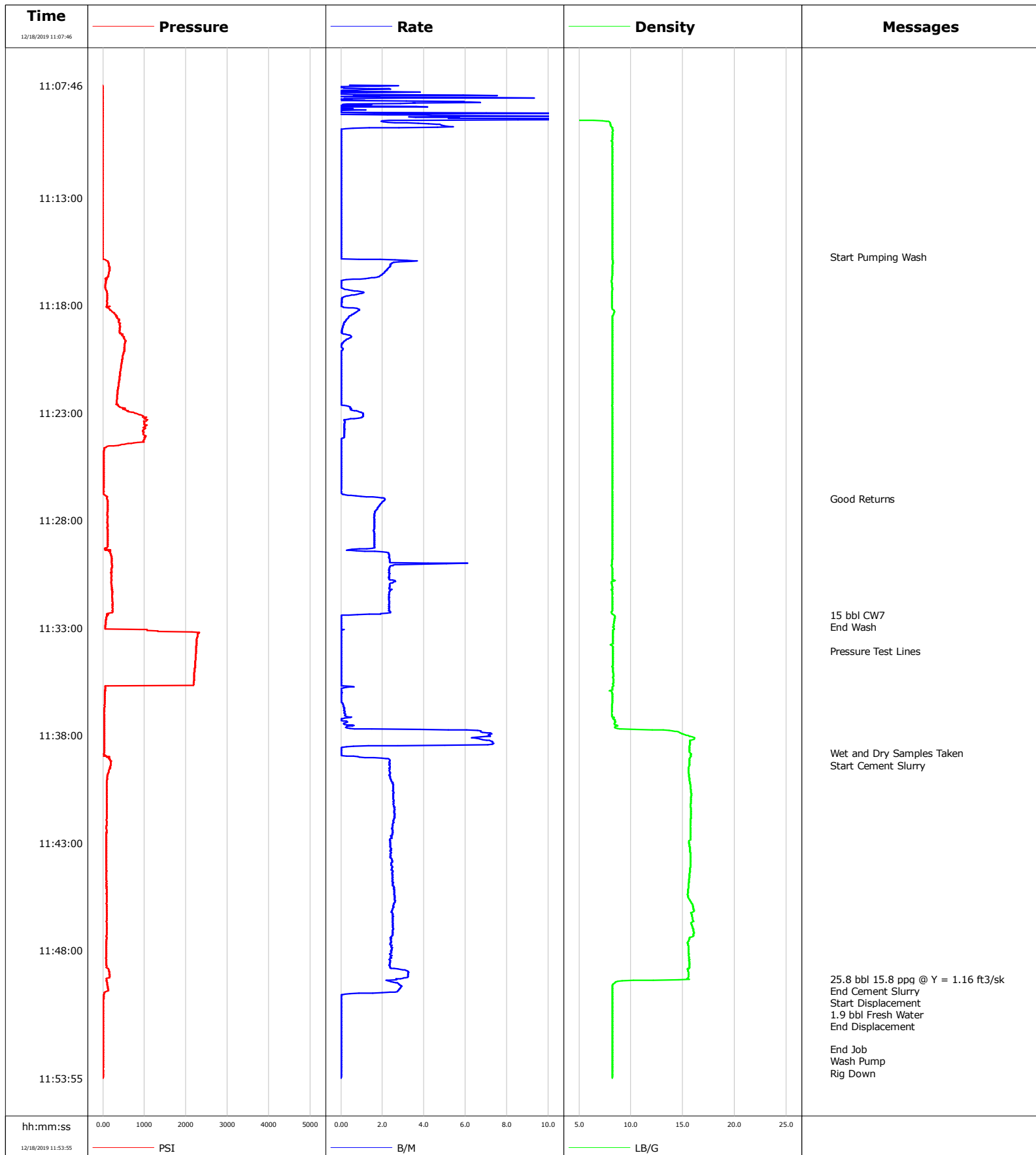
Well			Field		Job Start	Customer		Job Number
Schara 1-17			DJ		Dec/17/2019	Anadarko		EGTX-00289
Date	Time 24-hr clock	Treating Pressure PSI	Flow Rate B/M	Density LB/G	Volume BBL	Message		
12/17/2019	13:57:46	110	1.7	15.39	27.5			
12/17/2019	13:57:55	69	1.7	11.33	27.6	End Cement Slurry		
12/17/2019	13:57:56	64	1.7	10.74	27.7	Reset Total, Vol = 13.49 bbl		
12/17/2019	13:57:58	64	1.7	9.99	27.7	Start Displacement		
12/17/2019	13:58:16	55	1.7	8.63	28.2			
12/17/2019	13:58:46	55	1.7	8.31	29.1			
12/17/2019	13:59:16	55	1.7	8.26	30.0			
12/17/2019	13:59:46	55	1.7	8.27	30.9			
12/17/2019	14:00:16	105	2.2	8.25	31.8			
12/17/2019	14:00:46	165	1.7	8.25	32.9			
12/17/2019	14:01:05	-5	0.0	8.24	33.4	End Displacement		
12/17/2019	14:01:06	-9	0.0	8.24	33.4	Reset Total, Vol = 7.06 bbl		
12/17/2019	14:01:16	-9	0.0	8.27	33.4			
12/17/2019	14:01:46	-14	0.0	8.25	33.4			
12/17/2019	14:02:16	-5	0.0	8.25	33.4			

### Post Job Summary

Average Pump Rates, bbl/min					Volume of Fluid Injected, bbl					
Slurry 2.1	N2	Mud	Maximum Rate 2.9		Total Slurry 13.4	Mud 15.0	Spacer 5.0	N2		
Treating Pressure Summary, psi					Breakdown Fluid					
Maximum 1978	Final -5	Average 206	Bump Plug to	Breakdown	Type	Volume bbl	Density lb/gal			
Avg. N2 Percent %		Designed Slurry Volume 13.4 bbl	Displacement 7.0 bbl	Mix Water Temp 55 degF	Cement Circulated to Surface? <input type="checkbox"/>	Volume bbl				
					Washed Thru Perfs <input type="checkbox"/>	To ft				
Customer or Authorized Representative Fidel			Schlumberger Supervisor			Circulation Lost <input type="checkbox"/>	Job Completed <input checked="" type="checkbox"/>			
						-	-			

**Well** Schara 1-17  
**Field** DJ  
**Engineer** Ken Sovereign  
**Country** United States

**Client** Anadarko  
**SIR No.** EGTX-00290  
**Job Type** Stub Plug  
**Job Date** 12-18-2019



# Cementing Service Report

				Customer Anadarko		Job Number EGTX-00290	
Well Schara 1-17 1-17		Location (legal)		Schlumberger Location Cheyenne Remedial		Job Start Dec/18/2019	
Field DJ		Formation Name/Type		Deviation deg	Bit Size in	Well MD 915.0 ft	Well TVD 915.0 ft
County Weld		State/Province CO		BHP psi	BHST 80 degF	BHCT 80 degF	Pore Press. Gradient lb/gal
Well Master 65063131		API/UWI 512322142					
Rig Name Brigade 2	Drilled For Oil	Service Via Land	Casing/Liner				
			Depth, ft	Size, in	Weight, lb/ft	Grade	Thread
Offshore Zone	Well Class Old	Well Type Workover	814.0	8.6	24.0	J55	8RD
			0.0	0.0	0.0		
Drilling Fluid Type		Max. Density lb/gal	Plastic Viscosity cP	Tubing/Drill Pipe			
				T/D	Depth, ft	Size, in	Weight, lb/ft
Service Line Cementing	Job Type Stub Plug			T	915.0	2.4	4.7
					0.0	0.0	0.0
Max. Allowed Tub. Press psi	Max. Allowed Ann. Press psi	WH Connection 2 3/8" 4.7# T/S	Perforations/Open Hole				
			Top, ft	Bottom, ft	shot/ft	No. of Shots	Total Interval ft
			ft	ft			
			ft	ft			Diameter in
			ft	ft			
			Treat Down Tubing	Displacement 1.9 bbl	Packer Type	Packer Depth ft	
			Tubing Vol. 3.5 bbl	Casing Vol. bbl	Annular Vol. bbl	Openhole Vol. bbl	
Casing/Tubing Secured <input checked="" type="checkbox"/>		1 Hole Vol. Circulated prior to Cement <input checked="" type="checkbox"/>		Casing Tools		Squeeze Job	
Lift Pressure psi				Shoe Type		Squeeze Type	
Pipe Rotated <input type="checkbox"/>		Pipe Reciprocated <input type="checkbox"/>		Shoe Depth ft		Tool Type	
No. Centralizers		Top Plugs	Bottom Plugs	Stage Tool Type		Tool Depth ft	
Cement Head Type				Stage Tool Depth ft		Tail Pipe Size in	
Job Scheduled For Dec/18/2019		Arrived on Location Dec/18/2019	Leave Location Dec/18/2019	Collar Type		Tail Pipe Depth ft	
				Collar Depth ft		Sqz. Total Vol. bbl	
Date	Time 24-hr clock	Treating Pressure PSI	Flow Rate B/M	Density LB/G	Volume BBL	Message	
12/18/2019	11:07:46	-5	0.0	0.01	0.0	Started Acquisition	
12/18/2019	11:15:45	-5	0.0	8.22	6.1	Start Pumping Wash	
12/18/2019	11:17:46	96	0.1	8.18	8.4		
12/18/2019	11:22:46	481	0.4	8.22	9.0		
12/18/2019	11:27:00	105	2.1	8.22	9.8	Good Returns	
12/18/2019	11:27:46	110	1.6	8.23	11.2		
12/18/2019	11:32:23	133	0.8	8.31	20.8	15 bbl CW7	
12/18/2019	11:32:46	69	0.0	8.38	20.8		
12/18/2019	11:34:04	2243	0.0	8.27	20.8	Pressure Test Lines	
12/18/2019	11:37:46	27	6.6	13.67	20.9		
12/18/2019	11:38:49	27	0.0	15.75	20.9	Wet and Dry Samples Taken	
12/18/2019	11:42:46	78	2.4	15.75	30.2		
12/18/2019	11:47:46	78	2.4	15.53	42.5		
12/18/2019	11:49:19	82	2.7	15.41	46.6	25.8 bbl 15.8 ppg @ Y = 1.16 ft3/sk	
12/18/2019	11:49:59	27	0.9	8.21	48.3	1.9 bbl Fresh Water	
12/18/2019	11:52:34	0	0.0	8.22	48.4	End Job	
12/18/2019	11:52:35	0	0.0	8.22	48.4	Wash Pump	

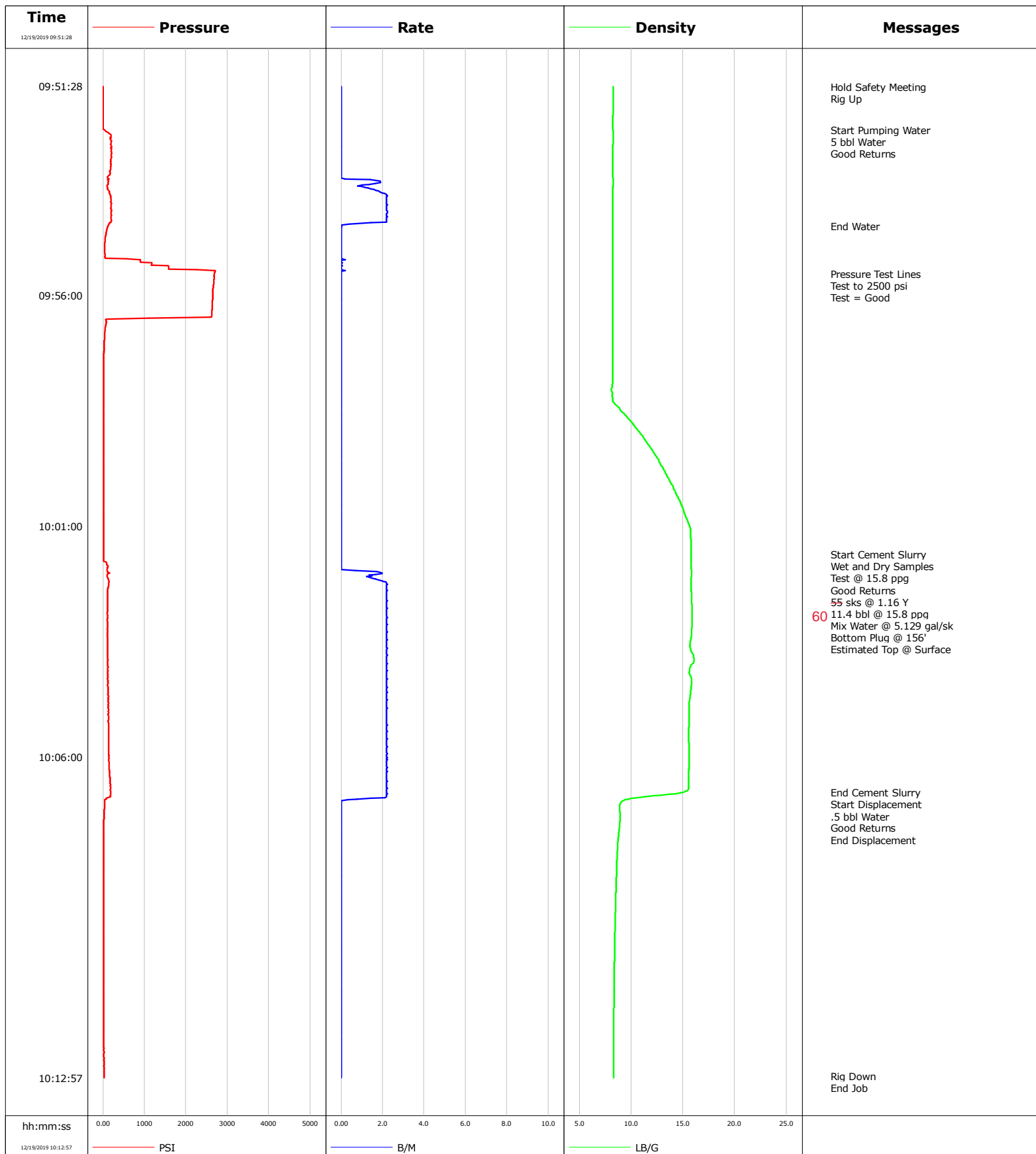
<b>Well</b> Schara 1-17 1-17	<b>Field</b> DJ	<b>Job Start</b> Dec/18/2019	<b>Customer</b> Anadarko	<b>Job Number</b> EGTX-00290
---------------------------------	--------------------	---------------------------------	-----------------------------	---------------------------------

Post Job Summary

Average Pump Rates, bbl/min					Volume of Fluid Injected, bbl					
Slurry 2.0	N2		Mud	Maximum Rate 2.5	Total Slurry 25.8	Mud 0.0		Spacer 15.0	N2	
Treating Pressure Summary, psi					Breakdown Fluid					
Maximum 2321	Final 0	Average 322	Bump Plug to	Breakdown	Type		Volume bbl		Density lb/gal	
Avg. N2 Percent %		Designed Slurry Volume 25.8 bbl		Displacement 1.9 bbl		Mix Water Temp 81 degF		Cement Circulated to Surface? <input type="checkbox"/>		Volume bbl
								Washed Thru Perfs <input type="checkbox"/>		To ft
Customer or Authorized Representative Fidel Gonzalez				Schlumberger Supervisor Ken Sovereign				Circulation Lost <input type="checkbox"/>		Job Completed <input checked="" type="checkbox"/>
								-		-

**Well** Schara 1-17  
**Field** DJ  
**Engineer** Matt Leiker  
**Country** United States

**Client** Anadarko  
**SIR No.** EGTX-00291  
**Job Type** Plug  
**Job Date** 12-19-2019





# Cementing Service Report

				Customer Anadarko			Job Number EGTX-00291						
Well Schara 1-17			Location (legal)			Schlumberger Location			Job Start Dec/19/2019				
Field DJ		Formation Name/Type			Deviation deg		Bit Size in		Well MD ft		Well TVD ft		
County Weld		State/Province Colorado			BHP psi		BHST degF		BHCT degF		Pore Press. Gradient lb/gal		
Well Master 0630582073		API/UWI 05123221420000											
Rig Name Brigade 2		Drilled For Oil		Service Via Land		Casing / Liner							
						Depth, ft		Size, in		Weight, lb/ft		Grade	
Offshore Zone		Well Class Old		Well Type Workover									
Drilling Fluid Type		Max. Density lb/gal		Plastic Viscosity cP		Tubing / Drill Pipe							
						T/D		Depth, ft		Size, in		Weight, lb/ft	
Service Line Cementing		Job Type Plug				T		156.0		2.4		4.7	
								0.0		0.0		J55	
												8RD	
Max. Allowed Tub. Press psi		Max. Allowed Ann. Press psi		WH Connection 2 3/8" 4.7# T/S		Perforations / Open Hole							
						Top, ft		Bottom, ft		shot/ft		No. of Shots	
						ft		ft				Total Interval ft	
						ft		ft				Diameter in	
						ft		ft					
						Treat Down Tubing		Displacement 0.5 bbl		Packer Type		Packer Depth ft	
						Tubing Vol. bbl		Casing Vol. bbl		Annular Vol. bbl		Openhole Vol. bbl	
Casing/Tubing Secured <input checked="" type="checkbox"/>		1 Hole Vol. Circulated prior to Cement <input checked="" type="checkbox"/>				Casing Tools				Squeeze Job			
Lift Pressure psi						Shoe Type				Squeeze Type			
Pipe Rotated <input type="checkbox"/>		Pipe Reciprocated <input type="checkbox"/>				Shoe Depth ft				Tool Type			
No. Centralizers		Top Plugs		Bottom Plugs		Stage Tool Type				Tool Depth ft			
Cement Head Type						Stage Tool Depth ft				Tail Pipe Size in			
Job Scheduled For Dec/19/2019		Arrived on Location Dec/19/2019		Leave Location Dec/19/2019		Collar Type				Tail Pipe Depth ft			
						Collar Depth ft				Sqz. Total Vol. bbl			
Date	Time 24-hr clock	Treating Pressure PSI	Flow Rate B/M	Density LB/G	Volume BBL	Message							
12/19/2019	09:51:28	9	0.0	8.28	0.0	Started Acquisition							
12/19/2019	09:51:29	9	0.0	8.28	0.0	Hold Safety Meeting							
12/19/2019	09:52:25	27	0.0	8.25	0.0	Start Pumping Water							
12/19/2019	09:52:26	50	0.0	8.26	0.0	5 bbl Water							
12/19/2019	09:54:30	128	0.0	8.25	1.9	End Water							
12/19/2019	09:55:32	2687	0.0	8.25	1.9	Pressure Test Lines							
12/19/2019	09:55:34	2682	0.0	8.25	1.9	Test to 2500 psi							
12/19/2019	10:01:37	18	0.0	15.78	1.9	Start Cement Slurry							
12/19/2019	10:01:38	18	0.0	15.78	1.9	Wet and Dry Samples							
12/19/2019	10:01:39	18	0.0	15.78	1.9	Test @ 15.8 ppg							
12/19/2019	10:01:40	18	0.0	15.78	1.9	Mix Water @ 5.129 gal/sk							
12/19/2019	10:06:46	183	2.2	15.06	12.4	End Cement Slurry							
12/19/2019	10:06:48	188	2.2	14.30	12.4	Start Displacement							
12/19/2019	10:06:49	183	2.2	13.65	12.5	.5 bbl Water							
12/19/2019	10:06:58	46	0.0	9.12	12.7	End Displacement							

<b>Well</b> Schara 1-17	<b>Field</b> DJ	<b>Job Start</b> Dec/19/2019	<b>Customer</b> Anadarko	<b>Job Number</b> EGTX-00291
----------------------------	--------------------	---------------------------------	-----------------------------	---------------------------------

Post Job Summary

Average Pump Rates, bbl/min					Volume of Fluid Injected, bbl			
Slurry 2.1	N2	Mud	Maximum Rate 2.2		Total Slurry 11.4	Mud 0.0	Spacer 5.0	N2
Treating Pressure Summary, psi					Breakdown Fluid			
Maximum 2715	Final 0	Average 206	Bump Plug to	Breakdown	Type	Volume bbl		Density lb/gal
Avg. N2 Percent %	Designed Slurry Volume 11.4 bbl	Displacement 0.5 bbl	Mix Water Temp 72 degF	Cement Circulated to Surface? <input checked="" type="checkbox"/>		Volume bbl		
				Washed Thru Perfs <input type="checkbox"/>		To ft		
Customer or Authorized Representative Fidel Gonzalez			Schlumberger Supervisor Matt Leiker			Circulation Lost <input type="checkbox"/>		Job Completed <input checked="" type="checkbox"/>
						-		-