

ADI

Wireline Services

Ft. Morgan, CO

CEMENT BOND LOG CCL GAMMA RAY VDL

Company	Smith Oil Properties & O'Brien Energy
Well	Lost Creek O'Brien 3-20
Field	Peacock
County	Weld
State	Colorado

Location	660' FNL & 1980 FWL	Other Services
	NE NW	NONE
	SEC 20 TWP 3N RGE 62W	

Permanent Datum	GL	Elevation
Log Measured From	KB	4658
Drilling Measured From	KBG	K.B. 4668 D.F. 4067 G.L. 4658

Company
Well
Field
County
State

Date 28 JAN. 2002

Run Number	1
Depth Driller	5930
Depth Logger	6907
Bottom Logged Interval	6904
Top Log Interval	5790
Open Hole Size	---
Type Fluid	WATER
Density / Viscosity	---
Max. Recorded Temp.	---
Estimated Cement Top	5906
Time Well Ready	0900
Time Logger on Bottom	0920
Equipment Number	201
Location	FTM
Recorded By	GRIMES
Witnessed By	MR. SMITH

Borehole Record			Tubing Record				
Run Number	Bit	From	To	Size	Weight	From	To

Casing Record		Size	Wgt/Ft	Top	Bottom
Surface String		9 5/8"	24#	SURF	562
Prot. String					
Production String		4 5/8"	11.60	SURF	6930
Liner					

All interpretations are opinions based on inferences from electrical or other measurements and we cannot and do not guarantee the accuracy or correctness of any interpretation, and we shall not, except in the case of gross or willful negligence on our part, be liable or responsible for any loss, costs, damages, or expenses incurred or sustained by anyone resulting from any interpretation made by any of our officers, agents or employees. These interpretations are also subject to our general terms and conditions set out in our current Price Schedule.

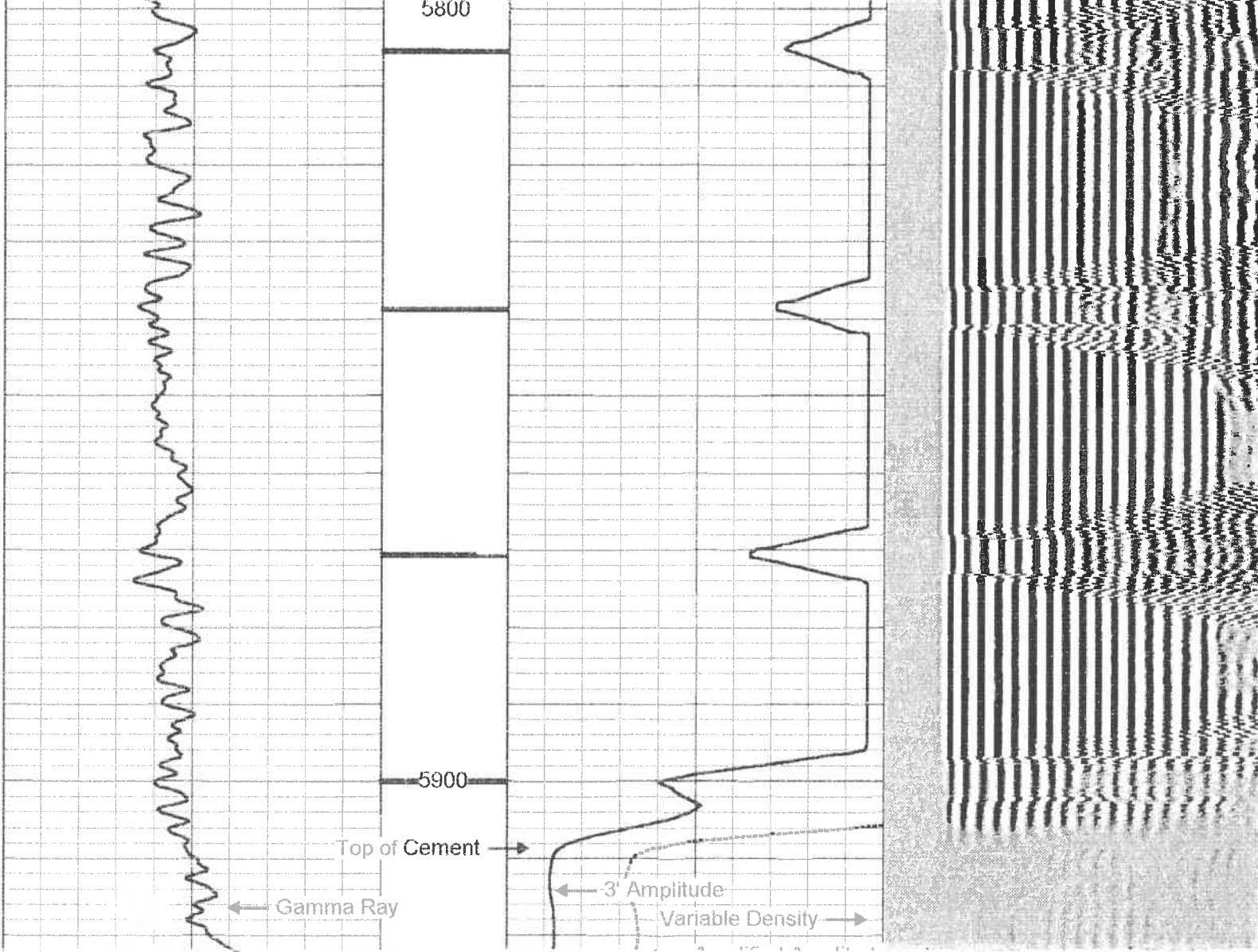
Comments

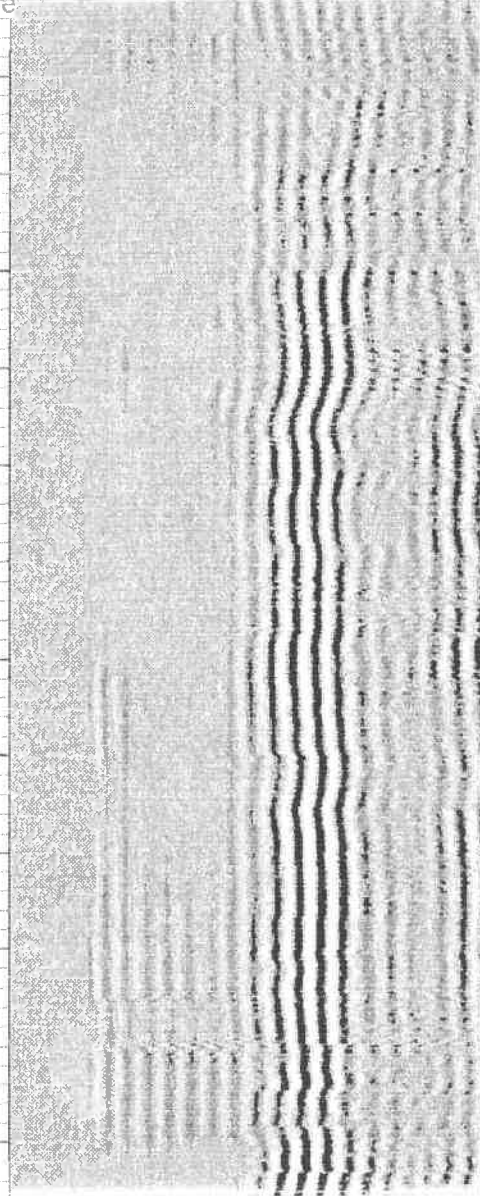
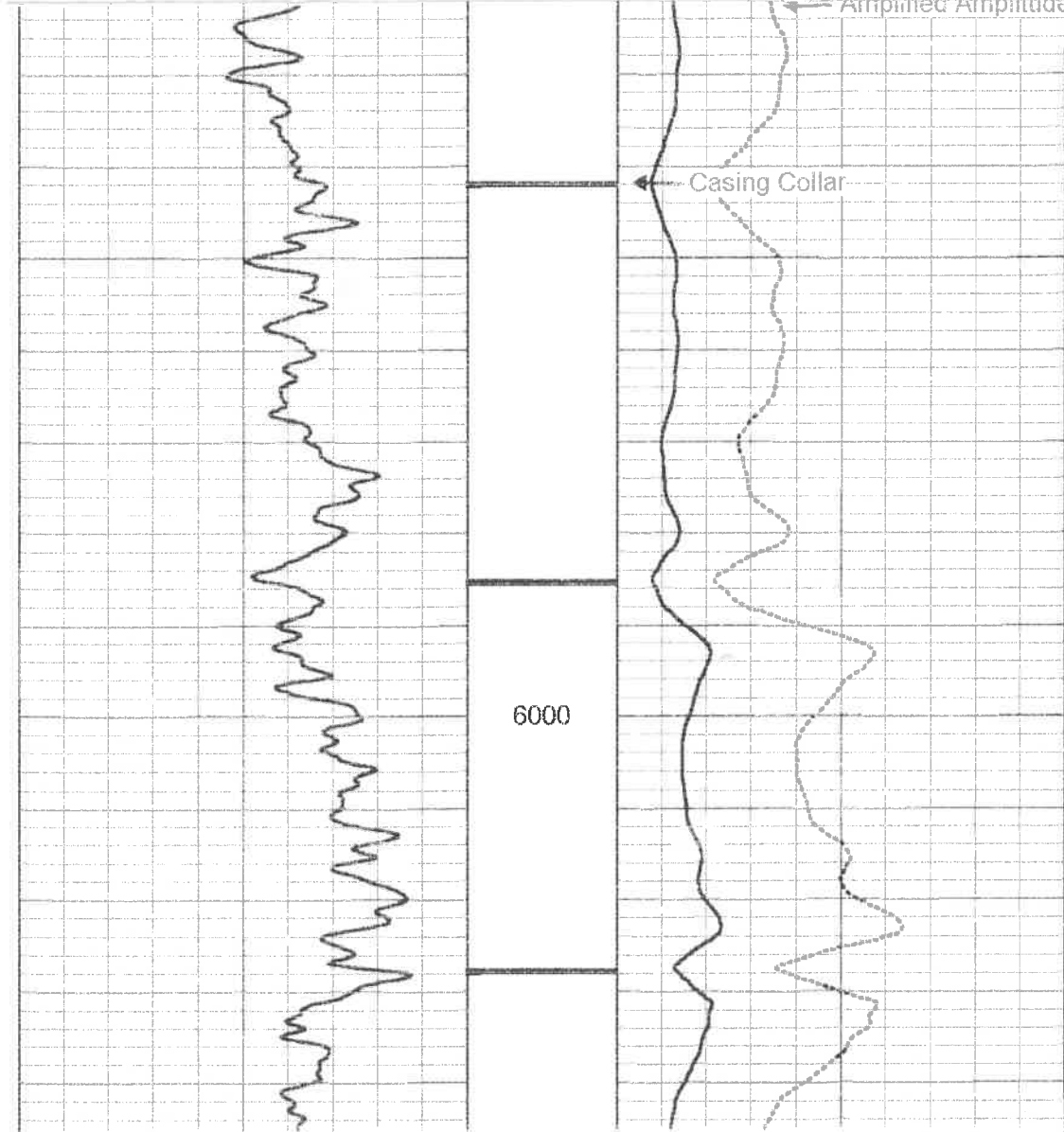
LOG CORRELATED TO FAX COPY
OF CD/DN GAMMA RAY
LOG RAN 24 JAN 2002

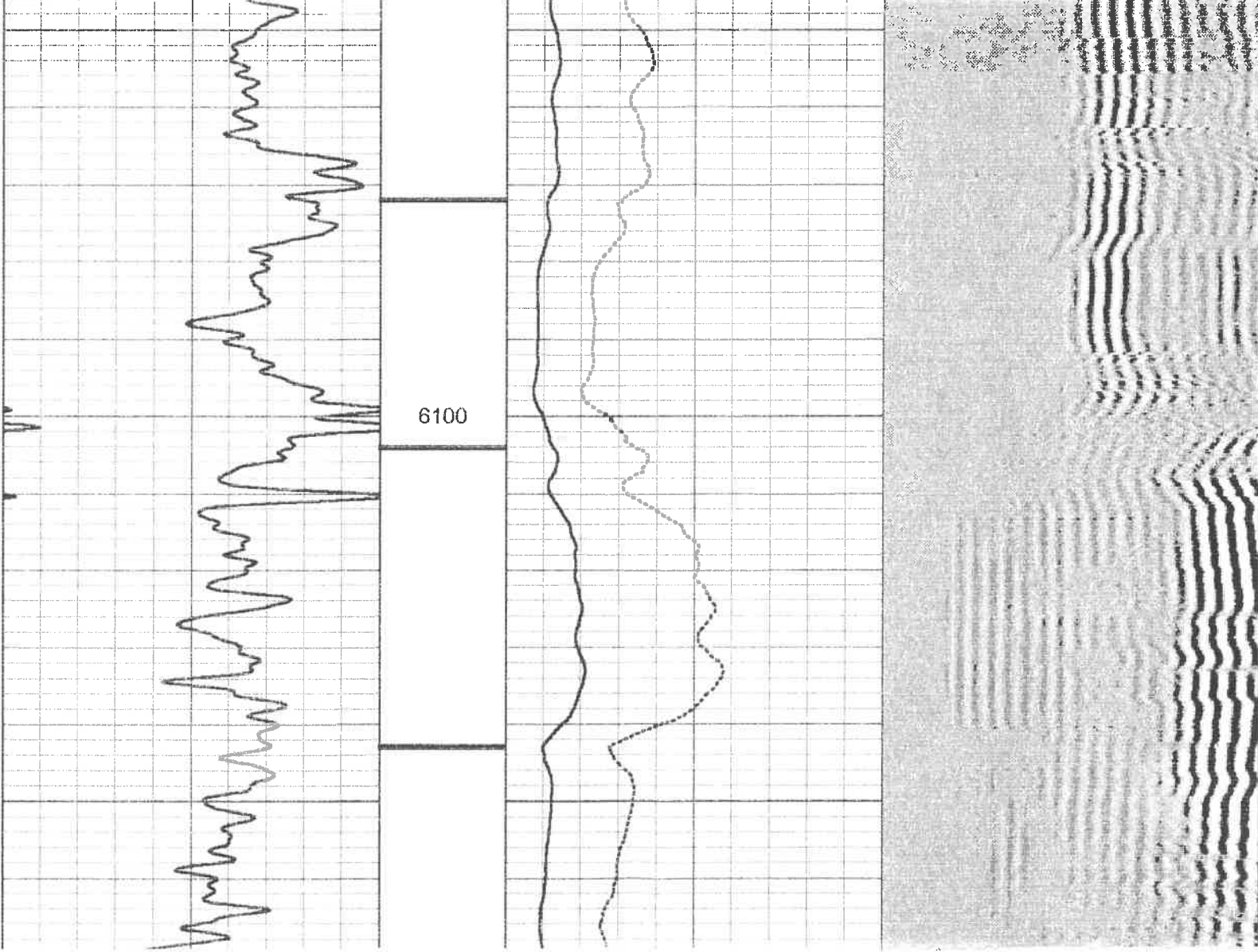
Database File: istok3.db
Dataset Pathname: pass1
Presentation Format: cbix prs
Dataset Creation: Mon Jan 28 09:24:43 2002 by Log VER_5.4
Charted by: Depth in Feet scaled 1:240

0	GR (GAPI)	190	-0.1CCLD.25	-2	Amplitude (mV)	85	200	Variable Density	1200
				-2	Amplified Amplitude (mV)	30			



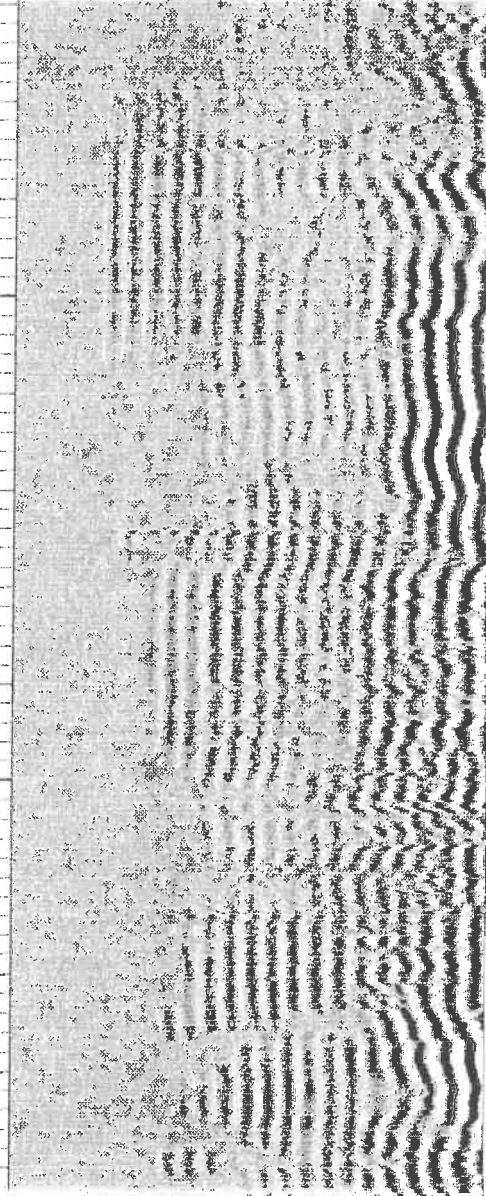
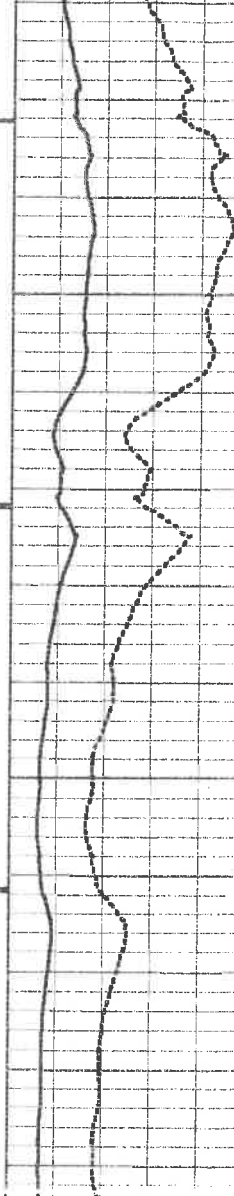






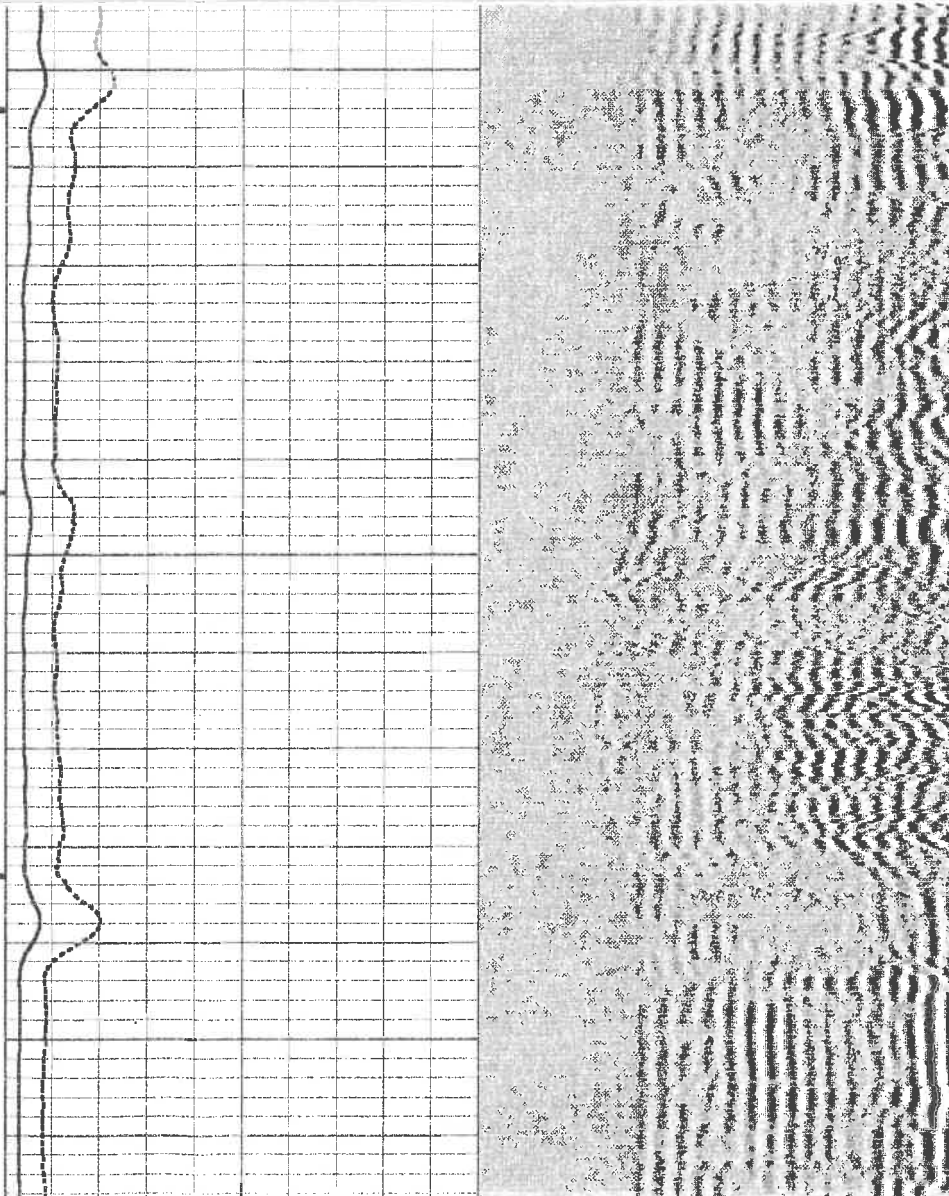


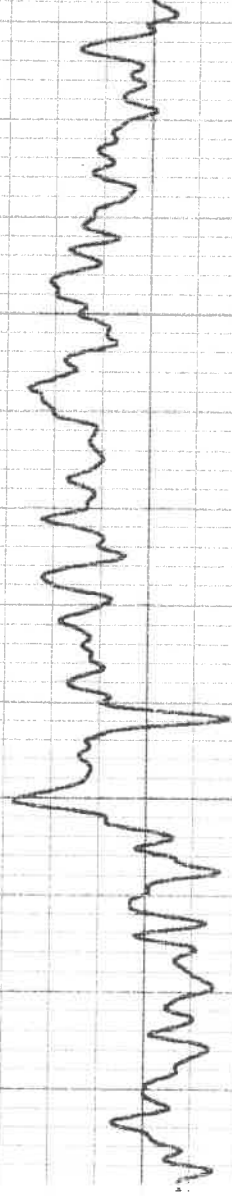
6200



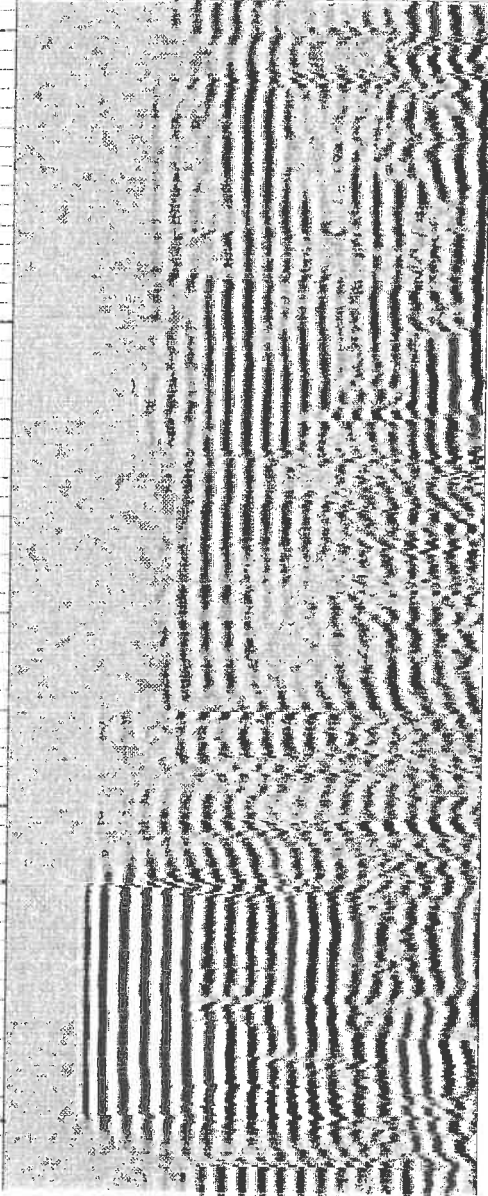
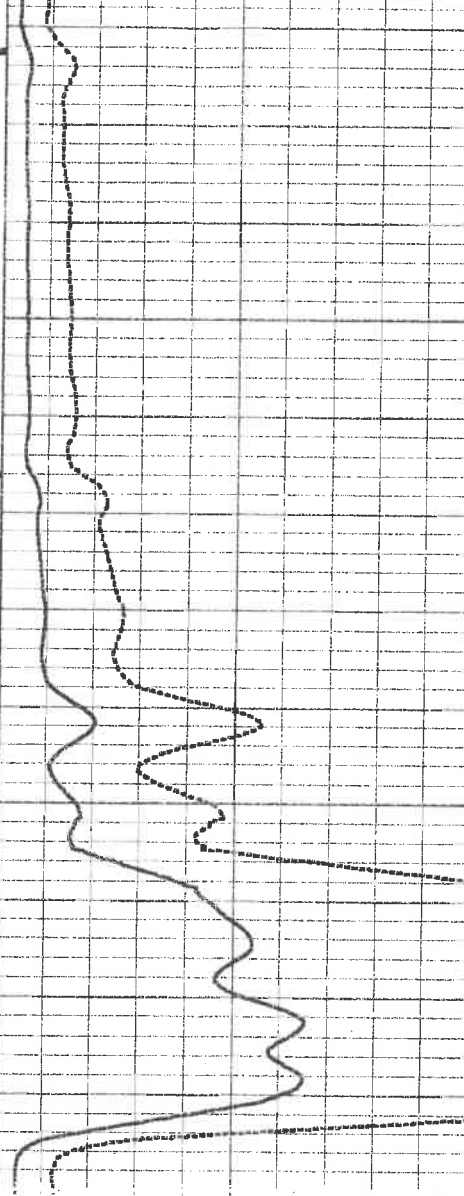
6300

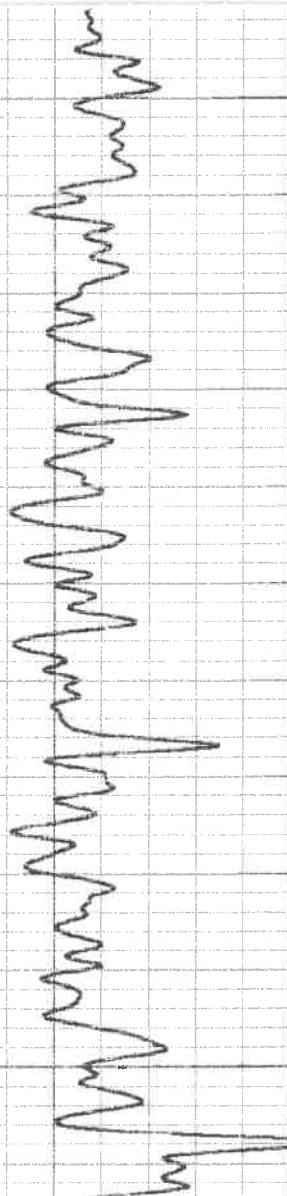
6400



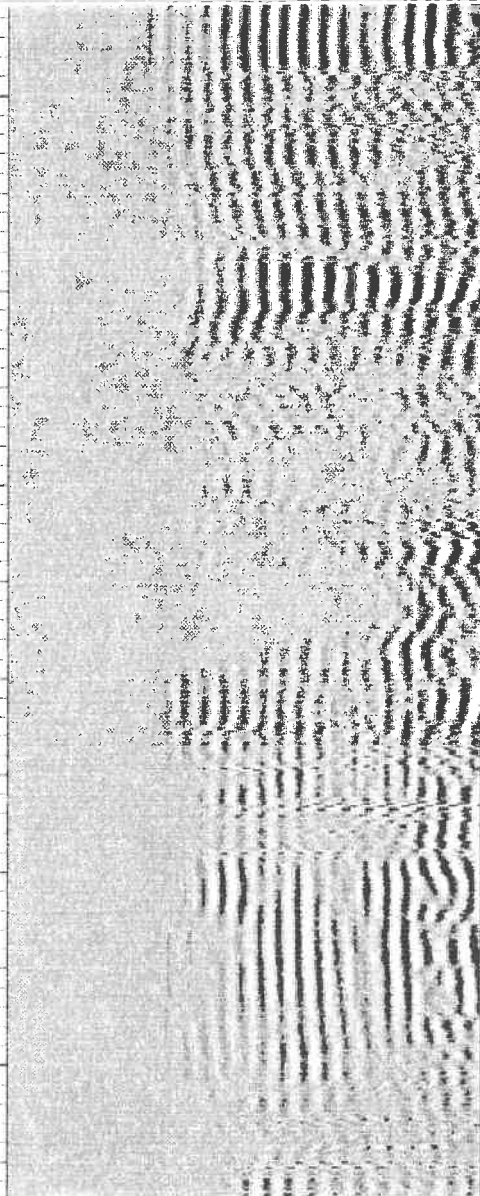
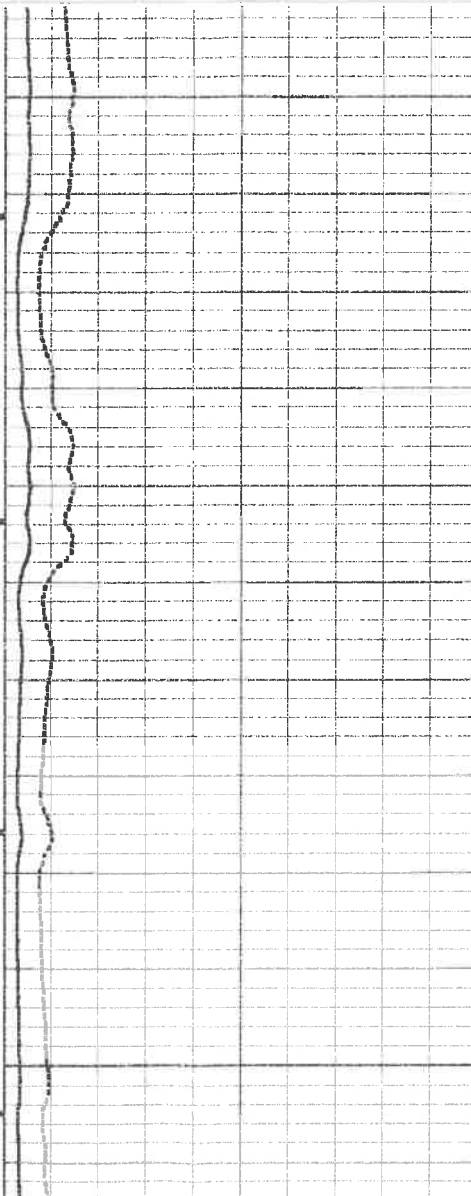


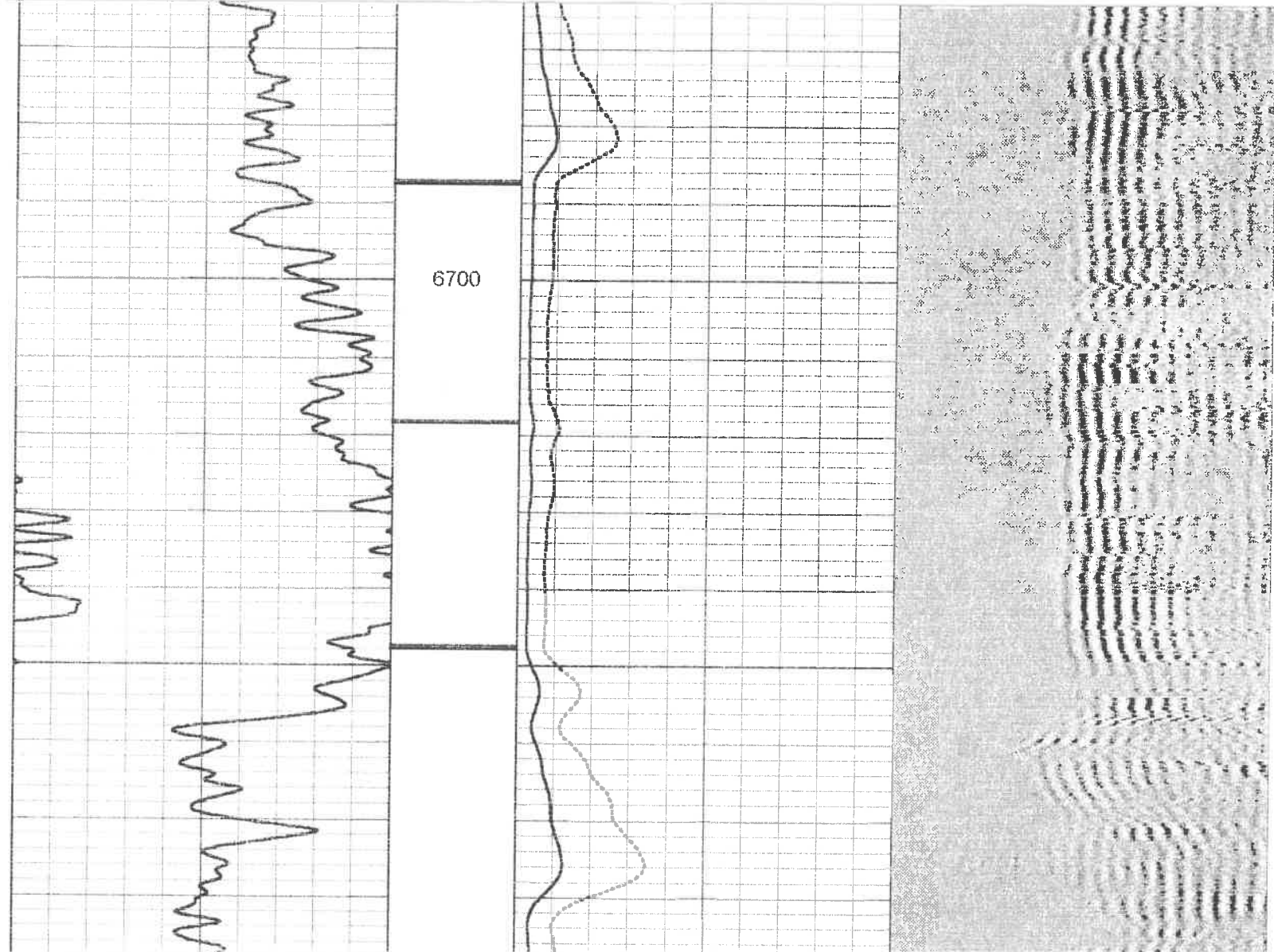
6500

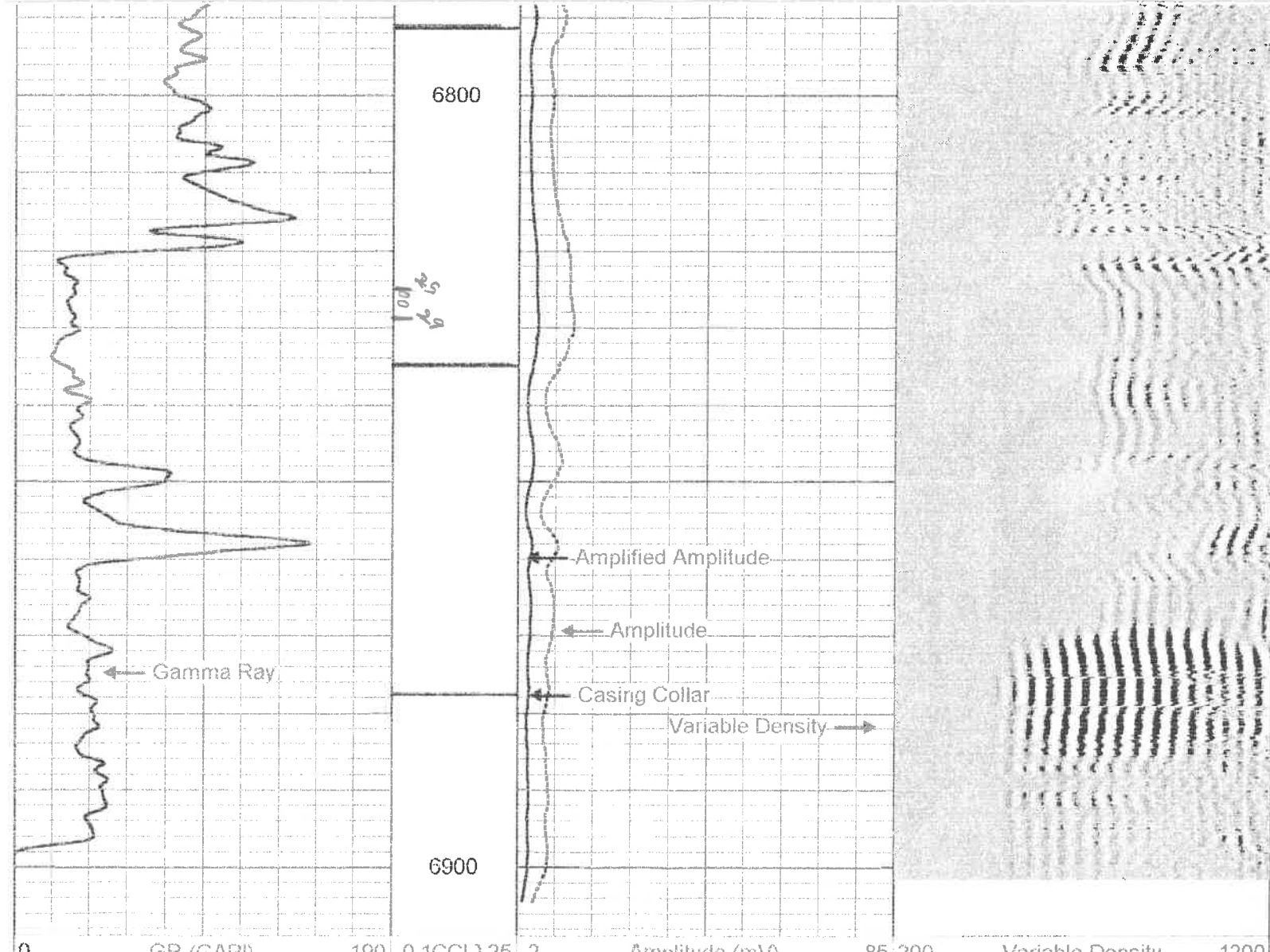




6600







-2 Amplified Amplitude (mV) 30