

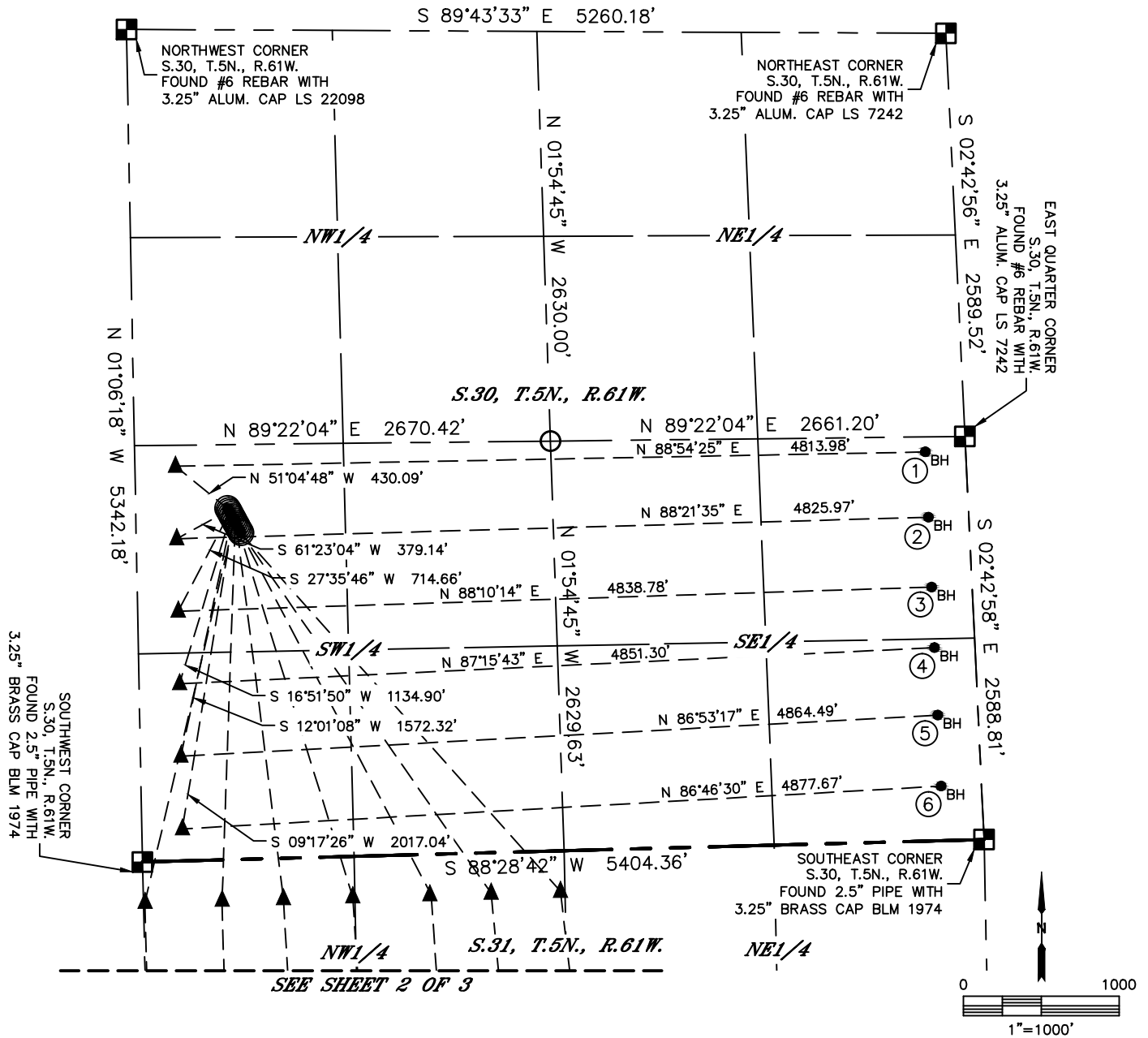


Lat40°, Inc. 6250 W. 10th Street, Unit 2, Greeley, CO 970-515-5294

# MULTI-WELL PLAN

## PRONGHORN 13-30 PAD

SECTION: 30  
TOWNSHIP: 5N  
RANGE: 61W  
6TH. P.M.  
WELD COUNTY, CO



#	WELL NAME	BHL FOOTAGE	BHL LAT °	BHL LONG °	BHL S-T-R
1	STATE PRONGHORN FEDERAL C-W-30HNB	2496 FSL 260 FEL	40.37135	-104.24342	30-5-61
2	STATE PRONGHORN FEDERAL 13-43-30HNB	2077 FSL 260 FEL	40.37020	-104.24337	30-5-61
3	STATE PRONGHORN FEDERAL D13-X43-30HNB	1628 FSL 260 FEL	40.36897	-104.24331	30-5-61
4	STATE PRONGHORN FEDERAL D14-X44-30HNB	1239 FSL 260 FEL	40.36790	-104.24327	30-5-61
5	STATE PRONGHORN FEDERAL 14-44-30HNB	806 FSL 260 FEL	40.36671	-104.24322	30-5-61
6	STATE PRONGHORN FEDERAL E14-Y44-30HNB	350 FSL 260 FEL	40.36546	-104.24316	30-5-61
7	PRONGHORN FEDERAL A-E-31HNB	260 FSL 10 FWL	40.35038	-104.26137	31-5-61
8	PRONGHORN FEDERAL A11-E14-31HNB	260 FSL 523 FWL	40.35041	-104.25953	31-5-61
9	PRONGHORN FEDERAL F11-J14-31HNB	260 FSL 1065 FWL	40.35043	-104.25759	31-5-61
10	PRONGHORN FEDERAL F-J-31HNB	260 FSL 1548 FWL	40.35045	-104.25585	31-5-61
11	PRONGHORN FEDERAL F21-J24-31HNB	260 FSL 2061 FWL	40.35048	-104.25401	31-5-61
12	PRONGHORN FEDERAL K21-O24-31HNB	260 FSL 2573 FWL	40.35050	-104.25218	31-5-61
13	STATE PRONGHORN FEDERAL K-O-31HNB	260 FSL 2272 FEL	40.35053	-104.25023	31-5-61

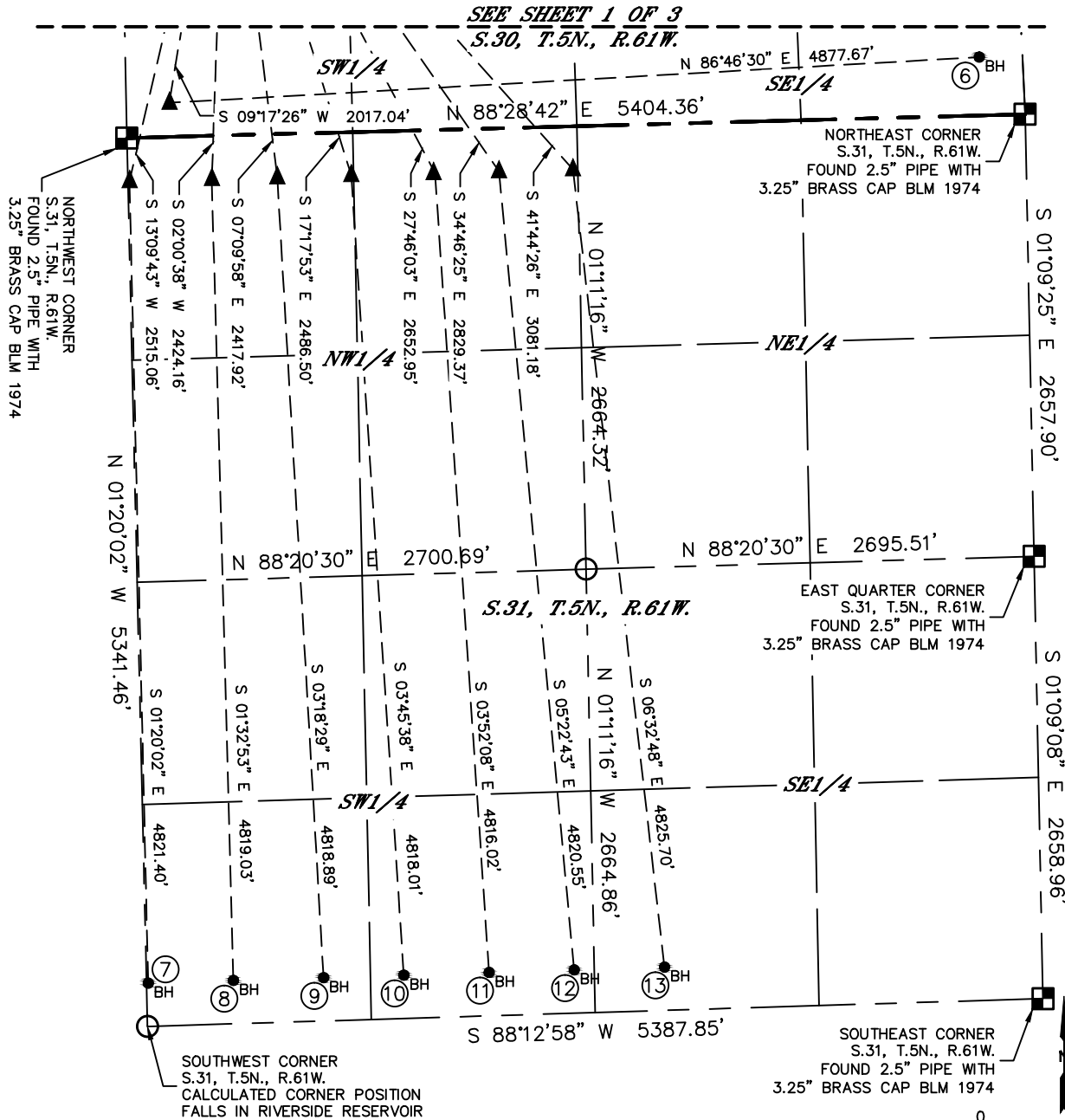
- LEGEND
- = ALIQUOT MONUMENT AS DESCRIBED
  - = CALCULATED POSITION
  - = SURFACE HOLE LOCATION (SHL)
  - ▲ = ENTRY POINT LOCATION (EP)
  - ◆ = TOP OF PRODUCTION ZONE (TPZ)
  - <sub>BH</sub> = BOTTOM HOLE LOCATION (BHL)



# MULTI-WELL PLAN

## PRONGHORN 13-30 PAD

SECTION: 30  
TOWNSHIP: 5N  
RANGE: 61W  
6TH. P.M.  
WELD COUNTY, CO



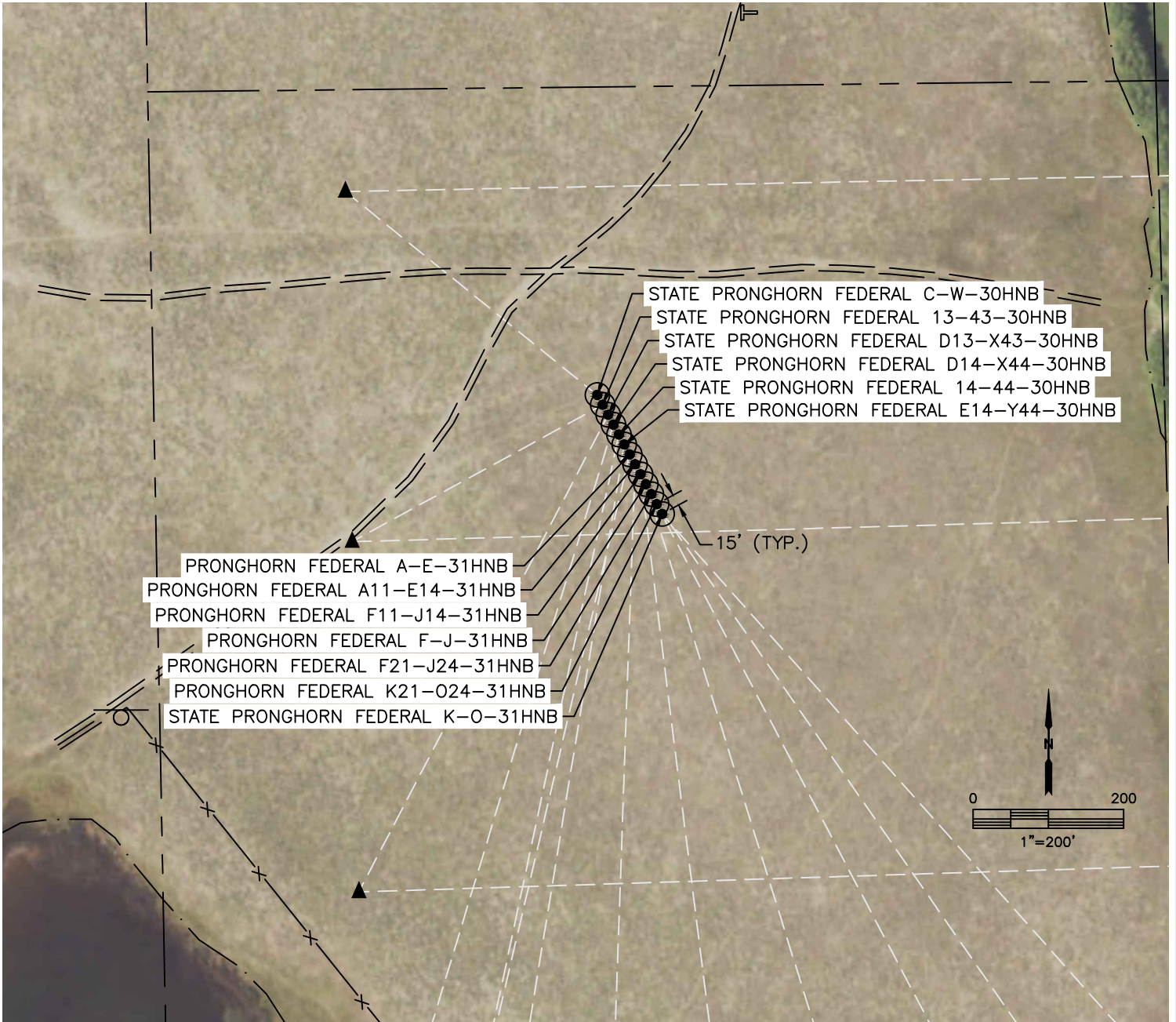
#	WELL NAME	BHL FOOTAGE			BHL LAT °	BHL LONG °	BHL S-T-R	
1	STATE PRONGHORN FEDERAL C-W-30HNB	2496	FSL	260	FEL	40.37135	-104.24342	30-5-61
2	STATE PRONGHORN FEDERAL 13-43-30HNB	2077	FSL	260	FEL	40.37020	-104.24337	30-5-61
3	STATE PRONGHORN FEDERAL D13-X43-30HNB	1628	FSL	260	FEL	40.36897	-104.24331	30-5-61
4	STATE PRONGHORN FEDERAL D14-X44-30HNB	1239	FSL	260	FEL	40.36790	-104.24327	30-5-61
5	STATE PRONGHORN FEDERAL 14-44-30HNB	806	FSL	260	FEL	40.36671	-104.24322	30-5-61
6	STATE PRONGHORN FEDERAL E14-Y44-30HNB	350	FSL	260	FEL	40.36546	-104.24316	30-5-61
7	PRONGHORN FEDERAL A-E-31HNB	260	FSL	10	FWL	40.35038	-104.26137	31-5-61
8	PRONGHORN FEDERAL A11-E14-31HNB	260	FSL	523	FWL	40.35041	-104.25953	31-5-61
9	PRONGHORN FEDERAL F11-J14-31HNB	260	FSL	1065	FWL	40.35043	-104.25759	31-5-61
10	PRONGHORN FEDERAL F-J-31HNB	260	FSL	1548	FWL	40.35045	-104.25585	31-5-61
11	PRONGHORN FEDERAL F21-J24-31HNB	260	FSL	2061	FWL	40.35048	-104.25401	31-5-61
12	PRONGHORN FEDERAL K21-O24-31HNB	260	FSL	2573	FWL	40.35050	-104.25218	31-5-61
13	STATE PRONGHORN FEDERAL K-O-31HNB	260	FSL	2272	FEL	40.35053	-104.25023	31-5-61

- LEGEND
- = ALIQUOT MONUMENT AS DESCRIBED
  - = CALCULATED POSITION
  - = SURFACE HOLE LOCATION (SHL)
  - ▲ = ENTRY POINT LOCATION (EP)
  - ◆ = TOP OF PRODUCTION ZONE (TPZ)
  - <sub>BH</sub> = BOTTOM HOLE LOCATION (BHL)



**MULTI-WELL PLAN**  
**PRONGHORN 13-30 PAD**

SECTION: 30  
 TOWNSHIP: 5N  
 RANGE: 61W  
 6TH. P.M.  
 WELD COUNTY, CO



#	WELL NAME	SHL FOOTAGE			SHL LAT °	SHL LONG °	SHL PDOP	SHL ELEV (FT.)	SHL 1/4/1/4	SHL S-T-R
1	STATE PRONGHORN FEDERAL C-W-30HNB	2253	FSL	589	FWL	40.37053	-104.25950	1.4	4526	NWSW 30-5-61
2	STATE PRONGHORN FEDERAL 13-43-30HNB	2240	FSL	596	FWL	40.37049	-104.25948	1.4	4526	NWSW 30-5-61
3	STATE PRONGHORN FEDERAL D13-X43-30HNB	2226	FSL	603	FWL	40.37046	-104.25945	1.4	4526	NWSW 30-5-61
4	STATE PRONGHORN FEDERAL D14-X44-30HNB	2213	FSL	610	FWL	40.37042	-104.25943	1.7	4526	NWSW 30-5-61
5	STATE PRONGHORN FEDERAL 14-44-30HNB	2200	FSL	617	FWL	40.37038	-104.25940	1.7	4526	NWSW 30-5-61
6	STATE PRONGHORN FEDERAL E14-Y44-30HNB	2186	FSL	624	FWL	40.37035	-104.25938	1.7	4526	NWSW 30-5-61
7	PRONGHORN FEDERAL A-E-31HNB	2173	FSL	631	FWL	40.37031	-104.25935	1.7	4526	NWSW 30-5-61
8	PRONGHORN FEDERAL A11-E14-31HNB	2160	FSL	638	FWL	40.37027	-104.25933	2.3	4527	NWSW 30-5-61
9	PRONGHORN FEDERAL F11-J14-31HNB	2146	FSL	645	FWL	40.37024	-104.25930	2.3	4527	NWSW 30-5-61
10	PRONGHORN FEDERAL F-J-31HNB	2133	FSL	652	FWL	40.37020	-104.25928	2.3	4527	NWSW 30-5-61
11	PRONGHORN FEDERAL F21-J24-31HNB	2119	FSL	659	FWL	40.37017	-104.25925	2.3	4527	NWSW 30-5-61
12	PRONGHORN FEDERAL K21-O24-31HNB	2106	FSL	665	FWL	40.37013	-104.25923	2.3	4528	NWSW 30-5-61
13	STATE PRONGHORN FEDERAL K-O-31HNB	2093	FSL	672	FWL	40.37009	-104.259203	2.3	4528	NWSW 30-5-61