



Lat40°, Inc. 6250 W. 10th Street, Unit 2, Greeley, CO 970-515-5294

ACCESS ROAD MAP

PRONGHORN 13-30 PAD

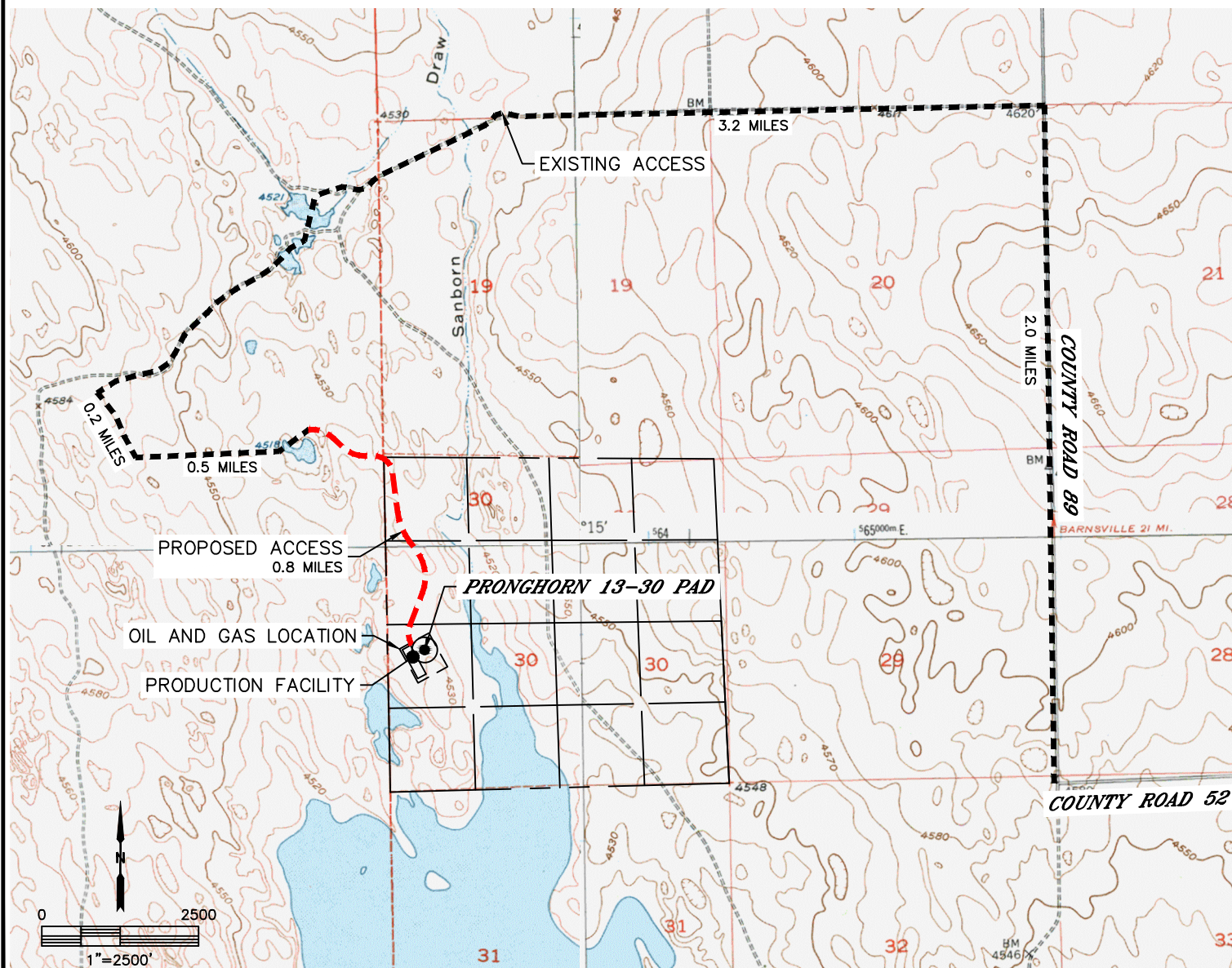
SECTION: 30
TOWNSHIP: 5N
RANGE: 61W
6TH. P.M.
WELD COUNTY, CO

PROPOSED WELLS:

STATE PRONGHORN FEDERAL C-W-30HNB
STATE PRONGHORN FEDERAL 13-43-30HNB
STATE PRONGHORN FEDERAL D13-X43-30HNB
STATE PRONGHORN FEDERAL D14-X44-30HNB
STATE PRONGHORN FEDERAL 14-44-30HNB
STATE PRONGHORN FEDERAL E14-Y44-30HNB
PRONGHORN FEDERAL A-E-31HNB
PRONGHORN FEDERAL A11-E14-31HNB
PRONGHORN FEDERAL F11-J14-31HNB
PRONGHORN FEDERAL F-J-31HNB
PRONGHORN FEDERAL F21-J24-31HNB
PRONGHORN FEDERAL K21-024-31HNB
STATE PRONGHORN FEDERAL K-O-31HNB

DRIVING DIRECTIONS TO PRONGHORN 13-30 PAD

FROM THE INTERSECTION OF COUNTY ROAD 52 AND COUNTY ROAD 89, DRIVE NORTH ON COUNTY ROAD 89 FOR 2.0 MILES, TURN LEFT ONTO AN EXISTING ACCESS ROAD FOR 3.2 MILES, TURN LEFT OFF THE MAIN EXISTING ACCESS ROAD TO ANOTHER EXISTING ACCESS FOR 0.7 MILES TO THE PROPOSED ACCESS ROAD. CONTINUE ON THE PROPOSED ACCESS ROAD FOR 0.8 MILES TO THE PRONGHORN 13-30 PAD ON THE SOUTH SIDE OF THE ROAD.





Lat40°, Inc. 6250 W. 10th Street, Unit 2, Greeley, CO 970-515-5294

ACCESS ROAD MAP

PRONGHORN 13-30 PAD

SECTION: 30
TOWNSHIP: 5N
RANGE: 61W
6TH. P.M.
WELD COUNTY, CO

