

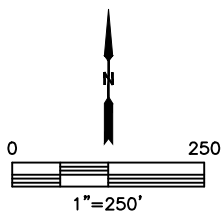
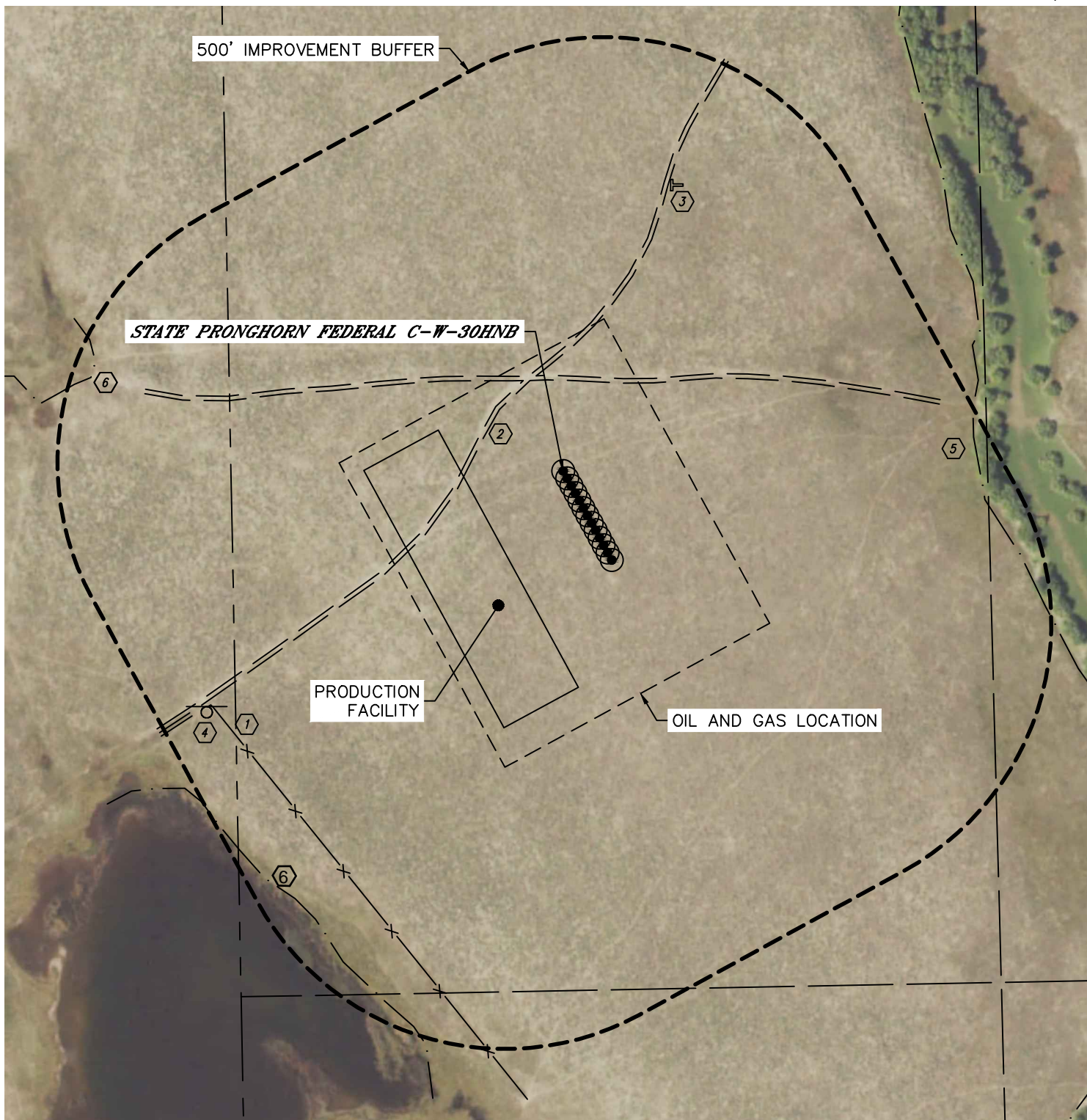


Lat40°, Inc. 6250 W. 10th Street, Unit 2, Greeley, CO 970-515-5294

LOCATION DRAWING

PRONGHORN 13-30 PAD

SECTION: 30
TOWNSHIP: 5N
RANGE: 61W
6TH. P.M.
WELD COUNTY, CO





Lat40°, Inc. 6250 W. 10th Street, Unit 2, Greeley, CO 970-515-5294









LOCATION DRAWING

PRONGHORN 13-30 PAD

SECTION: 30
TOWNSHIP: 5N
RANGE: 61W
6TH. P.M.
WELD COUNTY, CO

IMPROVEMENTS:

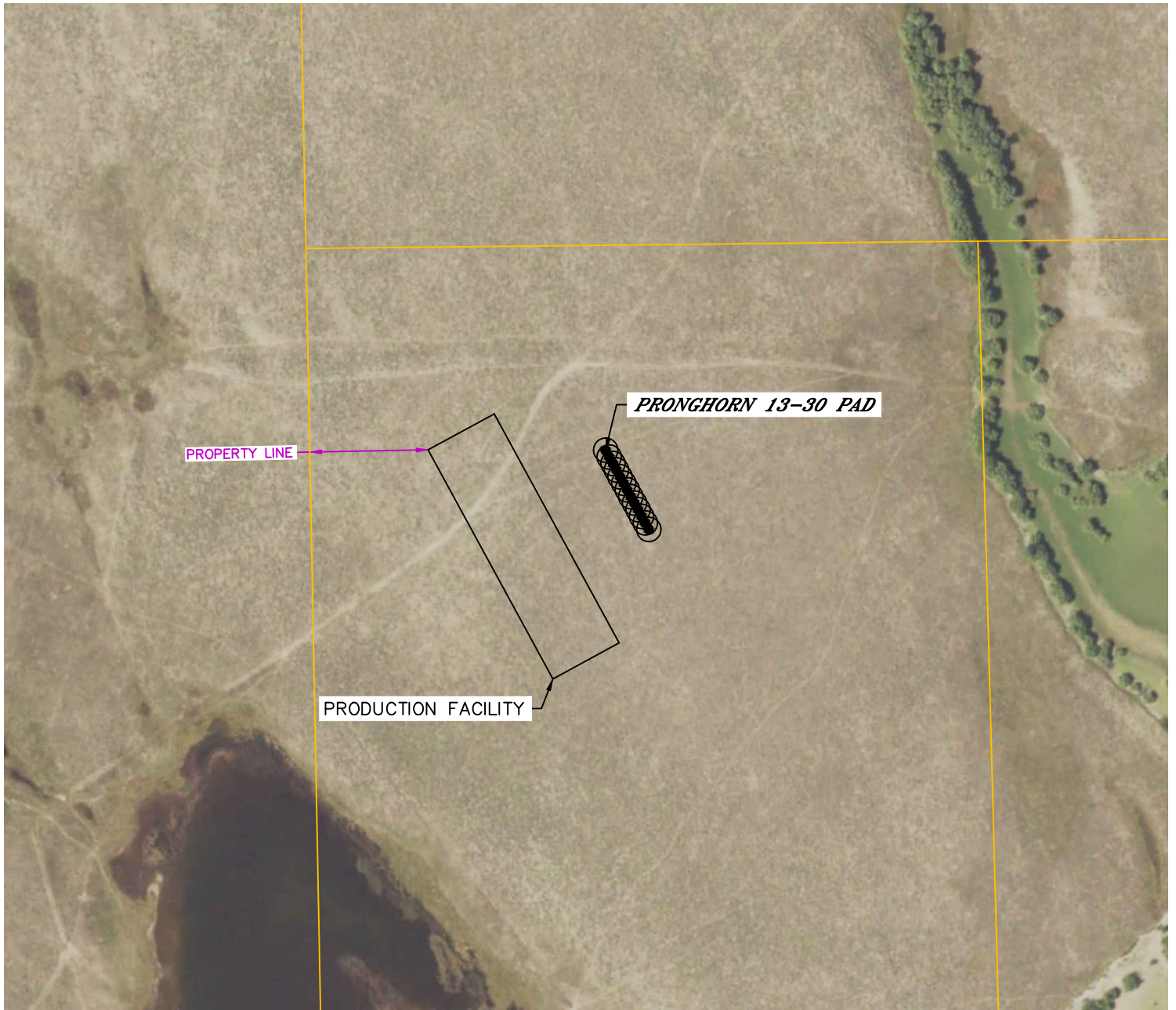
(MEASURED FROM THE PROPOSED STATE PRONGHORN FEDERAL C-W-30HNB WELL LOCATION)

-  NO BUILDING UNITS WITHIN 500' IMPROVEMENT BUFFER
-  NO BUILDINGS WITHIN 500' IMPROVEMENT BUFFER
-  FENCE 747' SW
-  ROAD/ GRAVEL 152' NW, 161' N
-  T-POST 543' NE
-  SIGN 758' SW
-  RIVERSIDE RESERVOIR 731' E
-  LOW AREA 854' NW, SURFACE WATER 876' SW



CULTURAL ITEMS MAP
PRONGHORN 13-30 PAD

SECTION: 30
 TOWNSHIP: 5N
 RANGE: 61W
 6TH. P.M.
 WELD COUNTY, CO



MEASURED FROM THE NEAREST	PROPOSED WELL HEAD	EDGE OF PRODUCTION FACILITY
BUILDING	5280' +	5280' +
BUILDING UNIT	5280' +	5280' +
HIGH OCCUPANCY BUILDING UNIT	5280' +	5280' +
SCHOOL FACILITY	5280' +	5280' +
SCHOOL PROPERTY LINE	5280' +	5280' +
CHILD CARE CENTER	5280' +	5280' +
DESIGNATED OUTSIDE ACTIVITY AREA	5280' +	5280' +
PUBLIC ROAD	5280' +	5280' +
ABOVE GROUND UTILITY	5280' +	5280' +
RAILROAD	5280' +	5280' +
PROPERTY LINE	±409' N	±236' W

