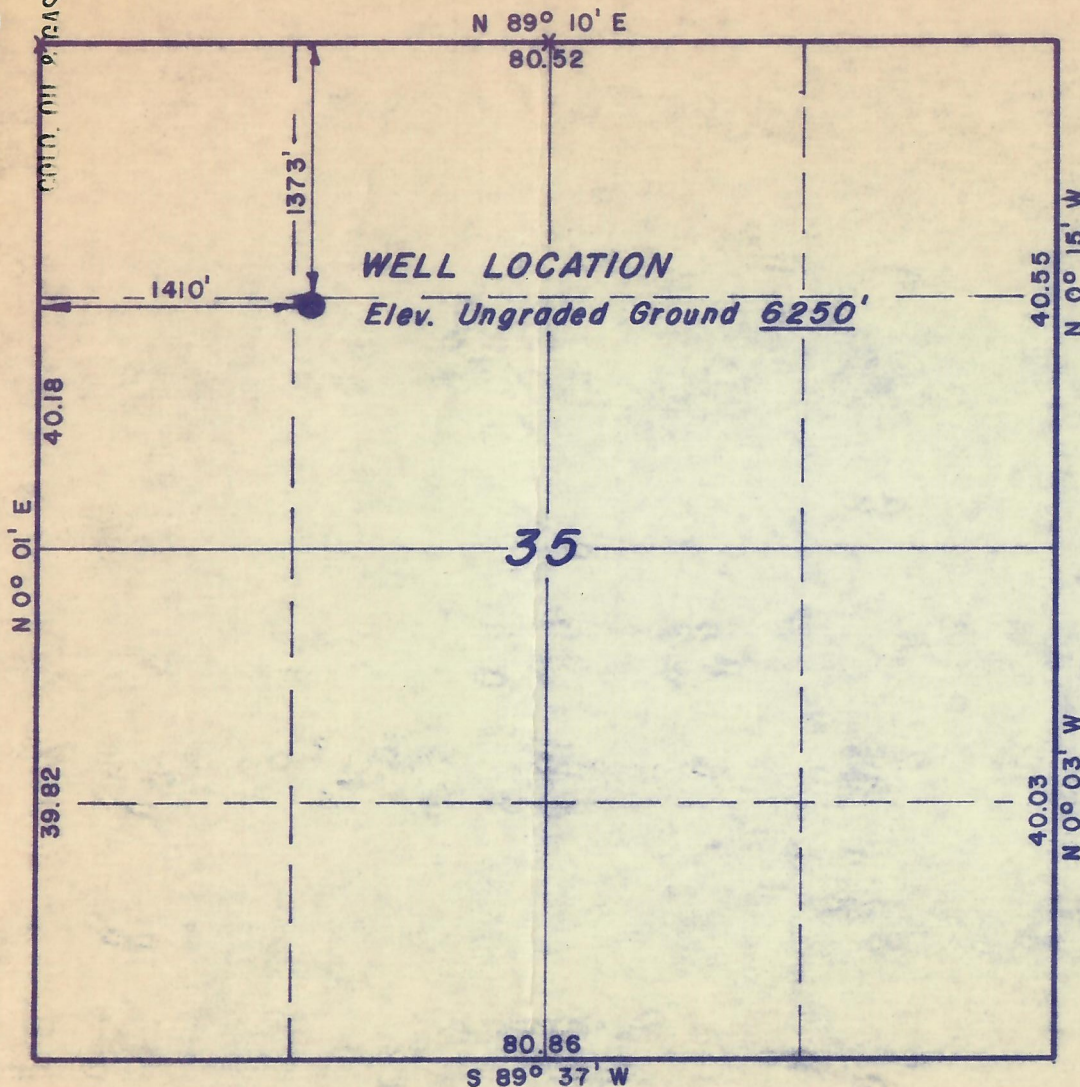


RECEIVED

JAN 10 1974

COLO. DIV. OF REVENUE

T7N, R91W, 6th P.M.



X = Section Corners Located

PROJECT

TREND EXPLORATION LIMITED

Well location, located as shown in the
SE 1/4 NW 1/4 Section 35, T7N, R91W,
6th P.M., Moffat County, Colorado.

#1-35 Schneiderheinz



74-9
~~73-9~~

CERTIFICATE

THIS IS TO CERTIFY THAT THE ABOVE PLAT WAS PREPARED FROM
FIELD NOTES OF ACTUAL SURVEYS MADE BY ME OR UNDER MY
SUPERVISION AND THAT THE SAME ARE TRUE AND CORRECT TO THE
BEST OF MY KNOWLEDGE AND BELIEF.

Dane Stewart

REGISTERED LAND SURVEYOR
REGISTRATION NO 9186
STATE OF COLORADO

UINTAH ENGINEERING & LAND SURVEYING
P.O. BOX Q ~ 110 EAST - FIRST SOUTH
VERNAL, UTAH - 84078

SCALE 1" = 1000'	DATE Jan. 3, 1974
PARTY G.S. L.D.T. R.R. N.D.	REFERENCES GLO Plat
WEATHER Cloudy — Cold	FILE TREND EXPLORATION LIMITED



00251232