

Click here to reset the form

FORM  
21  
Rev 9/14

State of Colorado  
Oil and Gas Conservation Commission



1120 Lincoln Street, Suite 801, Denver, Colorado 80203 (303)-894-2100 Fax: (303)-894-2109

FOR OGCC USE ONLY

Document Number:

Date Received:

MECHANICAL INTEGRITY TEST

1. Duration of the pressure test must be a minimum of 15 minutes.
2. An original pressure chart must accompany this report if this test was not witnessed by a OGCC representative. Injection wells tests must be witnessed by an OGCC representative.
3. For production wells, test pressures must be at a minimum of 300 psig.
4. New injection wells must be tested to maximum requested injection pressure.
5. For injection wells, test pressures must be at least 300 psig or average injection pressure, whichever is greater.
6. A minimum 300 psi differential pressure must be maintained between the tubing and tubing/casing annulus pressure.
7. Do not use this form if submitting under provisions of Rule 326.a.(1) B. or C.
8. OGCC notification must be provided 10 days prior to the test via Form 42.
9. Packers or bridge plugs, etc., must be set within 100 feet of the perforated interval to be considered a valid test.

Complete the  
Attachment Checklist

OGCC Operator Number: 16700 Contact Name and Telephone  
Name of Operator: Chevron U.S.A. Inc Anita Sanford  
Address: 100 Chevron Road No: (970) 675-3842  
City: Rangely State: CO Zip: 81648 Email: atlx@chevron.com  
API Number: 05-103-05452 OGCC Facility ID Number: 47443 / Rangely Field 72370  
Well/Facility Name: HEFLEY M.E. Well/Facility Number: 2  
Location QtrQtr: SENW Section: 2 Township: 2N Range: 102W Meridian: 6th

	Oper	OGCC
Pressure Chart	✓	
Cement Bond Log		
Tracer Survey		
Temperature Survey		
Inspection Number		✓

☐ SHUT-IN PRODUCTION WELL

☒ INJECTION WELL

Last MIT Date:

Test Type:

☐ Test to Maintain SI/TA status

☒ 5-year UIC

☐ Reset Packer

☐ Verification of Repairs

☐ Annual UIC Test

Describe Repairs or Other Well Activities:

Wellbore Data at Time of Test

Injection/Producing Zone(s) Perforated Interval: Open Hole Interval:  
Weber 5730-6290

Casing Test

Use when perforations or open hole is isolated by bridge plug or cement plug; use if cased-hole only with plug back total depth.

Bridge Plug or Cement Plug Depth

Tubing Casing/Annulus Test

Tubing Size: Tubing Depth: Top Packer Depth: Multiple Packers?  
2 7/8' 5502 5407 ☒ Yes ☐ No

Test Data

Test Date	Well Status During Test	Casing Pressure Before Test	Initial Tubing Pressure	Final Tubing Pressure
01/31/2020	TEMPORARY ABANDONED			
Casing Pressure Start Test	Casing Pressure - 5 Min.	Casing Pressure - 10 Min.	Casing Pressure Final Test	Pressure Loss or Gain During Test
350	352	355	355	+5

Test Witnessed by State Representative?

☒ Yes

☐ No

OGCC Field Representative (Print Name):

Chuck Browning

I hereby certify that the statements made in this form are, to the best of my knowledge, true, correct, and complete.

Print Name: Anita Sanford Form 42# 402292668

Field Inspection # 6938 01377

Signed: Title: Regulatory Tech. Assistant

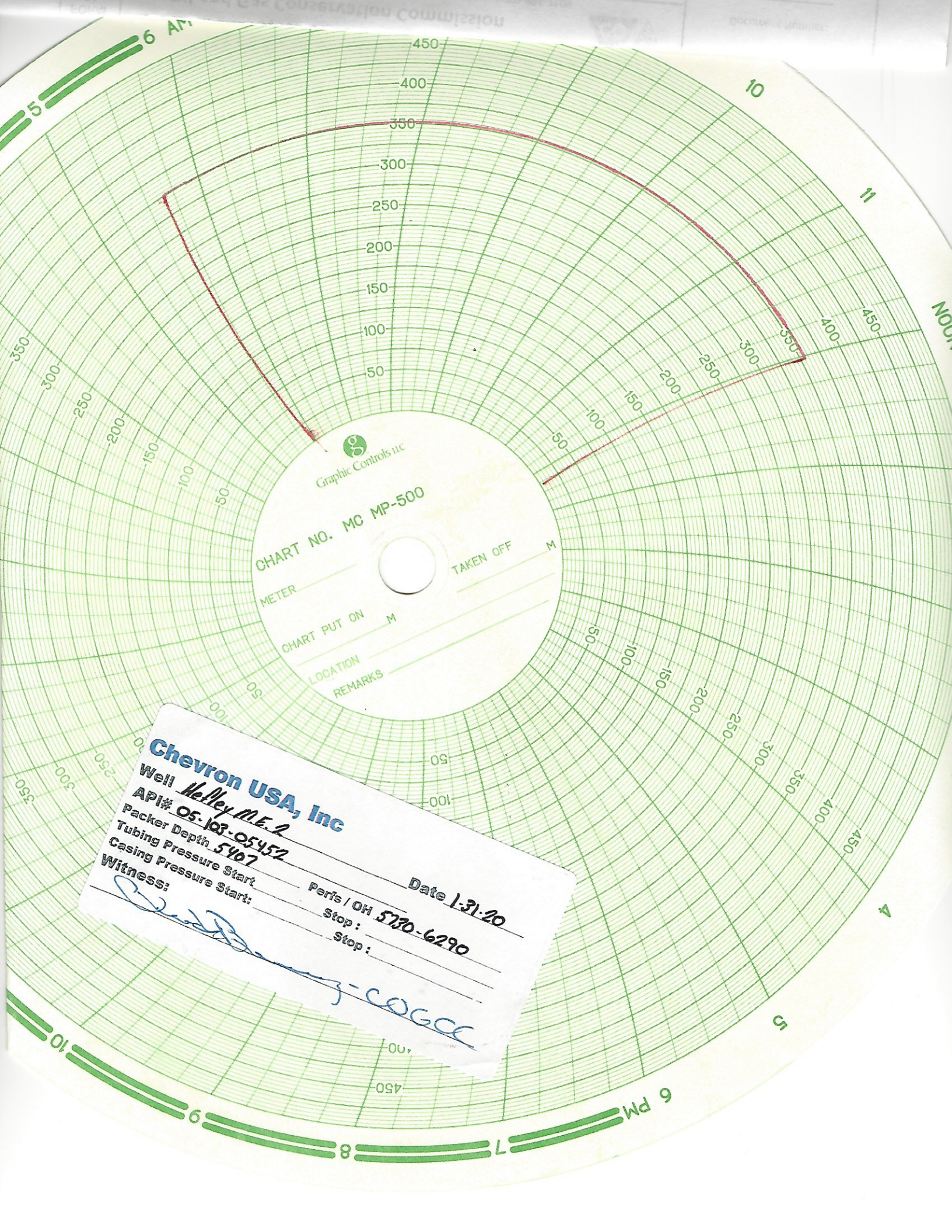
Date: 01/31/2020

OGCC Approval: Title: N.W. INSPECTOR

Date: 01/31/2020

Conditions of Approval, if any:





Graphic Controls LLC

CHART NO. MC MP-500

METER \_\_\_\_\_ TAKEN OFF \_\_\_\_\_ M  
CHART PUT ON \_\_\_\_\_ M  
LOCATION \_\_\_\_\_  
REMARKS \_\_\_\_\_

**Chevron USA, Inc**

Well McNey M.E. 2

API# 05-103-05452

Packer Depth 5907

Tubing Pressure Start \_\_\_\_\_

Casing Pressure Start \_\_\_\_\_

Witness: \_\_\_\_\_

[Signature] - COGCC

Date 1-31-20

Perfs / OH 5730-6290

Stop: \_\_\_\_\_

Stop: \_\_\_\_\_