



## **FIGURES**

**Figure 1: Monitoring Well Soil Analytical Map**

**Figure 2: Groundwater Analytical Map (01/23/20)**

**Figure 3: Groundwater Elevation Map (01/23/20)**



### LEGEND

- X APPROXIMATE RELEASE LOCATIONS
- - - APPROXIMATE EXCAVATION BOUNDARIES
- - - APPROXIMATE 50-FOOT TREE SETBACK (DURING EXCAVATION ACTIVITIES)
- ⊙ APPROXIMATE MONITORING WELL LOCATIONS
- ⊙ DESTROYED (DES) MONITORING WELL LOCATIONS

### PARAMETERS

SOIL SAMPLE LOCATION  
DATE  
DEPTH (FEET)

B = BENZENE (mg/kg)  
T = TOLUENE (mg/kg)  
E = ETHYLBENZENE (mg/kg)  
X = TOTAL XYLENES (mg/kg)  
N = NAPHTHALENE (mg/kg)  
G = TPH-GRO (mg/kg)  
D = TPH-DRO (mg/kg)

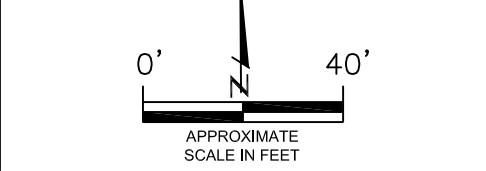
mg/kg = MILLIGRAMS PER KILOGRAM

TPH-GRO = TOTAL PETROLEUM HYDROCARBONS - GASOLINE RANGE ORGANICS  
TPH-DRO = TOTAL PETROLEUM HYDROCARBONS - DIESEL RANGE ORGANICS

NOTE: VALUES PRESENTED WITH A LESS THAN SYMBOL (<) DID NOT CONTAIN CONCENTRATIONS AT OR ABOVE LABORATORY DETECTION LIMITS

VALUES PRESENTED IN **BOLD** TYPEFACE CONTAIN CONCENTRATIONS EXCEEDING COGCC TABLE 910-1 REGULATORY LIMITS.

COGCC - COLORADO OIL AND GAS CONSERVATION COMMISSION

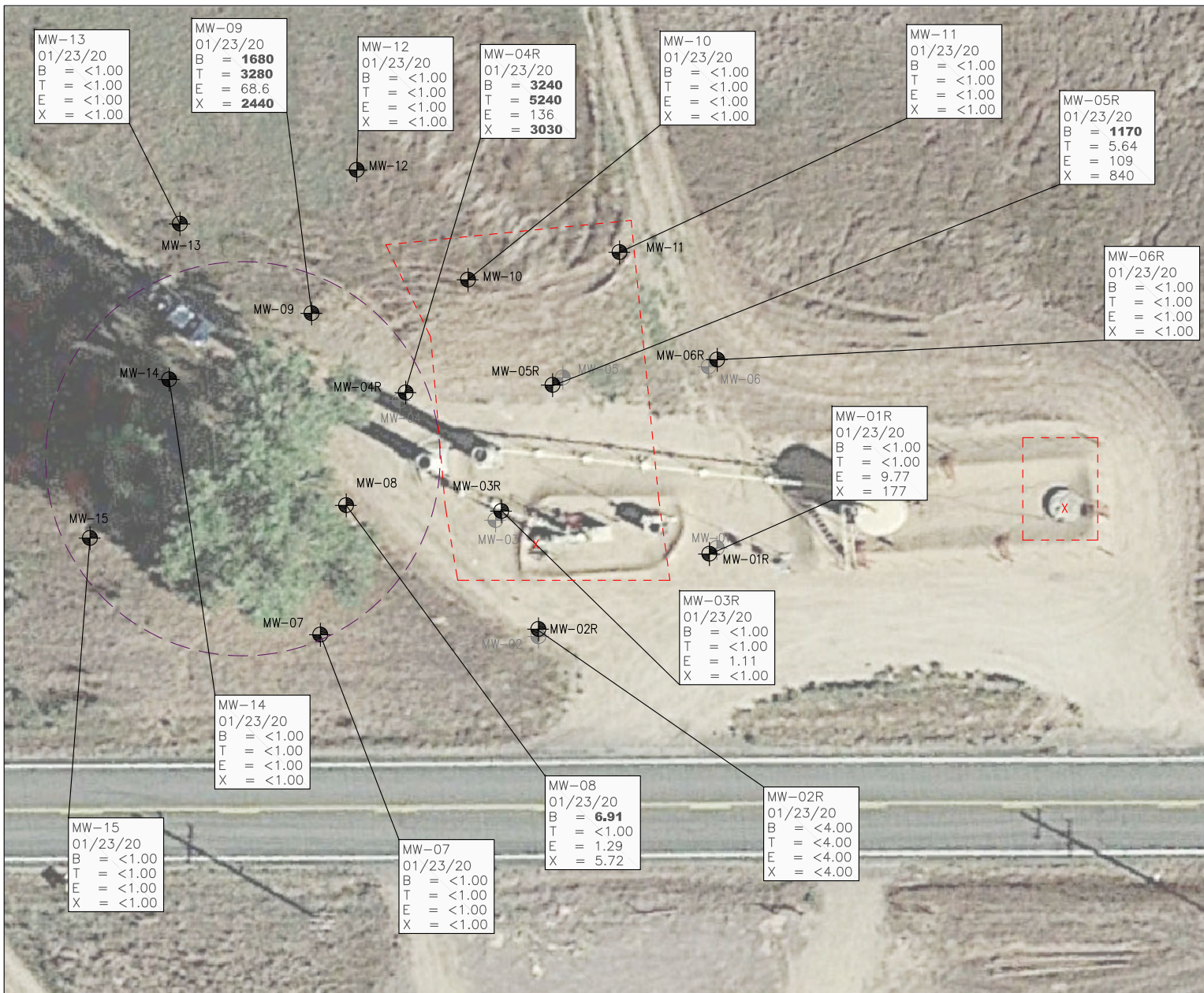


MONITORING WELL SOIL ANALYTICAL MAP  
GEMINI B #31-11, 12, 13, 14, 25  
FLOW LINE RELEASE  
40.348611 / -104.597026  
SE1/4 SW1/4 SEC.31 T5N R64W 6PM  
WELD COUNTY, COLORADO  
REMEDIATION # 12355

DATE: 01/30/20  
DRAWN BY: GEC  
FIG. NO. 1

**EAGLE ENVIRONMENTAL CONSULTING, INC.**  
8000 W 44th Ave, Wheat Ridge, CO 80033  
Ph: 303-433-0479 • F: 303-325-5449

NOTE: ALL FACILITIES HAVE BEEN REMOVED FROM THE SITE - SHOWN FOR ILLUSTRATIVE PURPOSES RELATIVE TO RELEASE LOCATIONS.



NOTE: ALL FACILITIES HAVE BEEN REMOVED FROM THE SITE - SHOWN FOR ILLUSTRATIVE PURPOSES RELATIVE TO RELEASE LOCATIONS.

**LEGEND**

- X APPROXIMATE RELEASE LOCATIONS
- - - APPROXIMATE EXCAVATION BOUNDARIES
- - - APPROXIMATE 50-FOOT TREE SETBACK (DURING EXCAVATION ACTIVITIES)
- ⊕ APPROXIMATE MONITORING WELL LOCATIONS
- ⊕ DESTROYED (DES) MONITORING WELL LOCATIONS

**PARAMETERS**

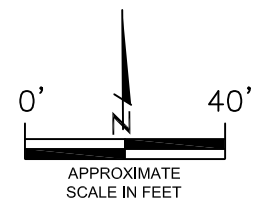
SAMPLE LOCATION	
DATE	
B	= BENZENE (µg/L)
T	= TOLUENE (µg/L)
E	= ETHYLBENZENE (µg/L)
X	= TOTAL XYLENES (µg/L)

µg/L = MICROGRAMS PER LITER

VALUES PRESENTED WITH A LESS THAN SYMBOL (<) DID NOT CONTAIN CONCENTRATIONS AT OR ABOVE LABORATORY DETECTION LIMITS.

VALUES PRESENTED IN **BOLD** TYPEFACE EXCEED COGCC TABLE 910-1 REGULATORY LIMITS.

COGCC - COLORADO OIL AND GAS CONSERVATION COMMISSION



**GROUNDWATER ANALYTICAL MAP**  
 (01/23/20)  
 GEMINI B #31-11, 12, 13, 14, 25  
 FLOW LINE RELEASE  
 40.348611 / -104.597026  
 SE1/4 SW1/4 SEC.31 T5N R64W 6PM  
 WELD COUNTY, COLORADO  
 REMEDIATION # 12355

DATE:  
01/30/20  
 DRAWN BY:  
GEC  
 FIG.  
NO. 2

**EAGLE**  
 ENVIRONMENTAL  
 CONSULTING, INC.  
 8000 W 44th Ave, Wheat Ridge, CO 80033  
 Ph: 303-433-0479 • F: 303-325-5449



NOTE: ALL FACILITIES HAVE BEEN REMOVED FROM THE SITE - SHOWN FOR ILLUSTRATIVE PURPOSES  
RELATIVE TO RELEASE LOCATIONS.

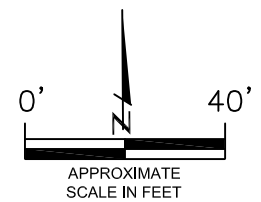
**LEGEND**

- X APPROXIMATE RELEASE LOCATIONS
- APPROXIMATE EXCAVATION BOUNDARIES
- APPROXIMATE 50-FOOT TREE SETBACK (DURING EXCAVATION ACTIVITIES)
- ⊗ APPROXIMATE MONITORING WELL LOCATIONS
- ⊗ DESTROYED (DES) MONITORING WELL LOCATIONS
- APPROXIMATE GROUNDWATER FLOW DIRECTION
- (92.26) RELATIVE GROUNDWATER ELEVATION (FT.)
- INFERRED GROUNDWATER ELEVATION CONTOUR (FT.)

FT. = FEET

NOTE:

GROUNDWATER ELEVATION DATA WAS COLLECTED ON 01/23/20. MONITORING WELL MW-11 WAS NOT USED IN THE CONSTRUCTION OF THE INFERRED GROUNDWATER ELEVATION CONTOURS.



GROUNDWATER ELEVATION MAP  
(01/23/20)  
GEMINI B #31-11, 12, 13, 14, 25  
FLOW LINE RELEASE  
40.348611 / -104.597026  
SE1/4 SW1/4 SEC.31 T5N R64W 6PM  
WELD COUNTY, COLORADO  
REMEDIAION # 12355

DATE:	01/30/20
DRAWN BY:	GEC
FIG. NO.	3

**EAGLE**  
ENVIRONMENTAL  
CONSULTING, INC.  
8000 W 44th Ave, Wheat Ridge, CO 80033  
Ph: 303-433-0479 • F: 303-325-5449



## **TABLES**

**Table 1: Soil Analytical Results Summary**

**Table 2: Groundwater Analytical Results Summary**

**Table 3: Groundwater Elevation Summary**

**TABLE 1**  
**SOIL ANALYTICAL RESULTS SUMMARY**  
**GEMINI B #31-11, 12, 13, 14, 25**  
**FLOW LINE RELEASE**  
**40.348611 / -104.597026**  
**SE¼ SW¼ SEC.31 T5N R64W 6PM**  
**WELD COUNTY, COLORADO**  
**REMEDATION # 12355**

Sample Location (Latitude/Longitude)	Date	Approximate Depth (feet)	Benzene (mg/kg)	Toluene (mg/kg)	Ethylbenzene (mg/kg)	Total Xylenes (mg/kg)	Naphthalene (mg/kg)	TPH-GRO (mg/kg)	TPH-DRO (mg/kg)	Specific Conductance (mmhos/cm)	pH (pH units)	SAR
<b>COGCC Table 910-1 Regulatory Limits (mg/kg)</b>			<b>0.17</b>	<b>85</b>	<b>100</b>	<b>175</b>	<b>23</b>	<b>500</b>		<b>&lt;4</b>	<b>6 to 9</b>	<b>&lt;12</b>
MW-01 @ 7.5-10' (40.348598/-104.596953)	10/17/18	7.5-10	<0.050	<0.050	0.116	1.64	<0.200	165	<50.0	NA	NA	NA
MW-01 @ 12.5-15' (40.348598/-104.596953)	10/17/18	12.5-15	0.012	0.011	<0.002	<0.002	<0.008	<0.200	<50.0	NA	NA	NA
MW-02 @ 7.5-10' (40.348562/-104.597124)	10/17/18	7.5-10	0.008	0.008	0.002	<0.002	<0.008	<0.200	<50.0	NA	NA	NA
MW-02 @ 17.5-20' (40.348562/-104.597124)	10/17/18	17.5-20	0.025	0.023	<0.002	0.007	<0.008	<0.200	<50.0	NA	NA	NA
MW-03 @ 7.5-10' (40.348624/-104.597153)	10/17/18	7.5-20	<b>87.2</b>	<b>533</b>	48.6	<b>749</b>	<0.200	<b>13500</b>	<b>1390</b>	NA	NA	NA
MW-03 @ 15-17.5' (40.348624/-104.597153)	10/17/18	15-17.5	<0.002	<0.002	<0.002	<0.002	<0.008	<0.200	<50.0	NA	NA	NA
MW-04 @ 5-7.5' (40.348710/-104.597192)	10/17/18	5-7.5	0.114	0.377	0.356	5.82	<0.200	186	<50.0	NA	NA	NA
MW-04 @ 10-12.5' (40.348710/-104.597192)	10/17/18	10-12.5	<0.002	<0.002	<0.002	<0.002	<0.008	<0.200	<50.0	NA	NA	NA
MW-05 @ 10-12.5' (40.348709/-104.597051)	10/17/18	10-12.5	<0.002	<0.002	0.008	0.041	<0.008	14.4	<50.0	NA	NA	NA
MW-05 @ 12.5-15' (40.348709/-104.597051)	10/17/18	12.5-15	<0.002	<0.002	<0.002	<0.002	<0.008	<0.200	<50.0	NA	NA	NA
MW-06 @ 10-12.5' (40.348710/-104.596927)	10/17/18	10-12.5	<0.050	<0.050	<0.050	0.272	<0.200	<b>839</b>	151	NA	NA	NA
MW-06 @ 12.5-15' (40.348710/-104.596927)	10/17/18	12.5-15	<0.002	<0.002	<0.002	<0.002	<0.008	0.588	<50.0	NA	NA	NA
SS-01 @ 4-5' (40.348617/-104.597021)	10/17/18	4-5	<0.002	<0.002	<0.002	<0.002	<0.008	<0.200	<50.0	NA	NA	NA
SB-01 @ 7.5-10' (40.348624/-104.597237)	10/25/18	7.5-10	<b>39.6</b>	<b>244</b>	21.8	<b>342</b>	<2.00	<b>8110</b>	<b>1590</b>	NA	NA	NA
MW-07 @ 10-12' (40.348557/-104.597285)	12/17/18	10-12	0.014	0.004	<0.002	<0.002	<0.008	<0.200	<50.0	NA	NA	NA
MW-08 @ 5-7.5' (40.348649/-104.597266)	12/17/18	5-7.5	<b>1.92</b>	7.35	3.84	57.0	0.398	<b>1220</b>	420	NA	NA	NA
AS-01 @ 10-12.5' (40.348589/-104.597179)	12/17/18	10-12.5	<0.050	0.075	0.134	0.920	<0.200	79.7	<50.0	NA	NA	NA

**TABLE 1**  
**SOIL ANALYTICAL RESULTS SUMMARY**  
**GEMINI B #31-11, 12, 13, 14, 25**  
**FLOW LINE RELEASE**  
**40.348611 / -104.597026**  
**SE¼ SW¼ SEC.31 T5N R64W 6PM**  
**WELD COUNTY, COLORADO**  
**REMEDATION # 12355**

Sample Location (Latitude/Longitude)	Date	Approximate Depth (feet)	Benzene (mg/kg)	Toluene (mg/kg)	Ethylbenzene (mg/kg)	Total Xylenes (mg/kg)	Naphthalene (mg/kg)	TPH-GRO (mg/kg)	TPH-DRO (mg/kg)	Specific Conductance (mmhos/cm)	pH (pH units)	SAR
<b>COGCC Table 910-1 Regulatory Limits (mg/kg)</b>			<b>0.17</b>	<b>85</b>	<b>100</b>	<b>175</b>	<b>23</b>	<b>500</b>		<b>&lt;4</b>	<b>6 to 9</b>	<b>&lt;12</b>
SVE-01 @ 5-7.5' (40.348607/-104.597219)	12/17/18	5-7.5	<b>0.264</b>	1.18	1.04	12.7	<0.200	<b>269</b>	<b>236</b>	NA	NA	NA
SB-02 @ 7.5-10' (40.348643/-104.597406)	12/17/18	7.5-10	0.002	0.002	<0.002	0.005	<0.008	0.480	<50.0	NA	NA	NA
*N.Wall @ 3'	01/21/19	3	<0.0020	<0.0050	<0.0050	<0.010	<0.010	<50	<50	0.475	8.50	0.459
*E. Wall @ 3'	01/21/19	3	<0.0020	<0.0050	<0.0050	<0.010	<0.010	<50	<50	NA	NA	NA
*S. Wall @ 3'	01/21/19	3	<0.0020	<0.0050	<0.0050	<0.010	<0.010	<50	<50	NA	NA	NA
*W. Wall @ 3'	01/21/19	3	<0.0020	<0.0050	<0.0050	<0.010	<0.010	<50	<50	NA	NA	NA
*Floor @ 6'	01/21/19	6	<b>1.70</b>	6.80	7.40	130	4.7	<50	<b>4200</b>	NA	NA	NA
*Floor @ 14'	01/21/19	14	<0.0020	<0.0050	<0.0050	<0.010	<0.010	<50	<50	NA	NA	NA
PH-01 @ 12' (40.345582 / -104.596848)	02/15/19	12	<0.050	<0.050	<0.050	<0.050	<0.200	24.7	<50.0	NA	NA	NA
PH-01 @ 15' (40.345582 / -104.596848)	02/15/19	15	<0.050	<0.050	<0.050	<0.050	<0.200	<5.00	<50.0	NA	NA	NA
PH-02 @ 12' (40.348588 / -104.596697)	02/15/19	12	<0.050	<0.050	<0.050	<0.050	<0.200	<5.00	<50.0	NA	NA	NA
PH-02 @ 15' (40.348588 / -104.596697)	02/15/19	15	<0.050	<0.050	<0.050	<0.050	<0.200	<5.00	<50.0	NA	NA	NA
PH-04 @ 16' (40.348698 / -104.596548)	02/15/19	16	<0.050	<0.050	0.172	1.49	<0.200	164	75.6	NA	NA	NA
PH-05 @ 12' (40.348691 / -104.596748)	02/15/19	12	<0.050	<0.050	<0.050	<0.050	<0.200	116	255	NA	NA	NA
PH-05 @ 16' (40.348691 / -104.596748)	02/15/19	16	<0.050	<0.050	<0.050	0.298	<0.200	97.2	106	NA	NA	NA
PH-06 @ 12' (40.348700 / -104.596932)	02/15/19	12	<0.050	<0.050	<0.050	<0.050	<0.200	9.93	<50.0	NA	NA	NA
PH-06 @ 15' (40.348700 / -104.596932)	02/15/19	15	<0.050	<0.050	<0.050	<0.050	<0.200	<5.00	<50.0	NA	NA	NA

**TABLE 1**  
**SOIL ANALYTICAL RESULTS SUMMARY**  
**GEMINI B #31-11, 12, 13, 14, 25**  
**FLOW LINE RELEASE**  
**40.348611 / -104.597026**  
**SE¼ SW¼ SEC.31 T5N R64W 6PM**  
**WELD COUNTY, COLORADO**  
**REMEDATION # 12355**

Sample Location (Latitude/Longitude)	Date	Approximate Depth (feet)	Benzene (mg/kg)	Toluene (mg/kg)	Ethylbenzene (mg/kg)	Total Xylenes (mg/kg)	Naphthalene (mg/kg)	TPH-GRO (mg/kg)	TPH-DRO (mg/kg)	Specific Conductance (mmhos/cm)	pH (pH units)	SAR
<b>COGCC Table 910-1 Regulatory Limits (mg/kg)</b>			<b>0.17</b>	<b>85</b>	<b>100</b>	<b>175</b>	<b>23</b>	<b>500</b>		<b>&lt;4</b>	<b>6 to 9</b>	<b>&lt;12</b>
PH-07 @ 12' (40.348645 / -104.596554)	02/15/19	12	<0.050	<0.050	<0.050	<0.050	<0.200	<5.00	<50.0	NA	NA	NA
PH-07 @ 15' (40.348645 / -104.596554)	02/15/19	15	<0.050	<0.050	<0.050	0.374	<0.200	57.9	<50.0	NA	NA	NA
PH-08 @ 15' (40.348636 / -104.596655)	02/19/19	15	<0.050	<0.050	0.212	3.60	0.310	177	102	NA	NA	NA
PH-09 @ 12' (40.348622 / -104.596832)	02/19/19	12	<0.050	<0.050	<0.050	0.187	<0.200	75.5	126	NA	NA	NA
PH-09 @ 15' (40.348622 / -104.596832)	02/19/19	15	<0.002	<0.002	<0.002	<0.002	<0.008	0.564	<50.0	NA	NA	NA
PH-10 @ 9' (40.348706 / -104.597034)	02/19/19	9	<b>0.357</b>	2.27	0.823	12.8	<0.200	<b>588</b>	228	NA	NA	NA
PH-10 @ 12' (40.348706 / -104.597034)	02/19/19	12	<0.050	<0.050	<0.050	0.150	<0.200	33.9	<50.0	NA	NA	NA
PH-11 @ 6' (40.348709 / -104.597147)	02/19/19	6	<b>0.920</b>	<0.498	5.20	104	<2.00	<b>7840</b>	<b>1970</b>	NA	NA	NA
PH-11 @ 9' (40.348709 / -104.597147)	02/19/19	9	<0.050	<0.050	0.898	10.4	<0.200	<b>627</b>	454	NA	NA	NA
PH-11 @ 12' (40.348709 / -104.597147)	02/19/19	12	<b>1.08</b>	7.33	1.44	31.1	<2.00	<b>1350</b>	<b>535</b>	NA	NA	NA
PH-12 @ 9' (40.348628 / -104.597160)	02/19/19	9	<0.050	<0.050	0.635	7.63	<2.00	<b>619</b>	278	NA	NA	NA
PH-13 @ 12' (40.348549 / -104.597093)	02/19/19	12	<0.002	<0.002	<0.002	<0.002	<0.008	4.63	<50.0	NA	NA	NA
PH-16 @ 12' (40.349041 / -104.597344)	02/20/19	12	<0.050	<0.050	<0.050	<0.050	<0.200	178	142	NA	NA	NA
PH-24 @ 9' (40.348796 / -104.597209)	02/20/19	9	<b>24.8</b>	<b>174</b>	17.8	<b>282</b>	1.14	<b>10500</b>	<b>1250</b>	NA	NA	NA
PH-25 @ 9' (40.348791 / -104.597137)	02/20/19	9	<b>26.1</b>	<b>196</b>	21.9	<b>329</b>	1.41	<b>14200</b>	<b>2380</b>	NA	NA	NA
PH-26 @ 12' (40.348797 / -104.597033)	02/20/19	12	<0.050	<0.050	0.185	0.768	<0.200	366	115	NA	NA	NA

**TABLE 1**  
**SOIL ANALYTICAL RESULTS SUMMARY**  
**GEMINI B #31-11, 12, 13, 14, 25**  
**FLOW LINE RELEASE**  
**40.348611 / -104.597026**  
**SE¼ SW¼ SEC.31 T5N R64W 6PM**  
**WELD COUNTY, COLORADO**  
**REMIEDIATION # 12355**

Sample Location (Latitude/Longitude)	Date	Approximate Depth (feet)	Benzene (mg/kg)	Toluene (mg/kg)	Ethylbenzene (mg/kg)	Total Xylenes (mg/kg)	Naphthalene (mg/kg)	TPH-GRO (mg/kg)	TPH-DRO (mg/kg)	Specific Conductance (mmhos/cm)	pH (pH units)	SAR
<b>COGCC Table 910-1 Regulatory Limits (mg/kg)</b>			<b>0.17</b>	<b>85</b>	<b>100</b>	<b>175</b>	<b>23</b>	<b>500</b>		<b>&lt;4</b>	<b>6 to 9</b>	<b>&lt;12</b>
EXC-SS-01 @ 11.5' (40.3486215194 / -104.597139237)	09/25/19	11.5	<b>0.256</b>	<0.050	0.743	9.88	<0.200	234	<b>709</b>	NA	NA	NA
EXC-SS-02 @ 11.5' (40.3485942121 / -104.597070343)	09/25/19	11.5	<0.050	<0.050	0.505	6.69	<0.200	209	95.8	NA	NA	NA
EXC-SS-03 @ 11.5' (40.3485997832 / -104.597013759)	09/25/19	11.5	<0.050	<0.050	<0.050	0.634	<0.200	81.2	97.5	NA	NA	NA
EXC-SS-04 @ 11.5' (40.3486347053 / -104.596970218)	09/25/19	11.5	<0.050	<0.050	<0.050	<0.050	<0.200	<5.00	<50.0	NA	NA	NA
EXC-FS-01 @ 13' (40.348614 / -104.597085)	09/25/19	13	<0.050	<0.050	<0.050	<0.050	<0.200	7.49	<50.0	NA	NA	NA
EXC-FS-02 @ 13' (40.348617 / -104.597017)	09/25/19	13	<0.050	<0.050	<0.050	<0.050	<0.200	<5.00	<50.0	NA	NA	NA
EXC-SS-05 @ 11.5' (40.348697246 / -104.596982064)	09/30/19	11.5	<0.050	<0.050	<0.050	<0.050	<0.200	<5.00	<50.0	NA	NA	NA
EXC-SS-06 @ 11.5' (40.348760195 / -104.596995134)	09/30/19	11.5	<0.050	<0.050	<0.050	<0.050	<0.200	<5.00	<50.0	NA	NA	NA
EXC-SS-07 @ 11.5' (40.34882388 / -104.597005546)	09/30/19	11.5	<0.050	<0.050	<0.050	<0.050	<0.200	<5.00	<50.0	NA	NA	NA
EXC-SS-08 @ 11.5' (40.348674693 / -104.597149443)	09/30/19	11.5	<b>0.785</b>	0.080	2.06	29.6	0.325	<b>559</b>	<b>710</b>	NA	NA	NA
EXC-SS-09 @ 11.5' (40.348733627 / -104.597162698)	09/30/19	11.5	<b>1.38</b>	18.7	3.85	66.7	0.376	<b>1020</b>	<b>897</b>	NA	NA	NA
EXC-SS-11 @ 11.5' (40.348845704 / -104.597132648)	09/30/19	11.5	<0.050	0.166	<0.050	0.618	<0.200	<5.00	<50.0	NA	NA	NA
EXC-SS-12 @ 11.5' (40.348853311 / -104.597070372)	09/30/19	11.5	<0.050	<0.050	<0.050	<0.050	<0.200	<5.00	<50.0	NA	NA	NA
EXC-SS-13 @ 11.5' (40.348826318 / -104.597213838)	09/30/19	11.5	<0.050	<0.050	<0.050	<0.050	<0.200	<5.00	<50.0	NA	NA	NA
EXC-SS-14 @ 11.5' (40.348863356 / -104.597199521)	09/30/19	11.5	<0.050	<0.050	<0.050	<0.050	<0.200	<5.00	<50.0	NA	NA	NA
EXC-FS-03 @ 13' (40.348683 / -104.597022)	09/30/19	13	<0.050	0.056	<0.050	0.662	<0.200	11.1	<50.0	NA	NA	NA
EXC-FS-04 @ 13' (40.348749 / -104.597039)	09/30/19	13	<0.050	<0.050	<0.050	<0.050	<0.200	<5.00	<50.0	NA	NA	NA

**TABLE 1**  
**SOIL ANALYTICAL RESULTS SUMMARY**  
**GEMINI B #31-11, 12, 13, 14, 25**  
**FLOW LINE RELEASE**  
**40.348611 / -104.597026**  
**SE¼ SW¼ SEC.31 T5N R64W 6PM**  
**WELD COUNTY, COLORADO**  
**REMEDATION # 12355**

Sample Location (Latitude/Longitude)	Date	Approximate Depth (feet)	Benzene (mg/kg)	Toluene (mg/kg)	Ethylbenzene (mg/kg)	Total Xylenes (mg/kg)	Naphthalene (mg/kg)	TPH-GRO (mg/kg)	TPH-DRO (mg/kg)	Specific Conductance (mmhos/cm)	pH (pH units)	SAR
<b>COGCC Table 910-1 Regulatory Limits (mg/kg)</b>			<b>0.17</b>	<b>85</b>	<b>100</b>	<b>175</b>	<b>23</b>	<b>500</b>		<b>&lt;4</b>	<b>6 to 9</b>	<b>&lt;12</b>
EXC-FS-05 @ 13' (40.348810 / -104.597050)	09/30/19	13	<0.050	<0.050	<0.050	<0.050	<0.200	<5.00	<50.0	NA	NA	NA
EXC-FS-06 @ 13' (40.348671 / -104.597107)	09/30/19	13	<0.050	0.535	0.354	6.33	<0.200	102	<b>1740</b>	NA	NA	NA
EXC-FS-07 @ 13' (40.348733 / -104.597118)	09/30/19	13	0.065	0.065	<0.050	0.129	<0.200	<5.00	<50.0	NA	NA	NA
EXC-FS-08 @ 13' (40.348809 / -104.597125)	09/30/19	13	<0.050	0.310	0.066	1.58	<0.200	23.5	<50.0	NA	NA	NA
EXC-FS-09 @ 13' (40.348808 / -104.597185)	09/30/19	13	<0.050	<0.050	<0.050	<0.050	<0.200	<5.00	<50.0	NA	NA	NA
EXC-FS-10 @ 14' (40.348671 / -104.597107)	10/01/01	14	<0.050	<0.050	<0.050	<0.050	<0.200	<5.00	<50.0	NA	NA	NA
EXC-SS-15 @ 14' (40.348705951 / -104.596645238)	10/07/19	14	<0.050	<0.050	<0.050	<0.050	<0.200	<5.00	<50.0	NA	NA	NA
EXC-SS-16 @ 14' (40.348661878 / -104.596607022)	10/07/19	14	<0.050	<0.050	0.178	3.18	<0.200	83.1	132	NA	NA	NA
EXC-SS-17 @ 14' (40.348622581 / -104.596642016)	10/07/19	14	<0.050	<0.050	<0.050	<0.050	<0.200	43.5	201	NA	NA	NA
EXC-SS-18 @ 14' (40.348648714 / -104.596678221)	10/07/19	14	<0.050	<0.050	<0.050	0.124	<0.200	16.0	53.3	NA	NA	NA
EXC-FS-11 @ 15' (-104.596640 / -104.596640)	10/07/19	15	<0.050	<0.050	<0.050	<0.050	<0.200	11.6	<50.0	NA	NA	NA
OB-Composite-01	09/30/19	--	<0.050	<0.050	<0.050	<0.050	<0.200	<5.00	57.1	NA	NA	NA
OB-Composite-02	09/30/19	--	<0.050	<0.050	<0.050	<0.050	<0.200	<5.00	<50.0	NA	NA	NA
Backfill-01	10/02/19	--	<0.050	<0.050	<0.050	<0.050	<0.200	<5.00	<50.0	NA	NA	NA
MW-09 @ 7.5-10' (40.348778 / -104.597305)	12/10/19	7.5-10	<b>83.3</b>	<b>561</b>	39.5	<b>662</b>	2.58	<b>4910</b>	<b>2540</b>	NA	NA	NA
MW-10 @ 5-7.5' (40.348798 / -104.597165)	12/10/19	5-7.5	<0.050	<0.050	<0.050	<0.050	<0.200	<5.00	<50.0	NA	NA	NA
MW-11 @ 7.5-10' (40.348825 / -104.597013)	12/10/19	7.5-10	0.051	0.066	<0.050	<0.050	<0.200	<5.00	<50.0	NA	NA	NA
MW-12 @ 5-7.5' (40.348870 / -104.597271)	01/03/20	5-7.5	<0.050	<0.050	<0.050	<0.050	<0.200	<5.00	<50.0	NA	NA	NA

**TABLE 1**  
**SOIL ANALYTICAL RESULTS SUMMARY**  
**GEMINI B #31-11, 12, 13, 14, 25**  
**FLOW LINE RELEASE**  
**40.348611 / -104.597026**  
**SE¼ SW¼ SEC.31 T5N R64W 6PM**  
**WELD COUNTY, COLORADO**  
**REMEDATION # 12355**

Sample Location (Latitude/Longitude)	Date	Approximate Depth (feet)	Benzene (mg/kg)	Toluene (mg/kg)	Ethylbenzene (mg/kg)	Total Xylenes (mg/kg)	Naphthalene (mg/kg)	TPH-GRO (mg/kg)	TPH-DRO (mg/kg)	Specific Conductance (mmhos/cm)	pH (pH units)	SAR
<b>COGCC Table 910-1 Regulatory Limits (mg/kg)</b>			<b>0.17</b>	<b>85</b>	<b>100</b>	<b>175</b>	<b>23</b>	<b>500</b>		<b>&lt;4</b>	<b>6 to 9</b>	<b>&lt;12</b>
MW-13 @ 7.5-10' (40.348836 / -104.597419)	01/04/20	7.5-10	<0.050	<0.050	<0.050	<0.050	<0.200	<5.00	<50.0	NA	NA	NA
MW-14 @ 5-7.5' (40.348825 / -104.597013)	01/05/20	5-7.5	<0.050	<0.050	<0.050	<0.050	<0.200	<5.00	<50.0	NA	NA	NA
MW-15 @ 5-7.5' (40.348721 / -104.597432)	01/06/20	5-7.5	<0.050	<0.050	<0.050	<0.050	<0.200	<5.00	<50.0	NA	NA	NA
COGCC = Colorado Oil and Gas Conservation Commission mg/kg = milligrams per kilogram mmhos/cm = millimhos per centimeter NA = Not Analyzed TPH-GRO = Total Petroleum Hydrocarbons - Gasoline Range Organics TPH-DRO = Total Petroleum Hydrocarbons - Diesel Range Organics SAR = Sodium Adsorption Ratio Note: Values presented with a less than symbol (<) did not contain concentrations at or above the laboratory reporting limit. Note: Values presented in <b>BOLD</b> contained concentrations exceeding COGCC Table 910-1 Regulatory Limits												

**TABLE 2**  
**GROUNDWATER ANALYTICAL RESULTS SUMMARY**  
**GEMINI B #31-11, 12, 13, 14, 25**  
**FLOW LINE RELEASE**  
**40.348611 / -104.597026**  
**SE¼ SW¼ SEC.31 T5N R64W 6PM**  
**WELD COUNTY, COLORADO**  
**REMEDATION # 12355**

Sample Location (Latitude/Longitude)	Date	Benzene (µg/L)	Toluene (µg/L)	Ethylbenzene (µg/L)	Total Xylenes (µg/L)
<b>COGCC Table 910-1 Regulatory Limits (µg/L)</b>		<b>5</b>	<b>560</b>	<b>700</b>	<b>1400</b>
MW-01 (40.348598 / -104.596953)	10/19/18	<4.00	<4.00	32.2	563
	01/03/19	1.75	<1.00	<1.00	<1.00
	04/09/19	<1.00	<1.00	<1.00	<1.00
	07/09/19	1.60	<1.00	39.4	373
DES					
MW-01R (40.348598 / -104.596953)	12/17/19	<4.00	<4.00	<4.00	40.4
	01/23/20	<1.00	<1.00	9.77	177
MW-02 (40.348562 / -104.597124)	10/19/18	<1.00	<1.00	<1.00	<1.00
	01/03/19	<1.00	<1.00	<1.00	<1.00
	04/09/19	<1.00	<1.00	<1.00	<1.00
	07/09/19	<1.00	<1.00	<1.00	<1.00
DES					
MW-02R (40.348562 / -104.597124)	12/17/19	<1.00	<1.00	<1.00	<1.00
	01/23/20	<4.00	<4.00	<4.00	<4.00
MW-03 (40.348624 / -104.597153)	10/19/18	<b>11100</b>	<b>8470</b>	<1.00	<b>7610</b>
	01/03/19	<b>8880</b>	<b>668</b>	70.2	<b>1930</b>
	04/09/19	<b>577</b>	<100	<100	<100
	07/09/19	<b>14300</b>	<b>2860</b>	396	<b>5460</b>
DES					
MW-03R (40.348624 / -104.597153)	12/17/19	<1.00	<1.00	1.22	<1.00
	01/23/20	<1.00	<1.00	1.11	<1.00
MW-04 (40.348710 / -104.597192)	10/19/18	<b>3290</b>	<b>6640</b>	<1.00	<b>5360</b>
	01/03/19	<b>3250</b>	<b>2540</b>	178	<b>3930</b>
	04/09/19	<b>1530</b>	508	<50.0	512
	07/09/19	<b>225</b>	26.7	6.56	66.4
DES					
MW-04R (40.348710 / -104.597192)	12/17/19	<b>3160</b>	<b>7110</b>	201	<b>3390</b>
	01/23/20	<b>3240</b>	<b>5240</b>	136	<b>3030</b>
MW-05 (40.348709 / -104.597051)	10/19/18	1.50	5.48	1.80	15.0
	01/03/19	<b>11.2</b>	<1.00	17.8	73.6
	04/09/19	1.62	<1.00	1.50	7.61
	07/09/19	<b>8.36</b>	<1.00	6.60	22.5
DES					

**TABLE 2**  
**GROUNDWATER ANALYTICAL RESULTS SUMMARY**  
**GEMINI B #31-11, 12, 13, 14, 25**  
**FLOW LINE RELEASE**  
**40.348611 / -104.597026**  
**SE¼ SW¼ SEC.31 T5N R64W 6PM**  
**WELD COUNTY, COLORADO**  
**REMEDATION # 12355**

Sample Location (Latitude/Longitude)	Date	Benzene (µg/L)	Toluene (µg/L)	Ethylbenzene (µg/L)	Total Xylenes (µg/L)
<b>COGCC Table 910-1 Regulatory Limits (µg/L)</b>		<b>5</b>	<b>560</b>	<b>700</b>	<b>1400</b>
MW-05R (40.348709 / -104.597051)	12/17/19	<b>678</b>	21.6	63.2	745
	01/23/20	<b>1170</b>	5.64	109	840
MW-06 (40.348710 / -104.596927)	10/19/18	<b>5.26</b>	<1.00	<1.00	4.53
	01/03/19	<1.00	<1.00	<1.00	<1.00
	04/09/19	DES			
	07/09/19	DES			
MW-06R (40.348710 / -104.596927)	12/17/19	<4.00	<4.00	<4.00	<4.00
	01/23/20	<1.00	<1.00	<1.00	<1.00
MW-07 (40.348557 / -104.597285)	01/03/19	<1.00	<1.00	<1.00	<1.00
	04/09/19	<1.00	<1.00	<1.00	<1.00
	07/09/19	<1.00	<1.00	<1.00	<1.00
	12/17/19	<1.00	<1.00	<1.00	<1.00
	01/23/20	<1.00	<1.00	<1.00	<1.00
MW-08 (40.348649 / -104.597266)	01/03/19	<b>720</b>	<b>891</b>	45.6	648
	04/09/19	<b>23.1</b>	20.5	<10.0	<10.0
	07/09/19	<b>783</b>	542	14.9	202
	12/17/19	<b>573</b>	75.6	28.2	149
	01/23/20	<b>6.91</b>	<1.00	1.29	5.72
MW-09 (40.348778 / -104.597305)	12/17/19	<b>1470</b>	<b>4060</b>	104	<b>1930</b>
	01/23/20	<b>1680</b>	<b>3280</b>	68.6	<b>2440</b>
MW-10 (40.348798 / -104.597165)	12/17/19	<1.00	<1.00	<1.00	<1.00
	01/23/20	<1.00	<1.00	<1.00	<1.00
MW-11 (40.348825 / -104.597013)	12/17/19	<1.00	<1.00	<1.00	<1.00
	01/23/20	<1.00	<1.00	<1.00	<1.00
MW-12 (40.348870 / -104.597271)	01/23/20	<1.00	<1.00	<1.00	<1.00
MW-13 (40.348836 / -104.597419)	01/23/20	<1.00	<1.00	<1.00	<1.00



**TABLE 2**  
**GROUNDWATER ANALYTICAL RESULTS SUMMARY**  
**GEMINI B #31-11, 12, 13, 14, 25**  
**FLOW LINE RELEASE**  
**40.348611 / -104.597026**  
**SE¼ SW¼ SEC.31 T5N R64W 6PM**  
**WELD COUNTY, COLORADO**  
**REMEDIAION # 12355**

Sample Location (Latitude/Longitude)	Date	Benzene (µg/L)	Toluene (µg/L)	Ethylbenzene (µg/L)	Total Xylenes (µg/L)
<b>COGCC Table 910-1 Regulatory Limits (µg/L)</b>		<b>5</b>	<b>560</b>	<b>700</b>	<b>1400</b>
MW-14 (40.348825 / -104.597013)	01/23/20	<1.00	<1.00	<1.00	<1.00
MW-15 (40.348721 / -104.597432)	01/23/20	<1.00	<1.00	<1.00	<1.00
COGCC = Colorado Oil and Gas Conservation Commission µg/L - micrograms per liter                      DES - destroyed  Note: Values presented with a less than symbol (<) indicate concentrations were not observed at or above the laboratory reporting limit. Values presented in <b>bold</b> typeface exceed their respective COGCC - Regulatory Limits (Table 910-1).					



**TABLE 3  
GROUNDWATER ELEVATION SUMMARY  
GEMINI B #31-11, 12, 13, 14, 25  
FLOW LINE RELEASE  
40.348611 / -104.597026  
SE¼ SW¼ SEC.31 T5N R64W 6PM  
WELD COUNTY, COLORADO  
REMEDIAION # 12355**

Sample Location (Latitude/Longitude)	Date	Top of Casing Elevation (feet)	Depth to Groundwater from TOC (feet)	Relative Groundwater Elevation (feet) (TOC)	Stickup Height (feet)	Depth to Groundwater (feet) (BGS)
MW-01 (40.348598/-104.596953)	10/19/18	99.54	14.35	85.19	2.87	11.48
	01/03/19		15.56	83.98		12.69
	04/09/19		16.02	83.52		13.15
	07/09/19		12.99	86.55		10.12
DES						
MW-01R (40.348598/-104.596953)	12/17/19	99.86	14.19	85.67	2.80	11.39
	01/23/20		15.02	84.84		12.22
MW-02 (40.348562/-104.597124)	10/19/18	100.00	13.55	86.45	3.23	10.32
	12/17/19		14.97	85.03		11.74
	04/09/19		15.21	84.79		11.98
	07/08/19	99.30	10.19	89.11	2.10	8.09
DES						
MW-02R (40.348562/-104.597124)	12/17/19	100.26	12.23	88.03	2.77	9.46
	01/23/20		14.56	85.70		11.79
MW-03 (40.348624/-104.597153)	10/19/18	99.67	13.65	86.02	3.01	10.64
	01/03/19		14.59	85.08		11.58
	04/09/19		15.23	84.44		12.22
	07/09/19		11.45	88.22		8.44
DES						
MW-03R (40.348624/-104.597153)	12/17/19	99.15	12.86	86.3	2.76	10.10
	01/23/20		13.35	85.80		10.59
MW-04 (40.348710/-104.597192)	10/19/18	97.86	12.75	85.11	3.07	9.68
	01/03/19		13.60	84.26		10.53
	04/09/19		12.33	85.53		9.26
	07/09/19	95.82	9.68	86.14	1.00	8.68
DES						
MW-04R (40.348710/-104.597192)	12/17/19	98.10	14.06	84.04	2.94	11.12
	01/23/20		14.27	83.83		11.33
MW-05 (40.348709/-104.597051)	10/19/18	98.53	16.00	82.53	2.66	13.34
	01/03/19		15.61	82.92		12.95
	04/09/19		16.14	82.39		13.48
	07/09/19		14.47	84.06		11.81
DES						
MW-05R (40.348709/-104.597051)	12/17/19	98.88	14.84	84.04	2.84	12.00
	01/23/20		15.12	83.76		12.28
MW-06 (40.348710/-104.596927)	10/19/18	98.89	15.15	83.74	2.53	12.62
	01/03/19		15.72	83.17		13.19
	04/09/19		DES			
MW-06R (40.348710/-104.596927)	12/17/19	99.00	17.04	81.96	2.69	14.35
	01/23/20		16.01	82.99		13.32



**TABLE 3  
GROUNDWATER ELEVATION SUMMARY  
GEMINI B #31-11, 12, 13, 14, 25  
FLOW LINE RELEASE  
40.348611 / -104.597026  
SE¼ SW¼ SEC.31 T5N R64W 6PM  
WELD COUNTY, COLORADO  
REMEDIAATION # 12355**

Sample Location (Latitude/Longitude)	Date	Top of Casing Elevation (feet)	Depth to Groundwater from TOC (feet)	Relative Groundwater Elevation (feet) (TOC)	Stickup Height (feet)	Depth to Groundwater (feet) (BGS)
MW-07 (40.348557/-104.597285)	01/03/19	100.92	14.28	86.64	2.68	11.60
	04/09/19		14.43	86.49		11.75
	07/09/19		10.19	90.73		7.51
	12/17/19		11.86	89.06		9.18
	01/23/20		12.76	88.16		10.08
MW-08 (40.348649/-104.597266)	01/03/19	97.46	11.86	85.60	2.55	9.31
	04/09/19		12.49	84.97		9.94
	07/09/19		9.18	88.28		6.63
	12/17/19	97.46	10.23	87.23		7.68
	01/23/20		12.84	84.62		10.29
MW-09 (40.348778 / -104.597305)	12/17/19	97.27	12.35	84.92	2.76	9.59
	01/23/20		12.48	84.79		9.72
MW-10 (40.348798 / -104.597165)	12/17/19	97.92	14.52	83.40	2.89	11.63
	01/23/20		14.67	83.25		11.78
MW-11 (40.348825 / -104.597013)	12/17/19	98.35	15.60	82.75	3.02	12.58
	01/23/20		14.80	83.55		11.78
MW-12 (40.348870 / -104.597271)	01/23/20	97.04	12.35	84.69	2.92	9.43
			14.14	82.90		11.22
MW-13 (40.348836 / -104.597419)	01/23/20	97.37	14.52	82.85	3.03	11.49
			12.79	84.58		9.76
MW-14 (40.348825 / -104.597013)	01/23/20	98.34	15.60	82.74	2.96	12.64
			12.74	85.60		9.78
MW-15 (40.348721 / -104.597432)	01/23/20	98.90	14.52	84.38	3.06	11.46
			10.79	88.11		7.73

NOTES:  
 TOC - top of casing  
 BGS - below ground surface  
 DES - destroyed





## **ATTACHMENT A**

### **Boring Logs/Well Completion Diagram (Replacement wells MW-01R through MW-06R, and new wells MW-09 through MW-15)**

# Boring Log/Well Completion Diagram: MW-01R

DEPTH (FT)	LITHOLOGY	SAMPLE				OVM/OVA (PPM)	BLOW COUNT (per 0.5 FT)	DEPTH (FT)	WELL CONSTRUCTION DETAIL	COMMENTS
	DESCRIPTION	GRAPHIC LOG	TYPE	NUMBER	RECOVERY %					
0	(0-8') sandy SILT - brown, dry to moist, soft to medium stiff, low plasticity, moderately graded w/ 30% fine to coarse sand	ML	DP	1	90	7.8	N/A			
5	@ 6-14' - HC/O, gray and black staining					4.3				
10	(8-17') silty CLAY - brown/gray, moist to wet, medium stiff to stiff, moderate plasticity, poorly graded with ~20% silt, trace sand	CL	DP	2	100	1.9	N/A			
15	@ 14' - N/O, N/S					1154				
20	BoB @ 17'					567.7	N/A		Wet @ 11'	
25						10.3				
30			DP	4	100	0.7	N/A			

DP - Direct push  
 HC - Hydrocarbon  
 BoB - Bottom of Boring  
 N/O - no odor  
 N/S - no staining  
 TOC - top of casing  
 bgs - below ground surface

START/COMPLETION DATE: 12/10/19	SAND PACK INTERVAL (FEET): 4-17
PROJECT: GEMINI B #31-11,12,13,14,25	BENTONITE/GROUT INTERVAL (FEET): 0-4
LOGGED BY: K. PETERSON	WELL SCREEN INTERVAL (FEET): 7-17
DRILLING COMPANY/EQUIPMENT: EAGLE/GEOPROBE	WELL DIAMETER (INCHES): 1
BORING DEPTH (FEET): 17	WELL DEPTH (FEET): 17
PID INSTRUMENT: MiniRAE 3000 - PID #10	
TIME STARTED/COMPLETED: 1300/1325	
SAMPLE COLLECTION DEPTH (FEET)/TIME: NA	



**EAGLE**  
 ENVIRONMENTAL  
 CONSULTING, INC.  
 8000 W 44th Ave, Wheat Ridge, CO 80033  
 Ph: 303-433-0479 • F: 303-325-5449

# Boring Log/Well Completion Diagram: MW-02R

DEPTH (FT)	LITHOLOGY	SAMPLE				OVM/OVA (PPM)	BLOW COUNT (per 0.5 FT)	DEPTH (FT)	WELL CONSTRUCTION DETAIL	COMMENTS
	DESCRIPTION	GRAPHIC LOG	TYPE	NUMBER	RECOVERY %					
0	(0-8') sandy SILT - brown, dry to moist, soft to medium stiff, low plasticity, moderately graded w/ 30% fine to coarse sand, N/O, N/S	ML	DP	1	100	0.0	N/A			
5						1.3				
8	(8-17') silty CLAY - brown/gray, moist to wet, medium stiff to stiff, moderate plasticity, poorly graded with 20% silt, trace sand, N/O, N/S	CL	DP	2	90	0.1	N/A		Wet @ ~11'	
10						10.5				
13						20.9				
15						10.3				
17	BoB @ 17'					3.2	N/A			

DP - Direct push  
 HC - Hydrocarbon  
 BoB - Bottom of Boring  
 N/O - no odor  
 N/S - no staining  
 TOC - top of casing  
 bgs - below ground surface

START/COMPLETION DATE: 12/10/19	SAND PACK INTERVAL (FEET): 4-17
PROJECT: GEMINI B #31-11,12,13,14,25	BENTONITE/GROUT INTERVAL (FEET): 0-4
LOGGED BY: K. PETERSON	WELL SCREEN INTERVAL (FEET): 7-17
DRILLING COMPANY/EQUIPMENT: EAGLE/GEOPROBE	WELL DIAMETER (INCHES): 1
BORING DEPTH (FEET): 17	WELL DEPTH (FEET): 17
PID INSTRUMENT: MiniRAE 3000 - PID #10	<p><b>EAGLE ENVIRONMENTAL CONSULTING, INC.</b>              8000 W 44th Ave, Wheat Ridge, CO 80033              Ph: 303-433-0479 • F: 303-325-5449</p>
TIME STARTED/COMPLETED: 1350/1421	
SAMPLE COLLECTION DEPTH (FEET)/TIME: NA	

# Boring Log/Well Completion Diagram: MW-03R

DEPTH (FT)	LITHOLOGY	SAMPLE				OVM/OVA (PPM)	BLOW COUNT (per 0.5 FT)	DEPTH (FT)	WELL CONSTRUCTION DETAIL	COMMENTS
	DESCRIPTION	GRAPHIC LOG	TYPE	NUMBER	RECOVERY %					
0	(0-14') Backfill	FL	DP	1	80	0.0	N/A		Wet @ ~11'	
5	0.0									
10	DP		2	80	0.0	N/A				
15					0.0					
15	(14-17') silty CLAY - brown/gray, moist to wet, stiff, moderate plasticity, poorly graded with ~20% silt, trace sand, N/O, N/S	CL	DP	3	90	0.8	N/A			
20	53.7									
17	BoB @ 17'	DP	4	100	3.5	N/A				

DP - Direct push  
 HC - Hydrocarbon  
 BoB - Bottom of Boring  
 N/O - no odor  
 N/S - no staining  
 TOC - top of casing  
 bgs - below ground surface

START/COMPLETION DATE: 12/10/19	SAND PACK INTERVAL (FEET): 4-17
PROJECT: GEMINI B #31-11,12,13,14,25	BENTONITE/GROUT INTERVAL (FEET): 0-4
LOGGED BY: K. PETERSON	WELL SCREEN INTERVAL (FEET): 7-17
DRILLING COMPANY/EQUIPMENT: EAGLE/GEOPROBE	WELL DIAMETER (INCHES): 1
BORING DEPTH (FEET): 17	WELL DEPTH (FEET): 17
PID INSTRUMENT: MiniRAE 3000 - PID #10	
TIME STARTED/COMPLETED: 1328/1344	
SAMPLE COLLECTION DEPTH (FEET)/TIME: NA	



# Boring Log/Well Completion Diagram: MW-04R

DEPTH (FT)	LITHOLOGY	SAMPLE				OVM/OVA (PPM)	BLOW COUNT (per 0.5 FT)	DEPTH (FT)	WELL CONSTRUCTION DETAIL	COMMENTS
	DESCRIPTION	GRAPHIC LOG	TYPE	NUMBER	RECOVERY %					
0	(0-8') Backfill - benched portion of excavation	FL	DP	1	80	0.0	N/A			
5						0.0				
8	(8-17') silty CLAY - brown/gray, wet, medium stiff, moderate plasticity, poorly graded with 20% silt, trace sand	CL	DP	2	100	0.0	N/A		Wet @ ~11'	
10	@9-15.5' - HC/O, gray staining					1050				
15	@15.5' - N/O, N/S					1140				
17	BoB @ 17'					452.7				
15		DP	4	100	78.4	N/A				
16.3					16.3					

DP - Direct push  
 HC - Hydrocarbon  
 BoB - Bottom of Boring  
 N/O - no odor  
 N/S - no staining  
 TOC - top of casing  
 bgs - below ground surface

START/COMPLETION DATE: 12/10/19	SAND PACK INTERVAL (FEET): 4-17
PROJECT: GEMINI B #31-11,12,13,14,25	BENTONITE/GROUT INTERVAL (FEET): 0-4
LOGGED BY: K. PETERSON	WELL SCREEN INTERVAL (FEET): 7-17
DRILLING COMPANY/EQUIPMENT: EAGLE/GEOPROBE	WELL DIAMETER (INCHES): 1
BORING DEPTH (FEET): 17	WELL DEPTH (FEET): 17
PID INSTRUMENT: MiniRAE 3000 - PID #10	
TIME STARTED/COMPLETED: 1131/1201	
SAMPLE COLLECTION DEPTH (FEET)/TIME: NA	



# Boring Log/Well Completion Diagram: MW-05R

DEPTH (FT)	LITHOLOGY	SAMPLE				OVM/OVA (PPM)	BLOW COUNT (per 0.5 FT)	DEPTH (FT)	WELL CONSTRUCTION DETAIL	COMMENTS	
	DESCRIPTION	GRAPHIC LOG	TYPE	NUMBER	RECOVERY %						
0	(0-14') Backfill	FL	DP	1	75	14.8	N/A		Wet @ ~11'		
5	8.1										
10	6.7										
15	1.1										
15	(14-17') silty CLAY - brown/gray, wet, stiff, moderate plasticity, poorly graded with ~20% silt, trace sands @13-15' - slight HC/O @15' - N/O, N/S	CL	DP	3	85	10.9	N/A				
20	243.1										
20	BoB @ 17'										
25											
30											

DP - Direct push  
 HC - Hydrocarbon  
 BoB - Bottom of Boring  
 N/O - no odor  
 N/S - no staining  
 TOC - top of casing  
 bgs - below ground surface

START/COMPLETION DATE: 12/10/19	SAND PACK INTERVAL (FEET): 4-17
PROJECT: GEMINI B #31-11,12,13,14,25	BENTONITE/GROUT INTERVAL (FEET): 0-4
LOGGED BY: K. PETERSON	WELL SCREEN INTERVAL (FEET): 7-17
DRILLING COMPANY/EQUIPMENT: EAGLE/GEOPROBE	WELL DIAMETER (INCHES): 1
BORING DEPTH (FEET): 17	WELL DEPTH (FEET): 17
PID INSTRUMENT: MiniRAE 3000 - PID #10	
TIME STARTED/COMPLETED: 1205/1228	
SAMPLE COLLECTION DEPTH (FEET)/TIME: NA	



**EAGLE**  
 ENVIRONMENTAL  
 CONSULTING, INC.  
 8000 W 44th Ave, Wheat Ridge, CO 80033  
 Ph: 303-433-0479 • F: 303-325-5449

# Boring Log/Well Completion Diagram: MW-06R

DEPTH (FT)	LITHOLOGY	SAMPLE				OVM/OVA (PPM)	BLOW COUNT (per 0.5 FT)	DEPTH (FT)	WELL CONSTRUCTION DETAIL	COMMENTS
	DESCRIPTION	GRAPHIC LOG	TYPE	NUMBER	RECOVERY %					
0	(0-9) sandy SILT - brown, dry to moderately moist, medium stiff, low plasticity, moderately graded with ~25% fine sand, N/O, N/S	ML	DP	1	90	0.0	N/A			
5						0.0				
9	(9-17') silty CLAY - brown/gray, moist to wet, medium stiff, poorly graded with 20% silt, trace fine sands	CL	DP	2	90	0.6	N/A			
10						0.0				
13	@13-14.5' - HC/O, gray staining	CL	DP	3	100	0.0	N/A		Wet @ ~11'	
14	@14.5' - N/O, N/S					594.3				
15		DP	4	100	12.3	N/A				
17	BoB @ 17'									

DP - Direct push  
 HC - Hydrocarbon  
 BoB - Bottom of Boring  
 N/O - no odor  
 N/S - no staining  
 TOC - top of casing  
 bgs - below ground surface

START/COMPLETION DATE: 12/10/19	SAND PACK INTERVAL (FEET): 4-17
PROJECT: GEMINI B #31-11,12,13,14,25	BENTONITE/GROUT INTERVAL (FEET): 0-4
LOGGED BY: K. Peterson	WELL SCREEN INTERVAL (FEET): 7-17
DRILLING COMPANY/EQUIPMENT: EAGLE/GEOPROBE	WELL DIAMETER (INCHES): 1
BORING DEPTH (FEET): 17	WELL DEPTH (FEET): 17
PID INSTRUMENT: MiniRAE 3000 - PID #10	<p><b>EAGLE</b>                  ENVIRONMENTAL                  CONSULTING, INC.                  8000 W 44th Ave, Wheat Ridge, CO 80033                  Ph: 303-433-0479 • F: 303-325-5449</p>
TIME STARTED/COMPLETED: 1230/1255	
SAMPLE COLLECTION DEPTH (FEET)/TIME: NA	

# Boring Log/Well Completion Diagram: MW-09

DEPTH (FT)	LITHOLOGY	SAMPLE				OVM/OVA (PPM)	BLOW COUNT (per 0.5 FT)	DEPTH (FT)	WELL CONSTRUCTION DETAIL	COMMENTS
	DESCRIPTION	GRAPHIC LOG	TYPE	NUMBER	RECOVERY %					
0	(0-7) sandy SILT - brown, dry to moderately moist, medium stiff, low plasticity, poorly graded w/ 25% fine sand, N/O, N/S	ML	DP	1	90	0.0	N/A		Wet @ ~11'	
5						0.0				
7	(7-17') silty CLAY - brown/gray, moist to wet, medium stiff, poorly graded w/ 20% silt, trace fine sands	CL	DP	2	100	0.0	N/A		Wet @ ~11'	
10	@9-13' - HC/O, black and gray staining					487.1				
13	@13' - N/O, N/S	CL	DP	3	100	417.6	N/A		Wet @ ~11'	
15						50.2				
17	BoB @ 17'	CL	DP	4	100	1.9	N/A		Wet @ ~11'	
20										
25									DP - Direct push HC - Hydrocarbon BoB - Bottom of Boring N/O - no odor N/S - no staining TOC - top of casing bgs - below ground surface	
30										

START/COMPLETION DATE: 12/10/19	SAND PACK INTERVAL (FEET): 4-17
PROJECT: GEMINI B #31-11,12,13,14,25	BENTONITE/GROUT INTERVAL (FEET): 0-4
LOGGED BY: K. PETERSON	WELL SCREEN INTERVAL (FEET): 7-17
DRILLING COMPANY/EQUIPMENT: EAGLE/GEOPROBE	WELL DIAMETER (INCHES): 1
BORING DEPTH (FEET): 17	WELL DEPTH (FEET): 17
PID INSTRUMENT: MiniRAE 3000 - PID #10	
TIME STARTED/COMPLETED: 1051/1125	
SAMPLE COLLECTION DEPTH (FT)/TIME: 7.5-10/1115	



**EAGLE**  
 ENVIRONMENTAL  
 CONSULTING, INC.  
 8000 W 44th Ave, Wheat Ridge, CO 80033  
 Ph: 303-433-0479 • F: 303-325-5449

# Boring Log/Well Completion Diagram: MW-10

DEPTH (FT)	LITHOLOGY	SAMPLE				OVM/OVA (PPM)	BLOW COUNT (per 0.5 FT)	DEPTH (FT)	WELL CONSTRUCTION DETAIL	COMMENTS
	DESCRIPTION	GRAPHIC LOG	TYPE	NUMBER	RECOVERY %					
0	(0-13') Backfill	FL	DP	1	90	0.0	N/A		Wet @ ~12'	
5	1.5									
10	3.4		DP	2	100	1.9	N/A			
15	9.3									
15	(13-17') silty CLAY - brown/gray, wet, medium stiff, poorly graded with 20% silt, trace fine sands, N/O, N/S	CL	DP	3	100	1.5	N/A			
17	0.0					4		100	0.0	N/A
17	BoB @ 17'									

DP - Direct push  
 HC - Hydrocarbon  
 BoB - Bottom of Boring  
 N/O - no odor  
 N/S - no staining  
 TOC - top of casing  
 bgs - below ground surface

START/COMPLETION DATE: 12/10/19	SAND PACK INTERVAL (FEET): 4-17
PROJECT: GEMINI B #31-11,12,13,14,25	BENTONITE/GROUT INTERVAL (FEET): 0-4
LOGGED BY: K. PETERSON	WELL SCREEN INTERVAL (FEET): 7-17
DRILLING COMPANY/EQUIPMENT: EAGLE/GEOPROBE	WELL DIAMETER (INCHES): 1
BORING DEPTH (FEET): 17	WELL DEPTH (FEET): 17
PID INSTRUMENT: MiniRAE 3000 - PID #10	
TIME STARTED/COMPLETED: 1005/1048	
SAMPLE COLLECTION DEPTH (FT)/TIME: 5-7.5/1024 15-17/1045	



# Boring Log/Well Completion Diagram: MW-11

DEPTH (FT)	LITHOLOGY	SAMPLE				OVM/OVA (PPM)	BLOW COUNT (per 0.5 FT)	DEPTH (FT)	WELL CONSTRUCTION DETAIL	COMMENTS
	DESCRIPTION	GRAPHIC LOG	TYPE	NUMBER	RECOVERY %					
0	(0-14') Backfill	FL	DP	1	90	0.0	N/A		Wet @ ~12'	
5						0.0				
10			DP	2	100	0.0	N/A			
15						0.0				
17	(14-17') silty SAND - brown, wet, loose, fine to medium grained, well graded with 30% silt, N/O, N/S	SM	DP	3	100	0.0	N/A			
20						0.0				
21	BoB @ 17'		DP	4	100	0.0	N/A			

DP - Direct push  
 HC - Hydrocarbon  
 BoB - Bottom of Boring  
 N/O - no odor  
 N/S - no staining  
 TOC - top of casing  
 bgs - below ground surface

START/COMPLETION DATE: 12/10/19	SAND PACK INTERVAL (FEET): 4-17
PROJECT: GEMINI B #31-11,12,13,14,25	BENTONITE/GROUT INTERVAL (FEET): 0-4
LOGGED BY: K. PETERSON	WELL SCREEN INTERVAL (FEET): 7-17
DRILLING COMPANY/EQUIPMENT: EAGLE/GEOPROBE	WELL DIAMETER (INCHES): 1
BORING DEPTH (FEET): 17	WELL DEPTH (FEET): 17
PID INSTRUMENT: MiniRAE 3000 - PID #10	
TIME STARTED/COMPLETED: 0917/1002	
SAMPLE COLLECTION DEPTH (FT)/TIME: 7.5-10/0931 15-17/0940	



**EAGLE**  
 ENVIRONMENTAL  
 CONSULTING, INC.  
 8000 W 44th Ave, Wheat Ridge, CO 80033  
 Ph: 303-433-0479 • F: 303-325-5449

# Boring Log/Well Completion Diagram: MW-12

DEPTH (FT)	LITHOLOGY	SAMPLE				OVM/OVA (PPM)	BLOW COUNT (per 0.5 FT)	DEPTH (FT)	WELL CONSTRUCTION DETAIL	COMMENTS
	DESCRIPTION	GRAPHIC LOG	TYPE	NUMBER	RECOVERY %					
0	(0-6.5') sandy SILT - light brown, dry, medium stiff, low plasticity, poorly graded with 20% fine grained sand, N/O, N/S	ML	DP	1	40	17.4	N/A			
						14.2				
5	(6.5-17') sandy CLAY - light brown, moderately moist to wet, very stiff, high plasticity, moderately graded with ~20% fine grained sand, trace silt	CL	DP	2	100	18.3	N/A			
						12.5				
10	@9-10' - slight staining, N/O	CL	DP	3	100	4.4	N/A		wet @ 10'	
	@10' - N/O, N/S					16.4				
15		CL	DP	4	50	8.2	N/A			
	BoB @ 17'									

DP - Direct push  
 HC - Hydrocarbon  
 BoB - Bottom of Boring  
 N/O - no odor  
 N/S - no staining  
 TOC - top of casing  
 bgs - below ground surface

START/COMPLETION DATE: 01/03/20	SAND PACK INTERVAL (FEET): 3-17
PROJECT: GEMINI B #31-11,12,13,14,25	BENTONITE/GROUT INTERVAL (FEET): 0-3
LOGGED BY: W. KLEINHEKSEL	WELL SCREEN INTERVAL (FEET): 5-17
DRILLING COMPANY/EQUIPMENT: EAGLE/GEOPROBE	WELL DIAMETER (INCHES): 1
BORING DEPTH (FEET): 17	WELL DEPTH (FEET): 17
PID INSTRUMENT: MiniRAE 3000 - PID #3	
TIME STARTED/COMPLETED: 0956/1025	
SAMPLE COLLECTION DEPTH (FT)/TIME: 5-7.5'/1024	



**EAGLE**  
 ENVIRONMENTAL  
 CONSULTING, INC.

8000 W 44th Ave, Wheat Ridge, CO 80033  
 Ph: 303-433-0479 • F: 303-325-5449

# Boring Log/Well Completion Diagram: MW-13

DEPTH (FT)	LITHOLOGY	SAMPLE				OVM/OVA (PPM)	BLOW COUNT (per 0.5 FT)	DEPTH (FT)	WELL CONSTRUCTION DETAIL	COMMENTS
	DESCRIPTION	GRAPHIC LOG	TYPE	NUMBER	RECOVERY %					
0	(0-7') sandy SILT - brown, moderately moist, medium stiff, low plasticity, poorly graded with 20% fine grained sand, N/O, N/S	ML	DP	1	80	15.4	N/A			
						9.7				
5	(7-17') silty CLAY - gray, moderately moist to wet, medium stiff, low to medium plasticity, poorly graded with ~40% silt	CL	DP	2	100	15.2	N/A			
						26.1				
10	@9.5' - slight staining, N/O @10' - N/O, N/S	CL	DP	3	100	17.2	N/A		wet @ 10'	
						17.5				
15		CL	DP	4	80	7.7	N/A			
	BoB @ 17'									

DP - Direct push  
 HC - Hydrocarbon  
 BoB - Bottom of Boring  
 N/O - no odor  
 N/S - no staining  
 TOC - top of casing  
 bgs - below ground surface

START/COMPLETION DATE: 01/03/20		SAND PACK INTERVAL (FEET): 3-17	
PROJECT: GEMINI B #31-11,12,13,14,25		BENTONITE/GROUT INTERVAL (FEET): 0-3	
LOGGED BY: W. KLEINHEKSEL		WELL SCREEN INTERVAL (FEET): 5-17	
DRILLING COMPANY/EQUIPMENT: EAGLE/GEOPROBE		WELL DIAMETER (INCHES): 1	
BORING DEPTH (FEET): 17	WELL DEPTH (FEET): 17	<p><b>EAGLE</b>                  ENVIRONMENTAL                  CONSULTING, INC.                  8000 W 44th Ave, Wheat Ridge, CO 80033                  Ph: 303-433-0479 • F: 303-325-5449</p>	
PID INSTRUMENT: MiniRAE 3000 - PID #3			
TIME STARTED/COMPLETED: 1036/1100			
SAMPLE COLLECTION DEPTH (FT)/TIME: 7.5-10'/1056			

# Boring Log/Well Completion Diagram: MW-14

DEPTH (FT)	LITHOLOGY	SAMPLE				OVM/OVA (PPM)	BLOW COUNT (per 0.5 FT)	DEPTH (FT)	WELL CONSTRUCTION DETAIL	COMMENTS
	DESCRIPTION	GRAPHIC LOG	TYPE	NUMBER	RECOVERY %					
0	(0-17') silty CLAY - light brown to brown, dry to wet, medium stiff to very stiff, medium plasticity, poorly graded with ~20-40% silt, N/O, N/S	CL	DP	1	40	15.8	N/A		wet @ 9.5'	
5				2	100	16.9				
10				3	100	24.2	17.3			
15				4	90	22.8	8.8			11.1
17	BoB @ 17'									

DP - Direct push  
 HC - Hydrocarbon  
 BoB - Bottom of Boring  
 N/O - no odor  
 N/S - no staining  
 TOC - top of casing  
 bgs - below ground surface

START/COMPLETION DATE: 01/03/20		SAND PACK INTERVAL (FEET): 3-17	
PROJECT: GEMINI B #31-11,12,13,14,25		BENTONITE/GROUT INTERVAL (FEET): 0-3	
LOGGED BY: W. KLEINHEKSEL		WELL SCREEN INTERVAL (FEET): 5-17	
DRILLING COMPANY/EQUIPMENT: EAGLE/GEOPROBE		WELL DIAMETER (INCHES): 1	
BORING DEPTH (FEET): 17	WELL DEPTH (FEET): 17	<p><b>EAGLE ENVIRONMENTAL CONSULTING, INC.</b>                  8000 W 44th Ave, Wheat Ridge, CO 80033                  Ph: 303-433-0479 • F: 303-325-5449</p>	
PID INSTRUMENT: MiniRAE 3000 - PID #3			
TIME STARTED/COMPLETED: 1124/1200			
SAMPLE COLLECTION DEPTH (FT)/TIME: 5-7.5'/1154			

# Boring Log/Well Completion Diagram: MW-15

DEPTH (FT)	LITHOLOGY	SAMPLE				OVW/OVA (PPM)	BLOW COUNT (per 0.5 FT)	DEPTH (FT)	WELL CONSTRUCTION DETAIL	COMMENTS
	DESCRIPTION	GRAPHIC LOG	TYPE	NUMBER	RECOVERY %					
0	(0-17') silty CLAY - light brown, moderately moist to wet, very stiff, medium plasticity, moderately graded with ~15-30% silt, trace fine grained sand, N/O, N/S	CL	DP	1	45	12.1	N/A		wet @ 9.5'	
5						5.3				
10			DP	2	100	18.6	N/A			
10						9.7				
15	DP	3	95	7.3	N/A					
15				9.9						
17	BoB @ 17'									

DP - Direct push  
 HC - Hydrocarbon  
 BoB - Bottom of Boring  
 N/O - no odor  
 N/S - no staining  
 TOC - top of casing  
 bgs - below ground surface

START/COMPLETION DATE: 01/03/20		SAND PACK INTERVAL (FEET): 3-17	
PROJECT: GEMINI B #31-11,12,13,14,25		BENTONITE/GROUT INTERVAL (FEET): 0-3	
LOGGED BY: W. KLEINHEKSEL		WELL SCREEN INTERVAL (FEET): 5-17	
DRILLING COMPANY/EQUIPMENT: EAGLE/GEOPROBE		WELL DIAMETER (INCHES): 1	
BORING DEPTH (FEET): 17	WELL DEPTH (FEET): 17	<p><b>EAGLE</b>                  ENVIRONMENTAL                  CONSULTING, INC.                  8000 W 44th Ave, Wheat Ridge, CO 80033                  Ph: 303-433-0479 • F: 303-325-5449</p>	
PID INSTRUMENT: MiniRAE 3000 - PID #3			
TIME STARTED/COMPLETED: 1206/1225			
SAMPLE COLLECTION DEPTH (FT)/TIME: 5-7.5'/1220			



## **ATTACHMENT B**

### **Laboratory Analytical Reports**



December 16, 2019

Eagle Environmental Consulting, Inc.

Martin C Eckert III

8000 W 44th Ave

Wheat Ridge CO 80033

**Project Name - Noble - Gemini B  
#31-11,12,13,14,25**

**Project Number - [none]**

Attached are your analytical results for Noble - Gemini B #31-11,12,13,14,25 received by Origins Laboratory, Inc. December 10, 2019. This project is associated with Origins project number Y912148-01.

The analytical results in the following report were analyzed under the guidelines of EPA Methods. These methods are identified as follows; "SW" are defined in SW-846, "EPA" are defined in 40CFR part 136 and "SM" are defined in the most current revision of Standard Methods For the Examination of Water and Wastewater.

The analytical results apply specifically to the samples and analyses specified per the attached Chain of Custody. As such, this report shall not be reproduced except in full, without the written approval of Origin's laboratory.

Unless otherwise noted, the analytical results for all soil samples are reported on a wet weight basis. All analytical analyses were performed under NELAP guidelines unless noted by a data qualifier.

Any holding time exceedances, deviations from the method specifications or deviations from Origins Laboratory's Standard Operating Procedures are outlined in the case narrative.

Thank you for selecting Origins for your analytical needs. Please contact us with any questions concerning this report, or if we can help with anything at all.

Origins Laboratory, Inc.  
303.433.1322  
o-squad@oelabinc.com



1725 Elk Place, Denver, CO 80211 | Phone: 303.433.1322 | Fax: 303.265.9645

Eagle Environmental Consulting, Inc.  
8000 W 44th Ave  
Wheat Ridge CO 80033

Martin C Eckert III  
Project Number: [none]  
Project: Noble - Gemini B #31-11,12,13,14,25

CROSS REFERENCE REPORT

Sample ID	Laboratory ID	Matrix	Date Sampled	Date Received
MW-09@7.5-10	Y912148-01	Soil	December 10, 2019 11:15	12/10/2019 15:35
MW-10@5-7.5	Y912148-02	Soil	December 10, 2019 10:24	12/10/2019 15:35
MW-11@7.5-10	Y912148-03	Soil	December 10, 2019 9:31	12/10/2019 15:35

Origins Laboratory, Inc.



*The results in this report apply to the samples analyzed in accordance with the chain of custody document. This analytical report must be reproduced in its entirety.*



Eagle Environmental Consulting, Inc.  
 8000 W 44th Ave  
 Wheat Ridge CO 80033

Martin C Eckert III  
 Project Number: [none]  
 Project: Noble - Gemini B #31-11,12,13,14,25

Origins Laboratory

F-012207-01-R1  
 Effective Date: 01/09/12

**Sample Receipt Checklist**

Origins Work Order: Y912148

Client: Eagle Env. Consulting

Client Project ID: Noble Gemini B #31-11, 12, 13, 14, 25

Checklist Completed by: SBE

Shipped Via: HD

(UPS, FedEx, Hand Delivered, Pick-up, etc.)

Date/time completed: 12-10-19 0612

Airbill #: \_\_\_\_\_

Matrix(s) Received: (Check all that apply):  Soil/Solid  Water \_\_\_\_\_ Other: \_\_\_\_\_ (Describe)

Cooler Number/Temperature: 1, 3.8 °C \_\_\_\_\_ °C \_\_\_\_\_ °C \_\_\_\_\_ °C

Thermometer ID: 7003

Requirement Description	Yes	No	N/A	Comments (if any)
If samples require cooling, was the temperature between 0°C to ≤ 6°C <sup>(1)</sup> ?	X			
Is there ice present (document if blue ice is used)	X			
Are custody seals present on cooler? (if so, document in comments if they are signed and dated, broken or intact)		X		
Are custody seals present on each sample container? (if so, document in comments if they are signed and dated, broken or intact)		X		
Were all samples received intact <sup>(1)</sup> ?	X			
Was adequate sample volume provided <sup>(1)</sup> ?	X			
Are short holding time analytes or samples with HTs due within 48 hours present <sup>(1)</sup> ?		X		
Is a chain-of-custody (COC) present and filled out completely <sup>(1)</sup> ?	X			
Does the COC agree with the number and type of sample bottles received <sup>(1)</sup> ?	X			
Do the sample IDs on the bottle labels match the COC <sup>(1)</sup> ?	X			
Is the COC properly relinquished by the client with date and time recorded <sup>(1)</sup> ?	X			
For volatiles in water – is there headspace (> ¼ inch bubble) present? <b>If yes, contact client and note in narrative.</b>		X	X	soil
Are samples preserved that require preservation and was it checked <sup>(1)</sup> ? (note ID of confirmation instrument used in comments) / (preservation is not confirmed for subcontracted analyses in order to insure sample integrity)/(pH <2 for samples preserved with HNO <sub>3</sub> , HCL, H <sub>2</sub> SO <sub>4</sub> ) / (pH >10 for samples preserved with NaAsO <sub>2</sub> +NaOH, ZnAc+NaOH)			X	
Additional Comments (if any):				

<sup>(1)</sup>If NO, then contact the client before proceeding with analysis and note date/time and person contacted as well as the corrective action to in the additional comments (above) and the case narrative.

OP  
 Reviewed by (Project Manager)

12/12/19  
 Date/Time Reviewed

Origins Laboratory, Inc.



The results in this report apply to the samples analyzed in accordance with the chain of custody document. This analytical report must be reproduced in its entirety.

Eagle Environmental Consulting, Inc.  
 8000 W 44th Ave  
 Wheat Ridge CO 80033

Martin C Eckert III  
 Project Number: [none]  
 Project: Noble - Gemini B #31-11,12,13,14,25

MW-09@7.5-10  
 12/10/2019 11:15:00AM

Analyte	Result	Reporting Limit	Units	Dilution	Batch	Analyst	Prepared	Analyzed	Notes
---------	--------	-----------------	-------	----------	-------	---------	----------	----------	-------

**Origins Laboratory, Inc.**  
 Y912148-01 (Soil)

**Diesel Range Organics (DRO/TEPH) by EPA 8015D**

Diesel (C10-C28)	2540	50.0	mg/kg	1	B9L1005	TEM	12/10/2019	12/11/2019	
Surrogate: o-Terphenyl	139 %	50-150			"	"	"	"	

**GBTEX + Naphthalene by EPA 8260D**

Gasoline Range Hydrocarbons	4910	500	mg/kg	2500	B9L1004	ZZZ	12/10/2019	12/13/2019	
Benzene	83.3	0.498	"	250	"	KDK	"	12/11/2019	
Toluene	561	4.98	"	2500	"	ZZZ	"	12/13/2019	
Ethylbenzene	39.5	0.498	"	250	"	KDK	"	12/11/2019	
Xylenes, total	662	4.98	"	2500	"	ZZZ	"	12/13/2019	
Naphthalene	2.58	2.00	"	250	"	KDK	"	12/11/2019	

Surrogate: 1,2-Dichloroethane-d4	86.0 %	70-130			"	"	"	"	
Surrogate: Toluene-d8	115 %	70-130			"	"	"	"	
Surrogate: 4-Bromofluorobenzene	93.1 %	70-130			"	"	"	"	

Origins Laboratory, Inc.



The results in this report apply to the samples analyzed in accordance with the chain of custody document. This analytical report must be reproduced in its entirety.

Eagle Environmental Consulting, Inc.  
 8000 W 44th Ave  
 Wheat Ridge CO 80033

Martin C Eckert III  
 Project Number: [none]  
 Project: Noble - Gemini B #31-11,12,13,14,25

**MW-10@5-7.5**  
**12/10/2019 10:24:00AM**

Analyte	Result	Reporting Limit	Units	Dilution	Batch	Analyst	Prepared	Analyzed	Notes
---------	--------	-----------------	-------	----------	-------	---------	----------	----------	-------

**Origins Laboratory, Inc.**  
**Y912148-02 (Soil)**

**Diesel Range Organics (DRO/TEPH) by EPA 8015D**

Diesel (C10-C28)	ND	50.0	mg/kg	1	B9L1005	TEM	12/10/2019	12/11/2019	U
<i>Surrogate: o-Terphenyl</i>	71.6 %	50-150			"	"	"	"	

**GBTEX + Naphthalene by EPA 8260D**

Gasoline Range Hydrocarbons	ND	5.00	mg/kg	25	B9L1004	KDK	12/10/2019	12/11/2019	U
Benzene	ND	0.050	"	"	"	KDK	"	"	U
Toluene	ND	0.050	"	"	"	KDK	"	"	U
Ethylbenzene	ND	0.050	"	"	"	KDK	"	"	U
Xylenes, total	ND	0.050	"	"	"	KDK	"	"	U
Naphthalene	ND	0.200	"	"	"	KDK	"	"	U
<i>Surrogate: 1,2-Dichloroethane-d4</i>	86.3 %	70-130			"	"	"	"	
<i>Surrogate: Toluene-d8</i>	96.0 %	70-130			"	"	"	"	
<i>Surrogate: 4-Bromofluorobenzene</i>	93.9 %	70-130			"	"	"	"	

Origins Laboratory, Inc.



*The results in this report apply to the samples analyzed in accordance with the chain of custody document. This analytical report must be reproduced in its entirety.*

Eagle Environmental Consulting, Inc.  
 8000 W 44th Ave  
 Wheat Ridge CO 80033

Martin C Eckert III  
 Project Number: [none]  
 Project: Noble - Gemini B #31-11,12,13,14,25

MW-11@7.5-10  
 12/10/2019 9:31:00AM

Analyte	Result	Reporting Limit	Units	Dilution	Batch	Analyst	Prepared	Analyzed	Notes
---------	--------	-----------------	-------	----------	-------	---------	----------	----------	-------

**Origins Laboratory, Inc.**  
 Y912148-03 (Soil)

**Diesel Range Organics (DRO/TEPH) by EPA 8015D**

Diesel (C10-C28)	ND	50.0	mg/kg	1	B9L1005	TEM	12/10/2019	12/11/2019	U
Surrogate: o-Terphenyl	84.2 %	50-150			"	"	"	"	

**GBTEX + Naphthalene by EPA 8260D**

Gasoline Range Hydrocarbons	ND	5.00	mg/kg	25	B9L1004	KDK	12/10/2019	12/11/2019	U
Benzene	0.051	0.050	"	"	"	KDK	"	"	
Toluene	0.066	0.050	"	"	"	KDK	"	"	
Ethylbenzene	ND	0.050	"	"	"	KDK	"	"	U
Xylenes, total	ND	0.050	"	"	"	KDK	"	"	U
Naphthalene	ND	0.200	"	"	"	KDK	"	"	U

Surrogate: 1,2-Dichloroethane-d4	85.0 %	70-130			"	"	"	"	
Surrogate: Toluene-d8	96.2 %	70-130			"	"	"	"	
Surrogate: 4-Bromofluorobenzene	93.8 %	70-130			"	"	"	"	

Origins Laboratory, Inc.



The results in this report apply to the samples analyzed in accordance with the chain of custody document. This analytical report must be reproduced in its entirety.

Eagle Environmental Consulting, Inc.  
 8000 W 44th Ave  
 Wheat Ridge CO 80033

Martin C Eckert III  
 Project Number: [none]  
 Project: Noble - Gemini B #31-11,12,13,14,25

**Volatile Organic Compounds by GC/MS SW846 8260D - Quality Control**  
**Origins Laboratory, Inc.**

Analyte	Result	Reporting Limit	Units	Spike Level	Source Result	%REC	%REC Limits	RPD	RPD Limit	Notes
<b>Batch B9L1004 - EPA 5030 (soil)</b>										
<b>Blank (B9L1004-BLK1)</b>										
					Prepared: 12/10/2019 Analyzed: 12/10/2019					
Gasoline Range Hydrocarbons	ND	0.200	mg/kg							U
Benzene	ND	0.002	"							U
Toluene	ND	0.002	"							U
Ethylbenzene	ND	0.002	"							U
Xylenes, total	ND	0.002	"							U
Naphthalene	ND	0.008	"							U
Surrogate: 1,2-Dichloroethane-d4	0.11		"	0.125		88.7	70-130			
Surrogate: Toluene-d8	0.12		"	0.125		97.0	70-130			
Surrogate: 4-Bromofluorobenzene	0.12		"	0.125		94.1	70-130			

Origins Laboratory, Inc.



*The results in this report apply to the samples analyzed in accordance with the chain of custody document. This analytical report must be reproduced in its entirety.*

Eagle Environmental Consulting, Inc.  
 8000 W 44th Ave  
 Wheat Ridge CO 80033

Martin C Eckert III  
 Project Number: [none]  
 Project: Noble - Gemini B #31-11,12,13,14,25

**Volatile Organic Compounds by GC/MS SW846 8260D - Quality Control**  
**Origins Laboratory, Inc.**

Analyte	Result	Reporting Limit	Units	Spike Level	Source Result	%REC	%REC Limits	RPD	RPD Limit	Notes
---------	--------	-----------------	-------	-------------	---------------	------	-------------	-----	-----------	-------

Batch B9L1004 - EPA 5030 (soil)

**LCS (B9L1004-BS1)**

Prepared: 12/10/2019 Analyzed: 12/10/2019

Benzene	0.098	0.002	mg/kg	0.100		98.2	70-130			
Toluene	0.096	0.002	"	0.100		96.4	70-130			
Ethylbenzene	0.095	0.002	"	0.100		95.1	70-130			
m,p-Xylene	0.189	0.004	"	0.200		94.3	70-130			
o-Xylene	0.094	0.002	"	0.100		93.7	70-130			
Naphthalene	0.103	0.008	"	0.100		103	70-130			
Surrogate: 1,2-Dichloroethane-d4	0.10		"	0.125		82.8	70-130			
Surrogate: Toluene-d8	0.12		"	0.125		97.4	70-130			
Surrogate: 4-Bromofluorobenzene	0.11		"	0.125		90.4	70-130			

Origins Laboratory, Inc.



*The results in this report apply to the samples analyzed in accordance with the chain of custody document. This analytical report must be reproduced in its entirety.*

Eagle Environmental Consulting, Inc.  
 8000 W 44th Ave  
 Wheat Ridge CO 80033

Martin C Eckert III  
 Project Number: [none]  
 Project: Noble - Gemini B #31-11,12,13,14,25

**Volatile Organic Compounds by GC/MS SW846 8260D - Quality Control**  
**Origins Laboratory, Inc.**

Analyte	Result	Reporting Limit	Units	Spike Level	Source Result	%REC	%REC Limits	RPD	RPD Limit	Notes
---------	--------	-----------------	-------	-------------	---------------	------	-------------	-----	-----------	-------

Batch B9L1004 - EPA 5030 (soil)

Matrix Spike (B9L1004-MS1)	Source: Y912137-05			Prepared: 12/10/2019 Analyzed: 12/10/2019						
Benzene	0.103	0.002	mg/kg	0.100	ND	103	70-130			
Toluene	0.097	0.002	"	0.100	ND	97.4	70-130			
Ethylbenzene	0.095	0.002	"	0.100	0.005	89.9	70-130			
m,p-Xylene	0.190	0.004	"	0.200	0.004	92.7	70-130			
o-Xylene	0.097	0.002	"	0.100	ND	96.6	70-130			
Naphthalene	0.108	0.008	"	0.100	0.021	87.1	70-130			
Surrogate: 1,2-Dichloroethane-d4	0.11		"	0.125		85.9	70-130			
Surrogate: Toluene-d8	0.12		"	0.125		97.8	70-130			
Surrogate: 4-Bromofluorobenzene	0.12		"	0.125		93.5	70-130			

Origins Laboratory, Inc.



*The results in this report apply to the samples analyzed in accordance with the chain of custody document. This analytical report must be reproduced in its entirety.*

Eagle Environmental Consulting, Inc.  
 8000 W 44th Ave  
 Wheat Ridge CO 80033

Martin C Eckert III  
 Project Number: [none]  
 Project: Noble - Gemini B #31-11,12,13,14,25

**Volatile Organic Compounds by GC/MS SW846 8260D - Quality Control**  
**Origins Laboratory, Inc.**

Analyte	Result	Reporting Limit	Units	Spike Level	Source Result	%REC	%REC Limits	RPD	RPD Limit	Notes
---------	--------	-----------------	-------	-------------	---------------	------	-------------	-----	-----------	-------

Batch B9L1004 - EPA 5030 (soil)

Matrix Spike Dup (B9L1004-MSD1)	Source: Y912137-05			Prepared: 12/10/2019 Analyzed: 12/10/2019						
Benzene	0.094	0.002	mg/kg	0.100	ND	94.0	70-130	9.33	20	
Toluene	0.088	0.002	"	0.100	ND	88.0	70-130	10.1	20	
Ethylbenzene	0.086	0.002	"	0.100	0.005	81.1	70-130	9.81	20	
m,p-Xylene	0.171	0.004	"	0.200	0.004	83.2	70-130	10.5	20	
o-Xylene	0.088	0.002	"	0.100	ND	88.4	70-130	8.88	20	
Naphthalene	0.108	0.008	"	0.100	0.021	87.5	70-130	0.295	20	
Surrogate: 1,2-Dichloroethane-d4	0.11		"	0.125		86.6	70-130			
Surrogate: Toluene-d8	0.12		"	0.125		96.7	70-130			
Surrogate: 4-Bromofluorobenzene	0.11		"	0.125		91.0	70-130			

Origins Laboratory, Inc.



*The results in this report apply to the samples analyzed in accordance with the chain of custody document. This analytical report must be reproduced in its entirety.*

Eagle Environmental Consulting, Inc.  
 8000 W 44th Ave  
 Wheat Ridge CO 80033

Martin C Eckert III  
 Project Number: [none]  
 Project: Noble - Gemini B #31-11,12,13,14,25

**Volatile Organic Compounds by GC/MS SW846 8260D - Quality Control**  
**Origins Laboratory, Inc.**

Analyte	Result	Reporting Limit	Units	Spike Level	Source Result	%REC	%REC Limits	RPD	RPD Limit	Notes
<b>Batch B9L1005 - EPA 3580</b>										
<b>Blank (B9L1005-BLK1)</b>										
					Prepared: 12/10/2019 Analyzed: 12/10/2019					
Diesel (C10-C28)	ND	25.0	mg/kg							U
Surrogate: o-Terphenyl	21		"	25.0		83.1	50-150			

Origins Laboratory, Inc.



*The results in this report apply to the samples analyzed in accordance with the chain of custody document. This analytical report must be reproduced in its entirety.*

Eagle Environmental Consulting, Inc.  
 8000 W 44th Ave  
 Wheat Ridge CO 80033

Martin C Eckert III  
 Project Number: [none]  
 Project: Noble - Gemini B #31-11,12,13,14,25

**Extractable Petroleum Hydrocarbons by 8015D - Quality Control**  
**Origins Laboratory, Inc.**

Analyte	Result	Reporting Limit	Units	Spike Level	Source Result	%REC	%REC Limits	RPD	RPD Limit	Notes
---------	--------	-----------------	-------	-------------	---------------	------	-------------	-----	-----------	-------

**Batch B9L1005 - EPA 3580**

**LCS (B9L1005-BS1)**

Prepared: 12/10/2019 Analyzed: 12/10/2019

Diesel (C10-C28)	924	50.0	mg/kg	1000		92.4	70-130			
Surrogate: o-Terphenyl	49		"	50.0		97.3	50-150			

Origins Laboratory, Inc.



*The results in this report apply to the samples analyzed in accordance with the chain of custody document. This analytical report must be reproduced in its entirety.*

Eagle Environmental Consulting, Inc.  
 8000 W 44th Ave  
 Wheat Ridge CO 80033

Martin C Eckert III  
 Project Number: [none]  
 Project: Noble - Gemini B #31-11,12,13,14,25

**Extractable Petroleum Hydrocarbons by 8015D - Quality Control**  
**Origins Laboratory, Inc.**

Analyte	Result	Reporting Limit	Units	Spike Level	Source Result	%REC	%REC Limits	RPD	RPD Limit	Notes
---------	--------	-----------------	-------	-------------	---------------	------	-------------	-----	-----------	-------

**Batch B9L1005 - EPA 3580**

<b>Matrix Spike (B9L1005-MS1)</b>	<b>Source: Y912137-05</b>			<b>Prepared: 12/10/2019 Analyzed: 12/10/2019</b>						
Diesel (C10-C28)	965	50.0	mg/kg	1000	ND	96.5	70-130			
Surrogate: o-Terphenyl	47		"	50.0		94.3	50-150			

Origins Laboratory, Inc.



*The results in this report apply to the samples analyzed in accordance with the chain of custody document. This analytical report must be reproduced in its entirety.*

Eagle Environmental Consulting, Inc.  
 8000 W 44th Ave  
 Wheat Ridge CO 80033

Martin C Eckert III  
 Project Number: [none]  
 Project: Noble - Gemini B #31-11,12,13,14,25

**Extractable Petroleum Hydrocarbons by 8015D - Quality Control**  
**Origins Laboratory, Inc.**

Analyte	Result	Reporting Limit	Units	Spike Level	Source Result	%REC	%REC Limits	RPD	RPD Limit	Notes
<b>Batch B9L1005 - EPA 3580</b>										
<b>Matrix Spike Dup (B9L1005-MSD1)</b>		<b>Source: Y912137-05</b>			Prepared: 12/10/2019 Analyzed: 12/10/2019					
Diesel (C10-C28)	1150	50.0	mg/kg	1000	ND	115	70-130	17.7	35	
Surrogate: o-Terphenyl	52		"	50.0		104	50-150			

Origins Laboratory, Inc.



*The results in this report apply to the samples analyzed in accordance with the chain of custody document. This analytical report must be reproduced in its entirety.*

Eagle Environmental Consulting, Inc.  
8000 W 44th Ave  
Wheat Ridge CO 80033

Martin C Eckert III  
Project Number: [none]  
Project: Noble - Gemini B #31-11,12,13,14,25

---

**Notes and Definitions**

U Sample is Non-Detect.

ND Analyte NOT DETECTED at or above the reporting limit

RPD Relative Percent Difference

All soil results are reported at a wet weight basis.

Origins Laboratory, Inc.



*The results in this report apply to the samples analyzed in accordance with the chain of custody document. This analytical report must be reproduced in its entirety.*

---

Jen Pellegrini For Noelle Doyle Mathis, President



December 23, 2019

Eagle Environmental Consulting, Inc.

Martin C Eckert III

8000 W 44th Ave

Wheat Ridge CO 80033

**Project Name - Noble - Gemini B  
#31-11,12,13,14,25**

**Project Number - [none]**

Attached are your analytical results for Noble - Gemini B #31-11,12,13,14,25 received by Origins Laboratory, Inc. December 17, 2019. This project is associated with Origins project number Y912295-01.

The analytical results in the following report were analyzed under the guidelines of EPA Methods. These methods are identified as follows; "SW" are defined in SW-846, "EPA" are defined in 40CFR part 136 and "SM" are defined in the most current revision of Standard Methods For the Examination of Water and Wastewater.

The analytical results apply specifically to the samples and analyses specified per the attached Chain of Custody. As such, this report shall not be reproduced except in full, without the written approval of Origin's laboratory.

Unless otherwise noted, the analytical results for all soil samples are reported on a wet weight basis. All analytical analyses were performed under NELAP guidelines unless noted by a data qualifier.

Any holding time exceedances, deviations from the method specifications or deviations from Origins Laboratory's Standard Operating Procedures are outlined in the case narrative.

Thank you for selecting Origins for your analytical needs. Please contact us with any questions concerning this report, or if we can help with anything at all.

Origins Laboratory, Inc.  
303.433.1322  
o-squad@oelabinc.com



1725 Elk Place, Denver, CO 80211 | Phone: 303.433.1322 | Fax: 303.265.9645

Eagle Environmental Consulting, Inc.  
8000 W 44th Ave  
Wheat Ridge CO 80033

Martin C Eckert III  
Project Number: [none]  
Project: Noble - Gemini B #31-11,12,13,14,25

## CROSS REFERENCE REPORT

Sample ID	Laboratory ID	Matrix	Date Sampled	Date Received
MW-01R	Y912295-01	Water	December 17, 2019 13:37	12/17/2019 15:29
MW-02R	Y912295-02	Water	December 17, 2019 13:48	12/17/2019 15:29
MW-03R	Y912295-03	Water	December 17, 2019 13:57	12/17/2019 15:29
MW-04R	Y912295-04	Water	December 17, 2019 13:56	12/17/2019 15:29
MW-05R	Y912295-05	Water	December 17, 2019 14:06	12/17/2019 15:29
MW-06R	Y912295-06	Water	December 17, 2019 14:07	12/17/2019 15:29
MW-07	Y912295-07	Water	December 17, 2019 14:19	12/17/2019 15:29
MW-08	Y912295-08	Water	December 17, 2019 14:18	12/17/2019 15:29
MW-09	Y912295-09	Water	December 17, 2019 13:46	12/17/2019 15:29
MW-10	Y912295-10	Water	December 17, 2019 13:35	12/17/2019 15:29
MW-11	Y912295-11	Water	December 17, 2019 13:22	12/17/2019 15:29

Origins Laboratory, Inc.



*The results in this report apply to the samples analyzed in accordance with the chain of custody document. This analytical report must be reproduced in its entirety.*





Eagle Environmental Consulting, Inc.  
 8000 W 44th Ave  
 Wheat Ridge CO 80033

Martin C Eckert III  
 Project Number: [none]  
 Project: Noble - Gemini B #31-11,12,13,14,25

Origins Laboratory

F-012207-01-R1  
 Effective Date: 01/09/12

Sample Receipt Checklist

Origins Work Order: Y912295

Client: Eagle  
 Client Project ID: Gemini B # 31-11, 12, 13, 14, 25

Checklist Completed by: JG KDK  
 Date/time completed: 12 / 18 / 2019

Shipped Via: HD  
 (UPS, FedEx, Hand Delivered, Pick-up, etc.)  
 Airbill #: N/A

Matrix(s) Received: (Check all that apply): Soil/Solid  Water  Other:

Cooler Number/Temperature: 1 / 3.4 °C          /          °C          /          °C (Describe) °C

Thermometer ID: T003

Requirement Description	Yes	No	N/A	Comments (if any)
If samples require cooling, was the temperature between 0°C to ≤ 6°C <sup>(1)</sup> ?	<input checked="" type="checkbox"/>	<input type="checkbox"/>	<input type="checkbox"/>	
Is there ice present (document if blue ice is used)	<input checked="" type="checkbox"/>	<input type="checkbox"/>	<input type="checkbox"/>	
Are custody seals present on cooler? (if so, document in comments if they are signed and dated, broken or intact)	<input type="checkbox"/>	<input type="checkbox"/>	<input checked="" type="checkbox"/>	
Are custody seals present on each sample container? (if so, document in comments if they are signed and dated, broken or intact)	<input type="checkbox"/>	<input type="checkbox"/>	<input checked="" type="checkbox"/>	
Were all samples received intact <sup>(1)</sup> ?	<input checked="" type="checkbox"/>	<input type="checkbox"/>	<input type="checkbox"/>	
Was adequate sample volume provided <sup>(1)</sup> ?	<input checked="" type="checkbox"/>	<input type="checkbox"/>	<input type="checkbox"/>	
Are short holding time analytes or samples with HTs due within 48 hours present <sup>(1)</sup> ?	<input type="checkbox"/>	<input type="checkbox"/>	<input checked="" type="checkbox"/>	
Is a chain-of-custody (COC) present and filled out completely <sup>(1)</sup> ?	<input checked="" type="checkbox"/>	<input type="checkbox"/>	<input type="checkbox"/>	
Does the COC agree with the number and type of sample bottles received <sup>(1)</sup> ?	<input checked="" type="checkbox"/>	<input type="checkbox"/>	<input type="checkbox"/>	
Do the sample IDs on the bottle labels match the COC <sup>(1)</sup> ?	<input checked="" type="checkbox"/>	<input type="checkbox"/>	<input type="checkbox"/>	
Is the COC properly relinquished by the client with date and time recorded <sup>(1)</sup> ?	<input checked="" type="checkbox"/>	<input type="checkbox"/>	<input type="checkbox"/>	
For volatiles in water — is there headspace (> ¼ inch bubble) present? If yes, contact client and note in narrative.	<input type="checkbox"/>	<input checked="" type="checkbox"/>	<input type="checkbox"/>	
Are samples preserved that require preservation and was it checked <sup>(1)</sup> ? (note ID of confirmation instrument used in comments) / (preservation is not confirmed for subcontracted analyses in order to insure sample integrity)/pH <2 for samples preserved with HNO <sub>3</sub> , HCL, H <sub>2</sub> SO <sub>4</sub> / (pH > 10 for samples preserved with NaAsO <sub>2</sub> +NaOH, ZnAc+NaOH)	<input checked="" type="checkbox"/>	<input type="checkbox"/>	<input type="checkbox"/>	HA
Additional Comments (if any):				

<sup>(1)</sup>If NO, then contact the client before proceeding with analysis and note date/time and person contacted as well as the corrective action to in the additional comments (above) and the case narrative.

JG  
 Reviewed by (Project Manager)

12/19/19  
 Date/Time/Reviewed

Origins Laboratory, Inc.



The results in this report apply to the samples analyzed in accordance with the chain of custody document. This analytical report must be reproduced in its entirety.

Eagle Environmental Consulting, Inc.  
 8000 W 44th Ave  
 Wheat Ridge CO 80033

Martin C Eckert III  
 Project Number: [none]  
 Project: Noble - Gemini B #31-11,12,13,14,25

**MW-01R**

**12/17/2019 1:37:00PM**

Analyte	Result	Reporting Limit	Units	Dilution	Batch	Analyst	Prepared	Analyzed	Notes
---------	--------	-----------------	-------	----------	-------	---------	----------	----------	-------

**Origins Laboratory, Inc.**  
**Y912295-01 (Water)**

**BTEX by EPA 8260D**

Benzene	ND	4.00	ug/L	4	B9L1808	KDK	12/18/2019	12/20/2019	U
Toluene	ND	4.00	"	"	"	KDK	"	"	U
Ethylbenzene	ND	4.00	"	"	"	KDK	"	"	U
Xylenes, total	<b>40.4</b>	4.00	"	"	"	KDK	"	"	

Surrogate: 1,2-Dichloroethane-d4	106 %	70-130			"	"	"	"	
Surrogate: Toluene-d8	102 %	70-130			"	"	"	"	
Surrogate: 4-Bromofluorobenzene	105 %	70-130			"	"	"	"	

Origins Laboratory, Inc.



*The results in this report apply to the samples analyzed in accordance with the chain of custody document. This analytical report must be reproduced in its entirety.*

Eagle Environmental Consulting, Inc.  
 8000 W 44th Ave  
 Wheat Ridge CO 80033

Martin C Eckert III  
 Project Number: [none]  
 Project: Noble - Gemini B #31-11,12,13,14,25

**MW-02R**

**12/17/2019 1:48:00PM**

Analyte	Result	Reporting Limit	Units	Dilution	Batch	Analyst	Prepared	Analyzed	Notes
---------	--------	-----------------	-------	----------	-------	---------	----------	----------	-------

**Origins Laboratory, Inc.**  
**Y912295-02 (Water)**

**BTEX by EPA 8260D**

Benzene	ND	1.00	ug/L	1	B9L1808	KDK	12/18/2019	12/20/2019	U
Toluene	ND	1.00	"	"	"	KDK	"	"	U
Ethylbenzene	ND	1.00	"	"	"	KDK	"	"	U
Xylenes, total	ND	1.00	"	"	"	KDK	"	"	U

Surrogate: 1,2-Dichloroethane-d4	108 %	70-130			"	"	"	"	
Surrogate: Toluene-d8	101 %	70-130			"	"	"	"	
Surrogate: 4-Bromofluorobenzene	104 %	70-130			"	"	"	"	

Origins Laboratory, Inc.



*The results in this report apply to the samples analyzed in accordance with the chain of custody document. This analytical report must be reproduced in its entirety.*

Eagle Environmental Consulting, Inc.  
 8000 W 44th Ave  
 Wheat Ridge CO 80033

Martin C Eckert III  
 Project Number: [none]  
 Project: Noble - Gemini B #31-11,12,13,14,25

**MW-03R**

**12/17/2019 1:57:00PM**

Analyte	Result	Reporting Limit	Units	Dilution	Batch	Analyst	Prepared	Analyzed	Notes
---------	--------	-----------------	-------	----------	-------	---------	----------	----------	-------

**Origins Laboratory, Inc.**  
**Y912295-03 (Water)**

**BTEX by EPA 8260D**

Benzene	ND	1.00	ug/L	1	B9L1808	KDK	12/18/2019	12/20/2019	U
Toluene	ND	1.00	"	"	"	KDK	"	"	U
Ethylbenzene	1.22	1.00	"	"	"	KDK	"	"	
Xylenes, total	ND	1.00	"	"	"	KDK	"	"	U

Surrogate: 1,2-Dichloroethane-d4	114 %	70-130			"	"	"		
Surrogate: Toluene-d8	100 %	70-130			"	"	"		
Surrogate: 4-Bromofluorobenzene	106 %	70-130			"	"	"		

Origins Laboratory, Inc.



*The results in this report apply to the samples analyzed in accordance with the chain of custody document. This analytical report must be reproduced in its entirety.*

Eagle Environmental Consulting, Inc.  
 8000 W 44th Ave  
 Wheat Ridge CO 80033

Martin C Eckert III  
 Project Number: [none]  
 Project: Noble - Gemini B #31-11,12,13,14,25

**MW-04R**

**12/17/2019 1:56:00PM**

Analyte	Result	Reporting Limit	Units	Dilution	Batch	Analyst	Prepared	Analyzed	Notes
---------	--------	-----------------	-------	----------	-------	---------	----------	----------	-------

**Origins Laboratory, Inc.**  
**Y912295-04 (Water)**

**BTEX by EPA 8260D**

Benzene	<b>3160</b>	200	ug/L	200	B9L1808	KDK	12/18/2019	12/23/2019	
Toluene	<b>7110</b>	200	"	"	"	KDK	"	"	
Ethylbenzene	<b>201</b>	10.0	"	10	"	KDK	"	12/21/2019	
Xylenes, total	<b>3390</b>	10.0	"	"	"	KDK	"	"	
Surrogate: 1,2-Dichloroethane-d4	116 %			70-130		"	"	12/20/2019	
Surrogate: Toluene-d8	110 %			70-130		"	"	"	
Surrogate: 4-Bromofluorobenzene	90.1 %			70-130		"	"	"	

Origins Laboratory, Inc.



*The results in this report apply to the samples analyzed in accordance with the chain of custody document. This analytical report must be reproduced in its entirety.*

Eagle Environmental Consulting, Inc.  
 8000 W 44th Ave  
 Wheat Ridge CO 80033

Martin C Eckert III  
 Project Number: [none]  
 Project: Noble - Gemini B #31-11,12,13,14,25

**MW-05R**

**12/17/2019 2:06:00PM**

Analyte	Result	Reporting Limit	Units	Dilution	Batch	Analyst	Prepared	Analyzed	Notes
---------	--------	-----------------	-------	----------	-------	---------	----------	----------	-------

**Origins Laboratory, Inc.**  
**Y912295-05 (Water)**

**BTEX by EPA 8260D**

Benzene	678	4.00	ug/L	4	B9L1808	KDK	12/18/2019	12/21/2019	
Toluene	21.6	4.00	"	"	"	KDK	"	"	
Ethylbenzene	63.2	4.00	"	"	"	KDK	"	"	
Xylenes, total	745	4.00	"	"	"	KDK	"	"	

Surrogate: 1,2-Dichloroethane-d4	83.5 %	70-130			"	"		12/20/2019	
Surrogate: Toluene-d8	108 %	70-130			"	"		"	
Surrogate: 4-Bromofluorobenzene	94.4 %	70-130			"	"		"	

Origins Laboratory, Inc.



*The results in this report apply to the samples analyzed in accordance with the chain of custody document. This analytical report must be reproduced in its entirety.*

Eagle Environmental Consulting, Inc.  
 8000 W 44th Ave  
 Wheat Ridge CO 80033

Martin C Eckert III  
 Project Number: [none]  
 Project: Noble - Gemini B #31-11,12,13,14,25

**MW-06R**

**12/17/2019 2:07:00PM**

Analyte	Result	Reporting Limit	Units	Dilution	Batch	Analyst	Prepared	Analyzed	Notes
---------	--------	-----------------	-------	----------	-------	---------	----------	----------	-------

**Origins Laboratory, Inc.**  
**Y912295-06 (Water)**

**BTEX by EPA 8260D**

Benzene	ND	4.00	ug/L	4	B9L1808	KDK	12/18/2019	12/21/2019	U
Toluene	ND	4.00	"	"	"	KDK	"	"	U
Ethylbenzene	ND	4.00	"	"	"	KDK	"	"	U
Xylenes, total	ND	4.00	"	"	"	KDK	"	"	U

Surrogate: 1,2-Dichloroethane-d4	100 %	70-130			"	"	"	"	
Surrogate: Toluene-d8	101 %	70-130			"	"	"	"	
Surrogate: 4-Bromofluorobenzene	105 %	70-130			"	"	"	"	

Origins Laboratory, Inc.



*The results in this report apply to the samples analyzed in accordance with the chain of custody document. This analytical report must be reproduced in its entirety.*

Eagle Environmental Consulting, Inc.  
 8000 W 44th Ave  
 Wheat Ridge CO 80033

Martin C Eckert III  
 Project Number: [none]  
 Project: Noble - Gemini B #31-11,12,13,14,25

**MW-07**

**12/17/2019 2:19:00PM**

Analyte	Result	Reporting Limit	Units	Dilution	Batch	Analyst	Prepared	Analyzed	Notes
---------	--------	-----------------	-------	----------	-------	---------	----------	----------	-------

**Origins Laboratory, Inc.**  
**Y912295-07 (Water)**

**BTEX by EPA 8260D**

Benzene	ND	1.00	ug/L	1	B9L1808	KDK	12/18/2019	12/21/2019	U
Toluene	ND	1.00	"	"	"	KDK	"	"	U
Ethylbenzene	ND	1.00	"	"	"	KDK	"	"	U
Xylenes, total	ND	1.00	"	"	"	KDK	"	"	U

Surrogate: 1,2-Dichloroethane-d4	98.6 %	70-130			"	"	"		
Surrogate: Toluene-d8	100 %	70-130			"	"	"		
Surrogate: 4-Bromofluorobenzene	105 %	70-130			"	"	"		

Origins Laboratory, Inc.



*The results in this report apply to the samples analyzed in accordance with the chain of custody document. This analytical report must be reproduced in its entirety.*

Eagle Environmental Consulting, Inc.  
 8000 W 44th Ave  
 Wheat Ridge CO 80033

Martin C Eckert III  
 Project Number: [none]  
 Project: Noble - Gemini B #31-11,12,13,14,25

**MW-08**

**12/17/2019 2:18:00PM**

Analyte	Result	Reporting Limit	Units	Dilution	Batch	Analyst	Prepared	Analyzed	Notes
---------	--------	-----------------	-------	----------	-------	---------	----------	----------	-------

**Origins Laboratory, Inc.**  
**Y912295-08 (Water)**

**BTEX by EPA 8260D**

Benzene	573	50.0	ug/L	50	B9L1808	KDK	12/18/2019	12/23/2019	
Toluene	75.6	1.00	"	1	"	KDK	"	12/21/2019	
Ethylbenzene	28.2	1.00	"	"	"	KDK	"	"	
Xylenes, total	149	1.00	"	"	"	KDK	"	"	
Surrogate: 1,2-Dichloroethane-d4	102 %	70-130			"	"		"	
Surrogate: Toluene-d8	101 %	70-130			"	"		"	
Surrogate: 4-Bromofluorobenzene	107 %	70-130			"	"		"	

Origins Laboratory, Inc.



*The results in this report apply to the samples analyzed in accordance with the chain of custody document. This analytical report must be reproduced in its entirety.*

Eagle Environmental Consulting, Inc.  
 8000 W 44th Ave  
 Wheat Ridge CO 80033

Martin C Eckert III  
 Project Number: [none]  
 Project: Noble - Gemini B #31-11,12,13,14,25

**MW-09**

**12/17/2019 1:46:00PM**

Analyte	Result	Reporting Limit	Units	Dilution	Batch	Analyst	Prepared	Analyzed	Notes
---------	--------	-----------------	-------	----------	-------	---------	----------	----------	-------

**Origins Laboratory, Inc.**  
**Y912295-09 (Water)**

**BTEX by EPA 8260D**

Benzene	1470	50.0	ug/L	50	B9L1808	KDK	12/18/2019	12/23/2019	
Toluene	4060	50.0	"	"	"	KDK	"	"	
Ethylbenzene	104	50.0	"	"	"	KDK	"	"	
Xylenes, total	1930	50.0	"	"	"	KDK	"	"	
Surrogate: 1,2-Dichloroethane-d4	105 %			70-130		"	"	12/21/2019	
Surrogate: Toluene-d8	103 %			70-130		"	"	"	
Surrogate: 4-Bromofluorobenzene	111 %			70-130		"	"	"	

Origins Laboratory, Inc.



*The results in this report apply to the samples analyzed in accordance with the chain of custody document. This analytical report must be reproduced in its entirety.*

Eagle Environmental Consulting, Inc.  
 8000 W 44th Ave  
 Wheat Ridge CO 80033

Martin C Eckert III  
 Project Number: [none]  
 Project: Noble - Gemini B #31-11,12,13,14,25

**MW-10**

**12/17/2019 1:35:00PM**

Analyte	Result	Reporting Limit	Units	Dilution	Batch	Analyst	Prepared	Analyzed	Notes
---------	--------	-----------------	-------	----------	-------	---------	----------	----------	-------

**Origins Laboratory, Inc.**  
**Y912295-10 (Water)**

**BTEX by EPA 8260D**

Benzene	ND	1.00	ug/L	1	B9L1808	KDK	12/18/2019	12/21/2019	U
Toluene	ND	1.00	"	"	"	KDK	"	12/23/2019	U
Ethylbenzene	ND	1.00	"	"	"	KDK	"	"	U
Xylenes, total	ND	1.00	"	"	"	KDK	"	"	U

Surrogate: 1,2-Dichloroethane-d4	99.9 %	70-130			"	"		12/21/2019	
Surrogate: Toluene-d8	101 %	70-130			"	"		"	
Surrogate: 4-Bromofluorobenzene	105 %	70-130			"	"		"	

Origins Laboratory, Inc.



*The results in this report apply to the samples analyzed in accordance with the chain of custody document. This analytical report must be reproduced in its entirety.*

Eagle Environmental Consulting, Inc.  
 8000 W 44th Ave  
 Wheat Ridge CO 80033

Martin C Eckert III  
 Project Number: [none]  
 Project: Noble - Gemini B #31-11,12,13,14,25

**MW-11**

**12/17/2019 1:22:00PM**

Analyte	Result	Reporting Limit	Units	Dilution	Batch	Analyst	Prepared	Analyzed	Notes
---------	--------	-----------------	-------	----------	-------	---------	----------	----------	-------

**Origins Laboratory, Inc.**  
**Y912295-11 (Water)**

**BTEX by EPA 8260D**

Benzene	ND	1.00	ug/L	1	B9L1808	KDK	12/18/2019	12/21/2019	U
Toluene	ND	1.00	"	"	"	KDK	"	"	U
Ethylbenzene	ND	1.00	"	"	"	KDK	"	"	U
Xylenes, total	ND	1.00	"	"	"	KDK	"	"	U

Surrogate: 1,2-Dichloroethane-d4	97.7 %	70-130			"	"	"	"	
Surrogate: Toluene-d8	100 %	70-130			"	"	"	"	
Surrogate: 4-Bromofluorobenzene	107 %	70-130			"	"	"	"	

Origins Laboratory, Inc.



*The results in this report apply to the samples analyzed in accordance with the chain of custody document. This analytical report must be reproduced in its entirety.*

Eagle Environmental Consulting, Inc.  
 8000 W 44th Ave  
 Wheat Ridge CO 80033

Martin C Eckert III  
 Project Number: [none]  
 Project: Noble - Gemini B #31-11,12,13,14,25

**Volatile Organic Compounds by GC/MS SW846 8260D - Quality Control**  
**Origins Laboratory, Inc.**

Analyte	Result	Reporting Limit	Units	Spike Level	Source Result	%REC	%REC Limits	RPD	RPD Limit	Notes
---------	--------	-----------------	-------	-------------	---------------	------	-------------	-----	-----------	-------

**Batch B9L1808 - EPA 5030B (Water)**

**Blank (B9L1808-BLK1)**

Prepared: 12/18/2019 Analyzed: 12/20/2019

Benzene	ND	1.00	ug/L							U
Toluene	ND	1.00	"							U
Ethylbenzene	ND	1.00	"							U
Xylenes, total	ND	1.00	"							U
Surrogate: 1,2-Dichloroethane-d4	64		"	62.5		102	70-130			
Surrogate: Toluene-d8	63		"	62.5		100	70-130			
Surrogate: 4-Bromofluorobenzene	65		"	62.5		104	70-130			

Origins Laboratory, Inc.



*The results in this report apply to the samples analyzed in accordance with the chain of custody document. This analytical report must be reproduced in its entirety.*

Eagle Environmental Consulting, Inc.  
 8000 W 44th Ave  
 Wheat Ridge CO 80033

Martin C Eckert III  
 Project Number: [none]  
 Project: Noble - Gemini B #31-11,12,13,14,25

**Volatile Organic Compounds by GC/MS SW846 8260D - Quality Control**  
**Origins Laboratory, Inc.**

Analyte	Result	Reporting Limit	Units	Spike Level	Source Result	%REC	%REC Limits	RPD	RPD Limit	Notes
---------	--------	-----------------	-------	-------------	---------------	------	-------------	-----	-----------	-------

**Batch B9L1808 - EPA 5030B (Water)**

**LCS (B9L1808-BS1)**

Prepared: 12/18/2019 Analyzed: 12/20/2019

Benzene	45.8	1.00	ug/L	50.0		91.6	70-130			
Toluene	45.0	1.00	"	50.0		89.9	70-130			
Ethylbenzene	44.4	1.00	"	50.0		88.8	70-130			
m,p-Xylene	88.0	2.00	"	100		88.0	70-130			
o-Xylene	45.7	1.00	"	50.0		91.3	70-130			
Surrogate: 1,2-Dichloroethane-d4	67		"	62.5		107	70-130			
Surrogate: Toluene-d8	65		"	62.5		104	70-130			
Surrogate: 4-Bromofluorobenzene	62		"	62.5		99.4	70-130			

Origins Laboratory, Inc.



*The results in this report apply to the samples analyzed in accordance with the chain of custody document. This analytical report must be reproduced in its entirety.*

Eagle Environmental Consulting, Inc.  
 8000 W 44th Ave  
 Wheat Ridge CO 80033

Martin C Eckert III  
 Project Number: [none]  
 Project: Noble - Gemini B #31-11,12,13,14,25

**Volatile Organic Compounds by GC/MS SW846 8260D - Quality Control**  
**Origins Laboratory, Inc.**

Analyte	Result	Reporting Limit	Units	Spike Level	Source Result	%REC	%REC Limits	RPD	RPD Limit	Notes
---------	--------	-----------------	-------	-------------	---------------	------	-------------	-----	-----------	-------

**Batch B9L1808 - EPA 5030B (Water)**

<b>Matrix Spike (B9L1808-MS1)</b>	<b>Source: Y912295-02</b>			<b>Prepared: 12/18/2019 Analyzed: 12/20/2019</b>						
Benzene	54.2	1.00	ug/L	50.0	ND	108	70-130			
Toluene	53.1	1.00	"	50.0	0.120	106	70-130			
Ethylbenzene	48.1	1.00	"	50.0	0.060	96.1	70-130			
m,p-Xylene	99.2	2.00	"	100	0.600	98.6	70-130			
o-Xylene	49.3	1.00	"	50.0	0.170	98.2	70-130			
Surrogate: 1,2-Dichloroethane-d4	79		"	62.5		126	70-130			
Surrogate: Toluene-d8	64		"	62.5		103	70-130			
Surrogate: 4-Bromofluorobenzene	61		"	62.5		96.9	70-130			

Origins Laboratory, Inc.



*The results in this report apply to the samples analyzed in accordance with the chain of custody document. This analytical report must be reproduced in its entirety.*

Eagle Environmental Consulting, Inc.  
 8000 W 44th Ave  
 Wheat Ridge CO 80033

Martin C Eckert III  
 Project Number: [none]  
 Project: Noble - Gemini B #31-11,12,13,14,25

**Volatile Organic Compounds by GC/MS SW846 8260D - Quality Control**  
**Origins Laboratory, Inc.**

Analyte	Result	Reporting Limit	Units	Spike Level	Source Result	%REC	%REC Limits	RPD	RPD Limit	Notes
---------	--------	-----------------	-------	-------------	---------------	------	-------------	-----	-----------	-------

**Batch B9L1808 - EPA 5030B (Water)**

Matrix Spike Dup (B9L1808-MSD1)	Source: Y912295-02			Prepared: 12/18/2019 Analyzed: 12/20/2019						
Benzene	48.4	1.00	ug/L	50.0	ND	96.9	70-130	11.1	20	
Toluene	46.7	1.00	"	50.0	0.120	93.2	70-130	12.9	20	
Ethylbenzene	42.9	1.00	"	50.0	0.060	85.6	70-130	11.5	20	
m,p-Xylene	88.1	2.00	"	100	0.600	87.5	70-130	11.8	20	
o-Xylene	43.5	1.00	"	50.0	0.170	86.7	70-130	12.4	20	
Surrogate: 1,2-Dichloroethane-d4	71		"	62.5		114	70-130			
Surrogate: Toluene-d8	63		"	62.5		101	70-130			
Surrogate: 4-Bromofluorobenzene	62		"	62.5		99.0	70-130			

Origins Laboratory, Inc.



*The results in this report apply to the samples analyzed in accordance with the chain of custody document. This analytical report must be reproduced in its entirety.*

Eagle Environmental Consulting, Inc.  
8000 W 44th Ave  
Wheat Ridge CO 80033

Martin C Eckert III  
Project Number: [none]  
Project: Noble - Gemini B #31-11,12,13,14,25

---

**Notes and Definitions**

U Sample is Non-Detect.

ND Analyte NOT DETECTED at or above the reporting limit

RPD Relative Percent Difference

All soil results are reported at a wet weight basis.

Origins Laboratory, Inc.



*The results in this report apply to the samples analyzed in accordance with the chain of custody document. This analytical report must be reproduced in its entirety.*



January 07, 2020

Eagle Environmental Consulting, Inc.

Martin C Eckert III

8000 W 44th Ave

Wheat Ridge CO 80033

**Project Name - Noble - Gemini B  
#31-11,12,13,14,25**

**Project Number - [none]**

Attached are your analytical results for Noble - Gemini B #31-11,12,13,14,25 received by Origins Laboratory, Inc. January 03, 2020. This project is associated with Origins project number Y001037-01.

The analytical results in the following report were analyzed under the guidelines of EPA Methods. These methods are identified as follows; "SW" are defined in SW-846, "EPA" are defined in 40CFR part 136 and "SM" are defined in the most current revision of Standard Methods For the Examination of Water and Wastewater.

The analytical results apply specifically to the samples and analyses specified per the attached Chain of Custody. As such, this report shall not be reproduced except in full, without the written approval of Origin's laboratory.

Unless otherwise noted, the analytical results for all soil samples are reported on a wet weight basis. All analytical analyses were performed under NELAP guidelines unless noted by a data qualifier.

Any holding time exceedances, deviations from the method specifications or deviations from Origins Laboratory's Standard Operating Procedures are outlined in the case narrative.

Thank you for selecting Origins for your analytical needs. Please contact us with any questions concerning this report, or if we can help with anything at all.

Origins Laboratory, Inc.  
303.433.1322  
o-squad@oelabinc.com



1725 Elk Place, Denver, CO 80211 | Phone: 303.433.1322 | Fax: 303.265.9645

Eagle Environmental Consulting, Inc.  
8000 W 44th Ave  
Wheat Ridge CO 80033

Martin C Eckert III  
Project Number: [none]  
Project: Noble - Gemini B #31-11,12,13,14,25

CROSS REFERENCE REPORT

Sample ID	Laboratory ID	Matrix	Date Sampled	Date Received
MW-12@5-7.5'	Y001037-01	Soil	January 3, 2020 10:24	01/03/2020 14:50
MW-13@7.5-10'	Y001037-02	Soil	January 3, 2020 10:56	01/03/2020 14:50
MW-14@5-7.5'	Y001037-03	Soil	January 3, 2020 11:54	01/03/2020 14:50
MW-15@5-7.5'	Y001037-04	Soil	January 3, 2020 12:20	01/03/2020 14:50

Origins Laboratory, Inc.



*The results in this report apply to the samples analyzed in accordance with the chain of custody document. This analytical report must be reproduced in its entirety.*

Eagle Environmental Consulting, Inc.  
 8000 W 44th Ave  
 Wheat Ridge CO 80033

Martin C Eckert III  
 Project Number: [none]  
 Project: Noble - Gemini B #31-11,12,13,14,25

www.originslaboratory.com  
 page 1 of 1

Y001037

ORIGINS

LABORATORY, INC

Client: Eagle Environmental Consulting Project Manager: Martin Eckert III  
 Address: 8000 W 44th Ave Project Name: Gemini B #31-11, 12, 13, 14, 25  
Wheat Ridge, CO Project Number: \_\_\_\_\_  
 Telephone Number: 303-433-0479 Samples Collected By: ME, CE  
 Email Address: ME@eagle-enviro.com

Sample ID Description	Date Sampled	Time Sampled	# of Containers	Preservative				Matrix			Analysis			Sample Instructions			
				Unpreserved	HCl	HNO <sub>3</sub>	Other	Groundwater	Soil	Air Canister #	Other	BTEX	GR0		DRO	Negative	
MW-1205-7.5	1-3-20	1024	1					X					X				
MW-1307.5-10		1056															
MW-1405-7.5		1154															
MW-1505-7.5		1220															
MW-1505-15-17.5		1220															

Relinquished By: Jen Pellegrini Date: 1-3-20 Time: 1450  
 Relinquished By: Jen Pellegrini Date: 1-3-20 Time: 1450  
 Received By: [Signature] Date: 1-3-20 Time: 1450  
 Received By: [Signature] Date: 1-3-20 Time: 1450  
 Turnaround Time:  24 Hr  48 Hr  Standard

Temp Received: 55 Date Results Needed: Noble

\*Bill to Jacob

Origins Laboratory, Inc.

*Jen Pellegrini*

The results in this report apply to the samples analyzed in accordance with the chain of custody document. This analytical report must be reproduced in its entirety.

Eagle Environmental Consulting, Inc.  
 8000 W 44th Ave  
 Wheat Ridge CO 80033

Martin C Eckert III  
 Project Number: [none]  
 Project: Noble - Gemini B #31-11,12,13,14,25

Origins Laboratory

F-012207-01-R1  
 Effective Date: 01/09/12

**Sample Receipt Checklist**

Origins Work Order: Y001037

Client: Eagle

Client Project ID: Gemini B 31-11,12,13,14-25

Checklist Completed by: JG

Shipped Via: HD

(UPS, FedEx, Hand Delivered, Pick-up, etc.)

Date/time completed: 1/3/2020

Airbill #: N/A

Matrix(s) Received: (Check all that apply):  Soil/Solid  Water  Other: \_\_\_\_\_

Cooler Number/Temperature: 1/55 °C / \_\_\_\_\_ °C / \_\_\_\_\_ °C / \_\_\_\_\_ °C (Describe)

Thermometer ID: T003

Requirement Description	Yes	No	N/A	Comments (if any)
If samples require cooling, was the temperature between 0°C to ≤ 6°C <sup>(1)</sup> ?	<input checked="" type="checkbox"/>			
Is there ice present (document if blue ice is used)	<input checked="" type="checkbox"/>			
Are custody seals present on cooler? (if so, document in comments if they are signed and dated, broken or intact)		<input checked="" type="checkbox"/>		
Are custody seals present on each sample container? (if so, document in comments if they are signed and dated, broken or intact)		<input checked="" type="checkbox"/>		
Were all samples received intact <sup>(1)</sup> ?	<input checked="" type="checkbox"/>			
Was adequate sample volume provided <sup>(1)</sup> ?	<input checked="" type="checkbox"/>			
Are short holding time analytes or samples with HTs due within 48 hours present <sup>(1)</sup> ?		<input checked="" type="checkbox"/>		
Is a chain-of-custody (COC) present and filled out completely <sup>(1)</sup> ?	<input checked="" type="checkbox"/>			
Does the COC agree with the number and type of sample bottles received <sup>(1)</sup> ?	<input checked="" type="checkbox"/>			
Do the sample IDs on the bottle labels match the COC <sup>(1)</sup> ?	<input checked="" type="checkbox"/>			
Is the COC properly relinquished by the client with date and time recorded <sup>(1)</sup> ?	<input checked="" type="checkbox"/>			
For volatiles in water – is there headspace (> ¼ inch bubble) present? <b>If yes, contact client and note in narrative.</b>			<input checked="" type="checkbox"/>	
Are samples preserved that require preservation and was it checked <sup>(1)</sup> ? (note ID of confirmation instrument used in comments) / (preservation is not confirmed for subcontracted analyses in order to insure sample integrity)/(pH <2 for samples preserved with HNO <sub>3</sub> , HCL, H <sub>2</sub> SO <sub>4</sub> ) / (pH >10 for samples preserved with NaAsO <sub>2</sub> +NaOH, ZnAc+NaOH)			<input checked="" type="checkbox"/>	
Additional Comments (if any):				

<sup>(1)</sup>If NO, then contact the client before proceeding with analysis and note date/time and person contacted as well as the corrective action to in the additional comments (above) and the case narrative.

Reviewed by (Project Manager) [Signature]

Date/Time Reviewed 1/3/20

Origins Laboratory, Inc.

Jefe Pellegrini

The results in this report apply to the samples analyzed in accordance with the chain of custody document. This analytical report must be reproduced in its entirety.

Eagle Environmental Consulting, Inc.  
 8000 W 44th Ave  
 Wheat Ridge CO 80033

Martin C Eckert III  
 Project Number: [none]  
 Project: Noble - Gemini B #31-11,12,13,14,25

**MW-12@5-7.5'**  
**1/3/2020 10:24:00AM**

Analyte	Result	Reporting Limit	Units	Dilution	Batch	Analyst	Prepared	Analyzed	Notes
---------	--------	-----------------	-------	----------	-------	---------	----------	----------	-------

**Origins Laboratory, Inc.**  
**Y001037-01 (Soil)**

**Diesel Range Organics (DRO/TEPH) by EPA 8015D**

Diesel (C10-C28)	ND	50.0	mg/kg	1	B0A0305	TEM	01/03/2020	01/03/2020	U
<i>Surrogate: o-Terphenyl</i>	81.9 %	50-150			"	"	"	"	

**GBTEX + Naphthalene by EPA 8260D**

Gasoline Range Hydrocarbons	ND	5.00	mg/kg	25	B0A0304	KDK	01/03/2020	01/03/2020	U
Benzene	ND	0.050	"	"	"	KDK	"	"	U
Toluene	ND	0.050	"	"	"	KDK	"	"	U
Ethylbenzene	ND	0.050	"	"	"	KDK	"	"	U
Xylenes, total	ND	0.050	"	"	"	KDK	"	"	U
Naphthalene	ND	0.200	"	"	"	KDK	"	"	U
<i>Surrogate: 1,2-Dichloroethane-d4</i>	98.2 %	70-130			"	"	"	"	
<i>Surrogate: Toluene-d8</i>	101 %	70-130			"	"	"	"	
<i>Surrogate: 4-Bromofluorobenzene</i>	112 %	70-130			"	"	"	"	

Origins Laboratory, Inc.



The results in this report apply to the samples analyzed in accordance with the chain of custody document. This analytical report must be reproduced in its entirety.

Eagle Environmental Consulting, Inc.  
 8000 W 44th Ave  
 Wheat Ridge CO 80033

Martin C Eckert III  
 Project Number: [none]  
 Project: Noble - Gemini B #31-11,12,13,14,25

**MW-13@7.5-10'**  
**1/3/2020 10:56:00AM**

Analyte	Result	Reporting Limit	Units	Dilution	Batch	Analyst	Prepared	Analyzed	Notes
---------	--------	-----------------	-------	----------	-------	---------	----------	----------	-------

**Origins Laboratory, Inc.**  
**Y001037-02 (Soil)**

**Diesel Range Organics (DRO/TEPH) by EPA 8015D**

Diesel (C10-C28)	ND	50.0	mg/kg	1	B0A0305	TEM	01/03/2020	01/03/2020	U
Surrogate: <i>o</i> -Terphenyl	78.3 %	50-150			"	"	"	"	

**GBTEX + Naphthalene by EPA 8260D**

Gasoline Range Hydrocarbons	ND	5.00	mg/kg	25	B0A0304	KDK	01/03/2020	01/03/2020	U
Benzene	ND	0.050	"	"	"	KDK	"	"	U
Toluene	ND	0.050	"	"	"	KDK	"	"	U
Ethylbenzene	ND	0.050	"	"	"	KDK	"	"	U
Xylenes, total	ND	0.050	"	"	"	KDK	"	"	U
Naphthalene	ND	0.200	"	"	"	KDK	"	"	U
Surrogate: 1,2-Dichloroethane-d4	100 %	70-130			"	"	"	"	
Surrogate: Toluene-d8	99.6 %	70-130			"	"	"	"	
Surrogate: 4-Bromofluorobenzene	109 %	70-130			"	"	"	"	

Origins Laboratory, Inc.



The results in this report apply to the samples analyzed in accordance with the chain of custody document. This analytical report must be reproduced in its entirety.

Eagle Environmental Consulting, Inc.  
 8000 W 44th Ave  
 Wheat Ridge CO 80033

Martin C Eckert III  
 Project Number: [none]  
 Project: Noble - Gemini B #31-11,12,13,14,25

**MW-14@5-7.5'**  
**1/3/2020 11:54:00AM**

Analyte	Result	Reporting Limit	Units	Dilution	Batch	Analyst	Prepared	Analyzed	Notes
---------	--------	-----------------	-------	----------	-------	---------	----------	----------	-------

**Origins Laboratory, Inc.**  
**Y001037-03 (Soil)**

**Diesel Range Organics (DRO/TEPH) by EPA 8015D**

Diesel (C10-C28)	ND	50.0	mg/kg	1	B0A0305	TEM	01/03/2020	01/03/2020	U
Surrogate: o-Terphenyl	73.2 %	50-150			"	"	"	"	

**GBTEX + Naphthalene by EPA 8260D**

Gasoline Range Hydrocarbons	ND	5.00	mg/kg	25	B0A0304	KDK	01/03/2020	01/03/2020	U
Benzene	ND	0.050	"	"	"	KDK	"	"	U
Toluene	ND	0.050	"	"	"	KDK	"	"	U
Ethylbenzene	ND	0.050	"	"	"	KDK	"	"	U
Xylenes, total	ND	0.050	"	"	"	KDK	"	"	U
Naphthalene	ND	0.200	"	"	"	KDK	"	"	U
Surrogate: 1,2-Dichloroethane-d4	102 %	70-130			"	"	"	"	
Surrogate: Toluene-d8	101 %	70-130			"	"	"	"	
Surrogate: 4-Bromofluorobenzene	112 %	70-130			"	"	"	"	

Origins Laboratory, Inc.



The results in this report apply to the samples analyzed in accordance with the chain of custody document. This analytical report must be reproduced in its entirety.

Eagle Environmental Consulting, Inc.  
 8000 W 44th Ave  
 Wheat Ridge CO 80033

Martin C Eckert III  
 Project Number: [none]  
 Project: Noble - Gemini B #31-11,12,13,14,25

**MW-15@5-7.5'**  
**1/3/2020 12:20:00PM**

Analyte	Result	Reporting Limit	Units	Dilution	Batch	Analyst	Prepared	Analyzed	Notes
---------	--------	-----------------	-------	----------	-------	---------	----------	----------	-------

**Origins Laboratory, Inc.**  
**Y001037-04 (Soil)**

**Diesel Range Organics (DRO/TEPH) by EPA 8015D**

Diesel (C10-C28)	ND	50.0	mg/kg	1	B0A0305	TEM	01/03/2020	01/03/2020	U
<i>Surrogate: o-Terphenyl</i>	90.7 %	50-150			"	"	"	"	

**GBTEX + Naphthalene by EPA 8260D**

Gasoline Range Hydrocarbons	ND	5.00	mg/kg	25	B0A0304	KDK	01/03/2020	01/03/2020	U
Benzene	ND	0.050	"	"	"	KDK	"	"	U
Toluene	ND	0.050	"	"	"	KDK	"	"	U
Ethylbenzene	ND	0.050	"	"	"	KDK	"	"	U
Xylenes, total	ND	0.050	"	"	"	KDK	"	"	U
Naphthalene	ND	0.200	"	"	"	KDK	"	"	U
<i>Surrogate: 1,2-Dichloroethane-d4</i>	101 %	70-130			"	"	"	"	
<i>Surrogate: Toluene-d8</i>	103 %	70-130			"	"	"	"	
<i>Surrogate: 4-Bromofluorobenzene</i>	115 %	70-130			"	"	"	"	

Origins Laboratory, Inc.



*The results in this report apply to the samples analyzed in accordance with the chain of custody document. This analytical report must be reproduced in its entirety.*

Eagle Environmental Consulting, Inc.  
 8000 W 44th Ave  
 Wheat Ridge CO 80033

Martin C Eckert III  
 Project Number: [none]  
 Project: Noble - Gemini B #31-11,12,13,14,25

**Volatile Organic Compounds by GC/MS SW846 8260D - Quality Control**  
**Origins Laboratory, Inc.**

Analyte	Result	Reporting Limit	Units	Spike Level	Source Result	%REC	%REC Limits	RPD	RPD Limit	Notes
---------	--------	-----------------	-------	-------------	---------------	------	-------------	-----	-----------	-------

Batch B0A0304 - EPA 5030 (soil)

Blank (B0A0304-BLK1)

Prepared: 01/03/2020 Analyzed: 01/03/2020

Gasoline Range Hydrocarbons	ND	0.200	mg/kg							U
Benzene	ND	0.002	"							U
Toluene	ND	0.002	"							U
Ethylbenzene	ND	0.002	"							U
Xylenes, total	ND	0.002	"							U
Naphthalene	ND	0.008	"							U
Surrogate: 1,2-Dichloroethane-d4	0.13		"	0.125		105	70-130			
Surrogate: Toluene-d8	0.12		"	0.125		98.0	70-130			
Surrogate: 4-Bromofluorobenzene	0.14		"	0.125		111	70-130			

Origins Laboratory, Inc.



The results in this report apply to the samples analyzed in accordance with the chain of custody document. This analytical report must be reproduced in its entirety.

Eagle Environmental Consulting, Inc.  
 8000 W 44th Ave  
 Wheat Ridge CO 80033

Martin C Eckert III  
 Project Number: [none]  
 Project: Noble - Gemini B #31-11,12,13,14,25

**Volatile Organic Compounds by GC/MS SW846 8260D - Quality Control**  
**Origins Laboratory, Inc.**

Analyte	Result	Reporting Limit	Units	Spike Level	Source Result	%REC	%REC Limits	RPD	RPD Limit	Notes
---------	--------	-----------------	-------	-------------	---------------	------	-------------	-----	-----------	-------

Batch B0A0304 - EPA 5030 (soil)

**LCS (B0A0304-BS1)**

Prepared: 01/03/2020 Analyzed: 01/03/2020

Benzene	0.115	0.002	mg/kg	0.100		115	70-130			
Toluene	0.120	0.002	"	0.100		120	70-130			
Ethylbenzene	0.118	0.002	"	0.100		118	70-130			
m,p-Xylene	0.238	0.004	"	0.200		119	70-130			
o-Xylene	0.116	0.002	"	0.100		116	70-130			
Naphthalene	0.107	0.008	"	0.100		107	70-130			
Surrogate: 1,2-Dichloroethane-d4	0.12		"	0.125		94.3	70-130			
Surrogate: Toluene-d8	0.12		"	0.125		96.5	70-130			
Surrogate: 4-Bromofluorobenzene	0.14		"	0.125		116	70-130			

Origins Laboratory, Inc.



*The results in this report apply to the samples analyzed in accordance with the chain of custody document. This analytical report must be reproduced in its entirety.*

Eagle Environmental Consulting, Inc.  
 8000 W 44th Ave  
 Wheat Ridge CO 80033

Martin C Eckert III  
 Project Number: [none]  
 Project: Noble - Gemini B #31-11,12,13,14,25

**Volatile Organic Compounds by GC/MS SW846 8260D - Quality Control**  
**Origins Laboratory, Inc.**

Analyte	Result	Reporting Limit	Units	Spike Level	Source Result	%REC	%REC Limits	RPD	RPD Limit	Notes
---------	--------	-----------------	-------	-------------	---------------	------	-------------	-----	-----------	-------

Batch B0A0304 - EPA 5030 (soil)

Matrix Spike (B0A0304-MS1)	Source: Y001031-01			Prepared: 01/03/2020 Analyzed: 01/03/2020						
Benzene	0.112	0.002	mg/kg	0.100	ND	112	70-130			
Toluene	0.124	0.002	"	0.100	ND	124	70-130			
Ethylbenzene	0.103	0.002	"	0.100	ND	103	70-130			
m,p-Xylene	0.206	0.004	"	0.200	ND	103	70-130			
o-Xylene	0.103	0.002	"	0.100	ND	103	70-130			
Naphthalene	0.124	0.008	"	0.100	0.018	106	70-130			
Surrogate: 1,2-Dichloroethane-d4	0.12		"	0.125		97.4	70-130			
Surrogate: Toluene-d8	0.14		"	0.125		109	70-130			
Surrogate: 4-Bromofluorobenzene	0.13		"	0.125		105	70-130			

Origins Laboratory, Inc.



*The results in this report apply to the samples analyzed in accordance with the chain of custody document. This analytical report must be reproduced in its entirety.*

Eagle Environmental Consulting, Inc.  
 8000 W 44th Ave  
 Wheat Ridge CO 80033

Martin C Eckert III  
 Project Number: [none]  
 Project: Noble - Gemini B #31-11,12,13,14,25

**Volatile Organic Compounds by GC/MS SW846 8260D - Quality Control**  
**Origins Laboratory, Inc.**

Analyte	Result	Reporting Limit	Units	Spike Level	Source Result	%REC	%REC Limits	RPD	RPD Limit	Notes
---------	--------	-----------------	-------	-------------	---------------	------	-------------	-----	-----------	-------

Batch B0A0304 - EPA 5030 (soil)

Matrix Spike Dup (B0A0304-MSD1)	Source: Y001031-01			Prepared: 01/03/2020 Analyzed: 01/03/2020						
Benzene	0.093	0.002	mg/kg	0.100	ND	93.0	70-130	18.5	20	
Toluene	0.097	0.002	"	0.100	ND	96.7	70-130	24.4	20	QR-03
Ethylbenzene	0.091	0.002	"	0.100	ND	91.1	70-130	12.3	20	
m,p-Xylene	0.184	0.004	"	0.200	ND	91.8	70-130	11.6	20	
o-Xylene	0.088	0.002	"	0.100	ND	88.4	70-130	15.0	20	
Naphthalene	0.087	0.008	"	0.100	0.018	68.4	70-130	35.4	20	QM-07, QR-03
Surrogate: 1,2-Dichloroethane-d4	0.12		"	0.125		94.9	70-130			
Surrogate: Toluene-d8	0.13		"	0.125		101	70-130			
Surrogate: 4-Bromofluorobenzene	0.14		"	0.125		112	70-130			

Origins Laboratory, Inc.



The results in this report apply to the samples analyzed in accordance with the chain of custody document. This analytical report must be reproduced in its entirety.

Eagle Environmental Consulting, Inc.  
 8000 W 44th Ave  
 Wheat Ridge CO 80033

Martin C Eckert III  
 Project Number: [none]  
 Project: Noble - Gemini B #31-11,12,13,14,25

**Volatile Organic Compounds by GC/MS SW846 8260D - Quality Control**  
**Origins Laboratory, Inc.**

Analyte	Result	Reporting Limit	Units	Spike Level	Source Result	%REC	%REC Limits	RPD	RPD Limit	Notes
<b>Batch B0A0305 - EPA 3580</b>										
<b>Blank (B0A0305-BLK1)</b>										
					Prepared: 01/03/2020 Analyzed: 01/03/2020					
Diesel (C10-C28)	ND	25.0	mg/kg							U
Surrogate: o-Terphenyl	18		"	25.0		70.7	50-150			

Origins Laboratory, Inc.



*The results in this report apply to the samples analyzed in accordance with the chain of custody document. This analytical report must be reproduced in its entirety.*

Eagle Environmental Consulting, Inc.  
 8000 W 44th Ave  
 Wheat Ridge CO 80033

Martin C Eckert III  
 Project Number: [none]  
 Project: Noble - Gemini B #31-11,12,13,14,25

**Extractable Petroleum Hydrocarbons by 8015D - Quality Control**  
**Origins Laboratory, Inc.**

Analyte	Result	Reporting Limit	Units	Spike Level	Source Result	%REC	%REC Limits	RPD	RPD Limit	Notes
---------	--------	-----------------	-------	-------------	---------------	------	-------------	-----	-----------	-------

**Batch B0A0305 - EPA 3580**

**LCS (B0A0305-BS1)**

Prepared: 01/03/2020 Analyzed: 01/03/2020

Diesel (C10-C28)	1090	50.0	mg/kg	1000		109	70-130			
Surrogate: <i>o</i> -Terphenyl	52		"	50.0		104	50-150			

Origins Laboratory, Inc.



*The results in this report apply to the samples analyzed in accordance with the chain of custody document. This analytical report must be reproduced in its entirety.*

Eagle Environmental Consulting, Inc.  
 8000 W 44th Ave  
 Wheat Ridge CO 80033

Martin C Eckert III  
 Project Number: [none]  
 Project: Noble - Gemini B #31-11,12,13,14,25

**Extractable Petroleum Hydrocarbons by 8015D - Quality Control**  
**Origins Laboratory, Inc.**

Analyte	Result	Reporting Limit	Units	Spike Level	Source Result	%REC	%REC Limits	RPD	RPD Limit	Notes
---------	--------	-----------------	-------	-------------	---------------	------	-------------	-----	-----------	-------

Batch B0A0305 - EPA 3580

Matrix Spike (B0A0305-MS1)	Source: Y001031-01			Prepared: 01/03/2020 Analyzed: 01/03/2020						
Diesel (C10-C28)	859	50.0	mg/kg	1000	ND	85.9	70-130			
Surrogate: o-Terphenyl	39		"	50.0		78.8	50-150			

Origins Laboratory, Inc.



*The results in this report apply to the samples analyzed in accordance with the chain of custody document. This analytical report must be reproduced in its entirety.*

Eagle Environmental Consulting, Inc.  
 8000 W 44th Ave  
 Wheat Ridge CO 80033

Martin C Eckert III  
 Project Number: [none]  
 Project: Noble - Gemini B #31-11,12,13,14,25

**Extractable Petroleum Hydrocarbons by 8015D - Quality Control**  
**Origins Laboratory, Inc.**

Analyte	Result	Reporting Limit	Units	Spike Level	Source Result	%REC	%REC Limits	RPD	RPD Limit	Notes
---------	--------	-----------------	-------	-------------	---------------	------	-------------	-----	-----------	-------

**Batch B0A0305 - EPA 3580**

<b>Matrix Spike Dup (B0A0305-MSD1)</b>	<b>Source: Y001031-01</b>			<b>Prepared: 01/03/2020 Analyzed: 01/03/2020</b>						
Diesel (C10-C28)	864	50.0	mg/kg	1000	ND	86.4	70-130	0.567	35	
Surrogate: o-Terphenyl	45		"	50.0		89.0	50-150			

Origins Laboratory, Inc.



*The results in this report apply to the samples analyzed in accordance with the chain of custody document. This analytical report must be reproduced in its entirety.*

Eagle Environmental Consulting, Inc.  
8000 W 44th Ave  
Wheat Ridge CO 80033

Martin C Eckert III  
Project Number: [none]  
Project: Noble - Gemini B #31-11,12,13,14,25

### Notes and Definitions

U Sample is Non-Detect.

QR-03 The RPD value for the sample duplicate or MS/MSD was outside of QC acceptance limits due to matrix interference. QC batch accepted based on LCS and/or LCSD recovery and/or RPD values.

QM-07 The spike recovery was outside acceptance limits for the MS and/or MSD. The batch was accepted based on acceptable LCS recovery.

ND Analyte NOT DETECTED at or above the reporting limit

RPD Relative Percent Difference

All soil results are reported at a wet weight basis.

Origins Laboratory, Inc.



*The results in this report apply to the samples analyzed in accordance with the chain of custody document. This analytical report must be reproduced in its entirety.*



January 29, 2020

Eagle Environmental Consulting, Inc.

Martin C Eckert III

8000 W 44th Ave

Wheat Ridge CO 80033

**Project Name - Noble - Gemini B  
#31-11,12,13,14,25**

**Project Number - [none]**

Attached are your analytical results for Noble - Gemini B #31-11,12,13,14,25 received by Origins Laboratory, Inc. January 23, 2020. This project is associated with Origins project number Y001328-01.

The analytical results in the following report were analyzed under the guidelines of EPA Methods. These methods are identified as follows; "SW" are defined in SW-846, "EPA" are defined in 40CFR part 136 and "SM" are defined in the most current revision of Standard Methods For the Examination of Water and Wastewater.

The analytical results apply specifically to the samples and analyses specified per the attached Chain of Custody. As such, this report shall not be reproduced except in full, without the written approval of Origin's laboratory.

Unless otherwise noted, the analytical results for all soil samples are reported on a wet weight basis. All analytical analyses were performed under NELAP guidelines unless noted by a data qualifier.

Any holding time exceedances, deviations from the method specifications or deviations from Origins Laboratory's Standard Operating Procedures are outlined in the case narrative.

Thank you for selecting Origins for your analytical needs. Please contact us with any questions concerning this report, or if we can help with anything at all.

Origins Laboratory, Inc.  
303.433.1322  
o-squad@oelabinc.com



1725 Elk Place, Denver, CO 80211 | Phone: 303.433.1322 | Fax: 303.265.9645

Eagle Environmental Consulting, Inc.  
8000 W 44th Ave  
Wheat Ridge CO 80033

Martin C Eckert III  
Project Number: [none]  
Project: Noble - Gemini B #31-11,12,13,14,25

## CROSS REFERENCE REPORT

Sample ID	Laboratory ID	Matrix	Date Sampled	Date Received
MW-01R	Y001328-01	Water	January 23, 2020 14:48	01/23/2020 15:51
MW-02R	Y001328-02	Water	January 23, 2020 14:48	01/23/2020 15:51
MW-03R	Y001328-03	Water	January 23, 2020 14:40	01/23/2020 15:51
MW-04R	Y001328-04	Water	January 23, 2020 14:33	01/23/2020 15:51
MW-05R	Y001328-05	Water	January 23, 2020 14:36	01/23/2020 15:51
MW-06R	Y001328-06	Water	January 23, 2020 14:24	01/23/2020 15:51
MW-07	Y001328-07	Water	January 23, 2020 14:23	01/23/2020 15:51
MW-08	Y001328-08	Water	January 23, 2020 14:17	01/23/2020 15:51
MW-09	Y001328-09	Water	January 23, 2020 14:08	01/23/2020 15:51
MW-10	Y001328-10	Water	January 23, 2020 10:59	01/23/2020 15:51
MW-11	Y001328-11	Water	January 23, 2020 11:11	01/23/2020 15:51
MW-12	Y001328-12	Water	January 23, 2020 11:20	01/23/2020 15:51
MW-13	Y001328-13	Water	January 23, 2020 11:30	01/23/2020 15:51
MW-14	Y001328-14	Water	January 23, 2020 11:40	01/23/2020 15:51

Origins Laboratory, Inc.



*The results in this report apply to the samples analyzed in accordance with the chain of custody document. This analytical report must be reproduced in its entirety.*

Eagle Environmental Consulting, Inc.  
8000 W 44th Ave  
Wheat Ridge CO 80033

Martin C Eckert III  
Project Number: [none]  
Project: Noble - Gemini B #31-11,12,13,14,25

CROSS REFERENCE REPORT

Sample ID	Laboratory ID	Matrix	Date Sampled	Date Received
MW-15	Y001328-15	Water	January 23, 2020 14:11	01/23/2020 15:51

Origins Laboratory, Inc.



*The results in this report apply to the samples analyzed in accordance with the chain of custody document. This analytical report must be reproduced in its entirety.*



Eagle Environmental Consulting, Inc.  
 8000 W 44th Ave  
 Wheat Ridge CO 80033

Martin C Eckert III  
 Project Number: [none]  
 Project: Noble - Gemini B #31-11,12,13,14,25

www.originslaboratory.com

0001328  
**ORIGINS**  
 LABORATORY, INC

page 2 of 2

Client: Eagle Environmental Consulting  
 Project Manager: MARTIN ECKERT III  
 Address: 8000 W. 44th Ave  
 Project Name: Gemini B #31-11,12,13,14,25  
Wheat Ridge, CO 80033  
 Project Number: —  
 Telephone Number: 303-433-0479  
 Samples Collected By: MM/GEC  
 Email Address: mc3@eagle-enviro.com

1725 Elk Place | Denver, CO 80211 | Phone: 303.433.1322 | Fax: 303.265.9645

Sample ID Description	Date Sampled	Time Sampled	# of Containers	Preservative				Matrix			Analysis	Sample Instructions		
				Unpreserved	HCl	HNO <sub>3</sub>	Other	Groundwater	Soil	Air Summg Canister #			Other	
MW-11	11/23/20	11:11	3	X				X					1	
MW-12		11:20											2	
MW-13		11:30											3	
MW-14		11:40											4	
MW-15		14:11											5	
													6	
													7	
													8	
													9	
													10	

Relinquished By: [Signature] Date: 11/23/20 Time: 15:51  
 Relinquished By: [Signature] Date: 11/23/20 Time: 15:51  
 Received By: [Signature] Date: 11/23/20 Time: 15:51  
 Received By: [Signature] Date: 11/23/20 Time: 15:51  
 Turnaround Time: Same Day  24 Hr   
 48 Hr  Standard

Date Results Needed: Noble

Temp Received: 28

\* Bill to JLAB

Origins Laboratory, Inc.

*Jefe Pellegrini*

The results in this report apply to the samples analyzed in accordance with the chain of custody document. This analytical report must be reproduced in its entirety.

Eagle Environmental Consulting, Inc.  
 8000 W 44th Ave  
 Wheat Ridge CO 80033

Martin C Eckert III  
 Project Number: [none]  
 Project: Noble - Gemini B #31-11,12,13,14,25

Origins Laboratory

F-012207-01-R1  
 Effective Date: 01/09/12

**Sample Receipt Checklist**

Origins Work Order: Y001328

Client: Eagle

Client Project ID: Gemini B 31-11,12,13,14,25

Checklist Completed by: JG

Shipped Via: HD  
 (UPS, FedEx, Hand Delivered, Pick-up, etc.)

Date/time completed: 1/24/2020

Airbill #: N/A

Matrix(s) Received: (Check all that apply): Soil/Solid  Water  Other: \_\_\_\_\_

Cooler Number/Temperature: 1 / 2.8 °c \_\_\_\_\_ °c \_\_\_\_\_ °c (Describe)

Thermometer ID: T003

Requirement Description	Yes	No	N/A	Comments (if any)
If samples require cooling, was the temperature between 0°C to ≤ 6°C <sup>(1)</sup> ?	<input checked="" type="checkbox"/>			
Is there ice present (document if blue ice is used)	<input checked="" type="checkbox"/>			
Are custody seals present on cooler? (if so, document in comments if they are signed and dated, broken or intact)		<input checked="" type="checkbox"/>		
Are custody seals present on each sample container? (if so, document in comments if they are signed and dated, broken or intact)		<input checked="" type="checkbox"/>		
Were all samples received intact <sup>(1)</sup> ?	<input checked="" type="checkbox"/>			
Was adequate sample volume provided <sup>(1)</sup> ?	<input checked="" type="checkbox"/>			
Are short holding time analytes or samples with HTs due within 48 hours present <sup>(1)</sup> ?		<input checked="" type="checkbox"/>		
Is a chain-of-custody (COC) present and filled out completely <sup>(1)</sup> ?	<input checked="" type="checkbox"/>			
Does the COC agree with the number and type of sample bottles received <sup>(1)</sup> ?	<input checked="" type="checkbox"/>			
Do the sample IDs on the bottle labels match the COC <sup>(1)</sup> ?	<input checked="" type="checkbox"/>			
Is the COC properly relinquished by the client with date and time recorded <sup>(1)</sup> ?	<input checked="" type="checkbox"/>			
For volatiles in water – is there headspace (> ¼ inch bubble) present? If yes, contact client and note in narrative.		<input checked="" type="checkbox"/>		
Are samples preserved that require preservation and was it checked <sup>(1)</sup> ? (note ID of confirmation instrument used in comments) / (preservation is not confirmed for subcontracted analyses in order to insure sample integrity)/(pH <2 for samples preserved with HNO3, HCL, H2SO4) / (pH >10 for samples preserved with NaAsO2+NaOH, ZnAc+NaOH)		<input checked="" type="checkbox"/>		
Additional Comments (if any):				

<sup>(1)</sup>If NO, then contact the client before proceeding with analysis and note date/time and person contacted as well as the corrective action to in the additional comments (above) and the case narrative.

JG  
 Reviewed by (Project Manager)

01/27/20  
 Date/Time Reviewed

Origins Laboratory, Inc.



The results in this report apply to the samples analyzed in accordance with the chain of custody document. This analytical report must be reproduced in its entirety.

Eagle Environmental Consulting, Inc.  
 8000 W 44th Ave  
 Wheat Ridge CO 80033

Martin C Eckert III  
 Project Number: [none]  
 Project: Noble - Gemini B #31-11,12,13,14,25

**MW-01R**

**1/23/2020 2:48:00PM**

Analyte	Result	Reporting Limit	Units	Dilution	Batch	Analyst	Prepared	Analyzed	Notes
---------	--------	-----------------	-------	----------	-------	---------	----------	----------	-------

**Origins Laboratory, Inc.**  
**Y001328-01 (Water)**

**BTEX by EPA 8260D**

Benzene	ND	1.00	ug/L	1	B0A2402	ZZZ	01/24/2020	01/28/2020	U
Toluene	ND	1.00	"	"	"	ZZZ	"	"	U
Ethylbenzene	9.77	1.00	"	"	"	ZZZ	"	"	
Xylenes, total	177	1.00	"	"	"	ZZZ	"	"	

Surrogate: 1,2-Dichloroethane-d4	99.5 %	70-130			"	"	"		
Surrogate: Toluene-d8	96.9 %	70-130			"	"	"		
Surrogate: 4-Bromofluorobenzene	102 %	70-130			"	"	"		

Origins Laboratory, Inc.



*The results in this report apply to the samples analyzed in accordance with the chain of custody document. This analytical report must be reproduced in its entirety.*

Eagle Environmental Consulting, Inc.  
 8000 W 44th Ave  
 Wheat Ridge CO 80033

Martin C Eckert III  
 Project Number: [none]  
 Project: Noble - Gemini B #31-11,12,13,14,25

**MW-02R**

**1/23/2020 2:48:00PM**

Analyte	Result	Reporting Limit	Units	Dilution	Batch	Analyst	Prepared	Analyzed	Notes
---------	--------	-----------------	-------	----------	-------	---------	----------	----------	-------

**Origins Laboratory, Inc.**  
**Y001328-02 (Water)**

**BTEX by EPA 8260D**

Benzene	ND	4.00	ug/L	4	B0A2402	ZZZ	01/24/2020	01/28/2020	U
Toluene	ND	4.00	"	"	"	ZZZ	"	"	U
Ethylbenzene	ND	4.00	"	"	"	ZZZ	"	"	U
Xylenes, total	ND	4.00	"	"	"	ZZZ	"	"	U

Surrogate: 1,2-Dichloroethane-d4	99.3 %	70-130			"	"	"	"	
Surrogate: Toluene-d8	95.6 %	70-130			"	"	"	"	
Surrogate: 4-Bromofluorobenzene	102 %	70-130			"	"	"	"	

Origins Laboratory, Inc.



*The results in this report apply to the samples analyzed in accordance with the chain of custody document. This analytical report must be reproduced in its entirety.*

Eagle Environmental Consulting, Inc.  
 8000 W 44th Ave  
 Wheat Ridge CO 80033

Martin C Eckert III  
 Project Number: [none]  
 Project: Noble - Gemini B #31-11,12,13,14,25

**MW-03R**

**1/23/2020 2:40:00PM**

Analyte	Result	Reporting Limit	Units	Dilution	Batch	Analyst	Prepared	Analyzed	Notes
---------	--------	-----------------	-------	----------	-------	---------	----------	----------	-------

**Origins Laboratory, Inc.**  
**Y001328-03 (Water)**

**BTEX by EPA 8260D**

Benzene	ND	1.00	ug/L	1	B0A2402	ZZZ	01/24/2020	01/28/2020	U
Toluene	ND	1.00	"	"	"	ZZZ	"	"	U
Ethylbenzene	1.11	1.00	"	"	"	ZZZ	"	"	
Xylenes, total	ND	1.00	"	"	"	ZZZ	"	"	U

Surrogate: 1,2-Dichloroethane-d4	102 %	70-130			"	"	"		
Surrogate: Toluene-d8	95.7 %	70-130			"	"	"		
Surrogate: 4-Bromofluorobenzene	101 %	70-130			"	"	"		

Origins Laboratory, Inc.



*The results in this report apply to the samples analyzed in accordance with the chain of custody document. This analytical report must be reproduced in its entirety.*

Eagle Environmental Consulting, Inc.  
 8000 W 44th Ave  
 Wheat Ridge CO 80033

Martin C Eckert III  
 Project Number: [none]  
 Project: Noble - Gemini B #31-11,12,13,14,25

**MW-04R**

**1/23/2020 2:33:00PM**

Analyte	Result	Reporting Limit	Units	Dilution	Batch	Analyst	Prepared	Analyzed	Notes
---------	--------	-----------------	-------	----------	-------	---------	----------	----------	-------

**Origins Laboratory, Inc.**  
**Y001328-04 (Water)**

**BTEX by EPA 8260D**

Benzene	<b>3240</b>	50.0	ug/L	50	B0A2402	KDK	01/24/2020	01/29/2020	
Toluene	<b>5240</b>	50.0	"	"	"	KDK	"	"	
Ethylbenzene	<b>136</b>	1.00	"	1	"	ZZZ	"	01/28/2020	
Xylenes, total	<b>3030</b>	50.0	"	50	"	KDK	"	01/29/2020	
Surrogate: 1,2-Dichloroethane-d4	105 %			70-130		"	"	"	
Surrogate: Toluene-d8	117 %			70-130		"	"	01/28/2020	
Surrogate: 4-Bromofluorobenzene	95.6 %			70-130		"	"	"	

Origins Laboratory, Inc.



*The results in this report apply to the samples analyzed in accordance with the chain of custody document. This analytical report must be reproduced in its entirety.*

Eagle Environmental Consulting, Inc.  
 8000 W 44th Ave  
 Wheat Ridge CO 80033

Martin C Eckert III  
 Project Number: [none]  
 Project: Noble - Gemini B #31-11,12,13,14,25

**MW-05R**

**1/23/2020 2:36:00PM**

Analyte	Result	Reporting Limit	Units	Dilution	Batch	Analyst	Prepared	Analyzed	Notes
---------	--------	-----------------	-------	----------	-------	---------	----------	----------	-------

**Origins Laboratory, Inc.**  
**Y001328-05 (Water)**

**BTEX by EPA 8260D**

Benzene	<b>1170</b>	50.0	ug/L	50	B0A2402	KDK	01/24/2020	01/29/2020	
Toluene	<b>5.64</b>	1.00	"	1	"	ZZZ	"	01/29/2020	
Ethylbenzene	<b>109</b>	1.00	"	"	"	ZZZ	"	"	
Xylenes, total	<b>840</b>	50.0	"	50	"	KDK	"	01/29/2020	
Surrogate: 1,2-Dichloroethane-d4	89.6 %			70-130		"	"	01/29/2020	
Surrogate: Toluene-d8	99.3 %			70-130		"	"	"	
Surrogate: 4-Bromofluorobenzene	101 %			70-130		"	"	"	

Origins Laboratory, Inc.



*The results in this report apply to the samples analyzed in accordance with the chain of custody document. This analytical report must be reproduced in its entirety.*

Eagle Environmental Consulting, Inc.  
 8000 W 44th Ave  
 Wheat Ridge CO 80033

Martin C Eckert III  
 Project Number: [none]  
 Project: Noble - Gemini B #31-11,12,13,14,25

**MW-06R**

**1/23/2020 2:24:00PM**

Analyte	Result	Reporting Limit	Units	Dilution	Batch	Analyst	Prepared	Analyzed	Notes
---------	--------	-----------------	-------	----------	-------	---------	----------	----------	-------

**Origins Laboratory, Inc.**  
**Y001328-06 (Water)**

**BTEX by EPA 8260D**

Benzene	ND	1.00	ug/L	1	B0A2402	ZZZ	01/24/2020	01/29/2020	U
Toluene	ND	1.00	"	"	"	ZZZ	"	"	U
Ethylbenzene	ND	1.00	"	"	"	ZZZ	"	"	U
Xylenes, total	ND	1.00	"	"	"	KDK	"	01/29/2020	U

Surrogate: 1,2-Dichloroethane-d4	99.7 %	70-130			"	"		01/29/2020	
Surrogate: Toluene-d8	101 %	70-130			"	"		"	
Surrogate: 4-Bromofluorobenzene	103 %	70-130			"	"		"	

Origins Laboratory, Inc.



The results in this report apply to the samples analyzed in accordance with the chain of custody document. This analytical report must be reproduced in its entirety.

Eagle Environmental Consulting, Inc.  
 8000 W 44th Ave  
 Wheat Ridge CO 80033

Martin C Eckert III  
 Project Number: [none]  
 Project: Noble - Gemini B #31-11,12,13,14,25

**MW-07**  
**1/23/2020 2:23:00PM**

Analyte	Result	Reporting Limit	Units	Dilution	Batch	Analyst	Prepared	Analyzed	Notes
---------	--------	-----------------	-------	----------	-------	---------	----------	----------	-------

**Origins Laboratory, Inc.**  
**Y001328-07 (Water)**

**BTEX by EPA 8260D**

Benzene	ND	1.00	ug/L	1	B0A2402	ZZZ	01/24/2020	01/29/2020	U
Toluene	ND	1.00	"	"	"	ZZZ	"	"	U
Ethylbenzene	ND	1.00	"	"	"	ZZZ	"	"	U
Xylenes, total	ND	1.00	"	"	"	ZZZ	"	"	U

Surrogate: 1,2-Dichloroethane-d4	98.8 %	70-130			"	"	"	"	
Surrogate: Toluene-d8	98.3 %	70-130			"	"	"	"	
Surrogate: 4-Bromofluorobenzene	99.4 %	70-130			"	"	"	"	

Origins Laboratory, Inc.



*The results in this report apply to the samples analyzed in accordance with the chain of custody document. This analytical report must be reproduced in its entirety.*

Eagle Environmental Consulting, Inc.  
 8000 W 44th Ave  
 Wheat Ridge CO 80033

Martin C Eckert III  
 Project Number: [none]  
 Project: Noble - Gemini B #31-11,12,13,14,25

**MW-08**  
**1/23/2020 2:17:00PM**

Analyte	Result	Reporting Limit	Units	Dilution	Batch	Analyst	Prepared	Analyzed	Notes
---------	--------	-----------------	-------	----------	-------	---------	----------	----------	-------

**Origins Laboratory, Inc.**  
**Y001328-08 (Water)**

**BTEX by EPA 8260D**

Benzene	6.91	1.00	ug/L	1	B0A2402	KDK	01/24/2020	01/29/2020	
Toluene	ND	1.00	"	"	"	KDK	"	"	U
Ethylbenzene	1.29	1.00	"	"	"	KDK	"	"	
Xylenes, total	5.72	1.00	"	"	"	KDK	"	"	

Surrogate: 1,2-Dichloroethane-d4	98.3 %	70-130			"	"		01/29/2020	
Surrogate: Toluene-d8	93.9 %	70-130			"	"		"	
Surrogate: 4-Bromofluorobenzene	103 %	70-130			"	"		"	

Origins Laboratory, Inc.



*The results in this report apply to the samples analyzed in accordance with the chain of custody document. This analytical report must be reproduced in its entirety.*

Eagle Environmental Consulting, Inc.  
 8000 W 44th Ave  
 Wheat Ridge CO 80033

Martin C Eckert III  
 Project Number: [none]  
 Project: Noble - Gemini B #31-11,12,13,14,25

**MW-09**  
**1/23/2020 2:08:00PM**

Analyte	Result	Reporting Limit	Units	Dilution	Batch	Analyst	Prepared	Analyzed	Notes
---------	--------	-----------------	-------	----------	-------	---------	----------	----------	-------

**Origins Laboratory, Inc.**  
**Y001328-09 (Water)**

**BTEX by EPA 8260D**

Benzene	<b>1680</b>	50.0	ug/L	50	B0A2402	KDK	01/24/2020	01/29/2020	
Toluene	<b>3280</b>	50.0	"	"	"	KDK	"	"	
Ethylbenzene	<b>68.6</b>	1.00	"	1	"	ZZZ	"	01/29/2020	
Xylenes, total	<b>2440</b>	50.0	"	50	"	KDK	"	01/29/2020	
Surrogate: 1,2-Dichloroethane-d4	86.0 %			70-130		"	"	01/29/2020	
Surrogate: Toluene-d8	111 %			70-130		"	"	"	
Surrogate: 4-Bromofluorobenzene	96.3 %			70-130		"	"	"	

Origins Laboratory, Inc.



*The results in this report apply to the samples analyzed in accordance with the chain of custody document. This analytical report must be reproduced in its entirety.*

Eagle Environmental Consulting, Inc.  
 8000 W 44th Ave  
 Wheat Ridge CO 80033

Martin C Eckert III  
 Project Number: [none]  
 Project: Noble - Gemini B #31-11,12,13,14,25

**MW-10**

**1/23/2020 10:59:00AM**

Analyte	Result	Reporting Limit	Units	Dilution	Batch	Analyst	Prepared	Analyzed	Notes
---------	--------	-----------------	-------	----------	-------	---------	----------	----------	-------

**Origins Laboratory, Inc.**  
**Y001328-10 (Water)**

**BTEX by EPA 8260D**

Benzene	ND	1.00	ug/L	1	B0A2402	ZZZ	01/24/2020	01/29/2020	U
Toluene	ND	1.00	"	"	"	KDK	"	01/29/2020	U
Ethylbenzene	ND	1.00	"	"	"	ZZZ	"	01/29/2020	U
Xylenes, total	ND	1.00	"	"	"	KDK	"	01/29/2020	U

Surrogate: 1,2-Dichloroethane-d4	97.1 %	70-130			"	"		01/29/2020	
Surrogate: Toluene-d8	94.9 %	70-130			"	"		"	
Surrogate: 4-Bromofluorobenzene	102 %	70-130			"	"		"	

Origins Laboratory, Inc.



*The results in this report apply to the samples analyzed in accordance with the chain of custody document. This analytical report must be reproduced in its entirety.*

Eagle Environmental Consulting, Inc.  
 8000 W 44th Ave  
 Wheat Ridge CO 80033

Martin C Eckert III  
 Project Number: [none]  
 Project: Noble - Gemini B #31-11,12,13,14,25

**MW-11**

**1/23/2020 11:11:00AM**

Analyte	Result	Reporting Limit	Units	Dilution	Batch	Analyst	Prepared	Analyzed	Notes
---------	--------	-----------------	-------	----------	-------	---------	----------	----------	-------

**Origins Laboratory, Inc.**  
**Y001328-11 (Water)**

**BTEX by EPA 8260D**

Benzene	ND	1.00	ug/L	1	B0A2402	ZZZ	01/24/2020	01/29/2020	U
Toluene	ND	1.00	"	"	"	ZZZ	"	"	U
Ethylbenzene	ND	1.00	"	"	"	ZZZ	"	"	U
Xylenes, total	ND	1.00	"	"	"	ZZZ	"	"	U

Surrogate: 1,2-Dichloroethane-d4	99.9 %	70-130			"	"	"	"	
Surrogate: Toluene-d8	94.2 %	70-130			"	"	"	"	
Surrogate: 4-Bromofluorobenzene	101 %	70-130			"	"	"	"	

Origins Laboratory, Inc.



*The results in this report apply to the samples analyzed in accordance with the chain of custody document. This analytical report must be reproduced in its entirety.*

Eagle Environmental Consulting, Inc.  
 8000 W 44th Ave  
 Wheat Ridge CO 80033

Martin C Eckert III  
 Project Number: [none]  
 Project: Noble - Gemini B #31-11,12,13,14,25

**MW-12**

**1/23/2020 11:20:00AM**

Analyte	Result	Reporting Limit	Units	Dilution	Batch	Analyst	Prepared	Analyzed	Notes
---------	--------	-----------------	-------	----------	-------	---------	----------	----------	-------

**Origins Laboratory, Inc.**  
**Y001328-12 (Water)**

**BTEX by EPA 8260D**

Benzene	ND	1.00	ug/L	1	B0A2402	ZZZ	01/24/2020	01/29/2020	U
Toluene	ND	1.00	"	"	"	ZZZ	"	"	U
Ethylbenzene	ND	1.00	"	"	"	ZZZ	"	"	U
Xylenes, total	ND	1.00	"	"	"	ZZZ	"	"	U

Surrogate: 1,2-Dichloroethane-d4	97.5 %	70-130				"	"	"	
Surrogate: Toluene-d8	100 %	70-130				"	"	"	
Surrogate: 4-Bromofluorobenzene	100 %	70-130				"	"	"	

Origins Laboratory, Inc.



*The results in this report apply to the samples analyzed in accordance with the chain of custody document. This analytical report must be reproduced in its entirety.*

Eagle Environmental Consulting, Inc.  
 8000 W 44th Ave  
 Wheat Ridge CO 80033

Martin C Eckert III  
 Project Number: [none]  
 Project: Noble - Gemini B #31-11,12,13,14,25

**MW-13**

**1/23/2020 11:30:00AM**

Analyte	Result	Reporting Limit	Units	Dilution	Batch	Analyst	Prepared	Analyzed	Notes
---------	--------	-----------------	-------	----------	-------	---------	----------	----------	-------

**Origins Laboratory, Inc.**  
**Y001328-13 (Water)**

**BTEX by EPA 8260D**

Benzene	ND	1.00	ug/L	1	B0A2402	ZZZ	01/24/2020	01/29/2020	U
Toluene	ND	1.00	"	"	"	ZZZ	"	"	U
Ethylbenzene	ND	1.00	"	"	"	ZZZ	"	"	U
Xylenes, total	ND	1.00	"	"	"	ZZZ	"	"	U

Surrogate: 1,2-Dichloroethane-d4	100 %	70-130			"	"	"	"	
Surrogate: Toluene-d8	92.7 %	70-130			"	"	"	"	
Surrogate: 4-Bromofluorobenzene	105 %	70-130			"	"	"	"	

Origins Laboratory, Inc.



*The results in this report apply to the samples analyzed in accordance with the chain of custody document. This analytical report must be reproduced in its entirety.*

Eagle Environmental Consulting, Inc.  
 8000 W 44th Ave  
 Wheat Ridge CO 80033

Martin C Eckert III  
 Project Number: [none]  
 Project: Noble - Gemini B #31-11,12,13,14,25

**MW-14**

**1/23/2020 11:40:00AM**

Analyte	Result	Reporting Limit	Units	Dilution	Batch	Analyst	Prepared	Analyzed	Notes
---------	--------	-----------------	-------	----------	-------	---------	----------	----------	-------

**Origins Laboratory, Inc.**  
**Y001328-14 (Water)**

**BTEX by EPA 8260D**

Benzene	ND	1.00	ug/L	1	B0A2402	ZZZ	01/24/2020	01/29/2020	U
Toluene	ND	1.00	"	"	"	ZZZ	"	"	U
Ethylbenzene	ND	1.00	"	"	"	ZZZ	"	"	U
Xylenes, total	ND	1.00	"	"	"	ZZZ	"	"	U

Surrogate: 1,2-Dichloroethane-d4	101 %	70-130			"	"	"	"	
Surrogate: Toluene-d8	95.0 %	70-130			"	"	"	"	
Surrogate: 4-Bromofluorobenzene	102 %	70-130			"	"	"	"	

Origins Laboratory, Inc.



*The results in this report apply to the samples analyzed in accordance with the chain of custody document. This analytical report must be reproduced in its entirety.*

Eagle Environmental Consulting, Inc.  
 8000 W 44th Ave  
 Wheat Ridge CO 80033

Martin C Eckert III  
 Project Number: [none]  
 Project: Noble - Gemini B #31-11,12,13,14,25

**MW-15**  
**1/23/2020 2:11:00PM**

Analyte	Result	Reporting Limit	Units	Dilution	Batch	Analyst	Prepared	Analyzed	Notes
---------	--------	-----------------	-------	----------	-------	---------	----------	----------	-------

**Origins Laboratory, Inc.**  
**Y001328-15 (Water)**

**BTEX by EPA 8260D**

Benzene	ND	1.00	ug/L	1	B0A2402	ZZZ	01/24/2020	01/29/2020	U
Toluene	ND	1.00	"	"	"	ZZZ	"	"	U
Ethylbenzene	ND	1.00	"	"	"	ZZZ	"	"	U
Xylenes, total	ND	1.00	"	"	"	ZZZ	"	"	U

Surrogate: 1,2-Dichloroethane-d4	102 %	70-130			"	"	"	"	
Surrogate: Toluene-d8	96.2 %	70-130			"	"	"	"	
Surrogate: 4-Bromofluorobenzene	101 %	70-130			"	"	"	"	

Origins Laboratory, Inc.



*The results in this report apply to the samples analyzed in accordance with the chain of custody document. This analytical report must be reproduced in its entirety.*

Eagle Environmental Consulting, Inc.  
 8000 W 44th Ave  
 Wheat Ridge CO 80033

Martin C Eckert III  
 Project Number: [none]  
 Project: Noble - Gemini B #31-11,12,13,14,25

**Volatile Organic Compounds by GC/MS SW846 8260D - Quality Control**  
**Origins Laboratory, Inc.**

Analyte	Result	Reporting Limit	Units	Spike Level	Source Result	%REC	%REC Limits	RPD	RPD Limit	Notes
---------	--------	-----------------	-------	-------------	---------------	------	-------------	-----	-----------	-------

Batch B0A2402 - EPA 5030B (Water)

Blank (B0A2402-BLK1)

Prepared: 01/24/2020 Analyzed: 01/28/2020

Benzene	ND	1.00	ug/L							U
Toluene	ND	1.00	"							U
Ethylbenzene	ND	1.00	"							U
Xylenes, total	ND	1.00	"							U
Surrogate: 1,2-Dichloroethane-d4	63		"	62.5		100	70-130			
Surrogate: Toluene-d8	63		"	62.5		101	70-130			
Surrogate: 4-Bromofluorobenzene	61		"	62.5		97.4	70-130			

Origins Laboratory, Inc.



The results in this report apply to the samples analyzed in accordance with the chain of custody document. This analytical report must be reproduced in its entirety.

Eagle Environmental Consulting, Inc.  
 8000 W 44th Ave  
 Wheat Ridge CO 80033

Martin C Eckert III  
 Project Number: [none]  
 Project: Noble - Gemini B #31-11,12,13,14,25

**Volatile Organic Compounds by GC/MS SW846 8260D - Quality Control**  
**Origins Laboratory, Inc.**

Analyte	Result	Reporting Limit	Units	Spike Level	Source Result	%REC	%REC Limits	RPD	RPD Limit	Notes
---------	--------	-----------------	-------	-------------	---------------	------	-------------	-----	-----------	-------

Batch B0A2402 - EPA 5030B (Water)

**LCS (B0A2402-BS1)**

Prepared: 01/24/2020 Analyzed: 01/28/2020

Benzene	54.1	1.00	ug/L	50.0		108	70-130			
Toluene	52.1	1.00	"	50.0		104	70-130			
Ethylbenzene	55.8	1.00	"	50.0		112	70-130			
m,p-Xylene	107	2.00	"	100		107	70-130			
o-Xylene	53.4	1.00	"	50.0		107	70-130			
Surrogate: 1,2-Dichloroethane-d4	58		"	62.5		92.4	70-130			
Surrogate: Toluene-d8	63		"	62.5		101	70-130			
Surrogate: 4-Bromofluorobenzene	62		"	62.5		99.4	70-130			

Origins Laboratory, Inc.



*The results in this report apply to the samples analyzed in accordance with the chain of custody document. This analytical report must be reproduced in its entirety.*

Eagle Environmental Consulting, Inc.  
 8000 W 44th Ave  
 Wheat Ridge CO 80033

Martin C Eckert III  
 Project Number: [none]  
 Project: Noble - Gemini B #31-11,12,13,14,25

**Volatile Organic Compounds by GC/MS SW846 8260D - Quality Control**  
**Origins Laboratory, Inc.**

Analyte	Result	Reporting Limit	Units	Spike Level	Source Result	%REC	%REC Limits	RPD	RPD Limit	Notes
---------	--------	-----------------	-------	-------------	---------------	------	-------------	-----	-----------	-------

Batch B0A2402 - EPA 5030B (Water)

Matrix Spike (B0A2402-MS1)	Source: Y001328-07			Prepared: 01/24/2020 Analyzed: 01/28/2020						
Benzene	41.4	1.00	ug/L	50.0	0.170	82.6	70-130			
Toluene	38.2	1.00	"	50.0	0.470	75.6	70-130			
Ethylbenzene	39.4	1.00	"	50.0	ND	78.9	70-130			
m,p-Xylene	77.9	2.00	"	100	0.880	77.1	70-130			
o-Xylene	42.0	1.00	"	50.0	ND	84.0	70-130			
Surrogate: 1,2-Dichloroethane-d4	66		"	62.5		106	70-130			
Surrogate: Toluene-d8	60		"	62.5		95.8	70-130			
Surrogate: 4-Bromofluorobenzene	65		"	62.5		104	70-130			

Origins Laboratory, Inc.



*The results in this report apply to the samples analyzed in accordance with the chain of custody document. This analytical report must be reproduced in its entirety.*

Eagle Environmental Consulting, Inc.  
 8000 W 44th Ave  
 Wheat Ridge CO 80033

Martin C Eckert III  
 Project Number: [none]  
 Project: Noble - Gemini B #31-11,12,13,14,25

**Volatile Organic Compounds by GC/MS SW846 8260D - Quality Control**  
**Origins Laboratory, Inc.**

Analyte	Result	Reporting Limit	Units	Spike Level	Source Result	%REC	%REC Limits	RPD	RPD Limit	Notes
---------	--------	-----------------	-------	-------------	---------------	------	-------------	-----	-----------	-------

Batch B0A2402 - EPA 5030B (Water)

Matrix Spike Dup (B0A2402-MSD1)	Source: Y001328-07			Prepared: 01/24/2020 Analyzed: 01/28/2020						
Benzene	50.9	1.00	ug/L	50.0	0.170	102	70-130	20.5	20	QR-03
Toluene	47.5	1.00	"	50.0	0.470	94.0	70-130	21.5	20	QR-03
Ethylbenzene	48.4	1.00	"	50.0	ND	96.8	70-130	20.4	20	QR-03
m,p-Xylene	94.8	2.00	"	100	0.880	93.9	70-130	19.5	20	
o-Xylene	51.0	1.00	"	50.0	ND	102	70-130	19.2	20	
Surrogate: 1,2-Dichloroethane-d4	58		"	62.5		92.1	70-130			
Surrogate: Toluene-d8	61		"	62.5		97.5	70-130			
Surrogate: 4-Bromofluorobenzene	64		"	62.5		103	70-130			

Origins Laboratory, Inc.



*The results in this report apply to the samples analyzed in accordance with the chain of custody document. This analytical report must be reproduced in its entirety.*

Eagle Environmental Consulting, Inc.  
8000 W 44th Ave  
Wheat Ridge CO 80033

Martin C Eckert III  
Project Number: [none]  
Project: Noble - Gemini B #31-11,12,13,14,25

---

**Notes and Definitions**

U Sample is Non-Detect.

QR-03 The RPD value for the sample duplicate or MS/MSD was outside of QC acceptance limits due to matrix interference. QC batch accepted based on LCS and/or LCSD recovery and/or RPD values.

ND Analyte NOT DETECTED at or above the reporting limit

RPD Relative Percent Difference

All soil results are reported at a wet weight basis.

Origins Laboratory, Inc.



*The results in this report apply to the samples analyzed in accordance with the chain of custody document. This analytical report must be reproduced in its entirety.*

---

Jen Pellegrini For Noelle Doyle Mathis, President