



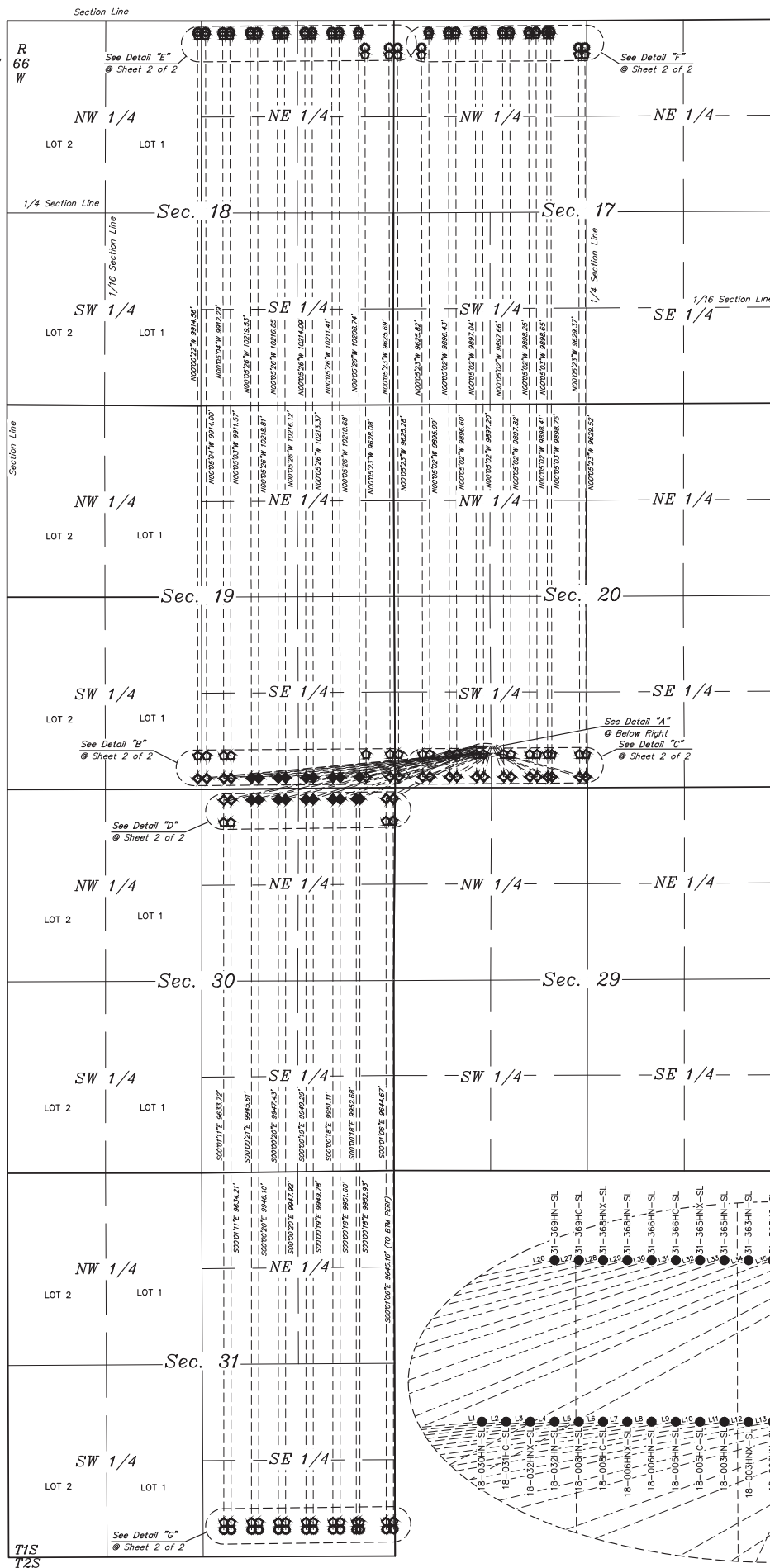
LINE TABLE		
LINE	DIRECTION	LENGTH
L1	S84°42'24"W	3789.26'
L2	S84°33'41"W	3681.69'
L3	S84°15'00"W	3462.54'
L4	S84°07'14"W	3377.90'
L5	S83°39'56"W	3114.15'
L6	S83°30'17"W	3029.58'
L7	S82°57'27"W	2776.09'
L8	S82°45'15"W	2691.65'
L9	S82°01'21"W	2428.66'
L10	S81°45'20"W	2344.39'
L11	S80°49'04"W	2091.96'
L12	S80°21'19"W	2007.97'
L13	S79°10'11"W	1759.62'
L14	S78°42'37"W	1684.83'
L15	S76°15'37"W	1376.63'
L16	S75°11'55"W	1277.59'
L17	S70°28'08"W	976.37'
L18	S68°39'09"W	896.71'
L19	S60°38'07"W	665.72'
L20	S56°36'17"W	593.11'
L21	S61°33'57"E	678.58'
L22	S65°44'43"E	795.01'
L23	S66°57'09"E	834.20'
L24	S73°56'36"E	1180.91'
L25	S74°52'04"E	1251.22'
L26	S77°49'16"W	3540.47'
L27	S77°32'17"W	3457.23'
L28	S76°33'22"W	3198.39'
L29	S76°12'30"W	3115.57'
L30	S75°02'21"W	2867.93'
L31	S74°36'19"W	2785.66'
L32	S73°03'55"W	2530.41'
L33	S72°30'20"W	2448.95'
L34	S70°34'20"W	2206.27'
L35	S69°49'57"W	2125.99'
L36	S67°46'38"W	1932.90'
L37	S67°23'25"W	1900.37'
L38	S62°40'07"W	1584.40'
L39	S61°12'57"W	1508.97'
L40	S24°35'40"W	469.05'
L41	S14°29'21"W	440.51'
L42	S19°21'02"E	452.06'
L43	S28°49'52"E	486.88'
L44	S48°21'42"E	641.99'

Sheet 1 of 2

GREAT WESTERN OPERATING COMPANY

PRairie Le Pad
S 1/2 SW 1/4, SECTION 20, T1S, R66W, 6th P.M.
ADAMS COUNTY, COLORADO

SURVEYED BY	JARED CHRISTOPHER	09-21-18	SCALE
DRAWN BY	B.L.B.	09-21-18	1" = 1000'
MULTI-Well PLAN		FIGURE #5	





LINE TABLE		
LINE	DIRECTION	LENGTH
145	N007°02'E	50.00'
146	N007°02'E	50.00'
147	N007°02'E	50.00'
148	N007°02'E	50.00'
149	N007°02'E	50.00'
150	N007°02'E	50.00'
151	N007°02'E	50.00'
152	N007°02'E	50.00'
153	N007°02'E	50.00'
154	N007°02'E	50.00'
155	N007°02'E	50.00'
156	N007°02'E	50.00'
157	N007°02'E	50.00'
158	N007°02'E	100.00'
159	N007°02'E	100.00'
160	N007°02'E	100.00'
161	N007°02'E	100.00'
162	N007°02'E	100.00'
163	N007°02'E	50.00'
164	N007°02'E	50.00'
165	N007°02'E	50.00'
166	N007°02'E	50.00'
167	N007°02'E	50.00'
168	N007°02'E	50.00'
169	N007°02'E	50.00'
170	N007°02'E	50.00'
171	N007°02'E	50.00'
172	N007°02'E	50.00'
173	N007°02'E	100.00'
174	N007°02'E	100.00'
175	N001°13'4"W	100.00'
176	N001°13'4"W	100.00'
177	N001°13'4"W	100.00'
178	N001°13'4"W	100.00'
179	N001°13'4"W	100.00'
180	N001°13'4"W	100.00'
181	N001°13'4"W	100.00'
182	N001°13'4"W	100.00'
183	N001°13'4"W	100.00'
184	N001°13'4"W	100.00'
185	N001°13'4"W	100.00'
186	N001°13'4"W	100.00'
187	N001°13'4"W	100.00'
188	N001°13'4"W	100.00'