

LEGEND:

 **PROPOSED LOCATION**

 **TRUCK ROUTE**



UELS, LLC

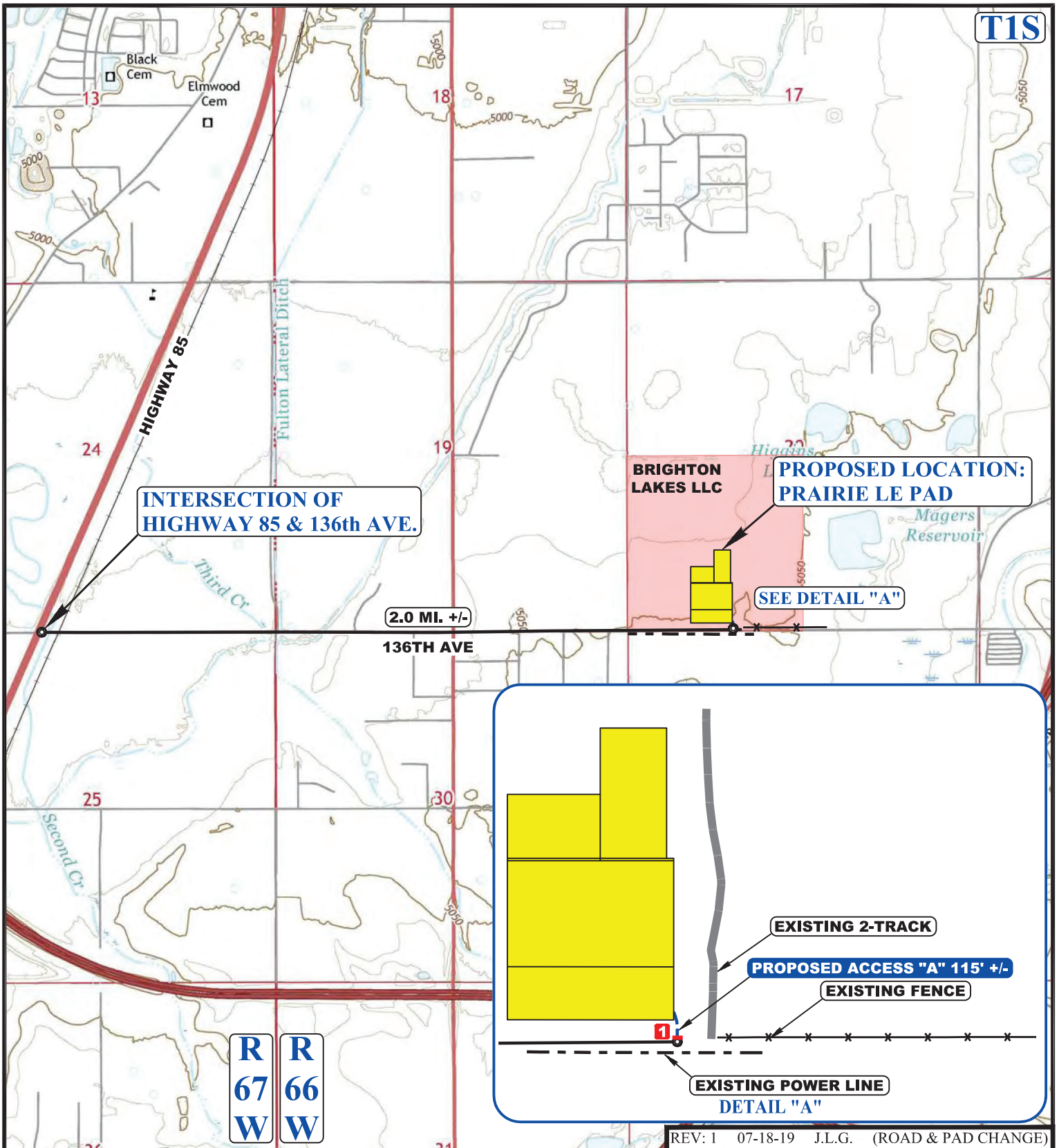
Corporate Office * 85 South 200 East
Vernal, UT 84078 * (435) 789-1017



GREAT WESTERN OPERATING COMPANY

PRAIRIE LE PAD
S 1/2 SW 1/4, SECTION 20, T1S, R66W, 6th P.M.
ADAMS COUNTY, COLORADO

SURVEYED BY	R.W., D.E.	07-17-19	SCALE
DRAWN BY	J.L.G.	09-24-18	1 : 100,000
ACCESS ROAD MAP			TOPO A



NOTE: PARCEL DATA SHOWN HAS BEEN OBTAINED FROM VARIOUS SOURCES AND SHOULD BE USED FOR MAPPING, GRAPHIC AND PLANNING PURPOSES ONLY. NO WARRANTY IS MADE BY UINTAH ENGINEERING AND LAND SURVEYING (UELS) FOR ACCURACY OF THE PARCEL DATA.

LEGEND:

- EXISTING ROAD
- PROPOSED ROAD
- EXISTING POWER LINE
- EXISTING FENCE
- EXISTING 2-TRACK
- 1 INSTALL 18" CULVERT

GREAT WESTERN OPERATING COMPANY

PRAIRIE LE PAD
S 1/2 SW 1/4, SECTION 20, T1S, R66W, 6th P.M.
ADAMS COUNTY, COLORADO

SURVEYED BY	R.W., D.E.	07-17-19	SCALE
DRAWN BY	J.L.G.	09-24-18	1 : 24,000
ACCESS ROAD MAP			TOPO B

UELS, LLC
Corporate Office * 85 South 200 East
Vernal, UT 84078 * (435) 789-1017