

CONFLUENCE RESOURCES

Location: COLORADO Slot: SLOT#09 BUFORD 33-2-2L (770'FSL & 944'FWL, SEC. 34)

Field: WELD COUNTY (NAD83, TRUE NORTH) Well: BUFORD 33-2-2L

Facility: SEC. 34-T01N-R65W Wellbore: BUFORD 33-2-2L PWB

Plot reference wellpath is BUFORD 33-2-2L (REV-A.0) PWP

True vertical depths are referenced to RIG (20.5') (RKB)

Reference wellpath measured depths are referenced to RIG (20.5') (RKB)

RIG (20.5') (RKB) to Mean Sea Level: 5157.5 feet

Mean Sea Level to Mud line (At Slot: SLOT#09 BUFORD 33-2-2L (770'FSL & 944'FWL, SEC. 34)): 0 feet

Offset wellpath MDs are referenced to each path's default MD datum

Grid System: NAD83 / Lambert Colorado SP, Northern Zone (501), US feet

North Reference: True north

Scale: True distance

Coordinates are in feet referenced to Slot

Depths are in feet

Created by: adamkat on 2020-01-27; Database: Denver

Location Information

Facility Name				Grid East (US ft)	Grid North (US ft)	Latitude	Longitude
SEC. 34-T01N-R65W				3236196.141	1244789.256	40°00'8.1000"N	104°39'24.8400"W
Slot	Local N (ft)	Local E (ft)	Grid East (US ft)	Grid North (US ft)	Latitude	Longitude	
SLOT#09 BUFORD 33-2-2L (770'FSL & 944'FWL, SEC. 34)	149.36	201.71	3236386.415	1244940.520	40°00'9.5760"N	104°39'22.2480"W	
RIG (20.5') (RKB) to Mud line (At Slot: SLOT#09 BUFORD 33-2-2L (770'FSL & 944'FWL, SEC. 34))						5157.5ft	
Mean Sea Level to Mud line (At Slot: SLOT#09 BUFORD 33-2-2L (770'FSL & 944'FWL, SEC. 34))						0ft	
RIG (20.5') (RKB) to Mean Sea Level						5157.5ft	

Targets

Name	MD (ft)	TVD (ft)	Local N (ft)	Local E (ft)	Grid East (US ft)	Grid North (US ft)	Latitude	Longitude
SEC 28-T01N-R65W	N/A	1.00	0.00	-176.50	3236209.93	1244938.84	40°00'9.5760"N	104°39'24.5160"W
SEC 33-T01N-R65W	N/A	1.00	0.00	-176.50	3236209.93	1244938.84	40°00'9.5760"N	104°39'24.5160"W
SEC 34-T01N-R65W	N/A	1.00	0.00	-176.50	3236209.93	1244938.84	40°00'9.5760"N	104°39'24.5160"W
BUFORD 33-2-2L BHL REV-1 (470'FSL & 821'FEL, SEC. 28)	17580.83	7328.50	9365.90	-1778.30	3234519.14	1254288.73	40°01'42.1320"N	104°39'45.1080"W
BUFORD 33-2-2L LP REV-1 (470'FSL & 821'FEL, SEC. 33)	7912.62	7340.50	-302.30	-1762.18	3234627.25	1244621.48	40°00'6.5880"N	104°39'44.8920"W

Tie-On Position

MD (ft)	Inc (")	Az (")	TVD (ft)	Local N (ft)	Local E (ft)	Grid East (US ft)	Grid North (US ft)	Latitude	Longitude
20.50	0.000	244.249	20.50	0.00	0.00	3236386.41	1244940.52	40°00'9.5760"N	104°39'22.2480"W

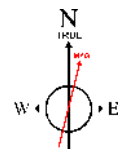
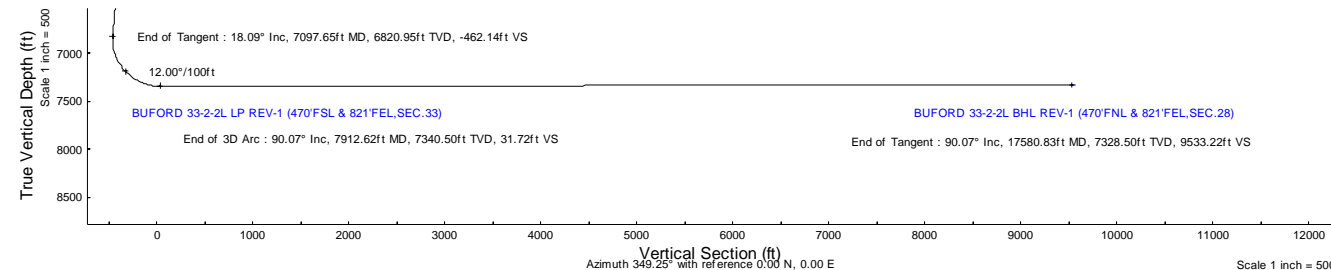
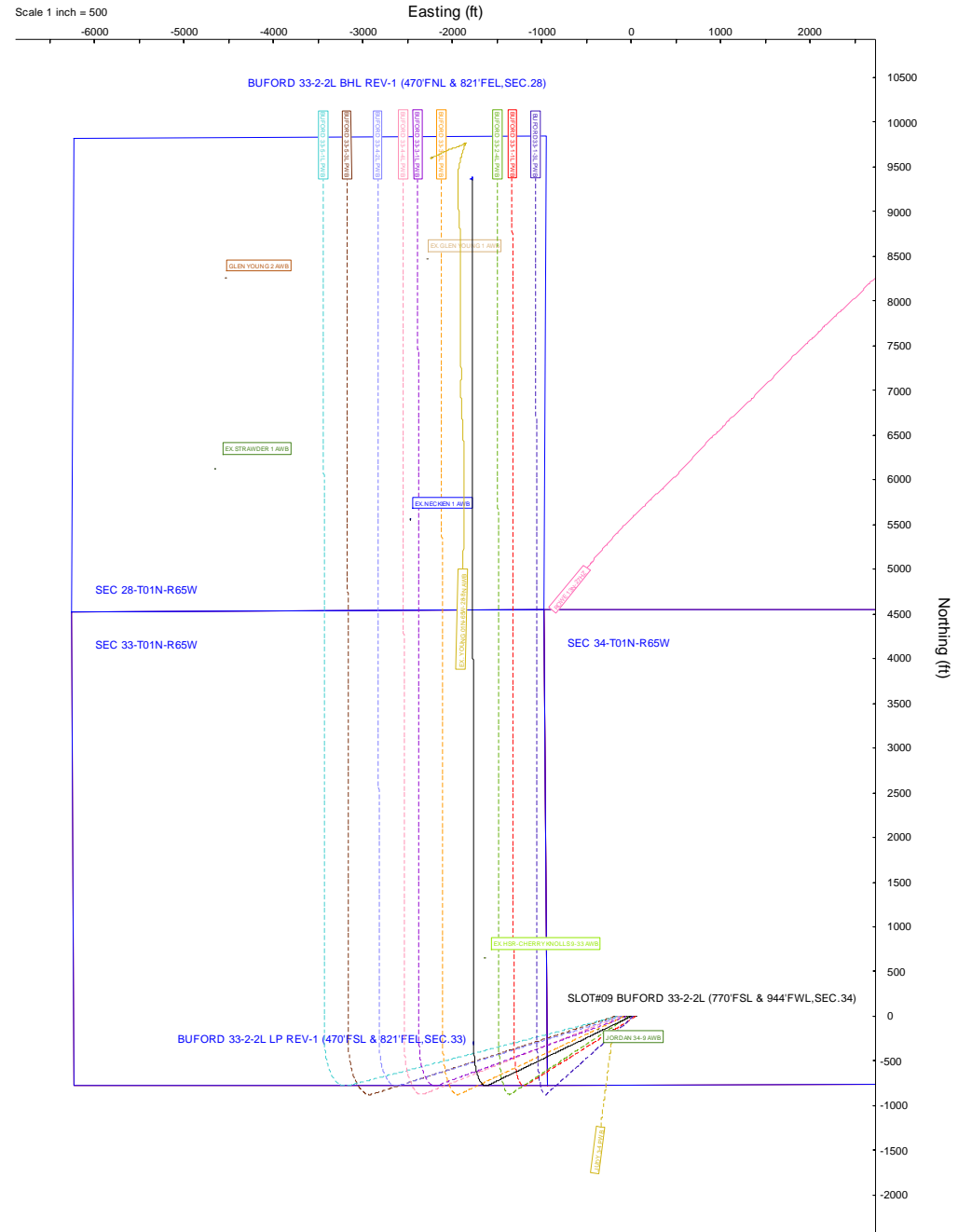
Bottom Hole Location

MD (ft)	Inc (")	Az (")	TVD (ft)	Local N (ft)	Local E (ft)	Grid East (US ft)	Grid North (US ft)	Latitude	Longitude
17580.83	90.071	359.904	7328.50	9365.90	-1778.30	3234519.14	1254288.73	40°01'42.1320"N	104°39'45.1080"W

Well Profile Data

Design Comment	MD (ft)	Inc (")	Az (")	TVD (ft)	Local N (ft)	Local E (ft)	DLS (°/100ft)	VS (ft)
Tie On	20.50	0.000	244.249	20.50	0.00	0.00	0.00	0.00
End of Tangent	900.00	0.000	244.249	900.00	0.00	0.00	0.00	0.00
End of Build	1804.68	18.094	244.249	1789.72	-61.55	-127.59	2.00	-36.67
End of Tangent	7097.65	18.094	244.249	6820.95	-775.74	-1608.18	0.00	-462.14
End of 3D Arc	7912.62	90.071	359.904	7340.50	-302.30	-1762.18	12.00	31.72
End of Tangent	17580.83	90.071	359.904	7328.50	9365.90	-1778.30	0.00	9533.22

Scale 1 inch = 500



BGGM (1900.0 to 2021.0) Dip: 66.28° Field: 51920.9 nT
Magnetic North is 7.87 degrees East of True North (at 1/15/2020)

To correct azimuth from Magnetic to True add 7.87 degrees

Planned Wellpath Report

BUFORD 33-2-2L (REV-A.0) PWP

Page 1 of 10

REFERENCE WELLPATH IDENTIFICATION			
Operator	CONFLUENCE RESOURCES	Well	BUFORD 33-2-2L
Field	WELD COUNTY (NAD83, TRUE NORTH)	API/Legal	
Facility	SEC.34-T01N-R65W	Wellbore	BUFORD 33-2-2L PWB
Slot	SLOT#09 BUFORD 33-2-2L (770'FSL & 944'FWL, SEC.34)		

REPORT SETUP INFORMATION			
Projection System	NAD83 / Lambert Colorado SP, Northern Zone (501), US feet	Software System	WellArchitect® 6.0
North Reference	True	User	Adamkat
Scale	0.999966	Report Generated	1/27/2020 at 1:22:44 PM
Convergence at slot	0.55° East	Database	Denver

WELLPATH LOCATION						
	Local coordinates		Grid coordinates		Geographic coordinates	
	North[ft]	East[ft]	Easting[US ft]	Northing[US ft]	Latitude	Longitude
Slot Location	149.36	201.71	3236386.42	1244940.52	40°00'9.5760"N	104°39'22.2480"W
Facility Reference Pt			3236186.14	1244789.26	40°00'8.1000"N	104°39'24.8400"W
Field Reference Pt			3230456.90	1245096.09	40°00'11.6640"N	104°40'38.4240"W

WELLPATH DATUM			
Calculation method	Minimum curvature	RIG (20.5') (RKB) to Facility Vertical Datum	5157.50ft
Horizontal Reference Pt	Slot	RIG (20.5') (RKB) to Mean Sea Level	5157.50ft
Vertical Reference Pt	RIG (20.5') (RKB)	RIG (20.5') (RKB) to Mud Line at Slot (SLOT#09 BUFORD 33-2-2L (770'FSL & 944'FWL, SEC.34))	5157.50ft
MD Reference Pt	RIG (20.5') (RKB)	Section Origin	N 0.00, E 0.00 ft
Field Vertical Reference	Mean Sea Level	Section Azimuth	349.25°

Planned Wellpath Report

BUFORD 33-2-2L (REV-A.0) PWP

Page 2 of 10

REFERENCE WELLPATH IDENTIFICATION			
Operator	CONFLUENCE RESOURCES	Well	BUFORD 33-2-2L
Field	WELD COUNTY (NAD83, TRUE NORTH)	API/Legal	
Facility	SEC.34-T01N-R65W	Wellbore	BUFORD 33-2-2L PWB
Slot	SLOT#09 BUFORD 33-2-2L (770'FSL & 944'FWL, SEC.34)		

WELLPATH DATA (182 stations) † = interpolated, ‡ = extrapolated station												
MD [ft]	Inclination [°]	Azimuth [°]	TVD [ft]	Vert Sect [ft]	North [ft]	East [ft]	Grid East [US ft]	Grid North [US ft]	Latitude	Longitude	DLS [°/100ft]	Comments
0.00†	0.000	244.249	0.00	0.00	0.00	0.00	3236386.41	1244940.52	40°00'9.5760"N	104°39'22.2480"W	0.00	
20.50	0.000	244.249	20.50	0.00	0.00	0.00	3236386.41	1244940.52	40°00'9.5760"N	104°39'22.2480"W	0.00	Tie On
120.50†	0.000	244.249	120.50	0.00	0.00	0.00	3236386.41	1244940.52	40°00'9.5760"N	104°39'22.2480"W	0.00	
220.50†	0.000	244.249	220.50	0.00	0.00	0.00	3236386.41	1244940.52	40°00'9.5760"N	104°39'22.2480"W	0.00	
320.50†	0.000	244.249	320.50	0.00	0.00	0.00	3236386.41	1244940.52	40°00'9.5760"N	104°39'22.2480"W	0.00	
420.50†	0.000	244.249	420.50	0.00	0.00	0.00	3236386.41	1244940.52	40°00'9.5760"N	104°39'22.2480"W	0.00	
520.50†	0.000	244.249	520.50	0.00	0.00	0.00	3236386.41	1244940.52	40°00'9.5760"N	104°39'22.2480"W	0.00	
620.50†	0.000	244.249	620.50	0.00	0.00	0.00	3236386.41	1244940.52	40°00'9.5760"N	104°39'22.2480"W	0.00	
720.50†	0.000	244.249	720.50	0.00	0.00	0.00	3236386.41	1244940.52	40°00'9.5760"N	104°39'22.2480"W	0.00	
820.50†	0.000	244.249	820.50	0.00	0.00	0.00	3236386.41	1244940.52	40°00'9.5760"N	104°39'22.2480"W	0.00	
900.00	0.000	244.249	900.00	0.00	0.00	0.00	3236386.41	1244940.52	40°00'9.5760"N	104°39'22.2480"W	0.00	End of Tangent
920.50†	0.410	244.249	920.50	-0.02	-0.03	-0.07	3236386.35	1244940.49	40°00'9.5757"N	104°39'22.2488"W	2.00	
1020.50†	2.410	244.249	1020.46	-0.66	-1.10	-2.28	3236384.14	1244939.40	40°00'9.5651"N	104°39'22.2773"W	2.00	
1120.50†	4.410	244.249	1120.28	-2.20	-3.68	-7.64	3236378.81	1244936.76	40°00'9.5396"N	104°39'22.3462"W	2.00	
1220.50†	6.410	244.249	1219.83	-4.64	-7.78	-16.13	3236370.36	1244932.59	40°00'9.4991"N	104°39'22.4553"W	2.00	
1320.50†	8.410	244.249	1318.99	-7.97	-13.38	-27.75	3236358.80	1244926.87	40°00'9.4437"N	104°39'22.6045"W	2.00	
1420.50†	10.410	244.249	1417.64	-12.20	-20.49	-42.47	3236344.14	1244919.63	40°00'9.3735"N	104°39'22.7938"W	2.00	
1520.50†	12.410	244.249	1515.66	-17.32	-29.08	-60.29	3236326.41	1244910.87	40°00'9.2886"N	104°39'23.0227"W	2.00	
1620.50†	14.410	244.249	1612.93	-23.33	-39.16	-81.18	3236305.62	1244900.59	40°00'9.1890"N	104°39'23.2911"W	2.00	
1720.50†	16.410	244.249	1709.33	-30.20	-50.70	-105.11	3236281.80	1244888.82	40°00'9.0750"N	104°39'23.5987"W	2.00	
1804.68	18.094	244.249	1789.72	-36.67	-61.55	-127.59	3236259.42	1244877.76	40°00'8.9678"N	104°39'23.8876"W	2.00	End of Build
1820.50†	18.094	244.249	1804.76	-37.94	-63.68	-132.02	3236255.01	1244875.59	40°00'8.9467"N	104°39'23.9445"W	0.00	
1920.50†	18.094	244.249	1899.81	-45.98	-77.18	-159.99	3236227.17	1244861.83	40°00'8.8133"N	104°39'24.3039"W	0.00	
2020.50†	18.094	244.249	1994.87	-54.01	-90.67	-187.96	3236199.33	1244848.07	40°00'8.6800"N	104°39'24.6634"W	0.00	
2120.50†	18.094	244.249	2089.92	-62.05	-104.16	-215.94	3236171.49	1244834.31	40°00'8.5466"N	104°39'25.0228"W	0.00	
2220.50†	18.094	244.249	2184.98	-70.09	-117.65	-243.91	3236143.64	1244820.55	40°00'8.4133"N	104°39'25.3823"W	0.00	
2320.50†	18.094	244.249	2280.03	-78.13	-131.15	-271.88	3236115.80	1244806.80	40°00'8.2799"N	104°39'25.7417"W	0.00	
2420.50†	18.094	244.249	2375.09	-86.17	-144.64	-299.86	3236087.96	1244793.04	40°00'8.1466"N	104°39'26.1012"W	0.00	
2520.50†	18.094	244.249	2470.14	-94.21	-158.13	-327.83	3236060.12	1244779.28	40°00'8.0132"N	104°39'26.4606"W	0.00	
2620.50†	18.094	244.249	2565.20	-102.25	-171.63	-355.80	3236032.28	1244765.52	40°00'7.8799"N	104°39'26.8201"W	0.00	

Planned Wellpath Report

BUFORD 33-2-2L (REV-A.0) PWP

Page 3 of 10

REFERENCE WELLPATH IDENTIFICATION			
Operator	CONFLUENCE RESOURCES	Well	BUFORD 33-2-2L
Field	WELD COUNTY (NAD83, TRUE NORTH)	API/Legal	
Facility	SEC.34-T01N-R65W	Wellbore	BUFORD 33-2-2L PWB
Slot	SLOT#09 BUFORD 33-2-2L (770'FSL & 944'FWL, SEC.34)		

WELLPATH DATA (182 stations) † = interpolated, ‡ = extrapolated station												
MD [ft]	Inclination [°]	Azimuth [°]	TVD [ft]	Vert Sect [ft]	North [ft]	East [ft]	Grid East [US ft]	Grid North [US ft]	Latitude	Longitude	DLS [°/100ft]	Comments
2720.50†	18.094	244.249	2660.25	-110.28	-185.12	-383.77	3236004.43	1244751.76	40°00'7.7466"N	104°39'27.1795"W	0.00	
2820.50†	18.094	244.249	2755.31	-118.32	-198.61	-411.75	3235976.59	1244738.00	40°00'7.6132"N	104°39'27.5389"W	0.00	
2920.50†	18.094	244.249	2850.36	-126.36	-212.11	-439.72	3235948.75	1244724.25	40°00'7.4799"N	104°39'27.8984"W	0.00	
3020.50†	18.094	244.249	2945.42	-134.40	-225.60	-467.69	3235920.91	1244710.49	40°00'7.3465"N	104°39'28.2578"W	0.00	
3120.50†	18.094	244.249	3040.47	-142.44	-239.09	-495.66	3235893.07	1244696.73	40°00'7.2132"N	104°39'28.6173"W	0.00	
3220.50†	18.094	244.249	3135.53	-150.48	-252.59	-523.64	3235865.22	1244682.97	40°00'7.0798"N	104°39'28.9767"W	0.00	
3320.50†	18.094	244.249	3230.58	-158.51	-266.08	-551.61	3235837.38	1244669.21	40°00'6.9465"N	104°39'29.3362"W	0.00	
3420.50†	18.094	244.249	3325.64	-166.55	-279.57	-579.58	3235809.54	1244655.46	40°00'6.8131"N	104°39'29.6956"W	0.00	
3520.50†	18.094	244.249	3420.69	-174.59	-293.07	-607.55	3235781.70	1244641.70	40°00'6.6798"N	104°39'30.0551"W	0.00	
3620.50†	18.094	244.249	3515.75	-182.63	-306.56	-635.53	3235753.86	1244627.94	40°00'6.5464"N	104°39'30.4145"W	0.00	
3720.50†	18.094	244.249	3610.80	-190.67	-320.05	-663.50	3235726.01	1244614.18	40°00'6.4131"N	104°39'30.7740"W	0.00	
3820.50†	18.094	244.249	3705.86	-198.71	-333.55	-691.47	3235698.17	1244600.42	40°00'6.2797"N	104°39'31.1334"W	0.00	
3920.50†	18.094	244.249	3800.91	-206.74	-347.04	-719.45	3235670.33	1244586.66	40°00'6.1464"N	104°39'31.4928"W	0.00	
4020.50†	18.094	244.249	3895.97	-214.78	-360.53	-747.42	3235642.49	1244572.91	40°00'6.0130"N	104°39'31.8523"W	0.00	
4120.50†	18.094	244.249	3991.02	-222.82	-374.02	-775.39	3235614.65	1244559.15	40°00'5.8796"N	104°39'32.2117"W	0.00	
4220.50†	18.094	244.249	4086.08	-230.86	-387.52	-803.36	3235586.80	1244545.39	40°00'5.7463"N	104°39'32.5712"W	0.00	
4320.50†	18.094	244.249	4181.13	-238.90	-401.01	-831.34	3235558.96	1244531.63	40°00'5.6129"N	104°39'32.9306"W	0.00	
4420.50†	18.094	244.249	4276.19	-246.94	-414.50	-859.31	3235531.12	1244517.87	40°00'5.4796"N	104°39'33.2900"W	0.00	
4520.50†	18.094	244.249	4371.24	-254.97	-428.00	-887.28	3235503.28	1244504.11	40°00'5.3462"N	104°39'33.6495"W	0.00	
4620.50†	18.094	244.249	4466.30	-263.01	-441.49	-915.25	3235475.44	1244490.36	40°00'5.2129"N	104°39'34.0089"W	0.00	
4720.50†	18.094	244.249	4561.35	-271.05	-454.98	-943.23	3235447.59	1244476.60	40°00'5.0795"N	104°39'34.3684"W	0.00	
4820.50†	18.094	244.249	4656.41	-279.09	-468.48	-971.20	3235419.75	1244462.84	40°00'4.9462"N	104°39'34.7278"W	0.00	
4920.50†	18.094	244.249	4751.46	-287.13	-481.97	-999.17	3235391.91	1244449.08	40°00'4.8128"N	104°39'35.0872"W	0.00	
5020.50†	18.094	244.249	4846.52	-295.17	-495.46	-1027.14	3235364.07	1244435.32	40°00'4.6795"N	104°39'35.4467"W	0.00	
5120.50†	18.094	244.249	4941.57	-303.21	-508.96	-1055.12	3235336.23	1244421.57	40°00'4.5461"N	104°39'35.8061"W	0.00	
5220.50†	18.094	244.249	5036.63	-311.24	-522.45	-1083.09	3235308.38	1244407.81	40°00'4.4128"N	104°39'36.1656"W	0.00	
5320.50†	18.094	244.249	5131.68	-319.28	-535.94	-1111.06	3235280.54	1244394.05	40°00'4.2794"N	104°39'36.5250"W	0.00	
5420.50†	18.094	244.249	5226.74	-327.32	-549.44	-1139.03	3235252.70	1244380.29	40°00'4.1460"N	104°39'36.8844"W	0.00	
5520.50†	18.094	244.249	5321.79	-335.36	-562.93	-1167.01	3235224.86	1244366.53	40°00'4.0127"N	104°39'37.2439"W	0.00	
5620.50†	18.094	244.249	5416.85	-343.40	-576.42	-1194.98	3235197.02	1244352.77	40°00'3.8793"N	104°39'37.6033"W	0.00	

Planned Wellpath Report

BUFORD 33-2-2L (REV-A.0) PWP

Page 4 of 10

REFERENCE WELLPATH IDENTIFICATION			
Operator	CONFLUENCE RESOURCES	Well	BUFORD 33-2-2L
Field	WELD COUNTY (NAD83, TRUE NORTH)	API/Legal	
Facility	SEC.34-T01N-R65W	Wellbore	BUFORD 33-2-2L PWB
Slot	SLOT#09 BUFORD 33-2-2L (770'FSL & 944'FWL, SEC.34)		

WELLPATH DATA (182 stations) † = interpolated, ‡ = extrapolated station												
MD [ft]	Inclination [°]	Azimuth [°]	TVD [ft]	Vert Sect [ft]	North [ft]	East [ft]	Grid East [US ft]	Grid North [US ft]	Latitude	Longitude	DLS [°/100ft]	Comments
5720.50†	18.094	244.249	5511.90	-351.44	-589.92	-1222.95	3235169.17	1244339.02	40°00'3.7460"N	104°39'37.9627"W	0.00	
5820.50†	18.094	244.249	5606.96	-359.47	-603.41	-1250.93	3235141.33	1244325.26	40°00'3.6126"N	104°39'38.3222"W	0.00	
5920.50†	18.094	244.249	5702.01	-367.51	-616.90	-1278.90	3235113.49	1244311.50	40°00'3.4793"N	104°39'38.6816"W	0.00	
6020.50†	18.094	244.249	5797.07	-375.55	-630.40	-1306.87	3235085.65	1244297.74	40°00'3.3459"N	104°39'39.0410"W	0.00	
6120.50†	18.094	244.249	5892.12	-383.59	-643.89	-1334.84	3235057.81	1244283.98	40°00'3.2125"N	104°39'39.4005"W	0.00	
6220.50†	18.094	244.249	5987.18	-391.63	-657.38	-1362.82	3235029.96	1244270.22	40°00'3.0792"N	104°39'39.7599"W	0.00	
6320.50†	18.094	244.249	6082.23	-399.67	-670.87	-1390.79	3235002.12	1244256.47	40°00'2.9458"N	104°39'40.1193"W	0.00	
6420.50†	18.094	244.249	6177.29	-407.70	-684.37	-1418.76	3234974.28	1244242.71	40°00'2.8125"N	104°39'40.4788"W	0.00	
6520.50†	18.094	244.249	6272.34	-415.74	-697.86	-1446.73	3234946.44	1244228.95	40°00'2.6791"N	104°39'40.8382"W	0.00	
6620.50†	18.094	244.249	6367.40	-423.78	-711.35	-1474.71	3234918.60	1244215.19	40°00'2.5457"N	104°39'41.1976"W	0.00	
6720.50†	18.094	244.249	6462.45	-431.82	-724.85	-1502.68	3234890.75	1244201.43	40°00'2.4124"N	104°39'41.5571"W	0.00	
6820.50†	18.094	244.249	6557.51	-439.86	-738.34	-1530.65	3234862.91	1244187.67	40°00'2.2790"N	104°39'41.9165"W	0.00	
6920.50†	18.094	244.249	6652.56	-447.90	-751.83	-1558.62	3234835.07	1244173.92	40°00'2.1457"N	104°39'42.2759"W	0.00	
7020.50†	18.094	244.249	6747.62	-455.93	-765.33	-1586.60	3234807.23	1244160.16	40°00'2.0123"N	104°39'42.6354"W	0.00	
7097.65	18.094	244.249	6820.95	-462.14	-775.74	-1608.18	3234785.75	1244149.54	40°00'1.9094"N	104°39'42.9127"W	0.00	End of Tangent
7120.50†	17.132	252.746	6842.74	-463.44	-778.28	-1614.59	3234779.36	1244146.94	40°00'1.8843"N	104°39'42.9950"W	12.00	
7220.50†	17.814	293.432	6938.47	-456.49	-776.56	-1642.79	3234751.14	1244148.39	40°00'1.9013"N	104°39'43.3575"W	12.00	
7320.50†	24.923	320.543	7031.76	-429.31	-754.12	-1670.32	3234723.41	1244170.56	40°00'2.1229"N	104°39'43.7112"W	12.00	
7420.50†	34.708	334.715	7118.52	-383.10	-711.96	-1695.96	3234697.36	1244212.48	40°00'2.5396"N	104°39'44.0407"W	12.00	
7520.50†	45.467	343.037	7194.97	-319.88	-651.91	-1718.60	3234674.15	1244272.31	40°00'3.1331"N	104°39'44.3317"W	12.00	
7620.50†	56.638	348.700	7257.76	-242.41	-576.59	-1737.25	3234654.79	1244347.45	40°00'3.8774"N	104°39'44.5714"W	12.00	
7720.50†	68.007	353.051	7304.15	-154.06	-489.30	-1751.10	3234640.12	1244434.60	40°00'4.7400"N	104°39'44.7494"W	12.00	
7820.50†	79.473	356.746	7332.12	-58.72	-393.85	-1759.53	3234630.78	1244529.96	40°00'5.6833"N	104°39'44.8578"W	12.00	
7912.62	90.071	359.904	7340.50	31.72	-302.30	-1762.18	3234627.25	1244621.48	40°00'6.5880"N	104°39'44.8920"W	12.00	End of 3D Arc
7920.50†	90.071	359.904	7340.49	39.47	-294.41	-1762.20	3234627.16	1244629.37	40°00'6.6659"N	104°39'44.8922"W	0.00	
8020.50†	90.071	359.904	7340.37	137.75	-194.41	-1762.36	3234626.05	1244729.36	40°00'7.6541"N	104°39'44.8944"W	0.00	
8120.50†	90.071	359.904	7340.24	236.02	-94.41	-1762.53	3234624.93	1244829.35	40°00'8.6424"N	104°39'44.8966"W	0.00	
8220.50†	90.071	359.904	7340.12	334.30	5.59	-1762.70	3234623.81	1244929.34	40°00'9.6306"N	104°39'44.8989"W	0.00	
8320.50†	90.071	359.904	7339.99	432.57	105.59	-1762.86	3234622.69	1245029.33	40°00'10.6188"N	104°39'44.9011"W	0.00	
8420.50†	90.071	359.904	7339.87	530.85	205.59	-1763.03	3234621.57	1245129.32	40°00'11.6071"N	104°39'44.9033"W	0.00	

Planned Wellpath Report

BUFORD 33-2-2L (REV-A.0) PWP

Page 5 of 10

REFERENCE WELLPATH IDENTIFICATION			
Operator	CONFLUENCE RESOURCES	Well	BUFORD 33-2-2L
Field	WELD COUNTY (NAD83, TRUE NORTH)	API/Legal	
Facility	SEC.34-T01N-R65W	Wellbore	BUFORD 33-2-2L PWB
Slot	SLOT#09 BUFORD 33-2-2L (770'FSL & 944'FWL, SEC.34)		

WELLPATH DATA (182 stations) † = interpolated, ‡ = extrapolated station												
MD [ft]	Inclination [°]	Azimuth [°]	TVD [ft]	Vert Sect [ft]	North [ft]	East [ft]	Grid East [US ft]	Grid North [US ft]	Latitude	Longitude	DLS [°/100ft]	Comments
8520.50†	90.071	359.904	7339.75	629.13	305.59	-1763.20	3234620.45	1245229.31	40°00'12.5953"N	104°39'44.9056"W	0.00	
8620.50†	90.071	359.904	7339.62	727.40	405.59	-1763.36	3234619.34	1245329.30	40°00'13.5835"N	104°39'44.9078"W	0.00	
8720.50†	90.071	359.904	7339.50	825.68	505.59	-1763.53	3234618.22	1245429.29	40°00'14.5718"N	104°39'44.9100"W	0.00	
8820.50†	90.071	359.904	7339.37	923.95	605.59	-1763.70	3234617.10	1245529.28	40°00'15.5600"N	104°39'44.9123"W	0.00	
8920.50†	90.071	359.904	7339.25	1022.23	705.59	-1763.86	3234615.98	1245629.27	40°00'16.5482"N	104°39'44.9145"W	0.00	
9020.50†	90.071	359.904	7339.12	1120.50	805.59	-1764.03	3234614.86	1245729.26	40°00'17.5364"N	104°39'44.9167"W	0.00	
9120.50†	90.071	359.904	7339.00	1218.78	905.59	-1764.20	3234613.75	1245829.25	40°00'18.5247"N	104°39'44.9190"W	0.00	
9220.50†	90.071	359.904	7338.88	1317.05	1005.59	-1764.36	3234612.63	1245929.24	40°00'19.5129"N	104°39'44.9212"W	0.00	
9320.50†	90.071	359.904	7338.75	1415.33	1105.59	-1764.53	3234611.51	1246029.23	40°00'20.5011"N	104°39'44.9234"W	0.00	
9420.50†	90.071	359.904	7338.63	1513.61	1205.59	-1764.70	3234610.39	1246129.22	40°00'21.4894"N	104°39'44.9257"W	0.00	
9520.50†	90.071	359.904	7338.50	1611.88	1305.59	-1764.86	3234609.27	1246229.21	40°00'22.4776"N	104°39'44.9279"W	0.00	
9620.50†	90.071	359.904	7338.38	1710.16	1405.59	-1765.03	3234608.15	1246329.20	40°00'23.4658"N	104°39'44.9301"W	0.00	
9720.50†	90.071	359.904	7338.26	1808.43	1505.58	-1765.20	3234607.04	1246429.19	40°00'24.4540"N	104°39'44.9324"W	0.00	
9820.50†	90.071	359.904	7338.13	1906.71	1605.58	-1765.36	3234605.92	1246529.18	40°00'25.4423"N	104°39'44.9346"W	0.00	
9920.50†	90.071	359.904	7338.01	2004.98	1705.58	-1765.53	3234604.80	1246629.17	40°00'26.4305"N	104°39'44.9368"W	0.00	
10020.50†	90.071	359.904	7337.88	2103.26	1805.58	-1765.70	3234603.68	1246729.16	40°00'27.4187"N	104°39'44.9391"W	0.00	
10120.50†	90.071	359.904	7337.76	2201.54	1905.58	-1765.86	3234602.56	1246829.15	40°00'28.4070"N	104°39'44.9413"W	0.00	
10220.50†	90.071	359.904	7337.64	2299.81	2005.58	-1766.03	3234601.44	1246929.14	40°00'29.3952"N	104°39'44.9435"W	0.00	
10320.50†	90.071	359.904	7337.51	2398.09	2105.58	-1766.20	3234600.33	1247029.13	40°00'30.3834"N	104°39'44.9458"W	0.00	
10420.50†	90.071	359.904	7337.39	2496.36	2205.58	-1766.36	3234599.21	1247129.12	40°00'31.3716"N	104°39'44.9480"W	0.00	
10520.50†	90.071	359.904	7337.26	2594.64	2305.58	-1766.53	3234598.09	1247229.11	40°00'32.3599"N	104°39'44.9502"W	0.00	
10620.50†	90.071	359.904	7337.14	2692.91	2405.58	-1766.70	3234596.97	1247329.10	40°00'33.3481"N	104°39'44.9525"W	0.00	
10720.50†	90.071	359.904	7337.01	2791.19	2505.58	-1766.86	3234595.85	1247429.09	40°00'34.3363"N	104°39'44.9547"W	0.00	
10820.50†	90.071	359.904	7336.89	2889.47	2605.58	-1767.03	3234594.74	1247529.08	40°00'35.3246"N	104°39'44.9569"W	0.00	
10920.50†	90.071	359.904	7336.77	2987.74	2705.58	-1767.20	3234593.62	1247629.07	40°00'36.3128"N	104°39'44.9592"W	0.00	
11020.50†	90.071	359.904	7336.64	3086.02	2805.58	-1767.36	3234592.50	1247729.06	40°00'37.3010"N	104°39'44.9614"W	0.00	
11120.50†	90.071	359.904	7336.52	3184.29	2905.58	-1767.53	3234591.38	1247829.05	40°00'38.2893"N	104°39'44.9636"W	0.00	
11220.50†	90.071	359.904	7336.39	3282.57	3005.58	-1767.70	3234590.26	1247929.04	40°00'39.2775"N	104°39'44.9659"W	0.00	
11320.50†	90.071	359.904	7336.27	3380.84	3105.58	-1767.86	3234589.14	1248029.03	40°00'40.2657"N	104°39'44.9681"W	0.00	
11420.50†	90.071	359.904	7336.15	3479.12	3205.58	-1768.03	3234588.03	1248129.02	40°00'41.2539"N	104°39'44.9704"W	0.00	

Planned Wellpath Report

BUFORD 33-2-2L (REV-A.0) PWP

Page 6 of 10

REFERENCE WELLPATH IDENTIFICATION			
Operator	CONFLUENCE RESOURCES	Well	BUFORD 33-2-2L
Field	WELD COUNTY (NAD83, TRUE NORTH)	API/Legal	
Facility	SEC.34-T01N-R65W	Wellbore	BUFORD 33-2-2L PWB
Slot	SLOT#09 BUFORD 33-2-2L (770'FSL & 944'FWL, SEC.34)		

WELLPATH DATA (182 stations) † = interpolated, ‡ = extrapolated station												
MD [ft]	Inclination [°]	Azimuth [°]	TVD [ft]	Vert Sect [ft]	North [ft]	East [ft]	Grid East [US ft]	Grid North [US ft]	Latitude	Longitude	DLS ["/100ft]	Comments
11520.50†	90.071	359.904	7336.02	3577.40	3305.58	-1768.20	3234586.91	1248229.01	40°00'42.2422"N	104°39'44.9726"W	0.00	
11620.50†	90.071	359.904	7335.90	3675.67	3405.58	-1768.36	3234585.79	1248329.00	40°00'43.2304"N	104°39'44.9748"W	0.00	
11720.50†	90.071	359.904	7335.77	3773.95	3505.58	-1768.53	3234584.67	1248428.99	40°00'44.2186"N	104°39'44.9771"W	0.00	
11820.50†	90.071	359.904	7335.65	3872.22	3605.58	-1768.70	3234583.55	1248528.98	40°00'45.2069"N	104°39'44.9793"W	0.00	
11920.50†	90.071	359.904	7335.53	3970.50	3705.58	-1768.86	3234582.43	1248628.97	40°00'46.1951"N	104°39'44.9815"W	0.00	
12020.50†	90.071	359.904	7335.40	4068.77	3805.58	-1769.03	3234581.32	1248728.96	40°00'47.1833"N	104°39'44.9838"W	0.00	
12120.50†	90.071	359.904	7335.28	4167.05	3905.58	-1769.20	3234580.20	1248828.95	40°00'48.1715"N	104°39'44.9860"W	0.00	
12220.50†	90.071	359.904	7335.15	4265.33	4005.58	-1769.36	3234579.08	1248928.94	40°00'49.1598"N	104°39'44.9882"W	0.00	
12320.50†	90.071	359.904	7335.03	4363.60	4105.58	-1769.53	3234577.96	1249028.93	40°00'50.1480"N	104°39'44.9905"W	0.00	
12420.50†	90.071	359.904	7334.90	4461.88	4205.58	-1769.70	3234576.84	1249128.92	40°00'51.1362"N	104°39'44.9927"W	0.00	
12520.50†	90.071	359.904	7334.78	4560.15	4305.58	-1769.86	3234575.73	1249228.91	40°00'52.1245"N	104°39'44.9949"W	0.00	
12620.50†	90.071	359.904	7334.66	4658.43	4405.58	-1770.03	3234574.61	1249328.90	40°00'53.1127"N	104°39'44.9972"W	0.00	
12720.50†	90.071	359.904	7334.53	4756.70	4505.58	-1770.20	3234573.49	1249428.89	40°00'54.1009"N	104°39'44.9994"W	0.00	
12820.50†	90.071	359.904	7334.41	4854.98	4605.58	-1770.36	3234572.37	1249528.88	40°00'55.0891"N	104°39'45.0016"W	0.00	
12920.50†	90.071	359.904	7334.28	4953.25	4705.58	-1770.53	3234571.25	1249628.87	40°00'56.0774"N	104°39'45.0039"W	0.00	
13020.50†	90.071	359.904	7334.16	5051.53	4805.58	-1770.70	3234570.13	1249728.86	40°00'57.0656"N	104°39'45.0061"W	0.00	
13120.50†	90.071	359.904	7334.04	5149.81	4905.58	-1770.86	3234569.02	1249828.85	40°00'58.0538"N	104°39'45.0083"W	0.00	
13220.50†	90.071	359.904	7333.91	5248.08	5005.58	-1771.03	3234567.90	1249928.84	40°00'59.0420"N	104°39'45.0106"W	0.00	
13320.50†	90.071	359.904	7333.79	5346.36	5105.58	-1771.20	3234566.78	1250028.83	40°01'0.0303"N	104°39'45.0128"W	0.00	
13420.50†	90.071	359.904	7333.66	5444.63	5205.58	-1771.36	3234565.66	1250128.82	40°01'1.0185"N	104°39'45.0150"W	0.00	
13520.50†	90.071	359.904	7333.54	5542.91	5305.58	-1771.53	3234564.54	1250228.81	40°01'2.0067"N	104°39'45.0173"W	0.00	
13620.50†	90.071	359.904	7333.42	5641.18	5405.58	-1771.70	3234563.42	1250328.80	40°01'2.9950"N	104°39'45.0195"W	0.00	
13720.50†	90.071	359.904	7333.29	5739.46	5505.58	-1771.86	3234562.31	1250428.79	40°01'3.9832"N	104°39'45.0217"W	0.00	
13820.50†	90.071	359.904	7333.17	5837.74	5605.58	-1772.03	3234561.19	1250528.78	40°01'4.9714"N	104°39'45.0240"W	0.00	
13920.50†	90.071	359.904	7333.04	5936.01	5705.58	-1772.20	3234560.07	1250628.77	40°01'5.9596"N	104°39'45.0262"W	0.00	
14020.50†	90.071	359.904	7332.92	6034.29	5805.58	-1772.36	3234558.95	1250728.76	40°01'6.9479"N	104°39'45.0284"W	0.00	
14120.50†	90.071	359.904	7332.79	6132.56	5905.58	-1772.53	3234557.83	1250828.75	40°01'7.9361"N	104°39'45.0307"W	0.00	
14220.50†	90.071	359.904	7332.67	6230.84	6005.58	-1772.70	3234556.72	1250928.74	40°01'8.9243"N	104°39'45.0329"W	0.00	
14320.50†	90.071	359.904	7332.55	6329.11	6105.58	-1772.86	3234555.60	1251028.73	40°01'9.9126"N	104°39'45.0351"W	0.00	
14420.50†	90.071	359.904	7332.42	6427.39	6205.57	-1773.03	3234554.48	1251128.72	40°01'10.9008"N	104°39'45.0374"W	0.00	

Planned Wellpath Report

BUFORD 33-2-2L (REV-A.0) PWP

Page 7 of 10

REFERENCE WELLPATH IDENTIFICATION			
Operator	CONFLUENCE RESOURCES	Well	BUFORD 33-2-2L
Field	WELD COUNTY (NAD83, TRUE NORTH)	API/Legal	
Facility	SEC.34-T01N-R65W	Wellbore	BUFORD 33-2-2L PWB
Slot	SLOT#09 BUFORD 33-2-2L (770'FSL & 944'FWL, SEC.34)		

WELLPATH DATA (182 stations) † = interpolated, ‡ = extrapolated station												
MD [ft]	Inclination [°]	Azimuth [°]	TVD [ft]	Vert Sect [ft]	North [ft]	East [ft]	Grid East [US ft]	Grid North [US ft]	Latitude	Longitude	DLS ["/100ft]	Comments
14520.50†	90.071	359.904	7332.30	6525.67	6305.57	-1773.20	3234553.36	1251228.71	40°01'11.8890"N	104°39'45.0396"W	0.00	
14620.50†	90.071	359.904	7332.17	6623.94	6405.57	-1773.36	3234552.24	1251328.70	40°01'12.8772"N	104°39'45.0418"W	0.00	
14720.50†	90.071	359.904	7332.05	6722.22	6505.57	-1773.53	3234551.12	1251428.69	40°01'13.8655"N	104°39'45.0441"W	0.00	
14820.50†	90.071	359.904	7331.93	6820.49	6605.57	-1773.70	3234550.01	1251528.68	40°01'14.8537"N	104°39'45.0463"W	0.00	
14920.50†	90.071	359.904	7331.80	6918.77	6705.57	-1773.86	3234548.89	1251628.67	40°01'15.8419"N	104°39'45.0485"W	0.00	
15020.50†	90.071	359.904	7331.68	7017.04	6805.57	-1774.03	3234547.77	1251728.66	40°01'16.8301"N	104°39'45.0508"W	0.00	
15120.50†	90.071	359.904	7331.55	7115.32	6905.57	-1774.20	3234546.65	1251828.65	40°01'17.8184"N	104°39'45.0530"W	0.00	
15220.50†	90.071	359.904	7331.43	7213.60	7005.57	-1774.36	3234545.53	1251928.64	40°01'18.8066"N	104°39'45.0553"W	0.00	
15320.50†	90.071	359.904	7331.31	7311.87	7105.57	-1774.53	3234544.42	1252028.63	40°01'19.7948"N	104°39'45.0575"W	0.00	
15420.50†	90.071	359.904	7331.18	7410.15	7205.57	-1774.70	3234543.30	1252128.62	40°01'20.7831"N	104°39'45.0597"W	0.00	
15520.50†	90.071	359.904	7331.06	7508.42	7305.57	-1774.86	3234542.18	1252228.61	40°01'21.7713"N	104°39'45.0620"W	0.00	
15620.50†	90.071	359.904	7330.93	7606.70	7405.57	-1775.03	3234541.06	1252328.60	40°01'22.7595"N	104°39'45.0642"W	0.00	
15720.50†	90.071	359.904	7330.81	7704.97	7505.57	-1775.20	3234539.94	1252428.59	40°01'23.7477"N	104°39'45.0664"W	0.00	
15820.50†	90.071	359.904	7330.68	7803.25	7605.57	-1775.36	3234538.82	1252528.58	40°01'24.7360"N	104°39'45.0687"W	0.00	
15920.50†	90.071	359.904	7330.56	7901.53	7705.57	-1775.53	3234537.71	1252628.57	40°01'25.7242"N	104°39'45.0709"W	0.00	
16020.50†	90.071	359.904	7330.44	7999.80	7805.57	-1775.70	3234536.59	1252728.56	40°01'26.7124"N	104°39'45.0731"W	0.00	
16120.50†	90.071	359.904	7330.31	8098.08	7905.57	-1775.86	3234535.47	1252828.55	40°01'27.7007"N	104°39'45.0754"W	0.00	
16220.50†	90.071	359.904	7330.19	8196.35	8005.57	-1776.03	3234534.35	1252928.54	40°01'28.6889"N	104°39'45.0776"W	0.00	
16320.50†	90.071	359.904	7330.06	8294.63	8105.57	-1776.20	3234533.23	1253028.53	40°01'29.6771"N	104°39'45.0798"W	0.00	
16420.50†	90.071	359.904	7329.94	8392.90	8205.57	-1776.36	3234532.11	1253128.52	40°01'30.6653"N	104°39'45.0821"W	0.00	
16520.50†	90.071	359.904	7329.82	8491.18	8305.57	-1776.53	3234531.00	1253228.51	40°01'31.6536"N	104°39'45.0843"W	0.00	
16620.50†	90.071	359.904	7329.69	8589.45	8405.57	-1776.70	3234529.88	1253328.50	40°01'32.6418"N	104°39'45.0865"W	0.00	
16720.50†	90.071	359.904	7329.57	8687.73	8505.57	-1776.86	3234528.76	1253428.49	40°01'33.6300"N	104°39'45.0888"W	0.00	
16820.50†	90.071	359.904	7329.44	8786.01	8605.57	-1777.03	3234527.64	1253528.48	40°01'34.6182"N	104°39'45.0910"W	0.00	
16920.50†	90.071	359.904	7329.32	8884.28	8705.57	-1777.20	3234526.52	1253628.47	40°01'35.6065"N	104°39'45.0932"W	0.00	
17020.50†	90.071	359.904	7329.20	8982.56	8805.57	-1777.36	3234525.41	1253728.46	40°01'36.5947"N	104°39'45.0955"W	0.00	
17120.50†	90.071	359.904	7329.07	9080.83	8905.57	-1777.53	3234524.29	1253828.45	40°01'37.5829"N	104°39'45.0977"W	0.00	
17220.50†	90.071	359.904	7328.95	9179.11	9005.57	-1777.70	3234523.17	1253928.44	40°01'38.5712"N	104°39'45.0999"W	0.00	
17320.50†	90.071	359.904	7328.82	9277.38	9105.57	-1777.86	3234522.05	1254028.43	40°01'39.5594"N	104°39'45.1022"W	0.00	
17420.50†	90.071	359.904	7328.70	9375.66	9205.57	-1778.03	3234520.93	1254128.42	40°01'40.5476"N	104°39'45.1044"W	0.00	

Planned Wellpath Report

BUFORD 33-2-2L (REV-A.0) PWP

Page 8 of 10

REFERENCE WELLPATH IDENTIFICATION			
Operator	CONFLUENCE RESOURCES	Well	BUFORD 33-2-2L
Field	WELD COUNTY (NAD83, TRUE NORTH)	API/Legal	
Facility	SEC.34-T01N-R65W	Wellbore	BUFORD 33-2-2L PWB
Slot	SLOT#09 BUFORD 33-2-2L (770'FSL & 944'FWL,SEC.34)		

WELLPATH DATA (182 stations) † = interpolated, ‡ = extrapolated station												
MD [ft]	Inclination [°]	Azimuth [°]	TVD [ft]	Vert Sect [ft]	North [ft]	East [ft]	Grid East [US ft]	Grid North [US ft]	Latitude	Longitude	DLS [°/100ft]	Comments
17520.50†	90.071	359.904	7328.57	9473.94	9305.57	-1778.20	3234519.81	1254228.41	40°01'41.5358"N	104°39'45.1067"W	0.00	
17580.83	90.071	359.904	7328.50‡	9533.22	9365.90	-1778.30	3234519.14	1254288.73	40°01'42.1320"N	104°39'45.1080"W	0.00	End of Tangent

TARGETS									
Name	MD [ft]	TVD [ft]	North [ft]	East [ft]	Grid East [US ft]	Grid North [US ft]	Latitude	Longitude	Shape
SEC 28-T01N-R65W	N/A	1.00	0.00	-176.50	3236209.93	1244938.84	40°00'9.5760"N	104°39'24.5160"W	polygon
	2D Polygon: dimensions not calculated								
SEC 33-T01N-R65W	N/A	1.00	0.00	-176.50	3236209.93	1244938.84	40°00'9.5760"N	104°39'24.5160"W	polygon
	2D Polygon: dimensions not calculated								
SEC 34-T01N-R65W	N/A	1.00	0.00	-176.50	3236209.93	1244938.84	40°00'9.5760"N	104°39'24.5160"W	polygon
	2D Polygon: dimensions not calculated								
2) BUFORD 33-2-2L BHL REV-1 (470'FNL & 821'FEL,SEC.28)	17580.83	7328.50	9365.90	-1778.30	3234519.14	1254288.73	40°01'42.1320"N	104°39'45.1080"W	point
1) BUFORD 33-2-2L LP REV-1 (470'FSL & 821'FEL,SEC.33)	7912.62	7340.50	-302.30	-1762.18	3234627.25	1244621.48	40°00'6.5880"N	104°39'44.8920"W	point

Planned Wellpath Report

BUFORD 33-2-2L (REV-A.0) PWP

Page 9 of 10

REFERENCE WELLPATH IDENTIFICATION			
Operator	CONFLUENCE RESOURCES	Well	BUFORD 33-2-2L
Field	WELD COUNTY (NAD83, TRUE NORTH)	API/Legal	
Facility	SEC.34-T01N-R65W	Wellbore	BUFORD 33-2-2L PWB
Slot	SLOT#09 BUFORD 33-2-2L (770'FSL & 944'FWL, SEC.34)		

SURVEY PROGRAM - Ref Wellbore: BUFORD 33-2-2L PWB Ref Wellpath: BUFORD 33-2-2L (REV-A.0) PWP				
Start MD [ft]	End MD [ft]	Positional Uncertainty Model	Log Name/Comment	Wellbore
20.50	1500.00	BH NaviTrak (2019) (Standard)		BUFORD 33-2-2L PWB
1500.00	17650.27	BH AutoTrak Curve/eXpress (2019) (Standard)		BUFORD 33-2-2L PWB

Planned Wellpath Report

BUFORD 33-2-2L (REV-A.0) PWP

Page 10 of 10

REFERENCE WELLPATH IDENTIFICATION			
Operator	CONFLUENCE RESOURCES	Well	BUFORD 33-2-2L
Field	WELD COUNTY (NAD83, TRUE NORTH)	API/Legal	
Facility	SEC.34-T01N-R65W	Wellbore	BUFORD 33-2-2L PWB
Slot	SLOT#09 BUFORD 33-2-2L (770'FSL & 944'FWL, SEC.34)		

DESIGN COMMENTS				
MD [ft]	Inclination [°]	Azimuth [°]	TVD [ft]	Comment
20.50	0.000	244.249	20.50	Tie On
900.00	0.000	244.249	900.00	End of Tangent
1804.68	18.094	244.249	1789.72	End of Build
7097.65	18.094	244.249	6820.95	End of Tangent
7912.62	90.071	359.904	7340.50	End of 3D Arc
17580.83	90.071	359.904	7328.50	End of Tangent