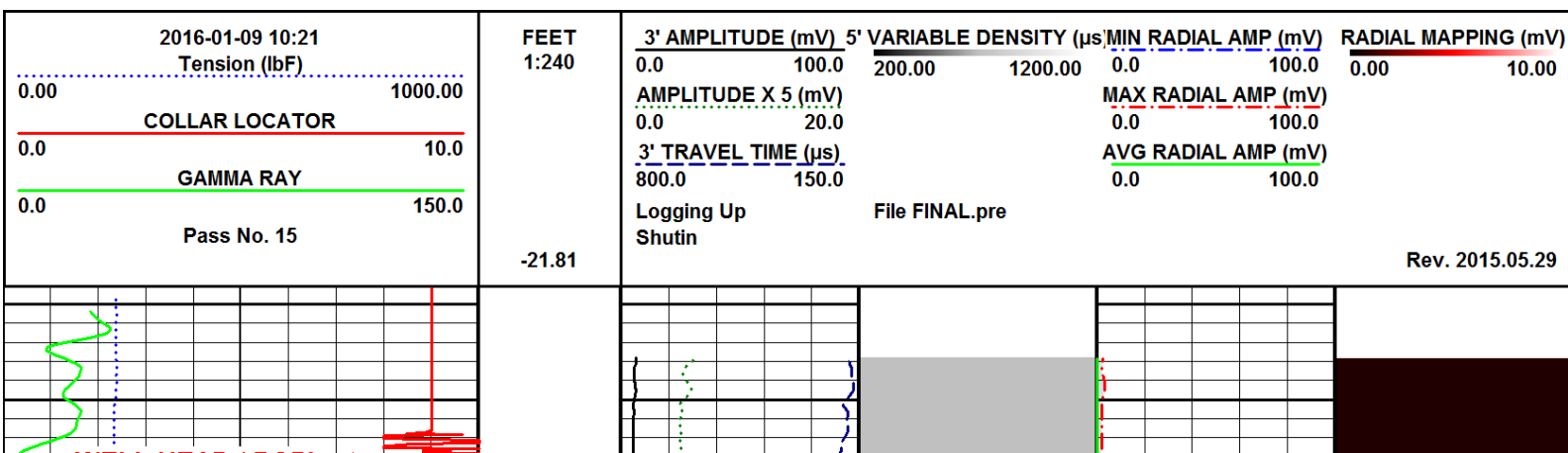
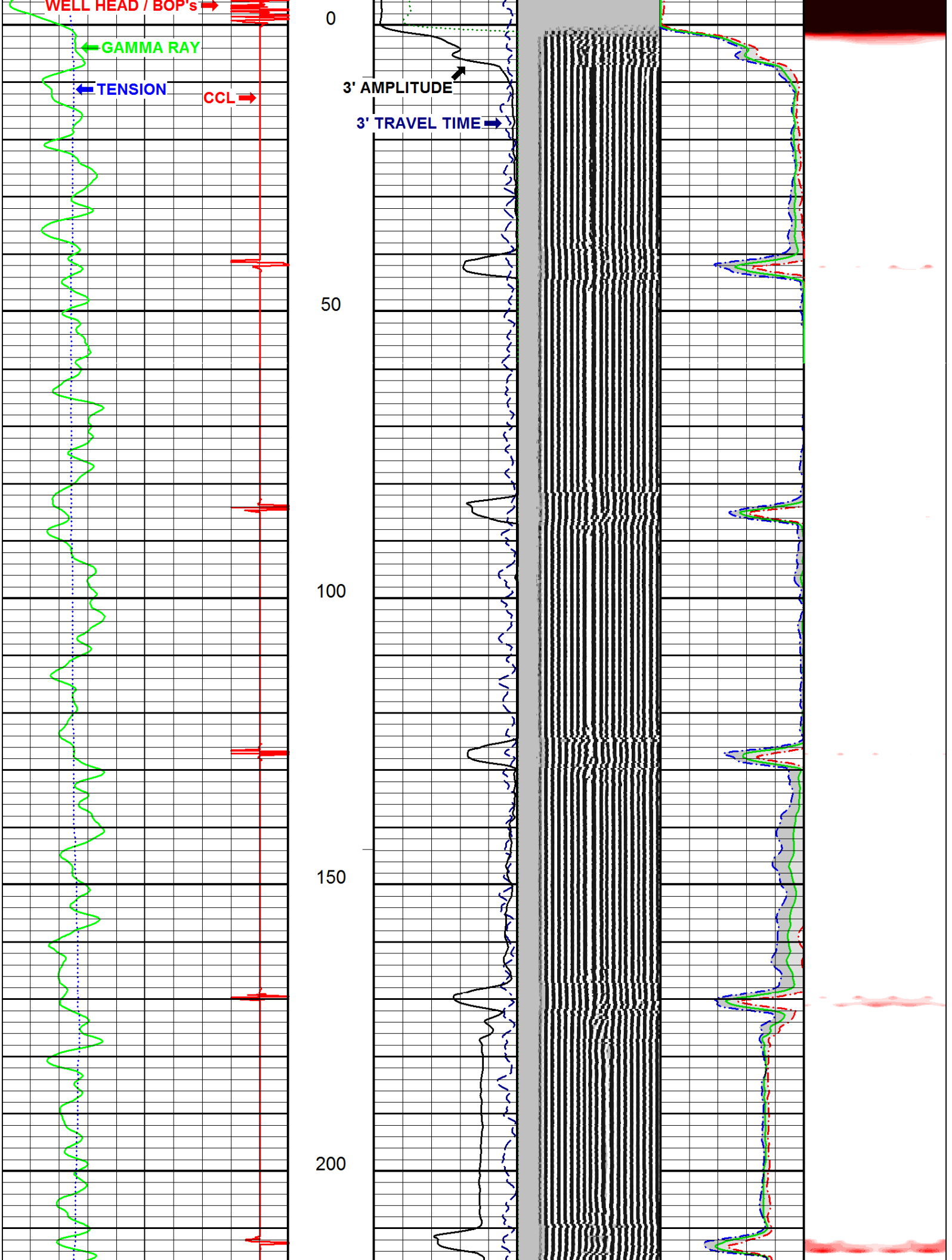


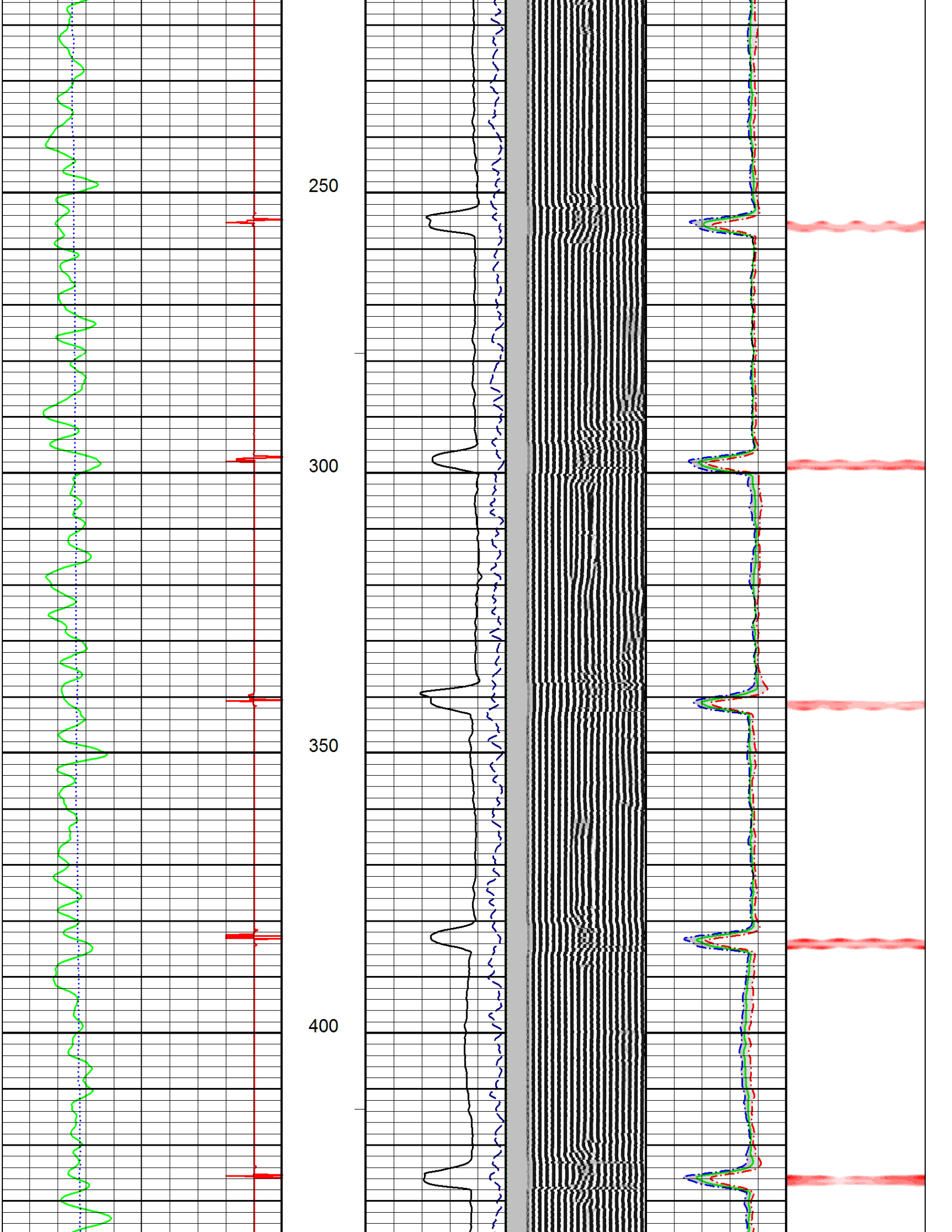


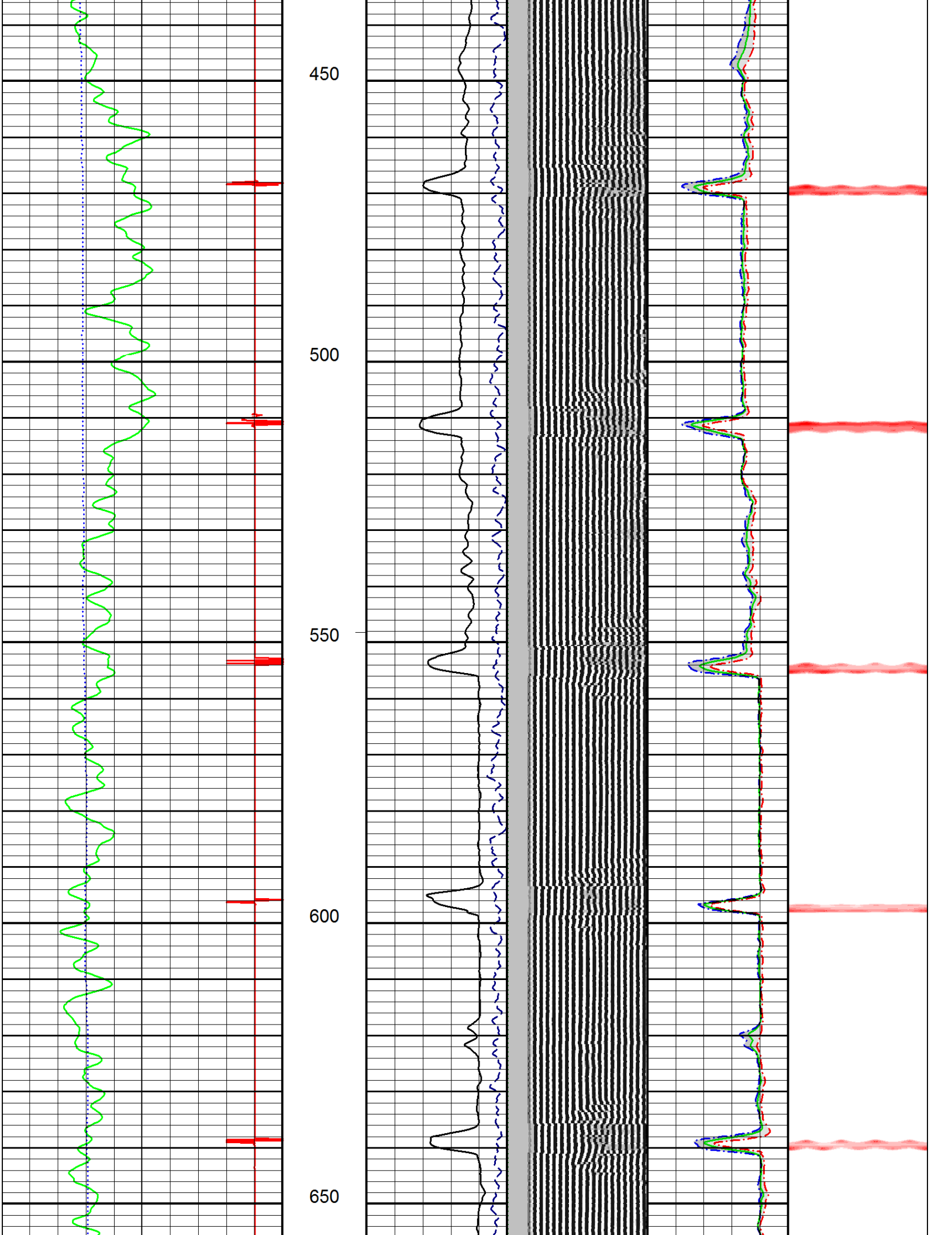
Remarks:	NO CORRELATION LOG AVAILABLE
----------	------------------------------

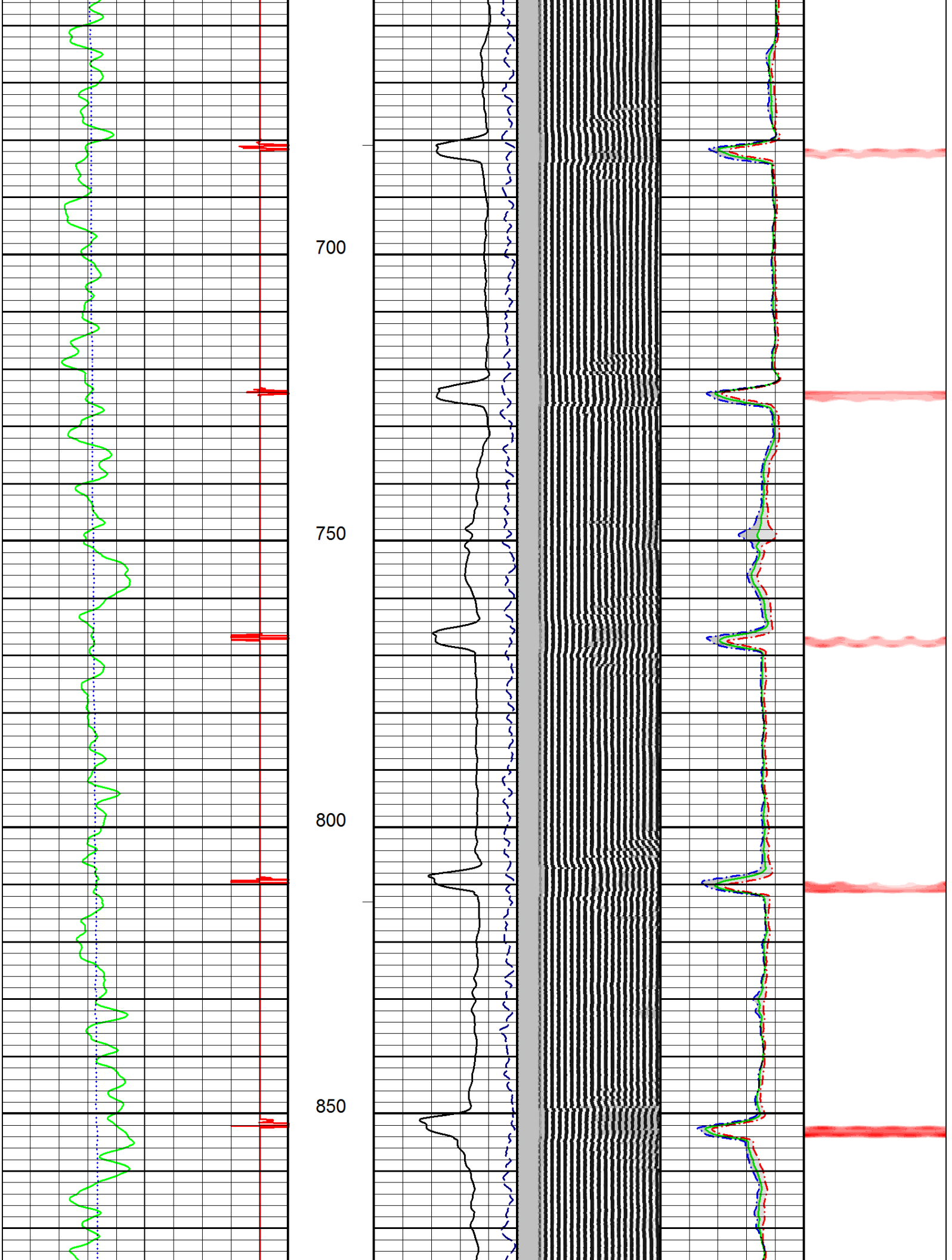
All interpretations are opinions based on inferences from electrical or other measurements and we cannot, and do not guarantee the accuracy or correctness of any interpretations, and we shall not, except in the case of gross or willful negligence on our part, be liable or responsible for any loss, costs, damages or expenses incurred or sustained by anyone resulting from any interpretation made by any of our officers, agents, or employees. These interpretations are also subject to our general terms and conditions as set out in our current price schedule.

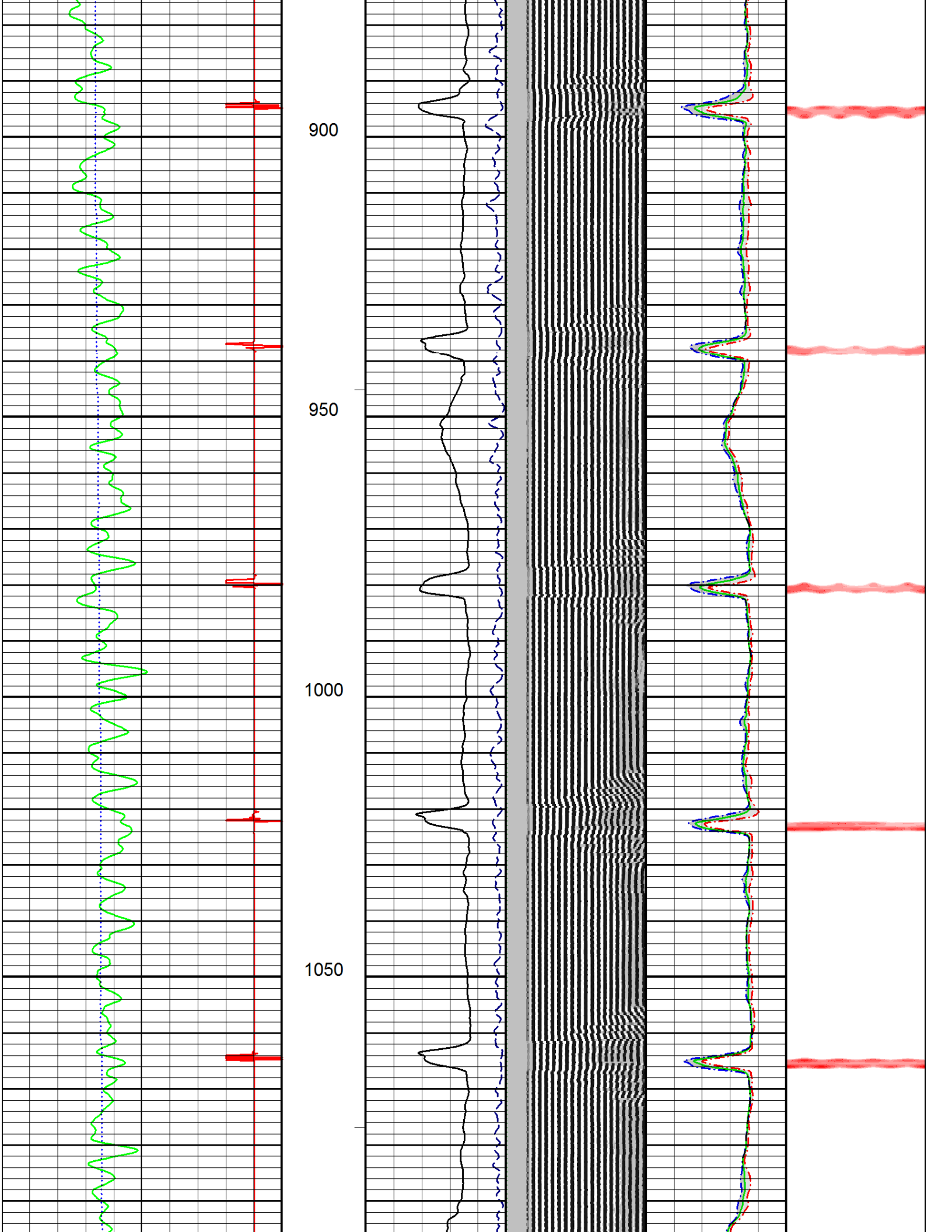


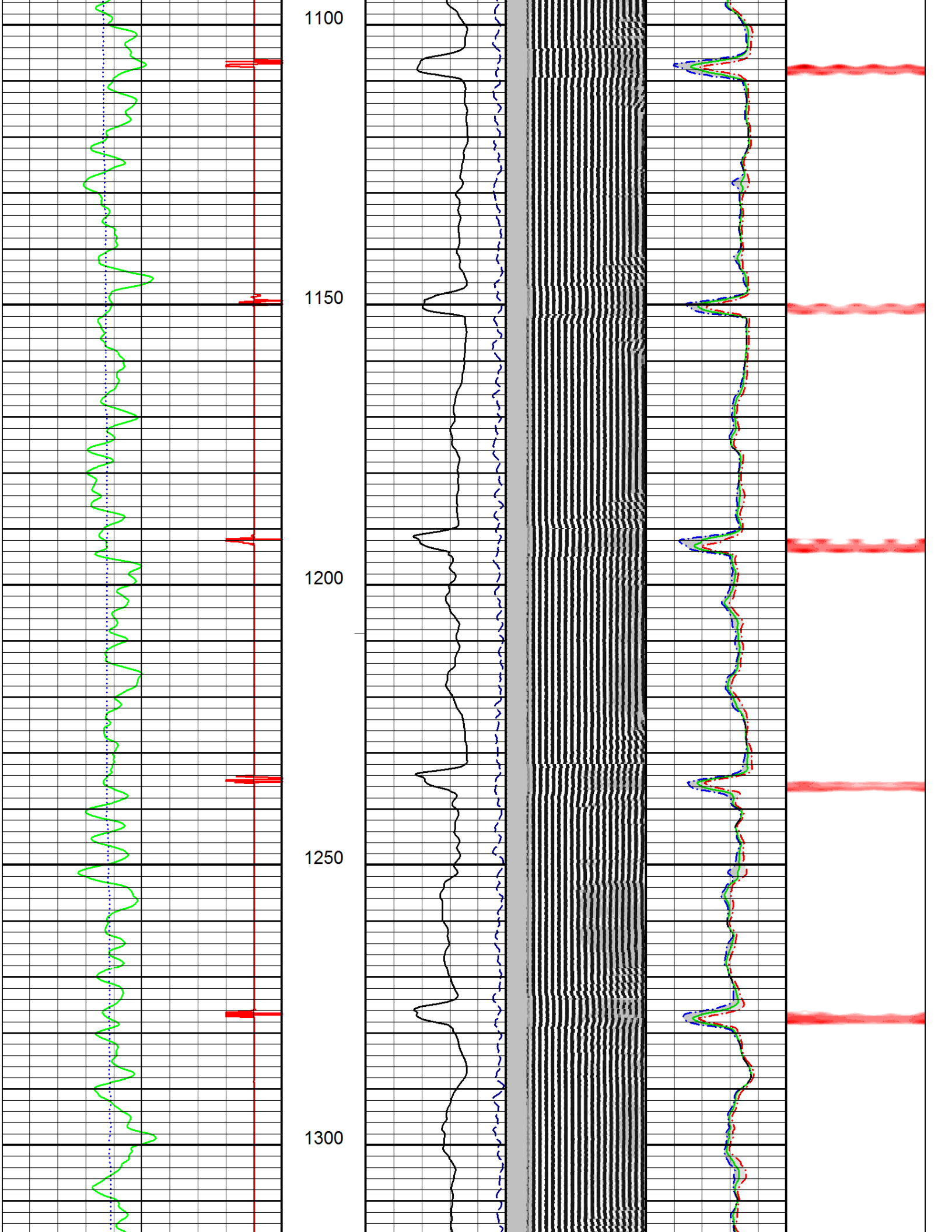


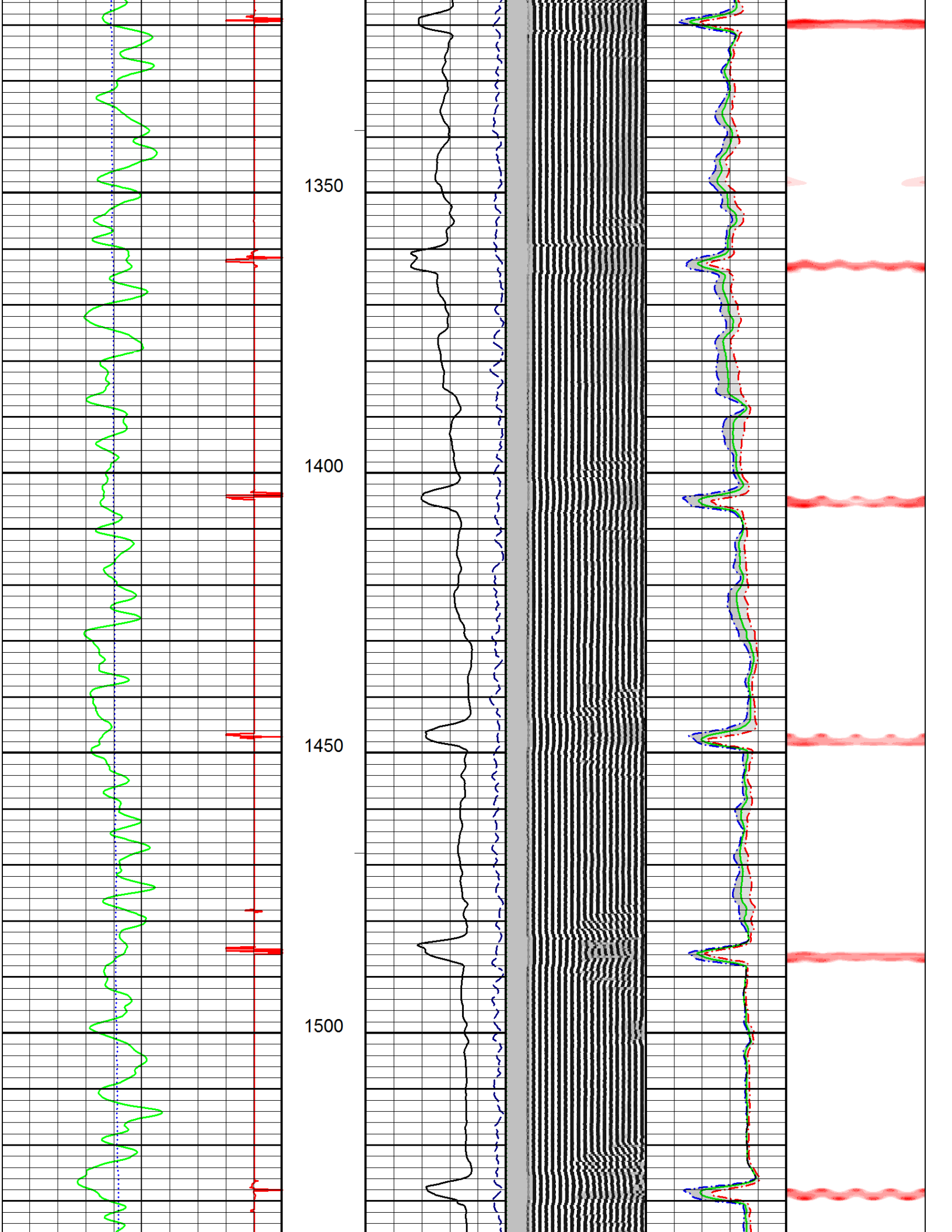


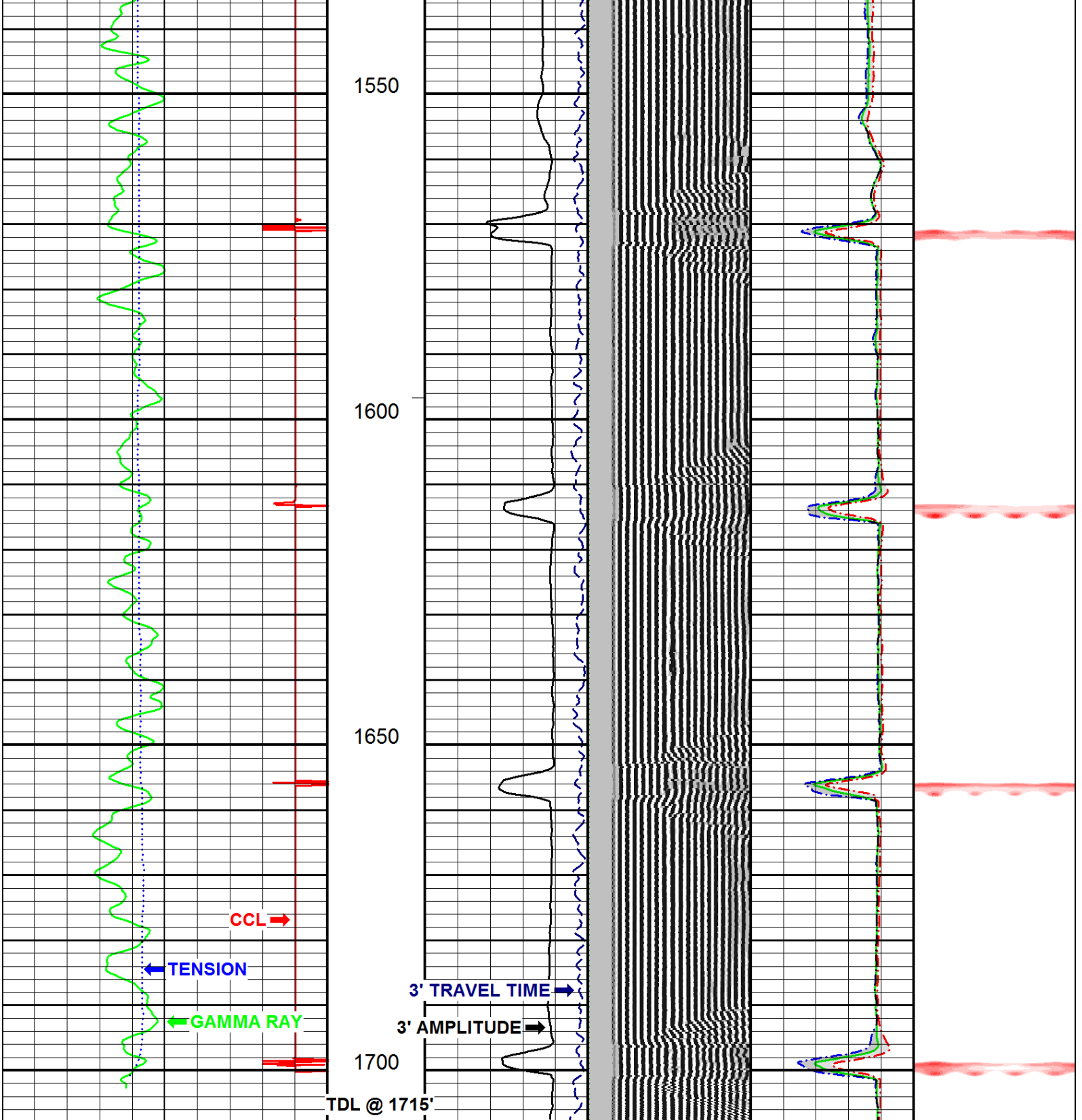












2016-01-09 10:21 Tension (lbF)	1707.87	3' AMPLITUDE (mV)	5' VARIABLE DENSITY (μs)	MIN RADIAL AMP (mV)	RADIAL MAPPING (mV)
0.00 1000.00		0.0 100.0	200.00 1200.00	0.0 100.0	0.00 10.00
COLLAR LOCATOR		AMPLITUDE X 5 (mV)		MAX RADIAL AMP (mV)	
0.0 10.0		0.0 20.0		0.0 100.0	
GAMMA RAY		3' TRAVEL TIME (μs)		AVG RADIAL AMP (mV)	
0.0 150.0		800.0 150.0		0.0 100.0	
Pass No. 15	FEET 1:240	Logging Up Shutin	File FINAL.pre		Rev. 2015.05.29



Company PDC ENERGY INC.

Well MOODY 22-6

Field WATTENBERG - 90750

County WELD **State** COLORADO

1/4'S SENW **SEC** 6 **TWP.** 6N **RGE.** 64W