



Holloway & Holloway, Inc.
P.O. Box 3331
Greeley, CO 80633
(303) 867-3715
(303) 352-5852

075-09315

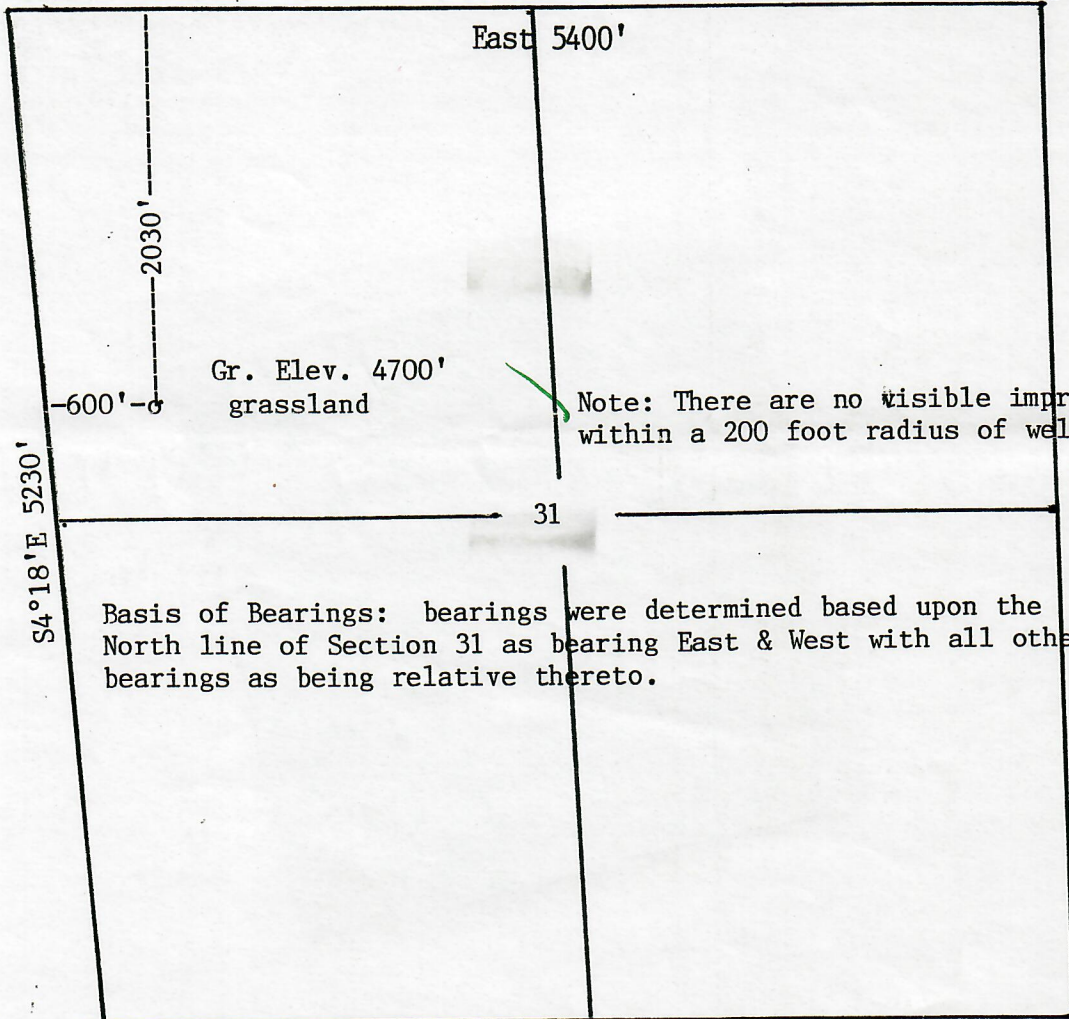


99999999

R53W

NE cor. fence
corner N&W

NW cor. fence
corner S&E
Basis of elev
spot elev at
NW cor. 4688'



Basis of Bearings: bearings were determined based upon the North line of Section 31 as bearing East & West with all other bearings as being relative thereto.

SW cor. CL road
East & West at fence North

Scale --- 1" = 1000'

In accordance with a request from Winslow Resources, Inc.
the Undersigned has
determined the location of the No.1 Meyer well

to be 2030'FNL & 600'FWL at right angles

as co-ordinates

Section 31 Township 12N Range 53W of the 6th principal Meridian

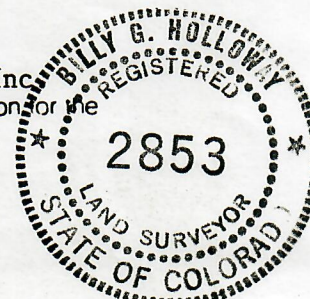
Logan County, Colorado.

I hereby certify,
that this oil and/or gas well location certificate was prepared for Winslow Resources, Inc.
that it is not a land survey plat or improvement survey plat, and that it is not to be relied upon for the
establishment of fence, building or other future improvement lines.

Date 5-29-97

Billy G. Holloway
Holloway & Holloway, Inc.

States of
Colorado, Nebraska, Wyoming



00300568



Holloway & Holloway, Inc.
P.O. Box 1037
Denver, CO 80222
(303) 733-1111
(303) 733-1112

01510

NE cor. Tangle
corner NW
corner SW

NW cor. Tangle
corner SW
corner SE
corner NE
NW cor. 4000'

8/18/97
TOLD DAVE WINDLOW
WILL GIVE 90 DAYS
FROM TD TO EVALUATE
PRIOR TO STAGING

JA

SW cor. CL road
East & West at Tangle North

Scale - 1" = 1000'

In accordance with a request from Windlow Resources, Inc.,
the undersigned has determined the location of the No. 1 layer

to be 300 feet & south of right angle

Section 31 Township 12N Range 2W of the 6th Principal Meridian

Logan County, Colorado



1. Every county
and the oil and gas well location certificate was prepared for Windlow Resources, Inc.
and a not a land survey plat or report and it is not to be used as a
replacement of a well or other survey instrument.

Date: 8-28-97

Holloway & Holloway, Inc.