

Project: Garfield County, CO
 Site: NPM G35 496 Pad
 Well: BJU G35 FED 24A-35 496
 Wellbore: Wellbore #1
 Design: Design #1
 Latitude: 39.660460
 Longitude: -108.134124
 Ground Level: 8164.0
 RKB @ 8194.0usft (H&P#329)

FORMATION TOP DETAILS		
TVDPth	MDPath	Formation
2517.0	2571.2	Wasatch
5517.0	5654.1	Wasatch G
5804.0	5949.0	Fort Union
7862.0	8055.7	Ohio Creek
7862.0	8055.7	TOG
8104.0	8297.8	Williams Fork
10641.0	11035.8	Cameo
11424.0	11619.0	Rollins

REFERENCE INFORMATION

Co-ordinate (N/E) Reference: Well BJU G35 FED 24A-35 496 - Slot BJU G35 FED 24A-35 496, True North
 Vertical (TVD) Reference: RKB @ 8194.0usft (H&P#329)
 Section (VS) Reference: Slot - BJU G35 FED 24A-35 496(0.0N, 0.0E)
 Measured Depth Reference: RKB @ 8194.0usft (H&P#329)
 Calculation Method: Minimum Curvature

WELL DETAILS: BJU G35 FED 24A-35 496

+N/-S	+E/-W	Northing	Easting	Latitude	Longitude
0.0	0.0	14415291.30	8164.0 2447053.00	39.660460	-108.134124

PROJECT DETAILS: Garfield County, CO

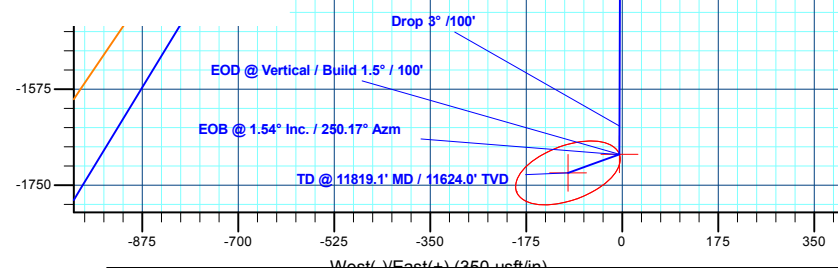
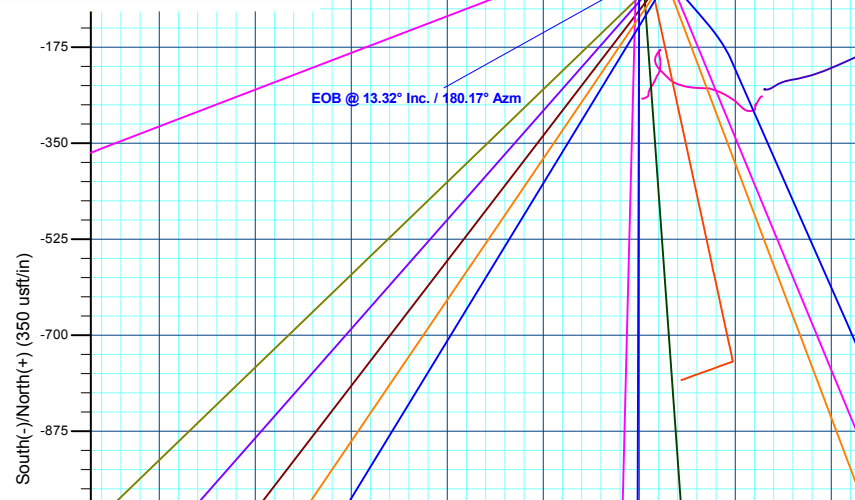
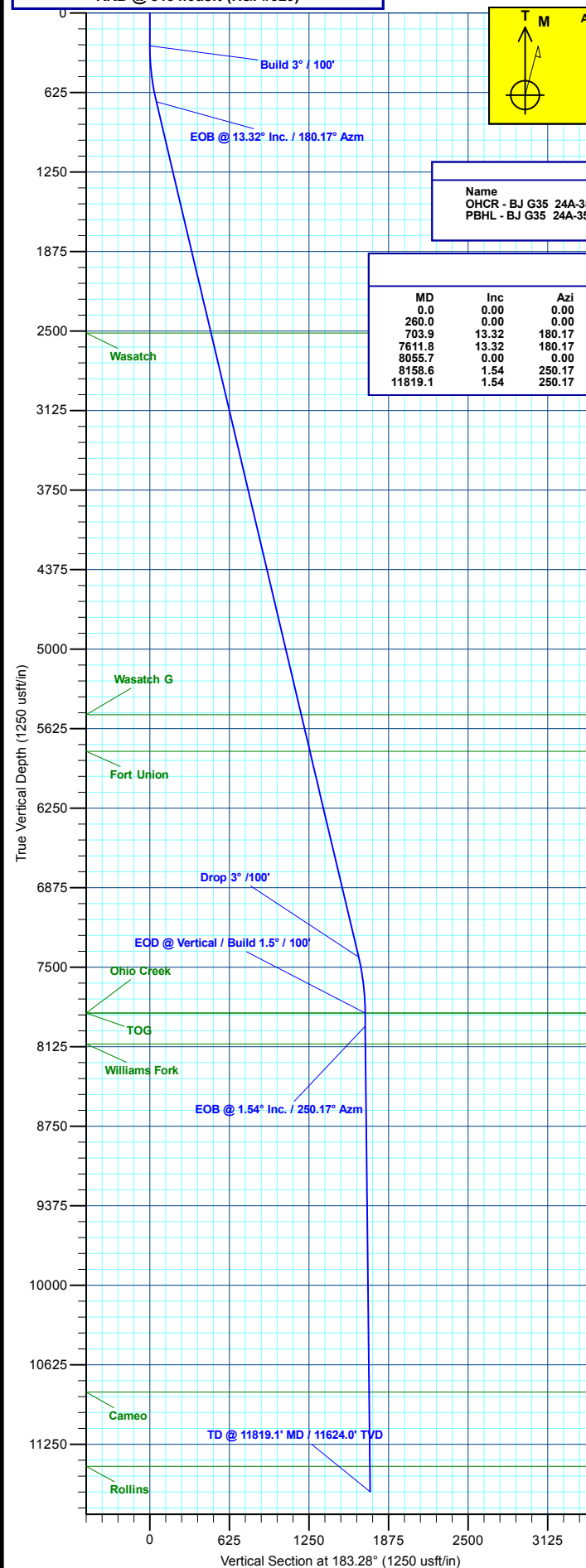
Geodetic System: Universal Transverse Mercator (US Survey Feet)
 Datum: NAD 1927 - Western US
 Ellipsoid: Clarke 1866
 Zone: Zone 12N (114 W to 108 W)
 System Datum: Mean Sea Level

DESIGN TARGET DETAILS

Name	TVD	+N/-S	+E/-W	Northing	Easting	Latitude	Longitude
OHCR - BJ G35 24A-35 496	7862.0	-1693.9	-5.1	14413598.08	2447102.05	39.655811	-108.134142
PBHL - BJ G35 24A-35 496	11624.0	-1727.8	-99.0	14413561.20	2447009.20	39.655718	-108.134476

SECTION DETAILS

MD	Inc	Azi	TVD	+N/-S	+E/-W	Dleg	TFace	Vsect	Annotation
0.0	0.00	0.00	0.0	0.0	0.0	0.00	0.00	0.0	Build 3° / 100'
260.0	0.00	0.00	260.0	0.0	0.0	0.00	0.00	0.0	EOB @ 13.32° Inc. / 180.17° Azm
703.9	13.32	180.17	699.9	-51.4	-0.2	3.00	180.17	51.3	Drop 3° / 100'
7611.8	13.32	180.17	7422.1	-1642.6	-4.9	0.00	0.00	1640.2	EOD @ Vertical / Build 1.5° / 100'
8055.7	0.00	0.00	7862.0	-1693.9	-5.1	3.00	180.00	1691.4	EOB @ Vertical / Build 1.5° / 100'
8158.6	1.54	250.17	7964.8	-1694.4	-6.4	1.50	250.17	1692.0	EOB @ 1.54° Inc. / 250.17° Azm
11819.1	1.54	250.17	11624.0	-1727.8	-99.0	0.00	0.00	1730.7	TD @ 11819.1' MD / 11624.0' TVD



Plan: Design #1 (BJU G35 FED 24A-35 496/Wellbore #1)

Created By: Will Jircik

Date: 16:35, December 18 2019



Caerus Oil & Gas

Garfield County, CO

NPM G35 496 Pad

BJU G35 FED 24A-35 496 - Slot BJU G35 FED 24A-35 496

Wellbore #1

Plan: Design #1

QES Well Planning Report

18 December, 2019



Database:	EDM 5000.1 Single User Db	Local Co-ordinate Reference:	Well BJU G35 FED 24A-35 496 - Slot BJU G35 FED 24A-35 496
Company:	Caerus Oil & Gas	TVD Reference:	RKB @ 8194.0usft (H&P#329)
Project:	Garfield County, CO	MD Reference:	RKB @ 8194.0usft (H&P#329)
Site:	NPM G35 496 Pad	North Reference:	True
Well:	BJU G35 FED 24A-35 496	Survey Calculation Method:	Minimum Curvature
Wellbore:	Wellbore #1		
Design:	Design #1		

Project	Garfield County, CO		
Map System:	Universal Transverse Mercator (US Survey Fee	System Datum:	Mean Sea Level
Geo Datum:	NAD 1927 - Western US		
Map Zone:	Zone 12N (114 W to 108 W)		

Site	NPM G35 496 Pad		
Site Position:		Northing:	14,415,354.00 usft
From:	Map	Easting:	2,447,010.80 usft
Position Uncertainty:	0.0 usft	Slot Radius:	13-3/16 "
		Latitude:	39.660635
		Longitude:	-108.134267
		Grid Convergence:	1.83 °

Well	BJU G35 FED 24A-35 496 - Slot BJU G35 FED 24A-35 496		
Well Position	+N/-S	-64.0 usft	Northing: 14,415,291.30 usft
	+E/-W	40.2 usft	Easting: 2,447,053.00 usft
Position Uncertainty	0.0 usft	Wellhead Elevation:	Latitude: 39.660460
			Longitude: -108.134124
			Ground Level: 8,164.0 usft

Wellbore	Wellbore #1				
Magnetics	Model Name	Sample Date	Declination (°)	Dip Angle (°)	Field Strength (nT)
	HDGM_FILE	12/11/2019	9.48	65.83	51,251.00000000

Design	Design #1				
Audit Notes:					
Version:	Phase:	PLAN	Tie On Depth:	0.0	
Vertical Section:	Depth From (TVD) (usft)	+N/-S (usft)	+E/-W (usft)	Direction (°)	
	0.0	0.0	0.0	183.28	

Plan Sections										
Measured Depth (usft)	Inclination (°)	Azimuth (°)	Vertical Depth (usft)	+N/-S (usft)	+E/-W (usft)	Dogleg Rate (°/100usft)	Build Rate (°/100usft)	Turn Rate (°/100usft)	TFO (°)	Target
0.0	0.00	0.00	0.0	0.0	0.0	0.00	0.00	0.00	0.00	
260.0	0.00	0.00	260.0	0.0	0.0	0.00	0.00	0.00	0.00	
703.9	13.32	180.17	699.9	-51.4	-0.2	3.00	3.00	0.00	180.17	
7,611.8	13.32	180.17	7,422.1	-1,642.6	-4.9	0.00	0.00	0.00	0.00	
8,055.7	0.00	0.00	7,862.0	-1,693.9	-5.1	3.00	-3.00	0.00	180.00	OHCR - BJ G35 24
8,158.6	1.54	250.17	7,964.8	-1,694.4	-6.4	1.50	1.50	-106.82	250.17	
11,819.1	1.54	250.17	11,624.0	-1,727.8	-99.0	0.00	0.00	0.00	0.00	PBHL - BJ G35 24

Database:	EDM 5000.1 Single User Db	Local Co-ordinate Reference:	Well BJU G35 FED 24A-35 496 - Slot BJU G35 FED 24A-35 496
Company:	Caerus Oil & Gas	TVD Reference:	RKB @ 8194.0usft (H&P#329)
Project:	Garfield County, CO	MD Reference:	RKB @ 8194.0usft (H&P#329)
Site:	NPM G35 496 Pad	North Reference:	True
Well:	BJU G35 FED 24A-35 496	Survey Calculation Method:	Minimum Curvature
Wellbore:	Wellbore #1		
Design:	Design #1		

Planned Survey

Measured Depth (usft)	Inclination (°)	Azimuth (°)	Vertical Depth (usft)	+N/-S (usft)	+E/-W (usft)	Vertical Section (usft)	Dogleg Rate (°/100usft)	Build Rate (°/100usft)	Turn Rate (°/100usft)
0.0	0.00	0.00	0.0	0.0	0.0	0.0	0.00	0.00	0.00
100.0	0.00	0.00	100.0	0.0	0.0	0.0	0.00	0.00	0.00
200.0	0.00	0.00	200.0	0.0	0.0	0.0	0.00	0.00	0.00
Build 3° / 100'									
260.0	0.00	0.00	260.0	0.0	0.0	0.0	0.00	0.00	0.00
300.0	1.20	180.17	300.0	-0.4	0.0	0.4	3.00	3.00	0.00
400.0	4.20	180.17	399.9	-5.1	0.0	5.1	3.00	3.00	0.00
500.0	7.20	180.17	499.4	-15.1	0.0	15.0	3.00	3.00	0.00
600.0	10.20	180.17	598.2	-30.2	-0.1	30.1	3.00	3.00	0.00
EOB @ 13.32° Inc. / 180.17° Azm									
703.9	13.32	180.17	699.9	-51.4	-0.2	51.3	3.00	3.00	0.00
800.0	13.32	180.17	793.4	-73.5	-0.2	73.4	0.00	0.00	0.00
900.0	13.32	180.17	890.7	-96.5	-0.3	96.4	0.00	0.00	0.00
1,000.0	13.32	180.17	988.1	-119.6	-0.4	119.4	0.00	0.00	0.00
1,100.0	13.32	180.17	1,085.4	-142.6	-0.4	142.4	0.00	0.00	0.00
1,200.0	13.32	180.17	1,182.7	-165.6	-0.5	165.4	0.00	0.00	0.00
1,300.0	13.32	180.17	1,280.0	-188.7	-0.6	188.4	0.00	0.00	0.00
1,400.0	13.32	180.17	1,377.3	-211.7	-0.6	211.4	0.00	0.00	0.00
1,500.0	13.32	180.17	1,474.6	-234.7	-0.7	234.4	0.00	0.00	0.00
1,600.0	13.32	180.17	1,571.9	-257.8	-0.8	257.4	0.00	0.00	0.00
1,700.0	13.32	180.17	1,669.2	-280.8	-0.8	280.4	0.00	0.00	0.00
1,800.0	13.32	180.17	1,766.5	-303.8	-0.9	303.4	0.00	0.00	0.00
1,900.0	13.32	180.17	1,863.8	-326.9	-1.0	326.4	0.00	0.00	0.00
2,000.0	13.32	180.17	1,961.2	-349.9	-1.0	349.4	0.00	0.00	0.00
2,100.0	13.32	180.17	2,058.5	-372.9	-1.1	372.4	0.00	0.00	0.00
2,200.0	13.32	180.17	2,155.8	-396.0	-1.2	395.4	0.00	0.00	0.00
2,300.0	13.32	180.17	2,253.1	-419.0	-1.2	418.4	0.00	0.00	0.00
2,400.0	13.32	180.17	2,350.4	-442.0	-1.3	441.4	0.00	0.00	0.00
2,500.0	13.32	180.17	2,447.7	-465.1	-1.4	464.4	0.00	0.00	0.00
Wasatch									
2,571.2	13.32	180.17	2,517.0	-481.5	-1.4	480.8	0.00	0.00	0.00
2,600.0	13.32	180.17	2,545.0	-488.1	-1.5	487.4	0.00	0.00	0.00
2,700.0	13.32	180.17	2,642.3	-511.1	-1.5	510.4	0.00	0.00	0.00
2,800.0	13.32	180.17	2,739.6	-534.2	-1.6	533.4	0.00	0.00	0.00
2,900.0	13.32	180.17	2,837.0	-557.2	-1.7	556.4	0.00	0.00	0.00
3,000.0	13.32	180.17	2,934.3	-580.3	-1.7	579.4	0.00	0.00	0.00
3,100.0	13.32	180.17	3,031.6	-603.3	-1.8	602.4	0.00	0.00	0.00
3,200.0	13.32	180.17	3,128.9	-626.3	-1.9	625.4	0.00	0.00	0.00
3,300.0	13.32	180.17	3,226.2	-649.4	-1.9	648.4	0.00	0.00	0.00
3,400.0	13.32	180.17	3,323.5	-672.4	-2.0	671.4	0.00	0.00	0.00
3,500.0	13.32	180.17	3,420.8	-695.4	-2.1	694.4	0.00	0.00	0.00
3,600.0	13.32	180.17	3,518.1	-718.5	-2.1	717.4	0.00	0.00	0.00
3,700.0	13.32	180.17	3,615.4	-741.5	-2.2	740.4	0.00	0.00	0.00
3,800.0	13.32	180.17	3,712.8	-764.5	-2.3	763.4	0.00	0.00	0.00
3,900.0	13.32	180.17	3,810.1	-787.6	-2.3	786.4	0.00	0.00	0.00
4,000.0	13.32	180.17	3,907.4	-810.6	-2.4	809.4	0.00	0.00	0.00
4,100.0	13.32	180.17	4,004.7	-833.6	-2.5	832.4	0.00	0.00	0.00
4,200.0	13.32	180.17	4,102.0	-856.7	-2.6	855.4	0.00	0.00	0.00
4,300.0	13.32	180.17	4,199.3	-879.7	-2.6	878.4	0.00	0.00	0.00
4,400.0	13.32	180.17	4,296.6	-902.7	-2.7	901.4	0.00	0.00	0.00
4,500.0	13.32	180.17	4,393.9	-925.8	-2.8	924.4	0.00	0.00	0.00
4,600.0	13.32	180.17	4,491.2	-948.8	-2.8	947.4	0.00	0.00	0.00
4,700.0	13.32	180.17	4,588.6	-971.8	-2.9	970.4	0.00	0.00	0.00

Database:	EDM 5000.1 Single User Db	Local Co-ordinate Reference:	Well BJU G35 FED 24A-35 496 - Slot BJU G35 FED 24A-35 496
Company:	Caerus Oil & Gas	TVD Reference:	RKB @ 8194.0usft (H&P#329)
Project:	Garfield County, CO	MD Reference:	RKB @ 8194.0usft (H&P#329)
Site:	NPM G35 496 Pad	North Reference:	True
Well:	BJU G35 FED 24A-35 496	Survey Calculation Method:	Minimum Curvature
Wellbore:	Wellbore #1		
Design:	Design #1		

Planned Survey

Measured Depth (usft)	Inclination (°)	Azimuth (°)	Vertical Depth (usft)	+N/-S (usft)	+E/-W (usft)	Vertical Section (usft)	Dogleg Rate (°/100usft)	Build Rate (°/100usft)	Turn Rate (°/100usft)
4,800.0	13.32	180.17	4,685.9	-994.9	-3.0	993.4	0.00	0.00	0.00
4,900.0	13.32	180.17	4,783.2	-1,017.9	-3.0	1,016.4	0.00	0.00	0.00
5,000.0	13.32	180.17	4,880.5	-1,040.9	-3.1	1,039.4	0.00	0.00	0.00
5,100.0	13.32	180.17	4,977.8	-1,064.0	-3.2	1,062.4	0.00	0.00	0.00
5,200.0	13.32	180.17	5,075.1	-1,087.0	-3.2	1,085.4	0.00	0.00	0.00
5,300.0	13.32	180.17	5,172.4	-1,110.0	-3.3	1,108.4	0.00	0.00	0.00
5,400.0	13.32	180.17	5,269.7	-1,133.1	-3.4	1,131.4	0.00	0.00	0.00
5,500.0	13.32	180.17	5,367.0	-1,156.1	-3.4	1,154.4	0.00	0.00	0.00
5,600.0	13.32	180.17	5,464.4	-1,179.2	-3.5	1,177.4	0.00	0.00	0.00
Wasatch G									
5,654.1	13.32	180.17	5,517.0	-1,191.6	-3.6	1,189.9	0.00	0.00	0.00
5,700.0	13.32	180.17	5,561.7	-1,202.2	-3.6	1,200.4	0.00	0.00	0.00
5,800.0	13.32	180.17	5,659.0	-1,225.2	-3.7	1,223.4	0.00	0.00	0.00
5,900.0	13.32	180.17	5,756.3	-1,248.3	-3.7	1,246.4	0.00	0.00	0.00
Fort Union									
5,949.0	13.32	180.17	5,804.0	-1,259.5	-3.8	1,257.7	0.00	0.00	0.00
6,000.0	13.32	180.17	5,853.6	-1,271.3	-3.8	1,269.4	0.00	0.00	0.00
6,100.0	13.32	180.17	5,950.9	-1,294.3	-3.9	1,292.4	0.00	0.00	0.00
6,200.0	13.32	180.17	6,048.2	-1,317.4	-3.9	1,315.4	0.00	0.00	0.00
6,300.0	13.32	180.17	6,145.5	-1,340.4	-4.0	1,338.4	0.00	0.00	0.00
6,400.0	13.32	180.17	6,242.8	-1,363.4	-4.1	1,361.4	0.00	0.00	0.00
6,500.0	13.32	180.17	6,340.1	-1,386.5	-4.1	1,384.4	0.00	0.00	0.00
6,600.0	13.32	180.17	6,437.5	-1,409.5	-4.2	1,407.4	0.00	0.00	0.00
6,700.0	13.32	180.17	6,534.8	-1,432.5	-4.3	1,430.4	0.00	0.00	0.00
6,800.0	13.32	180.17	6,632.1	-1,455.6	-4.3	1,453.4	0.00	0.00	0.00
6,900.0	13.32	180.17	6,729.4	-1,478.6	-4.4	1,476.4	0.00	0.00	0.00
7,000.0	13.32	180.17	6,826.7	-1,501.6	-4.5	1,499.4	0.00	0.00	0.00
7,100.0	13.32	180.17	6,924.0	-1,524.7	-4.5	1,522.4	0.00	0.00	0.00
7,200.0	13.32	180.17	7,021.3	-1,547.7	-4.6	1,545.4	0.00	0.00	0.00
7,300.0	13.32	180.17	7,118.6	-1,570.7	-4.7	1,568.4	0.00	0.00	0.00
7,400.0	13.32	180.17	7,215.9	-1,593.8	-4.8	1,591.4	0.00	0.00	0.00
7,500.0	13.32	180.17	7,313.3	-1,616.8	-4.8	1,614.4	0.00	0.00	0.00
7,600.0	13.32	180.17	7,410.6	-1,639.8	-4.9	1,637.4	0.00	0.00	0.00
Drop 3° /100'									
7,611.8	13.32	180.17	7,422.1	-1,642.6	-4.9	1,640.2	0.00	0.00	0.00
7,700.0	10.67	180.17	7,508.3	-1,660.9	-5.0	1,658.5	3.00	-3.00	0.00
7,800.0	7.67	180.17	7,607.0	-1,676.8	-5.0	1,674.4	3.00	-3.00	0.00
7,900.0	4.67	180.17	7,706.4	-1,687.6	-5.0	1,685.1	3.00	-3.00	0.00
8,000.0	1.67	180.17	7,806.3	-1,693.1	-5.0	1,690.6	3.00	-3.00	0.00
EOD @ Vertical / Build 1.5° / 100' - Ohio Creek - TOG									
8,055.7	0.00	0.00	7,862.0	-1,693.9	-5.1	1,691.4	3.00	-3.00	0.00
8,100.0	0.66	250.17	7,906.3	-1,694.0	-5.3	1,691.5	1.50	1.50	0.00
EOB @ 1.54° Inc. / 250.17° Azm									
8,158.6	1.54	250.17	7,964.8	-1,694.4	-6.4	1,692.0	1.50	1.50	0.00
8,200.0	1.54	250.17	8,006.2	-1,694.8	-7.4	1,692.4	0.00	0.00	0.00
Williams Fork									
8,297.8	1.54	250.17	8,104.0	-1,695.7	-9.9	1,693.5	0.00	0.00	0.00
8,300.0	1.54	250.17	8,106.2	-1,695.7	-9.9	1,693.5	0.00	0.00	0.00
8,400.0	1.54	250.17	8,206.2	-1,696.6	-12.5	1,694.5	0.00	0.00	0.00
8,500.0	1.54	250.17	8,306.1	-1,697.5	-15.0	1,695.6	0.00	0.00	0.00
8,600.0	1.54	250.17	8,406.1	-1,698.4	-17.5	1,696.6	0.00	0.00	0.00
8,700.0	1.54	250.17	8,506.1	-1,699.3	-20.1	1,697.7	0.00	0.00	0.00

Database:	EDM 5000.1 Single User Db	Local Co-ordinate Reference:	Well BJU G35 FED 24A-35 496 - Slot BJU G35 FED 24A-35 496
Company:	Caerus Oil & Gas	TVD Reference:	RKB @ 8194.0usft (H&P#329)
Project:	Garfield County, CO	MD Reference:	RKB @ 8194.0usft (H&P#329)
Site:	NPM G35 496 Pad	North Reference:	True
Well:	BJU G35 FED 24A-35 496	Survey Calculation Method:	Minimum Curvature
Wellbore:	Wellbore #1		
Design:	Design #1		

Planned Survey

Measured Depth (usft)	Inclination (°)	Azimuth (°)	Vertical Depth (usft)	+N/-S (usft)	+E/-W (usft)	Vertical Section (usft)	Dogleg Rate (°/100usft)	Build Rate (°/100usft)	Turn Rate (°/100usft)
8,800.0	1.54	250.17	8,606.0	-1,700.2	-22.6	1,698.8	0.00	0.00	0.00
8,900.0	1.54	250.17	8,706.0	-1,701.2	-25.1	1,699.8	0.00	0.00	0.00
9,000.0	1.54	250.17	8,805.9	-1,702.1	-27.7	1,700.9	0.00	0.00	0.00
9,100.0	1.54	250.17	8,905.9	-1,703.0	-30.2	1,701.9	0.00	0.00	0.00
9,200.0	1.54	250.17	9,005.9	-1,703.9	-32.7	1,703.0	0.00	0.00	0.00
9,300.0	1.54	250.17	9,105.8	-1,704.8	-35.3	1,704.0	0.00	0.00	0.00
9,400.0	1.54	250.17	9,205.8	-1,705.7	-37.8	1,705.1	0.00	0.00	0.00
9,500.0	1.54	250.17	9,305.8	-1,706.6	-40.3	1,706.2	0.00	0.00	0.00
9,600.0	1.54	250.17	9,405.7	-1,707.6	-42.8	1,707.2	0.00	0.00	0.00
9,700.0	1.54	250.17	9,505.7	-1,708.5	-45.4	1,708.3	0.00	0.00	0.00
9,800.0	1.54	250.17	9,605.7	-1,709.4	-47.9	1,709.3	0.00	0.00	0.00
9,900.0	1.54	250.17	9,705.6	-1,710.3	-50.4	1,710.4	0.00	0.00	0.00
10,000.0	1.54	250.17	9,805.6	-1,711.2	-53.0	1,711.4	0.00	0.00	0.00
10,100.0	1.54	250.17	9,905.5	-1,712.1	-55.5	1,712.5	0.00	0.00	0.00
10,200.0	1.54	250.17	10,005.5	-1,713.0	-58.0	1,713.5	0.00	0.00	0.00
10,300.0	1.54	250.17	10,105.5	-1,713.9	-60.6	1,714.6	0.00	0.00	0.00
10,400.0	1.54	250.17	10,205.4	-1,714.9	-63.1	1,715.7	0.00	0.00	0.00
10,500.0	1.54	250.17	10,305.4	-1,715.8	-65.6	1,716.7	0.00	0.00	0.00
10,600.0	1.54	250.17	10,405.4	-1,716.7	-68.2	1,717.8	0.00	0.00	0.00
10,700.0	1.54	250.17	10,505.3	-1,717.6	-70.7	1,718.8	0.00	0.00	0.00
10,800.0	1.54	250.17	10,605.3	-1,718.5	-73.2	1,719.9	0.00	0.00	0.00
10,900.0	1.54	250.17	10,705.3	-1,719.4	-75.8	1,720.9	0.00	0.00	0.00
11,000.0	1.54	250.17	10,805.2	-1,720.3	-78.3	1,722.0	0.00	0.00	0.00
Cameo									
11,035.8	1.54	250.17	10,841.0	-1,720.7	-79.2	1,722.4	0.00	0.00	0.00
11,100.0	1.54	250.17	10,905.2	-1,721.3	-80.8	1,723.1	0.00	0.00	0.00
11,200.0	1.54	250.17	11,005.1	-1,722.2	-83.4	1,724.1	0.00	0.00	0.00
11,300.0	1.54	250.17	11,105.1	-1,723.1	-85.9	1,725.2	0.00	0.00	0.00
11,400.0	1.54	250.17	11,205.1	-1,724.0	-88.4	1,726.2	0.00	0.00	0.00
11,500.0	1.54	250.17	11,305.0	-1,724.9	-91.0	1,727.3	0.00	0.00	0.00
11,600.0	1.54	250.17	11,405.0	-1,725.8	-93.5	1,728.3	0.00	0.00	0.00
Rollins									
11,619.0	1.54	250.17	11,424.0	-1,726.0	-94.0	1,728.5	0.00	0.00	0.00
11,700.0	1.54	250.17	11,505.0	-1,726.7	-96.0	1,729.4	0.00	0.00	0.00
11,800.0	1.54	250.17	11,604.9	-1,727.6	-98.5	1,730.5	0.00	0.00	0.00
TD @ 11819.1' MD / 11624.0' TVD									
11,819.1	1.54	250.17	11,624.0	-1,727.8	-99.0	1,730.7	0.00	0.00	0.00

Design Targets

Target Name	Dip Angle (°)	Dip Dir. (°)	TVD (usft)	+N/-S (usft)	+E/-W (usft)	Northing (usft)	Easting (usft)	Latitude	Longitude
- hit/miss target									
- Shape									
OHCR - BJ G35 24A-	0.00	0.00	7,862.0	-1,693.9	-5.1	14,413,598.08	2,447,102.05	39.655811	-108.134142
- plan hits target center									
- Point									
PBHL - BJ G35 24A-	0.00	0.00	11,624.0	-1,727.8	-99.0	14,413,561.20	2,447,009.20	39.655718	-108.134476
- plan hits target center									
- Ellipse (radii L100.0 W50.0 on 250.00 azi)									

Database:	EDM 5000.1 Single User Db	Local Co-ordinate Reference:	Well BJU G35 FED 24A-35 496 - Slot BJU G35 FED 24A-35 496
Company:	Caerus Oil & Gas	TVD Reference:	RKB @ 8194.0usft (H&P#329)
Project:	Garfield County, CO	MD Reference:	RKB @ 8194.0usft (H&P#329)
Site:	NPM G35 496 Pad	North Reference:	True
Well:	BJU G35 FED 24A-35 496	Survey Calculation Method:	Minimum Curvature
Wellbore:	Wellbore #1		
Design:	Design #1		

Formations						
Measured Depth (usft)	Vertical Depth (usft)	Name	Lithology	Dip (°)	Dip Direction (°)	
2,571.2	2,517.0	Wasatch				
5,654.1	5,517.0	Wasatch G				
5,949.0	5,804.0	Fort Union				
8,055.7	7,862.0	Ohio Creek				
8,055.7	7,862.0	TOG				
8,297.8	8,104.0	Williams Fork				
11,035.8	10,841.0	Cameo				
11,619.0	11,424.0	Rollins				

Plan Annotations					
Measured Depth (usft)	Vertical Depth (usft)	Local Coordinates			
		+N/-S (usft)	+E/-W (usft)	Comment	
260.0	260.0	0.0	0.0	Build 3° / 100'	
703.9	699.9	-51.4	-0.2	EOB @ 13.32° Inc. / 180.17° Azm	
7,611.8	7,422.1	-1,642.6	-4.9	Drop 3° / 100'	
8,055.7	7,862.0	-1,693.9	-5.1	EOD @ Vertical / Build 1.5° / 100'	
8,158.6	7,964.8	-1,694.4	-6.4	EOB @ 1.54° Inc. / 250.17° Azm	
11,819.1	11,624.0	-1,727.8	-99.0	TD @ 11819.1' MD / 11624.0' TVD	