

LEGEND:

- = PROPOSED WELLHEAD.
- ◆ = TOP OF GAS INTERVAL.
- = TARGET BOTTOM HOLE.
- ▲ = SECTION CORNERS LOCATED. (NAD 83)
- △ = SECTION CORNERS RE-ESTABLISHED. (Not Set on Ground.) (NAD 83)

T4S, R96W, 6th P.M.

1953 Brass Cap,
1.4' High, T-Post,
5/8" Rebar
Lat: 39.666078°
Long: 108.145375°

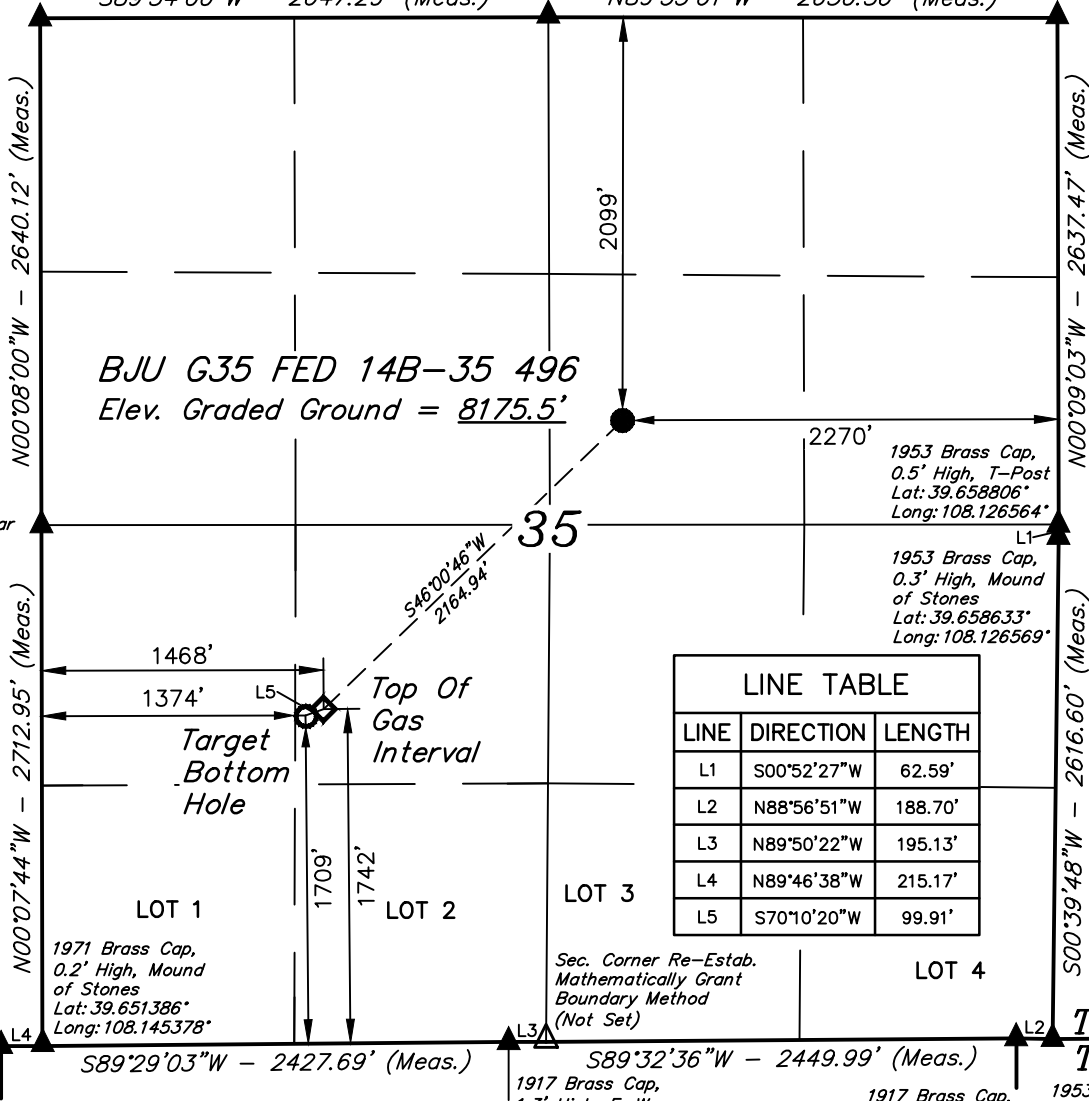
1953 Brass Cap
0.5' High, Mound
of Stones
Lat: 39.666072°
Long: 108.135978°

1953 Brass Cap
0.8' High, Mound
of Stones
Lat: 39.666042°
Long: 108.126567°

BASIS OF BEARINGS

S89°54'00"W - 2647.29' (Meas.)

N89°55'01"W - 2650.56' (Meas.)



BJU G35 FED 14B-35 496
Elev. Graded Ground = 8175.5'

LINE	DIRECTION	LENGTH
L1	S00°52'27"W	62.59'
L2	N88°56'51"W	188.70'
L3	N89°50'22"W	195.13'
L4	N89°46'38"W	215.17'
L5	S70°10'20"W	99.91'

NAD 83 (SURFACE LOCATION)	
LATITUDE = 39°39'37.11" (39.660309)	
LONGITUDE = 108°08'04.64" (108.134623)	
NAD 27 (SURFACE LOCATION)	
LATITUDE = 39°39'37.20" (39.660333)	
LONGITUDE = 108°08'02.36" (108.133988)	
UTM NAD 27 (ZONE 12)	
N: 14415246.36 E: 2447092.85	
NAD 83 (TOP OF GAS INTERVAL)	
LATITUDE = 39°39'22.30" (39.656193)	
LONGITUDE = 108°08'24.60" (108.140166)	
NAD 27 (TOP OF GAS INTERVAL)	
LATITUDE = 39°39'22.38" (39.656217)	
LONGITUDE = 108°08'22.31" (108.139531)	
UTM NAD 27 (ZONE 12)	
N: 14413697.71 E: 2445580.27	

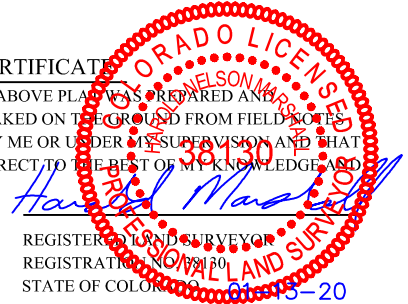
PDOP = 1.4

NAD 83 (TARGET BOTTOM HOLE)	
LATITUDE = 39°39'21.96" (39.656101)	
LONGITUDE = 108°08'25.80" (108.140500)	
NAD 27 (TARGET BOTTOM HOLE)	
LATITUDE = 39°39'22.05" (39.656125)	
LONGITUDE = 108°08'23.51" (108.139865)	
UTM NAD 27 (ZONE 12)	
N: 14413661.08 E: 2445487.33	



CERTIFICATE

THIS IS TO CERTIFY THAT THE ABOVE PLAT WAS PREPARED AND THE LOCATION AS SHOWN WAS STAKED ON THE GROUND FROM FIELD NOTES OF ACTUAL SURVEYS MADE BY ME OR UNDER MY SUPERVISION AND THAT THE SAME ARE TRUE AND CORRECT TO THE BEST OF MY KNOWLEDGE AND BELIEF.



BASIS OF BEARINGS
BEARINGS ARE A BASED ASSUMPTION THAT THE NORTH LINE OF THE NORTHEAST 1/4 OF SECTION 35 BEARS N89°55'01"W. MONUMENTS DESCRIBED HEREON.

BASIS OF ELEVATION
BENCH MARK (H79) LOCATED IN THE NE 1/4 OF SECTION 35, T4S, R96W, 6th P.M., TAKEN FROM THE BULL FORK, QUADRANGLE, COLORADO, 7.5 MINUTE QUAD. (TOPOGRAPHIC MAP) PUBLISHED BY THE UNITED STATES DEPARTMENT OF THE INTERIOR, GEOLOGICAL SURVEY. SAID ELEVATION IS MARKED AS BEING 8535 FEET.



UELS, LLC
Corporate Office * 85 South 200 East
Vernal, UT 84078 * (435) 789-1017



Caerus Oil & Gas LLC

BJU G35 FED 14B-35 496
SW 1/4 NE 1/4, SECTION 35, T4S, R96W, 6th P.M.
GARFIELD COUNTY, COLORADO

SURVEYED BY	DAYTON SLAGH, K.C.	10-08-19	SCALE
DRAWN BY	M.D.	10-11-19	1" = 1000'

WELL LOCATION PLAT