

# LEGEND:

- = PROPOSED WELLHEAD.
- ◆ = TOP OF GAS INTERVAL.
- = TARGET BOTTOM HOLE.
- ▲ = SECTION CORNERS LOCATED. (NAD 83)
- △ = SECTION CORNERS RE-ESTABLISHED. (Not Set on Ground.) (NAD 83)

T4S, R96W, 6th P.M.

1953 Brass Cap,  
1.4' High, T-Post,  
5/8" Rebar  
Lat: 39.666078°  
Long: 108.145375°

1953 Brass Cap  
0.5' High, Mound  
of Stones  
Lat: 39.666072°  
Long: 108.135978°

1953 Brass Cap  
0.8' High, Mound  
of Stones  
Lat: 39.666042°  
Long: 108.126567°

## BASIS OF BEARINGS

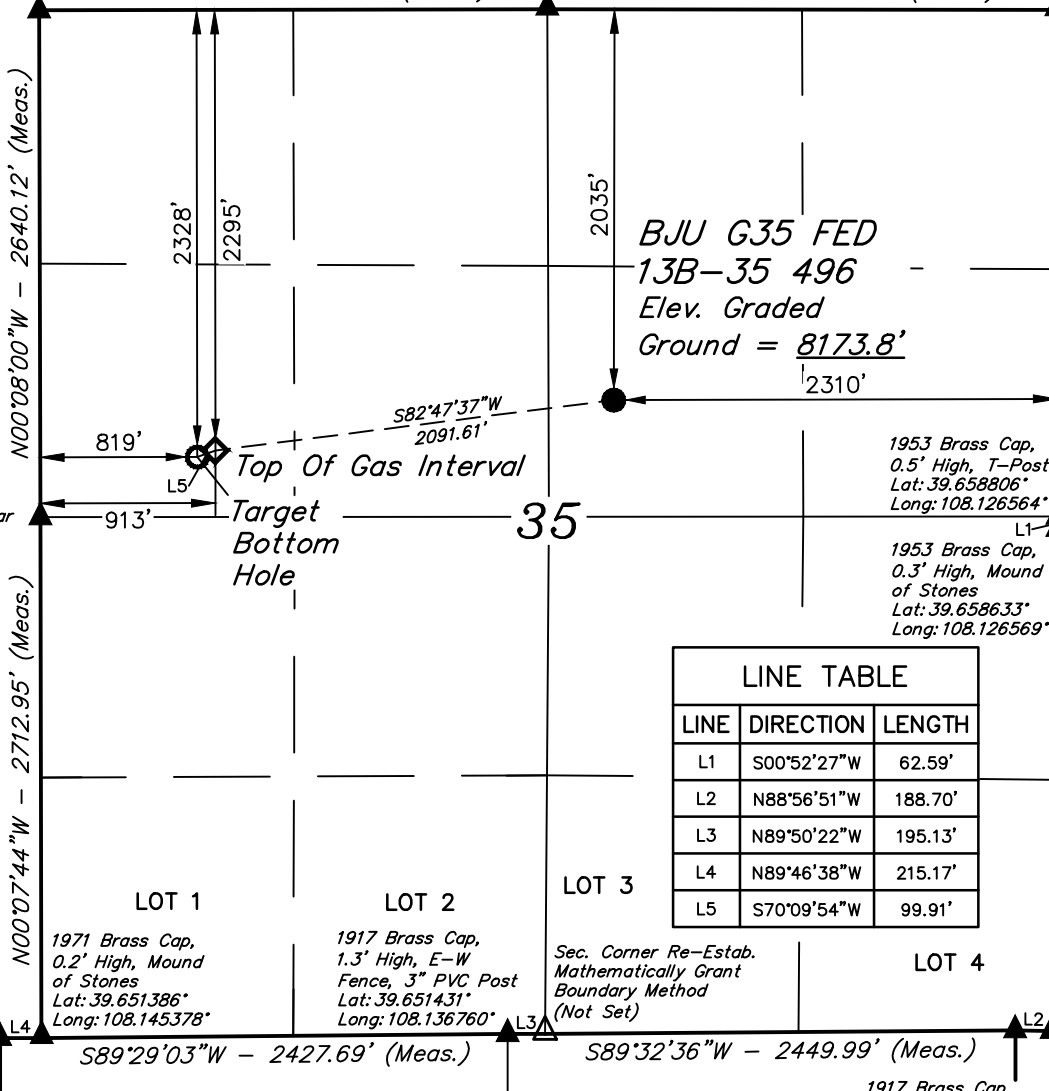
S89°54'00"W - 2647.29' (Meas.)

N89°55'01"W - 2650.56' (Meas.)

N00°09'03"W - 2637.47' (Meas.)

S00°39'48"W - 2616.60' (Meas.)

T4S  
T5S



1953 Brass Cap,  
0.6' High, Stones,  
T-Post, 5/8" Rebar  
Lat: 39.658831°  
Long: 108.145378°

1953 Brass Cap,  
0.5' High, T-Post  
Lat: 39.658806°  
Long: 108.126564°

1953 Brass Cap,  
0.3' High, Mound  
of Stones  
Lat: 39.658633°  
Long: 108.126569°

1953 Brass Cap,  
0.2' High, E-W  
Fence, Mound of  
Stones, T-Post  
Lat: 39.651392°  
Long: 108.146142°

1971 Brass Cap,  
0.2' High, Mound  
of Stones  
Lat: 39.651386°  
Long: 108.145378°

1917 Brass Cap,  
1.3' High, E-W  
Fence, 3" PVC Post  
Lat: 39.651431°  
Long: 108.136760°

Sec. Corner Re-Estab.  
Mathematically Grant  
Boundary Method  
(Not Set)

1917 Brass Cap,  
1.8' High, E-W  
Fence, T-Post  
Lat: 39.651464°  
Long: 108.127369°

1953 Brass Cap,  
0.8' High, N-E-W  
Fence, 3" PVC Post  
Lat: 39.651453°  
Long: 108.126700°

NAD 83 (SURFACE LOCATION)	
LATITUDE = 39°39'37.74" (39.660485)	
LONGITUDE = 108°08'05.16" (108.134766)	
NAD 27 (SURFACE LOCATION)	
LATITUDE = 39°39'37.83" (39.660509)	
LONGITUDE = 108°08'02.87" (108.134131)	
UTM NAD 27 (ZONE 12)	
N: 14415309.11 E: 2447050.58	
NAD 83 (TOP OF GAS INTERVAL)	
LATITUDE = 39°39'35.20" (39.659778)	
LONGITUDE = 108°08'31.69" (108.142136)	
NAD 27 (TOP OF GAS INTERVAL)	
LATITUDE = 39°39'35.29" (39.659803)	
LONGITUDE = 108°08'29.40" (108.141500)	
UTM NAD 27 (ZONE 12)	
N: 14414985.76 E: 2444984.29	

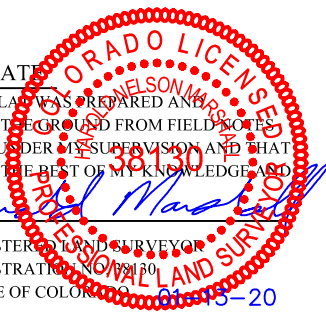
PDOP = 1.4



## CERTIFICATE

THIS IS TO CERTIFY THAT THE ABOVE PLAT WAS PREPARED AND LOCATION AS SHOWN WAS STAKED ON THE GROUND FROM FIELD NOTES OF ACTUAL SURVEYS MADE BY ME OR UNDER MY SUPERVISION AND THAT THE SAME ARE TRUE AND CORRECT TO THE BEST OF MY KNOWLEDGE AND BELIEF.

REGISTERED LAND SURVEYOR  
REGISTRATION NO. 38130  
STATE OF COLORADO



## BASIS OF BEARINGS

BEARINGS ARE A BASED ASSUMPTION THAT THE NORTH LINE OF THE NORTHEAST 1/4 OF SECTION 35 BEARS N89°55'01"W. MONUMENTS DESCRIBED HEREON.

## BASIS OF ELEVATION

BENCH MARK (H79) LOCATED IN THE NE 1/4 OF SECTION 35, T4S, R96W, 6th P.M., TAKEN FROM THE BULL FORK, QUADRANGLE, COLORADO, 7.5 MINUTE QUAD. (TOPOGRAPHIC MAP) PUBLISHED BY THE UNITED STATES DEPARTMENT OF THE INTERIOR, GEOLOGICAL SURVEY. SAID ELEVATION IS MARKED AS BEING 8535 FEET.



UELS, LLC  
Corporate Office \* 85 South 200 East  
Vernal, UT 84078 \* (435) 789-1017



## Caerus Oil & Gas LLC

BJU G35 FED 13B-35 496  
SW 1/4 NE 1/4, SECTION 35, T4S, R96W, 6th P.M.  
GARFIELD COUNTY, COLORADO

SURVEYED BY	DAYTON SLAGH, K.C.	10-08-19	SCALE
DRAWN BY	M.D.	01-13-20	1" = 1000'
WELL LOCATION PLAT			