

Project: Garfield County, CO  
 Site: NPM G35 496 Pad  
 Well: BJU G35 FED 12D-35 496  
 Wellbore: Wellbore #1  
 Design: Design #1  
 Latitude: 39.660618  
 Longitude: -108.134294  
 Ground Level: 8164.0  
 RKB @ 8194.0usft (H&P#329)

FORMATION TOP DETAILS			
TVDPath	MDPath	Formation	
2527.0	2632.9	Wasatch	
5527.0	5831.2	Wasatch G	
5807.0	6129.7	Fort Union	
7810.0	8235.3	Ohio Creek	
7810.0	8235.3	TOG	
8057.0	8482.4	Williams Fork	
10794.0	11220.4	Cameo	
11392.0	11818.6	Rollins	

#### REFERENCE INFORMATION

Co-ordinate (N/E) Reference: Well BJU G35 FED 12D-35 496 - Slot BJU G35 FED 12D-35 496, True North  
 Vertical (TVD) Reference: RKB @ 8194.0usft (H&P#329)  
 Section (VS) Reference: Slot - BJU G35 FED 12D-35 496(0.0N, 0.0E)  
 Measured Depth Reference: RKB @ 8194.0usft (H&P#329)  
 Calculation Method: Minimum Curvature

#### WELL DETAILS: BJU G35 FED 12D-35 496

8164.0  
 +N/-S 0.0 +E/-W 0.0 Northing 14415347.40 Easting 2447003.30 Latitude 39.660618 Longitude BJU 12D-35 496

#### PROJECT DETAILS: Garfield County, CO

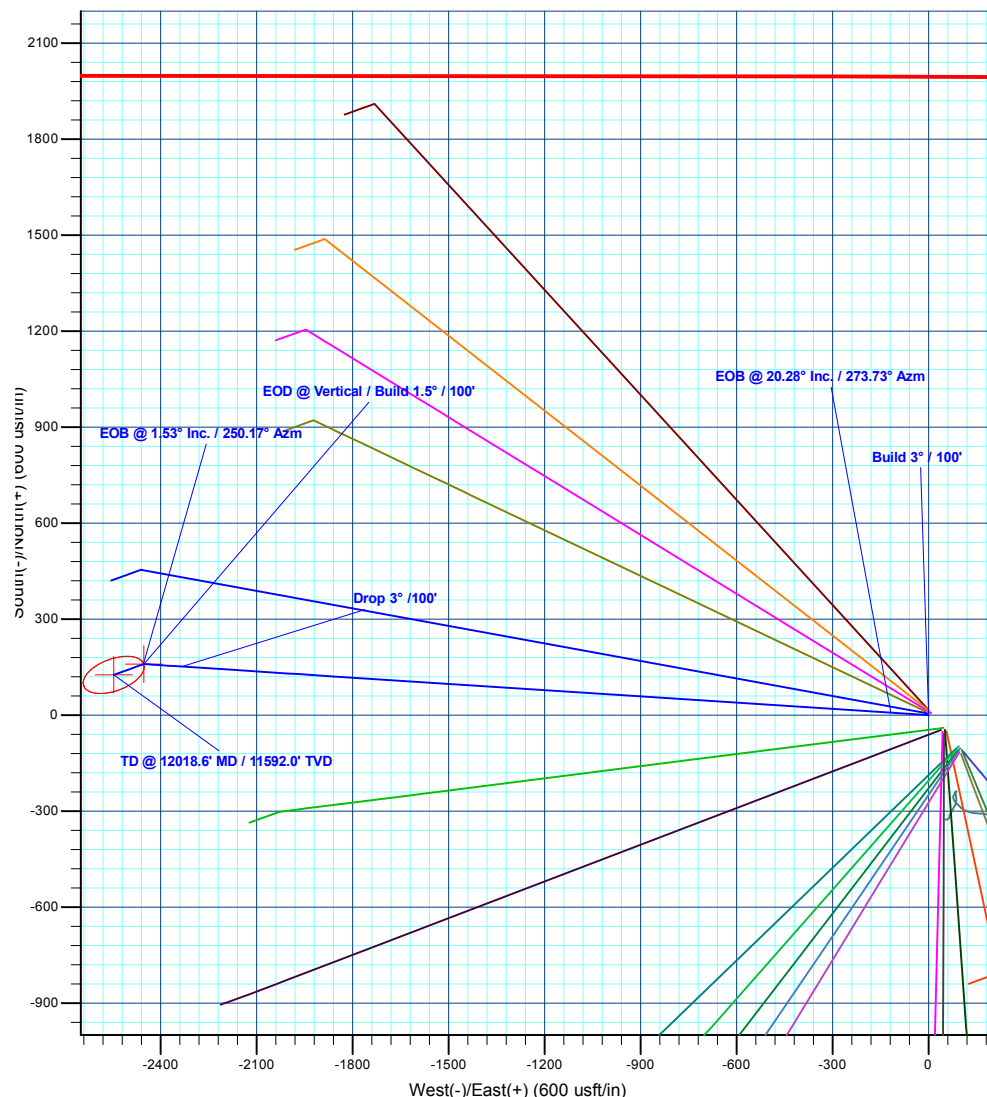
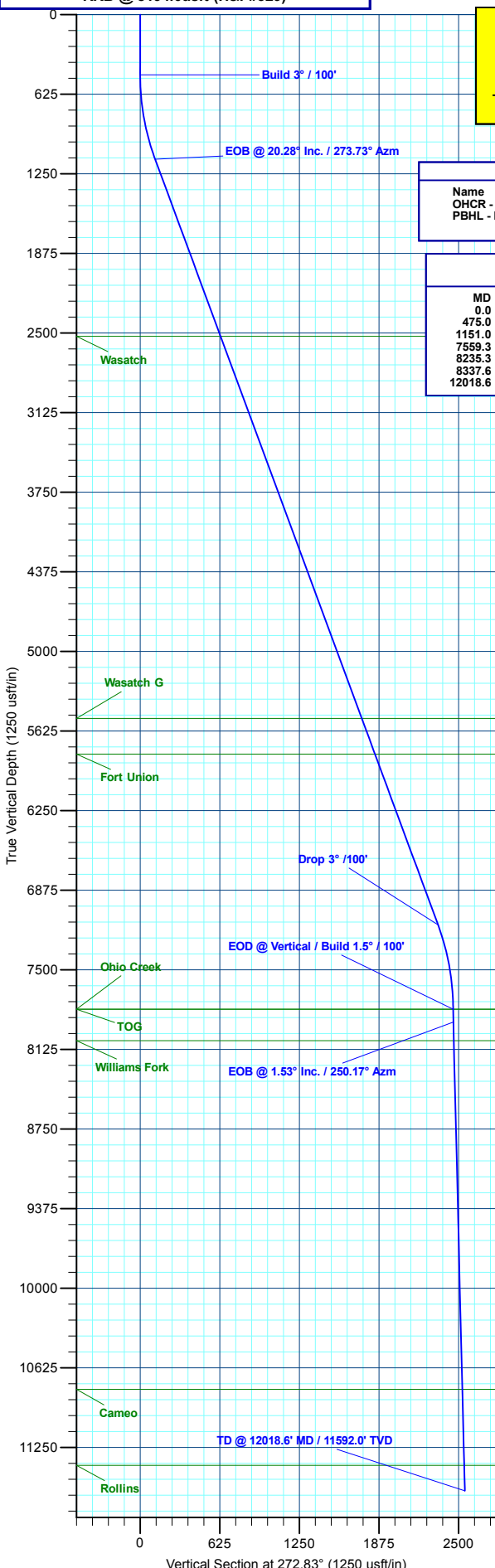
Geodetic System: Universal Transverse Mercator (US Survey Feet)  
 Datum: NAD 1927 - Western US  
 Ellipsoid: Clarke 1866  
 Zone: Zone 12N (114 W to 108 W)  
 System Datum: Mean Sea Level

#### DESIGN TARGET DETAILS

Name	OHCR - BJ G35 12D-35 496	TVD	+N/-S	+E/-W	Northing	Easting	Latitude	Longitude
PBHL - BJ G35 12D-35 496		11592.0	125.8	-2546.8	14415391.80	2444453.80	39.660963	-108.143337

#### SECTION DETAILS

MD	Inc	Azi	TVD	+N/-S	+E/-W	Dleg	TFace	VSect	Annotation
0.0	0.00	0.00	0.0	0.0	0.0	0.00	0.00	0.0	
475.0	0.00	0.00	475.0	0.0	0.0	0.00	0.00	0.0	Build 3° / 100'
1151.0	20.28	273.73	1137.0	7.7	-118.1	3.00	273.73	118.4	EOB @ 20.28° Inc. / 273.73° Azm
7559.3	20.28	273.73	7148.0	152.0	-2334.7	0.00	0.00	2339.7	Drop 3° / 100'
8235.3	0.00	0.00	7810.0	159.7	-2452.8	3.00	180.00	2457.7	EOD @ Vertical / Build 1.5° / 100'
8337.6	1.53	250.17	7912.2	159.2	-2454.1	1.50	250.17	2459.0	EOB @ 1.53° Inc. / 250.17° Azm
12018.6	1.53	250.17	11592.0	125.8	-2546.8	0.00	0.00	2549.9	TD @ 12018.6° MD / 11592.0° TVD



Plan: Design #1 (BJU G35 FED 12D-35 496/Wellbore #1)

Created By: Will Jircik

Date: 15:55, December 18 2019



## **Caerus Oil & Gas**

**Garfield County, CO**

**NPM G35 496 Pad**

**BJU G35 FED 12D-35 496 - Slot BJU G35 FED 12D-35 496**

**Wellbore #1**

**Plan: Design #1**

## **QES Well Planning Report**

**18 December, 2019**



<b>Database:</b>	EDM 5000.1 Single User Db	<b>Local Co-ordinate Reference:</b>	Well BJU G35 FED 12D-35 496 - Slot BJU G35 FED 12D-35 496
<b>Company:</b>	Caerus Oil & Gas	<b>TVD Reference:</b>	RKB @ 8194.0usft (H&P#329)
<b>Project:</b>	Garfield County, CO	<b>MD Reference:</b>	RKB @ 8194.0usft (H&P#329)
<b>Site:</b>	NPM G35 496 Pad	<b>North Reference:</b>	True
<b>Well:</b>	BJU G35 FED 12D-35 496	<b>Survey Calculation Method:</b>	Minimum Curvature
<b>Wellbore:</b>	Wellbore #1		
<b>Design:</b>	Design #1		

<b>Project</b>	Garfield County, CO		
<b>Map System:</b>	Universal Transverse Mercator (US Survey Fee	<b>System Datum:</b>	Mean Sea Level
<b>Geo Datum:</b>	NAD 1927 - Western US		
<b>Map Zone:</b>	Zone 12N (114 W to 108 W)		

<b>Site</b>	NPM G35 496 Pad		
<b>Site Position:</b>		<b>Northing:</b>	14,415,354.00 usft
<b>From:</b>	Map	<b>Easting:</b>	2,447,010.80 usft
<b>Position Uncertainty:</b>	0.0 usft	<b>Slot Radius:</b>	13-3/16 "
		<b>Latitude:</b>	39.660635
		<b>Longitude:</b>	-108.134267
		<b>Grid Convergence:</b>	1.83 °

<b>Well</b>	BJU G35 FED 12D-35 496 - Slot BJU G35 FED 12D-35 496		
<b>Well Position</b>	<b>+N/-S</b>	-6.4 usft	<b>Northing:</b> 14,415,347.40 usft
	<b>+E/-W</b>	-7.7 usft	<b>Easting:</b> 2,447,003.30 usft
<b>Position Uncertainty</b>	0.0 usft	<b>Wellhead Elevation:</b>	<b>Latitude:</b> 39.660618
			<b>Longitude:</b> -108.134294
			<b>Ground Level:</b> 8,164.0 usft

<b>Wellbore</b>	Wellbore #1				
<b>Magnetics</b>	<b>Model Name</b>	<b>Sample Date</b>	<b>Declination (°)</b>	<b>Dip Angle (°)</b>	<b>Field Strength (nT)</b>
	HDGM_FILE	12/11/2019	9.48	65.83	51,250.20000000

<b>Design</b>	Design #1				
<b>Audit Notes:</b>					
<b>Version:</b>	<b>Phase:</b>	PLAN	<b>Tie On Depth:</b>	0.0	
<b>Vertical Section:</b>	<b>Depth From (TVD) (usft)</b>	<b>+N/-S (usft)</b>	<b>+E/-W (usft)</b>	<b>Direction (°)</b>	
	0.0	0.0	0.0	272.83	

Plan Sections										
Measured Depth (usft)	Inclination (°)	Azimuth (°)	Vertical Depth (usft)	+N/-S (usft)	+E/-W (usft)	Dogleg Rate (°/100usft)	Build Rate (°/100usft)	Turn Rate (°/100usft)	TFO (°)	Target
0.0	0.00	0.00	0.0	0.0	0.0	0.00	0.00	0.00	0.00	
475.0	0.00	0.00	475.0	0.0	0.0	0.00	0.00	0.00	0.00	
1,151.0	20.28	273.73	1,137.0	7.7	-118.1	3.00	3.00	0.00	273.73	
7,559.3	20.28	273.73	7,148.0	152.0	-2,334.7	0.00	0.00	0.00	0.00	
8,235.3	0.00	0.00	7,810.0	159.7	-2,452.8	3.00	-3.00	0.00	180.00	OHCR - BJ G35 12
8,337.6	1.53	250.17	7,912.2	159.2	-2,454.1	1.50	1.50	-107.40	250.17	
12,018.6	1.53	250.17	11,592.0	125.8	-2,546.8	0.00	0.00	0.00	0.00	PBHL - BJ G35 12I

<b>Database:</b>	EDM 5000.1 Single User Db	<b>Local Co-ordinate Reference:</b>	Well BJU G35 FED 12D-35 496 - Slot BJU G35 FED 12D-35 496
<b>Company:</b>	Caerus Oil & Gas	<b>TVD Reference:</b>	RKB @ 8194.0usft (H&P#329)
<b>Project:</b>	Garfield County, CO	<b>MD Reference:</b>	RKB @ 8194.0usft (H&P#329)
<b>Site:</b>	NPM G35 496 Pad	<b>North Reference:</b>	True
<b>Well:</b>	BJU G35 FED 12D-35 496	<b>Survey Calculation Method:</b>	Minimum Curvature
<b>Wellbore:</b>	Wellbore #1		
<b>Design:</b>	Design #1		

**Planned Survey**

Measured Depth (usft)	Inclination (°)	Azimuth (°)	Vertical Depth (usft)	+N/-S (usft)	+E/-W (usft)	Vertical Section (usft)	Dogleg Rate (°/100usft)	Build Rate (°/100usft)	Turn Rate (°/100usft)
0.0	0.00	0.00	0.0	0.0	0.0	0.0	0.00	0.00	0.00
100.0	0.00	0.00	100.0	0.0	0.0	0.0	0.00	0.00	0.00
200.0	0.00	0.00	200.0	0.0	0.0	0.0	0.00	0.00	0.00
300.0	0.00	0.00	300.0	0.0	0.0	0.0	0.00	0.00	0.00
400.0	0.00	0.00	400.0	0.0	0.0	0.0	0.00	0.00	0.00
<b>Build 3° / 100'</b>									
475.0	0.00	0.00	475.0	0.0	0.0	0.0	0.00	0.00	0.00
500.0	0.75	273.73	500.0	0.0	-0.2	0.2	3.00	3.00	0.00
600.0	3.75	273.73	599.9	0.3	-4.1	4.1	3.00	3.00	0.00
700.0	6.75	273.73	699.5	0.9	-13.2	13.2	3.00	3.00	0.00
800.0	9.75	273.73	798.4	1.8	-27.5	27.6	3.00	3.00	0.00
900.0	12.75	273.73	896.5	3.1	-47.0	47.1	3.00	3.00	0.00
1,000.0	15.75	273.73	993.4	4.7	-71.6	71.7	3.00	3.00	0.00
1,100.0	18.75	273.73	1,088.9	6.6	-101.1	101.3	3.00	3.00	0.00
<b>EOB @ 20.28° Inc. / 273.73° Azm</b>									
1,151.0	20.28	273.73	1,137.0	7.7	-118.1	118.4	3.00	3.00	0.00
1,200.0	20.28	273.73	1,182.9	8.8	-135.1	135.4	0.00	0.00	0.00
1,300.0	20.28	273.73	1,276.7	11.0	-169.7	170.0	0.00	0.00	0.00
1,400.0	20.28	273.73	1,370.5	13.3	-204.3	204.7	0.00	0.00	0.00
1,500.0	20.28	273.73	1,464.3	15.6	-238.9	239.3	0.00	0.00	0.00
1,600.0	20.28	273.73	1,558.1	17.8	-273.4	274.0	0.00	0.00	0.00
1,700.0	20.28	273.73	1,651.9	20.1	-308.0	308.6	0.00	0.00	0.00
1,800.0	20.28	273.73	1,745.7	22.3	-342.6	343.3	0.00	0.00	0.00
1,900.0	20.28	273.73	1,839.5	24.6	-377.2	378.0	0.00	0.00	0.00
2,000.0	20.28	273.73	1,933.3	26.8	-411.8	412.6	0.00	0.00	0.00
2,100.0	20.28	273.73	2,027.1	29.1	-446.4	447.3	0.00	0.00	0.00
2,200.0	20.28	273.73	2,120.9	31.3	-481.0	481.9	0.00	0.00	0.00
2,300.0	20.28	273.73	2,214.7	33.6	-515.6	516.6	0.00	0.00	0.00
2,400.0	20.28	273.73	2,308.5	35.8	-550.1	551.2	0.00	0.00	0.00
2,500.0	20.28	273.73	2,402.3	38.1	-584.7	585.9	0.00	0.00	0.00
2,600.0	20.28	273.73	2,496.1	40.3	-619.3	620.6	0.00	0.00	0.00
<b>Wasatch</b>									
2,632.9	20.28	273.73	2,527.0	41.1	-630.7	632.0	0.00	0.00	0.00
2,700.0	20.28	273.73	2,589.9	42.6	-653.9	655.2	0.00	0.00	0.00
2,800.0	20.28	273.73	2,683.7	44.8	-688.5	689.9	0.00	0.00	0.00
2,900.0	20.28	273.73	2,777.5	47.1	-723.1	724.5	0.00	0.00	0.00
3,000.0	20.28	273.73	2,871.3	49.3	-757.7	759.2	0.00	0.00	0.00
3,100.0	20.28	273.73	2,965.2	51.6	-792.3	793.8	0.00	0.00	0.00
3,200.0	20.28	273.73	3,059.0	53.8	-826.9	828.5	0.00	0.00	0.00
3,300.0	20.28	273.73	3,152.8	56.1	-861.4	863.2	0.00	0.00	0.00
3,400.0	20.28	273.73	3,246.6	58.3	-896.0	897.8	0.00	0.00	0.00
3,500.0	20.28	273.73	3,340.4	60.6	-930.6	932.5	0.00	0.00	0.00
3,600.0	20.28	273.73	3,434.2	62.8	-965.2	967.1	0.00	0.00	0.00
3,700.0	20.28	273.73	3,528.0	65.1	-999.8	1,001.8	0.00	0.00	0.00
3,800.0	20.28	273.73	3,621.8	67.3	-1,034.4	1,036.4	0.00	0.00	0.00
3,900.0	20.28	273.73	3,715.6	69.6	-1,069.0	1,071.1	0.00	0.00	0.00
4,000.0	20.28	273.73	3,809.4	71.8	-1,103.6	1,105.8	0.00	0.00	0.00
4,100.0	20.28	273.73	3,903.2	74.1	-1,138.1	1,140.4	0.00	0.00	0.00
4,200.0	20.28	273.73	3,997.0	76.4	-1,172.7	1,175.1	0.00	0.00	0.00
4,300.0	20.28	273.73	4,090.8	78.6	-1,207.3	1,209.7	0.00	0.00	0.00
4,400.0	20.28	273.73	4,184.6	80.9	-1,241.9	1,244.4	0.00	0.00	0.00
4,500.0	20.28	273.73	4,278.4	83.1	-1,276.5	1,279.0	0.00	0.00	0.00
4,600.0	20.28	273.73	4,372.2	85.4	-1,311.1	1,313.7	0.00	0.00	0.00

<b>Database:</b>	EDM 5000.1 Single User Db	<b>Local Co-ordinate Reference:</b>	Well BJU G35 FED 12D-35 496 - Slot BJU G35 FED 12D-35 496
<b>Company:</b>	Caerus Oil & Gas	<b>TVD Reference:</b>	RKB @ 8194.0usft (H&P#329)
<b>Project:</b>	Garfield County, CO	<b>MD Reference:</b>	RKB @ 8194.0usft (H&P#329)
<b>Site:</b>	NPM G35 496 Pad	<b>North Reference:</b>	True
<b>Well:</b>	BJU G35 FED 12D-35 496	<b>Survey Calculation Method:</b>	Minimum Curvature
<b>Wellbore:</b>	Wellbore #1		
<b>Design:</b>	Design #1		

## Planned Survey

Measured Depth (usft)	Inclination (°)	Azimuth (°)	Vertical Depth (usft)	+N/-S (usft)	+E/-W (usft)	Vertical Section (usft)	Dogleg Rate (°/100usft)	Build Rate (°/100usft)	Turn Rate (°/100usft)
4,700.0	20.28	273.73	4,466.0	87.6	-1,345.7	1,348.4	0.00	0.00	0.00
4,800.0	20.28	273.73	4,559.8	89.9	-1,380.3	1,383.0	0.00	0.00	0.00
4,900.0	20.28	273.73	4,653.6	92.1	-1,414.9	1,417.7	0.00	0.00	0.00
5,000.0	20.28	273.73	4,747.4	94.4	-1,449.4	1,452.3	0.00	0.00	0.00
5,100.0	20.28	273.73	4,841.2	96.6	-1,484.0	1,487.0	0.00	0.00	0.00
5,200.0	20.28	273.73	4,935.0	98.9	-1,518.6	1,521.6	0.00	0.00	0.00
5,300.0	20.28	273.73	5,028.8	101.1	-1,553.2	1,556.3	0.00	0.00	0.00
5,400.0	20.28	273.73	5,122.6	103.4	-1,587.8	1,591.0	0.00	0.00	0.00
5,500.0	20.28	273.73	5,216.4	105.6	-1,622.4	1,625.6	0.00	0.00	0.00
5,600.0	20.28	273.73	5,310.2	107.9	-1,657.0	1,660.3	0.00	0.00	0.00
5,700.0	20.28	273.73	5,404.0	110.1	-1,691.6	1,694.9	0.00	0.00	0.00
5,800.0	20.28	273.73	5,497.8	112.4	-1,726.1	1,729.6	0.00	0.00	0.00
<b>Wasatch G</b>									
5,831.2	20.28	273.73	5,527.0	113.1	-1,736.9	1,740.4	0.00	0.00	0.00
5,900.0	20.28	273.73	5,591.6	114.6	-1,760.7	1,764.2	0.00	0.00	0.00
6,000.0	20.28	273.73	5,685.4	116.9	-1,795.3	1,798.9	0.00	0.00	0.00
6,100.0	20.28	273.73	5,779.2	119.1	-1,829.9	1,833.6	0.00	0.00	0.00
<b>Fort Union</b>									
6,129.7	20.28	273.73	5,807.0	119.8	-1,840.2	1,843.8	0.00	0.00	0.00
6,200.0	20.28	273.73	5,873.0	121.4	-1,864.5	1,868.2	0.00	0.00	0.00
6,300.0	20.28	273.73	5,966.8	123.6	-1,899.1	1,902.9	0.00	0.00	0.00
6,400.0	20.28	273.73	6,060.6	125.9	-1,933.7	1,937.5	0.00	0.00	0.00
6,500.0	20.28	273.73	6,154.4	128.1	-1,968.3	1,972.2	0.00	0.00	0.00
6,600.0	20.28	273.73	6,248.2	130.4	-2,002.8	2,006.8	0.00	0.00	0.00
6,700.0	20.28	273.73	6,342.0	132.6	-2,037.4	2,041.5	0.00	0.00	0.00
6,800.0	20.28	273.73	6,435.8	134.9	-2,072.0	2,076.2	0.00	0.00	0.00
6,900.0	20.28	273.73	6,529.6	137.2	-2,106.6	2,110.8	0.00	0.00	0.00
7,000.0	20.28	273.73	6,623.4	139.4	-2,141.2	2,145.5	0.00	0.00	0.00
7,100.0	20.28	273.73	6,717.2	141.7	-2,175.8	2,180.1	0.00	0.00	0.00
7,200.0	20.28	273.73	6,811.0	143.9	-2,210.4	2,214.8	0.00	0.00	0.00
7,300.0	20.28	273.73	6,904.8	146.2	-2,245.0	2,249.4	0.00	0.00	0.00
7,400.0	20.28	273.73	6,998.6	148.4	-2,279.6	2,284.1	0.00	0.00	0.00
7,500.0	20.28	273.73	7,092.4	150.7	-2,314.1	2,318.8	0.00	0.00	0.00
<b>Drop 3° /100'</b>									
7,559.3	20.28	273.73	7,148.0	152.0	-2,334.7	2,339.3	0.00	0.00	0.00
7,600.0	19.06	273.73	7,186.3	152.9	-2,348.3	2,353.0	3.00	-3.00	0.00
7,700.0	16.06	273.73	7,281.7	154.8	-2,378.4	2,383.2	3.00	-3.00	0.00
7,800.0	13.06	273.73	7,378.4	156.5	-2,403.5	2,408.3	3.00	-3.00	0.00
7,900.0	10.06	273.73	7,476.4	157.8	-2,423.5	2,428.3	3.00	-3.00	0.00
8,000.0	7.06	273.73	7,575.3	158.8	-2,438.4	2,443.2	3.00	-3.00	0.00
8,100.0	4.06	273.73	7,674.8	159.4	-2,448.0	2,452.9	3.00	-3.00	0.00
8,200.0	1.06	273.73	7,774.7	159.7	-2,452.5	2,457.4	3.00	-3.00	0.00
<b>EOD @ Vertical / Build 1.5° / 100' - Ohio Creek - TOG</b>									
8,235.3	0.00	0.00	7,810.0	159.7	-2,452.8	2,457.7	3.00	-3.00	0.00
8,300.0	0.97	250.17	7,874.7	159.5	-2,453.3	2,458.2	1.50	1.50	0.00
<b>EOB @ 1.53° Inc. / 250.17° Azm</b>									
8,337.6	1.53	250.17	7,912.2	159.2	-2,454.1	2,459.0	1.50	1.50	0.00
8,400.0	1.53	250.17	7,974.6	158.7	-2,455.7	2,460.5	0.00	0.00	0.00
<b>Williams Fork</b>									
8,482.4	1.53	250.17	8,057.0	157.9	-2,457.7	2,462.5	0.00	0.00	0.00
8,500.0	1.53	250.17	8,074.6	157.8	-2,458.2	2,463.0	0.00	0.00	0.00
8,600.0	1.53	250.17	8,174.6	156.8	-2,460.7	2,465.4	0.00	0.00	0.00

<b>Database:</b>	EDM 5000.1 Single User Db	<b>Local Co-ordinate Reference:</b>	Well BJU G35 FED 12D-35 496 - Slot BJU G35 FED 12D-35 496
<b>Company:</b>	Caerus Oil & Gas	<b>TVD Reference:</b>	RKB @ 8194.0usft (H&P#329)
<b>Project:</b>	Garfield County, CO	<b>MD Reference:</b>	RKB @ 8194.0usft (H&P#329)
<b>Site:</b>	NPM G35 496 Pad	<b>North Reference:</b>	True
<b>Well:</b>	BJU G35 FED 12D-35 496	<b>Survey Calculation Method:</b>	Minimum Curvature
<b>Wellbore:</b>	Wellbore #1		
<b>Design:</b>	Design #1		

Planned Survey									
Measured Depth (usft)	Inclination (°)	Azimuth (°)	Vertical Depth (usft)	+N/-S (usft)	+E/-W (usft)	Vertical Section (usft)	Dogleg Rate (°/100usft)	Build Rate (°/100usft)	Turn Rate (°/100usft)
8,700.0	1.53	250.17	8,274.5	155.9	-2,463.2	2,467.9	0.00	0.00	0.00
8,800.0	1.53	250.17	8,374.5	155.0	-2,465.7	2,470.4	0.00	0.00	0.00
8,900.0	1.53	250.17	8,474.5	154.1	-2,468.3	2,472.8	0.00	0.00	0.00
9,000.0	1.53	250.17	8,574.4	153.2	-2,470.8	2,475.3	0.00	0.00	0.00
9,100.0	1.53	250.17	8,674.4	152.3	-2,473.3	2,477.8	0.00	0.00	0.00
9,200.0	1.53	250.17	8,774.4	151.4	-2,475.8	2,480.3	0.00	0.00	0.00
9,300.0	1.53	250.17	8,874.3	150.5	-2,478.3	2,482.7	0.00	0.00	0.00
9,400.0	1.53	250.17	8,974.3	149.6	-2,480.8	2,485.2	0.00	0.00	0.00
9,500.0	1.53	250.17	9,074.3	148.7	-2,483.4	2,487.7	0.00	0.00	0.00
9,600.0	1.53	250.17	9,174.2	147.8	-2,485.9	2,490.1	0.00	0.00	0.00
9,700.0	1.53	250.17	9,274.2	146.9	-2,488.4	2,492.6	0.00	0.00	0.00
9,800.0	1.53	250.17	9,374.1	145.9	-2,490.9	2,495.1	0.00	0.00	0.00
9,900.0	1.53	250.17	9,474.1	145.0	-2,493.4	2,497.6	0.00	0.00	0.00
10,000.0	1.53	250.17	9,574.1	144.1	-2,496.0	2,500.0	0.00	0.00	0.00
10,100.0	1.53	250.17	9,674.0	143.2	-2,498.5	2,502.5	0.00	0.00	0.00
10,200.0	1.53	250.17	9,774.0	142.3	-2,501.0	2,505.0	0.00	0.00	0.00
10,300.0	1.53	250.17	9,874.0	141.4	-2,503.5	2,507.4	0.00	0.00	0.00
10,400.0	1.53	250.17	9,973.9	140.5	-2,506.0	2,509.9	0.00	0.00	0.00
10,500.0	1.53	250.17	10,073.9	139.6	-2,508.5	2,512.4	0.00	0.00	0.00
10,600.0	1.53	250.17	10,173.9	138.7	-2,511.1	2,514.8	0.00	0.00	0.00
10,700.0	1.53	250.17	10,273.8	137.8	-2,513.6	2,517.3	0.00	0.00	0.00
10,800.0	1.53	250.17	10,373.8	136.9	-2,516.1	2,519.8	0.00	0.00	0.00
10,900.0	1.53	250.17	10,473.8	136.0	-2,518.6	2,522.3	0.00	0.00	0.00
11,000.0	1.53	250.17	10,573.7	135.0	-2,521.1	2,524.7	0.00	0.00	0.00
11,100.0	1.53	250.17	10,673.7	134.1	-2,523.6	2,527.2	0.00	0.00	0.00
11,200.0	1.53	250.17	10,773.6	133.2	-2,526.2	2,529.7	0.00	0.00	0.00
<b>Cameo</b>									
11,220.4	1.53	250.17	10,794.0	133.0	-2,526.7	2,530.2	0.00	0.00	0.00
11,300.0	1.53	250.17	10,873.6	132.3	-2,528.7	2,532.1	0.00	0.00	0.00
11,400.0	1.53	250.17	10,973.6	131.4	-2,531.2	2,534.6	0.00	0.00	0.00
11,500.0	1.53	250.17	11,073.5	130.5	-2,533.7	2,537.1	0.00	0.00	0.00
11,600.0	1.53	250.17	11,173.5	129.6	-2,536.2	2,539.5	0.00	0.00	0.00
11,700.0	1.53	250.17	11,273.5	128.7	-2,538.8	2,542.0	0.00	0.00	0.00
11,800.0	1.53	250.17	11,373.4	127.8	-2,541.3	2,544.5	0.00	0.00	0.00
<b>Rollins</b>									
11,818.6	1.53	250.17	11,392.0	127.6	-2,541.7	2,544.9	0.00	0.00	0.00
11,900.0	1.53	250.17	11,473.4	126.9	-2,543.8	2,547.0	0.00	0.00	0.00
12,000.0	1.53	250.17	11,573.4	126.0	-2,546.3	2,549.4	0.00	0.00	0.00
<b>TD @ 12018.6' MD / 11592.0' TVD</b>									
12,018.6	1.53	250.17	11,592.0	125.8	-2,546.8	2,549.9	0.00	0.00	0.00

<b>Database:</b>	EDM 5000.1 Single User Db	<b>Local Co-ordinate Reference:</b>	Well BJU G35 FED 12D-35 496 - Slot BJU G35 FED 12D-35 496
<b>Company:</b>	Caerus Oil & Gas	<b>TVD Reference:</b>	RKB @ 8194.0usft (H&P#329)
<b>Project:</b>	Garfield County, CO	<b>MD Reference:</b>	RKB @ 8194.0usft (H&P#329)
<b>Site:</b>	NPM G35 496 Pad	<b>North Reference:</b>	True
<b>Well:</b>	BJU G35 FED 12D-35 496	<b>Survey Calculation Method:</b>	Minimum Curvature
<b>Wellbore:</b>	Wellbore #1		
<b>Design:</b>	Design #1		

### Design Targets

#### Target Name

- hit/miss target - Shape	Dip Angle (°)	Dip Dir. (°)	TVD (usft)	+N/-S (usft)	+E/-W (usft)	Northing (usft)	Easting (usft)	Latitude	Longitude
OHCR - BJ G35 12D- - plan hits target center - Point	0.00	0.00	7,810.0	159.7	-2,452.8	14,415,428.68	2,444,546.65	39.661056	-108.143003
PBHL - BJ G35 12D- - plan hits target center - Ellipse (radii L100.0 W50.0 on 250.00 azi)	0.00	0.00	11,592.0	125.8	-2,546.8	14,415,391.80	2,444,453.80	39.660963	-108.143337

### Formations

Measured Depth (usft)	Vertical Depth (usft)	Name	Lithology	Dip (°)	Dip Direction (°)
2,632.9	2,527.0	Wasatch			
5,831.2	5,527.0	Wasatch G			
6,129.7	5,807.0	Fort Union			
8,235.3	7,810.0	Ohio Creek			
8,235.3	7,810.0	TOG			
8,482.4	8,057.0	Williams Fork			
11,220.4	10,794.0	Cameo			
11,818.6	11,392.0	Rollins			

### Plan Annotations

Measured Depth (usft)	Vertical Depth (usft)	Local Coordinates		Comment
		+N/-S (usft)	+E/-W (usft)	
475.0	475.0	0.0	0.0	Build 3° / 100'
1,151.0	1,137.0	7.7	-118.1	EOB @ 20.28° Inc. / 273.73° Azm
7,559.3	7,148.0	152.0	-2,334.7	Drop 3° / 100'
8,235.3	7,810.0	159.7	-2,452.8	EOD @ Vertical / Build 1.5° / 100'
8,337.6	7,912.2	159.2	-2,454.1	EOB @ 1.53° Inc. / 250.17° Azm
12,018.6	11,592.0	125.8	-2,546.8	TD @ 12018.6' MD / 11592.0' TVD