

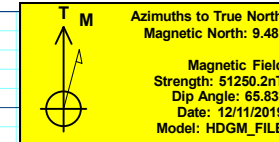
Project: Garfield County, CO
 Site: NPM G35 496 Pad
 Well: BJU G35 FED 12A-35 496
 Wellbore: Wellbore #1
 Design: Design #1
 Latitude: 39.660649
 Longitude: -108.134328
 Ground Level: 8164.0
 RKB @ 8194.0usft (H&P#329)

FORMATION TOP DETAILS		
TVDPATH	MDPATH	FORMATION
2564.0	2650.3	Wasatch
5834.0	5781.7	Wasatch G
5834.0	6063.6	Fort Union
7862.0	8164.2	Ohio Creek
7862.0	8164.2	TOG
8109.0	8411.3	Williams Fork
10864.0	11167.3	Cameo
11458.0	11761.5	Rollins

REFERENCE INFORMATION	
Co-ordinate (N/E)	Reference: Well BJU G35 FED 12A-35 496 - Slot BJU G35 FED 12A-35 496, True North
Vertical (TVD)	Reference: RKB @ 8194.0usft (H&P#329)
Section (VS)	Reference: Slot - BJU G35 FED 12A-35 496(0.0N, 0.0E)
Measured Depth	Reference: RKB @ 8194.0usft (H&P#329)
	Calculation Method: Minimum Curvature

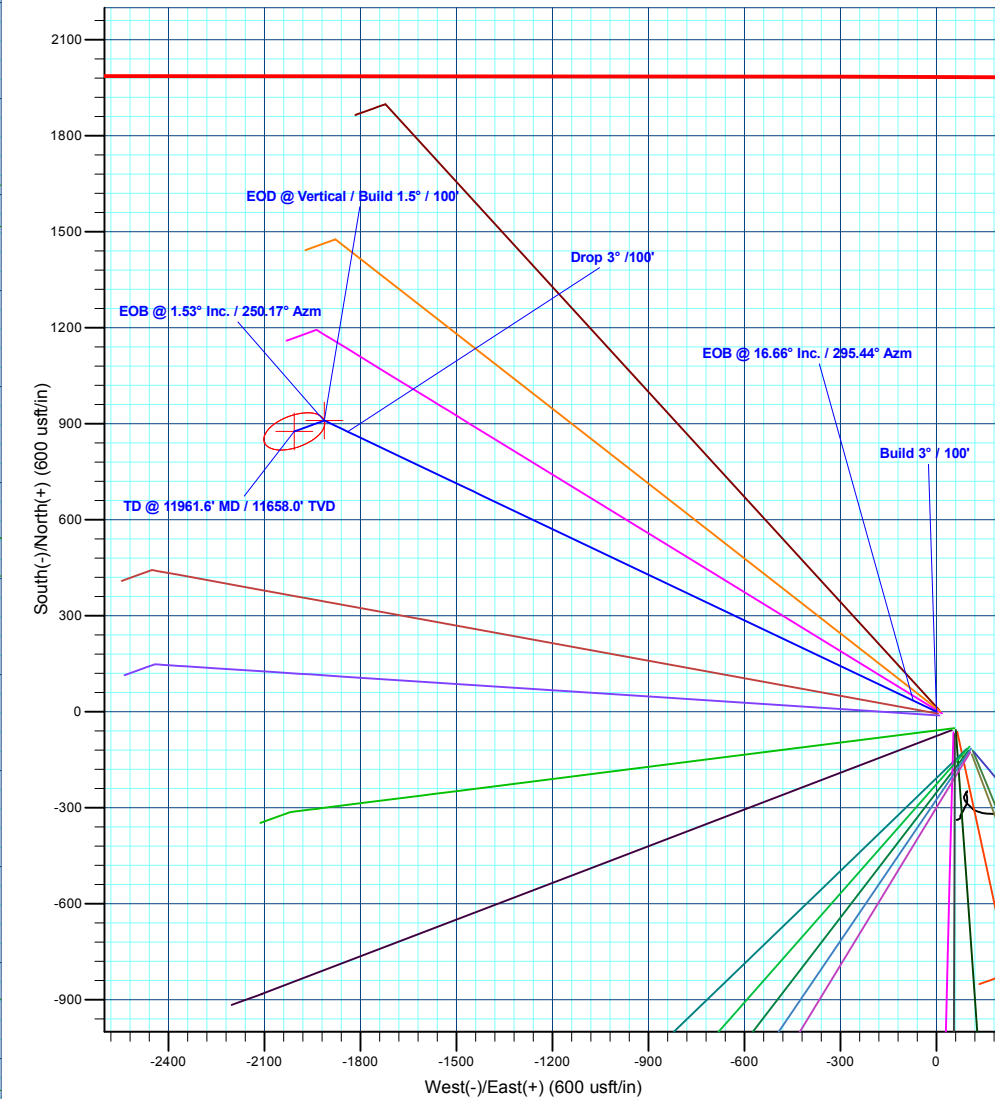
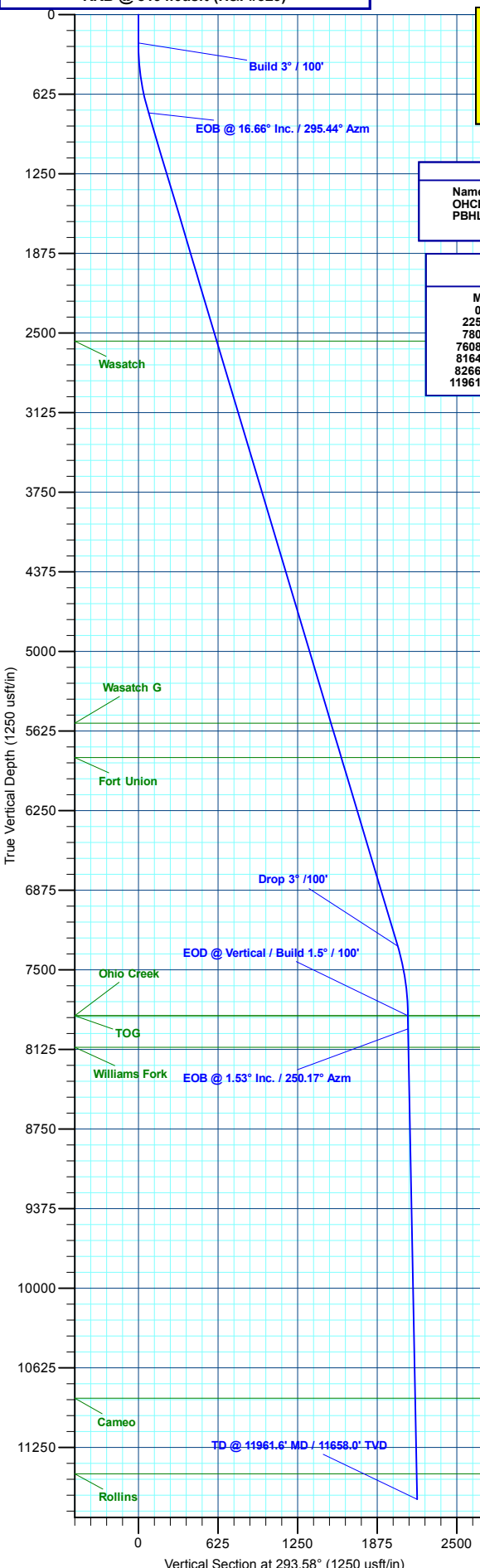
WELL DETAILS: BJU G35 FED 12A-35 496					
			8164.0		
+N/-S	+E/-W	Northing	Easting	Latitude	Longitude
0.0	0.0	14415358.60	2446993.30	39.660649	-108.134328

PROJECT DETAILS: Garfield County, CO	
Geodetic System:	Universal Transverse Mercator (US Survey Feet)
Datum:	NAD 1927 - Western US
Ellipsoid:	Clarke 1866
Zone:	Zone 12N (114 W to 108 W)
System Datum:	Mean Sea Level



DESIGN TARGET DETAILS							
Name	TVD	+N/-S	+E/-W	Northing	Easting	Latitude	Longitude
OHCR - BJ G35 12A-35 496	7862.0	909.9	-1912.7	14416206.98	2445052.55	39.663146	-108.141120
PBHL - BJ G35 12A-35 496	11658.0	876.0	-2006.6	14416170.10	2444959.70	39.663053	-108.141453

SECTION DETAILS										
MD	Inc	Azi	TVD	+N/-S	+E/-W	Dleg	TFace	VSect	Annotation	
0.0	0.00	0.00	0.0	0.0	0.0	0.00	0.00	0.0		
225.0	0.00	0.00	225.0	0.0	0.0	0.00	0.00	0.0	Build 3° / 100'	
780.3	16.66	295.44	772.6	34.4	-72.4	3.00	295.44	80.1	EOB @ 16.66° Inc. / 295.44° Azm	
7608.9	16.66	295.44	7314.4	875.5	-1840.3	0.00	0.00	2036.8	Drop 3° / 100'	
8164.2	0.00	0.00	8164.0	909.9	-1912.7	3.00	180.00	2117.0	EOD @ Vertical / Build 1.5° / 100'	
8266.1	1.53	250.17	7963.9	909.5	-1913.9	1.50	250.17	2118.0	EOB @ 1.53° Inc. / 250.17° Azm	
11961.6	1.53	250.17	11658.0	876.0	-2006.6	0.00	0.00	2189.5	TD @ 11961.6' MD / 11658.0' TVD	



Plan: Design #1 (BJU G35 FED 12A-35 496/Wellbore #1)
 Created By: Will Jircik Date: 15:46, December 18 2019



Caerus Oil & Gas

Garfield County, CO

NPM G35 496 Pad

BJU G35 FED 12A-35 496 - Slot BJU G35 FED 12A-35 496

Wellbore #1

Plan: Design #1

QES Well Planning Report

18 December, 2019



Database:	EDM 5000.1 Single User Db	Local Co-ordinate Reference:	Well BJU G35 FED 12A-35 496 - Slot BJU G35 FED 12A-35 496
Company:	Caerus Oil & Gas	TVD Reference:	RKB @ 8194.0usft (H&P#329)
Project:	Garfield County, CO	MD Reference:	RKB @ 8194.0usft (H&P#329)
Site:	NPM G35 496 Pad	North Reference:	True
Well:	BJU G35 FED 12A-35 496	Survey Calculation Method:	Minimum Curvature
Wellbore:	Wellbore #1		
Design:	Design #1		

Project	Garfield County, CO		
Map System:	Universal Transverse Mercator (US Survey Fee	System Datum:	Mean Sea Level
Geo Datum:	NAD 1927 - Western US		
Map Zone:	Zone 12N (114 W to 108 W)		

Site	NPM G35 496 Pad				
Site Position:		Northing:	14,415,354.00 usft	Latitude:	39.660635
From:	Map	Easting:	2,447,010.80 usft	Longitude:	-108.134267
Position Uncertainty:	0.0 usft	Slot Radius:	13-3/16 "	Grid Convergence:	1.83 °

Well	BJU G35 FED 12A-35 496 - Slot BJU G35 FED 12A-35 496					
Well Position	+N/-S	5.2 usft	Northing:	14,415,358.60 usft	Latitude:	39.660650
	+E/-W	-17.3 usft	Easting:	2,446,993.30 usft	Longitude:	-108.134329
Position Uncertainty		0.0 usft	Wellhead Elevation:		Ground Level:	8,164.0 usft

Wellbore	Wellbore #1				
Magnetics	Model Name	Sample Date	Declination (°)	Dip Angle (°)	Field Strength (nT)
	HDGM_FILE	12/11/2019	9.48	65.83	51,250.20000000

Design	Design #1			
Audit Notes:				
Version:	Phase:	PLAN	Tie On Depth:	0.0
Vertical Section:	Depth From (TVD) (usft)	+N/-S (usft)	+E/-W (usft)	Direction (°)
	0.0	0.0	0.0	293.58

Plan Sections											
Measured Depth (usft)	Inclination (°)	Azimuth (°)	Vertical Depth (usft)	+N/-S (usft)	+E/-W (usft)	Dogleg Rate (°/100usft)	Build Rate (°/100usft)	Turn Rate (°/100usft)	TFO (°)	Target	
0.0	0.00	0.00	0.0	0.0	0.0	0.00	0.00	0.00	0.00		
225.0	0.00	0.00	225.0	0.0	0.0	0.00	0.00	0.00	0.00		
780.3	16.66	295.44	772.6	34.4	-72.4	3.00	3.00	0.00	295.44		
7,608.9	16.66	295.44	7,314.4	875.5	-1,840.3	0.00	0.00	0.00	0.00		
8,164.2	0.00	0.00	7,862.0	909.9	-1,912.7	3.00	-3.00	0.00	180.00	OHCR - BJ G35 12	
8,266.1	1.53	250.17	7,963.9	909.5	-1,913.9	1.50	1.50	-107.81	250.17		
11,961.6	1.53	250.17	11,658.0	876.0	-2,006.6	0.00	0.00	0.00	0.00	PBHL - BJ G35 12	

Database:	EDM 5000.1 Single User Db	Local Co-ordinate Reference:	Well BJU G35 FED 12A-35 496 - Slot BJU G35 FED 12A-35 496
Company:	Caerus Oil & Gas	TVD Reference:	RKB @ 8194.0usft (H&P#329)
Project:	Garfield County, CO	MD Reference:	RKB @ 8194.0usft (H&P#329)
Site:	NPM G35 496 Pad	North Reference:	True
Well:	BJU G35 FED 12A-35 496	Survey Calculation Method:	Minimum Curvature
Wellbore:	Wellbore #1		
Design:	Design #1		

Planned Survey

Measured Depth (usft)	Inclination (°)	Azimuth (°)	Vertical Depth (usft)	+N/-S (usft)	+E/-W (usft)	Vertical Section (usft)	Dogleg Rate (°/100usft)	Build Rate (°/100usft)	Turn Rate (°/100usft)
0.0	0.00	0.00	0.0	0.0	0.0	0.0	0.00	0.00	0.00
100.0	0.00	0.00	100.0	0.0	0.0	0.0	0.00	0.00	0.00
200.0	0.00	0.00	200.0	0.0	0.0	0.0	0.00	0.00	0.00
Build 3° / 100'									
225.0	0.00	0.00	225.0	0.0	0.0	0.0	0.00	0.00	0.00
300.0	2.25	295.44	300.0	0.6	-1.3	1.5	3.00	3.00	0.00
400.0	5.25	295.44	399.8	3.4	-7.2	8.0	3.00	3.00	0.00
500.0	8.25	295.44	499.1	8.5	-17.8	19.8	3.00	3.00	0.00
600.0	11.25	295.44	597.6	15.8	-33.1	36.7	3.00	3.00	0.00
700.0	14.25	295.44	695.1	25.2	-53.1	58.7	3.00	3.00	0.00
EOB @ 16.66° Inc. / 295.44° Azm									
780.3	16.66	295.44	772.6	34.4	-72.4	80.1	3.00	3.00	0.00
800.0	16.66	295.44	791.4	36.9	-77.5	85.8	0.00	0.00	0.00
900.0	16.66	295.44	887.2	49.2	-103.4	114.4	0.00	0.00	0.00
1,000.0	16.66	295.44	983.0	61.5	-129.3	143.1	0.00	0.00	0.00
1,100.0	16.66	295.44	1,078.8	73.8	-155.2	171.7	0.00	0.00	0.00
1,200.0	16.66	295.44	1,174.6	86.1	-181.0	200.4	0.00	0.00	0.00
1,300.0	16.66	295.44	1,270.4	98.4	-206.9	229.0	0.00	0.00	0.00
1,400.0	16.66	295.44	1,366.2	110.8	-232.8	257.7	0.00	0.00	0.00
1,500.0	16.66	295.44	1,462.0	123.1	-258.7	286.3	0.00	0.00	0.00
1,600.0	16.66	295.44	1,557.8	135.4	-284.6	315.0	0.00	0.00	0.00
1,700.0	16.66	295.44	1,653.6	147.7	-310.5	343.7	0.00	0.00	0.00
1,800.0	16.66	295.44	1,749.4	160.0	-336.4	372.3	0.00	0.00	0.00
1,900.0	16.66	295.44	1,845.2	172.3	-362.3	401.0	0.00	0.00	0.00
2,000.0	16.66	295.44	1,941.0	184.7	-388.2	429.6	0.00	0.00	0.00
2,100.0	16.66	295.44	2,036.8	197.0	-414.0	458.3	0.00	0.00	0.00
2,200.0	16.66	295.44	2,132.6	209.3	-439.9	486.9	0.00	0.00	0.00
2,300.0	16.66	295.44	2,228.4	221.6	-465.8	515.6	0.00	0.00	0.00
2,400.0	16.66	295.44	2,324.2	233.9	-491.7	544.2	0.00	0.00	0.00
2,500.0	16.66	295.44	2,420.0	246.2	-517.6	572.9	0.00	0.00	0.00
2,600.0	16.66	295.44	2,515.8	258.6	-543.5	601.5	0.00	0.00	0.00
Wasatch									
2,650.3	16.66	295.44	2,564.0	264.8	-556.5	616.0	0.00	0.00	0.00
2,700.0	16.66	295.44	2,611.6	270.9	-569.4	630.2	0.00	0.00	0.00
2,800.0	16.66	295.44	2,707.4	283.2	-595.3	658.9	0.00	0.00	0.00
2,900.0	16.66	295.44	2,803.2	295.5	-621.2	687.5	0.00	0.00	0.00
3,000.0	16.66	295.44	2,899.0	307.8	-647.1	716.2	0.00	0.00	0.00
3,100.0	16.66	295.44	2,994.8	320.1	-672.9	744.8	0.00	0.00	0.00
3,200.0	16.66	295.44	3,090.6	332.5	-698.8	773.5	0.00	0.00	0.00
3,300.0	16.66	295.44	3,186.4	344.8	-724.7	802.1	0.00	0.00	0.00
3,400.0	16.66	295.44	3,282.2	357.1	-750.6	830.8	0.00	0.00	0.00
3,500.0	16.66	295.44	3,378.0	369.4	-776.5	859.4	0.00	0.00	0.00
3,600.0	16.66	295.44	3,473.8	381.7	-802.4	888.1	0.00	0.00	0.00
3,700.0	16.66	295.44	3,569.6	394.0	-828.3	916.8	0.00	0.00	0.00
3,800.0	16.66	295.44	3,665.4	406.4	-854.2	945.4	0.00	0.00	0.00
3,900.0	16.66	295.44	3,761.2	418.7	-880.1	974.1	0.00	0.00	0.00
4,000.0	16.66	295.44	3,857.0	431.0	-905.9	1,002.7	0.00	0.00	0.00
4,100.0	16.66	295.44	3,952.9	443.3	-931.8	1,031.4	0.00	0.00	0.00
4,200.0	16.66	295.44	4,048.7	455.6	-957.7	1,060.0	0.00	0.00	0.00
4,300.0	16.66	295.44	4,144.5	467.9	-983.6	1,088.7	0.00	0.00	0.00
4,400.0	16.66	295.44	4,240.3	480.3	-1,009.5	1,117.3	0.00	0.00	0.00
4,500.0	16.66	295.44	4,336.1	492.6	-1,035.4	1,146.0	0.00	0.00	0.00
4,600.0	16.66	295.44	4,431.9	504.9	-1,061.3	1,174.6	0.00	0.00	0.00

Database:	EDM 5000.1 Single User Db	Local Co-ordinate Reference:	Well BJU G35 FED 12A-35 496 - Slot BJU G35 FED 12A-35 496
Company:	Caerus Oil & Gas	TVD Reference:	RKB @ 8194.0usft (H&P#329)
Project:	Garfield County, CO	MD Reference:	RKB @ 8194.0usft (H&P#329)
Site:	NPM G35 496 Pad	North Reference:	True
Well:	BJU G35 FED 12A-35 496	Survey Calculation Method:	Minimum Curvature
Wellbore:	Wellbore #1		
Design:	Design #1		

Planned Survey

Measured Depth (usft)	Inclination (°)	Azimuth (°)	Vertical Depth (usft)	+N/-S (usft)	+E/-W (usft)	Vertical Section (usft)	Dogleg Rate (°/100usft)	Build Rate (°/100usft)	Turn Rate (°/100usft)
4,700.0	16.66	295.44	4,527.7	517.2	-1,087.2	1,203.3	0.00	0.00	0.00
4,800.0	16.66	295.44	4,623.5	529.5	-1,113.1	1,232.0	0.00	0.00	0.00
4,900.0	16.66	295.44	4,719.3	541.8	-1,139.0	1,260.6	0.00	0.00	0.00
5,000.0	16.66	295.44	4,815.1	554.2	-1,164.8	1,289.3	0.00	0.00	0.00
5,100.0	16.66	295.44	4,910.9	566.5	-1,190.7	1,317.9	0.00	0.00	0.00
5,200.0	16.66	295.44	5,006.7	578.8	-1,216.6	1,346.6	0.00	0.00	0.00
5,300.0	16.66	295.44	5,102.5	591.1	-1,242.5	1,375.2	0.00	0.00	0.00
5,400.0	16.66	295.44	5,198.3	603.4	-1,268.4	1,403.9	0.00	0.00	0.00
5,500.0	16.66	295.44	5,294.1	615.7	-1,294.3	1,432.5	0.00	0.00	0.00
5,600.0	16.66	295.44	5,389.9	628.1	-1,320.2	1,461.2	0.00	0.00	0.00
5,700.0	16.66	295.44	5,485.7	640.4	-1,346.1	1,489.8	0.00	0.00	0.00
Wasatch G									
5,781.7	16.66	295.44	5,564.0	650.4	-1,367.2	1,513.3	0.00	0.00	0.00
5,800.0	16.66	295.44	5,581.5	652.7	-1,372.0	1,518.5	0.00	0.00	0.00
5,900.0	16.66	295.44	5,677.3	665.0	-1,397.8	1,547.2	0.00	0.00	0.00
6,000.0	16.66	295.44	5,773.1	677.3	-1,423.7	1,575.8	0.00	0.00	0.00
Fort Union									
6,063.6	16.66	295.44	5,834.0	685.2	-1,440.2	1,594.0	0.00	0.00	0.00
6,100.0	16.66	295.44	5,868.9	689.6	-1,449.6	1,604.5	0.00	0.00	0.00
6,200.0	16.66	295.44	5,964.7	702.0	-1,475.5	1,633.1	0.00	0.00	0.00
6,300.0	16.66	295.44	6,060.5	714.3	-1,501.4	1,661.8	0.00	0.00	0.00
6,400.0	16.66	295.44	6,156.3	726.6	-1,527.3	1,690.4	0.00	0.00	0.00
6,500.0	16.66	295.44	6,252.1	738.9	-1,553.2	1,719.1	0.00	0.00	0.00
6,600.0	16.66	295.44	6,347.9	751.2	-1,579.1	1,747.7	0.00	0.00	0.00
6,700.0	16.66	295.44	6,443.7	763.5	-1,605.0	1,776.4	0.00	0.00	0.00
6,800.0	16.66	295.44	6,539.5	775.9	-1,630.9	1,805.0	0.00	0.00	0.00
6,900.0	16.66	295.44	6,635.3	788.2	-1,656.7	1,833.7	0.00	0.00	0.00
7,000.0	16.66	295.44	6,731.1	800.5	-1,682.6	1,862.4	0.00	0.00	0.00
7,100.0	16.66	295.44	6,826.9	812.8	-1,708.5	1,891.0	0.00	0.00	0.00
7,200.0	16.66	295.44	6,922.7	825.1	-1,734.4	1,919.7	0.00	0.00	0.00
7,300.0	16.66	295.44	7,018.5	837.4	-1,760.3	1,948.3	0.00	0.00	0.00
7,400.0	16.66	295.44	7,114.3	849.8	-1,786.2	1,977.0	0.00	0.00	0.00
7,500.0	16.66	295.44	7,210.1	862.1	-1,812.1	2,005.6	0.00	0.00	0.00
Drop 3° /100'									
7,608.9	16.66	295.44	7,314.4	875.5	-1,840.3	2,036.8	0.00	0.00	0.00
7,700.0	13.93	295.44	7,402.3	885.8	-1,862.0	2,060.8	3.00	-3.00	0.00
7,800.0	10.93	295.44	7,500.0	895.0	-1,881.4	2,082.4	3.00	-3.00	0.00
7,900.0	7.93	295.44	7,598.6	902.1	-1,896.2	2,098.7	3.00	-3.00	0.00
8,000.0	4.93	295.44	7,698.0	906.9	-1,906.3	2,109.9	3.00	-3.00	0.00
8,100.0	1.93	295.44	7,797.8	909.5	-1,911.7	2,115.9	3.00	-3.00	0.00
EOD @ Vertical / Build 1.5° / 100' - Ohio Creek - TOG									
8,164.2	0.00	0.00	7,862.0	909.9	-1,912.7	2,117.0	3.00	-3.00	0.00
8,200.0	0.54	250.17	7,897.8	909.9	-1,912.8	2,117.1	1.50	1.50	0.00
EOB @ 1.53° Inc. / 250.17° Azm									
8,266.1	1.53	250.17	7,963.9	909.5	-1,913.9	2,118.0	1.50	1.50	0.00
8,300.0	1.53	250.17	7,997.7	909.2	-1,914.8	2,118.6	0.00	0.00	0.00
8,400.0	1.53	250.17	8,097.7	908.3	-1,917.3	2,120.5	0.00	0.00	0.00
Williams Fork									
8,411.3	1.53	250.17	8,109.0	908.1	-1,917.6	2,120.8	0.00	0.00	0.00
8,500.0	1.53	250.17	8,197.7	907.3	-1,919.8	2,122.5	0.00	0.00	0.00
8,600.0	1.53	250.17	8,297.6	906.4	-1,922.3	2,124.4	0.00	0.00	0.00
8,700.0	1.53	250.17	8,397.6	905.5	-1,924.8	2,126.4	0.00	0.00	0.00

Database:	EDM 5000.1 Single User Db	Local Co-ordinate Reference:	Well BJU G35 FED 12A-35 496 - Slot BJU G35 FED 12A-35 496
Company:	Caerus Oil & Gas	TVD Reference:	RKB @ 8194.0usft (H&P#329)
Project:	Garfield County, CO	MD Reference:	RKB @ 8194.0usft (H&P#329)
Site:	NPM G35 496 Pad	North Reference:	True
Well:	BJU G35 FED 12A-35 496	Survey Calculation Method:	Minimum Curvature
Wellbore:	Wellbore #1		
Design:	Design #1		

Planned Survey

Measured Depth (usft)	Inclination (°)	Azimuth (°)	Vertical Depth (usft)	+N/-S (usft)	+E/-W (usft)	Vertical Section (usft)	Dogleg Rate (°/100usft)	Build Rate (°/100usft)	Turn Rate (°/100usft)	
8,800.0	1.53	250.17	8,497.6	904.6	-1,927.3	2,128.3	0.00	0.00	0.00	
8,900.0	1.53	250.17	8,597.5	903.7	-1,929.8	2,130.2	0.00	0.00	0.00	
9,000.0	1.53	250.17	8,697.5	902.8	-1,932.4	2,132.2	0.00	0.00	0.00	
9,100.0	1.53	250.17	8,797.4	901.9	-1,934.9	2,134.1	0.00	0.00	0.00	
9,200.0	1.53	250.17	8,897.4	901.0	-1,937.4	2,136.0	0.00	0.00	0.00	
9,300.0	1.53	250.17	8,997.4	900.1	-1,939.9	2,138.0	0.00	0.00	0.00	
9,400.0	1.53	250.17	9,097.3	899.2	-1,942.4	2,139.9	0.00	0.00	0.00	
9,500.0	1.53	250.17	9,197.3	898.3	-1,944.9	2,141.9	0.00	0.00	0.00	
9,600.0	1.53	250.17	9,297.3	897.4	-1,947.4	2,143.8	0.00	0.00	0.00	
9,700.0	1.53	250.17	9,397.2	896.5	-1,949.9	2,145.7	0.00	0.00	0.00	
9,800.0	1.53	250.17	9,497.2	895.6	-1,952.4	2,147.7	0.00	0.00	0.00	
9,900.0	1.53	250.17	9,597.2	894.7	-1,954.9	2,149.6	0.00	0.00	0.00	
10,000.0	1.53	250.17	9,697.1	893.8	-1,957.4	2,151.5	0.00	0.00	0.00	
10,100.0	1.53	250.17	9,797.1	892.9	-1,959.9	2,153.5	0.00	0.00	0.00	
10,200.0	1.53	250.17	9,897.1	892.0	-1,962.5	2,155.4	0.00	0.00	0.00	
10,300.0	1.53	250.17	9,997.0	891.1	-1,965.0	2,157.3	0.00	0.00	0.00	
10,400.0	1.53	250.17	10,097.0	890.2	-1,967.5	2,159.3	0.00	0.00	0.00	
10,500.0	1.53	250.17	10,197.0	889.3	-1,970.0	2,161.2	0.00	0.00	0.00	
10,600.0	1.53	250.17	10,296.9	888.3	-1,972.5	2,163.2	0.00	0.00	0.00	
10,700.0	1.53	250.17	10,396.9	887.4	-1,975.0	2,165.1	0.00	0.00	0.00	
10,800.0	1.53	250.17	10,496.8	886.5	-1,977.5	2,167.0	0.00	0.00	0.00	
10,900.0	1.53	250.17	10,596.8	885.6	-1,980.0	2,169.0	0.00	0.00	0.00	
11,000.0	1.53	250.17	10,696.8	884.7	-1,982.5	2,170.9	0.00	0.00	0.00	
11,100.0	1.53	250.17	10,796.7	883.8	-1,985.0	2,172.8	0.00	0.00	0.00	
Cameo										
11,167.3	1.53	250.17	10,864.0	883.2	-1,986.7	2,174.1	0.00	0.00	0.00	
11,200.0	1.53	250.17	10,896.7	882.9	-1,987.5	2,174.8	0.00	0.00	0.00	
11,300.0	1.53	250.17	10,996.7	882.0	-1,990.1	2,176.7	0.00	0.00	0.00	
11,400.0	1.53	250.17	11,096.6	881.1	-1,992.6	2,178.7	0.00	0.00	0.00	
11,500.0	1.53	250.17	11,196.6	880.2	-1,995.1	2,180.6	0.00	0.00	0.00	
11,600.0	1.53	250.17	11,296.6	879.3	-1,997.6	2,182.5	0.00	0.00	0.00	
11,700.0	1.53	250.17	11,396.5	878.4	-2,000.1	2,184.5	0.00	0.00	0.00	
Rollins										
11,761.5	1.53	250.17	11,458.0	877.8	-2,001.6	2,185.7	0.00	0.00	0.00	
11,800.0	1.53	250.17	11,496.5	877.5	-2,002.6	2,186.4	0.00	0.00	0.00	
11,900.0	1.53	250.17	11,596.5	876.6	-2,005.1	2,188.3	0.00	0.00	0.00	
TD @ 11961.6' MD / 11658.0' TVD										
11,961.6	1.53	250.17	11,658.0	876.0	-2,006.6	2,189.5	0.00	0.00	0.00	

Design Targets

Target Name	Dip Angle (°)	Dip Dir. (°)	TVD (usft)	+N/-S (usft)	+E/-W (usft)	Northing (usft)	Easting (usft)	Latitude	Longitude
OHCR - BJ G35 12A- - plan hits target center - Point	0.00	0.00	7,862.0	909.9	-1,912.7	14,416,206.98	2,445,052.55	39.663147	-108.141120
PBHL - BJ G35 12A- - plan hits target center - Ellipse (radii L100.0 W50.0 on 250.00 azi)	0.00	0.00	11,658.0	876.0	-2,006.6	14,416,170.10	2,444,959.70	39.663054	-108.141454

Database:	EDM 5000.1 Single User Db	Local Co-ordinate Reference:	Well BJU G35 FED 12A-35 496 - Slot BJU G35 FED 12A-35 496
Company:	Caerus Oil & Gas	TVD Reference:	RKB @ 8194.0usft (H&P#329)
Project:	Garfield County, CO	MD Reference:	RKB @ 8194.0usft (H&P#329)
Site:	NPM G35 496 Pad	North Reference:	True
Well:	BJU G35 FED 12A-35 496	Survey Calculation Method:	Minimum Curvature
Wellbore:	Wellbore #1		
Design:	Design #1		

Formations						
Measured Depth (usft)	Vertical Depth (usft)	Name	Lithology	Dip (°)	Dip Direction (°)	
2,650.3	2,564.0	Wasatch				
5,781.7	5,564.0	Wasatch G				
6,063.6	5,834.0	Fort Union				
8,164.2	7,862.0	Ohio Creek				
8,164.2	7,862.0	TOG				
8,411.3	8,109.0	Williams Fork				
11,167.3	10,864.0	Cameo				
11,761.5	11,458.0	Rollins				

Plan Annotations					
Measured Depth (usft)	Vertical Depth (usft)	Local Coordinates		Comment	
		+N/-S (usft)	+E/-W (usft)		
225.0	225.0	0.0	0.0	Build 3° / 100'	
780.3	772.6	34.4	-72.4	EOB @ 16.66° Inc. / 295.44° Azm	
7,608.9	7,314.4	875.5	-1,840.3	Drop 3° / 100'	
8,164.2	7,862.0	909.9	-1,912.7	EOD @ Vertical / Build 1.5° / 100'	
8,266.1	7,963.9	909.5	-1,913.9	EOB @ 1.53° Inc. / 250.17° Azm	
11,961.6	11,658.0	876.0	-2,006.6	TD @ 11961.6' MD / 11658.0' TVD	