

Project: Garfield County, CO  
 Site: NPM G35 496 Pad  
 Well: BJU G35 FED 11C-35 496  
 Wellbore: Wellbore #1  
 Design: Design #1  
 Latitude: 39.660651  
 Longitude: -108.134284  
 Ground Level: 8164.0  
 RKB @ 8194.0usft (H&P#329)

FORMATION TOP DETAILS		
TVDPath	MDPath	Formation
2582.0	2688.9	Wasatch
5582.0	5863.9	Wasatch G
5850.0	6147.6	Fort Union
7889.0	8280.8	Ohio Creek
7889.0	8280.8	TOG
8132.0	8523.9	Williams Fork
10886.0	11278.8	Cameo
11488.0	11881.0	Rollins

#### REFERENCE INFORMATION

Co-ordinate (N/E) Reference: Well BJU G35 FED 11C-35 496 - Slot BJU G35 FED 11C-35 496, True North  
 Vertical (TVD) Reference: RKB @ 8194.0usft (H&P#329)  
 Section (VS) Reference: Slot - BJU G35 FED 11C-35 496(0.0N, 0.0E)  
 Measured Depth Reference: RKB @ 8194.0usft (H&P#329)  
 Calculation Method: Minimum Curvature

#### WELL DETAILS: BJU G35 FED 11C-35 496

8164.0  
 +N/-S 0.0 +E/-W 0.0 Northing 14415359.60 Easting 2447005.80 Latitude 39.660651 Longitude -108.134284

#### PROJECT DETAILS: Garfield County, CO

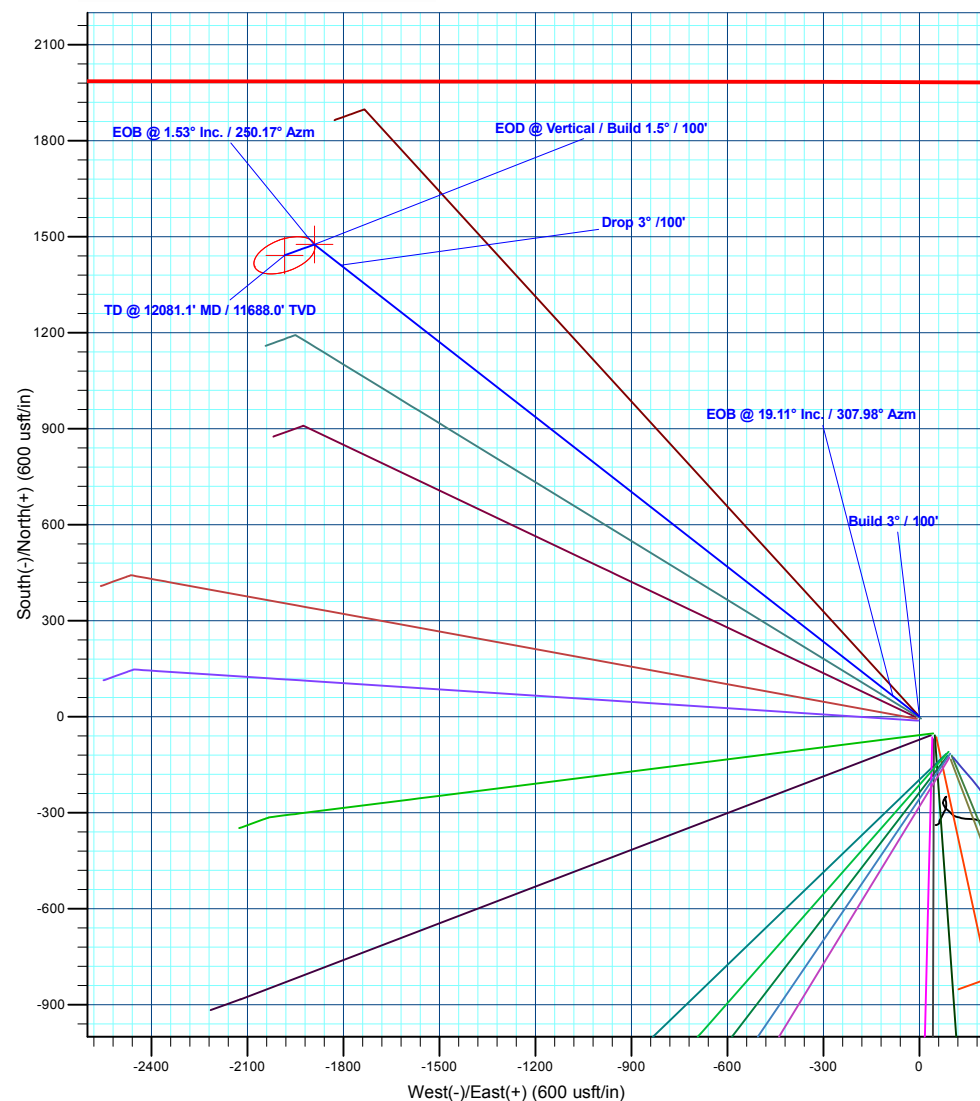
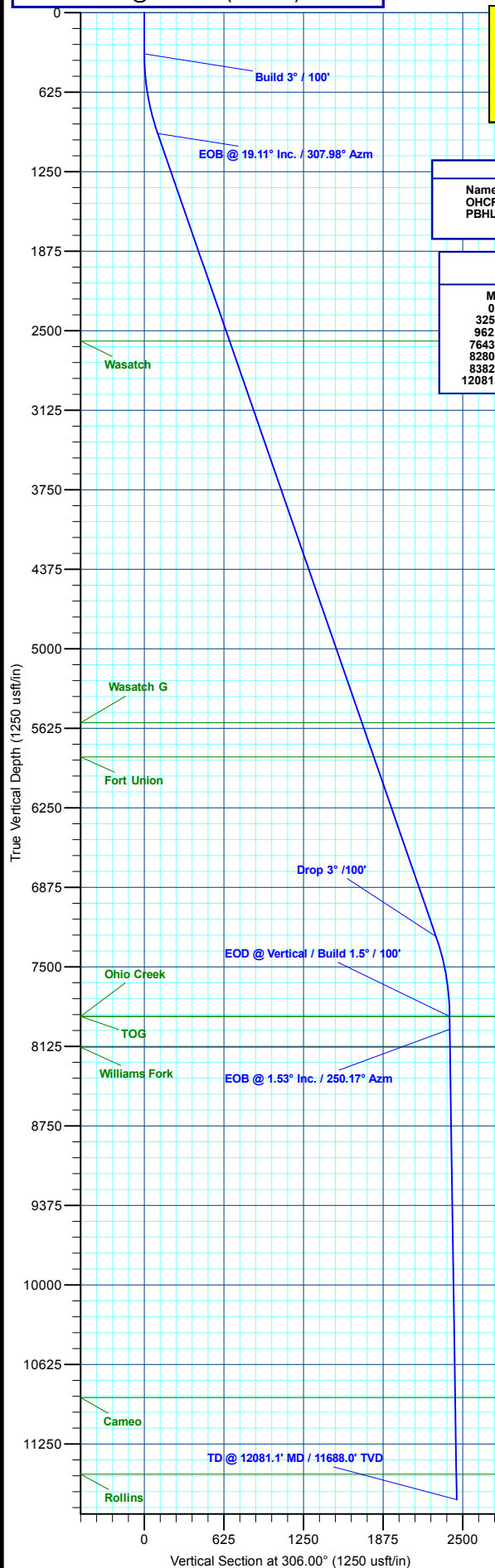
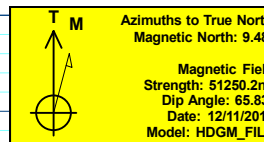
Geodetic System: Universal Transverse Mercator (US Survey Feet)  
 Datum: NAD 1927 - Western US  
 Ellipsoid: Clarke 1866  
 Zone: Zone 12N (114 W to 108 W)  
 System Datum: Mean Sea Level

#### DESIGN TARGET DETAILS

Name	TVD	+N/-S	+E/-W	Northing	Easting	Latitude	Longitude
OHCR - BJ G35 11C-35 496	7889.0	1475.8	-1890.4	14416774.28	2445069.25	39.664701	-108.140996
PBHL - BJ G35 11C-35 496	11688.0	1441.9	-1984.4	14416737.40	2444976.40	39.664608	-108.141330

#### SECTION DETAILS

MD	Inc	Azi	TVD	+N/-S	+E/-W	Dleg	TFace	VSect	Annotation
0.0	0.00	0.00	0.0	0.0	0.0	0.00	0.00	0.0	
325.0	0.00	0.00	325.0	0.0	0.0	0.00	0.00	0.0	Build 3° / 100'
962.1	19.11	307.98	950.3	64.8	-83.0	3.00	307.98	105.2	EOB @ 19.11° Inc. / 307.98° Azm
7643.7	19.11	307.98	7263.7	1411.0	-1807.4	0.00	0.00	2291.6	EOB @ 3° / 100'
8280.8	0.00	0.00	7889.0	1475.8	-1890.4	3.00	180.00	2396.8	EOD @ Vertical / Build 1.5° / 100'
8382.6	1.53	250.17	7990.8	1475.3	-1891.7	1.50	250.17	2397.6	EOB @ 1.53° Inc. / 250.17° Azm
12081.1	1.53	250.17	11688.0	1441.9	-1984.4	0.00	0.00	2452.9	TD @ 12081.1' MD / 11688.0' TVD



Plan: Design #1 (BJU G35 FED 11C-35 496/Wellbore #1)

Created By: Will Jircik

Date: 14:59, December 18 2019



## **Caerus Oil & Gas**

**Garfield County, CO**

**NPM G35 496 Pad**

**BJU G35 FED 11C-35 496 - Slot BJU G35 FED 11C-35 496**

**Wellbore #1**

**Plan: Design #1**

## **QES Well Planning Report**

**18 December, 2019**



<b>Database:</b>	EDM 5000.1 Single User Db	<b>Local Co-ordinate Reference:</b>	Well BJU G35 FED 11C-35 496 - Slot BJU G35 FED 11C-35 496
<b>Company:</b>	Caerus Oil & Gas	<b>TVD Reference:</b>	RKB @ 8194.0usft (H&P#329)
<b>Project:</b>	Garfield County, CO	<b>MD Reference:</b>	RKB @ 8194.0usft (H&P#329)
<b>Site:</b>	NPM G35 496 Pad	<b>North Reference:</b>	True
<b>Well:</b>	BJU G35 FED 11C-35 496	<b>Survey Calculation Method:</b>	Minimum Curvature
<b>Wellbore:</b>	Wellbore #1		
<b>Design:</b>	Design #1		

<b>Project</b>	Garfield County, CO		
<b>Map System:</b>	Universal Transverse Mercator (US Survey Fee	<b>System Datum:</b>	Mean Sea Level
<b>Geo Datum:</b>	NAD 1927 - Western US		
<b>Map Zone:</b>	Zone 12N (114 W to 108 W)		

<b>Site</b>	NPM G35 496 Pad		
<b>Site Position:</b>		<b>Northing:</b>	14,415,354.00 usft
<b>From:</b>	Map	<b>Easting:</b>	2,447,010.80 usft
<b>Position Uncertainty:</b>	0.0 usft	<b>Slot Radius:</b>	13-3/16 "
		<b>Latitude:</b>	39.660635
		<b>Longitude:</b>	-108.134267
		<b>Grid Convergence:</b>	1.83 °

<b>Well</b>	BJU G35 FED 11C-35 496 - Slot BJU G35 FED 11C-35 496		
<b>Well Position</b>	<b>+N/-S</b>	5.8 usft	<b>Northing:</b> 14,415,359.60 usft
	<b>+E/-W</b>	-4.8 usft	<b>Easting:</b> 2,447,005.80 usft
<b>Position Uncertainty</b>	0.0 usft	<b>Wellhead Elevation:</b>	<b>Latitude:</b> 39.660651
			<b>Longitude:</b> -108.134284
			<b>Ground Level:</b> 8,164.0 usft

<b>Wellbore</b>	Wellbore #1				
<b>Magnetics</b>	<b>Model Name</b>	<b>Sample Date</b>	<b>Declination (°)</b>	<b>Dip Angle (°)</b>	<b>Field Strength (nT)</b>
	HDGM_FILE	12/11/2019	9.48	65.83	51,250.20000000

<b>Design</b>	Design #1			
<b>Audit Notes:</b>				
<b>Version:</b>	<b>Phase:</b>	PLAN	<b>Tie On Depth:</b>	0.0
<b>Vertical Section:</b>	<b>Depth From (TVD) (usft)</b>	<b>+N/-S (usft)</b>	<b>+E/-W (usft)</b>	<b>Direction (°)</b>
	0.0	0.0	0.0	306.00

<b>Plan Sections</b>										
<b>Measured Depth (usft)</b>	<b>Inclination (°)</b>	<b>Azimuth (°)</b>	<b>Vertical Depth (usft)</b>	<b>+N/-S (usft)</b>	<b>+E/-W (usft)</b>	<b>Dogleg Rate (°/100usft)</b>	<b>Build Rate (°/100usft)</b>	<b>Turn Rate (°/100usft)</b>	<b>TFO (°)</b>	<b>Target</b>
0.0	0.00	0.00	0.0	0.0	0.0	0.00	0.00	0.00	0.00	
325.0	0.00	0.00	325.0	0.0	0.0	0.00	0.00	0.00	0.00	
962.1	19.11	307.98	950.3	64.8	-83.0	3.00	3.00	0.00	307.98	
7,643.7	19.11	307.98	7,263.7	1,411.0	-1,807.4	0.00	0.00	0.00	0.00	
8,280.8	0.00	0.00	7,889.0	1,475.8	-1,890.4	3.00	-3.00	0.00	180.00	OHCR - BJ G35 11
8,382.6	1.53	250.17	7,990.8	1,475.3	-1,891.7	1.50	1.50	-107.90	250.17	
12,081.1	1.53	250.17	11,688.0	1,441.9	-1,984.4	0.00	0.00	0.00	0.00	PBHL - BJ G35 11C

<b>Database:</b>	EDM 5000.1 Single User Db	<b>Local Co-ordinate Reference:</b>	Well BJU G35 FED 11C-35 496 - Slot BJU G35 FED 11C-35 496
<b>Company:</b>	Caerus Oil & Gas	<b>TVD Reference:</b>	RKB @ 8194.0usft (H&P#329)
<b>Project:</b>	Garfield County, CO	<b>MD Reference:</b>	RKB @ 8194.0usft (H&P#329)
<b>Site:</b>	NPM G35 496 Pad	<b>North Reference:</b>	True
<b>Well:</b>	BJU G35 FED 11C-35 496	<b>Survey Calculation Method:</b>	Minimum Curvature
<b>Wellbore:</b>	Wellbore #1		
<b>Design:</b>	Design #1		

Planned Survey									
Measured Depth (usft)	Inclination (°)	Azimuth (°)	Vertical Depth (usft)	+N/-S (usft)	+E/-W (usft)	Vertical Section (usft)	Dogleg Rate (°/100usft)	Build Rate (°/100usft)	Turn Rate (°/100usft)
0.0	0.00	0.00	0.0	0.0	0.0	0.0	0.00	0.00	0.00
100.0	0.00	0.00	100.0	0.0	0.0	0.0	0.00	0.00	0.00
200.0	0.00	0.00	200.0	0.0	0.0	0.0	0.00	0.00	0.00
300.0	0.00	0.00	300.0	0.0	0.0	0.0	0.00	0.00	0.00
<b>Build 3° / 100'</b>									
325.0	0.00	0.00	325.0	0.0	0.0	0.0	0.00	0.00	0.00
400.0	2.25	307.98	400.0	0.9	-1.2	1.5	3.00	3.00	0.00
500.0	5.25	307.98	499.8	4.9	-6.3	8.0	3.00	3.00	0.00
600.0	8.25	307.98	599.1	12.2	-15.6	19.8	3.00	3.00	0.00
700.0	11.25	307.98	697.6	22.6	-28.9	36.7	3.00	3.00	0.00
800.0	14.25	307.98	795.1	36.2	-46.3	58.7	3.00	3.00	0.00
900.0	17.25	307.98	891.4	52.9	-67.7	85.9	3.00	3.00	0.00
<b>EOB @ 19.11° Inc. / 307.98° Azm</b>									
962.1	19.11	307.98	950.3	64.8	-83.0	105.2	3.00	3.00	0.00
1,000.0	19.11	307.98	986.2	72.4	-92.8	117.6	0.00	0.00	0.00
1,100.0	19.11	307.98	1,080.6	92.6	-118.6	150.3	0.00	0.00	0.00
1,200.0	19.11	307.98	1,175.1	112.7	-144.4	183.1	0.00	0.00	0.00
1,300.0	19.11	307.98	1,269.6	132.9	-170.2	215.8	0.00	0.00	0.00
1,400.0	19.11	307.98	1,364.1	153.0	-196.0	248.5	0.00	0.00	0.00
1,500.0	19.11	307.98	1,458.6	173.2	-221.8	281.2	0.00	0.00	0.00
1,600.0	19.11	307.98	1,553.1	193.3	-247.6	314.0	0.00	0.00	0.00
1,700.0	19.11	307.98	1,647.6	213.5	-273.4	346.7	0.00	0.00	0.00
1,800.0	19.11	307.98	1,742.1	233.6	-299.2	379.4	0.00	0.00	0.00
1,900.0	19.11	307.98	1,836.6	253.8	-325.0	412.1	0.00	0.00	0.00
2,000.0	19.11	307.98	1,931.0	273.9	-350.9	444.8	0.00	0.00	0.00
2,100.0	19.11	307.98	2,025.5	294.1	-376.7	477.6	0.00	0.00	0.00
2,200.0	19.11	307.98	2,120.0	314.2	-402.5	510.3	0.00	0.00	0.00
2,300.0	19.11	307.98	2,214.5	334.4	-428.3	543.0	0.00	0.00	0.00
2,400.0	19.11	307.98	2,309.0	354.5	-454.1	575.7	0.00	0.00	0.00
2,500.0	19.11	307.98	2,403.5	374.6	-479.9	608.5	0.00	0.00	0.00
2,600.0	19.11	307.98	2,498.0	394.8	-505.7	641.2	0.00	0.00	0.00
<b>Wasatch</b>									
2,688.9	19.11	307.98	2,582.0	412.7	-528.7	670.3	0.00	0.00	0.00
2,700.0	19.11	307.98	2,592.5	414.9	-531.5	673.9	0.00	0.00	0.00
2,800.0	19.11	307.98	2,686.9	435.1	-557.3	706.6	0.00	0.00	0.00
2,900.0	19.11	307.98	2,781.4	455.2	-583.1	739.3	0.00	0.00	0.00
3,000.0	19.11	307.98	2,875.9	475.4	-608.9	772.1	0.00	0.00	0.00
3,100.0	19.11	307.98	2,970.4	495.5	-634.7	804.8	0.00	0.00	0.00
3,200.0	19.11	307.98	3,064.9	515.7	-660.6	837.5	0.00	0.00	0.00
3,300.0	19.11	307.98	3,159.4	535.8	-686.4	870.2	0.00	0.00	0.00
3,400.0	19.11	307.98	3,253.9	556.0	-712.2	903.0	0.00	0.00	0.00
3,500.0	19.11	307.98	3,348.4	576.1	-738.0	935.7	0.00	0.00	0.00
3,600.0	19.11	307.98	3,442.8	596.3	-763.8	968.4	0.00	0.00	0.00
3,700.0	19.11	307.98	3,537.3	616.4	-789.6	1,001.1	0.00	0.00	0.00
3,800.0	19.11	307.98	3,631.8	636.6	-815.4	1,033.8	0.00	0.00	0.00
3,900.0	19.11	307.98	3,726.3	656.7	-841.2	1,066.6	0.00	0.00	0.00
4,000.0	19.11	307.98	3,820.8	676.9	-867.0	1,099.3	0.00	0.00	0.00
4,100.0	19.11	307.98	3,915.3	697.0	-892.8	1,132.0	0.00	0.00	0.00
4,200.0	19.11	307.98	4,009.8	717.2	-918.6	1,164.7	0.00	0.00	0.00
4,300.0	19.11	307.98	4,104.3	737.3	-944.4	1,197.5	0.00	0.00	0.00
4,400.0	19.11	307.98	4,198.8	757.5	-970.3	1,230.2	0.00	0.00	0.00
4,500.0	19.11	307.98	4,293.2	777.6	-996.1	1,262.9	0.00	0.00	0.00
4,600.0	19.11	307.98	4,387.7	797.8	-1,021.9	1,295.6	0.00	0.00	0.00

<b>Database:</b>	EDM 5000.1 Single User Db	<b>Local Co-ordinate Reference:</b>	Well BJU G35 FED 11C-35 496 - Slot BJU G35 FED 11C-35 496
<b>Company:</b>	Caerus Oil & Gas	<b>TVD Reference:</b>	RKB @ 8194.0usft (H&P#329)
<b>Project:</b>	Garfield County, CO	<b>MD Reference:</b>	RKB @ 8194.0usft (H&P#329)
<b>Site:</b>	NPM G35 496 Pad	<b>North Reference:</b>	True
<b>Well:</b>	BJU G35 FED 11C-35 496	<b>Survey Calculation Method:</b>	Minimum Curvature
<b>Wellbore:</b>	Wellbore #1		
<b>Design:</b>	Design #1		

## Planned Survey

Measured Depth (usft)	Inclination (°)	Azimuth (°)	Vertical Depth (usft)	+N/-S (usft)	+E/-W (usft)	Vertical Section (usft)	Dogleg Rate (°/100usft)	Build Rate (°/100usft)	Turn Rate (°/100usft)
4,700.0	19.11	307.98	4,482.2	817.9	-1,047.7	1,328.3	0.00	0.00	0.00
4,800.0	19.11	307.98	4,576.7	838.1	-1,073.5	1,361.1	0.00	0.00	0.00
4,900.0	19.11	307.98	4,671.2	858.2	-1,099.3	1,393.8	0.00	0.00	0.00
5,000.0	19.11	307.98	4,765.7	878.4	-1,125.1	1,426.5	0.00	0.00	0.00
5,100.0	19.11	307.98	4,860.2	898.5	-1,150.9	1,459.2	0.00	0.00	0.00
5,200.0	19.11	307.98	4,954.7	918.7	-1,176.7	1,492.0	0.00	0.00	0.00
5,300.0	19.11	307.98	5,049.1	938.8	-1,202.5	1,524.7	0.00	0.00	0.00
5,400.0	19.11	307.98	5,143.6	958.9	-1,228.3	1,557.4	0.00	0.00	0.00
5,500.0	19.11	307.98	5,238.1	979.1	-1,254.1	1,590.1	0.00	0.00	0.00
5,600.0	19.11	307.98	5,332.6	999.2	-1,280.0	1,622.8	0.00	0.00	0.00
5,700.0	19.11	307.98	5,427.1	1,019.4	-1,305.8	1,655.6	0.00	0.00	0.00
5,800.0	19.11	307.98	5,521.6	1,039.5	-1,331.6	1,688.3	0.00	0.00	0.00
<b>Wasatch G</b>									
5,863.9	19.11	307.98	5,582.0	1,052.4	-1,348.1	1,709.2	0.00	0.00	0.00
5,900.0	19.11	307.98	5,616.1	1,059.7	-1,357.4	1,721.0	0.00	0.00	0.00
6,000.0	19.11	307.98	5,710.6	1,079.8	-1,383.2	1,753.7	0.00	0.00	0.00
6,100.0	19.11	307.98	5,805.0	1,100.0	-1,409.0	1,786.5	0.00	0.00	0.00
<b>Fort Union</b>									
6,147.6	19.11	307.98	5,850.0	1,109.6	-1,421.3	1,802.0	0.00	0.00	0.00
6,200.0	19.11	307.98	5,899.5	1,120.1	-1,434.8	1,819.2	0.00	0.00	0.00
6,300.0	19.11	307.98	5,994.0	1,140.3	-1,460.6	1,851.9	0.00	0.00	0.00
6,400.0	19.11	307.98	6,088.5	1,160.4	-1,486.4	1,884.6	0.00	0.00	0.00
6,500.0	19.11	307.98	6,183.0	1,180.6	-1,512.2	1,917.4	0.00	0.00	0.00
6,600.0	19.11	307.98	6,277.5	1,200.7	-1,538.0	1,950.1	0.00	0.00	0.00
6,700.0	19.11	307.98	6,372.0	1,220.9	-1,563.8	1,982.8	0.00	0.00	0.00
6,800.0	19.11	307.98	6,466.5	1,241.0	-1,589.7	2,015.5	0.00	0.00	0.00
6,900.0	19.11	307.98	6,560.9	1,261.2	-1,615.5	2,048.2	0.00	0.00	0.00
7,000.0	19.11	307.98	6,655.4	1,281.3	-1,641.3	2,081.0	0.00	0.00	0.00
7,100.0	19.11	307.98	6,749.9	1,301.5	-1,667.1	2,113.7	0.00	0.00	0.00
7,200.0	19.11	307.98	6,844.4	1,321.6	-1,692.9	2,146.4	0.00	0.00	0.00
7,300.0	19.11	307.98	6,938.9	1,341.8	-1,718.7	2,179.1	0.00	0.00	0.00
7,400.0	19.11	307.98	7,033.4	1,361.9	-1,744.5	2,211.9	0.00	0.00	0.00
7,500.0	19.11	307.98	7,127.9	1,382.1	-1,770.3	2,244.6	0.00	0.00	0.00
7,600.0	19.11	307.98	7,222.4	1,402.2	-1,796.1	2,277.3	0.00	0.00	0.00
<b>Drop 3° /100'</b>									
7,643.7	19.11	307.98	7,263.7	1,411.0	-1,807.4	2,291.6	0.00	0.00	0.00
7,700.0	17.42	307.98	7,317.1	1,421.9	-1,821.3	2,309.2	3.00	-3.00	0.00
7,800.0	14.42	307.98	7,413.3	1,438.8	-1,842.9	2,336.6	3.00	-3.00	0.00
7,900.0	11.42	307.98	7,510.7	1,452.5	-1,860.6	2,359.0	3.00	-3.00	0.00
8,000.0	8.42	307.98	7,609.2	1,463.1	-1,874.1	2,376.2	3.00	-3.00	0.00
8,100.0	5.42	307.98	7,708.5	1,470.5	-1,883.6	2,388.3	3.00	-3.00	0.00
8,200.0	2.42	307.98	7,808.2	1,474.8	-1,889.0	2,395.1	3.00	-3.00	0.00
<b>EOD @ Vertical / Build 1.5° / 100' - Ohio Creek - TOG</b>									
8,280.8	0.00	0.00	7,889.0	1,475.8	-1,890.4	2,396.8	3.00	-3.00	0.00
8,300.0	0.29	250.17	7,908.2	1,475.8	-1,890.4	2,396.8	1.50	1.50	0.00
<b>EOB @ 1.53° Inc. / 250.17° Azm</b>									
8,382.6	1.53	250.17	7,990.8	1,475.3	-1,891.7	2,397.6	1.50	1.50	0.00
8,400.0	1.53	250.17	8,008.2	1,475.2	-1,892.1	2,397.8	0.00	0.00	0.00
8,500.0	1.53	250.17	8,108.2	1,474.3	-1,894.6	2,399.3	0.00	0.00	0.00
<b>Williams Fork</b>									
8,523.9	1.53	250.17	8,132.0	1,474.1	-1,895.2	2,399.7	0.00	0.00	0.00
8,600.0	1.53	250.17	8,208.1	1,473.4	-1,897.1	2,400.8	0.00	0.00	0.00

<b>Database:</b>	EDM 5000.1 Single User Db	<b>Local Co-ordinate Reference:</b>	Well BJU G35 FED 11C-35 496 - Slot BJU G35 FED 11C-35 496
<b>Company:</b>	Caerus Oil & Gas	<b>TVD Reference:</b>	RKB @ 8194.0usft (H&P#329)
<b>Project:</b>	Garfield County, CO	<b>MD Reference:</b>	RKB @ 8194.0usft (H&P#329)
<b>Site:</b>	NPM G35 496 Pad	<b>North Reference:</b>	True
<b>Well:</b>	BJU G35 FED 11C-35 496	<b>Survey Calculation Method:</b>	Minimum Curvature
<b>Wellbore:</b>	Wellbore #1		
<b>Design:</b>	Design #1		

Planned Survey									
Measured Depth (usft)	Inclination (°)	Azimuth (°)	Vertical Depth (usft)	+N/-S (usft)	+E/-W (usft)	Vertical Section (usft)	Dogleg Rate (°/100usft)	Build Rate (°/100usft)	Turn Rate (°/100usft)
8,700.0	1.53	250.17	8,308.1	1,472.5	-1,899.6	2,402.3	0.00	0.00	0.00
8,800.0	1.53	250.17	8,408.0	1,471.6	-1,902.1	2,403.8	0.00	0.00	0.00
8,900.0	1.53	250.17	8,508.0	1,470.7	-1,904.6	2,405.3	0.00	0.00	0.00
9,000.0	1.53	250.17	8,608.0	1,469.8	-1,907.1	2,406.8	0.00	0.00	0.00
9,100.0	1.53	250.17	8,707.9	1,468.9	-1,909.6	2,408.3	0.00	0.00	0.00
9,200.0	1.53	250.17	8,807.9	1,468.0	-1,912.1	2,409.8	0.00	0.00	0.00
9,300.0	1.53	250.17	8,907.9	1,467.0	-1,914.7	2,411.3	0.00	0.00	0.00
9,400.0	1.53	250.17	9,007.8	1,466.1	-1,917.2	2,412.8	0.00	0.00	0.00
9,500.0	1.53	250.17	9,107.8	1,465.2	-1,919.7	2,414.3	0.00	0.00	0.00
9,600.0	1.53	250.17	9,207.8	1,464.3	-1,922.2	2,415.8	0.00	0.00	0.00
9,700.0	1.53	250.17	9,307.7	1,463.4	-1,924.7	2,417.3	0.00	0.00	0.00
9,800.0	1.53	250.17	9,407.7	1,462.5	-1,927.2	2,418.8	0.00	0.00	0.00
9,900.0	1.53	250.17	9,507.7	1,461.6	-1,929.7	2,420.3	0.00	0.00	0.00
10,000.0	1.53	250.17	9,607.6	1,460.7	-1,932.2	2,421.8	0.00	0.00	0.00
10,100.0	1.53	250.17	9,707.6	1,459.8	-1,934.7	2,423.3	0.00	0.00	0.00
10,200.0	1.53	250.17	9,807.5	1,458.9	-1,937.2	2,424.8	0.00	0.00	0.00
10,300.0	1.53	250.17	9,907.5	1,458.0	-1,939.7	2,426.3	0.00	0.00	0.00
10,400.0	1.53	250.17	10,007.5	1,457.1	-1,942.2	2,427.8	0.00	0.00	0.00
10,500.0	1.53	250.17	10,107.4	1,456.2	-1,944.7	2,429.3	0.00	0.00	0.00
10,600.0	1.53	250.17	10,207.4	1,455.3	-1,947.2	2,430.8	0.00	0.00	0.00
10,700.0	1.53	250.17	10,307.4	1,454.4	-1,949.7	2,432.3	0.00	0.00	0.00
10,800.0	1.53	250.17	10,407.3	1,453.5	-1,952.3	2,433.7	0.00	0.00	0.00
10,900.0	1.53	250.17	10,507.3	1,452.6	-1,954.8	2,435.2	0.00	0.00	0.00
11,000.0	1.53	250.17	10,607.3	1,451.7	-1,957.3	2,436.7	0.00	0.00	0.00
11,100.0	1.53	250.17	10,707.2	1,450.8	-1,959.8	2,438.2	0.00	0.00	0.00
11,200.0	1.53	250.17	10,807.2	1,449.9	-1,962.3	2,439.7	0.00	0.00	0.00
<b>Cameo</b>									
11,278.8	1.53	250.17	10,886.0	1,449.2	-1,964.3	2,440.9	0.00	0.00	0.00
11,300.0	1.53	250.17	10,907.2	1,449.0	-1,964.8	2,441.2	0.00	0.00	0.00
11,400.0	1.53	250.17	11,007.1	1,448.1	-1,967.3	2,442.7	0.00	0.00	0.00
11,500.0	1.53	250.17	11,107.1	1,447.2	-1,969.8	2,444.2	0.00	0.00	0.00
11,600.0	1.53	250.17	11,207.1	1,446.3	-1,972.3	2,445.7	0.00	0.00	0.00
11,700.0	1.53	250.17	11,307.0	1,445.4	-1,974.8	2,447.2	0.00	0.00	0.00
11,800.0	1.53	250.17	11,407.0	1,444.4	-1,977.3	2,448.7	0.00	0.00	0.00
<b>Rollins</b>									
11,881.0	1.53	250.17	11,488.0	1,443.7	-1,979.4	2,449.9	0.00	0.00	0.00
11,900.0	1.53	250.17	11,506.9	1,443.5	-1,979.8	2,450.2	0.00	0.00	0.00
12,000.0	1.53	250.17	11,606.9	1,442.6	-1,982.3	2,451.7	0.00	0.00	0.00
<b>TD @ 12081.1' MD / 11688.0' TVD</b>									
12,081.1	1.53	250.17	11,688.0	1,441.9	-1,984.4	2,452.9	0.00	0.00	0.00

<b>Database:</b>	EDM 5000.1 Single User Db	<b>Local Co-ordinate Reference:</b>	Well BJU G35 FED 11C-35 496 - Slot BJU G35 FED 11C-35 496
<b>Company:</b>	Caerus Oil & Gas	<b>TVD Reference:</b>	RKB @ 8194.0usft (H&P#329)
<b>Project:</b>	Garfield County, CO	<b>MD Reference:</b>	RKB @ 8194.0usft (H&P#329)
<b>Site:</b>	NPM G35 496 Pad	<b>North Reference:</b>	True
<b>Well:</b>	BJU G35 FED 11C-35 496	<b>Survey Calculation Method:</b>	Minimum Curvature
<b>Wellbore:</b>	Wellbore #1		
<b>Design:</b>	Design #1		

#### Design Targets

##### Target Name

- hit/miss target - Shape	Dip Angle (°)	Dip Dir. (°)	TVD (usft)	+N/-S (usft)	+E/-W (usft)	Northing (usft)	Easting (usft)	Latitude	Longitude
OHCR - BJ G35 11C- - plan hits target center - Point	0.00	0.00	7,889.0	1,475.8	-1,890.4	14,416,774.28	2,445,069.25	39.664701	-108.140996
PBHL - BJ G35 11C- - plan hits target center - Ellipse (radii L100.0 W50.0 on 250.00 azi)	0.00	0.00	11,688.0	1,441.9	-1,984.4	14,416,737.40	2,444,976.40	39.664608	-108.141330

#### Formations

Measured Depth (usft)	Vertical Depth (usft)	Name	Lithology	Dip (°)	Dip Direction (°)
2,688.9	2,582.0	Wasatch			
5,863.9	5,582.0	Wasatch G			
6,147.6	5,850.0	Fort Union			
8,280.8	7,889.0	Ohio Creek			
8,280.8	7,889.0	TOG			
8,523.9	8,132.0	Williams Fork			
11,278.8	10,886.0	Cameo			
11,881.0	11,488.0	Rollins			

#### Plan Annotations

Measured Depth (usft)	Vertical Depth (usft)	Local Coordinates		Comment
		+N/-S (usft)	+E/-W (usft)	
325.0	325.0	0.0	0.0	Build 3° / 100'
962.1	950.3	64.8	-83.0	EOB @ 19.11° Inc. / 307.98° Azm
7,643.7	7,263.7	1,411.0	-1,807.4	Drop 3° / 100'
8,280.8	7,889.0	1,475.8	-1,890.4	EOD @ Vertical / Build 1.5° / 100'
8,382.6	7,990.8	1,475.3	-1,891.7	EOB @ 1.53° Inc. / 250.17° Azm
12,081.1	11,688.0	1,441.9	-1,984.4	TD @ 12081.1' MD / 11688.0' TVD