

NW. COR.
SEC. 19, T5N, R67W
FOUND 3 1/4" ALUM. CAP
P.L.S. NO. 23520

N 89°31'00" W
2751.58' (M)

N. 1/4 COR.
SEC. 24, T5N, R68W
FOUND 3 1/4"
ALUM. CAP
P.L.S. NO. 10855

NE. 1/16 COR.
SEC. 24, T5N, R68W
FOUND 2 1/2"
ALUM. CAP
P.L.S. NO. 20676

T5N, R68W
24

N 89°45'32" W
1370.65' (M)

CE. 1/16 COR.
SEC. 24, T5N, R68W
FOUND 2 1/2"
ALUM. CAP
L.S. NO. 12374

E. 1/16 COR.
SEC. 24 & SEC. 25
T5N, R68W
FOUND 2 1/2" ALUM. CAP
L.S. NO. 12374

N 89°45'45" W
1362.55' (M)

S 89°57'56" W 2485.57' (M)

N. 1/4 COR.
SEC. 19, T5N, R67W
FOUND 3 1/4"
ALUM. CAP
L.S. NO. 22098

S 89°58'04" W 2642.00' (M)

N 89°59'35" E 9886' GRID
S 89°38'44" E TRUE
N 82°11'35" E MAGNETIC

NE. COR.
SEC. 19, T5N, R67W
FOUND 3 1/4" ALUM. CAP
L.S. NO. 7242

56" W 2632.50' (M)

WELLBORE
CONTINUES
INTO SECTION 20

CUMMINGS 19-5HZ
SURFACE LOCATION

N 89°58'22" W
2520.05' (M)

SEC. 19, T5N, R67W
FOUND 3 1/4"
ALUM. CAP
P.L.S. NO. 23520

CENTER. 1/4 COR.
SEC. 19, T5N, R67W
FOUND 3 1/4"
ALUM. CAP
L.S. NO. 33642

19

SURFACE LOCATION: NAD 83
GROUND ELEVATION= 4857.2'
LATITUDE= 40.389050°
LONGITUDE= -104.940716°
LATITUDE= 40°23'20.580"
LONGITUDE= -104°56'26.576"
HEEL LOCATION: NAD 83
LATITUDE= 40.389988°
LONGITUDE= -104.944612°
LATITUDE= 40°23'23.957"
LONGITUDE= -104°56'40.605"
BOTTOM HOLE LOCATION: NAD 83
LATITUDE= 40.389816°
LONGITUDE= -104.909121°
LATITUDE= 40°23'23.338"
LONGITUDE= -104°54'32.836"

E. 1/4 COR.
SEC. 19, T5N, R67W
FOUND 2 1/2" ALUM. CAP
L.S. NO. 30462

SE. COR.
SEC. 19, T5N, R67W
FOUND 2 1/2" ALUM. CAP
L.S. NO. 12374

CERTIFICATE OF SURVEYOR:

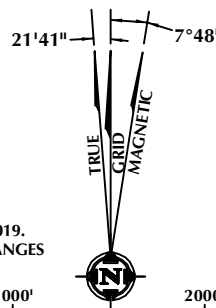
THIS IS TO CERTIFY THAT THE ABOVE PLAT WAS PREPARED FROM FIELD NOTES OF ACTUAL SURVEY MADE BY ME OR UNDER MY SUPERVISION AND THAT THE SAME IS TRUE AND CORRECT TO THE BEST OF MY KNOWLEDGE AND BELIEF. THIS CERTIFICATE DOES NOT REPRESENT A LAND SURVEY PLAT OR IMPROVEMENT SURVEY PLAT AS DEFINED BY C.S. 49-1-102 AND CANNOT BE RELIED UPON TO DETERMINE OWNERSHIP.

Handwritten signature: Randall K. French
 RANDALL K. FRENCH
 PROFESSIONAL LAND SURVEYOR
 COLORADO REGISTRATIONS NUMBER: 38512
 4/26/19

NOTICE: ACCORDING TO COLORADO STATE LAW YOU MUST COMMENCE ANY LEGAL ACTION BASED UPON ANY DEFECT IN THIS SURVEY WITHIN THREE YEARS AFTER YOU FIRST DISCOVER SUCH DEFECT. IN NO EVENT MAY ANY ACTION BASED UPON ANY DEFECT IN THIS SURVEY BE COMMENCED MORE THAN TEN YEARS FROM THE DATE ON THE CERTIFICATION SHOWN HEREON.

**NOTE:
MAGNETIC NORTH IS
CURRENT AS OF 3/20/2019.
MAGNETIC NORTH CHANGES
WEST 0°06' PER YEAR.**

SCALE: 1" = 1000'



- NOTES:**

1. ▲ INDICATES SECTION CORNER.
2. ◎ INDICATES CALCULATED CORNER.
3. DRAWING LATITUDE AND LONGITUDE COORDINATES ARE NAD 83 (2011) (EPOCH:2010).
4. ELEVATION BASED ON NAVD88 (GEOID12B).
5. BASIS OF BEARING DERIVED FROM COLORADO COORDINATE SYSTEM OF 1983 NORTH ZONE.
6. ALL MEASURED DISTANCES ARE GRID.
COMBINED SCALE FACTOR: .99972932 CALCULATED FROM THE NW. CORNER OF SECTION 19, T5N, R67W.
7. OPERATOR: TRAVIS HOLLAND / PDOP = 1.5.
8. SEE ADDENDUM TO WELL LOCATION CERTIFICATE FOR EXISTING IMPROVEMENTS WITHIN 500' OF THE WELL PAD.
9. WELL FOOTAGES ARE MEASURED AT RIGHT ANGLES TO THE SECTION LINES.
10. THE BOTTOM OF HOLE BEARS N89°59'35"E, 9886' FROM THE HEEL LOCATION.
11. NO. 1 & NO. 2 AS SHOWN HEREON ARE GOVERNMENT LOTS 1 & 2 PER THE ORIGINAL GLO SURVEY.

WELL PAD - CUMMINGS 18-19HZ

**CUMMINGS 19-5HZ
WELL LOCATION CERTIFICATE**

1235' FNL & 1165' FWL LOT 2 (NWNW) (SURFACE)
899' FNL & 75' FWL LOT 2 (NWNW) (HEEL)
LOCATED IN SECTION 19
936' FNL & 475' FEL NENE (BOTTOM)
LOCATED IN SECTION 20
T5N, R67W, 6TH P.M.
WELD COUNTY, COLORADO

**Kerr-McGee Oil &
Gas Onshore L.P.**
1099 18th Street
Denver, Colorado 80202



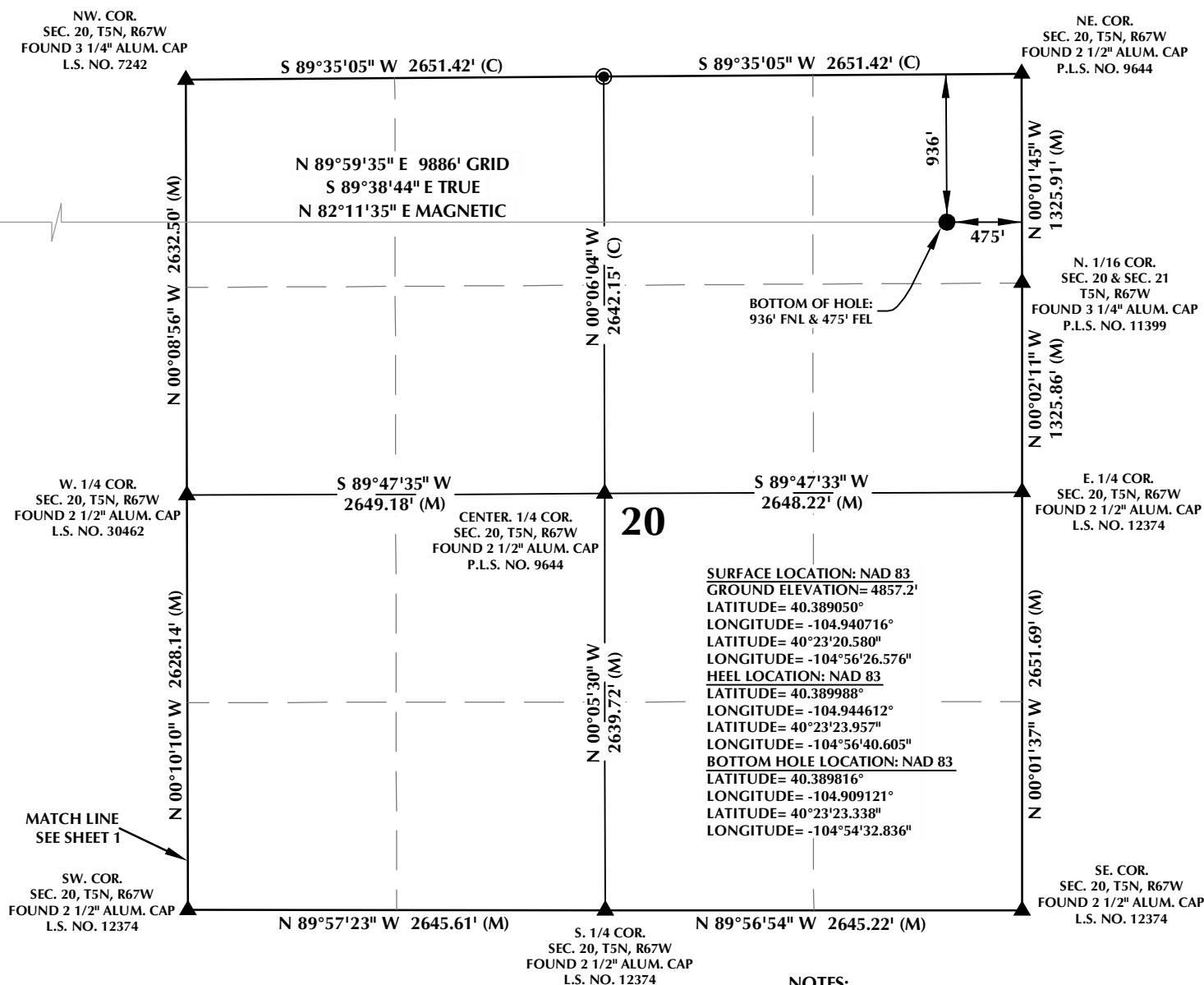
CONSULTING, LLC

SHERIDAN OFFICE
1095 Saberton Avenue
Sheridan, Wyoming 82801
Phone 307-674-0609

LOVELAND OFFICE
6706 North Franklin Avenue
Loveland, Colorado 80538
Phone 970-776-4331

DRAFTED BY: LMO	CHECKED BY: RKF	SHEET NO: 1 1 OF 2
DATE DRAFTED: 4/26/19	DATE SURVEYED: 3/20/19	
REVISED:	FILE NAME: 18-159	

T5N, R67W



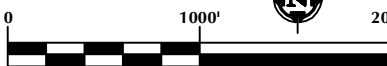
CERTIFICATE OF SURVEYOR:

THIS IS TO CERTIFY THAT THE ABOVE PLAT WAS PREPARED FROM FIELD NOTES OF ACTUAL SURVEY MADE BY ME OR UNDER MY SUPERVISION AND THAT THE SAME ARE TRUE AND CORRECT TO THE BEST OF MY KNOWLEDGE AND BELIEF. THIS CERTIFICATE DOES NOT REPRESENT A LAND SURVEY PLAT OR IMPROVEMENT SURVEY PLAT AS DEFINED BY C.R.S. 19-51-302 AND CANNOT BE RELIED UPON TO DETERMINE OWNERSHIP.

Randall K. French
 RANDALL K. FRENCH
 PROFESSIONAL LAND SURVEYOR
 COLORADO REGISTRATION NUMBER: 38512
 4/26/19

NOTICE:
 ACCORDING TO COLORADO STATE LAW YOU MUST COMPLY WITH ALL ACTIONS BASED UPON ANY DEFECT IN THIS SURVEY WITHIN THREE YEARS AFTER YOU FIRST DISCOVER SUCH DEFECT. IN NO EVENT MAY ANY ACTION BASED UPON ANY DEFECT IN THIS SURVEY BE COMMENCED MORE THAN TEN YEARS FROM THE DATE ON THE CERTIFICATION SHOWN HEREON.

NOTE:
 MAGNETIC NORTH IS
 CURRENT AS OF 3/20/2019.
 MAGNETIC NORTH CHANGES
 WEST 0°06' PER YEAR.



SCALE: 1" = 1000'

NOTES:

- ▲ INDICATES SECTION CORNER.
- INDICATES CALCULATED CORNER.
- DRAWING LATITUDE AND LONGITUDE COORDINATES ARE NAD 83 (2011)(EPOCH:2010).
- ELEVATION BASED ON NAVD88 (GEOID12B).
- BASIS OF BEARING DERIVED FROM COLORADO COORDINATE SYSTEM OF 1983 NORTH ZONE.
- ALL MEASURED DISTANCES ARE GRID.
- COMBINED SCALE FACTOR: .99972932 CALCULATED FROM THE NW. CORNER OF SECTION 19, T5N, R67W.
- OPERATOR: TRAVIS HOLLAND / PDOP = 1.5.
- SEE ADDENDUM TO WELL LOCATION CERTIFICATE FOR EXISTING IMPROVEMENTS WITHIN 500' OF THE WELL PAD.
- WELL FOOTAGES ARE MEASURED AT RIGHT ANGLES TO THE SECTION LINES.
- THE BOTTOM OF HOLE BEARS N89°59'35"E, 9886' FROM THE HEEL LOCATION.

WELL PAD - CUMMINGS 18-19HZ

CUMMINGS 19-5HZ
WELL LOCATION CERTIFICATE
 1235' FNL & 1165' FWL LOT 2 (NWNW) (SURFACE)
 899' FNL & 75' FWL LOT 2 (NWNW) (HEEL)
 LOCATED IN SECTION 19
 936' FNL & 475' FEL NENE (BOTTOM)
 LOCATED IN SECTION 20
 T5N, R67W, 6TH P.M.
 WELD COUNTY, COLORADO

**Kerr-McGee Oil &
 Gas Onshore L.P.**
 1099 18th Street
 Denver, Colorado 80202

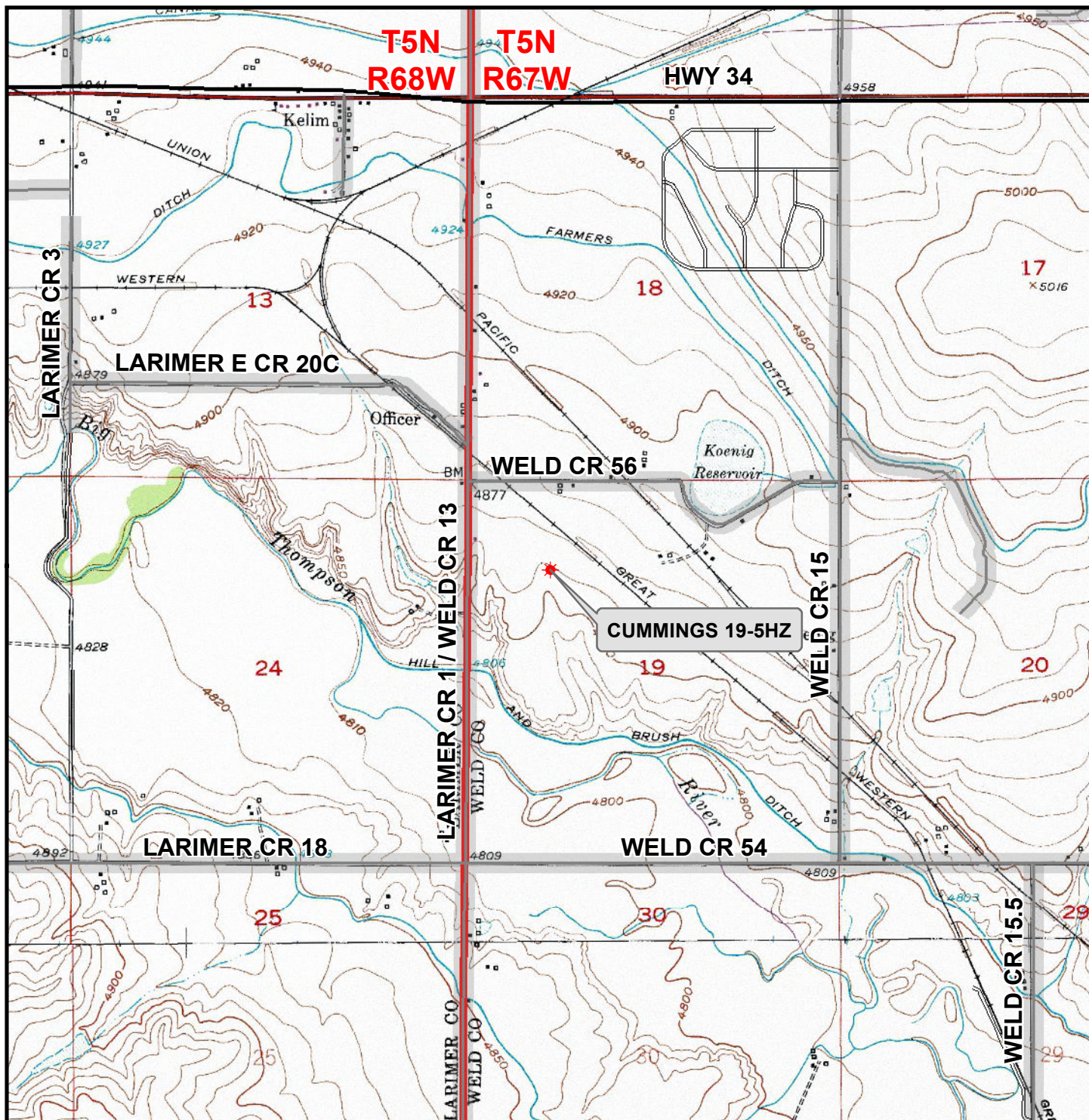


CONSULTING, LLC

SHERIDAN OFFICE
 1095 Saberton Avenue
 Sheridan, Wyoming 82801
 Phone 307-674-0609

LOVELAND OFFICE
 6706 North Franklin Avenue
 Loveland, Colorado 80538
 Phone 970-776-4331

DRAFTED BY:	LMO	CHECKED BY:	RKF	SHEET NO:
DATE DRAFTED:	4/26/19	DATE SURVEYED:	3/20/19	2
REVISED:		FILE NAME:	18-159	2 OF 2



Legend

- ★ Well - Proposed
- ==== Road - Primitive - Existing
- Road - County - Existing
- Road - Improved - Existing
- Road - Highway - Existing

WELL PAD - CUMMINGS 18-19HZ

**GENERAL LOCATION MAP
CUMMINGS 19-5HZ
LOCATED IN SECTION 19
T5N, R67W, 6th P.M.
WELD COUNTY, COLORADO**

**Kerr-McGee Oil &
Gas Onshore L.P.**

1099 18th Street
Denver, Colorado 80202



CONSULTING, LLC

SHERIDAN OFFICE
1095 Saberton Avenue
Sheridan, Wyoming 82801
Phone 307-674-0609

LOVELAND OFFICE
6706 North Franklin Avenue
Loveland, Colorado 80538
Phone 970-776-4331



SCALE: 1" = 2,000ft

NAD83 CO-Nft

DRAWN: DP

DATE: 21 Mar 2019

REVISED:

DATE: