



FORM F-106



00655122

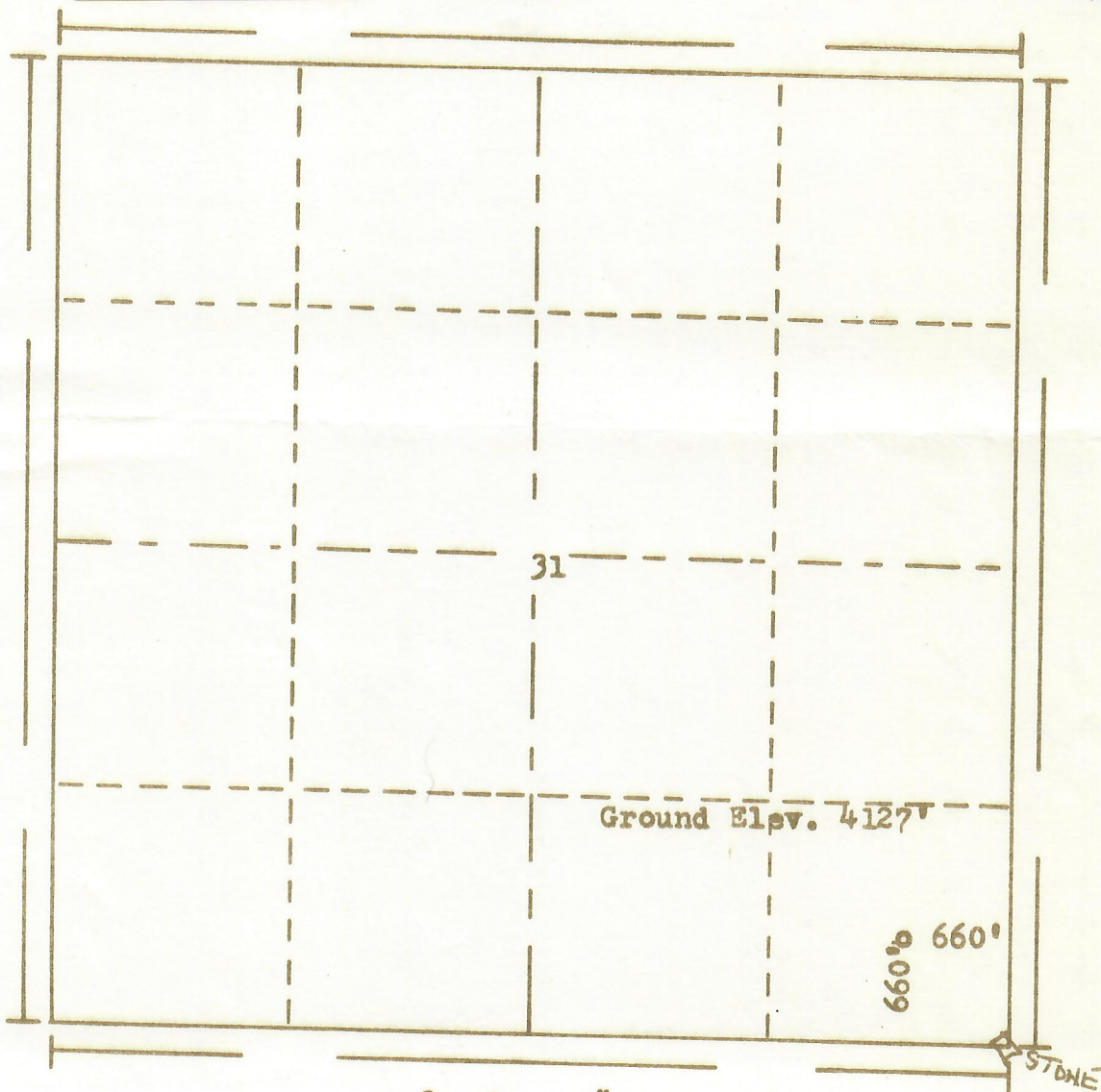
R. 45W

RECEIVED

JAN 31 1974

GOLD, OIL & GAS CORP. COMM.

N



Scale... 1" = 1000'

Powers Elevation Company, Inc. of Denver, Colorado
has in accordance with a request from Mr. Ackman
for Edward J. Ackman
determined the location of No. 1 Greenwood
to be CSE SE Section 31 Township 25S
Range 45W of the 6th Principal Meridian
Prowers County, Colorado

I hereby certify that this plat is an
accurate representation of a correct
survey showing the location of

BEST IMAGE
AVAILABLEDate: 1-25-74

Bird J. Hall
Licensed Land Surveyor No. 2853
State of Colorado