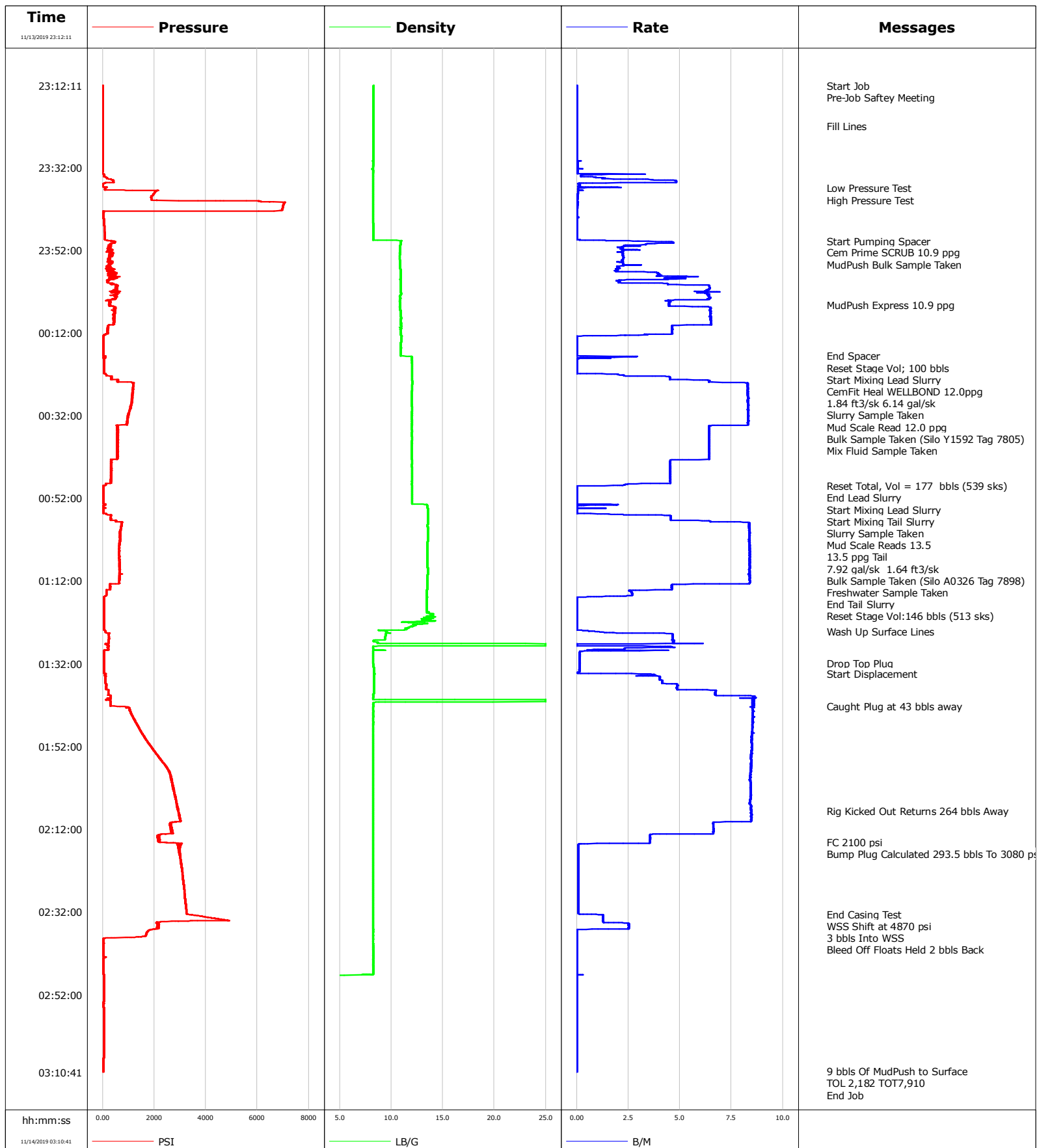


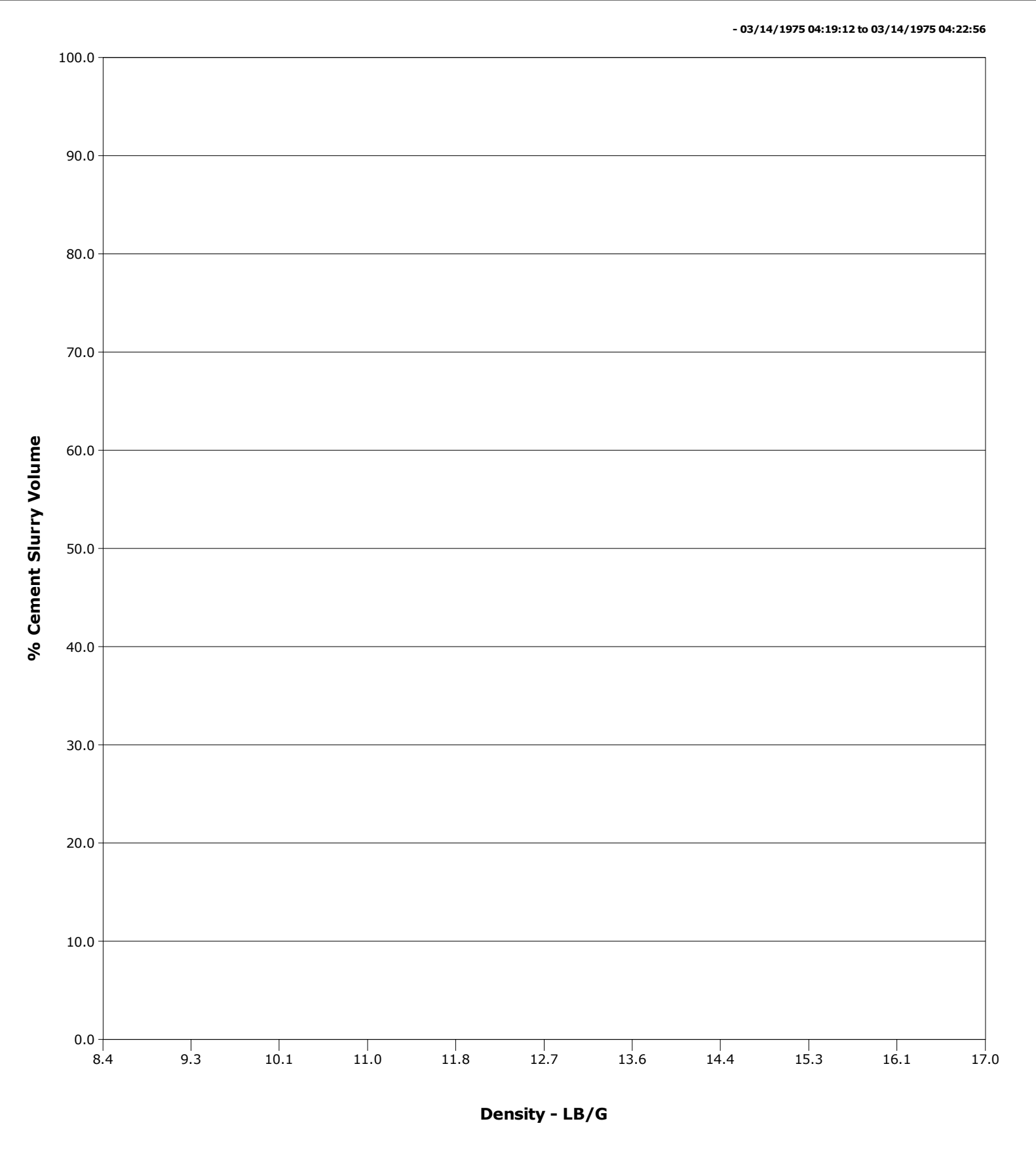
<b>Well</b>	Jodster South 25-9HZ	<b>Client</b>	Anadarko
<b>Field</b>	Wattenberg	<b>SIR No.</b>	3088154
<b>Engineer</b>	Jermarco Arrington / Sheldon Bell	<b>Job Type</b>	Cem Prod Casing
<b>Country</b>		<b>Job Date</b>	





# Cementing Qa/Qc Density Report

<b>Well</b>	Jodster South 25-9HZ	<b>Client</b>	Anadarko
<b>Field</b>	Wattenberg	<b>SIR No.</b>	3088154
<b>Engineer</b>	Jermarco Arrington / Sheldon Bell	<b>Job Type</b>	Cem Prod Casing
<b>Country</b>		<b>Job Date</b>	



# Cementing Service Report

				Customer Anadarko				Job Number 3088154							
Well Jodster South 25-9HZ 0065912235			Location (legal)			Schlumberger Location			Job Start Nov/13/2019						
Field Wattenberg		Formation Name/Type			Deviation deg		Bit Size 7.8 in		Well MD ft		Well TVD 6913.0 ft				
County Weld		State/Province Colorado			BHP psi		BHST 230 degF		BHCT 230 degF		Pore Press. Gradient lb/gal				
Well Master 0065912235		API/UWI 05-069-06503-00-00													
Rig Name Precision 564		Drilled For Oil		Service Via Land		Casing/ Liner									
						Depth, ft		Size, in		Weight, lb/ft		Grade	Thread		
Offshore Zone		Well Class New		Well Type Development		12635.0		5.5		17.0		P110	8RD		
						1879.0		9.6		36.0		J-55	8RD		
Drilling Fluid Type OBM		Max. Density 9.30 lb/gal		Plastic Viscosity 75.000 cP		Tubing/Drill Pipe									
						T/D		Depth, ft		Size, in		Weight, lb/ft		Grade	Thread
Service Line Cementing		Job Type Cem Prod Casing													
Max. Allowed Tub. Press psi		Max. Allowed Ann. Press psi		WH Connection		Perforations/Open Hole									
						Top, ft		Bottom, ft		shot/ft		No. of Shots		Total Interval ft	
<b>Service Instructions</b> 9 5/8" 36# Previous Casing: 1,879' 7 7/8" OH to TD OH Excess: 4% Top of Lead Cement: 2,182ft Top of Tail Cement: 7,910ft TD: 12,642' Temp Gradient 2.3 degF/100ft Bring 5 1/2" Head (Double Plug), Bowls, Top and Bottom Plugs Bring Defoamer, 400 lbs Sugar, and						ft		ft						Diameter in	
						ft		ft							
						ft		ft							
								Treat Down Casing		Displacement 293.5 bbl		Packer Type		Packer Depth ft	
						Tubing Vol. bbl		Casing Vol. 294.0 bbl		Annular Vol. 422.0 bbl		Openhole Vol. 332.0 bbl			
Casing/Tubing Secured <input type="checkbox"/>		1 Hole Vol. Circulated prior to Cement <input type="checkbox"/>				Casing Tools				Squeeze Job					
Lift Pressure 9041 psi						Shoe Type Float				Squeeze Type					
Pipe Rotated <input type="checkbox"/>		Pipe Reciprocated <input type="checkbox"/>				Shoe Depth 12.0 ft				Tool Type					
No. Centralizers		Top Plugs 1		Bottom Plugs 1		Stage Tool Type				Tool Depth ft					
Cement Head Type Single						Stage Tool Depth ft				Tail Pipe Size in					
Job Scheduled For Nov/13/2019 19:30		Arrived on Location Nov/13/2019 19:30		Leave Location Nov/14/2019 02:00		Collar Type Float				Tail Pipe Depth ft					
						Collar Depth 12.0 ft				Sqz. Total Vol. bbl					
Date	Time 24-hr clock	CPF1_PRESS PSI		CPF1_DENSITY LB/G		CPF1_TTL_RATE B/M		Message							
11/13/2019	23:12:11	4		8.29		0.0		Started Acquisition							
11/13/2019	23:12:14	4		8.29		0.0		Start Job							
11/13/2019	23:12:16	4		8.29		0.0		Pre-Job Safety Meeting							
11/13/2019	23:22:00	3		8.29		0.0		Fill Lines							
11/13/2019	23:37:00	105		8.24		0.1		Low Pressure Test							
11/13/2019	23:40:00	2105		8.25		0.0		High Pressure Test							
11/13/2019	23:49:41	211		10.82		1.4		Start Pumping Spacer							
11/13/2019	23:50:58	241		10.87		2.3		Cem Prime SCRUB 10.9 ppg							
11/13/2019	23:52:03	324		10.84		2.3		MudPush Bulk Sample Taken							
11/14/2019	00:05:14	247		10.87		4.5		MudPush Express 10.9 ppg							
11/14/2019	00:17:33	33		10.93		0.0		End Spacer							
11/14/2019	00:17:39	102		11.47		1.7		Reset Stage Vol; 100 bbls							
11/14/2019	00:17:41	96		11.84		2.4		Start Mixing Lead Slurry							
11/14/2019	00:19:42	44		11.99		0.0		CemFit Heal WELLBOND 12.0ppg							
11/14/2019	00:21:13	45		11.99		0.0		1.84 ft3/sk 6.14 gal/sk							
11/14/2019	00:22:00	113		12.01		2.0		Slurry Sample Taken							
11/14/2019	00:22:50	345		12.02		4.5		Mud Scale Read 12.0 ppg							
11/14/2019	00:23:20	614		12.03		4.9		Bulk Sample Taken (Silo Y1592 Tag 7805)							
11/14/2019	00:25:37	1180		11.99		8.3		Mix Fluid Sample Taken							
11/14/2019	00:49:01	34		12.00		0.2		Reset Total, Vol = 177 bbls (539 sks)							
11/14/2019	00:49:48	34		12.01		0.0		End Lead Slurry							

Well		Field	Job Start	Customer	Job Number
Jodster South 25-9HZ 0065912235		Wattenberg	Nov/13/2019	Anadarko	3088154
Date	Time 24-hr clock	CPF1_PRESS PSI	CPF1_DENSITY LB/G	CPF1_TTL_RATE B/M	Message
11/14/2019	00:53:56	31	13.47	0.0	Start Mixing Tail Slurry
11/14/2019	00:55:05	32	13.55	0.0	Slurry Sample Taken
11/14/2019	00:58:06	728	13.52	8.4	Mud Scale Reads 13.5
11/14/2019	01:00:04	688	13.54	8.4	13.5 ppg Tail
11/14/2019	01:02:04	679	13.54	8.3	7.92 gal/sk 1.64 ft3/sk
11/14/2019	01:10:04	657	13.53	8.4	Bulk Sample Taken (Silo A0326 Tag 7898)
11/14/2019	01:10:05	653	13.53	8.4	Freshwater Sample Taken
11/14/2019	01:15:27	144	13.44	2.7	End Tail Slurry
11/14/2019	01:16:00	50	13.46	0.0	Reset Stage Vol:146 bbls (513 sks)
11/14/2019	01:24:04	98	9.46	0.6	Wash Up Surface Lines
11/14/2019	01:31:52	44	8.24	0.1	Drop Top Plug
11/14/2019	01:34:30	117	8.37	3.5	Start Displacement
11/14/2019	01:42:15	447	8.25	8.5	Caught Plug at 43 bbls away
11/14/2019	02:07:35	2938	8.24	8.5	Rig Kicked Out Returns 264 bbls Away
11/14/2019	02:15:27	3073	8.25	1.0	Bump Plug Calculated 293.5 bbls To 3080 psi
11/14/2019	02:32:32	3312	8.25	0.3	End Casing Test
11/14/2019	02:34:03	4870	8.25	1.3	WSS Shift at 4870 psi
11/14/2019	02:34:30	2115	8.25	1.3	3 bbls Into WSS
11/14/2019	02:38:22	58	8.25	0.0	Bleed Off Floats Held 2 bbls Back
11/14/2019	03:10:32	22	-0.00	0.0	9 bbls Of MudPush to Surface
11/14/2019	03:10:33	22	-0.00	0.0	TOL 2,182 TOT7,910

### Post Job Summary

Average Pump Rates, bbl/min				Volume of Fluid Injected, bbl					
Slurry 4.4	N2	Mud	Maximum Rate 8.7	Total Slurry 766.9	Mud 0.0	Spacer 6.2	N2		
Treating Pressure Summary, psi				Breakdown Fluid					
Maximum 7082	Final 0	Average 876	Bump Plug to 3080	Breakdown	Type FreshWater	Volume bbl	Density 8.34 lb/gal		
Avg. N2 Percent %	Designed Slurry Volume 0.0 bbl	Displacement 298.7 bbl	Mix Water Temp 70 degF	Cement Circulated to Surface? <input type="checkbox"/>		Volume bbl			
				Washed Thru Perfs <input type="checkbox"/>		To ft			
Customer or Authorized Representative James Atkins		Schlumberger Supervisor Jermarco Arrington / Sheldon Bell			Circulation Lost <input type="checkbox"/>	Job Completed <input checked="" type="checkbox"/>			
					-	-			