

T4S, R96W, 6th P.M.

Caerus Oil & Gas LLC

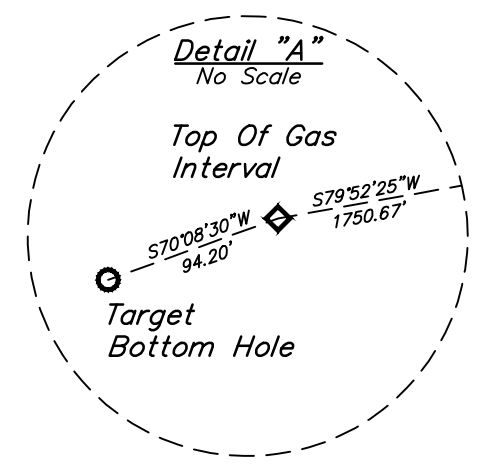
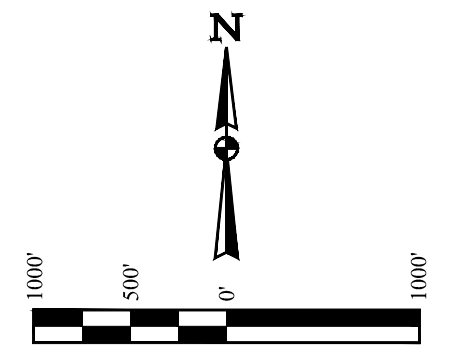
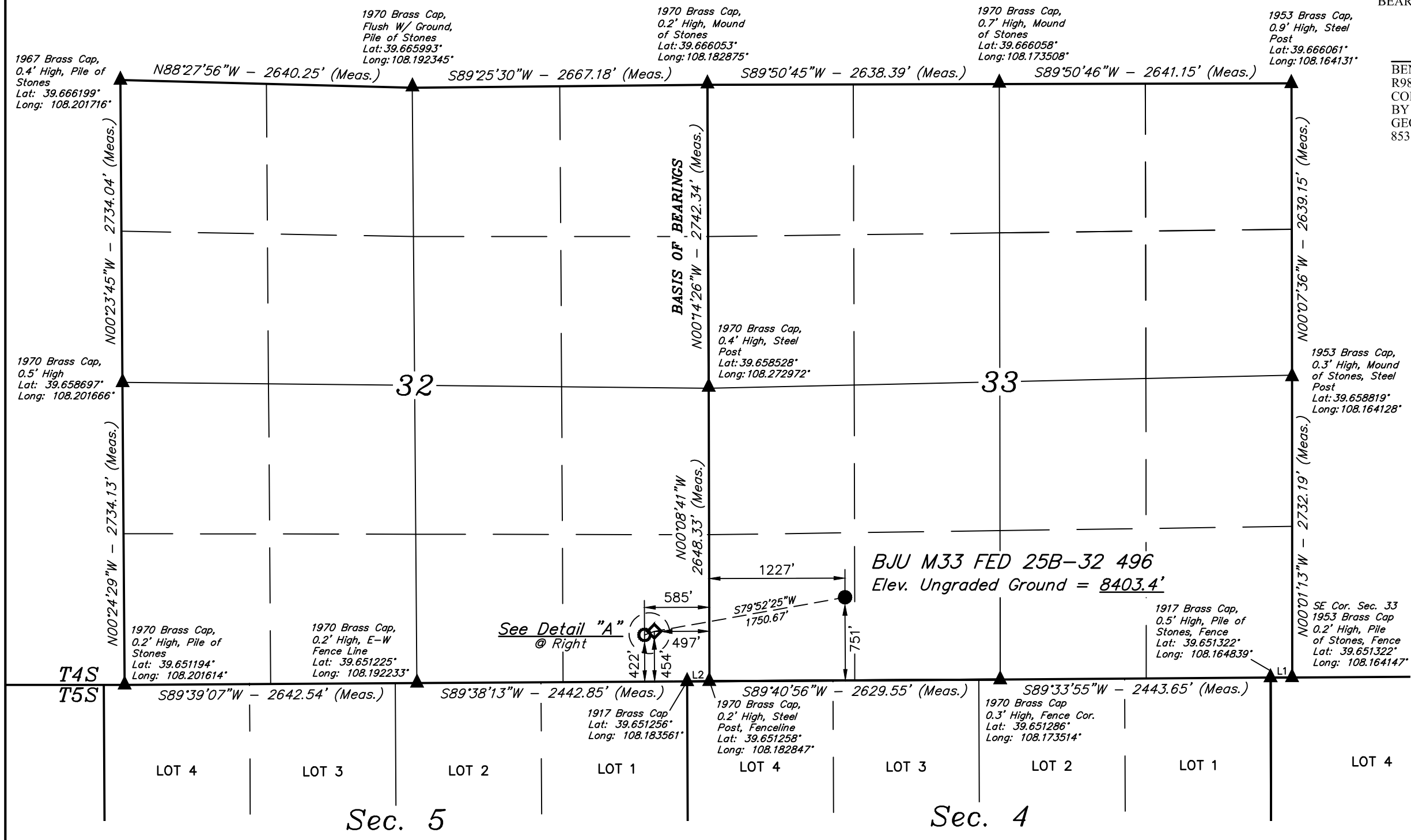
BJU M33 FED 25B-32 496
SW 1/4 SW 1/4, SECTION 33, T4S, R96W, 6th P.M.
GARFIELD COUNTY, COLORADO

BASIS OF BEARINGS

BEARINGS ARE A BASED ASSUMPTION THAT THE WEST LINE OF THE NORTHWEST 1/4 OF SECTION 33 BEARS N00°14'26"W. MONUMENTS DESCRIBED HEREON.

BASIS OF ELEVATION

BENCH MARK (H79) LOCATED IN THE NE 1/4 OF SECTION 35, T4S, R98W, 6th P.M., TAKEN FROM THE BULL FORK, QUADRANGLE, COLORADO, 7.5 MINUTE SERIES (TOPOGRAPHIC MAP) PUBLISHED BY THE UNITED STATES DEPARTMENT OF THE INTERIOR, GEOLOGICAL SURVEY. SAID ELEVATION IS MARKED AS BEING 8535 FEET.



CERTIFICATE OF SURVEY
 THIS IS TO CERTIFY THAT THE ABOVE PLAT WAS PREPARED AND THE LOCATION AS SHOWN WAS STAKED ON THE GROUND FROM FIELD NOTES OF ACTUAL SURVEYS MADE BY ME OR UNDER MY SUPERVISION AND THAT THE SAME ARE TRUE AND CORRECT TO THE BEST OF MY KNOWLEDGE AND BELIEF.
 REGISTERED PROFESSIONAL SURVEYOR
 REGISTRATION NO. 38130
 STATE OF COLORADO 01-16-20

- LEGEND:**
- = PROPOSED WELLHEAD.
 - ◆ = TOP OF GAS INTERVAL.
 - = TARGET BOTTOM HOLE.
 - ▲ = SECTION CORNERS LOCATED. (NAD 83)

LINE TABLE		
LINE	DIRECTION	LENGTH
L1	N89°53'21"E	195.03'
L2	S89°26'45"W	200.90'

NAD 83 (SURFACE LOCATION)	NAD 83 (TOP OF GAS INTERVAL)	NAD 83 (TARGET BOTTOM HOLE)
LATITUDE = 39°39'11.99" (39.653331)	LATITUDE = 39°39'08.99" (39.652496)	LATITUDE = 39°39'08.67" (39.652409)
LONGITUDE = 108°10'42.57" (108.178492)	LONGITUDE = 108°11'04.60" (108.184612)	LONGITUDE = 108°11'05.74" (108.184927)
NAD 27 (SURFACE LOCATION)	NAD 27 (TOP OF GAS INTERVAL)	NAD 27 (TARGET BOTTOM HOLE)
LATITUDE = 39°39'12.08" (39.653356)	LATITUDE = 39°39'09.07" (39.652520)	LATITUDE = 39°39'08.76" (39.652433)
LONGITUDE = 108°10'40.28" (108.177855)	LONGITUDE = 108°11'02.31" (108.183975)	LONGITUDE = 108°11'03.44" (108.184290)
UTM COORD.:NAD 27/ZONE 12	UTM NAD 27 (ZONE 12)	UTM NAD 27 (ZONE 12)
N: 14412313.78 E: 2434823.96	N: 14411955.40 E: 2433110.55	N: 14411920.81 E: 2433022.94

PDOP = 1.4

REV: 1 01-16-20 T.L.L. (TGI & BHL CHANGES)

UINTEAH
ENGINEERING & LAND SURVEYING

UELS, LLC
Corporate Office * 85 South 200 East
Vernal, UT 84078 * (435) 789-1017

SURVEYED BY	DAYTON SLAUGH	09-16-19	SCALE
DRAWN BY	M.D.	01-03-20	1" = 1000'

WELL LOCATION PLAT