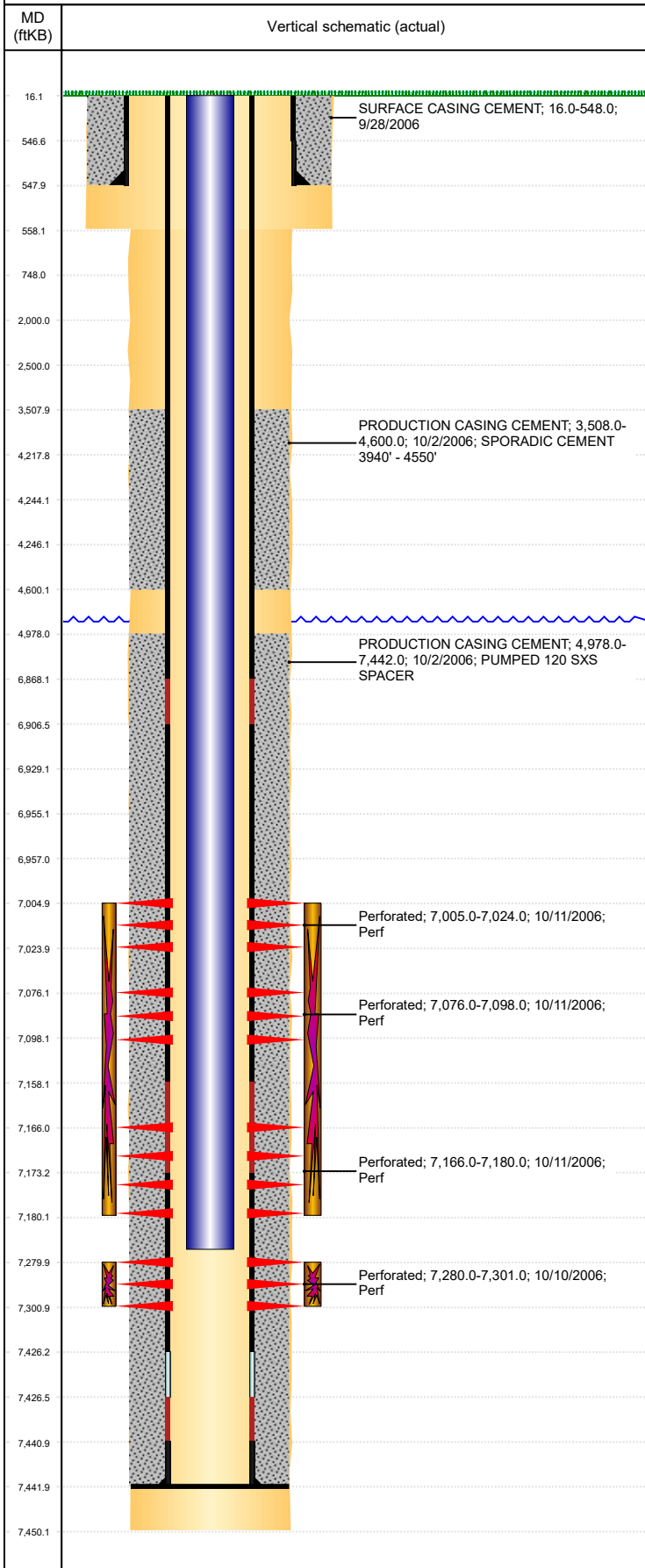


**Well Name: RURAL 31-15**

VERTICAL, ORIGINAL HOLE, 1/23/2020 9:38:59 AM



Well Header									
API 05-123-23990		Business Unit DJ BASIN			District 15		Well Config VERTICAL		
KB - GL / MSL (ft... 16.00		Spud Date 9/27/2006		P & A Date		Well Production Status SI			SoRT No
Comment LITTLE INFO IN FILE. STATE SHOWS SHUT IN SINCE MAR 2017. FIELD OPS NOTICE- FLOWLINES ABANDONED, RCVD 6/29/17.									
Surface Location (Congressional)									
Qtr 3 SE	Qtr 4 NE	Section 31	Twnshp 4	Twnsh... N	Range 65	Rng E/... W	Actual Latitude (°) 40.27258000	Actual Longitude (°) -104.70014000	
Wellbore Sections									
Section Des			Size (in)			Act Top, MD (ftKB)		Act Btm, MD (ftKB)	
SURFACE			12 1/4			16		558	
PRODUCTION			7 7/8			558		7,450	
Casing Strings									
Csg Des			Run Date		OD (in)	Wt/Len (lb/ft)	Grade	Top, MD (ftKB)	MD (ftKB)
Surface			9/28/2006		8 5/8	24.00		16.0	548.0
Production			10/2/2006		4 1/2	11.60	M-80	16.0	7,442.0
Cement									
Des					Start Date		Top (ftKB)		Btm (ftKB)
SURFACE CASING CEMENT					9/28/2006		16.0		548.0
PRODUCTION CASING CEMENT					10/2/2006		3,508.0		4,600.0
PRODUCTION CASING CEMENT					10/2/2006		4,978.0		7,442.0
Zone Statuses									
Zone Name		Status Date	Status	Fluid Type	Job			Prod Method	
NIOBRARA		10/12/2006	PR	Water	DRILLING/COMPLETION - ORIGINAL, 9/27/2006...			Flowing	
NIOBRARA		5/13/2010	PR						
CODELL		5/13/2010	PR						
CODELL		3/10/2017	SI					Flowing	
Perforation Data									
Linked Zone			Bnch/Stg	Entered Shot Total	Top (ftKB)		Btm (ftKB)		Date
NIOBRARA, ORIGINAL HOLE			A	38	7,005.00		7,024.00		10/11/2006
NIOBRARA, ORIGINAL HOLE			B	88	7,076.00		7,098.00		10/11/2006
NIOBRARA, ORIGINAL HOLE			C	42	7,166.00		7,180.00		10/11/2006
CODELL, ORIGINAL HOLE				84	7,280.00		7,301.00		10/10/2006
Stimulation Intervals									
Zone					Start Date		Top (ftKB)		Btm (ftKB)
NIOBRARA, ORIGINAL HOLE					10/11/2006		7,005.0		7,180.0
CODELL, ORIGINAL HOLE					10/11/2006		7,280.0		7,301.0
Other In Hole									
Run Date		Des				OD (in)	Top (ftKB)		Btm (ftKB)
1/22/2019		Plunger Lift				1 7/8			
Logs									
Date		Type					Top, MD (ftKB)		Btm, MD (ftKB)
10/2/2006		COMPENSATED DENSITY					3,800.0		7,478.0
10/2/2006		INDUCTION					548.0		7,498.0
10/11/2006		CBL/CCL/GR					3,400.0		7,428.0
5/8/2018		GYRO					16.0		7,200.0
Plug Back Total Depths									
Date		Type			Com				Depth (ftKB)
10/11/2006		CEMENT PLUG			DEPTH LOGGER ON CBL				7,430.0
5/3/2007		FILL			CLEAN OUT TO LAND TUBING				7,442.0