

Project: Garfield County, CO
 Site: NPM M33 496 Pad
 Well: BJU M33 FED 14B-33 496
 Wellbore: Wellbore #1
 Design: Design #1
 Latitude: 39.653678
 Longitude: -108.177701
 Ground Level: 8401.0
 RKB @ 8431.0usft (H&P #329)

FORMATION TOP DETAILS			
TVDPath	MDPath	Formation	
2394.0	2404.7	Wasatch	
5394.0	5420.1	Wasatch G	
5634.0	5661.4	Fort Union	
7465.0	7501.1	Ohio Creek	
7720.0	7756.2	TOG	
7720.0	7756.2	Williams Fork	
10322.0	10359.2	Cameo	
10950.0	10987.4	Rollins	

REFERENCE INFORMATION

Co-ordinate (N/E) Reference: Well BJU M33 FED 14B-33 496 - Slot BJU M33 FED 14B-33 496, True North
 Vertical (TVD) Reference: RKB @ 8431.0usft (H&P #329)
 Section (VS) Reference: Slot - BJU M33 FED 14B-33 496(0.0N, 0.0E)
 Measured Depth Reference: RKB @ 8431.0usft (H&P #329)
 Calculation Method: Minimum Curvature

WELL DETAILS: BJU M33 FED 14B-33 496

+N/-S 0.0 +E/-W 0.0 Northing 14412432.40 Easting 2434863.70 Latitude 39.653678 Longitude -108.177701

PROJECT DETAILS: Garfield County, CO

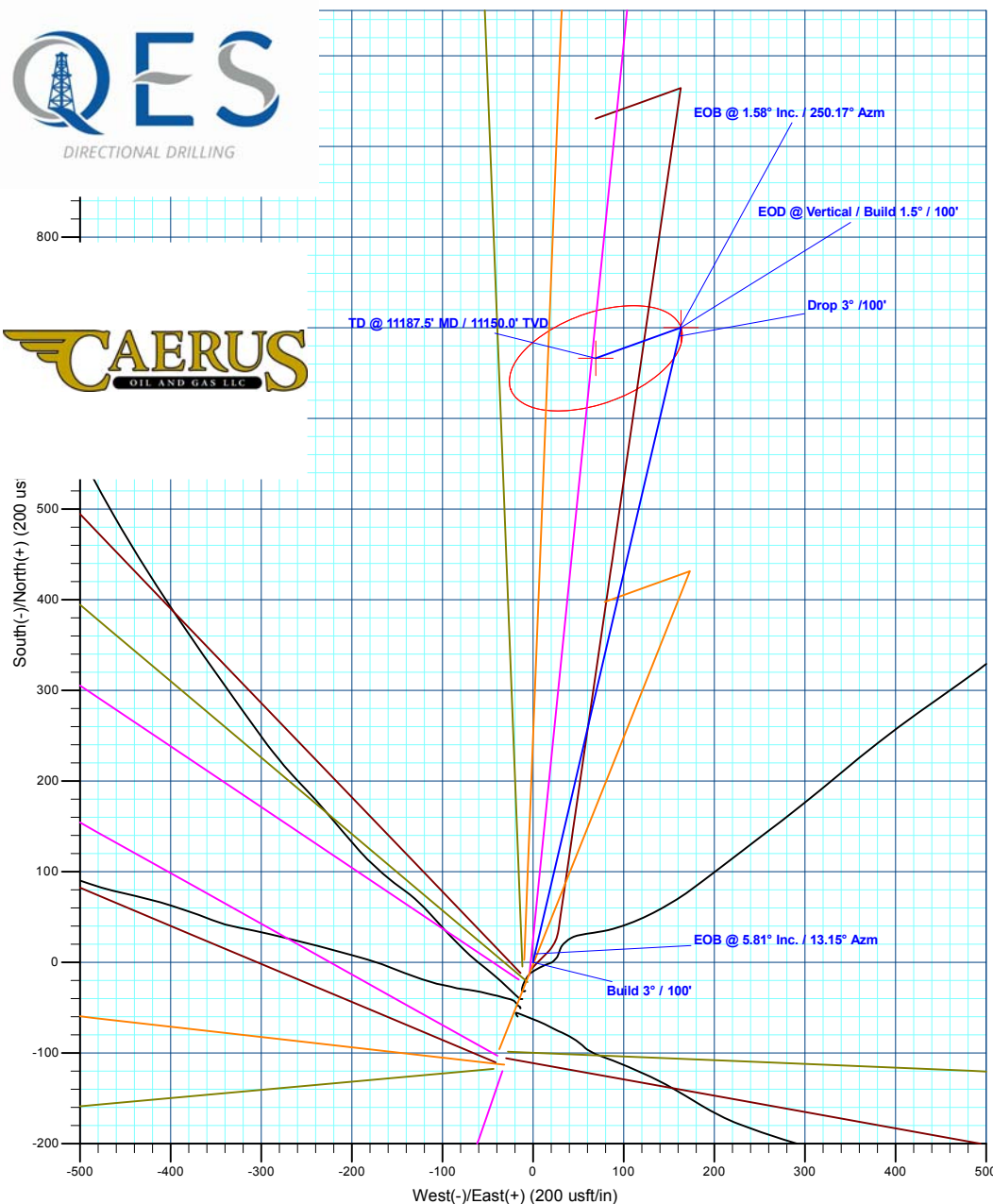
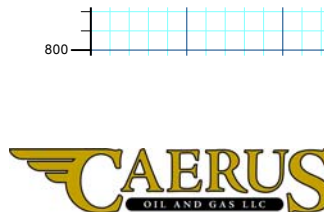
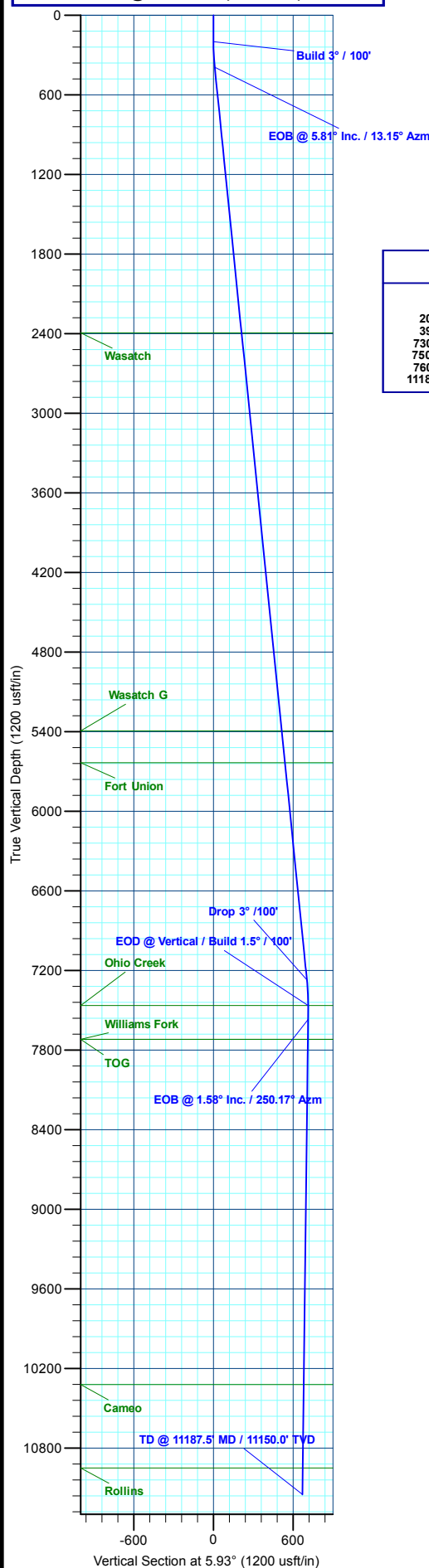
Geodetic System: Universal Transverse Mercator (US Survey Feet)
 Datum: NAD 1927 - Western US
 Ellipsoid: Clarke 1866
 Zone: Zone 12N (114 W to 108 W)
 System Datum: Mean Sea Level

DESIGN TARGET DETAILS

Name	TVD	+N/-S	+E/-W	Northing	Easting	Latitude	Longitude
OHCR - BJU M33 FED 14B-33 496	7465.0	700.4	163.3	14413137.58	2435004.85	39.655600	-108.177121
PBHL - BJU M33 FED 14B-33 496	11150.0	666.5	69.3	14413100.70	2434912.00	39.655507	-108.177455

SECTION DETAILS

MD	Inc	Azi	TVD	+N/-S	+E/-W	Dleg	TFace	VSection	Annotation
0.0	0.00	0.00	0.0	0.0	0.0	0.00	0.00	0.0	Build 3° / 100'
200.0	0.00	0.00	200.0	0.0	0.0	0.00	0.00	0.0	EOB @ 5.81° Inc. / 13.15° Azm
393.6	5.81	13.12	393.2	9.5	2.2	3.00	13.12	9.7	Drop 3° / 100'
7307.6	5.81	13.12	7271.8	690.8	161.0	0.00	0.00	703.8	EOB @ Vertical / Build 1.5° / 100'
7501.1	0.00	0.00	7465.0	700.4	163.3	3.00	180.00	713.5	EOB @ 1.58° Inc. / 250.17° Azm
7606.2	1.58	250.14	7570.0	699.9	161.9	1.50	250.14	712.9	TD @ 11187.5' MD / 11150.0' TVD
11187.5	1.58	250.14	11150.0	666.5	69.3	0.00	0.00	670.0	



Plan: Design #1 (BJU M33 FED 14B-33 496/Wellbore #1)

Created By: Will Jircik

Date: 14:48, December 16 2019



Caerus Oil & Gas

Garfield County, CO

NPM M33 496 Pad

BJU M33 FED 14B-33 496 - Slot BJU M33 FED 14B-33 496

Wellbore #1

Plan: Design #1

QES Well Planning Report

16 December, 2019



Database:	EDM 5000.1 Single User Db	Local Co-ordinate Reference:	Well BJU M33 FED 14B-33 496 - Slot BJU M33 FED 14B-33 496
Company:	Caerus Oil & Gas	TVD Reference:	RKB @ 8431.0usft (H&P #329)
Project:	Garfield County, CO	MD Reference:	RKB @ 8431.0usft (H&P #329)
Site:	NPM M33 496 Pad	North Reference:	True
Well:	BJU M33 FED 14B-33 496	Survey Calculation Method:	Minimum Curvature
Wellbore:	Wellbore #1		
Design:	Design #1		

Project	Garfield County, CO		
Map System:	Universal Transverse Mercator (US Survey Fee	System Datum:	Mean Sea Level
Geo Datum:	NAD 1927 - Western US		
Map Zone:	Zone 12N (114 W to 108 W)		

Site	NPM M33 496 Pad		
Site Position:		Northing:	14,415,354.00 usft
From:	Map	Easting:	2,447,010.80 usft
Position Uncertainty:	0.0 usft	Slot Radius:	13-3/16 "
		Latitude:	39.660635
		Longitude:	-108.134267
		Grid Convergence:	1.83 °

Well	BJU M33 FED 14B-33 496 - Slot BJU M33 FED 14B-33 496		
Well Position	+N/-S	-2,532.2 usft	Northing: 14,412,432.40 usft
	+E/-W	-12,234.2 usft	Easting: 2,434,863.70 usft
Position Uncertainty	0.0 usft	Wellhead Elevation:	Latitude: 39.653678
			Longitude: -108.177701
			Ground Level: 8,401.0 usft

Wellbore	Wellbore #1				
Magnetics	Model Name	Sample Date	Declination (°)	Dip Angle (°)	Field Strength (nT)
	HDGM_FILE	12/11/2019	9.48	65.82	51,258.40000000

Design	Design #1			
Audit Notes:				
Version:	Phase:	PLAN	Tie On Depth:	0.0
Vertical Section:	Depth From (TVD) (usft)	+N/-S (usft)	+E/-W (usft)	Direction (°)
	0.0	0.0	0.0	5.93

Plan Sections										
Measured Depth (usft)	Inclination (°)	Azimuth (°)	Vertical Depth (usft)	+N/-S (usft)	+E/-W (usft)	Dogleg Rate (°/100usft)	Build Rate (°/100usft)	Turn Rate (°/100usft)	TFO (°)	Target
0.0	0.00	0.00	0.0	0.0	0.0	0.00	0.00	0.00	0.00	
200.0	0.00	0.00	200.0	0.0	0.0	0.00	0.00	0.00	0.00	
393.6	5.81	13.12	393.2	9.5	2.2	3.00	3.00	0.00	13.12	
7,307.6	5.81	13.12	7,271.8	690.8	161.0	0.00	0.00	0.00	0.00	
7,501.1	0.00	0.00	7,465.0	700.4	163.3	3.00	-3.00	0.00	180.00	OHCR - BJU M33 F
7,606.2	1.58	250.14	7,570.0	699.9	161.9	1.50	1.50	-104.60	250.14	
11,187.5	1.58	250.14	11,150.0	666.5	69.3	0.00	0.00	0.00	0.00	PBHL - BJU M33 FI

Database:	EDM 5000.1 Single User Db	Local Co-ordinate Reference:	Well BJU M33 FED 14B-33 496 - Slot BJU M33 FED 14B-33 496
Company:	Caerus Oil & Gas	TVD Reference:	RKB @ 8431.0usft (H&P #329)
Project:	Garfield County, CO	MD Reference:	RKB @ 8431.0usft (H&P #329)
Site:	NPM M33 496 Pad	North Reference:	True
Well:	BJU M33 FED 14B-33 496	Survey Calculation Method:	Minimum Curvature
Wellbore:	Wellbore #1		
Design:	Design #1		

Planned Survey									
Measured Depth (usft)	Inclination (°)	Azimuth (°)	Vertical Depth (usft)	+N/-S (usft)	+E/-W (usft)	Vertical Section (usft)	Dogleg Rate (°/100usft)	Build Rate (°/100usft)	Turn Rate (°/100usft)
0.0	0.00	0.00	0.0	0.0	0.0	0.0	0.00	0.00	0.00
100.0	0.00	0.00	100.0	0.0	0.0	0.0	0.00	0.00	0.00
Build 3° / 100'									
200.0	0.00	0.00	200.0	0.0	0.0	0.0	0.00	0.00	0.00
300.0	3.00	13.12	300.0	2.5	0.6	2.6	3.00	3.00	0.00
EOB @ 5.81° Inc. / 13.15° Azm									
393.6	5.81	13.12	393.2	9.5	2.2	9.7	3.00	3.00	0.00
400.0	5.81	13.12	399.6	10.2	2.4	10.4	0.00	0.00	0.00
500.0	5.81	13.12	499.1	20.0	4.7	20.4	0.00	0.00	0.00
600.0	5.81	13.12	598.6	29.9	7.0	30.4	0.00	0.00	0.00
700.0	5.81	13.12	698.1	39.7	9.3	40.5	0.00	0.00	0.00
800.0	5.81	13.12	797.6	49.6	11.6	50.5	0.00	0.00	0.00
900.0	5.81	13.12	897.1	59.4	13.9	60.6	0.00	0.00	0.00
1,000.0	5.81	13.12	996.6	69.3	16.2	70.6	0.00	0.00	0.00
1,100.0	5.81	13.12	1,096.0	79.2	18.5	80.6	0.00	0.00	0.00
1,200.0	5.81	13.12	1,195.5	89.0	20.7	90.7	0.00	0.00	0.00
1,300.0	5.81	13.12	1,295.0	98.9	23.0	100.7	0.00	0.00	0.00
1,400.0	5.81	13.12	1,394.5	108.7	25.3	110.8	0.00	0.00	0.00
1,500.0	5.81	13.12	1,494.0	118.6	27.6	120.8	0.00	0.00	0.00
1,600.0	5.81	13.12	1,593.5	128.4	29.9	130.8	0.00	0.00	0.00
1,700.0	5.81	13.12	1,693.0	138.3	32.2	140.9	0.00	0.00	0.00
1,800.0	5.81	13.12	1,792.5	148.1	34.5	150.9	0.00	0.00	0.00
1,900.0	5.81	13.12	1,891.9	158.0	36.8	160.9	0.00	0.00	0.00
2,000.0	5.81	13.12	1,991.4	167.8	39.1	171.0	0.00	0.00	0.00
2,100.0	5.81	13.12	2,090.9	177.7	41.4	181.0	0.00	0.00	0.00
2,200.0	5.81	13.12	2,190.4	187.5	43.7	191.1	0.00	0.00	0.00
2,300.0	5.81	13.12	2,289.9	197.4	46.0	201.1	0.00	0.00	0.00
2,400.0	5.81	13.12	2,389.4	207.3	48.3	211.1	0.00	0.00	0.00
Wasatch									
2,404.7	5.81	13.12	2,394.0	207.7	48.4	211.6	0.00	0.00	0.00
2,500.0	5.81	13.12	2,488.9	217.1	50.6	221.2	0.00	0.00	0.00
2,600.0	5.81	13.12	2,588.3	227.0	52.9	231.2	0.00	0.00	0.00
2,700.0	5.81	13.12	2,687.8	236.8	55.2	241.3	0.00	0.00	0.00
2,800.0	5.81	13.12	2,787.3	246.7	57.5	251.3	0.00	0.00	0.00
2,900.0	5.81	13.12	2,886.8	256.5	59.8	261.3	0.00	0.00	0.00
3,000.0	5.81	13.12	2,986.3	266.4	62.1	271.4	0.00	0.00	0.00
3,100.0	5.81	13.12	3,085.8	276.2	64.4	281.4	0.00	0.00	0.00
3,200.0	5.81	13.12	3,185.3	286.1	66.7	291.5	0.00	0.00	0.00
3,300.0	5.81	13.12	3,284.8	295.9	69.0	301.5	0.00	0.00	0.00
3,400.0	5.81	13.12	3,384.2	305.8	71.3	311.5	0.00	0.00	0.00
3,500.0	5.81	13.12	3,483.7	315.7	73.6	321.6	0.00	0.00	0.00
3,600.0	5.81	13.12	3,583.2	325.5	75.9	331.6	0.00	0.00	0.00
3,700.0	5.81	13.12	3,682.7	335.4	78.2	341.6	0.00	0.00	0.00
3,800.0	5.81	13.12	3,782.2	345.2	80.5	351.7	0.00	0.00	0.00
3,900.0	5.81	13.12	3,881.7	355.1	82.8	361.7	0.00	0.00	0.00
4,000.0	5.81	13.12	3,981.2	364.9	85.1	371.8	0.00	0.00	0.00
4,100.0	5.81	13.12	4,080.6	374.8	87.4	381.8	0.00	0.00	0.00
4,200.0	5.81	13.12	4,180.1	384.6	89.7	391.8	0.00	0.00	0.00
4,300.0	5.81	13.12	4,279.6	394.5	92.0	401.9	0.00	0.00	0.00
4,400.0	5.81	13.12	4,379.1	404.3	94.2	411.9	0.00	0.00	0.00
4,500.0	5.81	13.12	4,478.6	414.2	96.5	422.0	0.00	0.00	0.00
4,600.0	5.81	13.12	4,578.1	424.0	98.8	432.0	0.00	0.00	0.00
4,700.0	5.81	13.12	4,677.6	433.9	101.1	442.0	0.00	0.00	0.00

Database:	EDM 5000.1 Single User Db	Local Co-ordinate Reference:	Well BJU M33 FED 14B-33 496 - Slot BJU M33 FED 14B-33 496
Company:	Caerus Oil & Gas	TVD Reference:	RKB @ 8431.0usft (H&P #329)
Project:	Garfield County, CO	MD Reference:	RKB @ 8431.0usft (H&P #329)
Site:	NPM M33 496 Pad	North Reference:	True
Well:	BJU M33 FED 14B-33 496	Survey Calculation Method:	Minimum Curvature
Wellbore:	Wellbore #1		
Design:	Design #1		

Planned Survey

Measured Depth (usft)	Inclination (°)	Azimuth (°)	Vertical Depth (usft)	+N/-S (usft)	+E/-W (usft)	Vertical Section (usft)	Dogleg Rate (°/100usft)	Build Rate (°/100usft)	Turn Rate (°/100usft)
4,800.0	5.81	13.12	4,777.1	443.8	103.4	452.1	0.00	0.00	0.00
4,900.0	5.81	13.12	4,876.5	453.6	105.7	462.1	0.00	0.00	0.00
5,000.0	5.81	13.12	4,976.0	463.5	108.0	472.1	0.00	0.00	0.00
5,100.0	5.81	13.12	5,075.5	473.3	110.3	482.2	0.00	0.00	0.00
5,200.0	5.81	13.12	5,175.0	483.2	112.6	492.2	0.00	0.00	0.00
5,300.0	5.81	13.12	5,274.5	493.0	114.9	502.3	0.00	0.00	0.00
5,400.0	5.81	13.12	5,374.0	502.9	117.2	512.3	0.00	0.00	0.00
Wasatch G									
5,420.1	5.81	13.12	5,394.0	504.9	117.7	514.3	0.00	0.00	0.00
5,500.0	5.81	13.12	5,473.5	512.7	119.5	522.3	0.00	0.00	0.00
5,600.0	5.81	13.12	5,572.9	522.6	121.8	532.4	0.00	0.00	0.00
Fort Union									
5,661.4	5.81	13.12	5,634.0	528.6	123.2	538.5	0.00	0.00	0.00
5,700.0	5.81	13.12	5,672.4	532.4	124.1	542.4	0.00	0.00	0.00
5,800.0	5.81	13.12	5,771.9	542.3	126.4	552.5	0.00	0.00	0.00
5,900.0	5.81	13.12	5,871.4	552.1	128.7	562.5	0.00	0.00	0.00
6,000.0	5.81	13.12	5,970.9	562.0	131.0	572.5	0.00	0.00	0.00
6,100.0	5.81	13.12	6,070.4	571.9	133.3	582.6	0.00	0.00	0.00
6,200.0	5.81	13.12	6,169.9	581.7	135.6	592.6	0.00	0.00	0.00
6,300.0	5.81	13.12	6,269.4	591.6	137.9	602.6	0.00	0.00	0.00
6,400.0	5.81	13.12	6,368.8	601.4	140.2	612.7	0.00	0.00	0.00
6,500.0	5.81	13.12	6,468.3	611.3	142.5	622.7	0.00	0.00	0.00
6,600.0	5.81	13.12	6,567.8	621.1	144.8	632.8	0.00	0.00	0.00
6,700.0	5.81	13.12	6,667.3	631.0	147.1	642.8	0.00	0.00	0.00
6,800.0	5.81	13.12	6,766.8	640.8	149.4	652.8	0.00	0.00	0.00
6,900.0	5.81	13.12	6,866.3	650.7	151.7	662.9	0.00	0.00	0.00
7,000.0	5.81	13.12	6,965.8	660.5	154.0	672.9	0.00	0.00	0.00
7,100.0	5.81	13.12	7,065.3	670.4	156.3	683.0	0.00	0.00	0.00
7,200.0	5.81	13.12	7,164.7	680.2	158.6	693.0	0.00	0.00	0.00
Drop 3° /100'									
7,307.6	5.81	13.12	7,271.8	690.8	161.0	703.8	0.00	0.00	0.00
7,400.0	3.03	13.12	7,363.9	697.8	162.6	710.9	3.00	-3.00	0.00
EOD @ Vertical / Build 1.5° / 100' - Ohio Creek									
7,501.1	0.00	0.00	7,465.0	700.4	163.3	713.5	3.00	-3.00	0.00
EOB @ 1.58° Inc. / 250.17° Azm									
7,606.2	1.58	250.14	7,570.0	699.9	161.9	712.9	1.50	1.50	0.00
7,700.0	1.58	250.14	7,663.8	699.0	159.5	711.8	0.00	0.00	0.00
Williams Fork - TOG									
7,756.2	1.58	250.14	7,720.0	698.5	158.0	711.1	0.00	0.00	0.00
7,800.0	1.58	250.14	7,763.8	698.1	156.9	710.6	0.00	0.00	0.00
7,900.0	1.58	250.14	7,863.7	697.2	154.3	709.4	0.00	0.00	0.00
8,000.0	1.58	250.14	7,963.7	696.2	151.7	708.2	0.00	0.00	0.00
8,100.0	1.58	250.14	8,063.7	695.3	149.1	707.0	0.00	0.00	0.00
8,200.0	1.58	250.14	8,163.6	694.4	146.5	705.8	0.00	0.00	0.00
8,300.0	1.58	250.14	8,263.6	693.4	144.0	704.6	0.00	0.00	0.00
8,400.0	1.58	250.14	8,363.5	692.5	141.4	703.4	0.00	0.00	0.00
8,500.0	1.58	250.14	8,463.5	691.6	138.8	702.2	0.00	0.00	0.00
8,600.0	1.58	250.14	8,563.5	690.6	136.2	701.0	0.00	0.00	0.00
8,700.0	1.58	250.14	8,663.4	689.7	133.6	699.8	0.00	0.00	0.00
8,800.0	1.58	250.14	8,763.4	688.8	131.0	698.6	0.00	0.00	0.00
8,900.0	1.58	250.14	8,863.4	687.8	128.4	697.4	0.00	0.00	0.00
9,000.0	1.58	250.14	8,963.3	686.9	125.9	696.2	0.00	0.00	0.00

Database:	EDM 5000.1 Single User Db	Local Co-ordinate Reference:	Well BJU M33 FED 14B-33 496 - Slot BJU M33 FED 14B-33 496
Company:	Caerus Oil & Gas	TVD Reference:	RKB @ 8431.0usft (H&P #329)
Project:	Garfield County, CO	MD Reference:	RKB @ 8431.0usft (H&P #329)
Site:	NPM M33 496 Pad	North Reference:	True
Well:	BJU M33 FED 14B-33 496	Survey Calculation Method:	Minimum Curvature
Wellbore:	Wellbore #1		
Design:	Design #1		

Planned Survey										
Measured Depth (usft)	Inclination (°)	Azimuth (°)	Vertical Depth (usft)	+N/-S (usft)	+E/-W (usft)	Vertical Section (usft)	Dogleg Rate (°/100usft)	Build Rate (°/100usft)	Turn Rate (°/100usft)	
9,100.0	1.58	250.14	9,063.3	685.9	123.3	695.0	0.00	0.00	0.00	
9,200.0	1.58	250.14	9,163.2	685.0	120.7	693.8	0.00	0.00	0.00	
9,300.0	1.58	250.14	9,263.2	684.1	118.1	692.6	0.00	0.00	0.00	
9,400.0	1.58	250.14	9,363.2	683.1	115.5	691.4	0.00	0.00	0.00	
9,500.0	1.58	250.14	9,463.1	682.2	112.9	690.2	0.00	0.00	0.00	
9,600.0	1.58	250.14	9,563.1	681.3	110.3	689.0	0.00	0.00	0.00	
9,700.0	1.58	250.14	9,663.1	680.3	107.8	687.8	0.00	0.00	0.00	
9,800.0	1.58	250.14	9,763.0	679.4	105.2	686.6	0.00	0.00	0.00	
9,900.0	1.58	250.14	9,863.0	678.5	102.6	685.4	0.00	0.00	0.00	
10,000.0	1.58	250.14	9,962.9	677.5	100.0	684.3	0.00	0.00	0.00	
10,100.0	1.58	250.14	10,062.9	676.6	97.4	683.1	0.00	0.00	0.00	
10,200.0	1.58	250.14	10,162.9	675.7	94.8	681.9	0.00	0.00	0.00	
10,300.0	1.58	250.14	10,262.8	674.7	92.2	680.7	0.00	0.00	0.00	
Cameo										
10,359.2	1.58	250.14	10,322.0	674.2	90.7	680.0	0.00	0.00	0.00	
10,400.0	1.58	250.14	10,362.8	673.8	89.7	679.5	0.00	0.00	0.00	
10,500.0	1.58	250.14	10,462.7	672.9	87.1	678.3	0.00	0.00	0.00	
10,600.0	1.58	250.14	10,562.7	671.9	84.5	677.1	0.00	0.00	0.00	
10,700.0	1.58	250.14	10,662.7	671.0	81.9	675.9	0.00	0.00	0.00	
10,800.0	1.58	250.14	10,762.6	670.1	79.3	674.7	0.00	0.00	0.00	
10,900.0	1.58	250.14	10,862.6	669.1	76.7	673.5	0.00	0.00	0.00	
Rollins										
10,987.4	1.58	250.14	10,950.0	668.3	74.5	672.4	0.00	0.00	0.00	
11,000.0	1.58	250.14	10,962.6	668.2	74.1	672.3	0.00	0.00	0.00	
11,100.0	1.58	250.14	11,062.5	667.3	71.6	671.1	0.00	0.00	0.00	
TD @ 11187.5' MD / 11150.0' TVD										
11,187.5	1.58	250.14	11,150.0	666.5	69.3	670.0	0.00	0.00	0.00	

Design Targets										
Target Name										
- hit/miss target	Dip Angle (°)	Dip Dir. (°)	TVD (usft)	+N/-S (usft)	+E/-W (usft)	Northing (usft)	Easting (usft)	Latitude		Longitude
- Shape										
OHCR - BJU M33 FEI	0.00	0.00	7,465.0	700.4	163.3	14,413,137.58	2,435,004.85	39.655600		-108.177121
- plan hits target center										
- Point										
PBHL - BJU M33 FEC	0.00	0.00	11,150.0	666.5	69.3	14,413,100.70	2,434,912.00	39.655507		-108.177455
- plan hits target center										
- Ellipse (radii L100.0 W50.0 on 250.00 azi)										

Database:	EDM 5000.1 Single User Db	Local Co-ordinate Reference:	Well BJU M33 FED 14B-33 496 - Slot BJU M33 FED 14B-33 496
Company:	Caerus Oil & Gas	TVD Reference:	RKB @ 8431.0usft (H&P #329)
Project:	Garfield County, CO	MD Reference:	RKB @ 8431.0usft (H&P #329)
Site:	NPM M33 496 Pad	North Reference:	True
Well:	BJU M33 FED 14B-33 496	Survey Calculation Method:	Minimum Curvature
Wellbore:	Wellbore #1		
Design:	Design #1		

Formations

Measured Depth (usft)	Vertical Depth (usft)	Name	Lithology	Dip (°)	Dip Direction (°)
2,404.7	2,394.0	Wasatch			
5,420.1	5,394.0	Wasatch G			
5,661.4	5,634.0	Fort Union			
7,501.1	7,465.0	Ohio Creek			
7,756.2	7,720.0	Williams Fork			
7,756.2	7,720.0	TOG			
10,359.2	10,322.0	Cameo			
10,987.4	10,950.0	Rollins			

Plan Annotations

Measured Depth (usft)	Vertical Depth (usft)	Local Coordinates		Comment
		+N/-S (usft)	+E/-W (usft)	
200.0	200.0	0.0	0.0	Build 3° / 100'
393.6	393.2	9.5	2.2	EOB @ 5.81° Inc. / 13.15° Azm
7,307.6	7,271.8	690.8	161.0	Drop 3° / 100'
7,501.1	7,465.0	700.4	163.3	EOD @ Vertical / Build 1.5° / 100'
7,606.2	7,570.0	699.9	161.9	EOB @ 1.58° Inc. / 250.17° Azm
11,187.5	11,150.0	666.5	69.3	TD @ 11187.5' MD / 11150.0' TVD