

T4S, R96W, 6th P.M.

LEGEND:

- = PROPOSED WELLHEAD.
- ◆ = TOP OF GAS INTERVAL.
- = TARGET BOTTOM HOLE.
- ▲ = SECTION CORNERS LOCATED. (NAD 83)
- △ = SECTION CORNERS RE-ESTABLISHED. (Not Set on Ground.) (NAD 83)

1970 Brass Cap,
0.2' High, Mound
of Stones
Lat: 39.666053°
Long: 108.182875°

1970 Brass Cap,
0.7' High, Mound
of Stones
Lat: 39.666058°
Long: 108.173508°

1953 Brass Cap,
0.9' High, Steel
Post
Lat: 39.666061°
Long: 108.164131°

S89°50'45"W - 2638.39' (Meas.)

S89°50'46"W - 2641.15' (Meas.)

BASIS OF BEARINGS
N00°14'26"W - 2742.34' (Meas.)

N00°07'36"W - 2639.15' (Meas.)

1970 Brass Cap,
0.4' High, Steel
Post
Lat: 39.658528°
Long: 108.272972°

1953 Brass Cap,
0.3' High, Mound
of Stones, Steel
Post
Lat: 39.658819°
Long: 108.164128°

1917 Brass Cap
Lat: 39.651256°
Long: 108.183561°

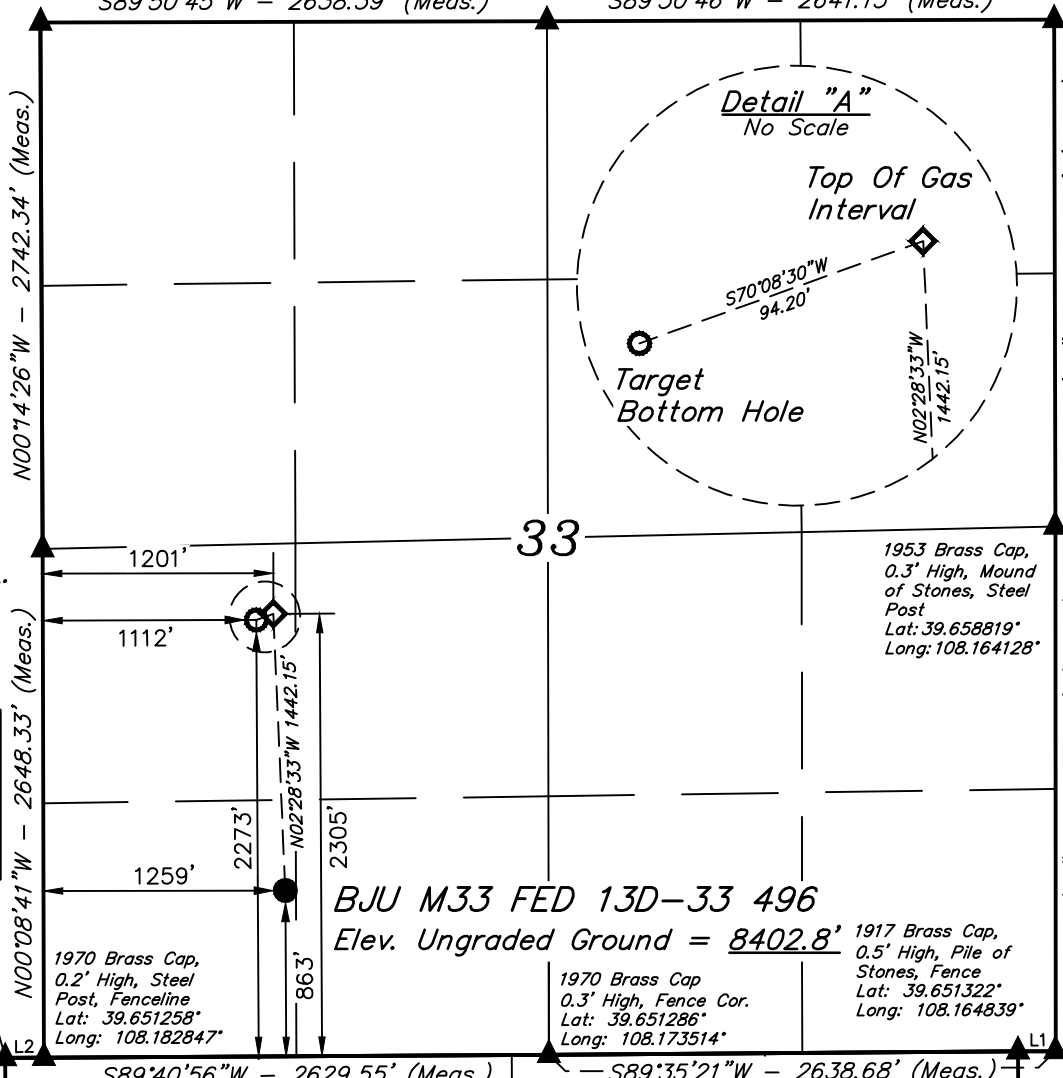
1970 Brass Cap,
0.2' High, Steel
Post, Fenceline
Lat: 39.651258°
Long: 108.182847°

1970 Brass Cap
0.3' High, Fence Cor.
Lat: 39.651286°
Long: 108.173514°

1917 Brass Cap,
0.5' High, Pile of
Stones, Fence
Lat: 39.651322°
Long: 108.164839°

SE Cor. Sec. 33
1953 Brass Cap
0.2' High, Pile
of Stones, Fence
Lat: 39.651322°
Long: 108.164147°

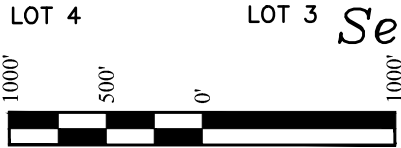
LINE TABLE		
LINE	DIRECTION	LENGTH
L1	N89°53'22"E	195.03'
L2	S89°26'45"W	200.90'



BJU M33 FED 13D-33 496
Elev. Ungraded Ground = 8402.8'

PDOP = 1.4

NAD 83 (SURFACE LOCATION)	
LATITUDE = 39°39'13.11" (39.653641)	
LONGITUDE = 108°10'42.17" (108.178379)	
NAD 27 (SURFACE LOCATION)	
LATITUDE = 39°39'13.20" (39.653665)	
LONGITUDE = 108°10'39.87" (108.177742)	
UTM COORD.:NAD 27/ZONE 12	
N: 14412427.57 E: 2434852.18	
NAD 83 (TOP OF GAS INTERVAL)	NAD 83 (TARGET BOTTOM HOLE)
LATITUDE = 39°39'27.34" (39.657595)	LATITUDE = 39°39'27.03" (39.657508)
LONGITUDE = 108°10'42.92" (108.178590)	LONGITUDE = 108°10'44.06" (108.178905)
NAD 27 (TOP OF GAS INTERVAL)	NAD 27 (TARGET BOTTOM HOLE)
LATITUDE = 39°39'27.43" (39.657620)	LATITUDE = 39°39'27.12" (39.657532)
LONGITUDE = 108°10'40.63" (108.177953)	LONGITUDE = 108°10'41.76" (108.178268)
UTM COORD.:NAD 27/ZONE 12	UTM COORD.:NAD 27/ZONE 12
N: 14413865.78 E: 2434747.49	N: 14413831.19 E: 2434659.88



CERTIFICATE

THIS IS TO CERTIFY THAT THE ABOVE PLAT WAS PREPARED AND THE LOCATION AS SHOWN WAS STAKED ON THE GROUND FROM FIELD NOTES OF ACTUAL SURVEYS MADE BY ME OR UNDER MY SUPERVISION AND THAT THE SAME ARE TRUE AND CORRECT TO THE BEST OF MY KNOWLEDGE AND BELIEF.

Handwritten Signature: Harold Marshall
REGISTERED LAND SURVEYOR
REGISTRATION NO. 19180
STATE OF COLORADO 01-03-20



BASIS OF BEARINGS
BEARINGS ARE A BASED ASSUMPTION THAT THE WEST LINE OF THE NORTHWEST 1/4 OF SECTION 33 BEARS N00°14'26"W. MONUMENTS DESCRIBED HEREON.

BASIS OF ELEVATION
BENCH MARK (H79) LOCATED IN THE NE 1/4 OF SECTION 35, T4S, R98W, 6th P.M., TAKEN FROM THE BULL FORK, QUADRANGLE, COLORADO, 7.5 MINUTE SERIES (TOPOGRAPHIC MAP) PUBLISHED BY THE UNITED STATES DEPARTMENT OF THE INTERIOR, GEOLOGICAL SURVEY. SAID ELEVATION IS MARKED AS BEING 8535 FEET.



UELS, LLC
Corporate Office * 85 South 200 East
Vernal, UT 84078 * (435) 789-1017



Caerus Oil & Gas LLC

BJU M33 FED 13D-33 496
SW 1/4 SW 1/4, SECTION 33, T4S, R96W, 6th P.M.
GARFIELD COUNTY, COLORADO

SURVEYED BY	DAYTON SLAUGH	09-16-19	SCALE
DRAWN BY	M.D.	01-03-20	1" = 1000'

WELL LOCATION PLAT