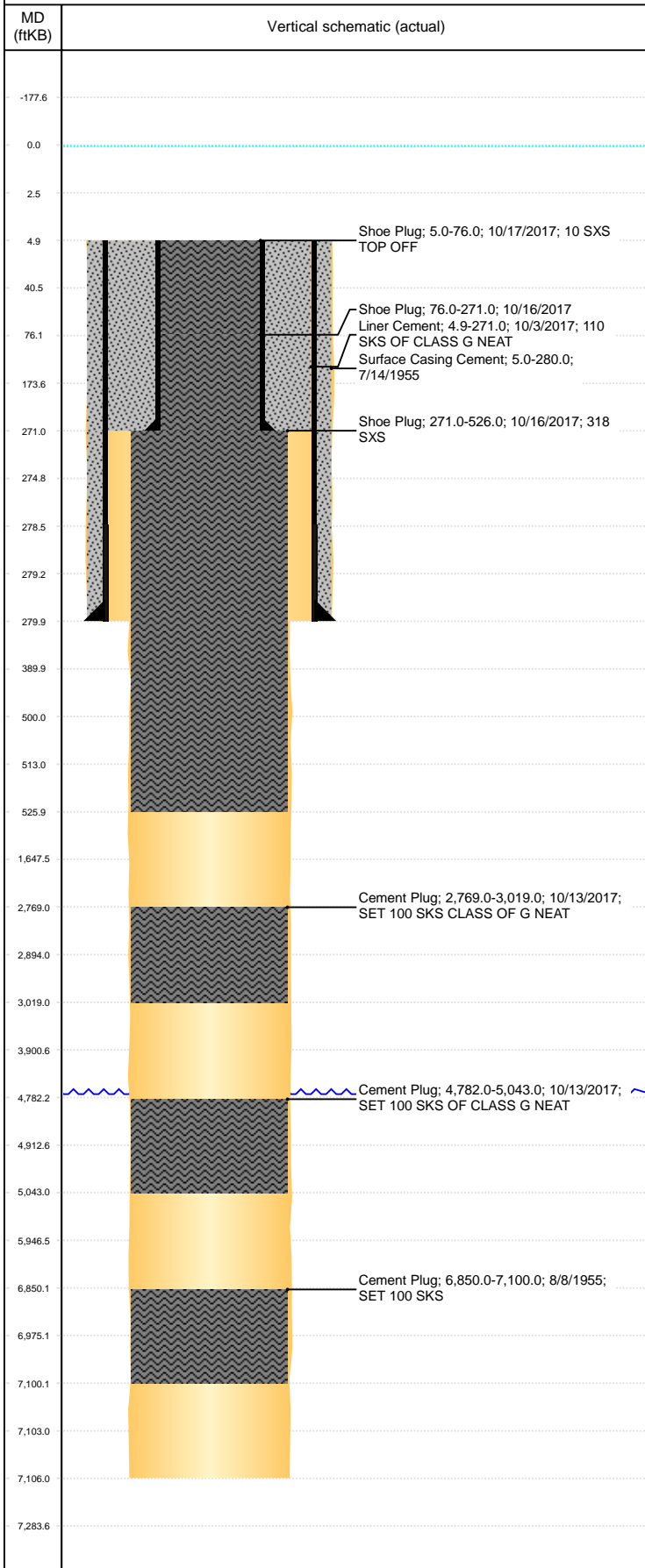


**Well Name: BROWN & MANNING 1**

VERTICAL, ORIGINAL HOLE, 1/21/2020 10:12:06 AM



Well Header									
API 05-123-05188			Business Unit DJ BASIN			District 15		Well Config VERTICAL	
KB - GL / MSL (ft...)		Spud Date 7/14/1955		P & A Date 10/17/2017		Well Production Status DA			SoRT Yes
Comment DATA/REPORTS ARE VERY SPARSE FOR THIS WELL.									
Surface Location (Congressional)									
Qtr 3 NE	Qtr 4 NW	Section 17	Twnshp 5	Twnsh... N	Range 62	Rng E/... W	Actual Latitude (°) 40.40450600	Actual Longitude (°) -104.34922800	
Wellbore Sections									
Section Des			Size (in)			Act Top, MD (ftKB)		Act Btm, MD (ftKB)	
SURFACE			12 1/4			5		280	
PRODUCTION			7 7/8			280		7,106	
Casing Strings									
Csg Des			Run Date	OD (in)	Wt/Len (lb/ft)	Grade	Top, MD (ftKB)	MD (ftKB)	
Liner			10/3/2017	5 1/2	15.50	J-55	5.0	271.0	
Surface			7/14/1955	10 3/4	32.75		5.0	280.0	
Cement									
Des				Start Date		Top (ftKB)		Btm (ftKB)	
Surface Casing Cement				7/14/1955		5.0		280.0	
Cement Plug				8/8/1955		6,850.0		7,100.0	
Cement Plug				8/8/1955		0.0		0.0	
Cement Plug				8/8/1955		0.0		0.0	
Liner Cement				10/3/2017		4.9		271.0	
Cement Plug				10/13/2017		4,782.0		5,043.0	
Cement Plug				10/13/2017		2,769.0		3,019.0	
Shoe Plug				10/16/2017		271.0		526.0	
Shoe Plug				10/16/2017		76.0		271.0	
Shoe Plug				10/17/2017		5.0		76.0	
Zone Statuses									
Zone Name	Status Date	Status	Fluid Type	Job			Prod Method		
Other In Hole									
Run Date	Des					OD (in)	Top (ftKB)	Btm (ftKB)	
Logs									
Date	Type					Top, MD (ftKB)		Btm, MD (ftKB)	