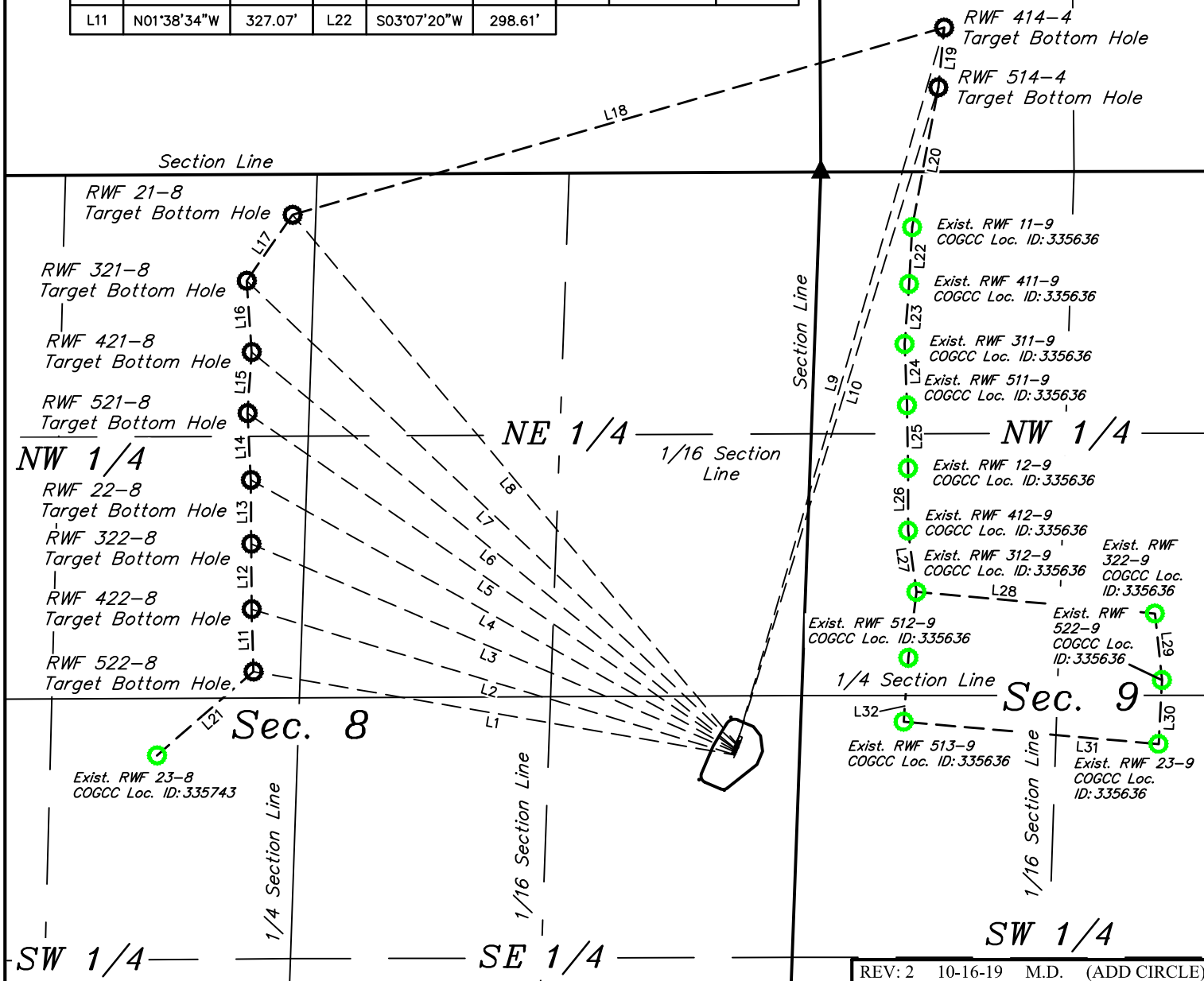







LINE TABLE			LINE TABLE			LINE TABLE		
LINE	DIRECTION	LENGTH	LINE	DIRECTION	LENGTH	LINE	DIRECTION	LENGTH
L1	N80°11'22"W	2555.92'	L12	N00°20'38"W	342.80'	L23	S04°12'19"W	315.16'
L2	N73°14'22"W	2630.46'	L13	N00°18'49"W	335.00'	L24	S02°10'52"E	321.17'
L3	N66°42'42"W	2750.71'	L14	N02°55'12"W	350.58'	L25	S00°54'23"E	329.96'
L4	N60°47'05"W	2900.29'	L15	N03°55'36"E	320.85'	L26	S00°04'06"E	327.68'
L5	N55°25'37"W	3099.48'	L16	N04°02'01"W	374.18'	L27	S07°48'42"E	323.85'
L6	N50°38'29"W	3284.27'	L17	N34°48'15"E	421.51'	L28	S84°48'36"E	1255.04'
L7	N46°32'01"W	3534.43'	L18	N73°57'46"E	3551.86'	L29	S06°00'24"E	350.80'
L8	N39°59'58"W	3630.86'	L19	S05°36'29"W	314.49'	L30	S03°00'49"W	335.36'
L9	N16°08'40"E	3905.90'	L20	S10°35'05"W	745.50'	L31	N85°00'06"W	1341.05'
L10	N17°02'55"E	3589.74'	L21	S48°59'26"W	669.61'	L32	N04°16'05"E	335.70'
L11	N01°38'34"W	327.07'	L22	S03°07'20"W	298.61'			

SW 1/4 —
Sec. 4



LEGEND:

-  = TARGET BOTTOM HOLE.
 = SECTION CORNERS
 LOCATED. (NAD 83)
 = EXISTING BOTTOM HOLE.

TEP Rocky Mountain LLC

RWF 12-9 PAD
NE 1/4 SE 1/4, SECTION 8, T6S, R94W, 6th P.M.
GARFIELD COUNTY, COLORADO



UELS, LLC
Corporate Office * 85 South 200 East
Vernal, UT 84078 * (435) 789-1017

SURVEYED BY	BART HUNTING, D.S.	07-24-19	SCALE
DRAWN BY	T.L.L.	08-20-19	1" = 800'
MULTI-WELL PLAN			FIGURE #6A