

PROCEED IN A NORTHERLY, THEN WESTERLY, THEN SOUTHWESTERLY, THEN SOUTHERLY DIRECTION FROM RIFLE, COLORADO ALONG COUNTY ROAD 13 APPROXIMATELY 1.9 MILES TO THE JUNCTION OF THIS ROAD AND U.S. HIGHWAY 6 W TO THE WEST; TURN RIGHT AND PROCEED IN A WESTERLY, THEN SOUTHWESTERLY DIRECTION APPROXIMATELY 2.6 MILES TO THE JUNCTION OF THIS ROAD AND U.S. HIGHWAY 6 E TO THE SOUTH; TURN LEFT AND PROCEED IN A SOUTHERLY DIRECTION APPROXIMATELY 0.2 MILES TO THE JUNCTION OF THIS ROAD AND I-70 FRONTAGE RD W TO THE SOUTHWESTERLY TURN RIGHT AND PROCEED IN A SOUTHWESTERLY DIRECTION APPROXIMATELY 3.7 MILES TO THE JUNCTION OF THIS ROAD AND COUNTY ROAD 246 TO THE NORTHWEST; TURN RIGHT AND PROCEED IN A NORTHWESTERLY DIRECTION APPROXIMATELY 0.1 MILES TO THE JUNCTION OF THIS ROAD AND FRONTAGE ROAD TO THE NORTHEAST; TURN RIGHT AND PROCEED IN A NORTHEASTERLY, THEN NORTHERLY, THEN WESTERLY DIRECTION APPROXIMATELY 1.9 MILES TO THE BEGINNING OF THE EXISTING ACCESS ROAD; TURN RIGHT AND PROCEED IN A NORTHERLY, THEN NORTHWESTERLY DIRECTION APPROXIMATELY 1.4 MILES TO THE EXISTING LOCATION.

TOTAL DISTANCE FROM RIFLE, COLORADO TO THE EXISTING WELL LOCATION IS APPROXIMATELY 11.8 MILES.

LEGEND:

 EXISTING LOCATION



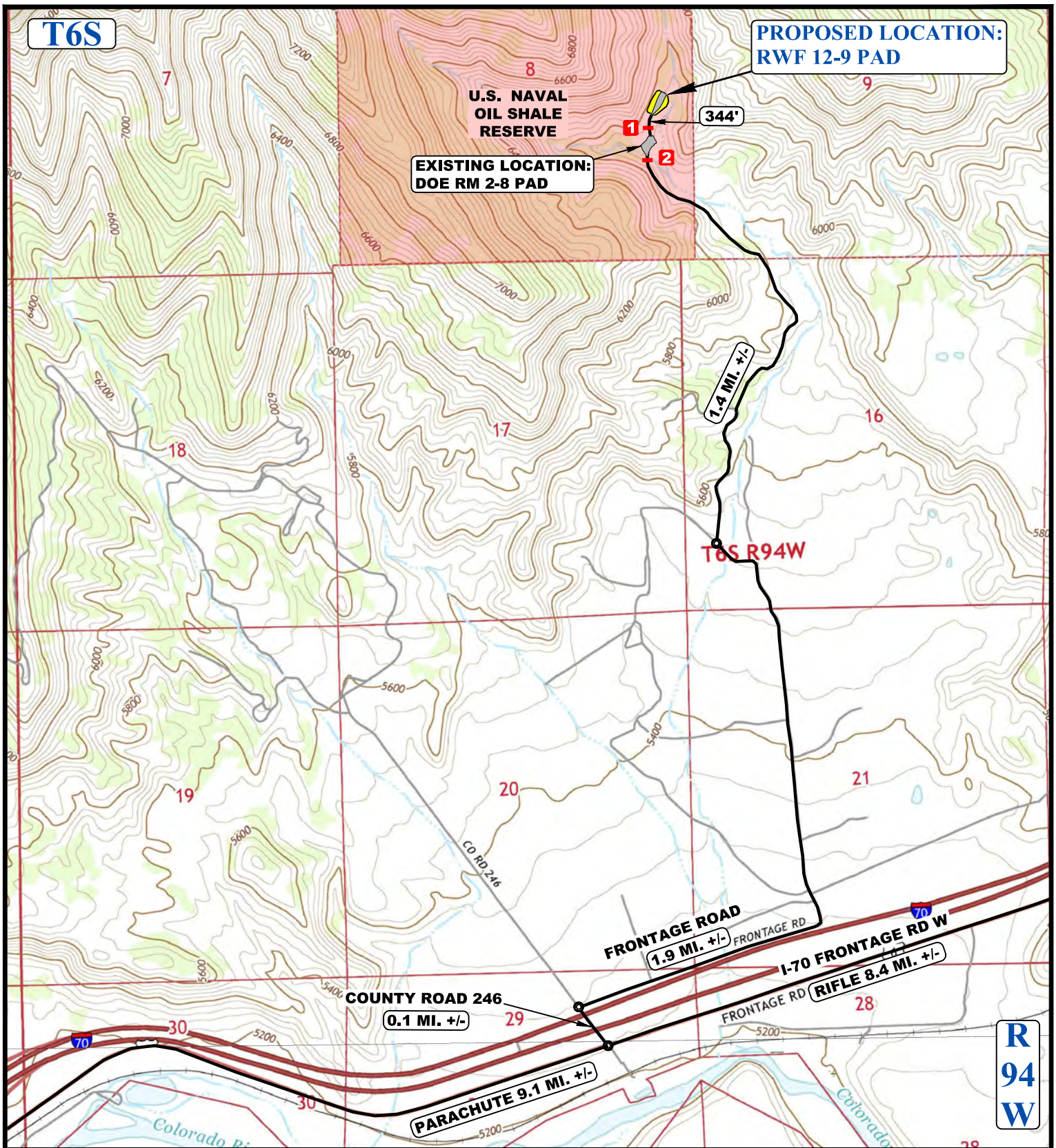
TEP Rocky Mountain LLC

RWF 12-9 PAD
NE 1/4 SE 1/4, SECTION 8, T6S, R94W, 6th P.M.
GARFIELD COUNTY, COLORADO

SURVEYED BY	BART HUNTING, B.H.	08-21-19	SCALE
DRAWN BY	A.A.	08-21-19	1 : 100,000
ACCESS ROAD MAP			PLAT #5A



UELS, LLC
Corporate Office * 85 South 200 East
Vernal, UT 84078 * (435) 789-1017



NOTE: PARCEL DATA SHOWN HAS BEEN OBTAINED FROM VARIOUS SOURCES AND SHOULD BE USED FOR MAPPING, GRAPHIC AND PLANNING PURPOSES ONLY. NO WARRANTY IS MADE BY UINTAH ENGINEERING AND LAND SURVEYING (UELS) FOR ACCURACY OF THE PARCEL DATA.

LEGEND:

- EXISTING ROAD
- 1 EXISTING 24" CULVERT
- 2 EXISTING 60" CULVERT



TEP Rocky Mountain LLC

RWF 12-9 PAD
NE 1/4 SE 1/4, SECTION 8, T6S, R94W, 6th P.M.
GARFIELD COUNTY, COLORADO

SURVEYED BY	BART HUNTING, B.H.	08-21-19	SCALE
DRAWN BY	A.A.	08-21-19	1 : 24,000
ACCESS ROAD MAP			PLAT #5B



UELS, LLC
Corporate Office * 85 South 200 East
Vernal, UT 84078 * (435) 789-1017