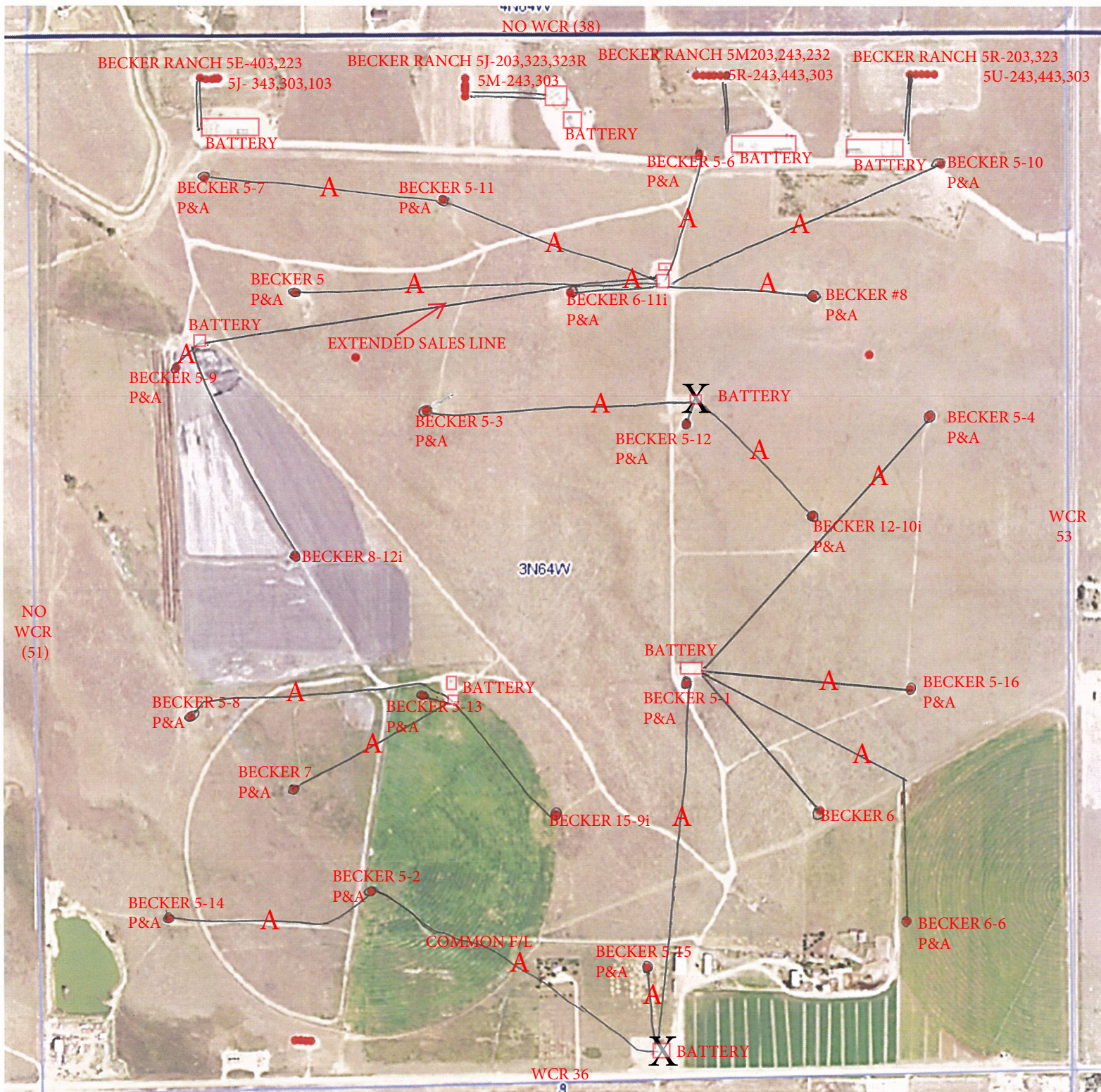


4XN-63W-5



BECKER 5-5 P&A 4/15 ABANDONED F/L
 BECKER 5-13 P&A 6/15 ABANDONED F/L
 BECKER 5-12 P&A 6/15 ABANDONED F/L
 BECKER 5-10 P&A 6/15 ABANDONED F/L
 BECKER 6-11 P&A 6/15 ABANDONED F/L
 BECKER 5-7 P&A 7/15 ABANDONED F/L
 BECKER 5-8 P&A 7/15 ABANDONED F/L
 BECKER 5-16 P&A 7/15 ABANDONED F/L
 BECKER #7 P&A 7/15 ABANDONED F/L
 BECKER #5 P&A 7/15 ABANDONED F/L
 BECKER 12-10i P&A 7/15 ABANDONED F/L

BECKER 5-1 P&A 7/15 ABANDONED F/L
 BECKER 5-2 P&A 7/15 ABANDONED F/L
 BECKER 5-15 P&A 7/15 ABANDONED F/L
 BECKER 5-14 P&A 7/15 ABANDONED F/L
 BECKER 5-6 P&A 7/15 ABANDONED F/L
 BECKER 5-4 P&A 7/15 ABANDONED F/L
 BECKER 5-9 P&A 7/15 ABANDONED F/L
 BECKER 8 P&A 10/18 ABANDONED F/L
 BECKER 6-11i P&A 10/18 ABANDONED F/L
 BECKER RANCH 5J-103 P&A 7/15 WHILE DRILLING
 BECKER RANCH 5J-323 P&A 7/15 WHILE DRILLING