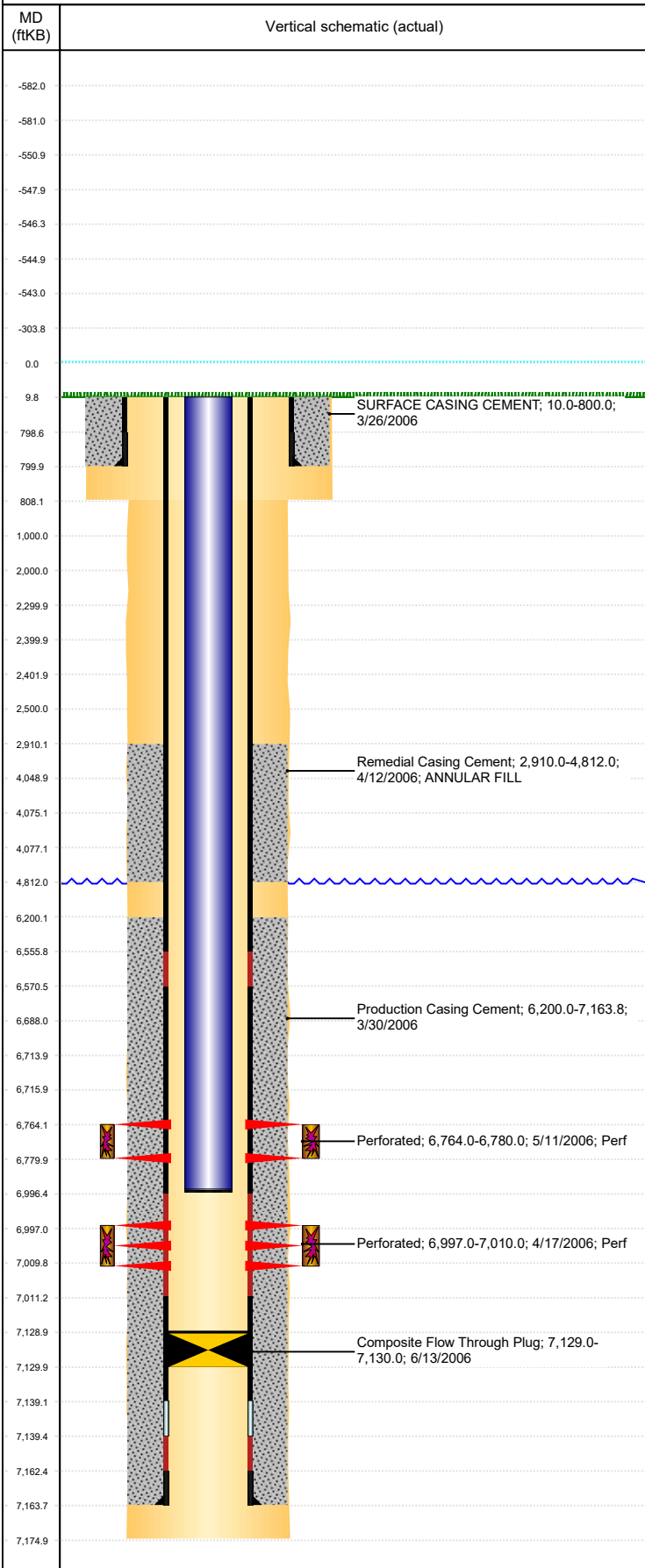


Well Name: GUTTERSEN D33-15

VERTICAL, ORIGINAL HOLE, 1/9/2020 11:08:53 AM



Well Header									
API 05-123-22902		Business Unit DJ BASIN		District 15		Well Config VERTICAL			
KB - GL / MSL (ft... 10.00		Spud Date 3/25/2006		P & A Date		Well Production Status PR		SoRT No	
Comment 6/13/06- D/O & PUSH CFP TO 7129; STILL DOWNHOLE?? FILE HAS TEST INFO FOR 2009 CODELL REFRAC BUT NO INFO FOR JOB BEING DONE.									
Surface Location (Congressional)									
Qtr 3 SW	Qtr 4 SE	Section 33	Twonshp 3	Twonsh... N	Range 64	Rng E... W	Actual Latitude (°) 40.17668519	Actual Longitude (°) -104.55404417	
Wellbore Sections									
Section Des		Size (in)		Act Top, MD (ftKB)		Act Btm, MD (ftKB)			
SURFACE		12 1/4		10		808			
PRODUCTION		7 7/8		808		7,175			
Casing Strings									
Csg Des		Run Date		OD (in)		Wt/Len (lb/ft)		Grade	
Surface		3/26/2006		8 5/8		24.00		J-55	
Production		3/29/2006		4 1/2		11.60		M-80	
Cement									
Des		Start Date		Top (ftKB)		Btm (ftKB)			
SURFACE CASING CEMENT		3/26/2006		10.0		800.0			
Production Casing Cement		3/30/2006		6,200.0		7,163.8			
Remedial Casing Cement		4/12/2006		2,910.0		4,812.0			
Zone Statuses									
Zone Name		Status Date		Status		Fluid Type		Job	
CODELL		5/15/2006		PR				DRILLING/COMPLETION - ORIGINAL, 3/25/2006...	
NIOBRARA		5/15/2006		PR				DRILLING/COMPLETION - ORIGINAL, 3/25/2006...	
Perforation Data									
Linked Zone		Bnch/Stg		Entered Shot Total		Top (ftKB)		Btm (ftKB)	
NIOBRARA, ORIGINAL HOLE				96		6,764.00		6,780.00	
CODELL, ORIGINAL HOLE				48		6,997.00		7,010.00	
Stimulation Intervals									
Zone		Start Date		Top (ftKB)		Btm (ftKB)			
NIOBRARA, ORIGINAL HOLE		5/11/2006		6,764.0		6,780.0			
CODELL, ORIGINAL HOLE		5/11/2006		6,997.0		7,010.0			
Other In Hole									
Run Date		Des		OD (in)		Top (ftKB)		Btm (ftKB)	
6/13/2006		Composite Flow Through Plug		3.99		7,129.0		7,130.0	
Logs									
Date		Type		Top, MD (ftKB)		Btm, MD (ftKB)			
3/29/2006		COMPENSATED DENSITY		2,675.0		7,151.0			
3/29/2006		INDUCTION		780.0		7,171.0			
4/17/2006		CEMENT BOND		2,740.0		7,107.0			
Plug Back Total Depths									
Date		Type		Com		Depth (ftKB)			
4/17/2006		FILL		DEPTH LOGGER ON CBL		7,108.0			
6/13/2006		FILL		D/O CFP & PUSH TO PBTD W/ 220 JTS TO 7129. CIRCULATE...		7,129.0			