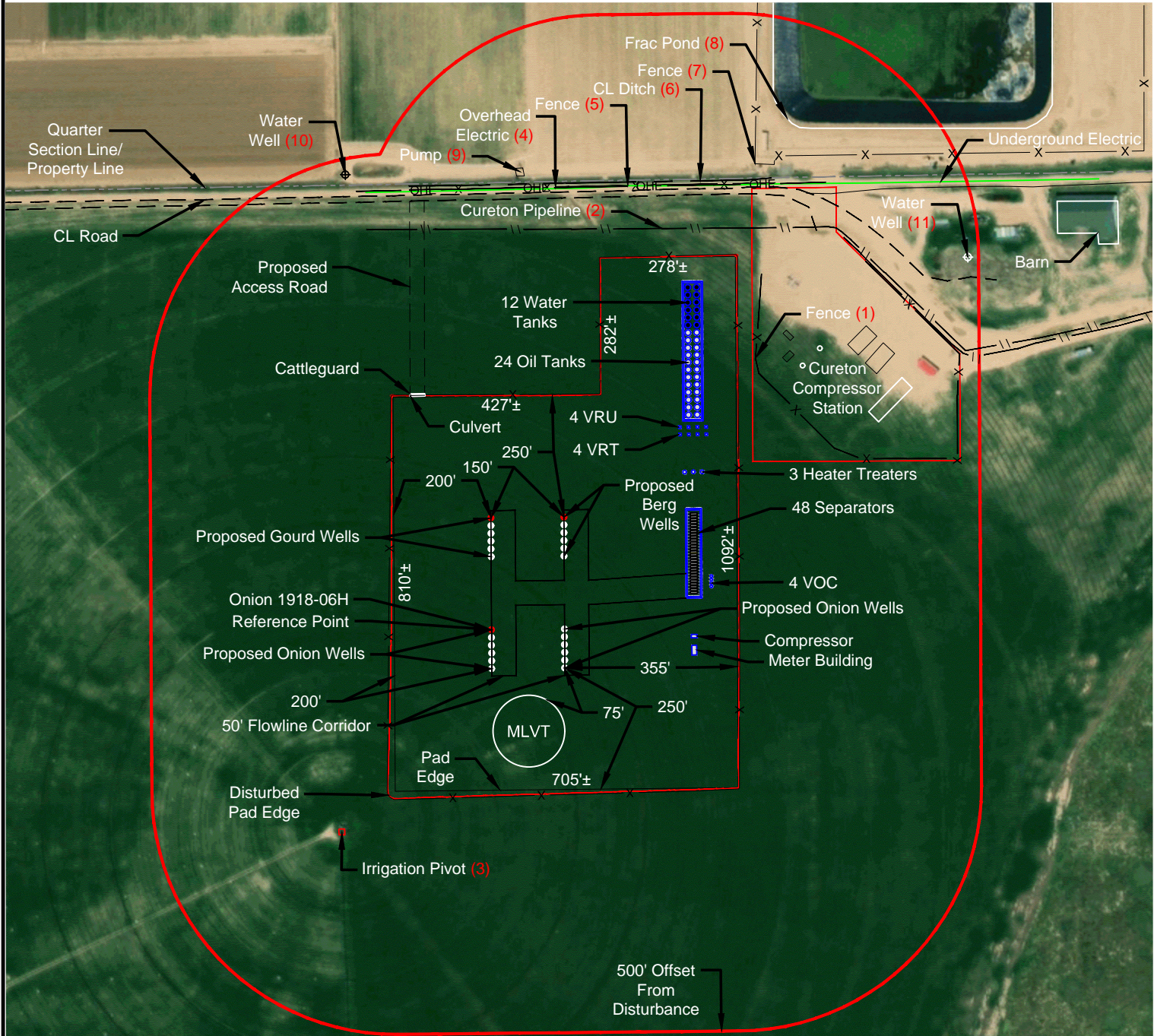


LOCATION DRAWING
NE 1/4 SW 1/4 SECTION 19
T1N R64W 6TH PM
WELD COUNTY, COLORADO



Pad Disturbance Distances: Within 500'

Feature	Bearing	Distance
(1) Fence Cureton Compressor Station	00° W	36'±
(2) Cureton Pipeline	00° N	55'±
(3) Irrigation Pivot Point	54° SW	122'±
(4) Overhead Electric	00° N	145'±
(5) Fence	00° N	147'±
(6) Centerline Ditch	00° N	154'±
(7) Fence	12° NE	192'±
(8) Frac Pond	23° NE	294'±
(9) Water Pump	43° NW	230'±
(10) Water Well	12° NW	464'±
(11) Water Well	90° NE	475'±

Reference Point Distances: Within 500'

Feature	Bearing	Distance
Nothing within 500' of Onion Reference Point		

REFERENCE POINT	
Latitude:	40.0341259
Longitude:	-104.5969771
Footage:	1665' FSL 1635' FWL
Ground Elevations:	5013'
PDOP:	2.0 Date: 04/04/2019
Instrument Operator:	Ross Carter

Cultural Distances:	From Closest Well	From Production Facility Equipment
Property Line	N 689'±	N 210'± (Tanks)
Public Road CR 6	S 1650'±	S 1674'± (Meter Building)
Building Unit	NW 1530'±	NW 1642'± (Tanks)
Building	NE 1171'±	NE 737'± (Tanks)
Railroad	5280'±	5280'±
Above Ground Utility	N 679'±	N 197'± (Tanks)
Water Well	NE 987'±	NE 548'± (Tanks)
School Facility	5280'±	5280'±
School Property Line	5280'±	5280'±
Child Care/Day Care	5280'±	5280'±
Outside Activity Area	5280'±	5280'±

Section 19
Section 30

LAND USE:
CROP LAND/NON-RANGELAND
NOXIOUS WEEDS: NO
PAD DISTURBANCE ACREAGE:
15.3 ± DRILLING OPERATIONS
12.9 ± POST-INTERIM RECLAMATION

VERDAD RESOURCES
GOURD, BERG AND
ONION PAD
JOB NO. 125258,125743,126537

MAPP	1/15/2020	REVISION:	
SHEET :	1 OF 1	INT	DATE
FILE :	F24_ONION_GOURD_BERG_LOCATION_DRAWING_REV4		

NOTE
This is not a land survey
nor land survey plat.



520 Stacy Court Ste B, Lafayette, CO 80026
303.666.0379 www.topographic.com