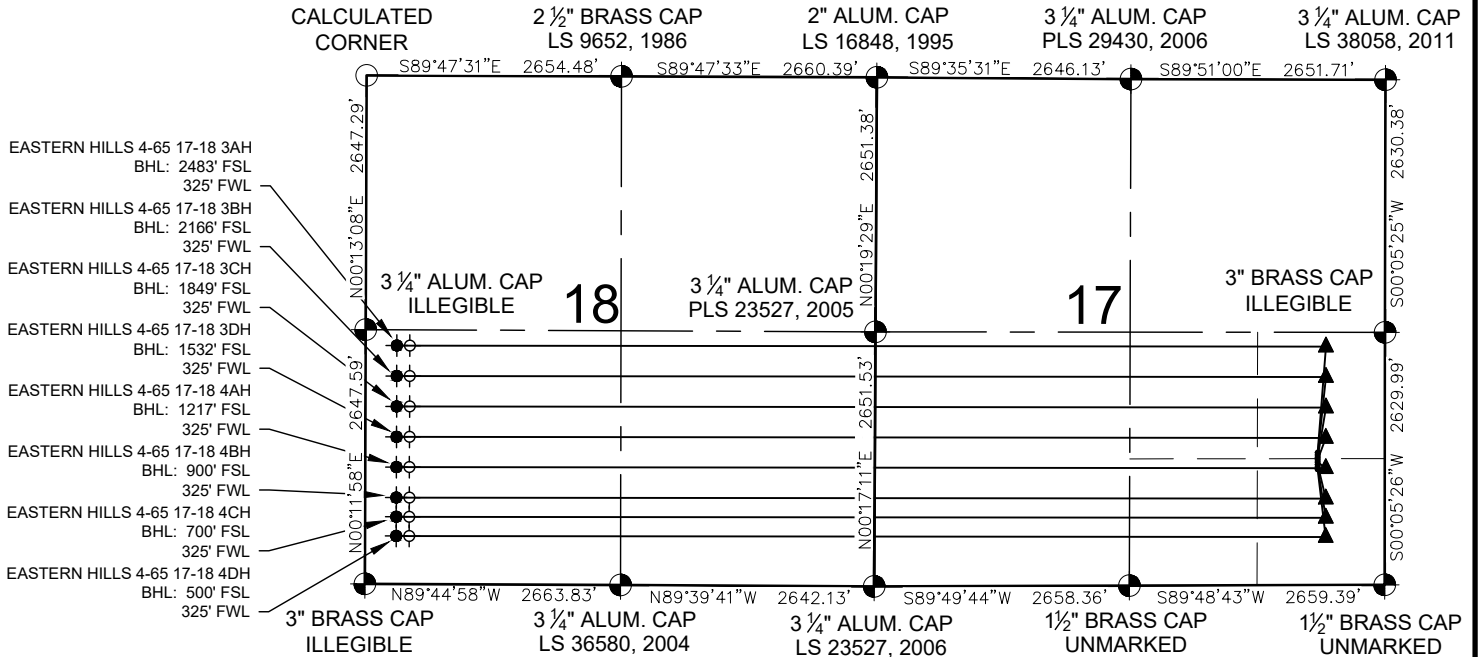


# EASTERN HILLS 4-65 17-18 3AH-3DH, 4AH-4DH PAD MULTI-WELL PLAN



## NOTES:

- EASTERN HILLS 4-65 17-18 3AH TO BE AT 1380' FSL & 700' FEL.  
BOTTOM HOLE AT 2483' FSL & 325' FWL, SEC. 18.
- EASTERN HILLS 4-65 17-18 3BH TO BE AT 1355' FSL & 700' FEL.  
BOTTOM HOLE AT 2166' FSL & 325' FWL, SEC. 18.
- EASTERN HILLS 4-65 17-18 3CH TO BE AT 1330' FSL & 700' FEL.  
BOTTOM HOLE AT 1849' FSL & 325' FWL, SEC. 18.
- EASTERN HILLS 4-65 17-18 3DH TO BE AT 1305' FSL & 700' FEL.  
BOTTOM HOLE AT 1532' FSL & 325' FWL, SEC. 18.
- EASTERN HILLS 4-65 17-18 4AH TO BE AT 1280' FSL & 700' FEL.  
BOTTOM HOLE AT 1217' FSL & 325' FWL, SEC. 18.
- EASTERN HILLS 4-65 17-18 4BH TO BE AT 1255' FSL & 700' FEL.  
BOTTOM HOLE AT 900' FSL & 325' FWL, SEC. 18.
- EASTERN HILLS 4-65 17-18 4CH TO BE AT 1230' FSL & 700' FEL.  
BOTTOM HOLE AT 700' FSL & 325' FWL, SEC. 18.
- EASTERN HILLS 4-65 17-18 4DH TO BE AT 1205' FSL & 700' FEL.  
BOTTOM HOLE AT 500' FSL & 325' FWL, SEC. 18.

## NOTES:

- THIS FIELD SURVEY CONFORMS TO THE MINIMUM STANDARDS SET BY THE C.O.G.C.C., RULE NO. 215
- ALL DISTANCES AND BEARINGS SHOWN HEREON ARE GROUND VALUES AS GPS MEASURED IN THE FIELD, WITH TIES TO WELLS MEASURED PERPENDICULAR TO LINES SHOWN HEREON. THIS LOW DISTORTION PROJECTION (LDP) IS BASED ON THE NORTH AMERICAN DATUM OF 1983, U.S. SURVEY FOOT WITH A LATITUDE ORIGIN OF 39.696714°N, A CENTRAL MERIDIAN LONGITUDE OF 104.659538°W, AND A SCALE FACTOR ON THE CENTRAL MERIDIAN OF 1.000269 (EXACT). THE LDP BASIS OF BEARINGS IS GEODETIC NORTH.
- FIELD VERIFICATION OF MONUMENTS COMPLETED WITHIN 1 YEAR OF FIELD DATE, UNLESS OTHERWISE NOTED.