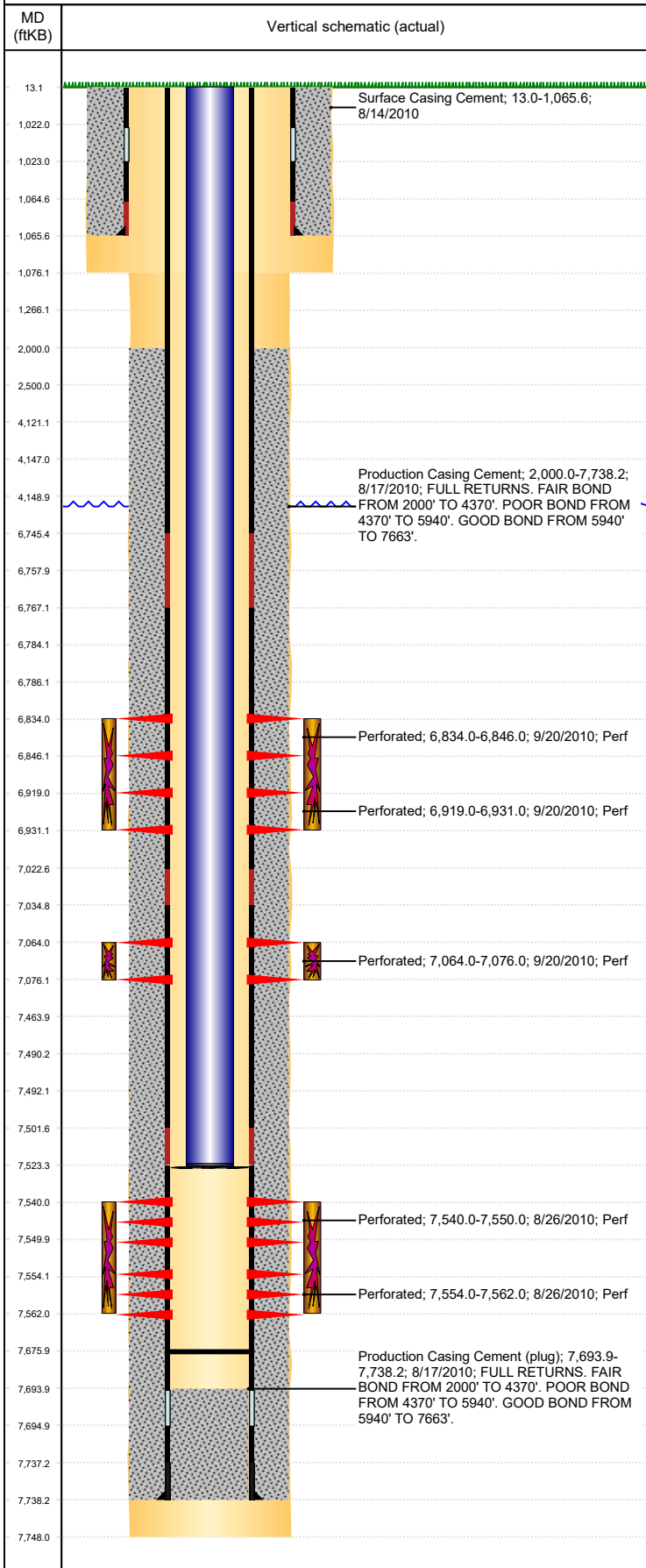


**Well Name: PIONEER Y08-03**

VERTICAL, ORIGINAL HOLE, 1/15/2020 10:41:07 AM



Well Header									
API 05-123-31013		Business Unit DJ BASIN			District 15		Well Config VERTICAL		
KB - GL / MSL (ft... 13.00		Spud Date 8/13/2010		P & A Date		Well Production Status PR			SoRT No
Comment									
Surface Location (Congressional)									
Qtr 3 NE	Qtr 4 NW	Section 8	Twnshp 2	Twنش... N	Range 64	Rng E/... W	Actual Latitude (°) 40.15858557	Actual Longitude (°) -104.57726223	
Wellbore Sections									
Section Des			Size (in)			Act Top, MD (ftKB)		Act Btm, MD (ftKB)	
SURFACE			12 1/4			13		1,076	
PRODUCTION			7 7/8			1076		7,748	
Casing Strings									
Csg Des			Run Date		OD (in)	Wt/Len (lb/ft)	Grade	Top, MD (ftKB)	MD (ftKB)
Surface			8/14/2010		8 5/8	24.00	K-55	13.0	1,065.6
Production			8/17/2010		4 1/2	11.60	M-80	13.0	7,738.2
Cement									
Des					Start Date		Top (ftKB)		Btm (ftKB)
Surface Casing Cement					8/14/2010		13.0		1,065.6
Production Casing Cement					8/17/2010		2,000.0		7,738.2
Zone Statuses									
Zone Name		Status Date	Status	Fluid Type	Job			Prod Method	
NIOBRARA		9/22/2010	PR	Water	DRILLING/COMPLETION - ORIGINAL, 8/13/2010...			Flowing	
NIOBRARA		10/5/2010	PR						
CODELL		10/5/2010	PR						
CODELL		7/22/2015	PR	Water				Flowing	
J SAND		8/12/2013	PR						
J SAND		7/22/2015	PR						
Perforation Data									
Linked Zone			Bnch/Stg	Entered Shot Total	Top (ftKB)		Btm (ftKB)		Date
NIOBRARA, ORIGINAL HOLE			B	24	6,834.00		6,846.00		9/20/2010
NIOBRARA, ORIGINAL HOLE			C	24	6,919.00		6,931.00		9/20/2010
CODELL, ORIGINAL HOLE			01	48	7,064.00		7,076.00		9/20/2010
J SAND, ORIGINAL HOLE				40	7,540.00		7,550.00		8/26/2010
J SAND, ORIGINAL HOLE				32	7,554.00		7,562.00		8/26/2010
Stimulation Intervals									
Zone				Start Date		Top (ftKB)		Btm (ftKB)	
NIOBRARA, ORIGINAL HOLE				9/20/2010		6,834.0		6,931.0	
CODELL, ORIGINAL HOLE				9/20/2010		7,064.0		7,076.0	
J SAND, ORIGINAL HOLE				9/20/2010		7,540.0		7,562.0	
Other In Hole									
Run Date		Des				OD (in)	Top (ftKB)		Btm (ftKB)
Logs									
Date		Type					Top, MD (ftKB)		Btm, MD (ftKB)
8/16/2010		Caliper/Comp. Density/Neutron/GR/SP/ML					1,065.0		7,743.0
8/16/2010		DIL/GR/SP/Caliper					1,065.0		7,743.0
8/26/2010		CBL/CCL/GR					1,850.0		7,663.0
5/8/2017		GYRO					10.0		7,500.0
Plug Back Total Depths									
Date		Type		Com					Depth (ftKB)
8/26/2010		FILL		DEPTH LOGGER					7,664.0
11/2/2010		PLUG REMNANTS		CLEANED OUT WITH NITROGEN.					7,676.0