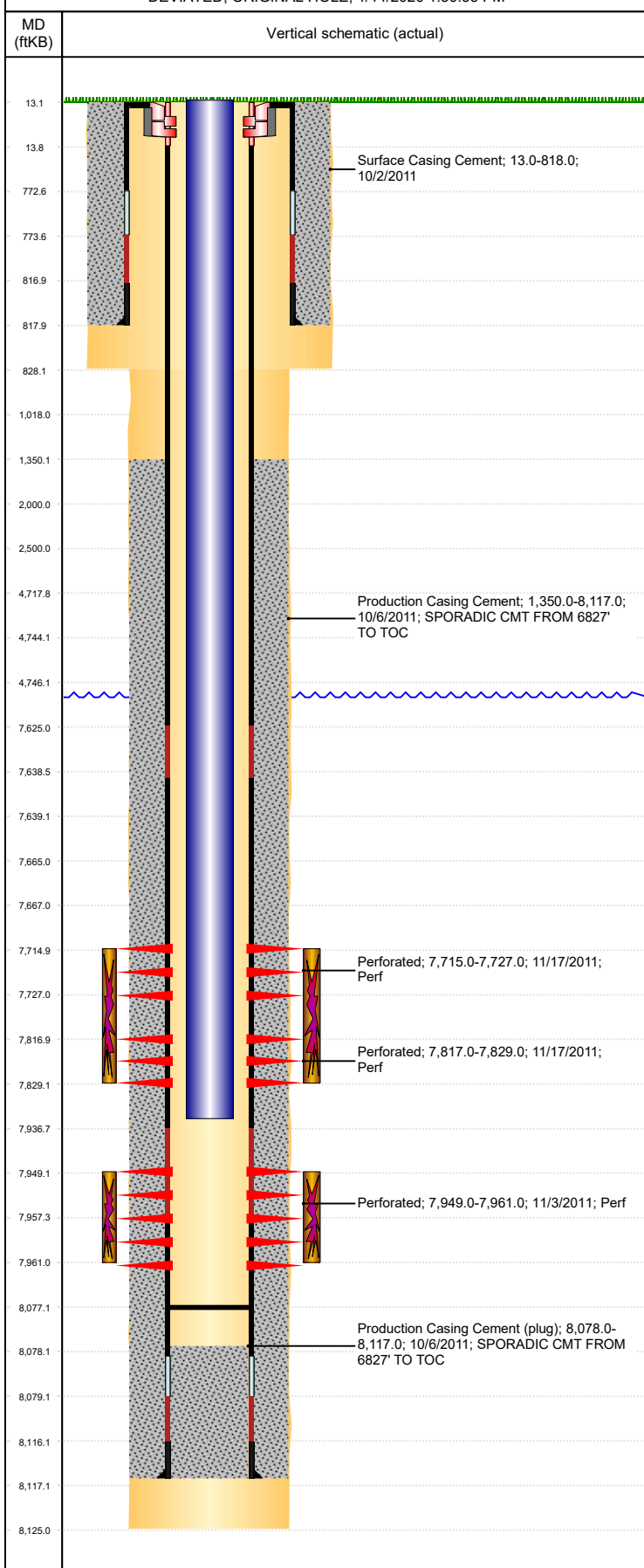


**Well Name: HIPPO D34-30D**

DEVIATED, ORIGINAL HOLE, 1/14/2020 1:50:55 PM



Well Header									
API 05-123-33856		Business Unit DJ BASIN		District 15		Well Config DEVIATED			
KB - GL / MSL (ft... 13.00		Spud Date 10/2/2011		P & A Date		Well Production Status PR		SoRT No	
Comment									
Surface Location (Congressional)									
Qtr 3 NE	Qtr 4 SW	Section 27	Twonshp 3	Twonsh... N	Range 64	Rng E/... W	Actual Latitude (°) 40.19461719	Actual Longitude (°) -104.53875208	
Wellbore Sections									
Section Des			Size (in)		Act Top, MD (ftKB)		Act Btm, MD (ftKB)		
SURFACE			12 1/4		13		828		
PRODUCTION			7 7/8		828		8,125		
Casing Strings									
Csg Des		Run Date		OD (in)	Wt/Len (lb/ft)	Grade	Top, MD (ftKB)	MD (ftKB)	
Surface		10/2/2011		8 5/8	24.00	J-55	13.0	818.0	
PRODUCTION		10/6/2011		4 1/2	11.60	M-80	13.0	8,117.0	
Cement									
Des				Start Date		Top (ftKB)		Btm (ftKB)	
Surface Casing Cement				10/2/2011		13.0		818.0	
Production Casing Cement				10/6/2011		1,350.0		8,117.0	
Zone Statuses									
Zone Name	Status Date	Status	Fluid Type	Job				Prod Method	
NIOBRARA	11/21/2011	PR		DRILLING/COMPLETION - ORIGINAL, 10/2/2011...					
CODELL	11/21/2011	PR		DRILLING/COMPLETION - ORIGINAL, 10/2/2011...					
Perforation Data									
Linked Zone		Bnch/Stg	Entered Shot Total	Top (ftKB)		Btm (ftKB)		Date	
NIOBRARA, ORIGINAL HOLE		A	24	7,715.00		7,727.00		11/17/2011	
NIOBRARA, ORIGINAL HOLE		B	24	7,817.00		7,829.00		11/17/2011	
CODELL, ORIGINAL HOLE		01	48	7,949.00		7,961.00		11/3/2011	
Stimulation Intervals									
Zone			Start Date		Top (ftKB)		Btm (ftKB)		
NIOBRARA, ORIGINAL HOLE			11/17/2011		7,715.0		7,829.0		
CODELL, ORIGINAL HOLE			11/17/2011		7,949.0		7,961.0		
Other In Hole									
Run Date		Des			OD (in)	Top (ftKB)	Btm (ftKB)		
Logs									
Date		Type				Top, MD (ftKB)		Btm, MD (ftKB)	
10/18/2011		CBL/CCL/GR				13.0		8,026.0	
Plug Back Total Depths									
Date		Type		Com				Depth (ftKB)	
10/18/2011		FILL		DEPTH LOGGER ON CBL				8,033.0	
4/13/2012		PLUG REMNANTS						8,077.0	