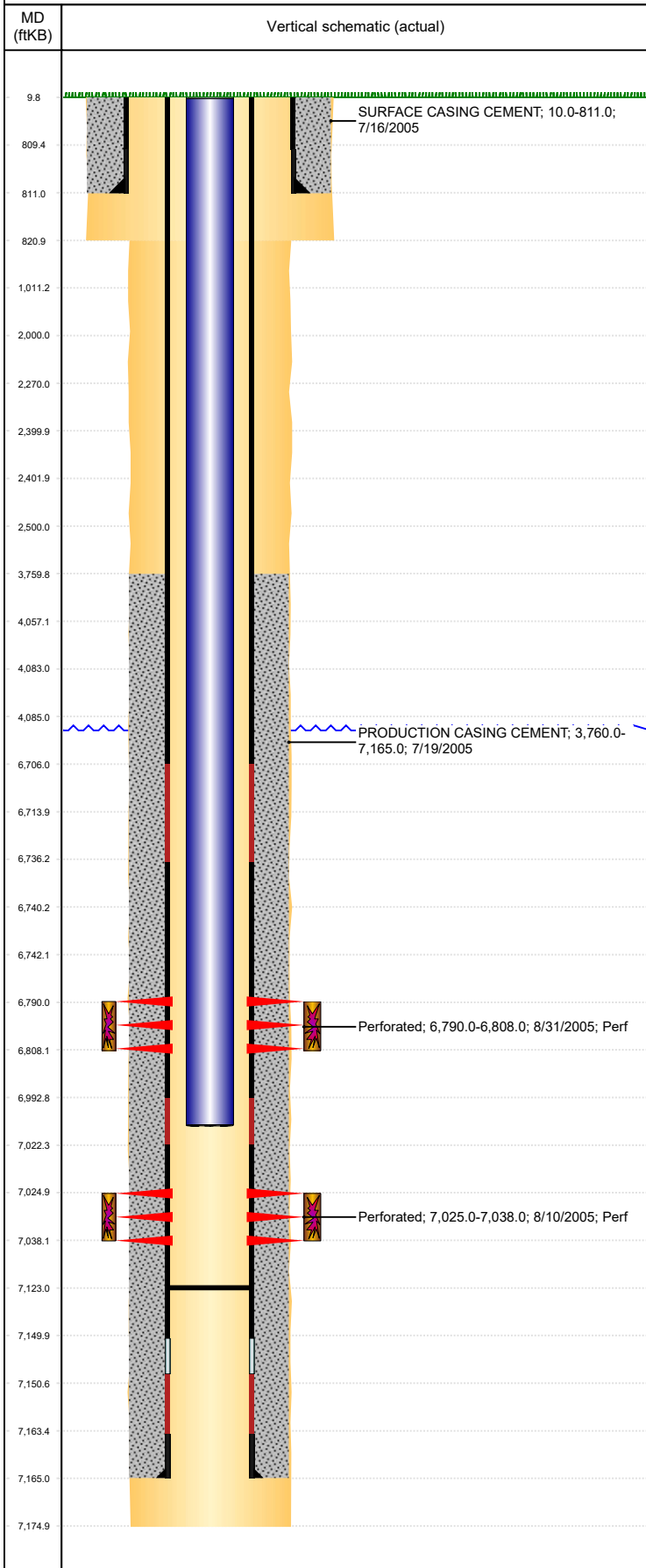


Well Name: GUTTERSEN D33- 9

VERTICAL, ORIGINAL HOLE, 1/14/2020 1:46:41 PM



| Well Header | | | | | | | | | |
|----------------------------------|-------------|------------------------|---------------------------|--|-------------|------------------------------|------------------------------------|---------------------------------------|------------|
| API 05-123-22900 | | | Business Unit DJ BASIN | | | District 15 | | Well Config VERTICAL | |
| KB - GL / MSL (ft... 10.00 | | Spud Date 7/15/2005 | | P & A Date | | Well Production Status PR | | | SoRT No |
| Comment | | | | | | | | | |
| Surface Location (Congressional) | | | | | | | | | |
| Qtr 3 NE | Qtr 4 SE | Section 33 | Twنشp 3 | Twنش... N | Range 64 | Rng E/... W | Actual Latitude (°) 40.17950533 | Actual Longitude (°) -104.54893655 | |
| Wellbore Sections | | | | | | | | | |
| Section Des | | | Size (in) | | | Act Top, MD (ftKB) | | Act Btm, MD (ftKB) | |
| SURFACE | | | 12 1/4 | | | 10 | | 821 | |
| PRODUCTION | | | 7 7/8 | | | 821 | | 7,175 | |
| Casing Strings | | | | | | | | | |
| Csg Des | | | Run Date | | OD (in) | Wt/Len (lb/ft) | Grade | Top, MD (ftKB) | MD (ftKB) |
| Surface | | | 7/16/2005 | | 8 5/8 | 24.00 | J-55 | 10.0 | 811.0 |
| Production | | | 7/19/2005 | | 4 1/2 | 11.60 | M-80 | 10.0 | 7,165.0 |
| Cement | | | | | | | | | |
| Des | | | | | Start Date | | Top (ftKB) | | Btm (ftKB) |
| SURFACE CASING CEMENT | | | | | 7/16/2005 | | 10.0 | | 811.0 |
| PRODUCTION CASING CEMENT | | | | | 7/19/2005 | | 3,760.0 | | 7,165.0 |
| Zone Statuses | | | | | | | | | |
| Zone Name | Status Date | Status | Fluid Type | Job | | | | Prod Method | |
| NIOBRARA | 9/4/2005 | PR | | DRILLING/COMPLETION - ORIGINAL, 7/15/2005... | | | | Flowing | |
| CODELL | 9/4/2005 | PR | | DRILLING/COMPLETION - ORIGINAL, 7/15/2005... | | | | Flowing | |
| CODELL | 9/29/2005 | PR | | DRILLING/COMPLETION - ORIGINAL, 7/15/2005... | | | | Flowing | |
| Perforation Data | | | | | | | | | |
| Linked Zone | | | Bnch/Stg | Entered Shot Total | Top (ftKB) | | Btm (ftKB) | | Date |
| NIOBRARA, ORIGINAL HOLE | | | | 108 | 6,790.00 | | 6,808.00 | | 8/31/2005 |
| CODELL, ORIGINAL HOLE | | | | 52 | 7,025.00 | | 7,038.00 | | 8/10/2005 |
| Stimulation Intervals | | | | | | | | | |
| Zone | | | | Start Date | | Top (ftKB) | | Btm (ftKB) | |
| NIOBRARA, ORIGINAL HOLE | | | | 8/31/2005 | | 6,790.0 | | 6,808.0 | |
| CODELL, ORIGINAL HOLE | | | | 8/31/2005 | | 7,025.0 | | 7,038.0 | |
| Other In Hole | | | | | | | | | |
| Run Date | | Des | | | | OD (in) | Top (ftKB) | | Btm (ftKB) |
| 7/12/2018 | | Plunger Lift | | | | 1 7/8 | | | |
| Logs | | | | | | | | | |
| Date | | Type | | | | Top, MD (ftKB) | | Btm, MD (ftKB) | |
| 7/19/2005 | | COMPENSATED DENSITY | | | | 4,100.0 | | 7,152.0 | |
| 7/19/2005 | | INDUCTION | | | | 770.0 | | 7,172.0 | |
| 8/10/2005 | | CEMENT BOND | | | | 3,600.0 | | 7,112.0 | |
| 6/19/2017 | | GYRO | | | | 0.0 | | 6,950.0 | |
| Plug Back Total Depths | | | | | | | | | |
| Date | | Type | | Com | | | | Depth (ftKB) | |
| 8/10/2005 | | FILL | | DEPTH LOGGER ON CBL | | | | 7,115.0 | |
| 9/29/2005 | | FILL | | DRILL OUT PLUG & CLEAN OUT | | | | 7,123.0 | |