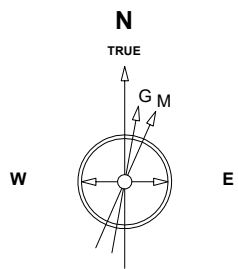


# Great Western Operating Company, LLC

**Location** Colorado  
**Field** Wattenburg  
**Installation** Brant  
**Slot** N12 - Brant LE 08-039HC  
**Well** Brant LE 08-039HC  
**Wellbore** Brant LE 08-039HC-ST01

Created by mmount  
 Date plotted 13-Jan-2020  
 Plot reference is Brant LE 08-039HC-ST01.  
 Ref wellpath is SLB ST01-R1.  
 Coordinates are in Feet reference N12 - Brant LE 08-039HC.  
 True Vertical Depths are reference Rig Datum.  
 Measured Depths are reference Rig Datum.  
 Rig Datum: Planned Datum #1  
 Rig Datum to Mean Sea Level: 4993.00 ft.  
 Plot North is aligned to TRUE North.



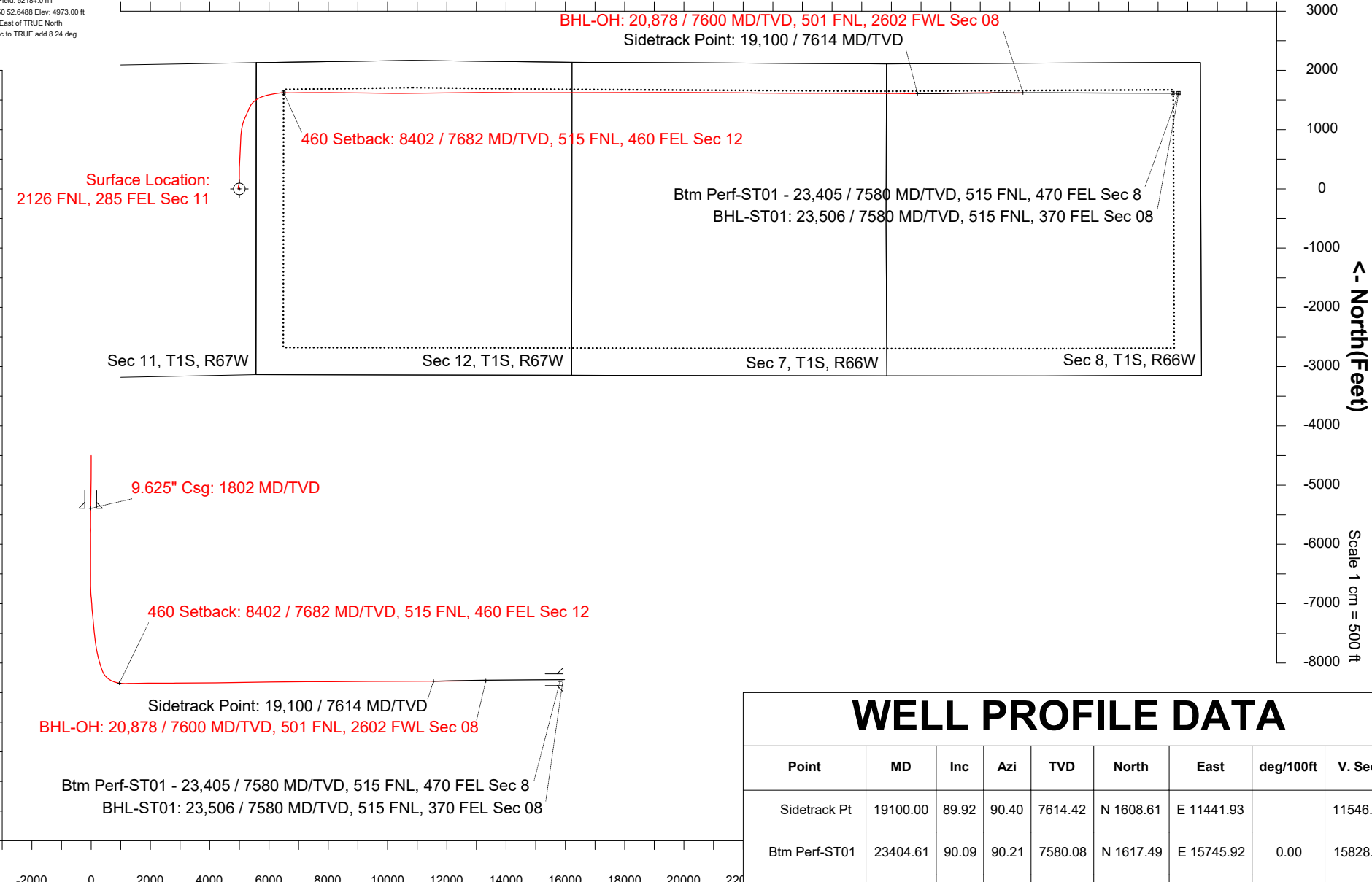
Scale 1 cm = 500 ft

East (Feet) ->



Apr-14-2017  
 IGRF-12 Dip: 66.51 deg Field: 52184.0 nT  
 Lat: N39 58 49.6308 Long: W104 50 52.6488 Elev: 4973.00 ft  
 Magnetic North is 8.24 deg East of TRUE North  
 To correct azimuth from Magnetic to TRUE add 8.24 deg

True Vertical Depth (Feet)  
 Scale 1 cm = 1000 ft



Azimuth 82.31 with reference 0.00 N, 0.00 E from N12 - Brant LE 08-039HC

## WELL PROFILE DATA

Point	MD	Inc	Azi	TVD	North	East	deg/100ft	V. Sect
Sidetrack Pt	19100.00	89.92	90.40	7614.42	N 1608.61	E 11441.93		11546.12
Btm Perf-ST01	23404.61	90.09	90.21	7580.08	N 1617.49	E 15745.92	0.00	15828.77
460 Setback	23414.61	90.09	90.21	7580.06	N 1617.46	E 15755.92	0.00	15838.72
BHL-ST01	23506.00	90.09	90.21	7579.92	N 1617.12	E 15847.30	0.00	15929.60