

## Inspection Photos

Location Name: Alkali Creek Compression Station and associated Spills

Spill/Release IDs: #469032 and #469307

Inspection Date: January 8, 2020

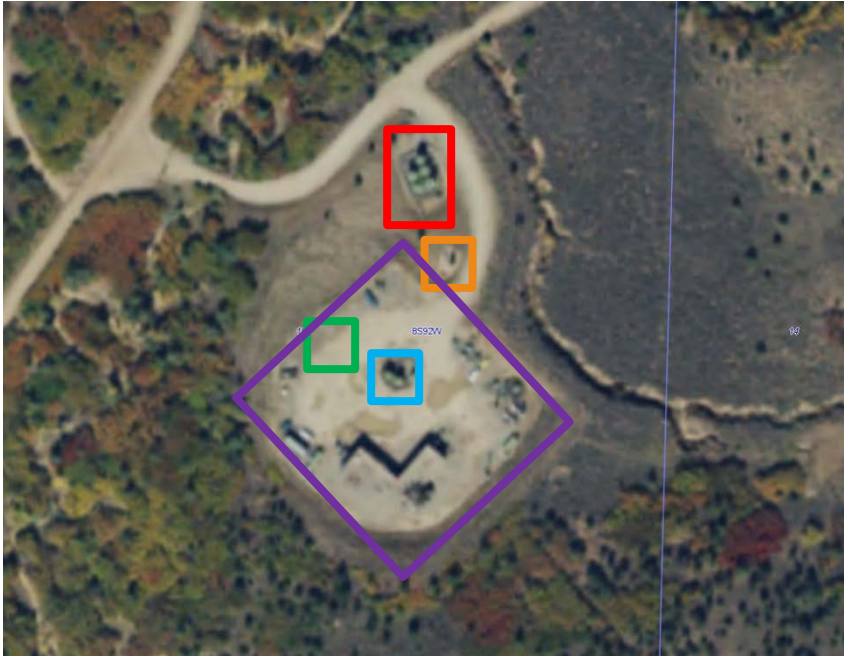


Photo #1 – COGCC GIS Aerial photo of facility dated 2017, color coded by areas referenced in this report.

North/former tank battery, ECD, central tank battery,  
northwest tank battery, Alkali Creek Compressor station pad.



Photo #2 – Sign located at entrance to facility.



**COLORADO**  
Oil & Gas Conservation  
Commission  
Department of Natural Resources

## Inspection Photos

Location Name: Alkali Creek Compression Station and associated Spills

Spill/Release IDs: #469032 and #469307

Inspection Date: January 8, 2020



Photo #3 – View of former **north tank battery** area, from south.



Photo #4 – Uncapped and capped flowlines and flowline risers as well as cement debris, bucket, and felt/liner scraps remaining in former **north tank battery** area.



**COLORADO**

Oil & Gas Conservation  
Commission

Department of Natural Resources



## Inspection Photos

Location Name: Alkali Creek Compression Station and associated Spills

Spill/Release IDs: #469032 and #469307

Inspection Date: January 8, 2020



Photo #5 – Felt material remains in situ in former **north tank battery** area.



Photo #6 - Tank battery liner material and felt remaining on east side of former **north tank battery** area.



**COLORADO**  
Oil & Gas Conservation  
Commission  
Department of Natural Resources



## Inspection Photos

Location Name: Alkali Creek Compression Station and associated Spills

Spill/Release IDs: #469032 and #469307

Inspection Date: January 8, 2020



Photo #7 – **ECD area**, exposed flowlines, and open excavations remain south of former tank battery area.



Photo #8 – View of flowlines inside of open excavation inside **ECD area**. Note red circle marks the location of two cut flowlines.



**COLORADO**  
Oil & Gas Conservation  
Commission  
Department of Natural Resources

## Inspection Photos

Location Name: Alkali Creek Compression Station and associated Spills

Spill/Release IDs: #469032 and #469307

Inspection Date: January 8, 2020



Photo #9 – Additional exposed flowlines inside of excavation in **ECD** area.



Photo #10 – Overview of tank batteries on **Alkali Creek Compressor Station pad**, from north. Note fenced area on east side of photo marks pothole location.





## Inspection Photos

Location Name: Alkali Creek Compression Station and associated Spills

Spill/Release IDs: #469032 and #469307

Inspection Date: January 8, 2020



Photo #11 – View of four (4) 400 bbl steel ASTs labeled “Produced Water” located inside of lined, metal secondary containment in center of pad. **Central tank battery.**

This tank battery was inoperable on inspection date and overlies the location of Spill/Release ID #469307 and Remediation Project #14660.



Photo #12 – View of two (2) 400 bbl steel ASTs labeled to contain both condensate and produced water located inside of lined, metal secondary containment at northwest side of pad. **Northwest tank battery.**



**COLORADO**

Oil & Gas Conservation  
Commission

Department of Natural Resources

## Inspection Photos

Location Name: Alkali Creek Compression Station and associated Spills

Spill/Release IDs: #469032 and #469307

Inspection Date: January 8, 2020



**Photo #13 – View of fenced pothole located on north side of pad.**



**Photo #14 – Unused pipe stored on north side of pad.**



**COLORADO**

Oil & Gas Conservation  
Commission

Department of Natural Resources