

# PETROLEUM DEVELOPMENT CORP Weld County CO

Well Name: **Maxey 240-232**

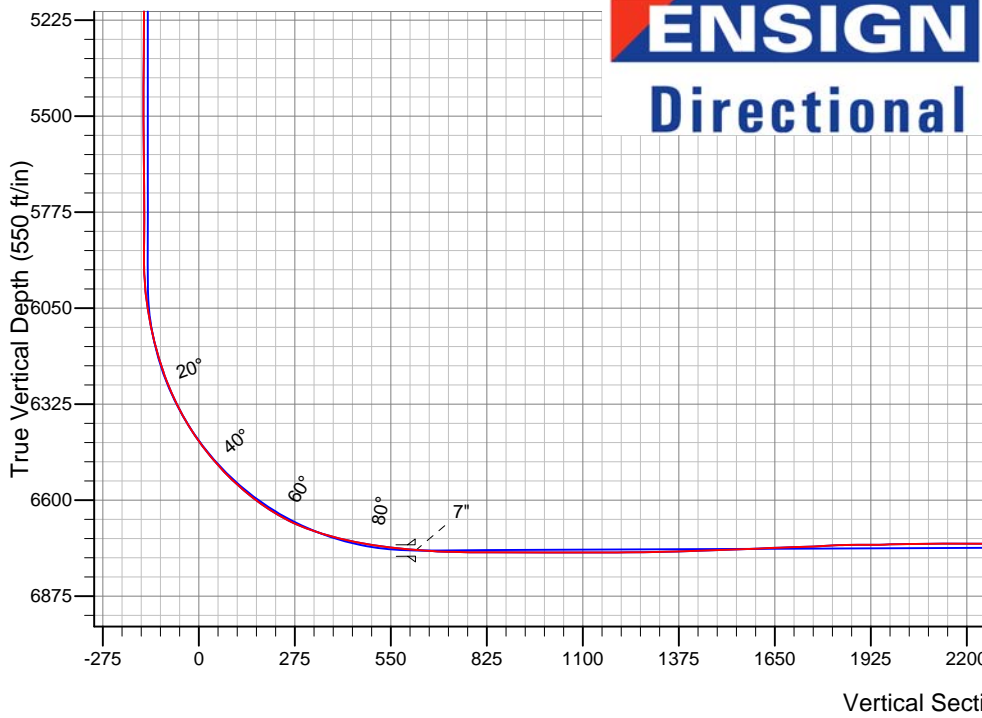
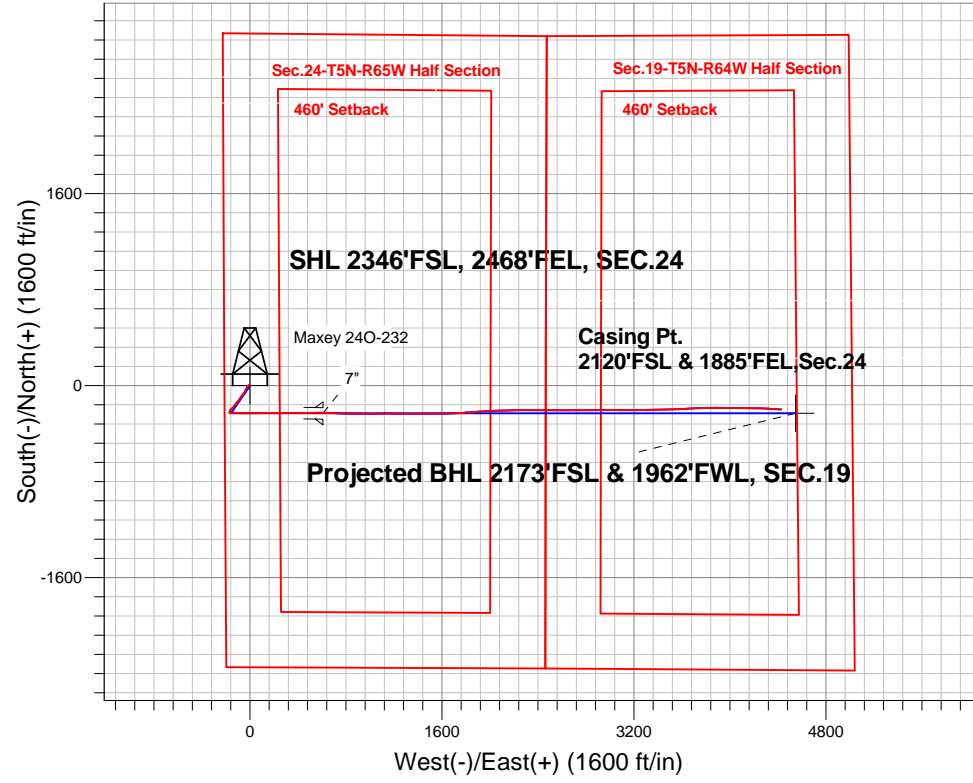
Surface Location: Maxey 240-HZ Pad Sec.24-T5N-R65W  
 North American Datum 1983 , US State Plane 1983 , Colorado Northern Zone

Ground Elevation: 4636.0

+N/-S	+E/-W	Northing	Easting	Latitude	Longitude	Slot
0.0	0.0	1383922.72	3247717.36	40.383860	-104.610760	
RKB - 15' WELL @ 4651.0ft (RKB - 15')						

## FINAL SURVEY

Projected Bottom Hole Location  
 11018'MD 6718'TVD 198'S & 4427'E of SHL  
 90.5 degree Incl @ 92.8 degree AZM



Maxey 240-HZ Pad Sec.24-T5N-R65W  
 Maxey 240-232  
 Wellbore #1  
 10:43, June 11 2014

### ANNOTATIONS

No annotation data is available.

### LEGEND

- Maxey 240-232, Wellbore #1, Plan #3 (5-27-14)R V0
- Wellbore #1
- Survey #1

Projected BHL 2173'FSL & 1962'FWL, SEC.19



# **PETROLEUM DEVELOPMENT CORP Weld County CO**

**SEC.24-T5N-R65W**

**Maxey 240-HZ Pad Sec.24-T5N-R65W**

**Maxey 240-232**

**Wellbore #1**

**Survey: Survey #1**

## **Standard Survey Report**

**11 June, 2014**



<b>Company:</b>	PETROLEUM DEVELOPMENT CORP Weld County CO	<b>Local Co-ordinate Reference:</b>	Well Maxey 24O-232
<b>Project:</b>	SEC.24-T5N-R65W	<b>TVD Reference:</b>	WELL @ 4651.0ft (RKB - 15')
<b>Site:</b>	Maxey 24O-HZ Pad Sec.24-T5N-R65W	<b>MD Reference:</b>	WELL @ 4651.0ft (RKB - 15')
<b>Well:</b>	Maxey 24O-232	<b>North Reference:</b>	True
<b>Wellbore:</b>	Wellbore #1	<b>Survey Calculation Method:</b>	Minimum Curvature
<b>Design:</b>	Wellbore #1	<b>Database:</b>	Landmark

<b>Project</b>	SEC.24-T5N-R65W, Weld County, Colorado		
<b>Map System:</b>	US State Plane 1983	<b>System Datum:</b>	Mean Sea Level
<b>Geo Datum:</b>	North American Datum 1983		Using Well Reference Point
<b>Map Zone:</b>	Colorado Northern Zone		Using geodetic scale factor

<b>Site</b>	Maxey 24O-HZ Pad Sec.24-T5N-R65W				
<b>Site Position:</b>		<b>Northing:</b>	1,383,922.11 ft	<b>Latitude:</b>	40.383860
<b>From:</b>	Lat/Long	<b>Easting:</b>	3,247,656.08 ft	<b>Longitude:</b>	-104.610980
<b>Position Uncertainty:</b>	0.0 ft	<b>Slot Radius:</b>	"	<b>Grid Convergence:</b>	0.57 °

<b>Well</b>	Maxey 24O-232					
<b>Well Position</b>	<b>+N/-S</b>	0.0 ft	<b>Northing:</b>	1,383,922.72 ft	<b>Latitude:</b>	40.383860
	<b>+E/-W</b>	0.0 ft	<b>Easting:</b>	3,247,717.36 ft	<b>Longitude:</b>	-104.610760
<b>Position Uncertainty</b>		0.0 ft	<b>Wellhead Elevation:</b>	ft	<b>Ground Level:</b>	4,636.0 ft

<b>Wellbore</b>	Wellbore #1				
<b>Magnetics</b>	<b>Model Name</b>	<b>Sample Date</b>	<b>Declination (°)</b>	<b>Dip Angle (°)</b>	<b>Field Strength (nT)</b>
	IGRF2010	5/27/2014	8.38	66.96	52,830

<b>Design</b>	Wellbore #1				
<b>Audit Notes:</b>					
<b>Version:</b>	1.0	<b>Phase:</b>	ACTUAL	<b>Tie On Depth:</b>	0.0
<b>Vertical Section:</b>	<b>Depth From (TVD) (ft)</b>	<b>+N/-S (ft)</b>	<b>+E/-W (ft)</b>	<b>Direction (°)</b>	
	0.0	0.0	0.0	92.91	

<b>Survey Program</b>	<b>Date</b>	6/11/2014		
<b>From (ft)</b>	<b>To (ft)</b>	<b>Survey (Wellbore)</b>	<b>Tool Name</b>	<b>Description</b>
146.0	11,018.0	Survey #1 (Wellbore #1)	MWD	MWD - Standard

<b>Survey</b>										
<b>Measured Depth (ft)</b>	<b>Inclination (°)</b>	<b>Azimuth (°)</b>	<b>Vertical Depth (ft)</b>	<b>+N/-S (ft)</b>	<b>+E/-W (ft)</b>	<b>Vertical Section (ft)</b>	<b>Dogleg Rate (°/100ft)</b>	<b>Build Rate (°/100ft)</b>	<b>Turn Rate (°/100ft)</b>	
0.0	0.00	0.00	0.0	0.0	0.0	0.0	0.00	0.00	0.00	
1.0	0.00	258.30	1.0	0.0	0.0	0.0	0.41	0.41	0.00	
<b>SHL 2346'FSL, 2468'FEL, SEC.24</b>										
146.0	0.60	258.30	146.0	-0.2	-0.7	-0.7	0.41	0.41	0.00	
238.0	0.90	13.40	238.0	0.5	-1.1	-1.1	1.39	0.33	125.11	
330.0	1.10	14.10	330.0	2.0	-0.7	-0.8	0.22	0.22	0.76	
421.0	0.70	10.00	421.0	3.4	-0.4	-0.5	0.44	-0.44	-4.51	
512.0	0.90	350.60	512.0	4.7	-0.4	-0.6	0.37	0.22	-21.32	
603.0	0.80	333.60	602.9	5.9	-0.8	-1.1	0.30	-0.11	-18.68	
695.0	0.30	288.10	694.9	6.6	-1.3	-1.6	0.68	-0.54	-49.46	
786.0	0.30	184.80	785.9	6.4	-1.5	-1.9	0.52	0.00	-113.52	
877.0	0.30	259.10	876.9	6.1	-1.8	-2.1	0.40	0.00	81.65	

<b>Company:</b>	PETROLEUM DEVELOPMENT CORP Weld County CO	<b>Local Co-ordinate Reference:</b>	Well Maxey 24O-232
<b>Project:</b>	SEC.24-T5N-R65W	<b>TVD Reference:</b>	WELL @ 4651.0ft (RKB - 15')
<b>Site:</b>	Maxey 24O-HZ Pad Sec.24-T5N-R65W	<b>MD Reference:</b>	WELL @ 4651.0ft (RKB - 15')
<b>Well:</b>	Maxey 24O-232	<b>North Reference:</b>	True
<b>Wellbore:</b>	Wellbore #1	<b>Survey Calculation Method:</b>	Minimum Curvature
<b>Design:</b>	Wellbore #1	<b>Database:</b>	Landmark

Survey									
Measured Depth (ft)	Inclination (°)	Azimuth (°)	Vertical Depth (ft)	+N/-S (ft)	+E/-W (ft)	Vertical Section (ft)	Dogleg Rate (°/100ft)	Build Rate (°/100ft)	Turn Rate (°/100ft)
968.0	0.40	244.90	967.9	6.0	-2.3	-2.6	0.14	0.11	-15.60
1,059.0	0.50	244.40	1,058.9	5.6	-3.0	-3.2	0.11	0.11	-0.55
1,151.0	0.60	248.70	1,150.9	5.3	-3.8	-4.0	0.12	0.11	4.67
1,249.0	0.70	247.10	1,248.9	4.9	-4.8	-5.0	0.10	0.10	-1.63
1,344.0	0.70	257.60	1,343.9	4.5	-5.9	-6.1	0.13	0.00	11.05
1,439.0	0.70	262.70	1,438.9	4.3	-7.0	-7.3	0.07	0.00	5.37
1,534.0	1.70	238.60	1,533.9	3.5	-8.8	-9.0	1.16	1.05	-25.37
1,629.0	2.60	233.40	1,628.8	1.5	-11.8	-11.8	0.97	0.95	-5.47
1,724.0	3.60	216.60	1,723.7	-2.2	-15.3	-15.1	1.41	1.05	-17.68
1,819.0	4.30	219.20	1,818.5	-7.3	-19.3	-18.9	0.76	0.74	2.74
1,914.0	5.00	216.50	1,913.1	-13.4	-24.0	-23.3	0.77	0.74	-2.84
2,009.0	5.30	209.00	2,007.8	-20.6	-28.6	-27.5	0.78	0.32	-7.89
2,104.0	5.10	206.50	2,102.4	-28.2	-32.6	-31.1	0.32	-0.21	-2.63
2,199.0	4.90	206.00	2,197.0	-35.6	-36.3	-34.4	0.22	-0.21	-0.53
2,294.0	4.70	206.30	2,291.7	-42.8	-39.8	-37.6	0.21	-0.21	0.32
2,389.0	5.30	209.60	2,386.3	-50.1	-43.7	-41.1	0.70	0.63	3.47
2,484.0	4.70	210.60	2,481.0	-57.2	-47.8	-44.9	0.64	-0.63	1.05
2,579.0	5.50	216.90	2,575.6	-64.2	-52.5	-49.2	1.03	0.84	6.63
2,674.0	6.00	216.40	2,670.1	-71.9	-58.2	-54.5	0.53	0.53	-0.53
2,768.0	5.90	217.50	2,763.6	-79.6	-64.1	-59.9	0.16	-0.11	1.17
2,863.0	6.50	213.10	2,858.0	-88.0	-70.0	-65.4	0.81	0.63	-4.63
2,958.0	6.50	214.20	2,952.4	-97.0	-75.9	-70.9	0.13	0.00	1.16
3,053.0	5.80	212.20	3,046.9	-105.5	-81.5	-76.1	0.77	-0.74	-2.11
3,147.0	5.50	219.20	3,140.4	-113.0	-86.9	-81.0	0.80	-0.32	7.45
3,242.0	5.10	221.80	3,235.0	-119.7	-92.6	-86.4	0.49	-0.42	2.74
3,337.0	5.10	220.80	3,329.6	-126.0	-98.2	-91.6	0.09	0.00	-1.05
3,433.0	4.80	216.30	3,425.3	-132.5	-103.3	-96.5	0.51	-0.31	-4.69
3,527.0	4.00	220.80	3,519.0	-138.1	-107.8	-100.6	0.93	-0.85	4.79
3,623.0	5.60	215.10	3,614.7	-144.5	-112.7	-105.2	1.74	1.67	-5.94
3,718.0	6.40	215.10	3,709.1	-152.6	-118.4	-110.5	0.84	0.84	0.00
3,813.0	7.00	217.20	3,803.5	-161.6	-124.9	-116.6	0.68	0.63	2.21
3,908.0	7.20	219.20	3,897.8	-170.8	-132.2	-123.4	0.33	0.21	2.11
4,003.0	6.30	222.80	3,992.1	-179.2	-139.5	-130.2	1.05	-0.95	3.79
4,098.0	6.00	224.30	4,086.6	-186.6	-146.5	-136.9	0.36	-0.32	1.58
4,192.0	5.40	227.30	4,180.1	-193.1	-153.2	-143.2	0.71	-0.64	3.19
4,287.0	4.90	228.20	4,274.7	-198.9	-159.5	-149.2	0.53	-0.53	0.95
4,382.0	4.20	215.80	4,369.4	-204.4	-164.6	-154.0	1.27	-0.74	-13.05
4,477.0	3.50	203.00	4,464.2	-209.9	-167.7	-156.9	1.16	-0.74	-13.47
4,572.0	2.40	187.40	4,559.1	-214.5	-169.1	-158.0	1.42	-1.16	-16.42
4,667.0	1.40	179.20	4,654.0	-217.7	-169.4	-158.1	1.09	-1.05	-8.63
4,762.0	1.10	174.90	4,749.0	-219.7	-169.3	-157.9	0.33	-0.32	-4.53
4,858.0	0.70	162.60	4,845.0	-221.2	-169.0	-157.6	0.46	-0.42	-12.81
4,953.0	0.60	168.50	4,940.0	-222.2	-168.7	-157.2	0.13	-0.11	6.21
5,048.0	0.60	181.40	5,035.0	-223.2	-168.6	-157.1	0.14	0.00	13.58
5,143.0	0.40	202.30	5,130.0	-224.0	-168.8	-157.2	0.28	-0.21	22.00
5,238.0	0.30	230.40	5,225.0	-224.5	-169.1	-157.5	0.21	-0.11	29.58
5,333.0	0.30	285.80	5,320.0	-224.6	-169.5	-157.9	0.29	0.00	58.32
5,429.0	0.30	289.60	5,416.0	-224.4	-170.0	-158.4	0.02	0.00	3.96
5,523.0	0.10	101.60	5,510.0	-224.4	-170.2	-158.6	0.42	-0.21	182.98
5,618.0	0.70	78.90	5,605.0	-224.3	-169.5	-157.9	0.64	0.63	-23.89
5,713.0	0.70	77.60	5,700.0	-224.0	-168.4	-156.8	0.02	0.00	-1.37
5,807.0	0.20	285.80	5,794.0	-223.9	-168.0	-156.4	0.94	-0.53	-161.49
5,871.0	0.60	260.20	5,858.0	-223.9	-168.4	-156.8	0.67	0.63	-40.00
5,903.0	0.70	247.10	5,890.0	-224.0	-168.8	-157.2	0.56	0.31	-40.94

<b>Company:</b>	PETROLEUM DEVELOPMENT CORP Weld County CO	<b>Local Co-ordinate Reference:</b>	Well Maxey 24O-232
<b>Project:</b>	SEC.24-T5N-R65W	<b>TVD Reference:</b>	WELL @ 4651.0ft (RKB - 15')
<b>Site:</b>	Maxey 24O-HZ Pad Sec.24-T5N-R65W	<b>MD Reference:</b>	WELL @ 4651.0ft (RKB - 15')
<b>Well:</b>	Maxey 24O-232	<b>North Reference:</b>	True
<b>Wellbore:</b>	Wellbore #1	<b>Survey Calculation Method:</b>	Minimum Curvature
<b>Design:</b>	Wellbore #1	<b>Database:</b>	Landmark

Survey									
Measured Depth (ft)	Inclination (°)	Azimuth (°)	Vertical Depth (ft)	+N/-S (ft)	+E/-W (ft)	Vertical Section (ft)	Dogleg Rate (°/100ft)	Build Rate (°/100ft)	Turn Rate (°/100ft)
5,934.0	1.00	131.90	5,921.0	-224.3	-168.7	-157.1	4.66	0.97	-371.61
5,966.0	2.90	106.30	5,952.9	-224.7	-167.7	-156.1	6.39	5.94	-80.00
5,998.0	4.70	99.60	5,984.9	-225.1	-165.7	-154.0	5.78	5.63	-20.94
6,029.0	6.60	97.20	6,015.7	-225.5	-162.6	-151.0	6.17	6.13	-7.74
6,061.0	8.40	94.80	6,047.4	-226.0	-158.5	-146.8	5.71	5.63	-7.50
6,093.0	10.20	93.40	6,079.0	-226.3	-153.3	-141.7	5.67	5.63	-4.38
6,125.0	11.90	92.10	6,110.4	-226.6	-147.2	-135.5	5.37	5.31	-4.06
6,156.0	13.60	91.90	6,140.7	-226.9	-140.4	-128.7	5.49	5.48	-0.65
6,188.0	15.40	91.50	6,171.6	-227.1	-132.4	-120.7	5.63	5.63	-1.25
6,220.0	17.30	91.40	6,202.3	-227.3	-123.4	-111.7	5.94	5.94	-0.31
6,251.0	19.40	91.70	6,231.8	-227.6	-113.6	-101.9	6.78	6.77	0.97
6,283.0	21.50	91.90	6,261.7	-227.9	-102.4	-90.7	6.57	6.56	0.63
6,314.0	23.50	92.10	6,290.4	-228.4	-90.6	-78.9	6.46	6.45	0.65
6,346.0	25.60	91.80	6,319.5	-228.8	-77.3	-65.6	6.57	6.56	-0.94
6,378.0	28.00	91.40	6,348.0	-229.2	-62.9	-51.2	7.52	7.50	-1.25
6,409.0	30.50	90.80	6,375.1	-229.5	-47.7	-36.0	8.12	8.06	-1.94
6,441.0	32.90	90.40	6,402.3	-229.7	-30.9	-19.2	7.53	7.50	-1.25
6,473.0	35.20	89.70	6,428.8	-229.7	-13.0	-1.3	7.29	7.19	-2.19
6,504.0	37.60	89.20	6,453.8	-229.5	5.4	17.0	7.80	7.74	-1.61
6,536.0	40.10	88.70	6,478.7	-229.1	25.5	37.1	7.87	7.81	-1.56
6,568.0	42.20	88.70	6,502.8	-228.7	46.5	58.1	6.56	6.56	0.00
6,599.0	44.50	88.70	6,525.3	-228.2	67.8	79.3	7.42	7.42	0.00
6,631.0	46.90	89.50	6,547.7	-227.8	90.7	102.1	7.71	7.50	2.50
6,662.0	49.20	90.00	6,568.4	-227.7	113.7	125.1	7.52	7.42	1.61
6,694.0	51.30	90.50	6,588.9	-227.8	138.3	149.7	6.67	6.56	1.56
6,726.0	54.00	90.60	6,608.3	-228.1	163.8	175.1	8.44	8.44	0.31
6,757.0	57.00	90.50	6,625.8	-228.3	189.3	200.7	9.68	9.68	-0.32
6,789.0	60.10	90.70	6,642.5	-228.6	216.6	227.9	9.70	9.69	0.63
6,821.0	63.30	90.60	6,657.7	-228.9	244.8	256.1	10.00	10.00	-0.31
6,853.0	66.50	90.50	6,671.3	-229.2	273.8	285.0	10.00	10.00	-0.31
6,884.0	69.70	89.90	6,682.8	-229.3	302.5	313.8	10.48	10.32	-1.94
6,916.0	72.40	89.30	6,693.2	-229.1	332.8	344.0	8.62	8.44	-1.88
6,947.0	74.50	89.20	6,702.0	-228.7	362.5	373.6	6.78	6.77	-0.32
6,979.0	76.50	89.40	6,710.1	-228.3	393.5	404.5	6.28	6.25	0.63
7,011.0	78.20	89.30	6,717.1	-228.0	424.7	435.7	5.32	5.31	-0.31
7,042.0	79.60	89.20	6,723.0	-227.6	455.1	466.1	4.53	4.52	-0.32
7,074.0	81.10	89.10	6,728.4	-227.1	486.6	497.5	4.70	4.69	-0.31
7,105.0	82.50	89.20	6,732.8	-226.6	517.3	528.2	4.53	4.52	0.32
7,171.0	84.80	90.30	6,740.1	-226.4	582.9	593.6	3.86	3.48	1.67
7,201.0	85.30	90.10	6,742.7	-226.5	612.8	623.5	1.79	1.67	-0.67
7,232.0	86.20	90.90	6,745.0	-226.7	643.7	654.4	3.88	2.90	2.58
7,262.0	87.60	91.30	6,746.6	-227.3	673.7	684.3	4.85	4.67	1.33
7,292.0	88.10	92.20	6,747.8	-228.2	703.6	714.3	3.43	1.67	3.00
7,322.0	89.10	92.90	6,748.5	-229.6	733.6	744.3	4.07	3.33	2.33
7,353.0	89.30	92.90	6,748.9	-231.1	764.5	775.3	0.65	0.65	0.00
7,383.0	89.80	92.30	6,749.2	-232.5	794.5	805.3	2.60	1.67	-2.00
7,414.0	90.20	92.50	6,749.2	-233.8	825.5	836.3	1.44	1.29	0.65
7,444.0	90.00	91.70	6,749.1	-234.9	855.5	866.3	2.75	-0.67	-2.67
7,475.0	89.50	90.10	6,749.2	-235.4	886.5	897.3	5.41	-1.61	-5.16
7,505.0	89.60	90.20	6,749.5	-235.5	916.5	927.2	0.47	0.33	0.33
7,535.0	90.20	90.70	6,749.5	-235.7	946.5	957.2	2.60	2.00	1.67
7,565.0	90.20	89.80	6,749.4	-235.8	976.5	987.2	3.00	0.00	-3.00
7,595.0	89.80	88.70	6,749.4	-235.4	1,006.5	1,017.1	3.90	-1.33	-3.67

<b>Company:</b>	PETROLEUM DEVELOPMENT CORP Weld County CO	<b>Local Co-ordinate Reference:</b>	Well Maxey 24O-232
<b>Project:</b>	SEC.24-T5N-R65W	<b>TVD Reference:</b>	WELL @ 4651.0ft (RKB - 15')
<b>Site:</b>	Maxey 24O-HZ Pad Sec.24-T5N-R65W	<b>MD Reference:</b>	WELL @ 4651.0ft (RKB - 15')
<b>Well:</b>	Maxey 24O-232	<b>North Reference:</b>	True
<b>Wellbore:</b>	Wellbore #1	<b>Survey Calculation Method:</b>	Minimum Curvature
<b>Design:</b>	Wellbore #1	<b>Database:</b>	Landmark

Survey									
Measured Depth (ft)	Inclination (°)	Azimuth (°)	Vertical Depth (ft)	+N/-S (ft)	+E/-W (ft)	Vertical Section (ft)	Dogleg Rate (°/100ft)	Build Rate (°/100ft)	Turn Rate (°/100ft)
7,626.0	89.50	87.80	6,749.6	-234.5	1,037.4	1,048.0	3.06	-0.97	-2.90
7,656.0	89.80	88.20	6,749.8	-233.4	1,067.4	1,077.9	1.67	1.00	1.33
7,686.0	90.20	89.10	6,749.8	-232.7	1,097.4	1,107.8	3.28	1.33	3.00
7,716.0	90.20	90.40	6,749.7	-232.6	1,127.4	1,137.8	4.33	0.00	4.33
7,746.0	90.30	90.90	6,749.6	-232.9	1,157.4	1,167.7	1.70	0.33	1.67
7,776.0	90.20	90.80	6,749.4	-233.4	1,187.4	1,197.7	0.47	-0.33	-0.33
7,806.0	90.40	90.70	6,749.3	-233.8	1,217.4	1,227.7	0.75	0.67	-0.33
7,837.0	90.80	90.50	6,748.9	-234.1	1,248.4	1,258.7	1.44	1.29	-0.65
7,867.0	90.80	90.40	6,748.5	-234.3	1,278.4	1,288.6	0.33	0.00	-0.33
7,898.0	90.80	90.50	6,748.1	-234.6	1,309.4	1,319.6	0.32	0.00	0.32
7,929.0	91.30	90.30	6,747.5	-234.8	1,340.4	1,350.6	1.74	1.61	-0.65
7,961.0	91.40	90.10	6,746.8	-234.9	1,372.4	1,382.5	0.70	0.31	-0.63
7,992.0	91.90	89.60	6,745.9	-234.8	1,403.4	1,413.5	2.28	1.61	-1.61
8,024.0	92.60	89.70	6,744.6	-234.6	1,435.3	1,445.4	2.21	2.19	0.31
8,056.0	93.00	90.20	6,743.1	-234.6	1,467.3	1,477.3	2.00	1.25	1.56
8,087.0	92.20	89.60	6,741.7	-234.5	1,498.3	1,508.2	3.22	-2.58	-1.94
8,119.0	91.70	89.70	6,740.6	-234.3	1,530.2	1,540.2	1.59	-1.56	0.31
8,151.0	92.00	89.30	6,739.5	-234.1	1,562.2	1,572.1	1.56	0.94	-1.25
8,182.0	92.20	89.20	6,738.4	-233.7	1,593.2	1,603.0	0.72	0.65	-0.32
8,214.0	92.70	89.30	6,737.0	-233.2	1,625.2	1,634.9	1.59	1.56	0.31
8,246.0	92.40	87.80	6,735.6	-232.4	1,657.1	1,666.8	4.78	-0.94	-4.69
8,277.0	91.50	87.80	6,734.6	-231.2	1,688.1	1,697.6	2.90	-2.90	0.00
8,309.0	92.00	87.20	6,733.6	-229.9	1,720.0	1,729.5	2.44	1.56	-1.88
8,341.0	92.50	86.50	6,732.3	-228.1	1,752.0	1,761.3	2.69	1.56	-2.19
8,372.0	93.00	85.00	6,730.8	-225.8	1,782.8	1,792.0	5.10	1.61	-4.84
8,404.0	92.50	86.50	6,729.3	-223.4	1,814.7	1,823.7	4.94	-1.56	4.69
8,436.0	91.10	88.00	6,728.3	-221.9	1,846.7	1,855.5	6.41	-4.38	4.69
8,467.0	90.40	86.90	6,727.9	-220.5	1,877.6	1,886.4	4.21	-2.26	-3.55
8,498.0	90.20	86.40	6,727.7	-218.7	1,908.6	1,917.2	1.74	-0.65	-1.61
8,530.0	90.70	86.10	6,727.5	-216.6	1,940.5	1,949.0	1.82	1.56	-0.94
8,562.0	91.70	86.00	6,726.8	-214.4	1,972.4	1,980.8	3.14	3.13	-0.31
8,594.0	91.10	86.40	6,726.0	-212.3	2,004.3	2,012.5	2.25	-1.88	1.25
8,626.0	90.50	87.60	6,725.6	-210.6	2,036.3	2,044.4	4.19	-1.88	3.75
8,657.0	91.30	87.20	6,725.1	-209.2	2,067.3	2,075.2	2.89	2.58	-1.29
8,689.0	90.80	87.60	6,724.5	-207.8	2,099.2	2,107.1	2.00	-1.56	1.25
8,721.0	89.60	89.20	6,724.4	-206.9	2,131.2	2,139.0	6.25	-3.75	5.00
8,752.0	89.90	88.60	6,724.5	-206.3	2,162.2	2,169.9	2.16	0.97	-1.94
8,784.0	90.50	88.50	6,724.4	-205.5	2,194.2	2,201.8	1.90	1.88	-0.31
8,816.0	89.80	88.20	6,724.3	-204.5	2,226.2	2,233.7	2.38	-2.19	-0.94
8,847.0	89.30	89.10	6,724.6	-203.8	2,257.2	2,264.6	3.32	-1.61	2.90
8,879.0	89.80	88.40	6,724.8	-203.1	2,289.2	2,296.5	2.69	1.56	-2.19
8,911.0	89.50	89.50	6,725.0	-202.5	2,321.2	2,328.4	3.56	-0.94	3.44
8,943.0	89.10	90.50	6,725.4	-202.5	2,353.2	2,360.4	3.37	-1.25	3.13
8,974.0	89.50	90.00	6,725.8	-202.7	2,384.2	2,391.4	2.07	1.29	-1.61
9,006.0	88.90	90.50	6,726.2	-202.8	2,416.1	2,423.3	2.44	-1.88	1.56
9,038.0	88.30	91.70	6,727.0	-203.4	2,448.1	2,455.3	4.19	-1.88	3.75
9,069.0	88.80	91.30	6,727.8	-204.2	2,479.1	2,486.3	2.07	1.61	-1.29
9,101.0	88.80	91.30	6,728.5	-205.0	2,511.1	2,518.3	0.00	0.00	0.00
9,133.0	89.10	91.20	6,729.1	-205.6	2,543.1	2,550.2	0.99	0.94	-0.31
9,164.0	89.20	90.80	6,729.5	-206.2	2,574.1	2,581.2	1.33	0.32	-1.29
9,196.0	89.50	90.10	6,729.9	-206.4	2,606.1	2,613.2	2.38	0.94	-2.19
9,228.0	89.50	89.80	6,730.2	-206.4	2,638.1	2,645.1	0.94	0.00	-0.94
9,259.0	89.60	89.50	6,730.4	-206.2	2,669.1	2,676.1	1.02	0.32	-0.97

<b>Company:</b>	PETROLEUM DEVELOPMENT CORP Weld County CO	<b>Local Co-ordinate Reference:</b>	Well Maxey 240-232
<b>Project:</b>	SEC.24-T5N-R65W	<b>TVD Reference:</b>	WELL @ 4651.0ft (RKB - 15')
<b>Site:</b>	Maxey 240-HZ Pad Sec.24-T5N-R65W	<b>MD Reference:</b>	WELL @ 4651.0ft (RKB - 15')
<b>Well:</b>	Maxey 240-232	<b>North Reference:</b>	True
<b>Wellbore:</b>	Wellbore #1	<b>Survey Calculation Method:</b>	Minimum Curvature
<b>Design:</b>	Wellbore #1	<b>Database:</b>	Landmark

Survey									
Measured Depth (ft)	Inclination (°)	Azimuth (°)	Vertical Depth (ft)	+N/-S (ft)	+E/-W (ft)	Vertical Section (ft)	Dogleg Rate (°/100ft)	Build Rate (°/100ft)	Turn Rate (°/100ft)
9,291.0	89.70	88.30	6,730.6	-205.6	2,701.1	2,708.0	3.76	0.31	-3.75
9,323.0	89.80	88.60	6,730.7	-204.7	2,733.0	2,739.9	0.99	0.31	0.94
9,354.0	89.90	89.30	6,730.8	-204.2	2,764.0	2,770.8	2.28	0.32	2.26
9,386.0	90.40	89.90	6,730.7	-204.0	2,796.0	2,802.8	2.44	1.56	1.88
9,418.0	90.80	90.20	6,730.4	-204.0	2,828.0	2,834.7	1.56	1.25	0.94
9,450.0	91.10	90.10	6,729.9	-204.1	2,860.0	2,866.7	0.99	0.94	-0.31
9,481.0	91.50	89.60	6,729.2	-204.0	2,891.0	2,897.7	2.07	1.29	-1.61
9,513.0	91.70	89.30	6,728.3	-203.7	2,923.0	2,929.6	1.13	0.63	-0.94
9,545.0	92.00	89.10	6,727.2	-203.2	2,955.0	2,961.5	1.13	0.94	-0.63
9,576.0	91.50	89.30	6,726.3	-202.8	2,986.0	2,992.4	1.74	-1.61	0.65
9,608.0	91.10	90.70	6,725.6	-202.8	3,018.0	3,024.4	4.55	-1.25	4.38
9,640.0	91.40	90.60	6,724.9	-203.2	3,050.0	3,056.3	0.99	0.94	-0.31
9,671.0	91.80	90.60	6,724.0	-203.5	3,080.9	3,087.3	1.29	1.29	0.00
9,702.0	92.20	90.10	6,722.9	-203.7	3,111.9	3,118.2	2.06	1.29	-1.61
9,734.0	92.50	89.60	6,721.6	-203.6	3,143.9	3,150.2	1.82	0.94	-1.56
9,766.0	92.90	89.20	6,720.1	-203.3	3,175.9	3,182.1	1.77	1.25	-1.25
9,798.0	92.40	89.70	6,718.6	-202.9	3,207.8	3,214.0	2.21	-1.56	1.56
9,829.0	91.90	90.40	6,717.5	-203.0	3,238.8	3,244.9	2.77	-1.61	2.26
9,861.0	92.30	90.00	6,716.3	-203.1	3,270.8	3,276.9	1.77	1.25	-1.25
9,893.0	92.20	89.50	6,715.0	-202.9	3,302.8	3,308.8	1.59	-0.31	-1.56
9,924.0	92.20	88.90	6,713.8	-202.5	3,333.7	3,339.7	1.93	0.00	-1.94
9,956.0	92.40	88.80	6,712.6	-201.9	3,365.7	3,371.6	0.70	0.63	-0.31
9,988.0	92.70	88.00	6,711.1	-201.0	3,397.7	3,403.5	2.67	0.94	-2.50
10,020.0	92.30	88.10	6,709.7	-199.9	3,429.6	3,435.3	1.29	-1.25	0.31
10,051.0	91.00	88.20	6,708.8	-198.9	3,460.6	3,466.2	4.21	-4.19	0.32
10,083.0	90.50	88.50	6,708.4	-198.0	3,492.6	3,498.1	1.82	-1.56	0.94
10,115.0	90.10	88.40	6,708.3	-197.1	3,524.5	3,530.0	1.29	-1.25	-0.31
10,146.0	89.60	87.90	6,708.3	-196.1	3,555.5	3,560.9	2.28	-1.61	-1.61
10,178.0	89.80	87.20	6,708.5	-194.7	3,587.5	3,592.8	2.28	0.63	-2.19
10,210.0	89.50	87.30	6,708.7	-193.2	3,619.5	3,624.6	0.99	-0.94	0.31
10,241.0	87.80	87.80	6,709.4	-191.9	3,650.4	3,655.5	5.72	-5.48	1.61
10,273.0	87.30	87.70	6,710.8	-190.6	3,682.4	3,687.3	1.59	-1.56	-0.31
10,305.0	87.40	86.90	6,712.3	-189.1	3,714.3	3,719.1	2.52	0.31	-2.50
10,337.0	87.80	87.80	6,713.6	-187.6	3,746.2	3,750.9	3.08	1.25	2.81
10,368.0	88.20	88.70	6,714.7	-186.7	3,777.2	3,781.8	3.18	1.29	2.90
10,400.0	88.50	89.00	6,715.6	-186.0	3,809.2	3,813.7	1.33	0.94	0.94
10,432.0	88.90	89.30	6,716.3	-185.6	3,841.2	3,845.6	1.56	1.25	0.94
10,463.0	89.60	89.40	6,716.8	-185.2	3,872.2	3,876.6	2.28	2.26	0.32
10,495.0	89.80	89.60	6,716.9	-184.9	3,904.2	3,908.5	0.88	0.63	0.63
10,527.0	89.60	89.80	6,717.1	-184.8	3,936.2	3,940.5	0.88	-0.63	0.63
10,558.0	89.40	90.60	6,717.4	-184.9	3,967.2	3,971.4	2.66	-0.65	2.58
10,590.0	89.40	90.80	6,717.7	-185.3	3,999.2	4,003.4	0.62	0.00	0.63
10,622.0	89.30	91.60	6,718.1	-185.9	4,031.1	4,035.4	2.52	-0.31	2.50
10,653.0	89.30	91.40	6,718.4	-186.8	4,062.1	4,066.4	0.65	0.00	-0.65
10,685.0	89.50	91.10	6,718.8	-187.5	4,094.1	4,098.4	1.13	0.63	-0.94
10,717.0	89.90	90.60	6,718.9	-187.9	4,126.1	4,130.3	2.00	1.25	-1.56
10,748.0	90.10	90.70	6,718.9	-188.3	4,157.1	4,161.3	0.72	0.65	0.32
10,780.0	90.50	90.20	6,718.8	-188.5	4,189.1	4,193.3	2.00	1.25	-1.56
10,812.0	90.30	90.70	6,718.5	-188.8	4,221.1	4,225.3	1.68	-0.63	1.56
10,844.0	89.80	92.00	6,718.5	-189.5	4,253.1	4,257.2	4.35	-1.56	4.06
10,875.0	89.90	92.60	6,718.6	-190.8	4,284.1	4,288.2	1.96	0.32	1.94
10,907.0	90.20	93.20	6,718.6	-192.4	4,316.0	4,320.2	2.10	0.94	1.88
10,938.0	90.50	92.80	6,718.4	-194.0	4,347.0	4,351.2	1.61	0.97	-1.29
11,018.0	90.50	92.80	6,717.7	-197.9	4,426.9	4,431.2	0.00	0.00	0.00

<b>Company:</b>	PETROLEUM DEVELOPMENT CORP Weld County CO	<b>Local Co-ordinate Reference:</b>	Well Maxey 24O-232
<b>Project:</b>	SEC.24-T5N-R65W	<b>TVD Reference:</b>	WELL @ 4651.0ft (RKB - 15')
<b>Site:</b>	Maxey 24O-HZ Pad Sec.24-T5N-R65W	<b>MD Reference:</b>	WELL @ 4651.0ft (RKB - 15')
<b>Well:</b>	Maxey 24O-232	<b>North Reference:</b>	True
<b>Wellbore:</b>	Wellbore #1	<b>Survey Calculation Method:</b>	Minimum Curvature
<b>Design:</b>	Wellbore #1	<b>Database:</b>	Landmark

Survey									
Measured Depth (ft)	Inclination (°)	Azimuth (°)	Vertical Depth (ft)	+N/-S (ft)	+E/-W (ft)	Vertical Section (ft)	Dogleg Rate (°/100ft)	Build Rate (°/100ft)	Turn Rate (°/100ft)
BHL 2140'FSL & 2081'FWL, SEC.19									

Checked By: \_\_\_\_\_ Approved By: \_\_\_\_\_ Date: \_\_\_\_\_