



Scale: 5" / 100'
Measured Depth Log

Well Name Raindance FD 20-362HNX

Location NENE SEC 30 T6N R67W

State COLORADO

County WELD

Country USA

Rig Number PRECISION 460

API Number 05-123-44987-0000

AFE # 17DC0067

Geographic Region DJ BASIN

Field WATTENBERG

Spud Date 8/23/2017

Drilling Completed 8/25/2017

Ground Elevation 4789'

K.B. Elevation 4809'

Logged Interval 6000 To 12167'

Total Depth 12167'

Formation NIOBRARA A CHALK

Type of Drilling Fluid OIL BASED MUD

Operator

Company Great Western Oil and Gas

Address 1801 Broadway, Ste 500
Denver, CO 80202



Geologist

Name Gabriel Rubio & Sage Betts

Company Terra Guidance

Address 1298 O Road
Loma CO 81524
(970) 260-5408



Color Coding

Oil

Note

Error

Condensate

Core

Water

Gas

Pressure

Seal

Rock Types

LIMESTONE

Chalk

Marl

SHALE

Silty Shale

Shaly Siltstone

SILTSTONE

Shaly Sandston

SANDSTONE

BENTONITE

CEMENT

UNKNOWN

ANHYDRITE

GYPSUM

SALT

SIDERITE or LIMONITE

DOLOMITE

CHERT

COAL

MARLSTONE

CLAYSTONE

SHALE GRAY

SHALE COLORED

CONGLOMERATE

BRECCIA

TILL

TUFF

IGNEOUS

METAMORPHIC

Accessories

F FOSSIL

GASTROPOD

OOLITE

OSTRACOD

PELECYPOD

PELLET

PISOLUTE

PLANT REMAINS

SCAPHOPOD

STROMATOPOROID

FISH

FORAMINIFERA

ARGILLACEOUS

ARGILLITE GRAIN

B BENTONITE

BITUMINOUS SUBSTANCE

BRECCIA FRAGMENTS

CALCAREOUS

CARBONACEOUS FLAKES

CHTDK

CHTLT

COAL - THIN BEDS

DOLOMITIC

+ FELDSPAR

FERRUGINOUS PELLET

FERRUGINOUS

GLAUCONITE

GYPSIFEROUS

H HEAVY MINERAL

K KAOLIN

M MARLSTONE

MINERAL CRYSTALS

N NODULES

PHOSPHATE PELLETS

P PYRITE

SALT CAST

SANDY

SILICEOUS

SILTY

TUFFACEOUS

Stringer

ANHYDRITE STRINGER

BENTONITE STRINGER

COAL STRINGER

DOLOMITE STRINGER

GYPSUM STRINGER

LIMESTONE STRINGER

MARLSTONE (CALC) STRG

MARLSTONE (DOL) STRG

SANDSTONE STRINGER

SHALE STRINGER

SILTSTONE STRINGER

Other Sy

ORGANIC

P PINPOINT

D DEAD

V VUGGY

EVEN

QUESTIONABLE

SPOTTED STAINING

GAS

GAS SH

MINDEPTH

NORMA

OIL SH

OVERT

REVERS

Engineering

CASING

REVERS

OVERT

Porosity

CONNECTION (LEFT)

SIDEWA

CONNECTION (RIGHT)

SIDEWA

FENESTRAL

CONNECTION GAS

SLIDE

FRACTURE

CORE - LOST

SURV

INTERCRYSTALLINE

CORE - RECOVERED

TRIP

INTEROOLITIC

DST INTERVAL

WIRELIN

MOLDIC

FAULT

WIRELIN

E EARTHY

CONNECTION (RIGHT)

SIDEWA

FENESTRAL

CONNECTION GAS

SLIDE

FRACTURE

CORE - LOST

SURV

INTERCRYSTALLINE

CORE - RECOVERED

TRIP

INTEROOLITIC

DST INTERVAL

WIRELIN

MOLDIC

FAULT

WIRELIN

ymbols

FORMATION TOP L LITHOGRAPHIC

Rounding

LOW MX MICROXLN

MIN DEPTH AN ANGULAR MS MUDSTONE

FL FAULT R ROUNDED PS PACKSTONE

DW SUBANG WS WACKESTONE

TURNED STRATA R SUBRND

Sorting

SE FAULT

Textures

ALL CORE (LEFT) M MODERATE

ALL CORE (RIGHT) BS BOUNDSTONE P POOR

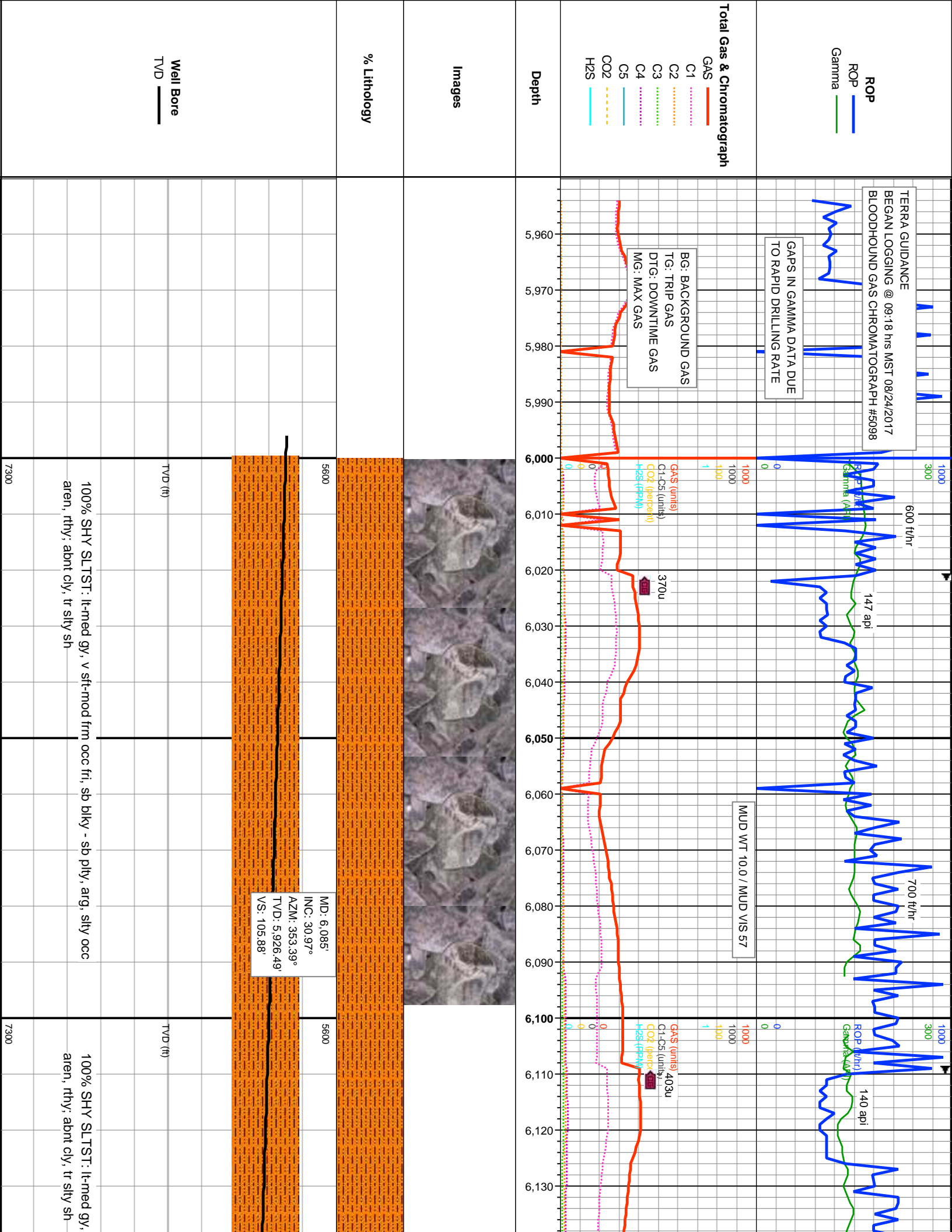
C CHALKY W WELL

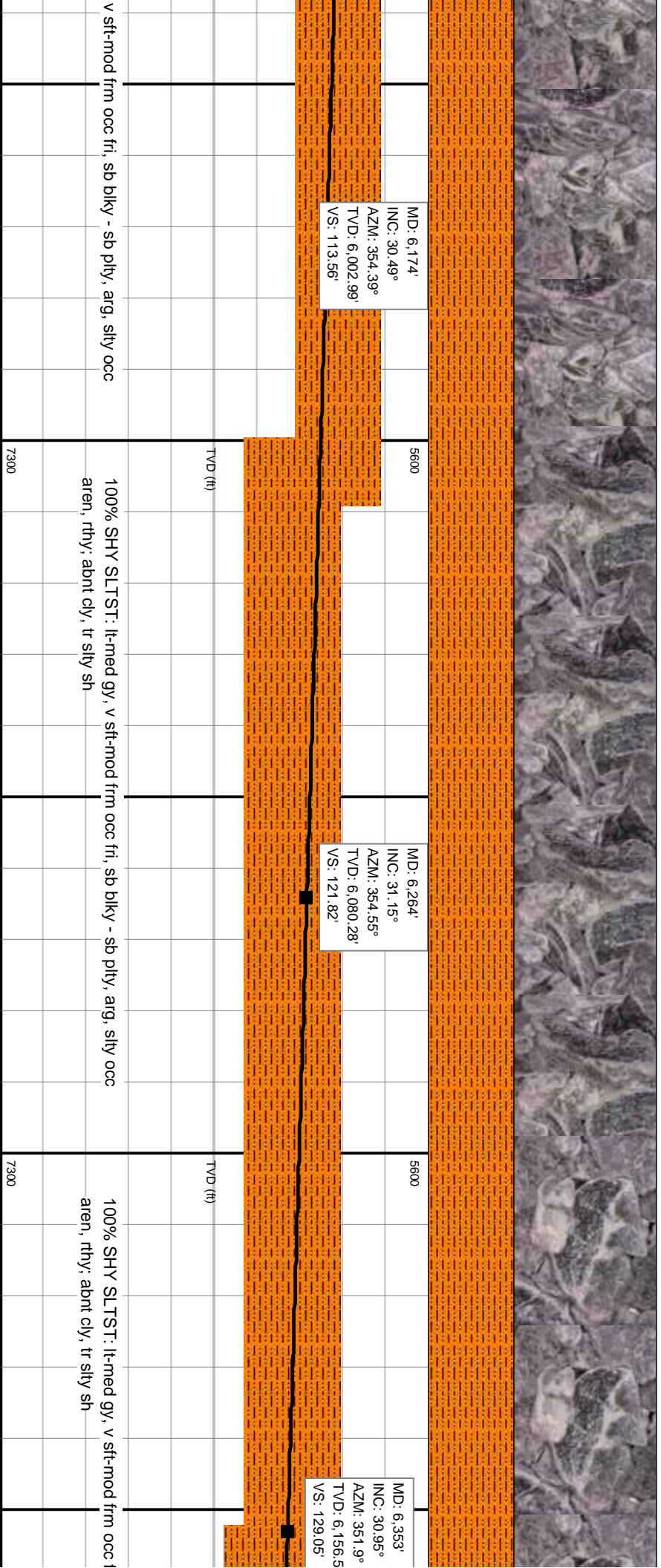
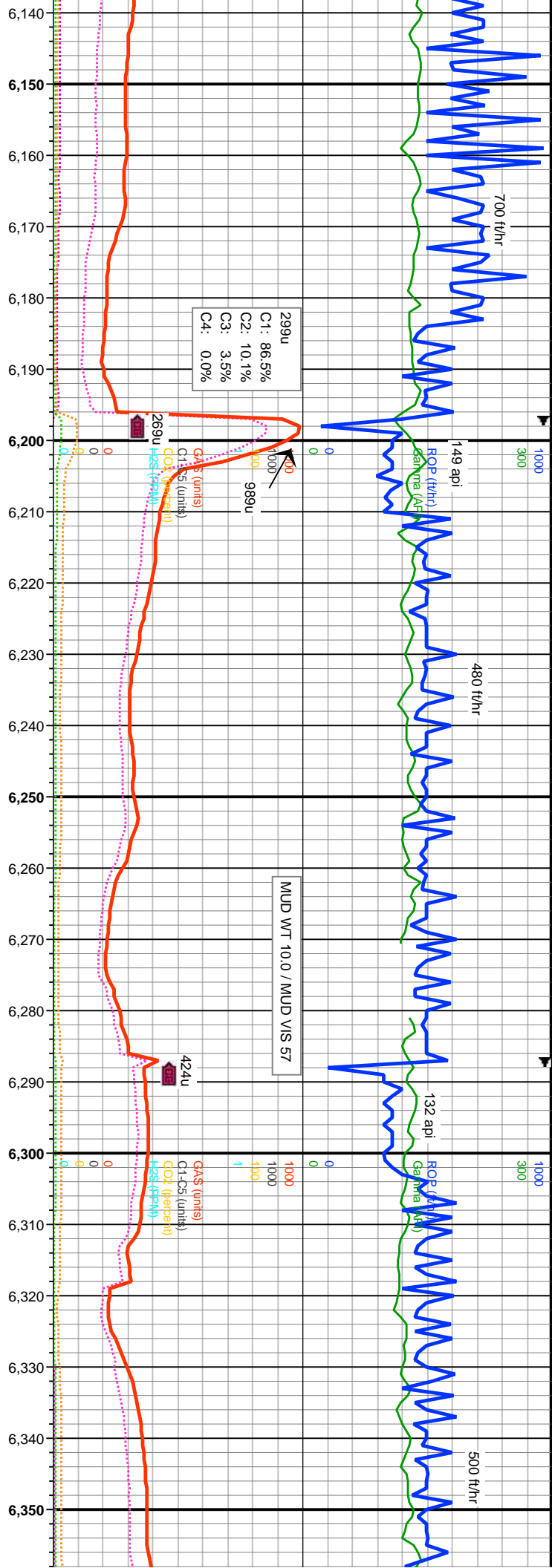
CX CRYPTOXLN

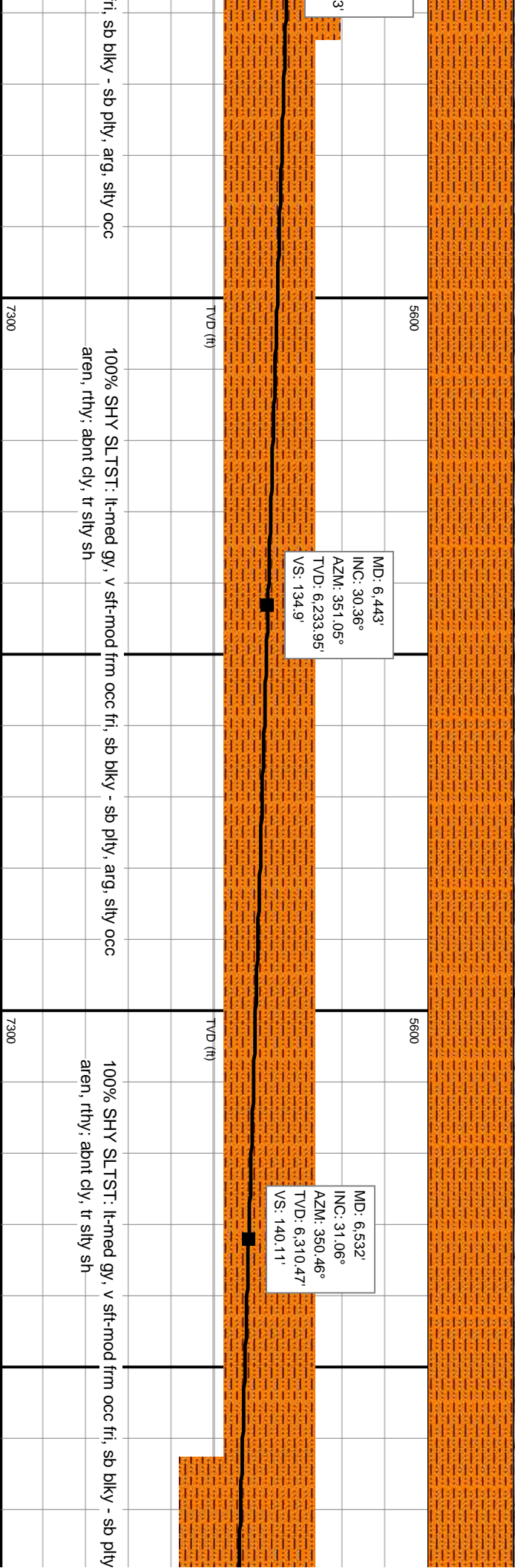
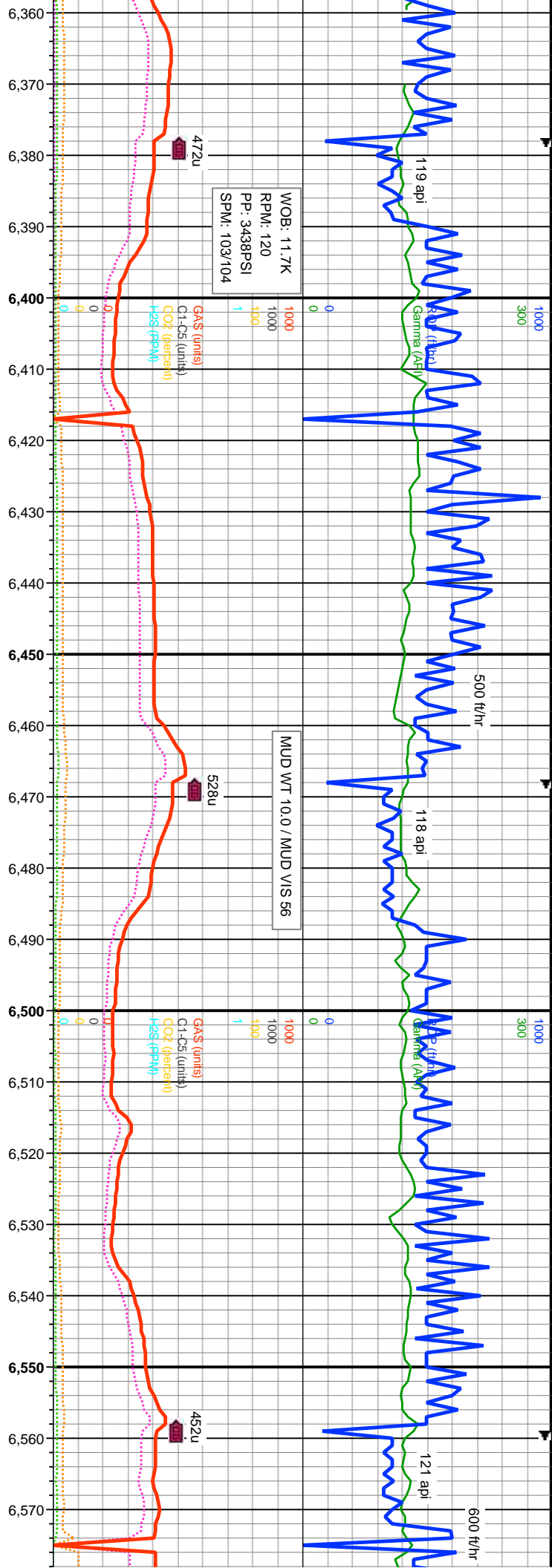
E EARTHY

NE TESTED - LEFT FX FINELYXLN

NE TESTED - RT GS GRAINSTONE







ti, sb blkly - sb plty, arg, silty occ

100% SHY SLTST: lt-med gy, v sft-mod frm occ fri, sb blkly - sb plty, arg, silty occ

aren, rthy; abnt cly, tr silty sh

100% SHY SLTST: lt-med gy, v sft-mod frm occ fri, sb blkly - sb plty

aren, rthy; abnt cly, tr silty sh

