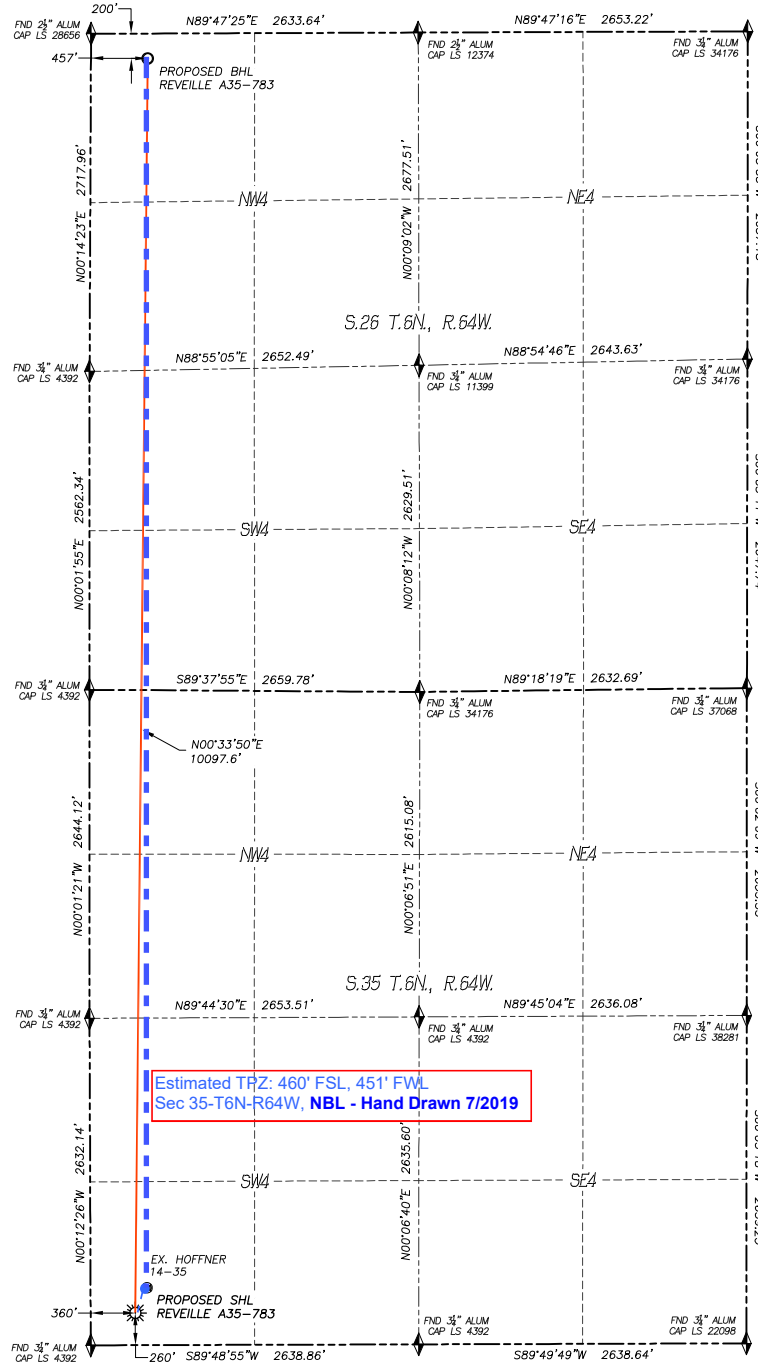


# WELL LOCATION CERTIFICATE

REVEILLE A35-783

SECTION 35, TOWNSHIP 6 NORTH, RANGE 64 WEST OF THE 6TH P.M.



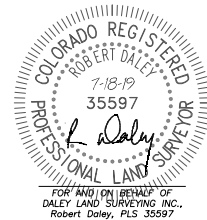
**APPROVED**  
By Cory at 4:36 pm, Jul 29, 2019

IN ACCORDANCE WITH A REQUEST FROM GREG WILSON OF NOBLE ENERGY INC., DALEY LAND SURVEYING, INC. HAS DETERMINED THE SURFACE LOCATION OF THE REVEILLE A35-783 WELL TO BE 260' FSL, 360' FWL, AS MEASURED AT NINETY (90) DEGREES FROM THE SECTION LINES OF SECTION 35, TOWNSHIP 6 NORTH, RANGE 64 WEST AND THE BOTTOM HOLE LOCATION TO BE 200' FNL, 457' FWL, AS MEASURED AT NINETY (90) DEGREES FROM THE SECTION LINES OF SECTION 26, TOWNSHIP 6 NORTH, RANGE 64 WEST, OF THE 6TH PRINCIPAL MERIDIAN, WELD COUNTY, COLORADO.

I HEREBY STATE THAT THIS WELL LOCATION CERTIFICATE WAS PREPARED BY ME OR UNDER MY DIRECT SUPERVISION, THAT THE WORK WAS COMPLETED ON 4/18/2019 FOR AND ON BEHALF OF NOBLE ENERGY, INC., AND THAT THIS MAP DOES NOT REPRESENT A BOUNDARY SURVEY, IT IS NOT A LAND SURVEY PLAT OR AN IMPROVEMENT SURVEY PLAT AND IT IS NOT TO BE RELIED UPON FOR THE ESTABLISHMENT OF FENCE, BUILDING OR OTHER FUTURE IMPROVEMENT LINES.

## NOTES:

- 1) BEARINGS FOR THIS MAP ARE ASSUMED AND BASED UPON GPS OBSERVATIONS MADE BETWEEN MONUMENTS LOCATED AT THE SOUTHWEST CORNER AND SOUTH QUARTER CORNER OF SECTION 35, T.6N., R.64W.
- 2) HORIZONTAL DATUM IS NAD83.
- 3) VERTICAL DATUM IS NAVD88 AND ORIGINATES FROM THE LOCAL C.O.R.S. NETWORK, UTILIZING THE GEOID12A MODEL.
- 4) SEE LOCATION DRAWING FOR VISIBLE IMPROVEMENTS WITHIN 500' OF PROPOSED DISTURBED AREA.
- 5) SURFACE USE: AGRICULTURAL.
- 6) INST. OPERATOR: SCOTT ESTABROOKS.
- 7) NEAREST WELL: 224'± NE. - HOFFNER 14-35



## NAD 83 LATITUDE AND LONGITUDE

SURFACE LOCATION:		BOTTOM HOLE:	
LATITUDE:	N40.43633°	LATITUDE:	N40.46404°
LONGITUDE:	W104.52548°	LONGITUDE:	W104.52513°
ELEV:	4649'		
PDOP:	1.2		
QTR/QTR:	SW4/SW4		

**LEGEND**

- FOUND MONUMENT AS DESCRIBED
- PROPOSED WELL
- EXISTING WELL
- BOTTOM HOLE
- ABANDONED WELL
- CALCULATED POSITION

SCALE: 1" = 1000'

