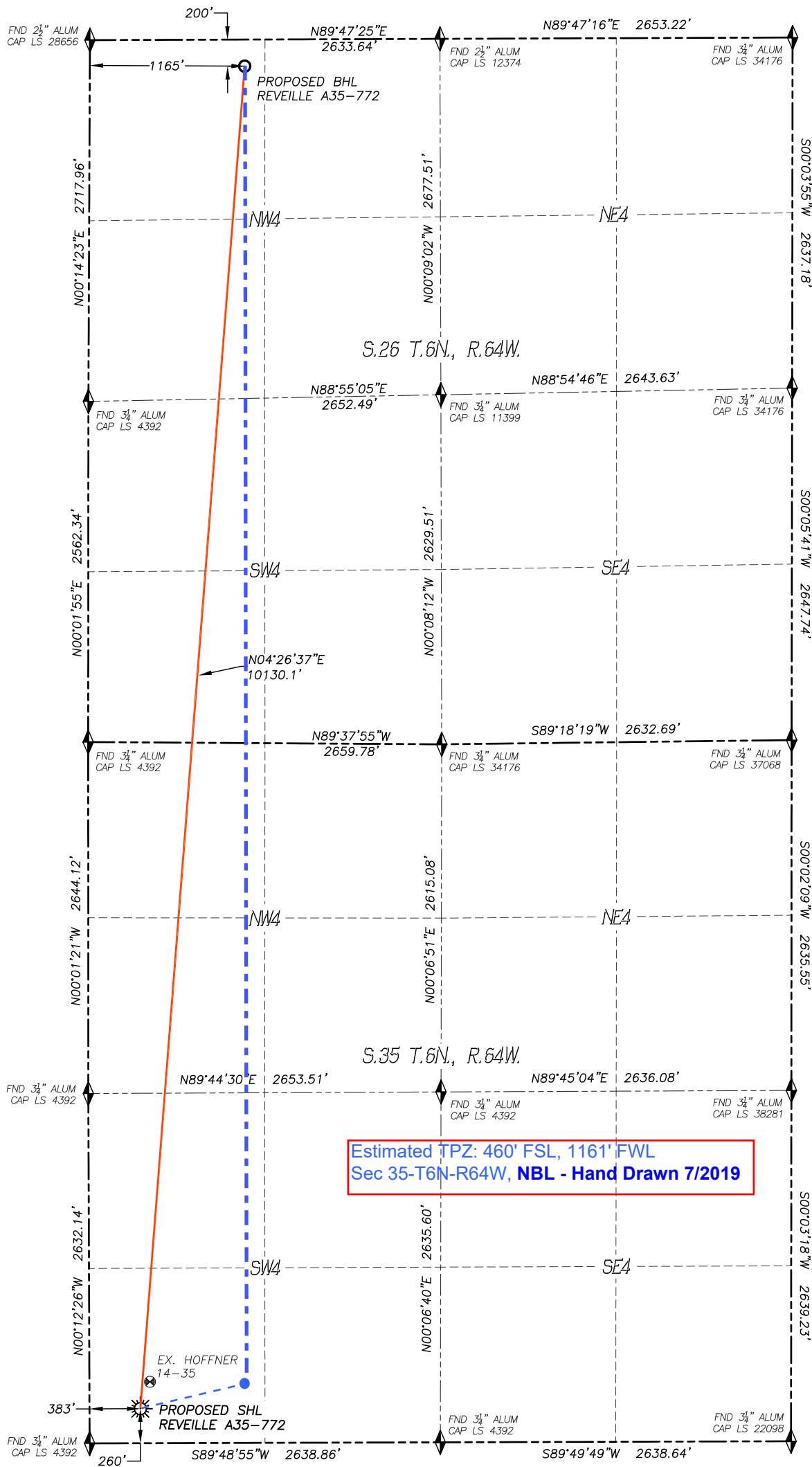


WELL LOCATION CERTIFICATE  
REVEILLE A35-772

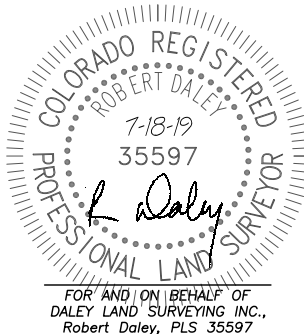
SECTION 35, TOWNSHIP 6 NORTH, RANGE 64 WEST OF THE 6TH P.M.



IN ACCORDANCE WITH A REQUEST FROM GREG WILSON OF NOBLE ENERGY INC., DALEY LAND SURVEYING, INC. HAS DETERMINED THE SURFACE LOCATION OF THE REVEILLE A35-772 WELL TO BE 260' FSL, 383' FWL, AS MEASURED AT NINETY (90) DEGREES FROM THE SECTION LINES OF SECTION 35, TOWNSHIP 6 NORTH, RANGE 64 WEST AND THE BOTTOM HOLE LOCATION TO BE 200' FNL, 1165' FWL, AS MEASURED AT NINETY (90) DEGREES FROM THE SECTION LINES OF SECTION 26, TOWNSHIP 6 NORTH, RANGE 64 WEST, OF THE 6TH PRINCIPAL MERIDIAN, WELD COUNTY, COLORADO.

I HEREBY STATE THAT THIS WELL LOCATION CERTIFICATE WAS PREPARED BY ME OR UNDER MY DIRECT SUPERVISION, THAT THE WORK WAS COMPLETED ON 4/18/2019 FOR AND ON BEHALF OF NOBLE ENERGY, INC., AND THAT THIS MAP DOES NOT REPRESENT A BOUNDARY SURVEY, IT IS NOT A LAND SURVEY PLAT OR AN IMPROVEMENT SURVEY PLAT AND IT IS NOT TO BE RELIED UPON FOR THE ESTABLISHMENT OF FENCE, BUILDING OR OTHER FUTURE IMPROVEMENT LINES.

- NOTES:**
- 1) BEARINGS FOR THIS MAP ARE ASSUMED AND BASED UPON GPS OBSERVATIONS MADE BETWEEN MONUMENTS LOCATED AT THE SOUTHWEST CORNER AND WEST QUARTER CORNER OF SECTION 35, T.6N., R.64W.
  - 2) HORIZONTAL DATUM IS NAD83.
  - 3) VERTICAL DATUM IS NAVD88 AND ORIGINATES FROM THE LOCAL C.O.R.S. NETWORK, UTILIZING THE GEOID12A MODEL.
  - 4) SEE LOCATION DRAWING FOR VISIBLE IMPROVEMENTS WITHIN 500' OF PROPOSED DISTURBED AREA.
  - 5) SURFACE USE: AGRICULTURAL.
  - 6) INST. OPERATOR: SCOTT ESTABROOKS.
  - 7) NEAREST WELL: 215'± NE. - HOFFNER 14-35



NAD 83 LATITUDE AND LONGITUDE			
SURFACE LOCATION:		BOTTOM HOLE:	
LATITUDE:	N40.43633°	LATITUDE:	N40.46405°
LONGITUDE:	W104.52540°	LONGITUDE:	W104.52259°
ELEV:	4648'		
PDOP:	1.3		
QTR/QTR:	SW4/SW4		

- LEGEND**
- FOUND MONUMENT AS DESCRIBED
  - PROPOSED WELL
  - EXISTING WELL
  - BOTTOM HOLE
  - ABANDONED WELL
  - CALCULATED POSITION

