

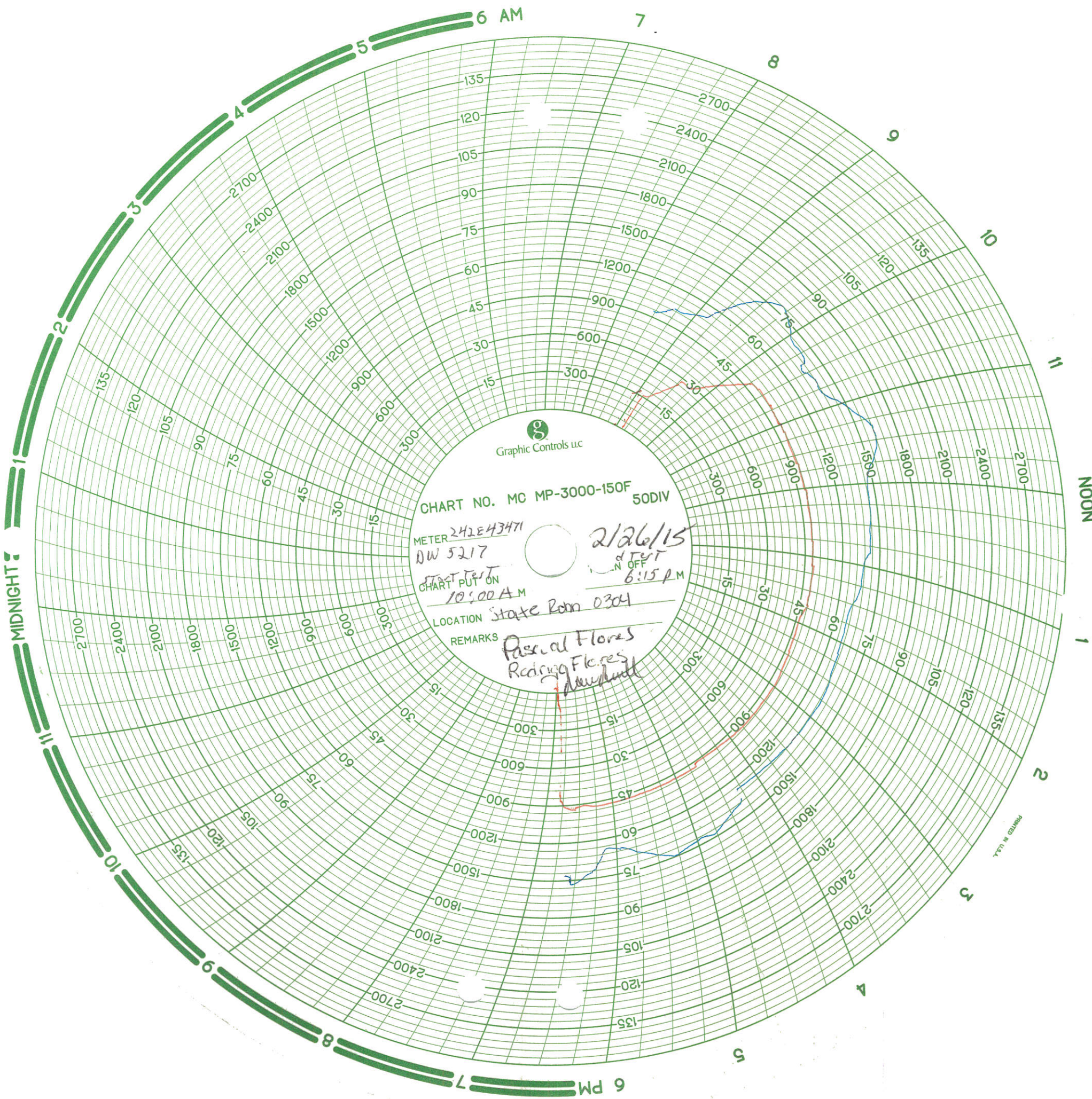
Noble Energy Test Report

Line size		Location		
638.8'		Rohn State 20 3/4 Lact unit oil line connect		
Diameter	Wall Thickness	Grade pipe	Design Pressure	Preliminary Pressure
6 5/8"	.280	X-52		930 lbs
Location Class	Construction Type	MAOP	Required Test Pressure	
	B31.4			
OTHER				
925 psig min 975 psig Max				
From Station				
To Station				
Test Started			Test Completed	
10:00 am			6:15 pm	
Weather				
Windy, Snowing, Cold				
Ambient Temp-Start			Ambient Temp-End	
13°			15°	
Dead Weight Location and Elevation				
on level site				
Test Medium Nitrogen			Date Taken By	
			2/26/15	
Deat Weight SR	Cal Date	Chart Recorder	Call Date	
5217	12-16-2015	Don'ton 242E-43471	12-04-2015	
Deat Weight SR	Call Date	Chart Recorder	Call date	
Remarks				
Pasqual Flores & Rodrigo Flores performing test for Shannon Pipeline.				
Joe Mull				

DEAD WEIGHT PRESSURE LOG

TIME	Pressure	Ambient Temp	Time Pressure	Ambient Temp
10:00	930	130		
10:15	930	130		
10:30	930	130		
10:45	930	130		
11:00	930	120		
11:15	930	130		
11:30	930	140		
11:45	930	140		
12:00	930	150		
12:15	930	150		
12:30	930	150		
12:45	930	150		
1:00	930	150		
1:15	930	170		
1:30	930	170		
1:45	930	180		
2:00	930	180		
2:15	930	140		
2:30	930	190		
2:45	930	180		
3:00	930	180		
3:15	930	180		
3:30	930	180		
3:45	930	190		
4:00	930	190		
4:15	930	180		
4:30	930	180		
4:45	930	180		
5:00	930	170		
5:15	930	150		
5:30	930	160		
5:45	930	150		
6:00	930	150		
6:15	130	150		

Parcel 2A 2/26/15
Parcel 2B 2/26/15



GRAPHIC CONTROLS LLC

CHART NO. MC MP-3000-150F 50DIV

METER 242E43471
DW 5217

START TEST ON
10:00 AM

LOCATION

State Room 0304

REMARKS

Pascal Flores
Rising Flores
Anemometer

2/26/15
OFF
6:15 PM

PRINTED IN U.S.A.

#1

PSS-COMPANIES



2070 South 4250 West - Salt Lake City, Utah 84104 - Phone (801) 363-1933 - Fax (801) 531-9548

CALIBRATION CERTIFICATE

CERTIFICATE NUMBER: UT 121714-3

Details+/-: 0.05% ACCURACY

DATE CALIBRATED: 12-16-2014

DUE DATE: 12-16-2015

INDICATED PRESSURE RANGE: # 50 - 3,000 PSI

SERIAL NO: 5217

MANUFACTURER: REFINERY SUPPLY COMPANY

PRESSURE INSTRUMENT: # 50 - 3,000 PSI / BRASS DEADWEIGHT

INSTRUMENT FINDINGS/STATUS: UNIT IS IN TOLERANCE/ INSTRUMENT MEETS OR EXCEEDS SPECIFICATIONS.

BASED ON INTERNATIONAL STANDARDS OF GRAVITY: (980.665 cm./sq.).

BASED ON CLAIBRATED PISTON AREA: (0.3969154 cm./sq.) (0.061522 cm./sq.)

TYPE OF STANDARD USED TO CALIBRATE: CHANDLER DEADWEIGHT TEST
UNIT SPT. (55-100-B) SERIAL No. 25985; CALIBRATION DATE: MAY 07, 2014

**ALL STANDARD DIRECTLY TRACEABLE TO NATIONAL INSTITUTE OF
STANDARDS & TECHNOLOGIES TEST NO:** (N.I.S.T.) 2.6/172490 & 6.6/139577.
CALCULATED USING MASS VALUES, AREA, A₀, AND STATED GRAVITY.

ROOM TEMPERATURE/HUMIDITY (AT TIME OF TEST): 77°F (25°C)/ 40%

CALIBRATED BY: TYLER HALL

A handwritten signature in blue ink, appearing to read 'Tyler Hall', written over a horizontal line.

SIGNATURE

Unit # 2

PSS-COMPANIES



2070 South 4250 West - Salt Lake City, Utah 84104 - Phone (801) 363-1933 - Fax (801) 531-9548

CALIBRATION CERTIFICATE

CERTIFICATE NUMBER: UT 12414-1

Details +/-: 0.05% ACCURACY

DATE CALIBRATED: 12-04-2014

DUE DATE: 12-04-2015

INDICATED TEMPERATURE RANGE: # 0 - 150°F

INDICATED PRESSURE RANGE: # 0 - 3,000 PSI

SERIAL NO: 242E - 43471

MANUFACTURER: ITT BARTON / 12" CHART RECORDER

TYPE OF INSTRUMENT CALIBRATED: TEMPERATURE / PRESSURE RECORDER /

INSTRUMENT FINDINGS/STATUS: UNIT IS IN TOLERANCE/ INSTRUMENT MEETS OR EXCEEDS SPECIFICATIONS.

BASED ON INTERNATIONAL STANDARDS OF GRAVITY: (980.665 cm./sq.).

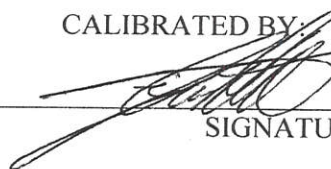
BASED ON CALIBRATED PISTON AREA: (0.3969154 cm./sq.) (0.061522 cm./sq.).

TYPE OF STANDARD USED TO CALIBRATE: CHANDLER DEADWEIGHT TEST UNIT SPT.
(55-100-B) SERIAL No. 25985; KESSLER TEST THERMOMETERS; SERIAL NO. 87B2276 &
403751. CALIBRATION DATE: MAY 07, 2014

ALL STANDARD DIRECTLY TRACEABLE TO NATIONAL INSTITUTE OF STANDARDS & TECHNOLOGIES TEST NO: (N.I.S.T.) 2.6/172490 & 6.6/139577.

CALCULATED USING MASS VALUES, AREA, AO, AND STATED GRAVITY.
ROOM TEMPERATURE/HUMIDITY (AT TIME OF TEST): 77°F (25°C)/ 40%.

CALIBRATED BY: TYLER HALL


SIGNATURE