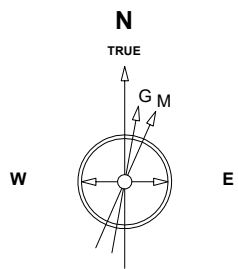


Great Western Operating Company, LLC

Location Colorado
Field Wattenburg
Installation Brant
Slot N04 - Brant LE 08-159HC
Well Brant LE 08-159HC
Wellbore Brant LE 08-159HC-ST01

Created by mmount
 Date plotted 5-Jan-2020
 Plot reference is Brant LE 08-159HC-ST01.
 Ref wellpath is Sidetrack 01.
 Coordinates are in Feet reference N04 - Brant LE 08-159HC.
 True Vertical Depths are reference Rig Datum.
 Measured Depths are reference Rig Datum.
 Rig Datum: Planned Datum #1
 Rig Datum to Mean Sea Level: 4993.00 ft.
 Plot North is aligned to TRUE North.



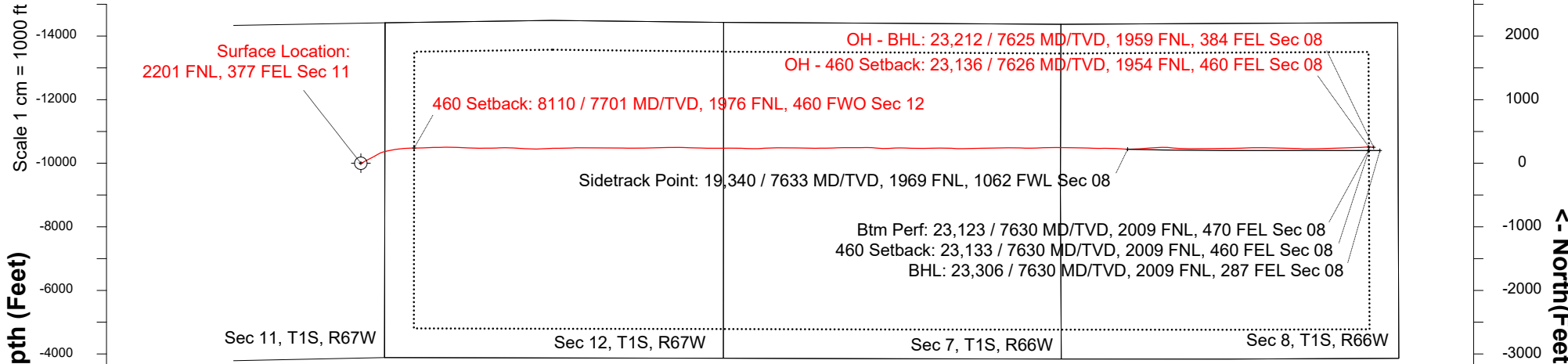
Scale 1 cm = 500 ft

East (Feet) ->

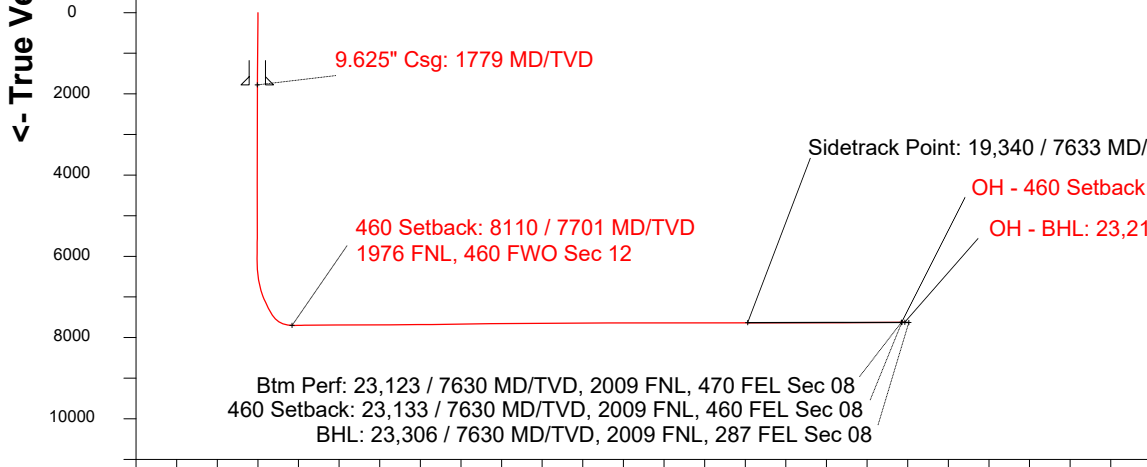
-2000 -1000 0 1000 2000 3000 4000 5000 6000 7000 8000 9000 10000 11000 12000 13000 14000 15000 16000 17000

Apr-14-2017
 IGRF-12 Dip: 66.51 deg Field: 52184.0 nT
 Lat: N39 58 49.6308 Long: W104 50 52.8488 Elev: 4973.00 ft
 Magnetic North is 8.24 deg East of TRUE North
 To correct azimuth from Magnetic to TRUE add 8.24 deg

Scale 1 cm = 1000 ft



Scale 1 cm = 500 ft



WELL PROFILE DATA

Point	MD	Inc	Azi	TVD	North	East	deg/100ft	V. Sect
Tie on	19340.00	89.82	92.43	7632.54	N 222.15	E 12060.87		12062.71
End of Build/Turn	19740.00	90.22	90.94	7632.40	N 210.39	E 12460.69	0.39	12462.34
End of Drop/Turn	20939.74	90.00	90.02	7630.07	N 200.39	E 13660.37	0.08	13661.81
T.D. & End of Turn	23306.00	90.00	90.02	7630.07	N 199.65	E 16026.63	0.00	16027.87
T.D. & Target BH	23306.00	90.00	90.02	7630.07	N 199.65	E 16026.63	0.00	16027.87

Scale 1 cm = 1000 ft

Vertical Section (Feet) ->

Azimuth 89.29 with reference 0.00 N, 0.00 E from N04 - Brant LE 08-159HC