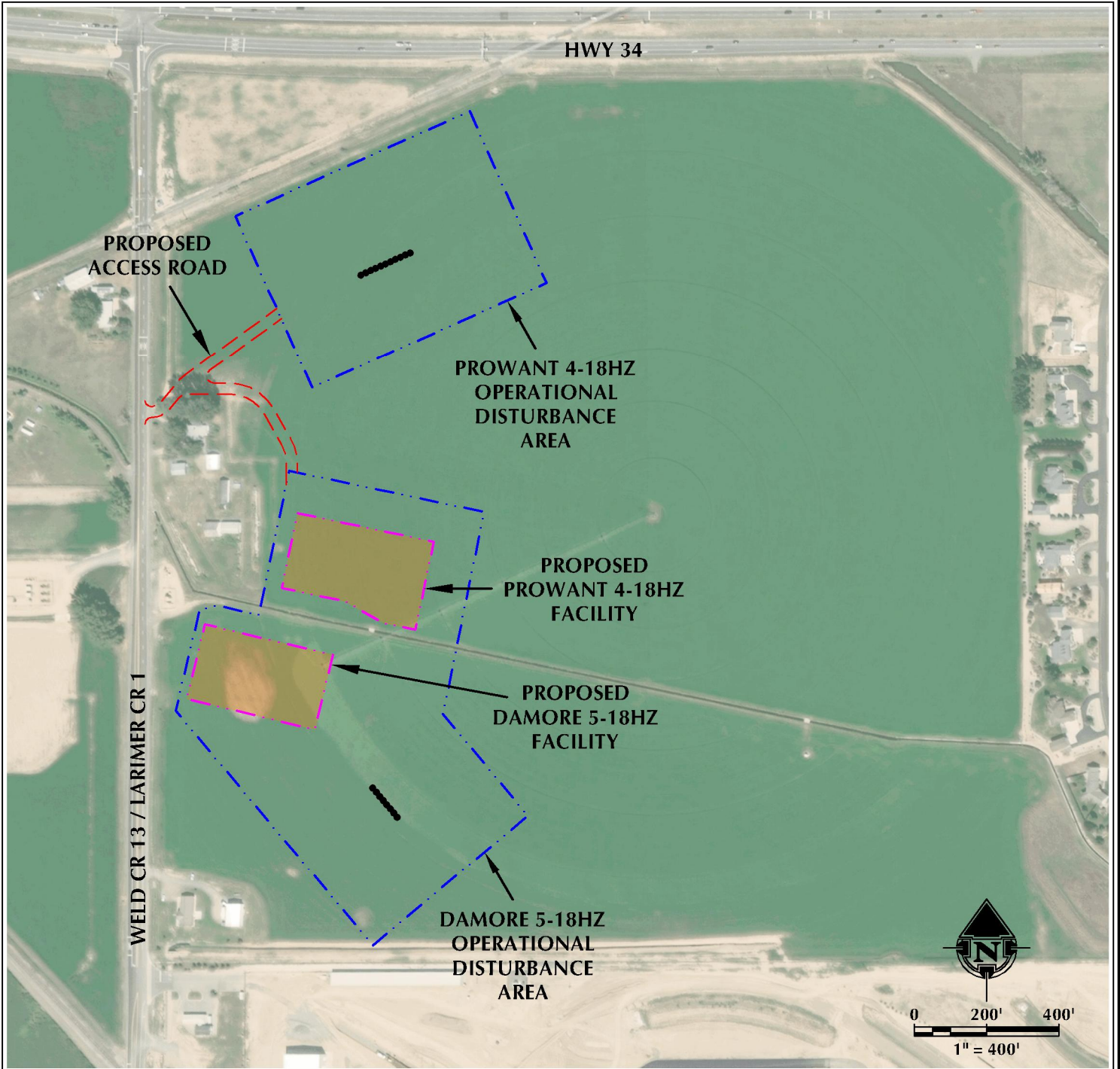


PROWANT 4-18HZ ACCESS MAP

W1/2 NW1/4 SECTION 18, TOWNSHIP 5 NORTH, RANGE 67 WEST, 6TH P.M.



LEGEND

- PROPOSED WELL
- - - ACCESS
- - - - - DISTURBANCE AREA
- PROPOSED FACILITY

INTERSECTION OF ACCESS ROAD
AND WELD CR 13 / LARIMER CR 1
LATITUDE: 40.403880°
LONGITUDE: -104.944584°

K:\MAPS\2016\2016_54_PROWANT_TSN_187W_SEC_18\DWG\PROWANT.DWG_1/3/2016 8:26:45 AM.steven



609 CONSULTING, LLC
LOVELAND OFFICE
6706 North Franklin Avenue
Loveland, Colorado 80538
Phone: 970-776-4331

SHERIDAN OFFICE
1095 Saberton Avenue
Sheridan, Wyoming 82801
Phone: 307-674-0609

DATE SURVEYED: 9/7/18
DATE: 10/11/18
DRAFTER: DJD
REVISED: 1/3/20

DATA SOURCES:
- AERIAL COURTESY OF ESRI, INC.

PREPARED FOR:

Kerr-McGee Oil & Gas Onshore L.P.