



January 7, 2020

Ms. Kate Graves  
Sr. HSE Representative  
Kerr-McGee Oil & Gas Onshore LP  
501 N Division Blvd.  
Platteville, Colorado 80651

**RE: Colorado Oil & Gas Conservation Commission (COGCC)  
Vegetation Assessment Report (Interim Reclamation Completion Notice)  
Markham 13-8 (318671)  
Kerr-McGee Oil & Gas Onshore LP (Operator: 47120)**

Dear Ms. Graves:

Apex Companies, LLC (Apex) is presenting this letter to Kerr-McGee Oil & Gas Onshore LP (Kerr-McGee) documenting the results of a vegetation assessment that demonstrates successful completion of interim reclamation efforts, per COGCC Rule 1003, on the above-referenced location. Attached is a topographic location map and site map with additional location information.

Based on site visits and the completed vegetation assessment, Apex inspectors confirmed that the drilling and construction footprint has been reduced, recontoured, and seeded with a mixture consistent with species composition and reseeding practices common to the area.

On September 3, 2019, modified step-point vegetation surveys were conducted on the reclaimed portion of the well pad, and on adjacent reference areas. Foliar and basal cover, along with non-vegetated and noxious weed occurrences, were documented; 100 survey points were recorded within the reclaimed disturbance and 100 survey points were recorded within the reference area. Vegetation survey points were identified using a bullseye target tool. The survey methodology employed by Apex is based on the *step-point method* described in an interagency technical reference published by the Bureau of Land Management (BLM, 1996).

Noxious weeds listed by the Colorado Department of Agriculture were excluded from the percent of reference vegetative coverage calculations, per COGCC Rule 1003.e (2). Noxious weed occurrences identified in the reclaimed portion of this location are Noxious Weed List C, *Convolvulus arvensis*. To ensure reclamation vegetative composition meets the standards of Kerr-McGee and the COGCC, undesirable cover is also quantified in the attached Summary of Field Data. Undesirable cover includes species identified by the United States Department of Agriculture (USDA) Natural Resource Conservation Service (NRCS) as introduced and not native to the lower 48 states, and not considered beneficial for reclamation purposes.

Survey results indicate the reclaimed area has a foliar vegetative cover that is 102.6% of the reference area. Vegetation survey results are provided in the attached survey summary table and data sheets. Based on the results of the survey, interim reclamation, as defined by COGCC Rule 1003.e (2), has been achieved. Photographs required by COGCC Rule 1003.e (3) are also attached along with the site map illustrating vegetation survey photo points and transect locations.

Apex appreciates the opportunity to provide environmental consulting services on this project. Should you have any questions or require additional information, please do not hesitate to contact me.

Sincerely,  
**Apex Companies, LLC**



Adam Roll  
Environmental Scientist  
970-589-6111  
[Adam.Roll@apexcos.com](mailto:Adam.Roll@apexcos.com)

**Attachments:**

1. Vegetation Survey - Summary of Field Data
2. Topographic Location Map
3. Vegetation Survey Site Map
4. Vegetation Assessment Photo Log
5. Vegetation Survey (Field Data Tables)

**Reference:**

United States (U.S.) Department of Agriculture (USDA), Forest Service (USFS), Natural Resource Conservation Service (NRCS) and U.S. Department of the Interior (USDOI) Bureau of Land Management (BLM). "Sampling Vegetation Attributes, Interagency Technical Reference, 1996 (Revised in 1997, and 1999)". USDOI BLM Technical References #1734-4.  
Date Accessed: 2 August, 2017

## Vegetation Survey - Summary of Field Data

<b>Client</b>	Kerr-McGee
<b>COGCC Location Name (ID)</b>	MARKHAM 13-8 (318671)
<b>Assessment Date</b>	9/3/2019
<b>Inspector Name</b>	Scott Taylor

Based on the survey methodology, the foliar cover (%) in each survey area is calculated by summing the total number of foliar occurrences, excluding noxious weeds, and dividing by the total occurrences in the transects. For this location:

<b>Reclaim Area (Foliar Cover)</b>	<b>Reference Area (Foliar Cover)</b>
$(87 + 7 + 0) / 195 =$ <b>48.2%</b>	$(93 + 0 + 0) / 198 =$ <b>47.0%</b>

For the purposes of this assessment, the undesirable foliar cover (%) is calculated by summing the total number of undesirable\* foliar occurrences and dividing by the total occurrences in the transects, excluding noxious weeds. For this location:

<b>Reclaim Area (Undesirable Foliar Cover)</b>	<b>Reference Area (Undesirable Foliar Cover)</b>
$3 / (87 + 7 + 0) =$ <b>3.2%</b>	$0 / (93 + 0 + 0) =$ <b>0.0%</b>

The percent of reference used to evaluate the reclamation area for compliance with COGCC Rule 1003.e(2) is calculated by dividing the foliar cover (%) in the reclaim area by the foliar cover (%) in the reference area. For this location:

<b>Percent of Reference (Reclaim % / Reference %)</b>
$48.2\% / 47.0\% =$ <b>102.6%</b>

### Reclaim Area Vegetation

Desirable Foliar Cover	46.7%
Desirable Basal Cover	27.7%
Non Vegetated	23.6%
Noxious Weeds Cover	0.5%
Undesirable Cover	1.5%
<b>Quality Assurance Total</b> <i>(must equal 100)</i>	<b>100.0%</b>
Grass (Foliar)	87
Forb (Foliar)	7
Shrubs (Foliar)	0
Noxious Weed (Foliar)	1
Grass (Basal)	53
Forb (Basal)	1
Shrubs (Basal)	0
Noxious Weed (Basal)	0
Bare Ground	0
Litter	46
Rock	0
<b>Total Occurrences</b>	<b>195</b>

### Reference Area Vegetation

Desirable Foliar Cover	47.0%
Desirable Basal Cover	11.6%
Non Vegetated	28.8%
Noxious Weeds Cover	12.6%
Undesirable Cover	0.0%
<b>Quality Assurance Total</b> <i>(must equal 100)</i>	<b>100.0%</b>
Grass (Foliar)	93
Forb (Foliar)	0
Shrubs (Foliar)	0
Noxious Weed (Foliar)	5
Grass (Basal)	20
Forb (Basal)	3
Shrubs (Basal)	0
Noxious Weed (Basal)	20
Bare Ground	0
Litter	57
Rock	0
<b>Total Occurrences</b>	<b>198</b>

\* Identified by the USDA NRCS as introduced and not native to the lower 48 states, and not considered beneficial for reclamation purposes.

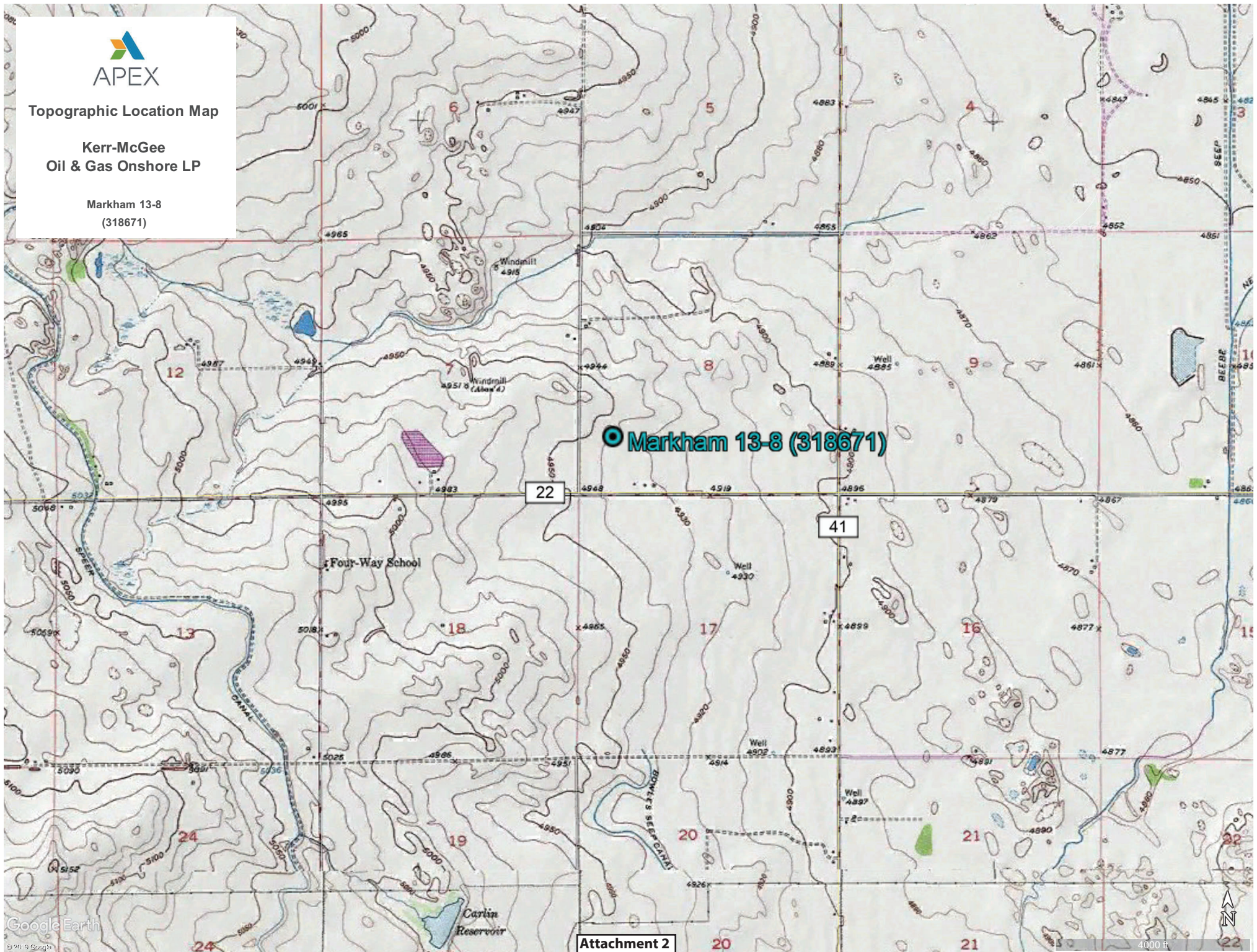




Topographic Location Map

Kerr-McGee  
Oil & Gas Onshore LP

Markham 13-8  
(318671)



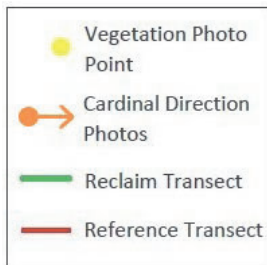




## Vegetation Survey Site Map

### Kerr-McGee Oil & Gas Onshore LP

Markham 13-8  
(318671)



Legal Description: SWSW, Sec. 8, T2N-R65W

Lat/Long: 40.14872/-104.69362

County: Weld

Land Use: Non-Cropland

Reference Area Foliar Cover: 47.0%

Reclaim Area Foliar Cover: 48.2%

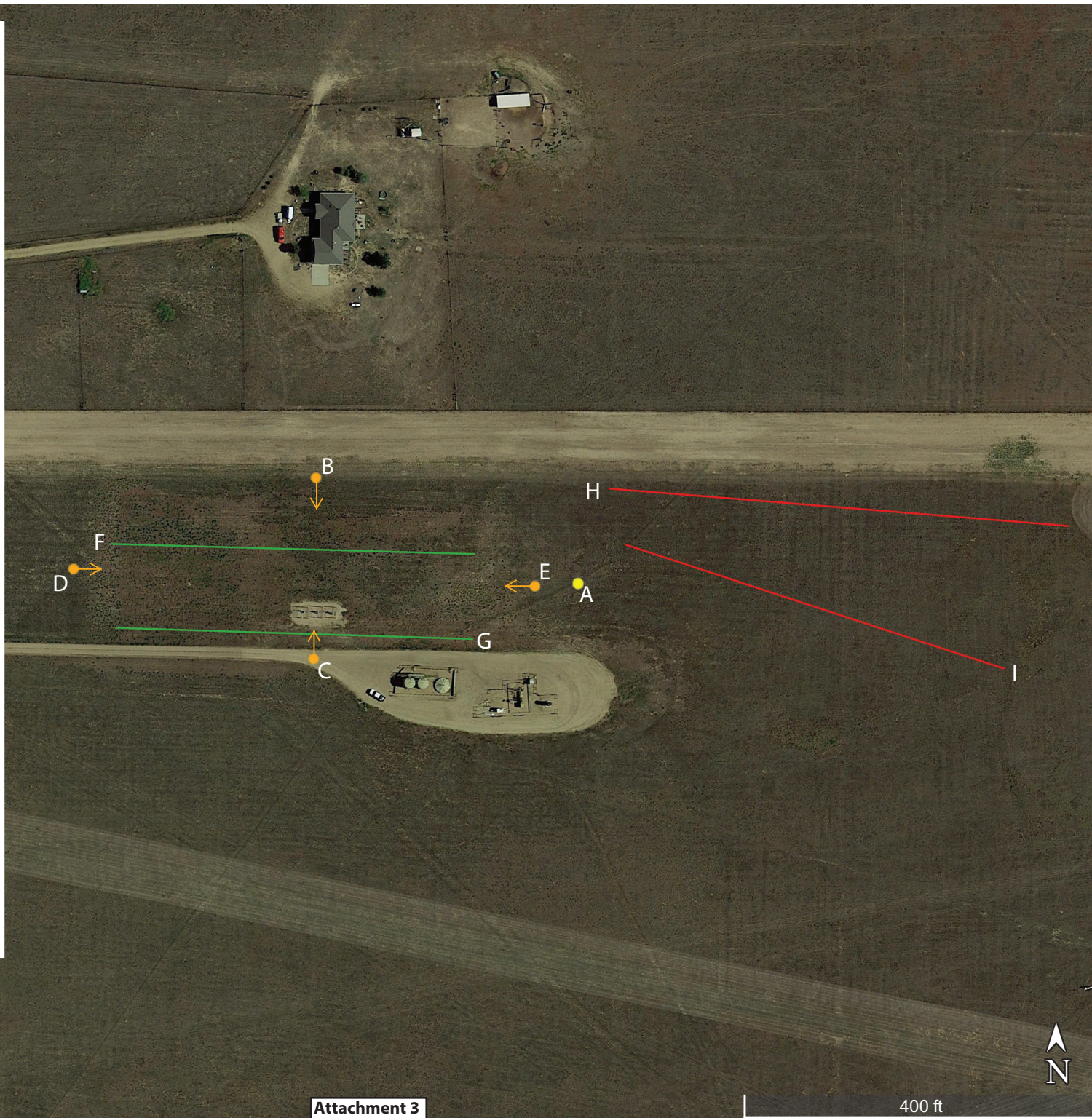
Cover Ratio (Reclaim/Reference): 102.6%

Inspector: Scott Taylor

Assessment Date: 9/3/2019

Aerial Imagery Date: 5/31/2018

*\*Please reference coordinate disclaimer on the photo log pages.*





## Vegetation Assessment Photo Log

Date Completed - 09/03/2019

Client - **Kerr-McGee Oil & Gas Onshore LP**

Location Name (ID) - **MARKHAM 13-8 (318671)**



Photo Point A: Edge of Disturbance - Facing North

\*Geographic coordinates provided in the borders of all attached photos are based on points identified by the mobile phone or tablet which collected the photo. Coordinate accuracy in this format is typically no greater than 5 meters, while the points illustrated in the site diagram associated with this submittal were collected with a high accuracy GPS unit with sub-meter accuracy. Discrepancies between the site diagram and photo coordinates will exist.



# Vegetation Assessment Photo Log

Date Completed - 09/03/2019

Client - **Kerr-McGee Oil & Gas Onshore LP**

Location Name (ID) - **MARKHAM 13-8 (318671)**



Photo Point B: North of Disturbance - Facing South



Photo Point C: South of Disturbance - Facing North



Photo Point D: West of Disturbance - Facing East



Photo Point E: East of Disturbance - Facing West



# Vegetation Assessment Photo Log

Date Completed - 09/03/2019

Client - **Kerr-McGee Oil & Gas Onshore LP**

Location Name (ID) - **MARKHAM 13-8 (318671)**



Photo Point A: Reclaim Area Vegetation Photo Point - Facing West



# Vegetation Assessment Photo Log

Client - **Kerr-McGee Oil & Gas Onshore LP**

Date Completed - 09/03/2019

Location Name (ID) - **MARKHAM 13-8 (318671)**



Transect Photo F: Reclaim Transect 1 - Facing East



Transect Photo G: Reclaim Transect 2 - Facing West



# Vegetation Assessment Photo Log

Date Completed - 09/03/2019

Client - **Kerr-McGee Oil & Gas Onshore LP**

Location Name (ID) - **MARKHAM 13-8 (318671)**



Photo Point A: Reference Area Vegetation Photo Point - Facing East



# Vegetation Assessment Photo Log

Client - **Kerr-McGee Oil & Gas Onshore LP**

Date Completed - 09/03/2019

Location Name (ID) - **MARKHAM 13-8 (318671)**



Transect Photo H: Reference Transect 1 - Facing East



Transect Photo I: Reference Transect 2 - Facing West

# Vegetation Survey (Field Data Table)

Client: Kerr-McGee  
 COGCC Location Name (ID): MARKHAM 13-8 (318671)  
 Transect ID: Reclaim Transect 1  
 Transect Length: 408 ft.  
 Assessment Date: 9/3/2019  
 Inspector: Scott Taylor

Point	Foliar	Species	Basal	Species
1	Grass	<i>Panicum virgatum</i>	Grass	<i>Panicum virgatum</i>
2	Grass	<i>Calamovilfa longifolia</i>	Non Vegetative	Litter
3	Grass	<i>Calamovilfa longifolia</i>	Grass	<i>Calamovilfa longifolia</i>
4	Grass	<i>Calamovilfa longifolia</i>	Non Vegetative	Litter
5	Grass	<i>Calamovilfa longifolia</i>	Grass	<i>Calamovilfa longifolia</i>
6	Grass	<i>Panicum virgatum</i>	Grass	<i>Panicum virgatum</i>
7	Grass	<i>Calamovilfa longifolia</i>	Non Vegetative	Litter
8	Grass	<i>Panicum virgatum</i>	Grass	<i>Panicum virgatum</i>
9	Grass	<i>Calamovilfa longifolia</i>	Non Vegetative	Litter
10	Grass	<i>Panicum virgatum</i>	Grass	<i>Panicum virgatum</i>
11	Grass	<i>Calamovilfa longifolia</i>	Non Vegetative	Litter
12	Grass	<i>Calamovilfa longifolia</i>	Grass	<i>Panicum virgatum</i>
13			Non Vegetative	Litter
14	Grass	<i>Calamovilfa longifolia</i>	Non Vegetative	Litter
15	Forb	<i>Croton texensis</i>	Non Vegetative	Litter
16	Grass	<i>Panicum virgatum</i>	Grass	<i>Panicum virgatum</i>
17	Grass	<i>Calamovilfa longifolia</i>	Grass	<i>Calamovilfa longifolia</i>
18	Forb	<i>Conyza canadensis</i>	Grass	<i>Calamovilfa longifolia</i>
19	Grass	<i>Panicum virgatum</i>	Grass	<i>Panicum virgatum</i>
20	Grass	<i>Calamovilfa longifolia</i>	Non Vegetative	Litter
21	Grass	<i>Calamovilfa longifolia</i>	Grass	<i>Calamovilfa longifolia</i>
22	Grass	<i>Panicum virgatum</i>	Grass	<i>Panicum virgatum</i>
23	Grass	<i>Calamovilfa longifolia</i>	Non Vegetative	Litter
24	Grass	<i>Thinopyrum intermedia</i>	Non Vegetative	Litter
25	Grass	<i>Thinopyrum intermedia</i>	Non Vegetative	Litter
26	Grass	<i>Panicum virgatum</i>	Grass	<i>Panicum virgatum</i>
27	Grass	<i>Calamovilfa longifolia</i>	Grass	<i>Calamovilfa longifolia</i>
28	Grass	<i>Calamovilfa longifolia</i>	Non Vegetative	Litter
29			Non Vegetative	Litter
30	Grass	<i>Calamovilfa longifolia</i>	Non Vegetative	Litter
31	Grass	<i>Calamovilfa longifolia</i>	Grass	<i>Calamovilfa longifolia</i>
32	Grass	<i>Panicum virgatum</i>	Grass	<i>Panicum virgatum</i>
33	Grass	<i>Panicum virgatum</i>	Grass	<i>Panicum virgatum</i>
34	Grass	<i>Calamovilfa longifolia</i>	Grass	<i>Calamovilfa longifolia</i>
35	Grass	<i>Calamovilfa longifolia</i>	Non Vegetative	Litter
36	Grass	<i>Panicum virgatum</i>	Non Vegetative	Litter
37	Grass	<i>Calamovilfa longifolia</i>	Forb	<i>Conyza canadensis</i>
38	Grass	<i>Panicum virgatum</i>	Grass	<i>Panicum virgatum</i>
39	Grass	<i>Bouteloua gracilis</i>	Grass	<i>Bouteloua gracilis</i>
40	Grass	<i>Calamovilfa longifolia</i>	Non Vegetative	Litter
41	Grass	<i>Calamovilfa longifolia</i>	Non Vegetative	Litter
42	Grass	<i>Thinopyrum intermedia</i>	Grass	<i>Thinopyrum intermedia</i>
43	Grass	<i>Calamovilfa longifolia</i>	Non Vegetative	Litter
44	Forb	<i>Argemone polyanthemus</i>	Grass	<i>Calamovilfa longifolia</i>
45	Grass	<i>Calamovilfa longifolia</i>	Non Vegetative	Litter
46	Grass	<i>Panicum virgatum</i>	Grass	<i>Panicum virgatum</i>
47			Non Vegetative	Litter
48	Grass	<i>Panicum virgatum</i>	Grass	<i>Panicum virgatum</i>
49	Grass	<i>Calamovilfa longifolia</i>	Grass	<i>Calamovilfa longifolia</i>
50	Grass	<i>Calamovilfa longifolia</i>	Non Vegetative	Litter



# Vegetation Survey (Field Data Table)

Client: Kerr-McGee  
 COGCC Location Name (ID): MARKHAM 13-8 (318671)  
 Transect ID: Reclaim Transect 2  
 Transect Length: 400 ft.  
 Assessment Date: 9/3/2019  
 Inspector: Scott Taylor

Point	Foliar	Species	Basal	Species
1	Grass	<i>Bouteloua gracilis</i>	Grass	<i>Bouteloua gracilis</i>
2	Grass	<i>Calamovilfa longifolia</i>	Grass	<i>Calamovilfa longifolia</i>
3	Grass	<i>Calamovilfa longifolia</i>	Non Vegetative	Litter
4	Grass	<i>Calamovilfa longifolia</i>	Non Vegetative	Litter
5	Grass	<i>Bouteloua gracilis</i>	Grass	<i>Bouteloua gracilis</i>
6	Grass	<i>Bouteloua gracilis</i>	Grass	<i>Bouteloua gracilis</i>
7	Grass	<i>Calamovilfa longifolia</i>	Non Vegetative	Litter
8	Grass	<i>Calamovilfa longifolia</i>	Non Vegetative	Litter
9	Grass	<i>Bouteloua curtipendula</i>	Grass	<i>Bouteloua curtipendula</i>
10	Grass	<i>Panicum virgatum</i>	Grass	<i>Panicum virgatum</i>
11	Grass	<i>Bouteloua gracilis</i>	Grass	<i>Bouteloua gracilis</i>
12	Grass	<i>Panicum virgatum</i>	Non Vegetative	Litter
13	Noxious Weed C	<i>Convolvulus arvensis</i>	Non Vegetative	Litter
14	Grass	<i>Panicum virgatum</i>	Grass	<i>Panicum virgatum</i>
15	Grass	<i>Calamovilfa longifolia</i>	Non Vegetative	Litter
16	Grass	<i>Calamovilfa longifolia</i>	Grass	<i>Bouteloua gracilis</i>
17	Grass	<i>Calamovilfa longifolia</i>	Non Vegetative	Litter
18	Forb	<i>Salsola L</i>	Non Vegetative	Litter
19	Grass	<i>Panicum virgatum</i>	Non Vegetative	Litter
20	Grass	<i>Calamovilfa longifolia</i>	Non Vegetative	Litter
21	Grass	<i>Panicum virgatum</i>	Non Vegetative	Litter
22	Grass	<i>Panicum virgatum</i>	Grass	<i>Panicum virgatum</i>
23	Grass	<i>Bouteloua gracilis</i>	Non Vegetative	Litter
24	Forb	<i>Salsola L</i>	Non Vegetative	Litter
25	Grass	<i>Bouteloua gracilis</i>	Grass	<i>Bouteloua gracilis</i>
26	Grass	<i>Panicum virgatum</i>	Non Vegetative	Litter
27	Grass	<i>Bouteloua curtipendula</i>	Grass	<i>Bouteloua curtipendula</i>
28	Grass	<i>Panicum virgatum</i>	Grass	<i>Panicum virgatum</i>
29			Non Vegetative	Litter
30			Non Vegetative	Litter
31	Grass	<i>Calamovilfa longifolia</i>	Grass	<i>Calamovilfa longifolia</i>
32	Grass	<i>Bouteloua gracilis</i>	Grass	<i>Bouteloua gracilis</i>
33	Grass	<i>Calamovilfa longifolia</i>	Grass	<i>Calamovilfa longifolia</i>
34	Grass	<i>Panicum virgatum</i>	Non Vegetative	Litter
35	Grass	<i>Panicum virgatum</i>	Non Vegetative	Litter
36	Grass	<i>Calamovilfa longifolia</i>	Non Vegetative	Litter
37	Grass	<i>Bouteloua gracilis</i>	Non Vegetative	Litter
38	Grass	<i>Panicum virgatum</i>	Grass	<i>Panicum virgatum</i>
39	Grass	<i>Calamovilfa longifolia</i>	Grass	<i>Calamovilfa longifolia</i>
40	Grass	<i>Calamovilfa longifolia</i>	Grass	<i>Calamovilfa longifolia</i>
41	Grass	<i>Panicum virgatum</i>	Grass	<i>Panicum virgatum</i>
42	Forb	<i>Lactuca serriola</i>	Grass	<i>Calamovilfa longifolia</i>
43	Grass	<i>Panicum virgatum</i>	Grass	<i>Panicum virgatum</i>
44	Grass	<i>Calamovilfa longifolia</i>	Grass	<i>Calamovilfa longifolia</i>
45	Grass	<i>Calamovilfa longifolia</i>	Grass	<i>Calamovilfa longifolia</i>
46	Grass	<i>Calamovilfa longifolia</i>	Non Vegetative	Litter
47	Grass	<i>Panicum virgatum</i>	Grass	<i>Panicum virgatum</i>
48	Grass	<i>Calamovilfa longifolia</i>	Non Vegetative	Litter
49	Forb	<i>Conyza canadensis</i>	Grass	<i>Calamovilfa longifolia</i>
50	Grass	<i>Calamovilfa longifolia</i>	Grass	<i>Calamovilfa longifolia</i>



# Vegetation Survey (Field Data Table)

Client: Kerr-McGee  
 COGCC Location Name (ID): MARKHAM 13-8 (318671)  
 Transect ID: Reference Transect 1  
 Transect Length: 522 ft.  
 Assessment Date: 9/3/2019  
 Inspector: Scott Taylor

Point	Foliar	Species	Basal	Species
1	Grass	<i>Thinopyrum intermedia</i>	Non Vegetative	Litter
2	Grass	<i>Thinopyrum intermedia</i>	Non Vegetative	Litter
3	Grass	<i>Thinopyrum intermedia</i>	Non Vegetative	Litter
4	Grass	<i>Thinopyrum intermedia</i>	Non Vegetative	Litter
5	Grass	<i>Thinopyrum intermedia</i>	Grass	<i>Bouteloua gracilis</i>
6	Grass	<i>Thinopyrum intermedia</i>	Non Vegetative	Litter
7	Grass	<i>Thinopyrum intermedia</i>	Grass	<i>Thinopyrum intermedia</i>
8	Grass	<i>Thinopyrum intermedia</i>	Non Vegetative	Litter
9	Grass	<i>Thinopyrum intermedia</i>	Forb	<i>Lygodesmia juncea</i>
10	Grass	<i>Thinopyrum intermedia</i>	Non Vegetative	Litter
11	Grass	<i>Thinopyrum intermedia</i>	Grass	<i>Calamovilfa longifolia</i>
12	Grass	<i>Thinopyrum intermedia</i>	Non Vegetative	Litter
13	Grass	<i>Thinopyrum intermedia</i>	Grass	<i>Thinopyrum intermedia</i>
14	Grass	<i>Thinopyrum intermedia</i>	Non Vegetative	Litter
15	Grass	<i>Thinopyrum intermedia</i>	Grass	<i>Calamovilfa longifolia</i>
16	Grass	<i>Thinopyrum intermedia</i>	Non Vegetative	Litter
17	Grass	<i>Thinopyrum intermedia</i>	Non Vegetative	Litter
18	Grass	<i>Thinopyrum intermedia</i>	Grass	<i>Bouteloua gracilis</i>
19	Grass	<i>Thinopyrum intermedia</i>	Non Vegetative	Litter
20	Grass	<i>Thinopyrum intermedia</i>	Non Vegetative	Litter
21	Grass	<i>Thinopyrum intermedia</i>	Non Vegetative	Litter
22	Grass	<i>Thinopyrum intermedia</i>	Non Vegetative	Litter
23	Grass	<i>Thinopyrum intermedia</i>	Grass	<i>Thinopyrum intermedia</i>
24	Grass	<i>Thinopyrum intermedia</i>	Non Vegetative	Litter
25	Grass	<i>Thinopyrum intermedia</i>	Forb	<i>Lygodesmia juncea</i>
26	Grass	<i>Thinopyrum intermedia</i>	Non Vegetative	Litter
27	Grass	<i>Thinopyrum intermedia</i>	Non Vegetative	Litter
28	Grass	<i>Thinopyrum intermedia</i>	Grass	<i>Bouteloua gracilis</i>
29			Non Vegetative	Litter
30	Grass	<i>Thinopyrum intermedia</i>	Non Vegetative	Litter
31	Grass	<i>Thinopyrum intermedia</i>	Non Vegetative	Litter
32	Grass	<i>Thinopyrum intermedia</i>	Noxious Weed C	<i>Bromus tectorum</i>
33	Noxious Weed C	<i>Bromus tectorum</i>	Non Vegetative	Litter
34	Grass	<i>Thinopyrum intermedia</i>	Non Vegetative	Litter
35	Grass	<i>Thinopyrum intermedia</i>	Noxious Weed C	<i>Bromus tectorum</i>
36	Grass	<i>Thinopyrum intermedia</i>	Non Vegetative	Litter
37	Grass	<i>Thinopyrum intermedia</i>	Grass	<i>Bouteloua gracilis</i>
38	Grass	<i>Thinopyrum intermedia</i>	Non Vegetative	Litter
39	Grass	<i>Thinopyrum intermedia</i>	Grass	<i>Bouteloua gracilis</i>
40	Grass	<i>Thinopyrum intermedia</i>	Non Vegetative	Litter
41			Non Vegetative	Litter
42	Grass	<i>Thinopyrum intermedia</i>	Noxious Weed C	<i>Bromus tectorum</i>
43	Noxious Weed C	<i>Bromus tectorum</i>	Non Vegetative	Litter
44	Grass	<i>Thinopyrum intermedia</i>	Noxious Weed C	<i>Bromus tectorum</i>
45	Grass	<i>Thinopyrum intermedia</i>	Noxious Weed C	<i>Bromus tectorum</i>
46	Grass	<i>Thinopyrum intermedia</i>	Non Vegetative	Litter
47	Grass	<i>Thinopyrum intermedia</i>	Non Vegetative	Litter
48	Grass	<i>Thinopyrum intermedia</i>	Noxious Weed C	<i>Bromus tectorum</i>
49	Grass	<i>Calamovilfa longifolia</i>	Grass	<i>Calamovilfa longifolia</i>
50	Grass	<i>Thinopyrum intermedia</i>	Noxious Weed C	<i>Bromus tectorum</i>



# Vegetation Survey (Field Data Table)

Client: Kerr-McGee  
 COGCC Location Name (ID): MARKHAM 13-8 (318671)  
 Transect ID: Reference Transect 2  
 Transect Length: 450 ft.  
 Assessment Date: 9/3/2019  
 Inspector: Scott Taylor

Point	Foliar	Species	Basal	Species
1	Grass	<i>Thinopyrum intermedia</i>	Non Vegetative	Litter
2	Grass	<i>Thinopyrum intermedia</i>	Grass	<i>Calamovilfa longifolia</i>
3	Grass	<i>Thinopyrum intermedia</i>	Non Vegetative	Litter
4	Grass	<i>Thinopyrum intermedia</i>	Non Vegetative	Litter
5	Grass	<i>Thinopyrum intermedia</i>	Non Vegetative	Litter
6	Grass	<i>Thinopyrum intermedia</i>	Non Vegetative	Litter
7	Grass	<i>Thinopyrum intermedia</i>	Noxious Weed C	<i>Bromus tectorum</i>
8	Noxious Weed C	<i>Bromus tectorum</i>	Non Vegetative	Litter
9	Grass	<i>Thinopyrum intermedia</i>	Non Vegetative	Litter
10	Grass	<i>Thinopyrum intermedia</i>	Non Vegetative	Litter
11	Grass	<i>Thinopyrum intermedia</i>	Non Vegetative	Litter
12	Grass	<i>Thinopyrum intermedia</i>	Non Vegetative	Litter
13	Grass	<i>Thinopyrum intermedia</i>	Grass	<i>Thinopyrum intermedia</i>
14	Grass	<i>Thinopyrum intermedia</i>	Non Vegetative	Litter
15	Grass	<i>Thinopyrum intermedia</i>	Noxious Weed C	<i>Bromus tectorum</i>
16	Grass	<i>Thinopyrum intermedia</i>	Noxious Weed C	<i>Bromus tectorum</i>
17	Grass	<i>Thinopyrum intermedia</i>	Non Vegetative	Litter
18	Grass	<i>Thinopyrum intermedia</i>	Non Vegetative	Litter
19	Grass	<i>Thinopyrum intermedia</i>	Noxious Weed C	<i>Bromus tectorum</i>
20	Grass	<i>Thinopyrum intermedia</i>	Noxious Weed C	<i>Bromus tectorum</i>
21	Grass	<i>Thinopyrum intermedia</i>	Grass	<i>Bouteloua gracilis</i>
22	Grass	<i>Thinopyrum intermedia</i>	Non Vegetative	Litter
23	Grass	<i>Thinopyrum intermedia</i>	Noxious Weed C	<i>Bromus tectorum</i>
24	Grass	<i>Thinopyrum intermedia</i>	Non Vegetative	Litter
25	Noxious Weed C	<i>Bromus tectorum</i>	Non Vegetative	Litter
26	Grass	<i>Thinopyrum intermedia</i>	Noxious Weed C	<i>Bromus tectorum</i>
27	Grass	<i>Thinopyrum intermedia</i>	Grass	<i>Calamovilfa longifolia</i>
28	Grass	<i>Thinopyrum intermedia</i>	Non Vegetative	Litter
29	Grass	<i>Thinopyrum intermedia</i>	Non Vegetative	Litter
30	Grass	<i>Thinopyrum intermedia</i>	Non Vegetative	Litter
31	Grass	<i>Thinopyrum intermedia</i>	Noxious Weed C	<i>Bromus tectorum</i>
32	Grass	<i>Thinopyrum intermedia</i>	Noxious Weed C	<i>Bromus tectorum</i>
33	Grass	<i>Thinopyrum intermedia</i>	Non Vegetative	Litter
34	Grass	<i>Thinopyrum intermedia</i>	Non Vegetative	Litter
35	Grass	<i>Thinopyrum intermedia</i>	Grass	<i>Calamovilfa longifolia</i>
36	Grass	<i>Thinopyrum intermedia</i>	Grass	<i>Calamovilfa longifolia</i>
37	Grass	<i>Thinopyrum intermedia</i>	Noxious Weed C	<i>Bromus tectorum</i>
38	Noxious Weed C	<i>Bromus tectorum</i>	Non Vegetative	Litter
39	Grass	<i>Thinopyrum intermedia</i>	Grass	<i>Thinopyrum intermedia</i>
40	Grass	<i>Thinopyrum intermedia</i>	Non Vegetative	Litter
41	Grass	<i>Thinopyrum intermedia</i>	Forb	<i>Lygodesmia juncea</i>
42	Grass	<i>Thinopyrum intermedia</i>	Noxious Weed C	<i>Bromus tectorum</i>
43	Grass	<i>Thinopyrum intermedia</i>	Non Vegetative	Litter
44	Grass	<i>Thinopyrum intermedia</i>	Grass	<i>Calamovilfa longifolia</i>
45	Grass	<i>Thinopyrum intermedia</i>	Non Vegetative	Litter
46	Grass	<i>Thinopyrum intermedia</i>	Non Vegetative	Litter
47	Grass	<i>Thinopyrum intermedia</i>	Grass	<i>Bouteloua gracilis</i>
48	Grass	<i>Thinopyrum intermedia</i>	Noxious Weed C	<i>Bromus tectorum</i>
49	Grass	<i>Thinopyrum intermedia</i>	Noxious Weed C	<i>Bromus tectorum</i>
50	Grass	<i>Thinopyrum intermedia</i>	Non Vegetative	Litter