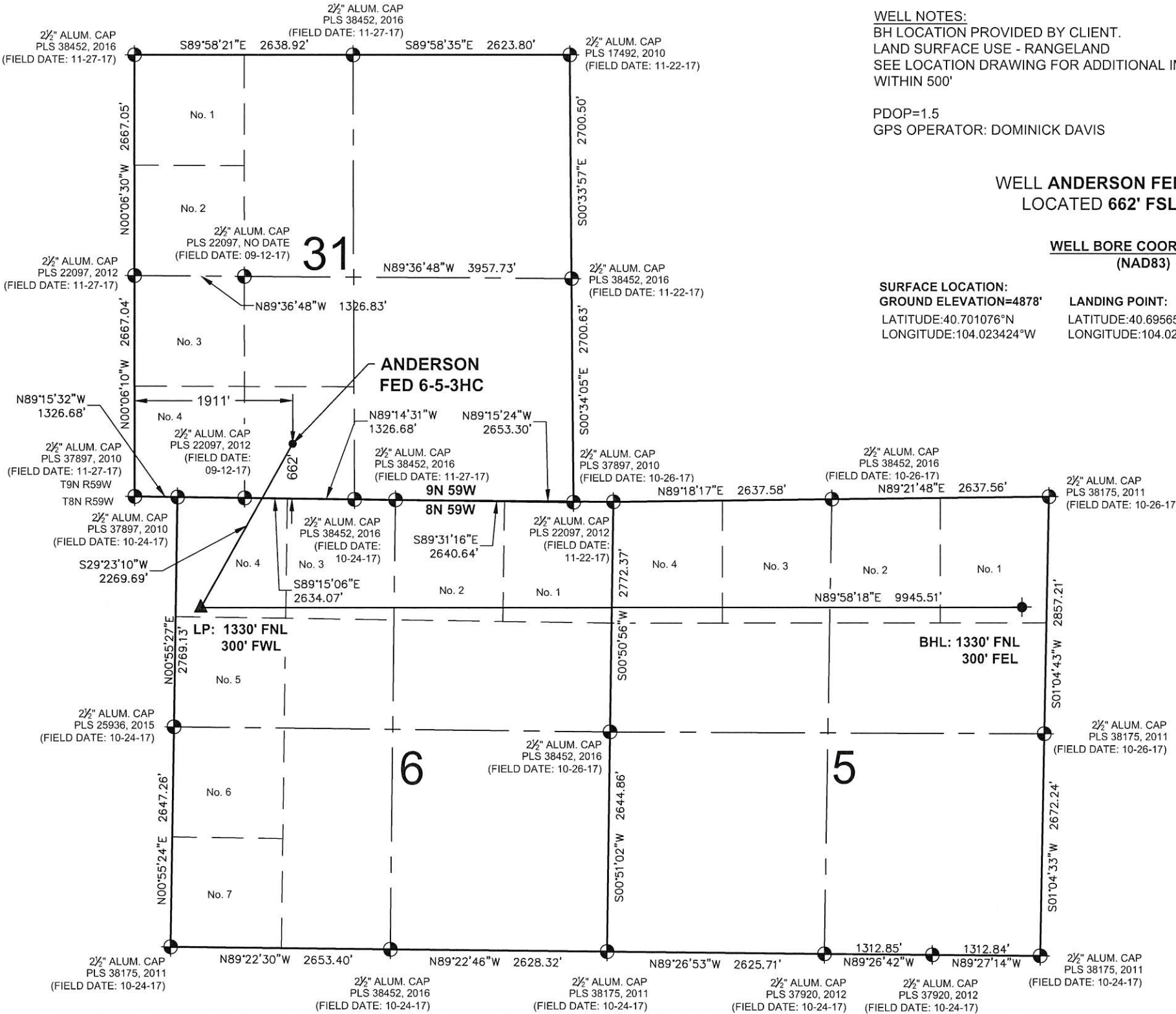


ANDERSON FED 6-5-3HC
WELL LOCATION CERTIFICATE



WELL NOTES:
BH LOCATION PROVIDED BY CLIENT.
LAND SURFACE USE - RANGELAND
SEE LOCATION DRAWING FOR ADDITIONAL IMPROVEMENTS
WITHIN 500'

PDOP=1.5
GPS OPERATOR: DOMINICK DAVIS

WELL ANDERSON FED 6-5-3HC TO BE
LOCATED 662' FSL & 1911' FWL

WELL BORE COORDINATES
(NAD83)

SURFACE LOCATION:
GROUND ELEVATION=4878'
LATITUDE:40.701076°N
LONGITUDE:104.023424°W

LANDING POINT:
LATITUDE:40.695652°N
LONGITUDE:104.027444°W

BOTTOM HOLE:
LATITUDE:40.695641°N
LONGITUDE:103.991587°W

- NOTES:
1. THIS FIELD SURVEY CONFORMS TO THE MINIMUM STANDARDS SET BY THE COGCC, RULE NO. 215
 2. ALL DISTANCES AND BEARINGS SHOWN HEREON ARE GROUND VALUES AS GPS MEASURED IN THE FIELD, WITH TIES TO WELLS MEASURED PERPENDICULAR TO LINES SHOWN HEREON. THIS LOW DISTORTION PROJECTION (LDP) IS BASED ON THE NORTH AMERICAN DATUM OF 1983, U.S. SURVEY FOOT WITH A LATITUDE ORIGIN OF 40.655085°N, A CENTRAL MERIDIAN LONGITUDE OF 104.086861°W, AND A SCALE FACTOR ON THE CENTRAL MERIDIAN OF 1.000232 (EXACT). THE LDP BASIS OF BEARINGS IS GEODETIC NORTH.
 3. FIELD VERIFICATION OF MONUMENTS COMPLETED WITHIN 1 YEAR OF SIGNATURE DATE, UNLESS OTHERWISE NOTED.

- LEGEND
- = EXISTING MONUMENT
 - = CALCULATED POSITION
 - = PROPOSED WELL
 - ◆ = BOTTOM HOLE
 - ▲ = LANDING POINT
 - ◆ = EXISTING WELL
 - LP = LANDING POINT
 - BHL = BOTTOM HOLE

I, ROBERT J. GUFFEY, A LICENSED PROFESSIONAL LAND SURVEYOR IN THE STATE OF COLORADO, DO HEREBY STATE THAT THIS WELL LOCATION CERTIFICATE WAS MADE FROM AN ACTUAL FIELD SURVEY PERFORMED UNDER MY RESPONSIBLE CHARGE ON THE DATE SHOWN HEREON AND CORRECTLY SHOWS THE LOCATION OF THE WELL SHOWN HEREON, AS STAKED ON THE GROUND, AND THE LOCATION OF THE LINES OF THE PUBLIC LAND SURVEY SYSTEM TO MY KNOWLEDGE, INFORMATION, AND BELIEF. THIS CERTIFICATE DOES NOT REPRESENT A LAND SURVEY PLAT OR IMPROVEMENT SURVEY PLAT AS DEFINED BY C.R.S. 38-51-102 AND IS IN ACCORDANCE WITH THE APPLICABLE STANDARDS OF PRACTICE FOR PROFESSIONAL LAND SURVEYING. THIS CERTIFICATE IS NOT A GUARANTY OR WARRANTY, EITHER EXPRESSED OR IMPLIED.



ROBERT J. GUFFEY, PLS 20680
COLORADO LICENSED PROFESSIONAL LAND SURVEYOR
FOR AND ON BEHALF OF P.F.S., LLC
d.b.a. ASCENT GEOMATICS SOLUTIONS

NOTICE: ACCORDING TO COLORADO LAW YOU MUST COMMENCE ANY LEGAL ACTION BASED UPON ANY DEFECT IN THIS SURVEY WITHIN THREE YEARS AFTER YOU FIRST DISCOVER SUCH DEFECT. IN NO EVENT MAY ANY ACTION BASED UPON ANY DEFECT IN THIS SURVEY BE COMMENCED MORE THAN TEN YEARS FROM THIS SAID DATE OF THIS CERTIFICATION SHOWN HEREON.