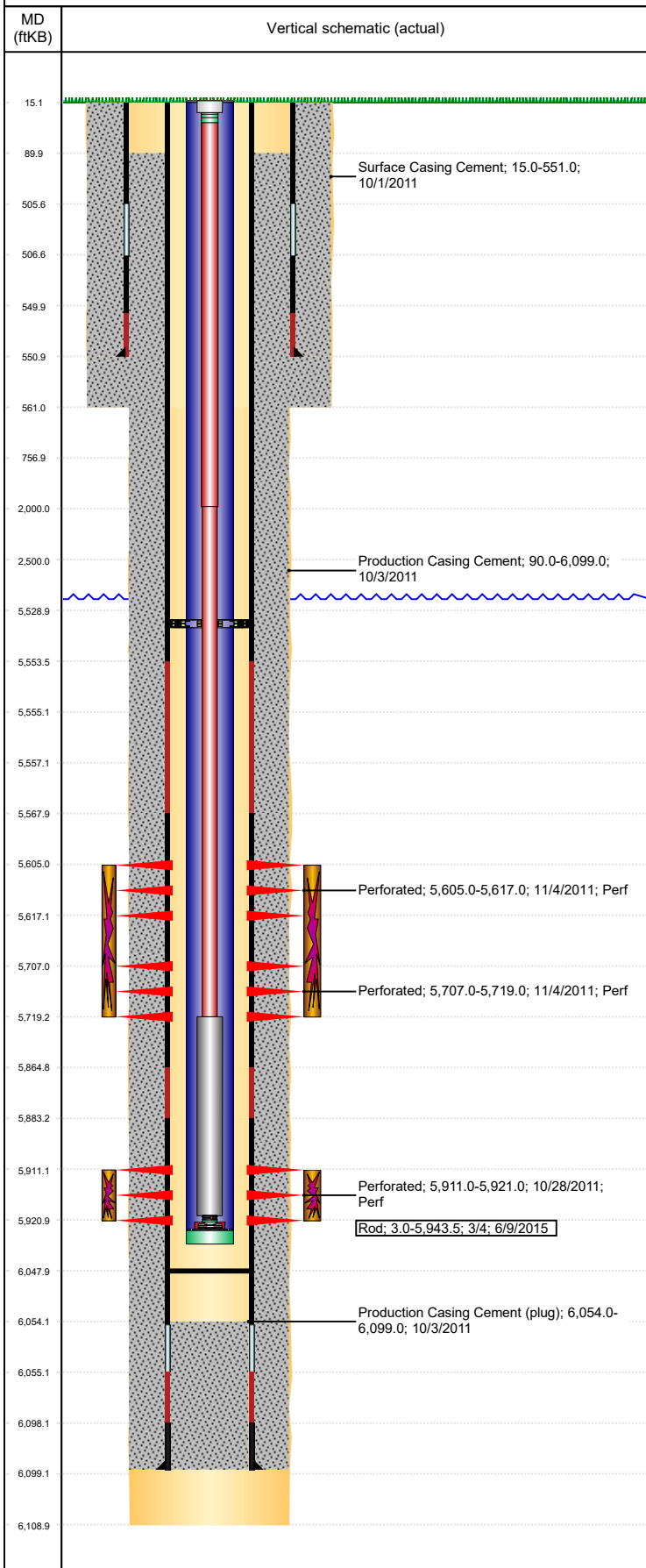


**Well Name: ROHN PC LD09-01**

VERTICAL, ORIGINAL HOLE, 1/7/2020 7:55:54 AM



Well Header									
API 05-123-33732		Business Unit DJ BASIN			District 25		Well Config VERTICAL		
KB - GL / MSL (ft... 15.00		Spud Date 9/30/2011		P & A Date		Well Production Status PR			SoRT No
Comment									
Surface Location (Congressional)									
Qtr 3 NE	Qtr 4 NE	Section 9	Twonshp 9	Twonsh... N	Range 58	Rng E/... W	Actual Latitude (°) 40.77134574		Actual Longitude (°) -103.86237006
Wellbore Sections									
Section Des			Size (in)			Act Top, MD (ftKB)		Act Btm, MD (ftKB)	
SURFACE			12 1/4			15		561	
PRODUCTION			7 7/8			561		6,109	
Casing Strings									
Csg Des			Run Date		OD (in)	Wt/Len (lb/ft)	Grade	Top, MD (ftKB)	MD (ftKB)
Surface			10/1/2011		8 5/8	24.00	J-55	15.0	551.0
PRODUCTION			10/3/2011		4 1/2	11.60	M-80	15.0	6,099.0
Cement									
Des					Start Date		Top (ftKB)		Btm (ftKB)
Surface Casing Cement					10/1/2011		15.0		551.0
Production Casing Cement					10/3/2011		90.0		6,099.0
Zone Statuses									
Zone Name		Status Date	Status	Fluid Type	Job				Prod Method
CODELL		1/13/2012	PR		DRILLING/COMPLETION - ORIGINAL, 9/29/2011...				
NIOBRARA		1/13/2012	PR		DRILLING/COMPLETION - ORIGINAL, 9/29/2011...				
Perforation Data									
Linked Zone			Bnch/Stg	Entered Shot Total	Top (ftKB)		Btm (ftKB)		Date
NIOBRARA, ORIGINAL HOLE			A	24	5,605.00		5,617.00		11/4/2011
NIOBRARA, ORIGINAL HOLE			B	24	5,707.00		5,719.00		11/4/2011
CODELL, ORIGINAL HOLE				40	5,911.00		5,921.00		10/28/2011
Stimulation Intervals									
Zone				Start Date		Top (ftKB)		Btm (ftKB)	
NIOBRARA, ORIGINAL HOLE				11/4/2011		5,605.0		5,719.0	
CODELL, ORIGINAL HOLE				11/4/2011		5,911.0		5,921.0	
Other In Hole									
Run Date		Des				OD (in)	Top (ftKB)		Btm (ftKB)
Logs									
Date		Type					Top, MD (ftKB)		Btm, MD (ftKB)
10/3/2011		BOREHOLE VOLUME PLOT					551.0		6,087.0
10/3/2011		SPECTRAL DENSITY/Pe/DSN NEUTRON/SP/ARRAY COMPENSATED TRUE RESISTIVITY					551.0		6,107.0
10/3/2011		SPECTRAL GAMMA RAY					4,900.0		6,067.0
10/13/2011		CBL/CCL/GR					15.0		6,036.0
6/6/2013		GYRO					15.0		5,975.0
Plug Back Total Depths									
Date		Type			Com				Depth (ftKB)
1/21/2012		FILL			TBG TALLY MEASUREMENT.				6,051.4
12/10/2012		FILL			SLICK-LINE TAG.				6,048.0